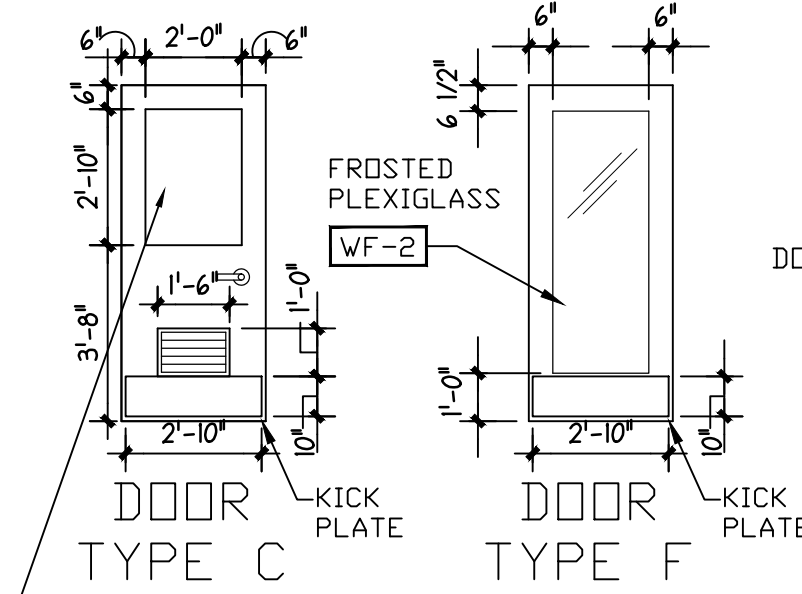
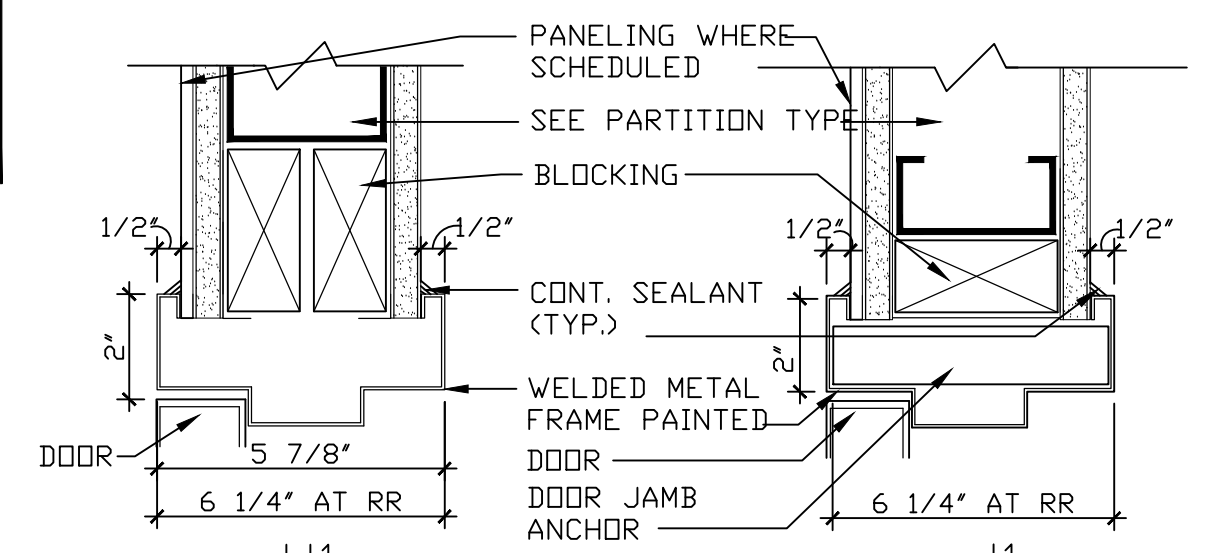


DOOR #	SIZE	MATERIAL	TYPE	FINISH	FRAME	MATERIAL	TYPE	JAMB	HEAD	FINISH	LABEL	KICK PLATE	LOCATION	HARDWARE	KEY SCHEDULE	NOTES	
109A	3'-0" X 7'-0"	HM	C	PT-03	HM	1	J1	H1	PT-02	-		10" X 34"	SALES SIDE OF DOOR	3	111	KEY #4	PHARMACY DOOR WITH FLOOR STOP.
109B	3'-0" X 7'-0"	WD	F	PL-1	HM	1	J1	H1	PT-03	-		10" X 34"	SALES SIDE OF DOOR	3	112	KEY #4	CONSULTATION ACCESS DOOR. DOOR TO BE PL-8 PIONITE WM 791-5 HARD ROCK MAPLE FINISH-TEXTURED OR NEVAMAR SANTA ROSA PLUM TREE W22001T
G.C. TO PURCHASE DOOR #109B THROUGH "LOCKNET", ROBERT OWEN (800) 887-4307, Rob@locknet.com																	
114B	3'-0" X 7'-0"	POLYMER CELL B	MANUF	STL	1	J2	H2	PT-04	-			N/A	MANUF	NDNE	NDNE		CHASE-DURUS MODEL HW 3011, BI-PARTING DOORS - COLOR: CHOCOLATE BROWN

SPACE RESERVED FOR CITY OF PORTLAND, MAINE ELECTRONIC STAMP



REFER TO RITE AID'S SEGMENTATION MANUAL SECTION SEG3 (DATED 10-10-2011) FOR PRIVACY BLINDS (AND HOLD DOWN CLIPS) FOR DOOR AND WINDOW BETWEEN PHARMACY AND NEW CONSULTATION ROOM. GC TO PROVIDE.



DOOR SCHED. & NOTES

SCALE: NOT TO SCALE

HARDWARE SET NUMBER 3

- 1 FLOOR BUMPER 406 1/2 X PA 28 X HB-IVES
- 1-1/2 PAIR BUTTS, 4-1/2 X 4-1/2 STANLEY FBB 191 X US 26D NRP
- 1 CLOSER, CORBIN-RUSSWIN DC 6210X 689 X M54
- 1 LOCK, CORBIN-RUSSWIN CL 3357 NZD X 626 X 2 3/4" B.S. (STOREROOM)
- 1 LOCK/LATCH GUARD-IVES LG13 U532D
- 1 KICK PLATE, 10" X 34" SERIES 8400 (NOT FOR #109B).

HARDWARE SET NUMBER 2 (#104)

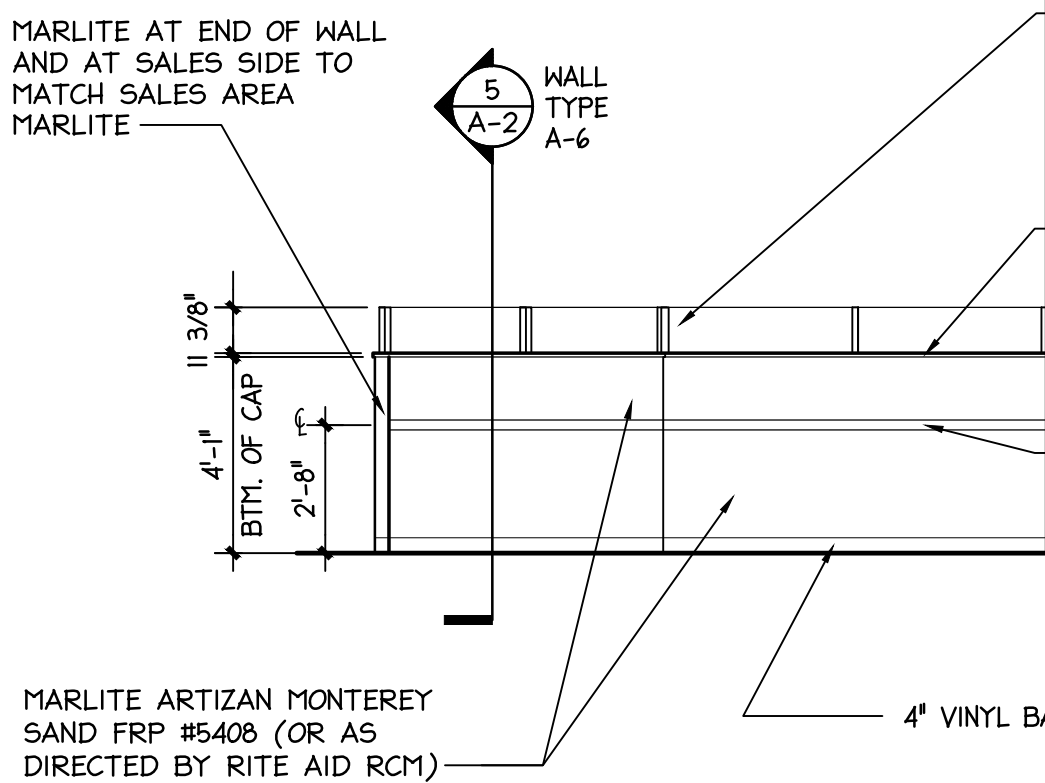
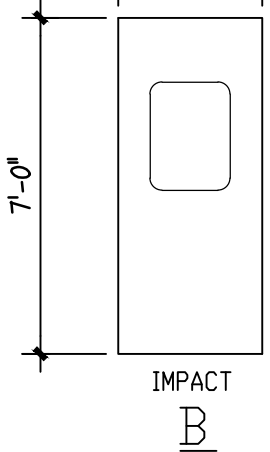
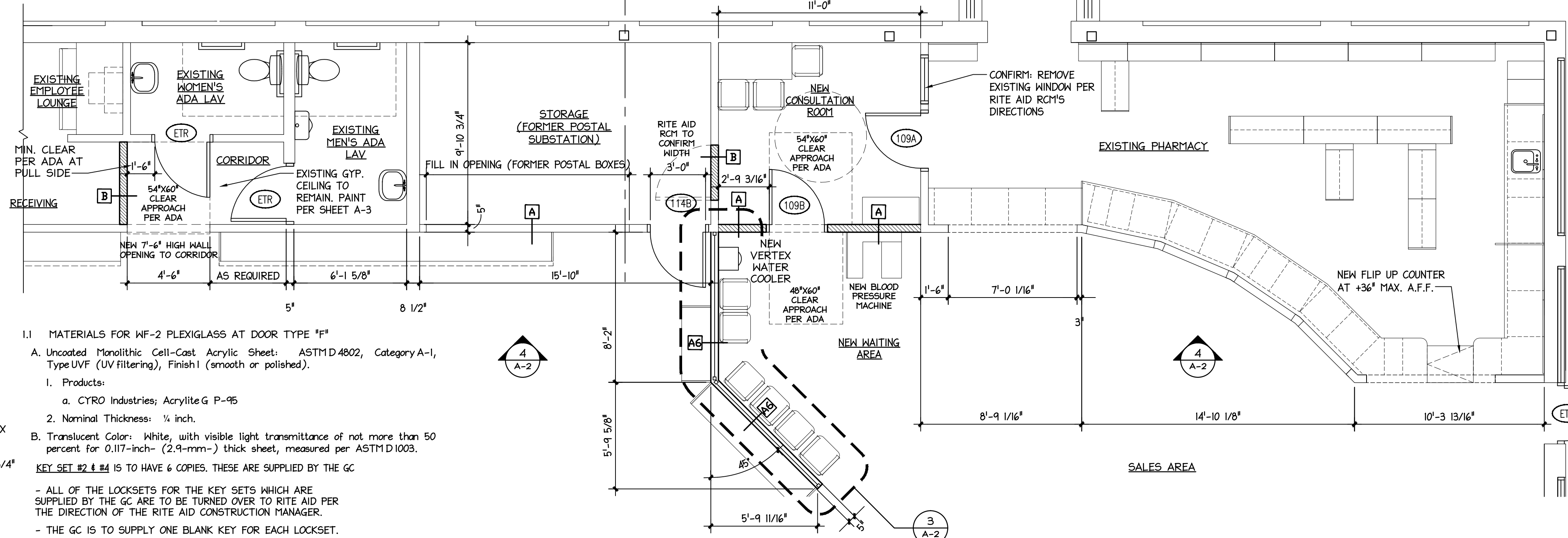
- 1 FLOOR BUMPER 406 1/2 X PA 28 X HB-IVES
- 1-1/2 PAIR BUTTS, 4-1/2 X 4-1/2 STANLEY FBB 191 X US 26D NRP
- 1 CLOSER, CORBIN-RUSSWIN DC 6210X 689 X M54
- 1 LOCK, CORBIN-RUSSWIN CL 3357 NZD X 626 X 2 3/4" B.S. (STOREROOM); NOT FOR DOOR #103
- 1 LOCK/LATCH GUARD-IVES LG13 U532D

- 1.1 MATERIALS FOR WF-2 PLEXIGLASS AT DOOR TYPE "F"
- A. Uncoated Monolithic Cell-Cast Acrylic Sheet: ASTM D4802, Category A-1, Type UVF (UV filtering), Finish (smooth or polished).

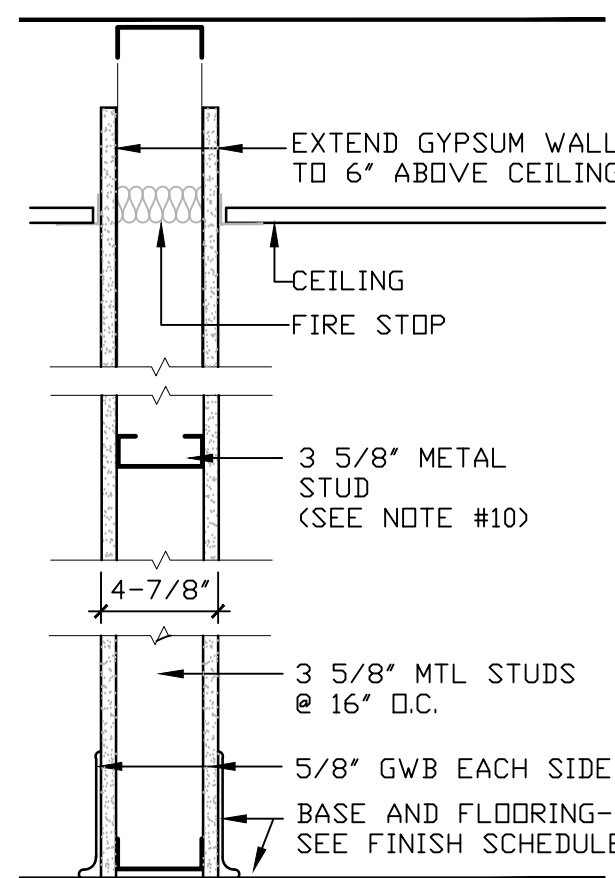
1. Products:
- a. CYRO Industries; Acrylite G P-95
2. Nominal Thickness: 1/8 inch.
3. Translucent Color: White, with visible light transmittance of not more than 50 percent for 0.117-inch- (2.9-mm-) thick sheet, measured per ASTM D1003.

KEY SET #2 & #4 IS TO HAVE 6 COPIES. THESE ARE SUPPLIED BY THE GC

- ALL OF THE LOCKSETS FOR THE KEY SETS WHICH ARE SUPPLIED BY THE GC ARE TO BE TURNED OVER TO RITE AID PER THE DIRECTION OF THE RITE AID CONSTRUCTION MANAGER.
- THE GC IS TO SUPPLY ONE BLANK KEY FOR EACH LOCKSET.



NOTE: CONSTRUCT WALL PER TEMPLATE PROVIDED BY RITE AID'S CABINET SHOP TO ASSURE TOP CAP FITS



WALL TYPES

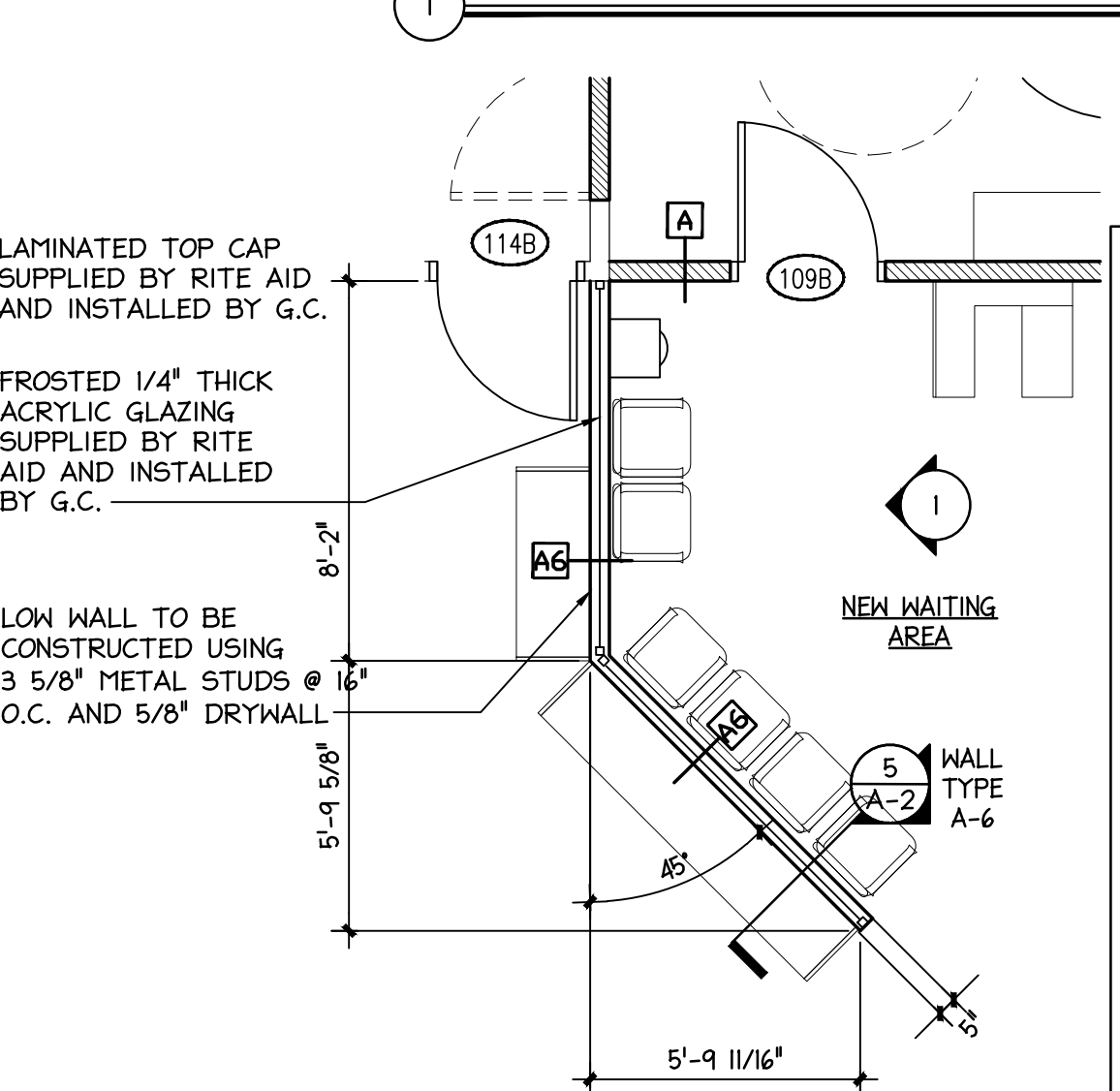
SCALE: 1 1/2" = 1'-0"

NOTES FOR SUBSTRATE (DRYWALL) TREATMENT/REPAIR AT WALL AREA TO RECEIVE NEW "GREEN LEAVES" WALL GRAPHIC:

- MARLITE ON THE ENTIRE FRONT WALL TO BE REMOVED. DRYWALL WILL NEED TO BE REMOVED AND REPLACED AS NECESSARY DUE TO THE DAMAGE LEFT BEHIND FROM MARLITE ADHESIVE TEARING THE DRYWALL FACE.
 - EXISTING FRONT HINDON TRIMS (SALES SIDE) ARE INSTALLED ON TOP OF THE MARLITE WALL PANELS IN SOME INSTANCES (GC TO REVIEW). INSIDE FRAME THAT THE CASING IS ATTACHED TO MUST BE REMOVED AND CUT BACK BY 1/4", AND THEN RE-INSTALLED AS WELL AS THE BUILD-OUTS AND THE CASING TRIM.
 - FILL / SAND / FILL / PAINT WOOD TRIMS FOR NEAT, FINISHED APPEARANCE AS REQUIRED.
 - THE PRE-WALL COVERING APPLICATION IS INTENDED TO PREP THE WALL TO RECEIVE WALL COVERING PASTE AND IS NOT INTENDED TO SEAL OR COVER THE EXISTING PAINT. IN-L-X SUPERIOR SPECIALTY COATINGS WP 3001 SHERWIN WILLIAMS LATEX PRIMER SEALER B51 THAT IS WHITE IN COLOR TO BE USED TO SEAL OLD PAINT COLOR AND CREATE A WHITE BACKGROUND.
 - REMOVE EXISTING MARLITE OR ANY WALL COVERING AND PREPARE SURFACE FOR NEW RX WALL MURAL COVERING BY BLOCKING, SHEET ROCK, PRIME, TAPE AND PASTE, ETC.
- EXECUTION**
- EXAMINATION
 - EXAMINE SUBSTRATES AND CONDITIONS, WITH INSTALLER PRESENT, FOR COMPLIANCE WITH REQUIREMENTS FOR LEVELNESS, WALL PLUMBNESS, MAXIMUM MOISTURE CONTENT, AND OTHER CONDITIONS AFFECTING PERFORMANCE OF WORK.
 - PROCEED WITH INSTALLATION ONLY AFTER UNSATISFACTORY CONDITIONS HAVE BEEN CORRECTED.
- 1.2 PREPARATION**
- COMPLY WITH MANUFACTURER'S (WALL MURAL) WRITTEN INSTRUCTIONS FOR SURFACE PREPARATION, INCLUDE APPLICATION OF SEALER.
 - SHERWIN WILLIAMS PRE-WALLCOVERING PRIMER.
- 1.3 GYPSUM BOARD ASSEMBLIES**
- GENERAL ACRYL JOINT TREATMENT AT GYPSUM BOARD JOINTS (BOTH DIRECTIONS), FLANGES OF CORNER BEAD, EDGE TRIM, AND CONTROL JOINTS, PENETRATIONS, FASTENER HEADS, SURFACE DEFECTS, AND ELSEWHERE AS REQUIRED TO PREPARE GYPSUM BOARD SURFACES FOR DECORATION AND LEVELS OF GYPSUM BOARD FINISH INDICATED.
 - PRE-FILL OPEN JOINTS, ROUNDED OR BEVELLED EDGES, AND DAMAGED AREAS USING SETTING-TYPE JOINT COMPOUND.
 - APPLY JOINT TAPE OVER GYPSUM BOARD JOINTS AND TO TRIM ACCESSORIES WITH CONCEALED FACE FLANGES AS RECOMMENDED BY TRIM ACCESSORY MANUFACTURER AND AS REQUIRED TO PREVENT CRACKS FROM DEVELOPING IN JOINT COMPOUND AT FLANGE EDGES.
 - LEVELS OF GYPSUM BOARD FINISH: PROVIDE THE FOLLOWING LEVELS OF GYPSUM BOARD FINISH PER GA-214.
- 1.4 LEVEL 4, INSTALL AS FOLLOWS:**
- EMBEDDING AND FIRST COAT: ALL-PURPOSE READY-MIXED JOINT COMPOUND.
 - FILL (SECOND) COAT: ALL-PURPOSE READY-MIX JOINT COMPOUND.
 - FINISH (THIRD) COAT: READY-MIX TOPPING COMPOUND.
 - ALL JOINTS AND INTERIOR ANGLE SHALL BE TAPE EMBEDDED IN JOINT COMPOUND AND THREE SEPARATE COATS OF JOINT COMPOUND APPLIED OVER ALL JOINTS, ANGLES, FASTENER HEADS AND ACCESSORIES.
 - SURFACE SHALL BE SMOOTH AND FREE OF TOOL MARKS AND RIDGES.
- FINISHES MUST BE APPROVED BY RAC REPRESENTATIVE

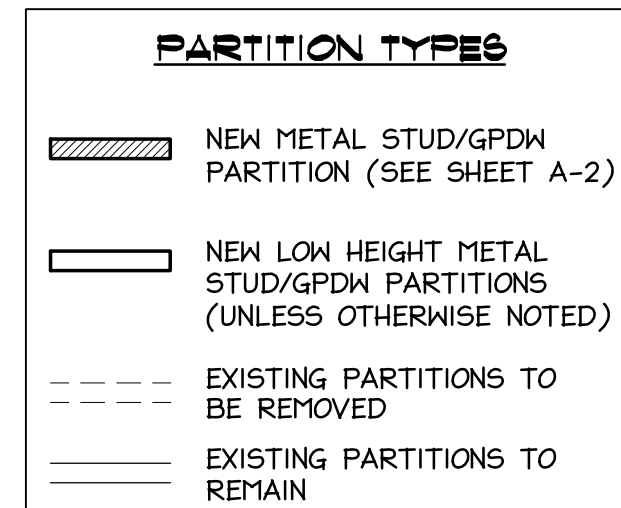
MARLITE ARTIZAN MONTEREY SAND FRP #5408 (OR AS DIRECTED BY RITE AID RCM)

WALL ELEVATION



WAITING AREA PLAN

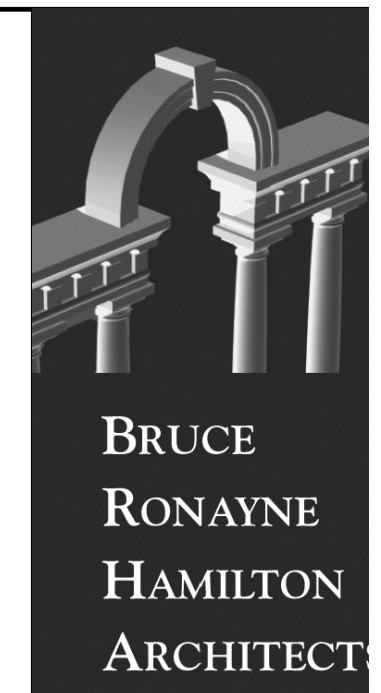
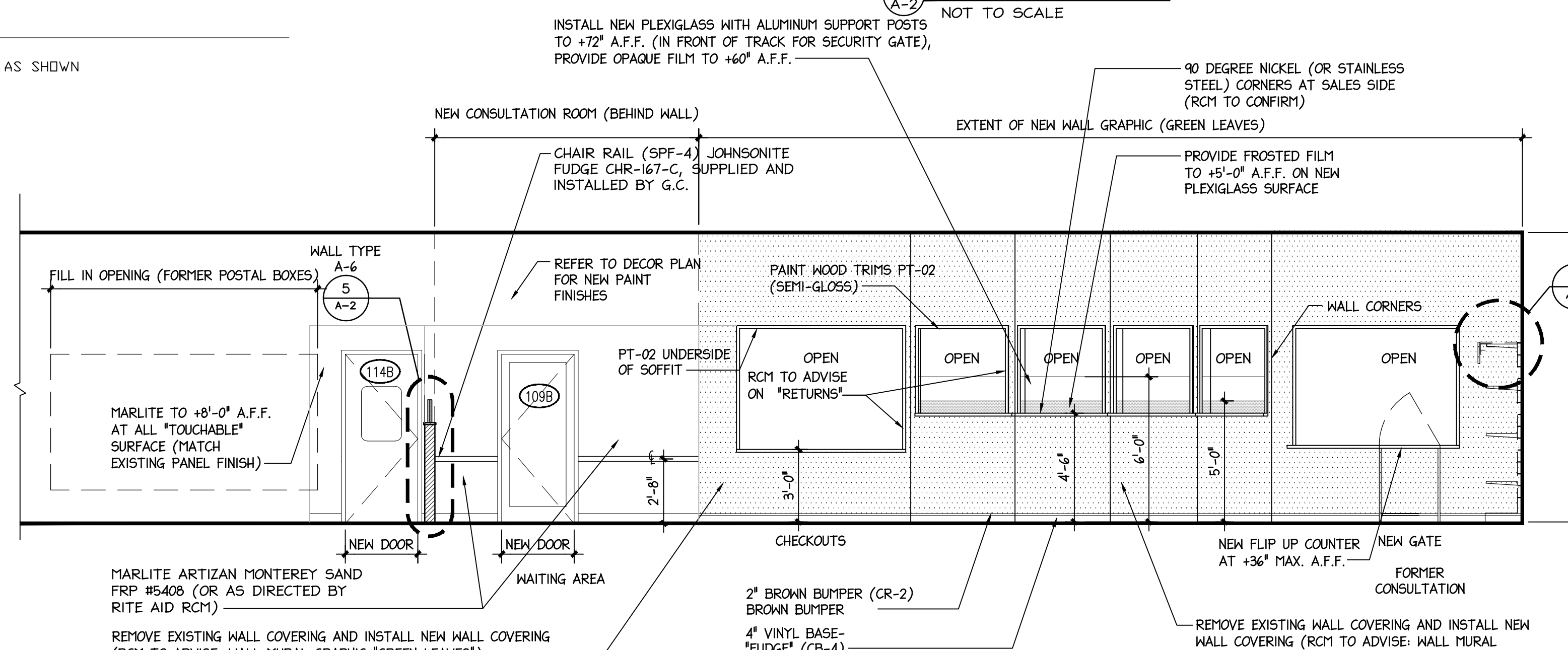
SCALE: 1/4" = 1'-0"



- NOTES**
- CHARACTERS AND SYMBOLS SHALL CONTRAST WITH THEIR BACKGROUND.
 - IDENTIFICATION SYMBOLS ARE TO BE ON WALL ADJACENT DOOR 60" ABOVE FLOOR AND ARE TO BE DISTINCTLY DIFFERENT FROM DOOR AND WALL IN COLOR AND CONTRAST.
 - PROVIDE ROOM IDENTIFICATION SIGN ON LATCH SIDE OF DOOR.
 - LETTERS & NUMBERS ON SIGNS SHALL BE RAISED 1/32" MIN. SHALL BE A MIN. OF 5/8" HIGH & SHALL BE SANS-SERIF UPPERCASE CHARACTERS. A.D.A. SIGNAGE ACCOMPANIED BY GRADE 2 BRAILLE.
 - REGULATORY SIGNS TO BE TYPICALLY ADA COMPLIANT TACTILE 3-D PLAQUES PER CODE REQUIREMENTS.
 - SIGNS TO BE A TYPICAL ONE PIECE INJECTION MOLDED FABRICATION WITH RAISED SECOND SURFACE GRAPHICS.
 - STANDARD BLUE ADA SIGN PROVIDED BY GENERAL CONTRACTOR. MODEL # MEN ADA 304, AND MODEL # WOMEN ADA 305. DIMENSIONS: 6"x9".
 - BRAILLE SHOWN IS FOR PLACEMENT ONLY. USE CORRECT BRAILLE FOR SIGN PRODUCTION.
 - THE ADA SIGNAGE CAN BE OBTAINED FROM EMECCO CORPORATION. CONTACT INFO. PH# 1-800-273-3984 (Ext.7502)

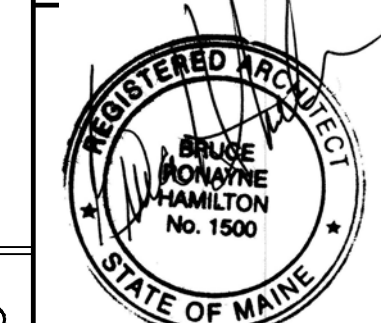
ADA SIGNAGE

NOT TO SCALE



ARCHITECTURE
LAND PLANNING
INTERIOR DESIGN
3D VISUALIZATION

833 TURNPIKE ROAD
P.O. BOX 104
NEW IPSWICH
NEW HAMPSHIRE 03071



THIS DESIGN AND THE DRAWINGS THEREFORE PREPARED FOR THIS PROJECT ARE THE PROPERTY OF THE ARCHITECT. BRUCE RONAYNE HAMILTON, ARCHITECT INC. AND THE DESIGN AND/OR DRAWING MAY NOT BE REPRODUCED OR COPIED FOR ANY USE OTHER THAN THAT FOR THE ORIGINAL PROJECT FOR WHICH THE DESIGN AND/OR DRAWINGS WERE PREPARED, WITHOUT THE EXPRESSED WRITTEN PERMISSION OF THE ARCHITECT. BRUCE RONAYNE HAMILTON ARCHITECTS INC. IS A BUILDING PROFESSIONAL SERVICE PROVIDER. ANY BUILDING DEPARTMENT, UNLESS OTHERWISE NOTED, SHALL REQUIRE THE ORIGINAL SIGNATURE OF THE ARCHITECT, BRUCE RONAYNE HAMILTON, ARCHITECT INC.

ISSUED FOR GC BIDDING/BUILDING PERMIT

1-7-14

PROJECT: RITE AID STORE #4133 PPR
10 FOREST AVENUE
PORTLAND, MAINE

SUBJECT: PHARMACY PLANS, ELEVATIONS & DETAILS

DATE: 1-7-14

SCALE: AS NOTED

NO. 13-131

SHEET NO. A-2