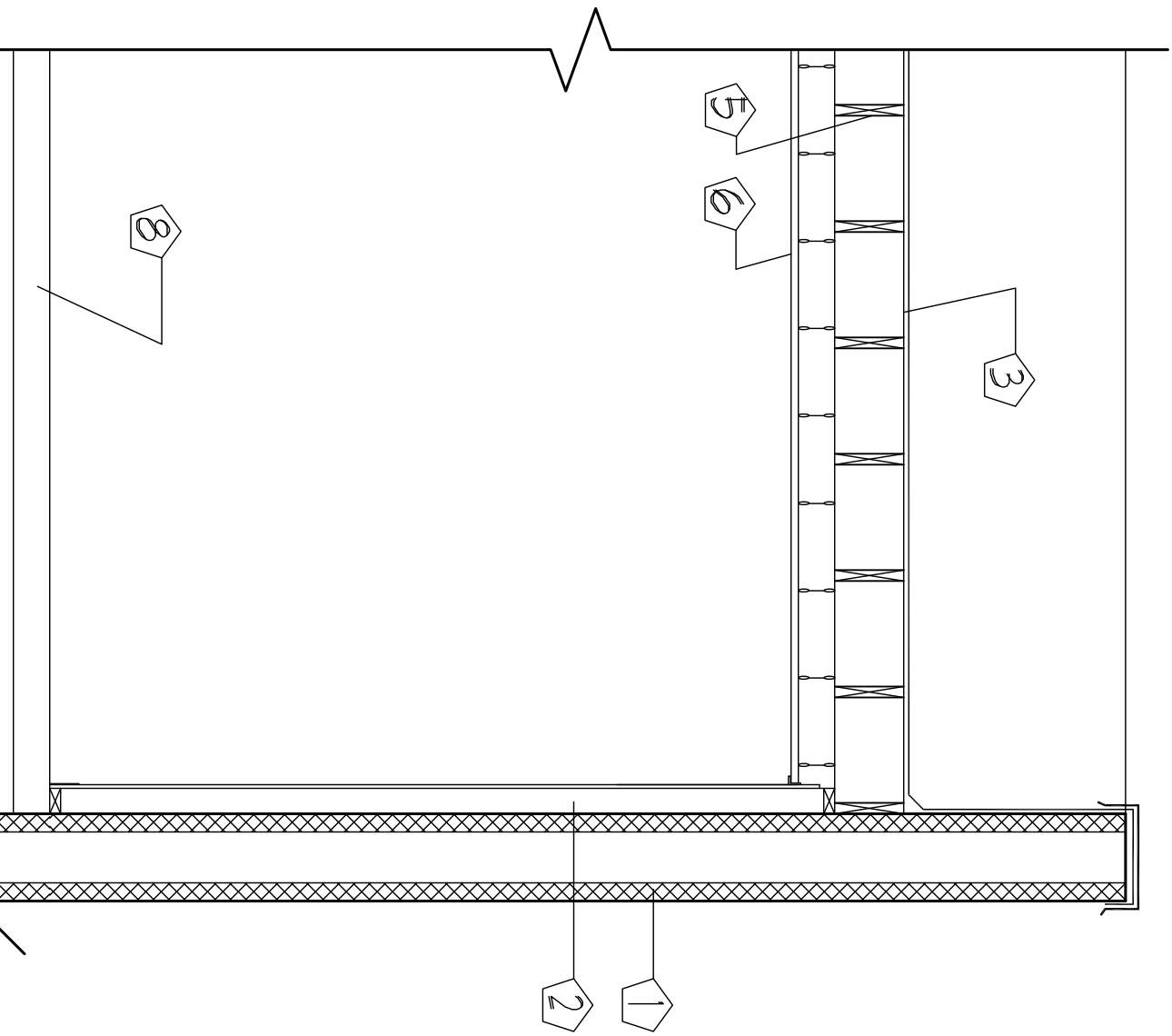
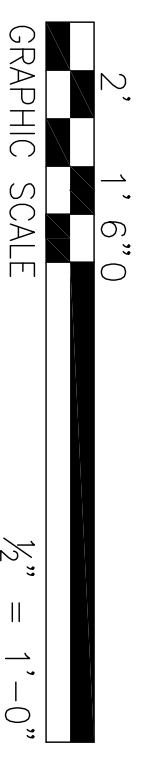


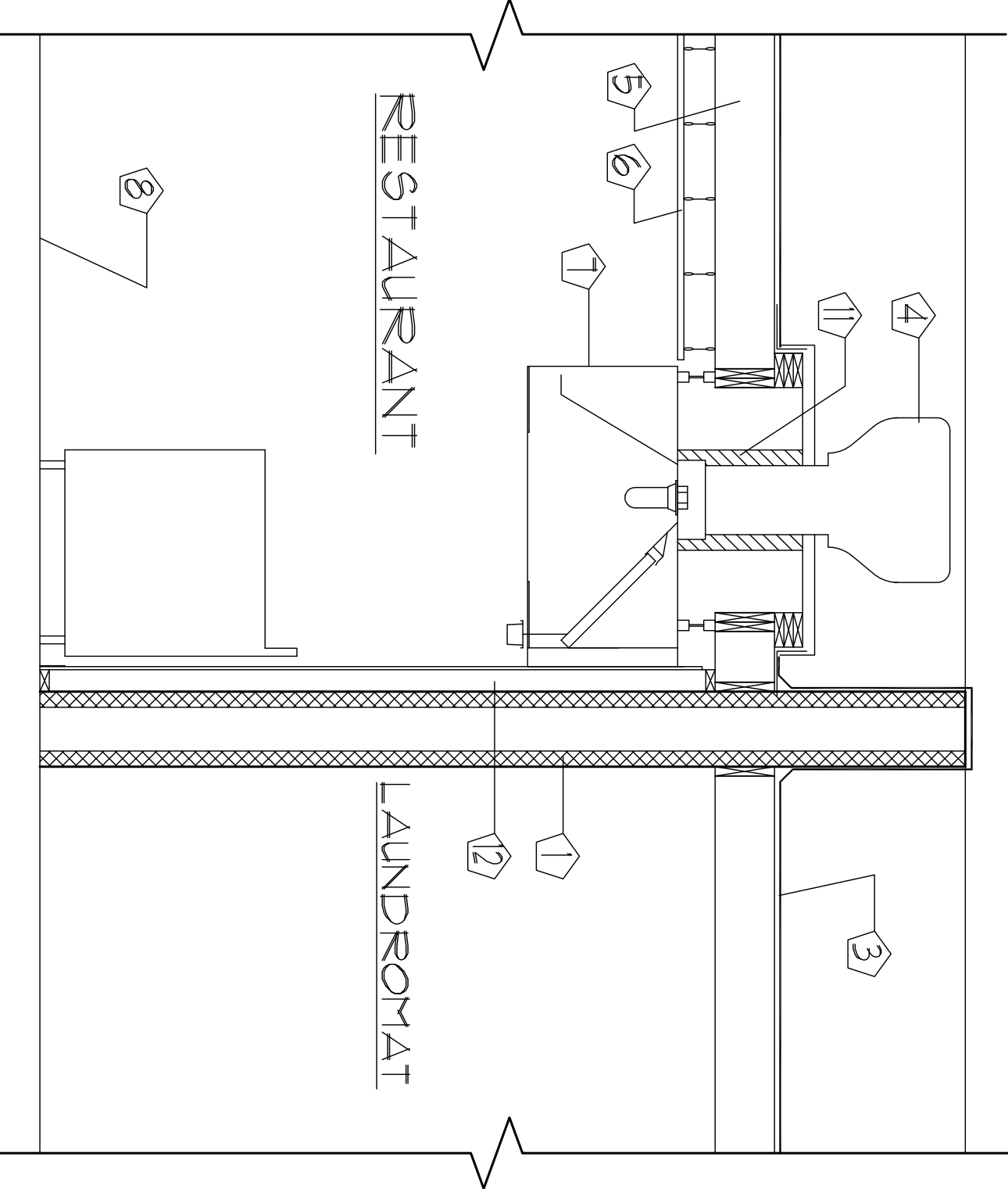
3 TYPICAL NEW PARTITION WALL
1/2" = 1'-0"



2 TYPICAL WALL EXISTING
1/2" = 1'-0"

KEYED NOTES:

- 1 1'-0" THICK CMU WALL - 3 HOUR FIRE RESISTANCE RATING.
- 2 2X4 STUD WALL, G.B. FINISH ONE SIDE - PTD., BASE.
- 3 EPDM MEMBRANE ROOFING.
- 4 ROOF TOP AIR HANDLER.
- 5 2X10 @ 16" OC.
- 6 HUNG ACT CEILING.
- 7 COMMERCIAL HOOD - MEETS REQUIREMENTS OF NFPA 96 SECTION 4.2.2.
- 8 CONCRETE FLOOR.
- 9 2X4 STUD WALL WITH 5/8" G.B. EA. SIDE - PTD., BASE EA. SIDE CAVITY FILLED WITH MINERAL WOOL BATTING FOR SOUND ATTENUATION.
- 10 SOLID WOOD BLOCKING AS REQUIRED.
- 11 EXHAUST DUCT - WRAPPED PER NFPA 96 SECTION 4.2.3.2.
- 12 WALL FINISH AT COOKING EQUIPMENT - PER NFPA 96 SECTION 4.2.

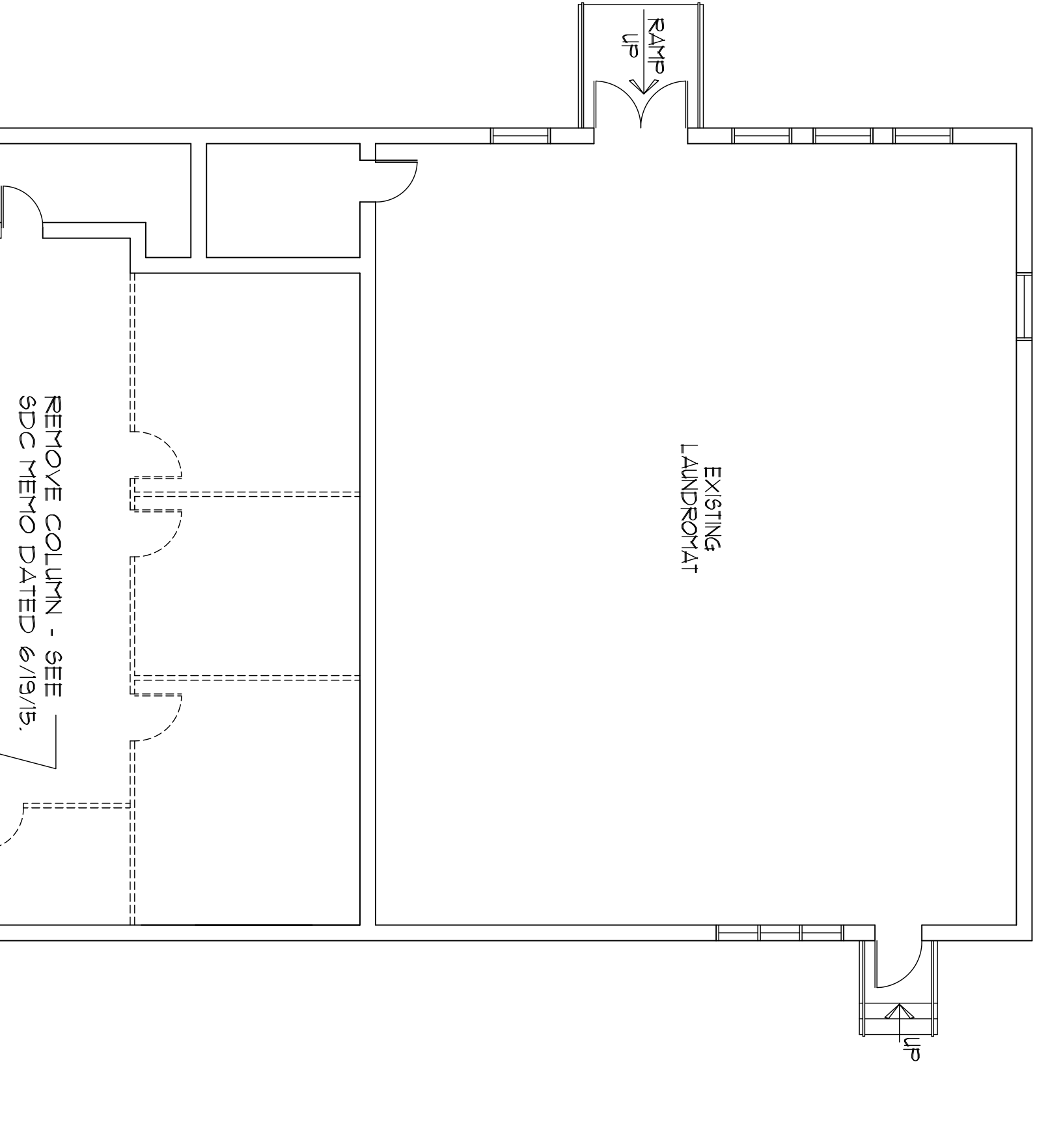
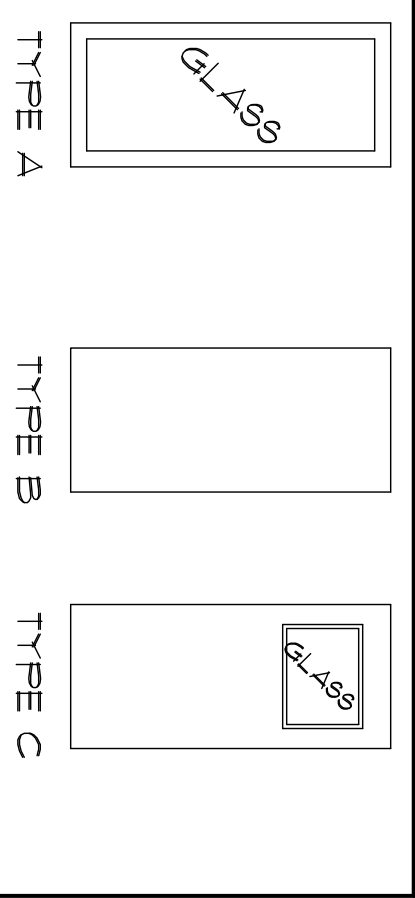


1 SECTION @ HOOD
1/2" = 1'-0"

No.	SIZE		DOOR		FRAME		LABEL	FUNCTION	REMARKS	No.
	Thick	Type	Material	Finish	Material	Finish				
1	3'-0" X 6'-8"	--	A	ALUM.	-	ALUM	---	Panic Type Exit Device	Dining 107 to exterior. Existing alum. storefront door to remain.	1
2	3'-6" X 6'-8"	-	A	ALUM	-	ALUM	---	Panic Type Exit Device	Dining 107 to exterior. Existing alum. storefront door to remain.	2
3	3'-0" X 6'-8"	1 3/4"	B	SC WOOD	Pdl.	Wood	---	Privacy	Toilet 105 to Lav. 109.	3
4	3'-0" X 6'-8"	1 3/4"	B	SC WOOD	Pdl.	Wood	---	Privacy	Toilet 104 to Lav. 109.	4
5	3'-0" X 6'-8"	1 3/4"	C	SC WOOD	Pdl.	HM	---	Storeroom	Corr. 110 to Dry Storage 103.	5
6	(2) 2'-4" X 6'-8"	1 3/4"	C	SC Mddled	Pdl.	Wood	---	Free Swinging	Kitchen 100 to / from Dining 107. Fitted with push plates.	6
7	3'-0" X 6'-8"	1 3/4"	B	HM	Pdl.	HM	1 HR.	Storeroom	Kitchen 107 to Mech. Rm. 101.	7
8	2'-10" X 6'-8"	1 3/4"	B	SC WOOD	Pdl.	Wood	---	Privacy	Toilet 108 to Lav. 109.	8
8A	2'-10" X 6'-8"	1 3/4"	B	SC WOOD	Pdl.	Wood	---	Privacy	Toilet 108A to Lav. 109.	8A

GENERAL DOOR NOTES:
1. DOORS 1 & 2 ARE EQUIPPED WITH PANIC TYPE EXIT DEVICES WHICH ARE ALWAYS OPERABLE IN THE DIRECTION OF EGRESS.
2. ALL LOCKSETS TO INCLUDE LEVER HANDLES.

DOOR TYPES



LEGEND:
EXISTING WALL OR ITEM TO REMAIN
EXISTING WALL TO BE REMOVED

4 DEMOLITION PLAN
1/8" = 1'-0"

