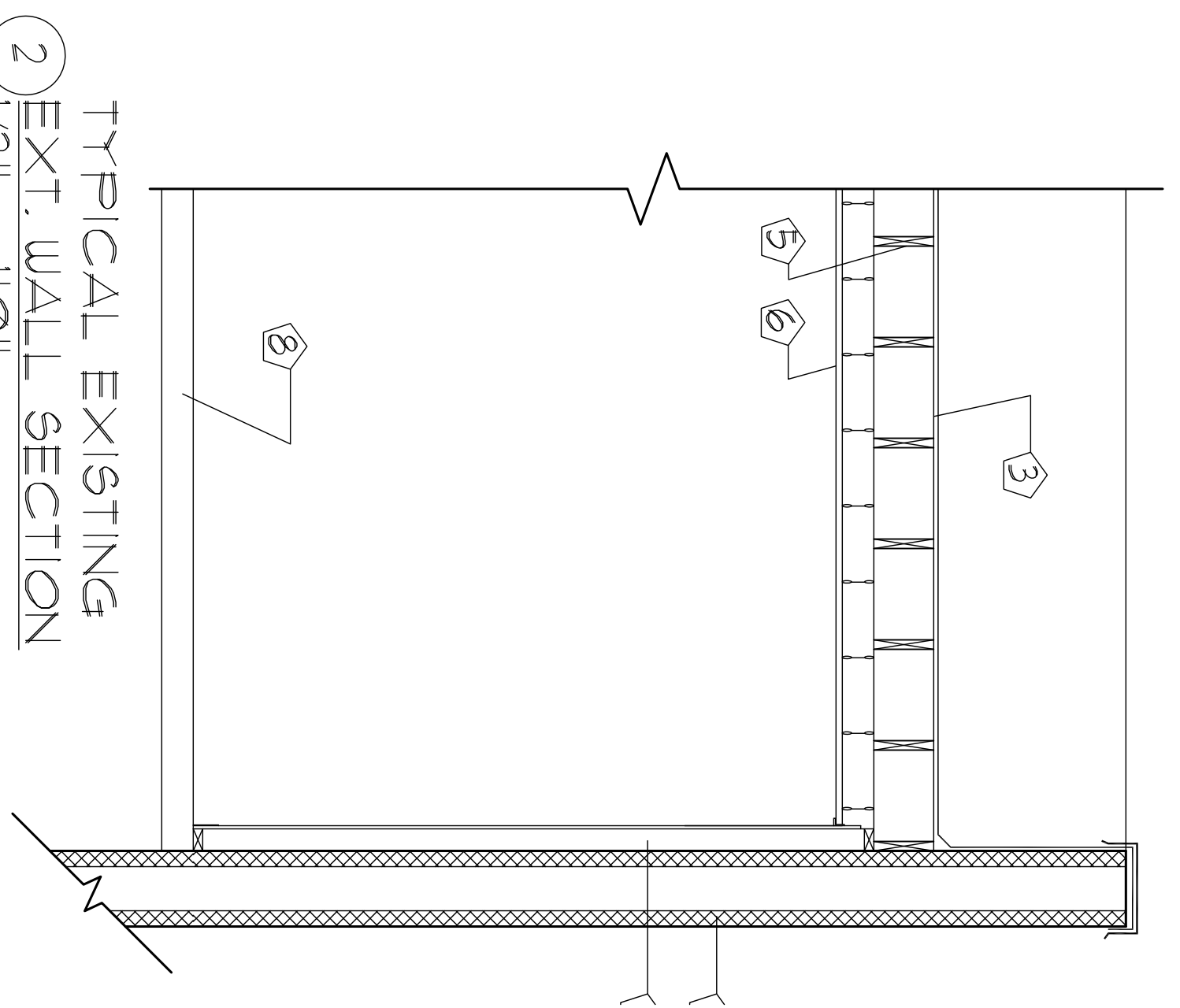
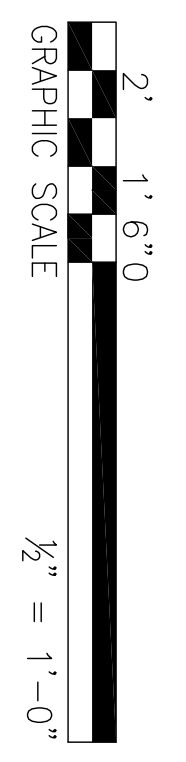
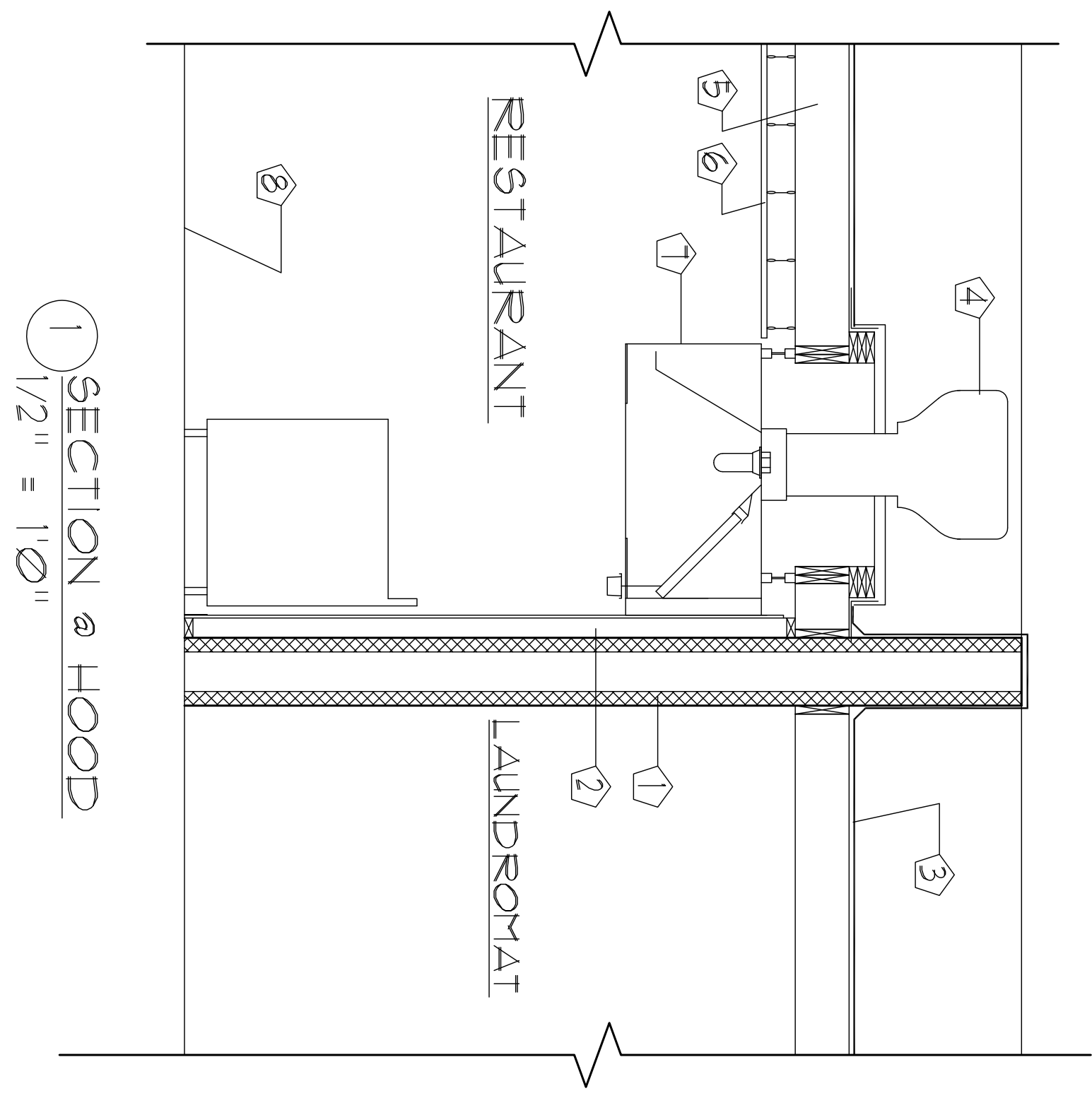


3 TYPICAL NEW PARTITION WALL
1/2" = 1'-0"



2 TYPICAL WALL EXISTING
1/2" = 1'-0"



1 SECTION OF HOOD
1/2" = 1'-0"

KEYED NOTES:

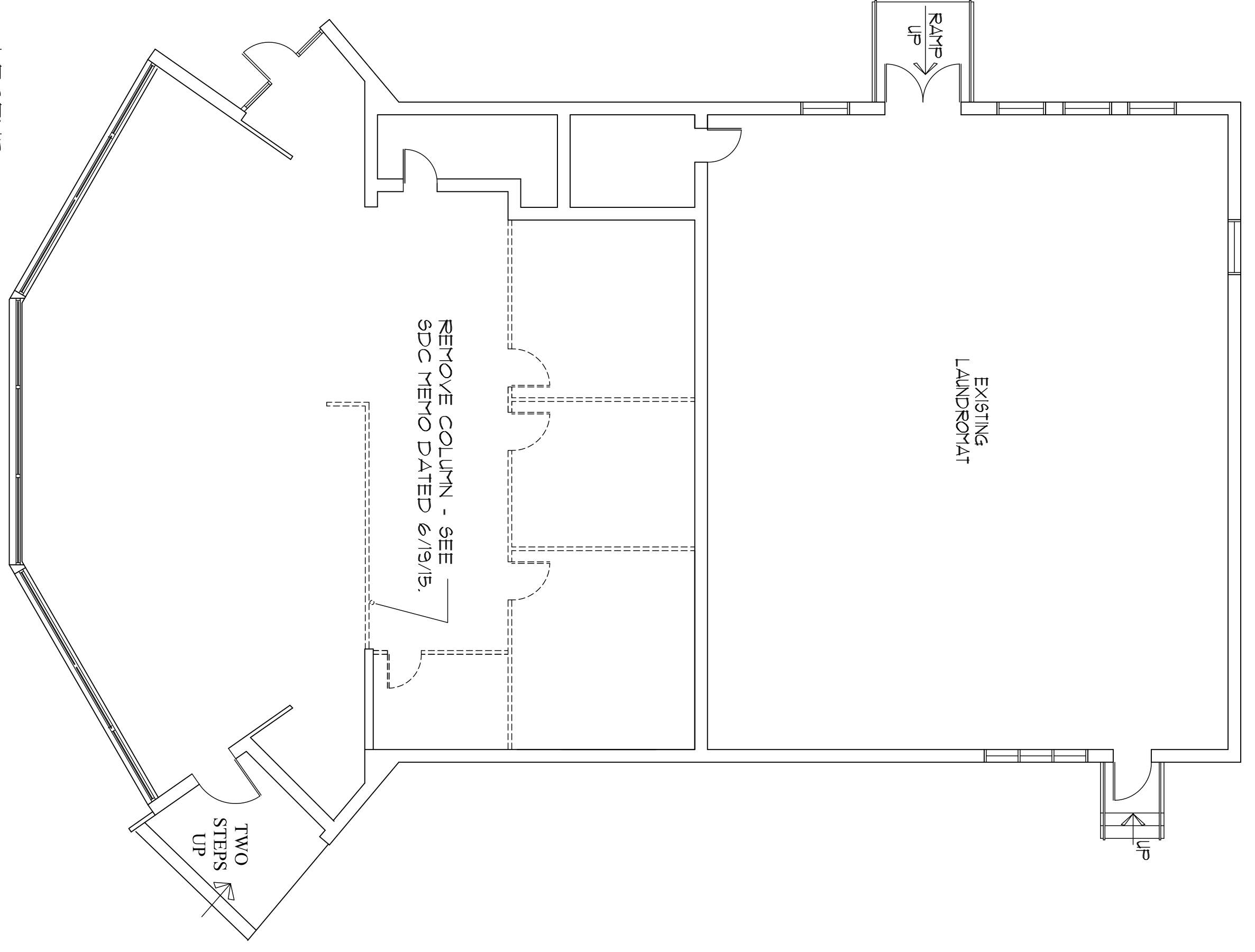
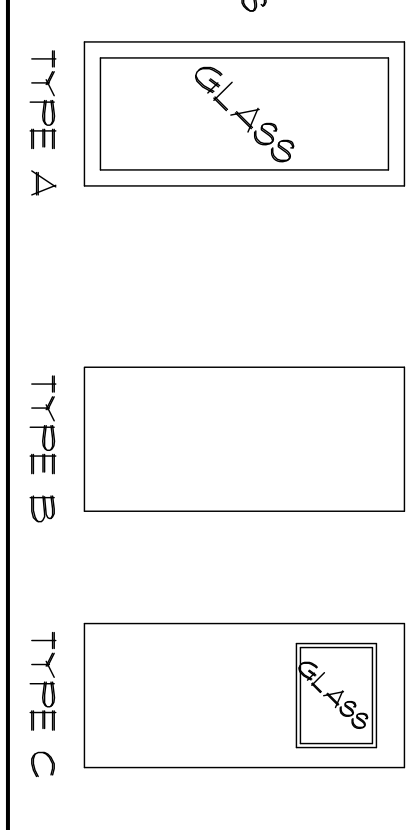
- 1 1'-0" THICK CMU WALL - 3 HOUR FIRE RESISTANCE RATING.
- 2 2X4 STUD WALL, G.B. FINISH ONE SIDE - PTD, BASE.
- 3 EPDM MEMBRANE ROOFING.
- 4 ROOF TOP AIR HANDLER.
- 5 2X10 @ 16" OC.
- 6 HUNG ACT CEILING.
- 1 COMMERCIAL HOOD.
- 8 CONCRETE FLOOR.
- 3 2X4 STUD WALL WITH 5/8" G.B. EA. SIDE - PTD, BASE EA. SIDE, CAVITY FILLED WITH MINERAL WOOL BATTING FOR SOUND ATTENUATION.
- 8 SOLID WOOD BLOCKING AS REQUIRED.

No.	SIZE		DOOR		FRAME		LABEL	FUNCTION	REMARKS	No.
	Size	Thick	Type	Material	Material	Finish				
1	3'-0" X 6'-8"	--	A	ALUM.	ALUM.	-	---	Crossbar Exit Device	Dining 107 to exterior. Existing alum. storefront door to remain.	1
2	3'-6" X 6'-8"	-	A	ALUM.	ALUM.	-	---	Crossbar Exit Device	Dining 107 to exterior. Existing alum. storefront door to remain.	2
3	3'-0" X 6'-8"	1 3/4"	B	SC WOOD	Wood	Ptd.	---	Privacy	Dining 107 to Toilet 105	3
4	3'-0" X 6'-8"	1 3/4"	B	SC WOOD	Wood	Ptd.	---	Privacy	Dining 107 to Toilet 104	4
5	3'-0" X 6'-8"	1 3/4"	C	SC WOOD	Wood	Ptd.	---	Storeroom	Dry Storage to Corr. 110.	5
6	(2) 2'-6" X 6'-8"	1 3/4"	C	SC WOOD	Wood	Ptd.	---	Free Swinging	Kitchen 100 to / from Dining 107. Fitted with push plates.	6
7	3'-0" X 6'-8"	1 3/4"	B	HM	HM	Ptd.	1 HR.	Storeroom	Kitchen 107 to Mech. Rm. 101. Existing HM door to remain.	7
8	(2) 2'-4" X 6'-8"	1 3/4"	B	SC WOOD	HM	Ptd.	---	Storeroom	Jan. Cst. 108 to lav. 109.	7

DOOR SCHEDULE

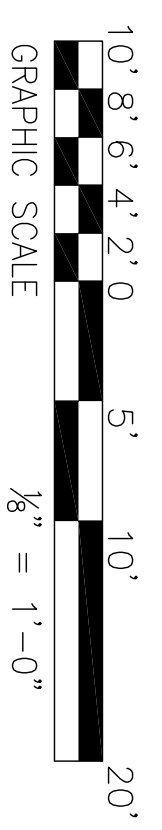
GENERAL DOOR NOTES:
1. DOORS 1 & 2 ARE EQUIPPED WITH CROSSBAR EXIT DEVICES WHICH ARE ALWAYS OPERABLE IN THE DIRECTION OF EGRESS.
2. ALL LOCKSETS TO INCLUDE LEVER HANDLES.

DOOR TYPES



LEGEND:
EXISTING WALL OR ITEM TO REMAIN
EXISTING WALL TO BE REMOVED

4 DEMOLITION PLAN
1/8" = 1'-0"



Drawing
DEMOLITION PLAN, DETAILS, SCHEDULES
Project:
INTERIOR FIT-UP
660 FOREST AVENUE
PORTLAND, MAINE

Date
6/19/15
Revisions:
10/9/15 - door schedule changed due to change in kitchen & toilet room layouts.

Scale
AS NOTED

Architect
SHIELDS ARCHITECTURE
CUMBERLAND, MAINE
(207) 776-8926

Builder:
HARDYPOND CONSTRUCTION
7 TEE DRIVE
PORTLAND, MAINE 04103