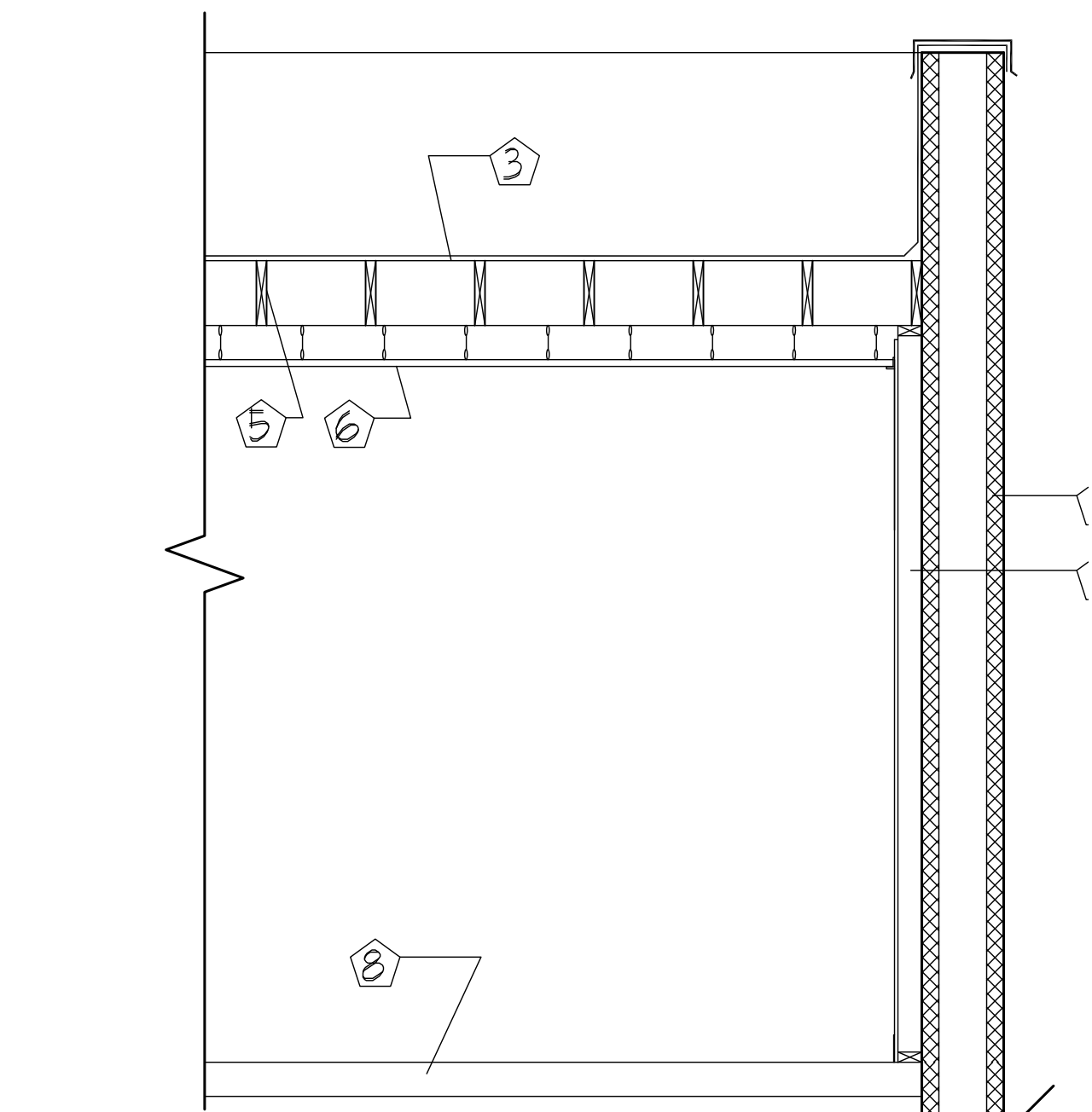
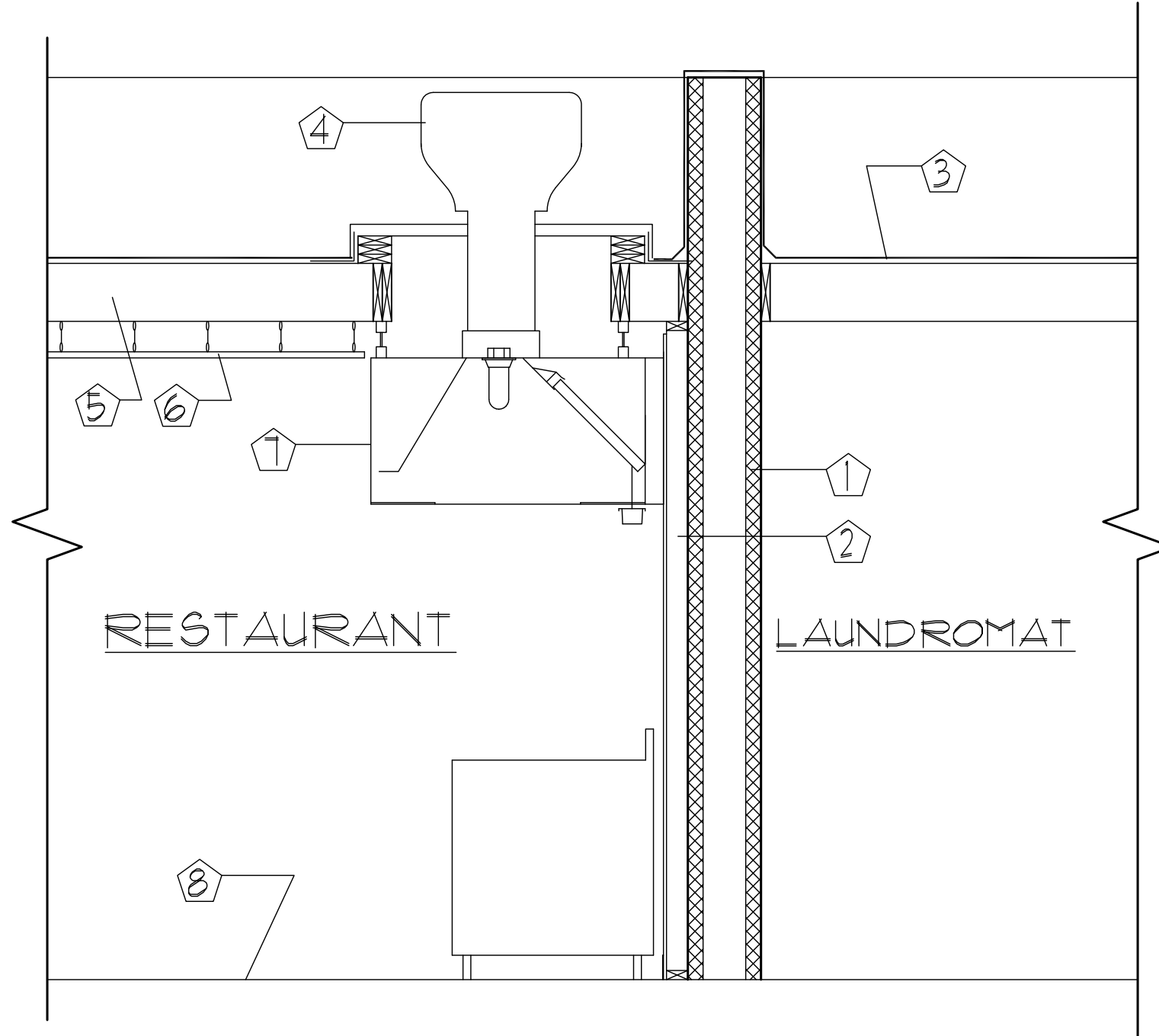


③ TYPICAL NEW PARTITION WALL
1/2" = 1'-0"



② TYPICAL EXISTING EXT. WALL SECTION
1/2" = 1'-0"



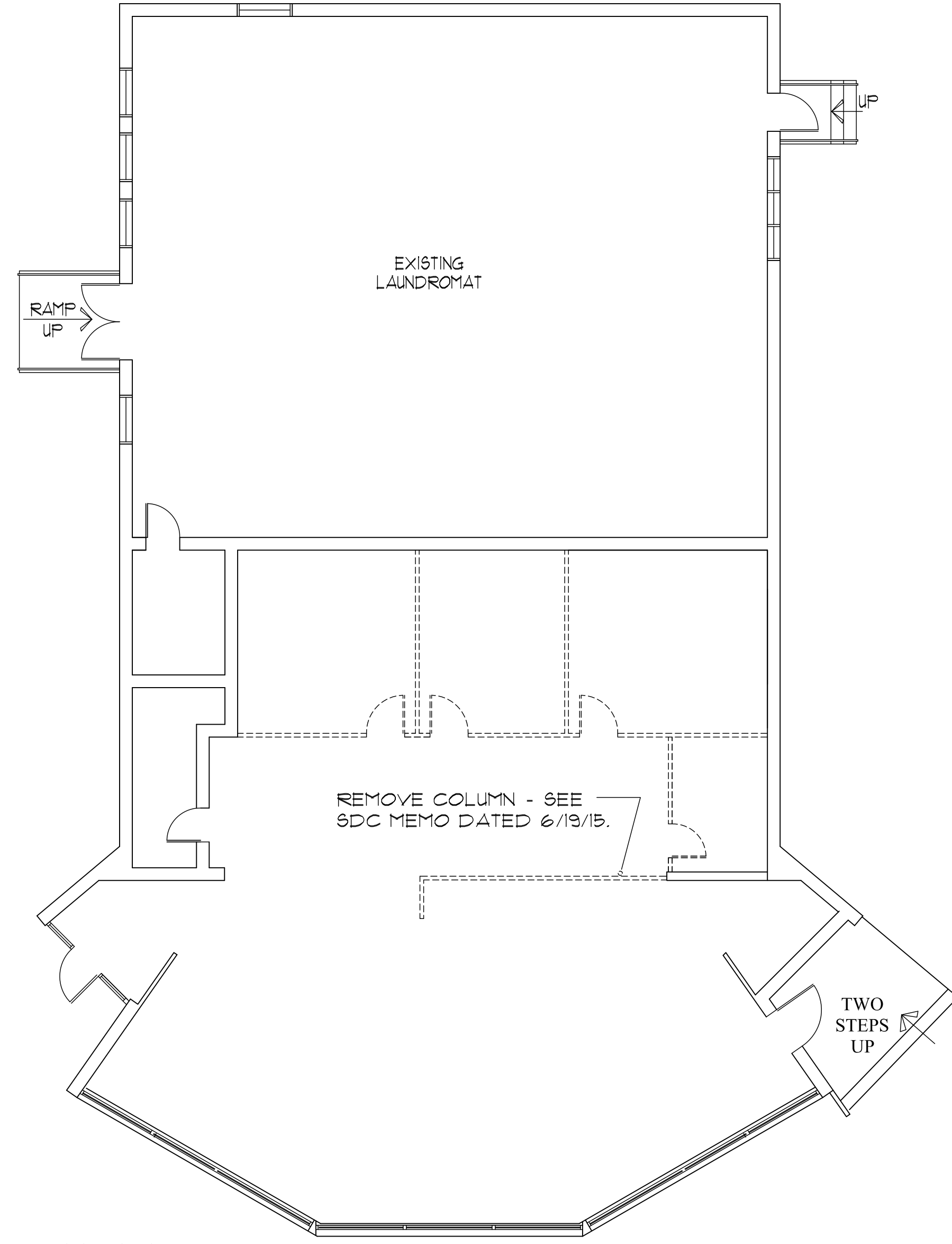
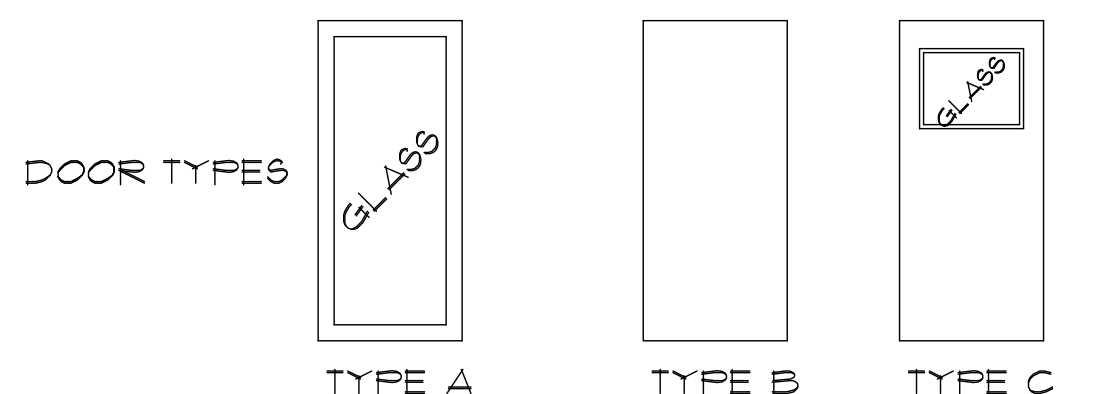
① SECTION @ HOOD
1/2" = 1'-0"

KEYED NOTES:

- ① 1'-0" THICK CMU WALL - 3 HOUR FIRE RESISTANCE RATING.
- ② 2X4 STUD WALL, G.B. FINISH ONE SIDE - PTD., BASE.
- ③ EPDM MEMBRANE ROOFING.
- ④ ROOF TOP AIR HANDLER.
- ⑤ 2X10 @ 16" OC.
- ⑥ HUNG ACT CEILING.
- ⑦ COMMERCIAL HOOD.
- ⑧ CONCRETE FLOOR.
- ⑨ 2X4 STUD WALL WITH 5/8" G.B. EA. SIDE - PTD., BASE EA. SIDE, CAVITY FILLED WITH MINERAL WOOL BATTING FOR SOUND ATTENUATION.
- ⑩ SOLID WOOD BLOCKING AS REQUIRED.

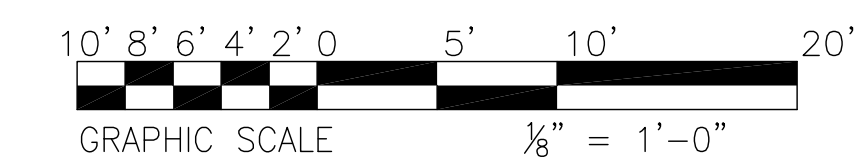
DOOR SCHEDULE											
No.	SIZE		DOOR			FRAME		LABEL	FUNCTION	REMARKS	No.
	Size	Thick	Type	Material	Finish	Material	Finish				
1	3'-0" X 6'-8"	--	A	ALUM.	-	ALUM	-	---	Crossbar Exit Device	Dining 107 to exterior. Existing alum. storefront door to remain.	1
2	3'-6" X 6'-8"	-	A	ALUM	-	ALUM	-	---	Crossbar Exit Device	Dining 107 to exterior. Existing alum. storefront door to remain.	2
3	3'-0" X 6'-8"	1 3/4"	B	SC WOOD	Ptd.	Wood	Ptd.	---	Passage	Dining 107 to Toilet 105.	3
4	3'-0" X 6'-8"	1 3/4"	B	SC WOOD	Ptd.	Wood	Ptd.	---	Passage	Dining 107 to Toilet 104.	4
5	3'-0" X 6'-8"	1 3/4"	C	SC WOOD	Ptd.	Wood	Ptd.	---	Free Swinging	Bar 106 to Kitchen 100. Fitted with push plate & pull.	5
6	(2) 2'-8" X 6'-8"	1 3/4"	C	SC Molded	Ptd.	Wood	Ptd.	---	Free Swinging	Kitchen 100 to / from Dining 107. Fitted with push plates.	6
7	3'-0" X 6'-8"	1 3/4"	B	HM	Ptd.	HM	Ptd.	---	Storeroom	Kitchen 107 to Mech. Rm. 101. Existing HM door to remain.	7

GENERAL DOOR NOTES:
 1. DOORS 1 & 2 ARE EQUIPPED WITH CROSSBAR EXIT DEVICES WHICH ARE ALWAYS OPERABLE IN THE DIRECTION OF EGRESS.
 2. ALL LOCKSETS TO INCLUDE LEVER HANDLES.



LEGEND:
 EXISTING WALL OR ITEM TO REMAIN
 EXISTING WALL TO BE REMOVED

④ DEMOLITION PLAN
1/8" = 1'-0"



Builder:
HARDYOND CONSTRUCTION
 7 TEE DRIVE
 PORTLAND, MAINE 04103

Architect
SHIELDS ARCHITECTURE
 CUMBERLAND, MAINE
 (207) 776-8926

Date: 6/19/15
 Project:
INTERIOR FIT-UP
 660 FOREST AVENUE
 PORTLAND, MAINE

Drawing
**DEMOLITION PLAN,
 DETAILS, SCHEDULES**