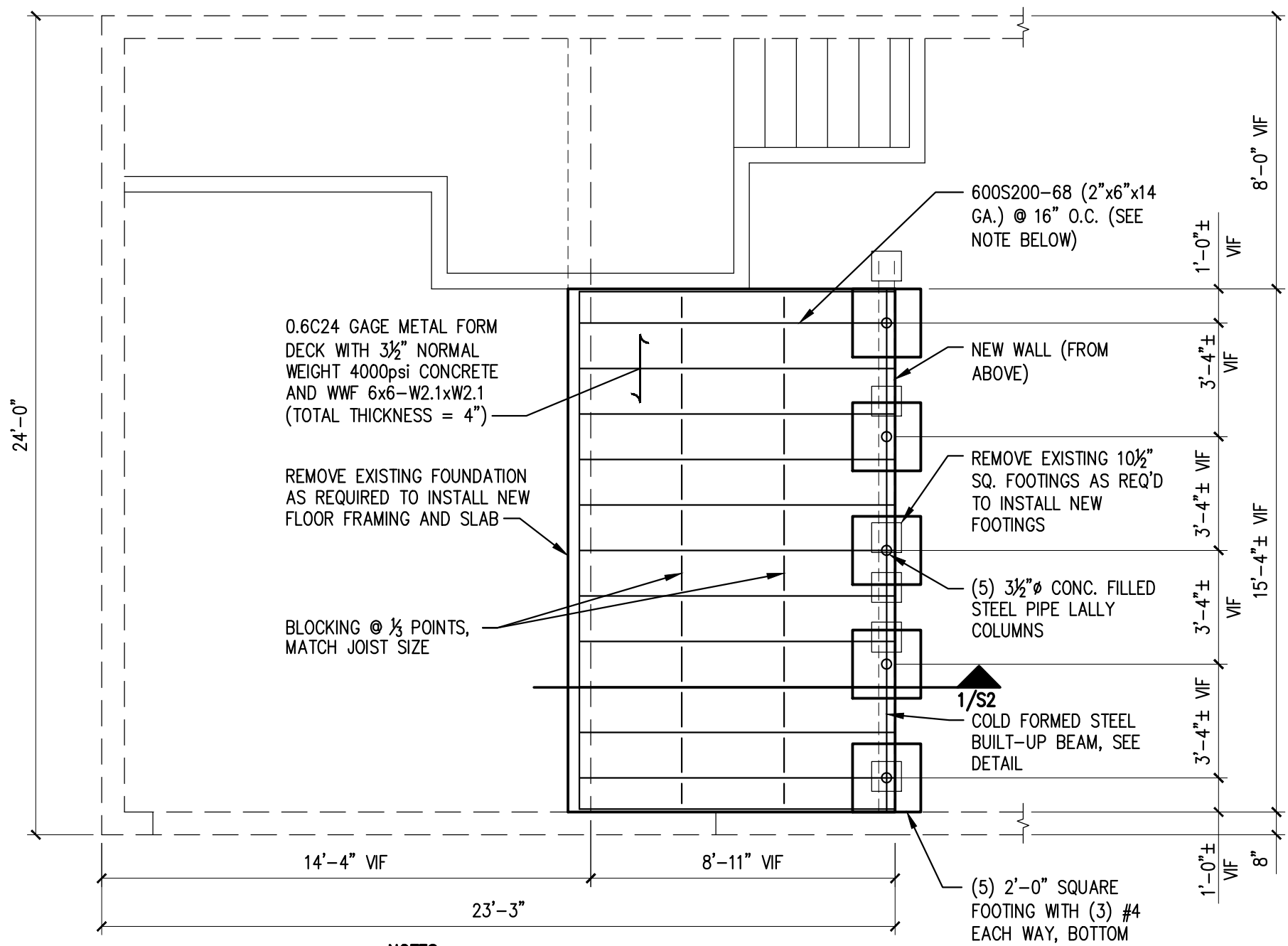


ISSUE		DESCRIPTION
No.	DATE	DESCRIPTION
0	6-13-14	ISSUED FOR CONSTRUCTION
1	4-30-15	REVISED FRAMING

SHEET TITLE:  
**GARAGE FLOOR FRAMING PLAN**

DESIGNED: PDR  
DRAWN: PDR  
DATE: 06-13-14  
PROJECT No: 14-067 A

**S1**



0.6C24 GAGE METAL FORM DECK WITH 3 1/2" NORMAL WEIGHT 4000psi CONCRETE AND WWF 6x6-W2.1xW2.1 (TOTAL THICKNESS = 4")

REMOVE EXISTING FOUNDATION AS REQUIRED TO INSTALL NEW FLOOR FRAMING AND SLAB

BLOCKING @ 1/3 POINTS, MATCH JOIST SIZE

600S200-68 (2"x6"x14 GA.) @ 16" O.C. (SEE NOTE BELOW)

NEW WALL (FROM ABOVE)

REMOVE EXISTING 10 1/2" SQ. FOOTINGS AS REQ'D TO INSTALL NEW FOOTINGS

(5) 3 1/2" Ø CONC. FILLED STEEL PIPE LALLY COLUMNS

1/S2 COLD FORMED STEEL BUILT-UP BEAM, SEE DETAIL

(5) 2'-0" SQUARE FOOTING WITH (3) #4 EACH WAY, BOTTOM

**NOTES:**

1. AT CONTRACTOR'S OPTION, SUBSTITUTE 800S200-43 (2"x8"x18 GAGE) @ 16" FOR JOISTS SHOWN ON PLAN.
2. AT CONTRACTOR'S OPTION, SUBSTITUTE 2'-0" WIDE x 1'-0" THICK x CONTINUOUS STRIP FOOTING WITH (3) #4 LONG BARS AND #4 @ 12" O.C., SHORT BARS FOR INDIVIDUAL SPREAD FOOTINGS.
3. AT CONTRACTOR'S OPTION, MOVE LIGHT GAGE BEAM LINE, LALLY COLUMNS AND FOOTINGS TO ALLOW FRAMED WALL TO BE BUILT OFF FLOOR SLAB ON GRADE.