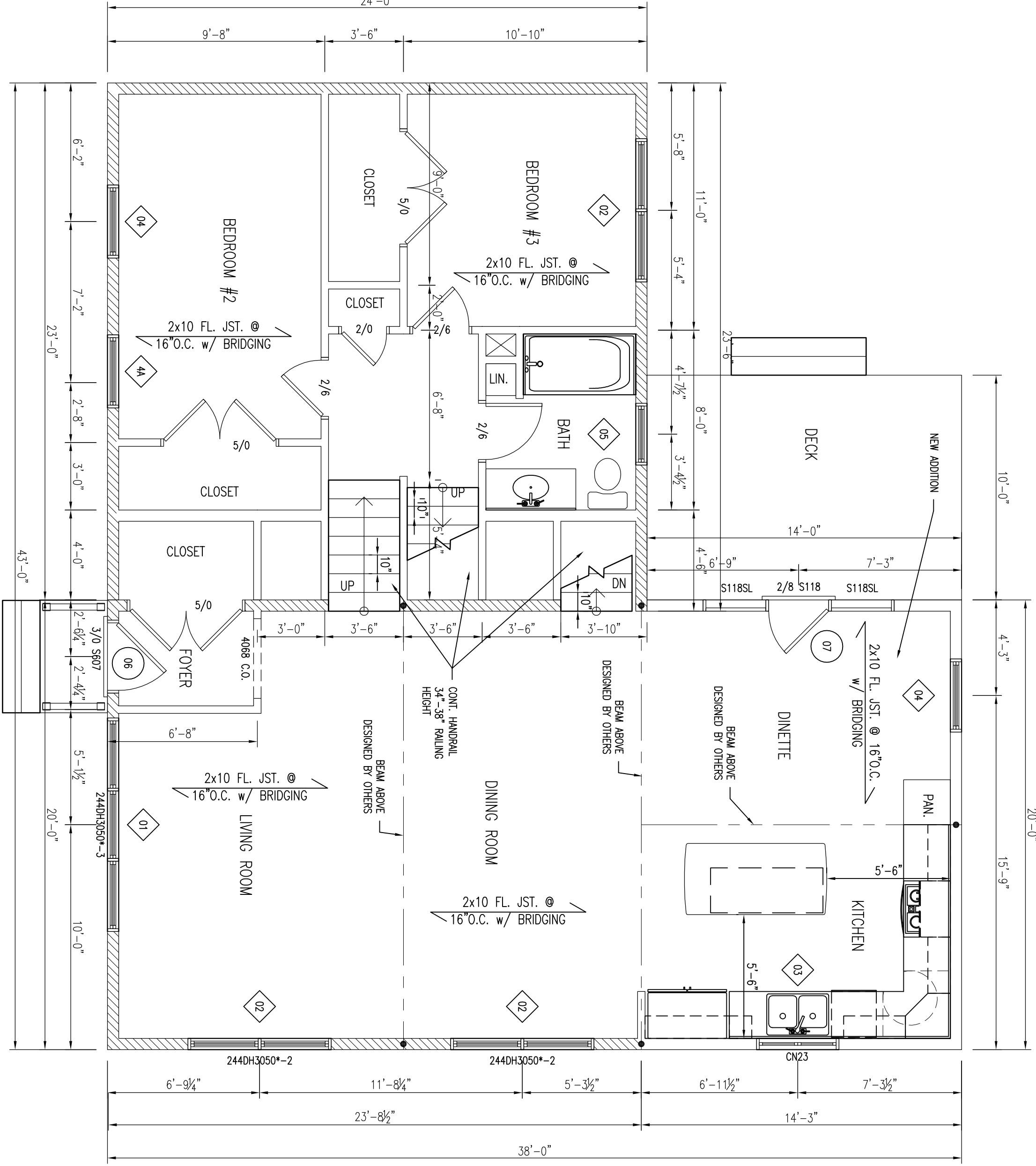
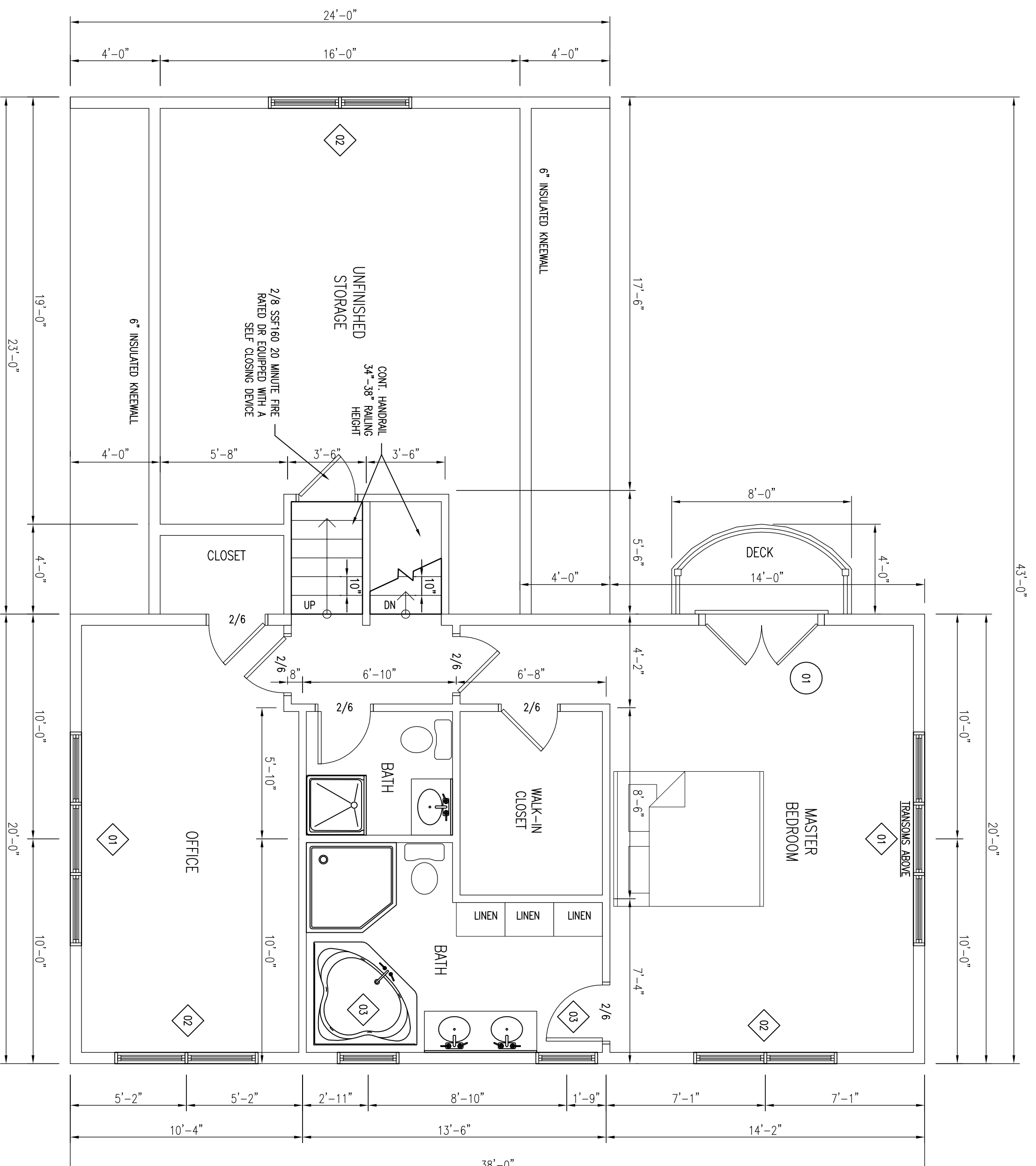
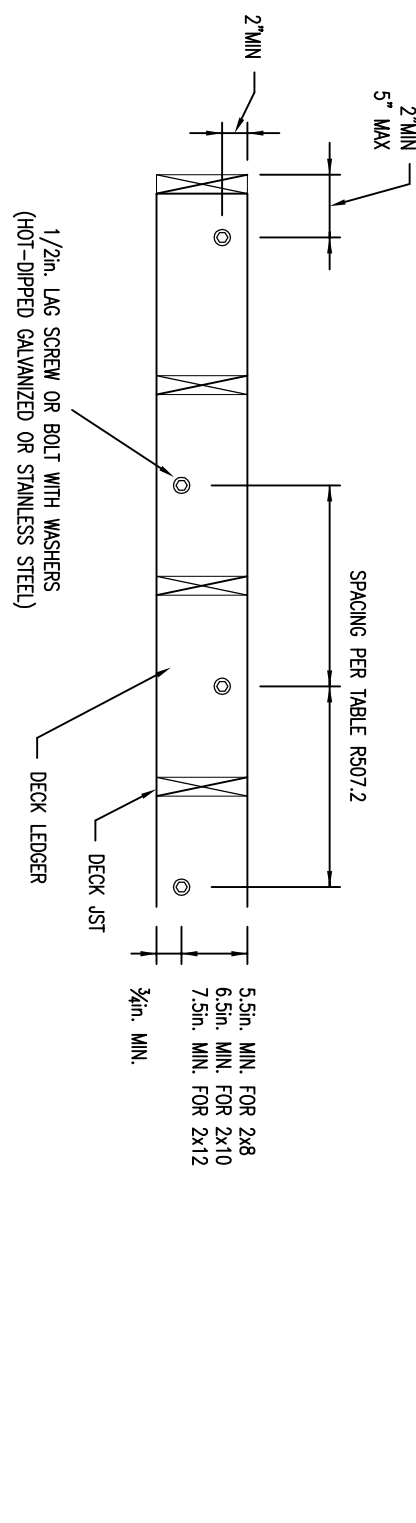
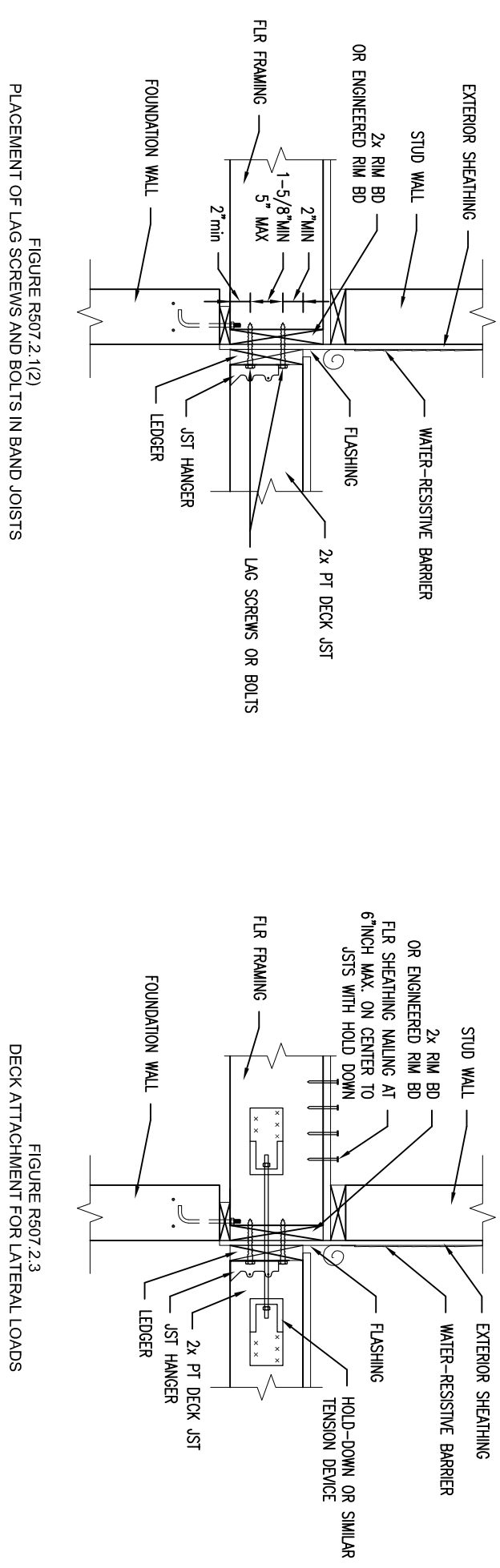


FASTENERS REQUIRED FOR SOLID BRIM, PINE OR LAMINAR, HEAVY GUSSET AND 2X8CH NOMINAL SOLID SWAN SPRUCE-PINE-FIR BAND JOIST (CHECK LIVE LOAD=40PSF, DECKLOAD=100PSF)

JOIST SPACING	6'-0"	6'-1"	6'-2"	6'-3"	6'-4"	6'-5"	6'-6"
MINIMUM FASTENERS PER JOIST	30	23	18	15	13	11	10
MINIMUM FASTENERS PER JOIST (MAXIMUM SPACING)	36	36	34	29	24	21	19
MINIMUM FASTENERS PER JOIST (MAXIMUM SPACING & MAXIMUM SPACING)	36	36	29	24	21	18	16

(REF: TABLE R407.2)



SECOND FLOOR WINDOWS & DOOR SCHEDULE

DOOR #	SIZE	LABEL	HEADER	NOTES
01	6'-2 1/2" x 6'-2 1/2"	FRONT DOOR	2x4-1x12-1/4"	MINIMUM 300 LBS
02	6'-2 1/2" x 6'-2 1/2"	FRONT DOOR	2x4-1x12-1/4"	MINIMUM 300 LBS
03	2'-2 1/2" x 6'-2 1/2"	FRONT DOOR	2x4-1x12-1/4"	MINIMUM 300 LBS
04	6'-2 1/2" x 6'-2 1/2"	FRONT DOOR	2x4-1x12-1/4"	MINIMUM 300 LBS
05	6'-2 1/2" x 6'-2 1/2"	FRONT DOOR	2x4-1x12-1/4"	MINIMUM 300 LBS

ANDERSEN WINDOW NRC CERTIFIED UNIT PERFORMANCE

PRODUCT TYPE	U-FAC	R-FAC	SHGC	HT LOSS-E, W/INT
ANDERSEN WINDOWS	0.25	0.25	0.25	0.25
CASSETT/WINING	0.25	0.25	0.25	0.25
200 SERIES DOUBLE-HANG	0.25	0.25	0.25	0.25
400 SERIES DOUBLE-HANG	0.25	0.25	0.25	0.25
TILT-WASH THRESHOLD	0.25	0.25	0.25	0.25
GLIDER	0.25	0.25	0.25	0.25

NOTE:  
 1. EACH SLEEPING AREA SHALL BE INSTALLED IN THE FOLLOWING LOCATIONS:  
 2. EACH SLEEPING AREA SHALL BE INSTALLED IN THE IMMEDIATE VICINITY OF THE BEDROOM.  
 3. ON EACH ADDITIONAL STORY OF THE BUILDING.  
 4. ALL SMOKE ALARMS SHALL BE INTERCONNECTED.  
 5. FIRE SEPARATION PER TOWN OR LOCAL CODES WHEN REQUIRED.  
 \* EGRESS WINDOW

CONSTRUCTION NOTE:  
 CONTRACTOR TO VERIFY GRADE, STRUCTURAL INTEGRITY OF EXISTING STRUCTURE AND ALL DIMENSIONS IN FIELD BEFORE STARTING NEW CONSTRUCTION. DESIGN SHOWN MAY DIFFER FROM ACTUAL FINISHED CONSTRUCTION. FINAL MATERIALS, WINDOW/DOOR LOCATIONS AND SIZES, TO BE DETERMINED PER OWNER/CONTRACTOR LOCAL CODES.

FIRST FLOOR WINDOWS & DOOR SCHEDULE

DOOR #	SIZE	LABEL	HEADER	NOTES
01	6'-2 1/2" x 6'-2 1/2"	FRONT DOOR	2x4-1x12-1/4"	MINIMUM 300 LBS
02	6'-2 1/2" x 6'-2 1/2"	FRONT DOOR	2x4-1x12-1/4"	MINIMUM 300 LBS
03	2'-2 1/2" x 6'-2 1/2"	FRONT DOOR	2x4-1x12-1/4"	MINIMUM 300 LBS
04	6'-2 1/2" x 6'-2 1/2"	FRONT DOOR	2x4-1x12-1/4"	MINIMUM 300 LBS
05	6'-2 1/2" x 6'-2 1/2"	FRONT DOOR	2x4-1x12-1/4"	MINIMUM 300 LBS

ANDERSEN WINDOW NRC CERTIFIED UNIT PERFORMANCE

PRODUCT TYPE	U-FAC	R-FAC	SHGC	HT LOSS-E, W/INT
ANDERSEN WINDOWS	0.25	0.25	0.25	0.25
CASSETT/WINING	0.25	0.25	0.25	0.25
200 SERIES DOUBLE-HANG	0.25	0.25	0.25	0.25
400 SERIES DOUBLE-HANG	0.25	0.25	0.25	0.25
TILT-WASH THRESHOLD	0.25	0.25	0.25	0.25
GLIDER	0.25	0.25	0.25	0.25

NOTE:  
 SMOKE ALARMS SHALL BE INSTALLED IN THE FOLLOWING LOCATIONS:  
 1. EACH SLEEPING AREA  
 2. OUTSIDE EACH SEPARATE SLEEPING AREA  
 3. IN THE IMMEDIATE VICINITY OF THE BEDROOM.  
 4. ON EACH ADDITIONAL STORY OF THE BUILDING.  
 5. ALL SMOKE ALARMS SHALL BE INTERCONNECTED.  
 6. FIRE SEPARATION PER TOWN OR LOCAL CODES WHEN REQUIRED.  
 \* EGRESS WINDOW

CONSTRUCTION NOTE:  
 CONTRACTOR TO VERIFY GRADE, STRUCTURAL INTEGRITY OF EXISTING STRUCTURE AND ALL DIMENSIONS IN FIELD BEFORE STARTING NEW CONSTRUCTION. DESIGN SHOWN MAY DIFFER FROM ACTUAL FINISHED CONSTRUCTION. FINAL MATERIALS, WINDOW/DOOR LOCATIONS AND SIZES, TO BE DETERMINED PER OWNER/CONTRACTOR LOCAL CODES.



## Proposed 1st & 2nd Floor Plans Portland Remodel Portland, ME

DRAWINGS ARE PROVIDED BY SOUTHERN MAINE DRAFTING & DESIGN AS A SERVICE TO HIS CUSTOMERS AND ARE INTENDED FOR INFORMATIONAL AND ILLUSTRATIVE PURPOSES ONLY. THE INFORMATION PRESENTED IN THESE DRAWINGS ARE NOT PREPARED OR REVIEWED BY A LICENSED OR REGISTERED ARCHITECT AND SHOULD NOT BE USED AS A BASIS FOR CONSTRUCTION. SOUTHERN MAINE DRAFTING & DESIGN SUGGESTS THAT HIS CUSTOMERS SEEK THE SERVICES OF A LICENSED OR REGISTERED ARCHITECT TO OBTAIN TECHNICAL BLUE PRINTS IF THE CUSTOMER DESIRES TO PROCEED FURTHER. THESE DRAWINGS ARE NOT TO BE USED AS A BASIS FOR CONSTRUCTION AND SOUTHERN MAINE DRAFTING & DESIGN DISCLAIMS ANY RESPONSIBILITY IF THEY ARE SO USED.

REVISIONS:

NO.	DATE	REVISION
01	08/20/14	ISSUED PERMS
02	08/20/14	REVISIONS

Date : 08/20/14  
 Scale : 1/4"=1'-0"  
 Drawn By: JTM  
 Project: A041014  
 Sheet Number:  
 4 of 5