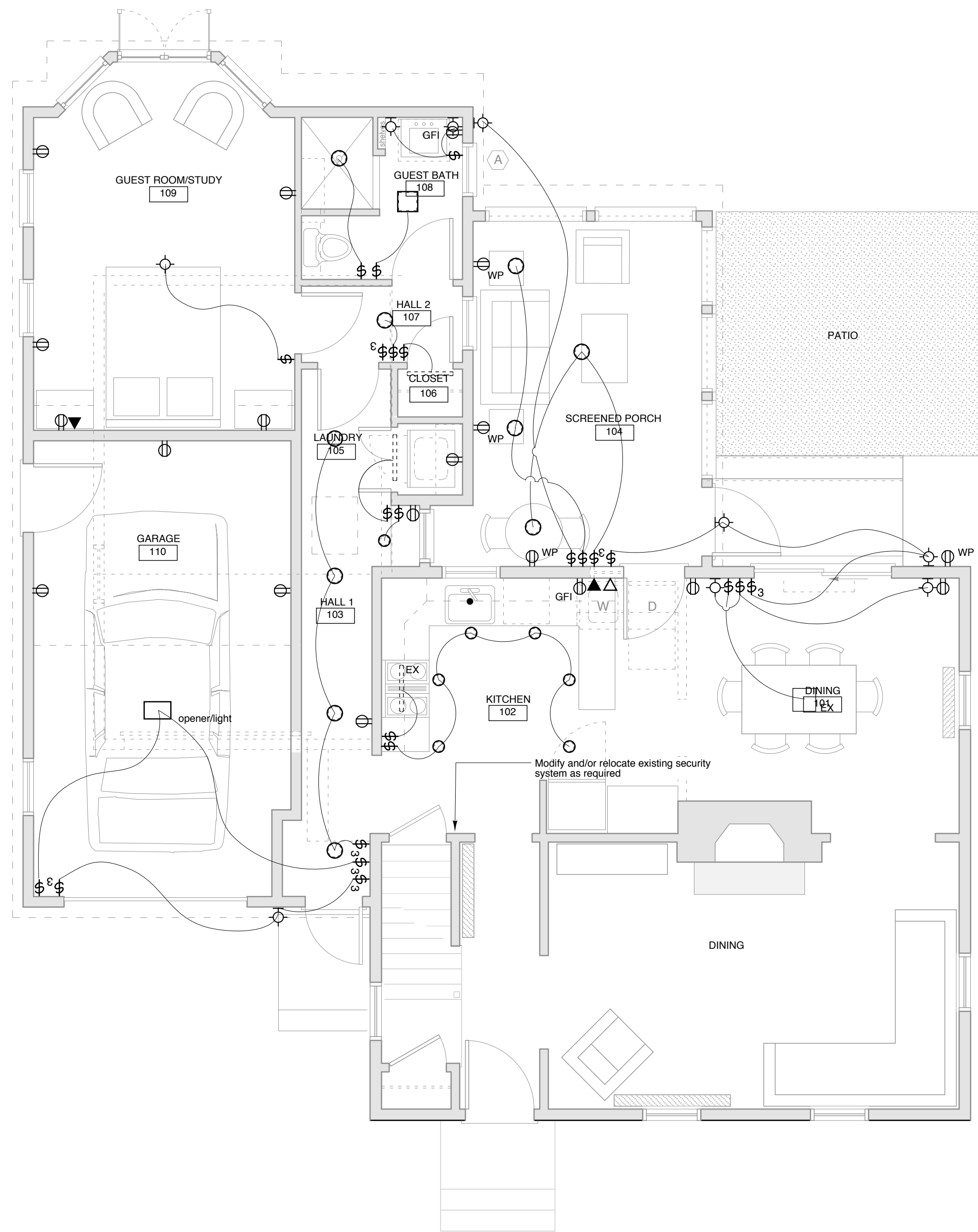


ELECTRICAL SYMBOLS			
MARK	DESCRIPTION	MARK	DESCRIPTION
	Fluorescent Ceiling Fixture		Ceiling Mounted Exhaust Fan/Light
	Undercabinet Fixture		Wall Mounted Exhaust Fan
	Surface/Ceiling Mounted Fixture		Data/Cable TV Jack
	Wall Mounted Fixture		Telephone Jack
	Surface Mounted Ceiling Fixture		Doorbell Push Button
	Recesses Walkway / Stairway Fixture		Doorbell Bell
	Recessed Downlight Fixture		Thermostat
	Garage Door Opener/Light		Motor
	Duplex Outlet		Ceiling Mounted Smoke Detector
	Floor Outlet (flush with floor)		In-wall or In-ceiling Stereo Speaker
	Duplex Outlet - Switched		Ground Fault Interrupter
	Special Outlet or Connection		Weatherproof
	Switch		Existing Fixture, New wiring Required
	Switch - Three Way		Timeclock Controlled
	Switch - Dimmer		

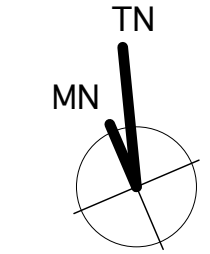


KEY
DEMOLITION - - - - -

1 Electrical Plan
SCALE: 1/4" = 1'-0"

EXISTING FOOTPRINT: 900 SF
NEW FOOTPRINT: 1440 SF

NOTES
1. This drawing is provided for information only and to show owner's design intent. All electrical design and engineering is by the design build electrical contractor.



ISSUED FOR PERMIT
04/03/06

Richard Renner Architects
61 Pleasant Street
Suite 105
Portland, Maine 04101
207.775.9699
207.775.9699 fax

Consultants:

**Levine Residence
Addition and Renovation**
84 Hersey Street
PORTLAND, MAINE

Electrical Plan
Drawn by: NL
Scale: 1/4" = 1'-0"
Date: 04/03/06
File Name: 2005-10/E1.1
Project No. FRA2005-10.00
Revised:

E1.1