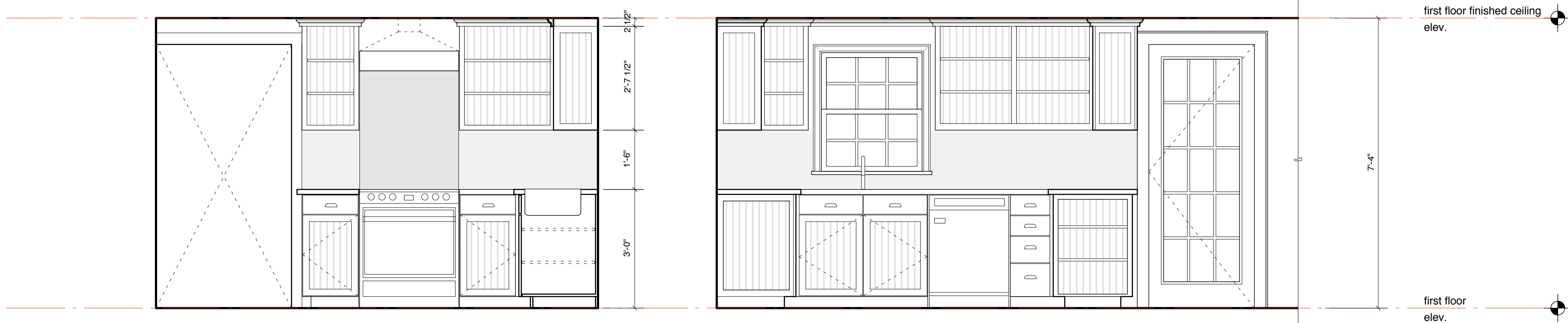




7B West Elevation-Option B-Showing knee wall behind cabinets
SCALE: 1/2" = 1'-0"

6B North Elevation-Option B-Showing knee wall behind cabinets
SCALE: 1/2" = 1'-0"



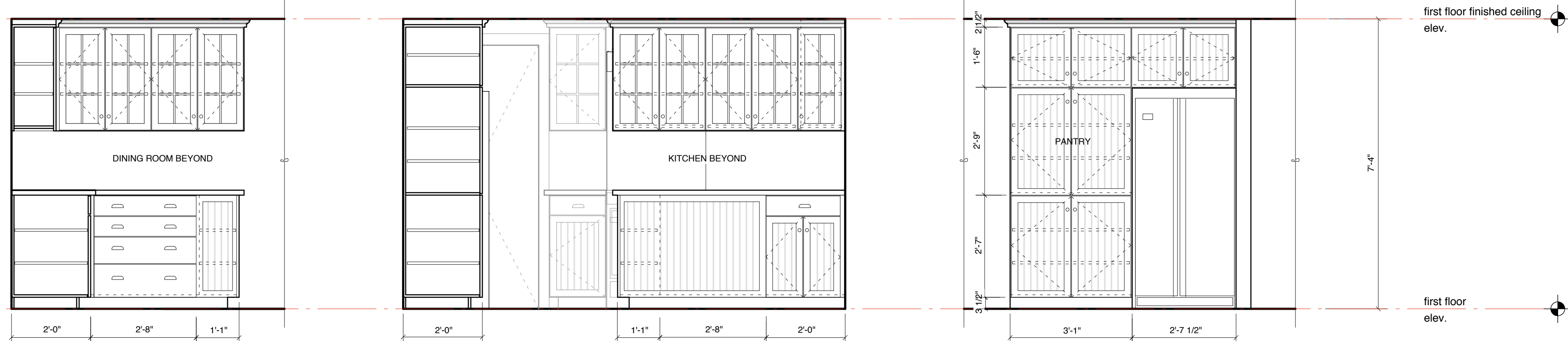
7A North Elevation-Option A-no demolition of existing exterior west wall
SCALE: 1/2" = 1'-0"
OPEN SHELVING AT UPPER CABINETS, BEADBOARD BEHIND

6A North Elevation-Option A-no demolition of existing exterior west wall
SCALE: 1/2" = 1'-0"
OPEN SHELVING AT UPPER CABINETS, BEADBOARD BEHIND



7A North Elevation-Option A-no demolition of existing exterior west wall
SCALE: 1/2" = 1'-0"
GLASS DOORS ON UPPER CABINETS

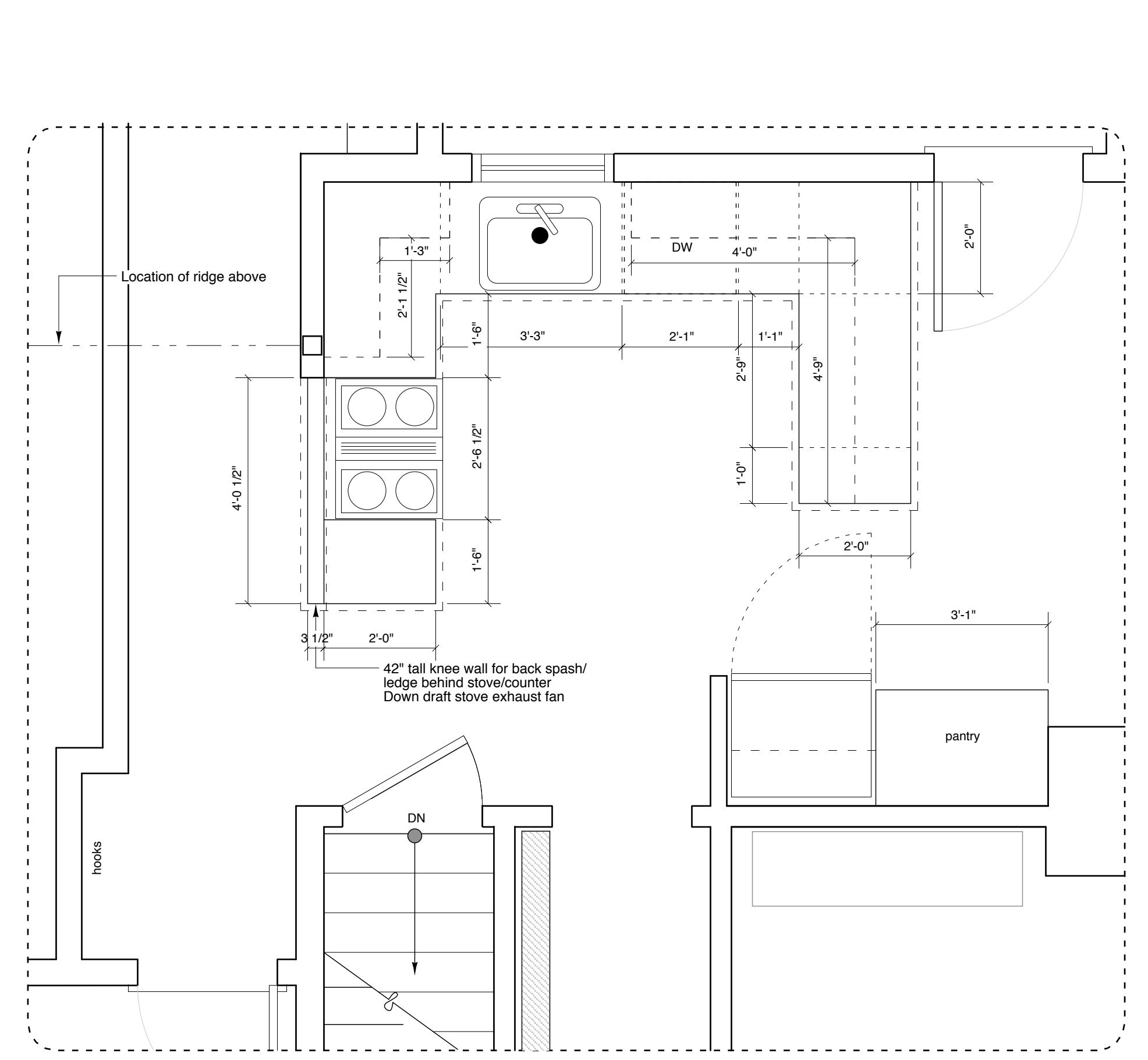
6A North Elevation-Option A-no demolition of existing exterior west wall
SCALE: 1/2" = 1'-0"
GLASS DOORS ON UPPER CABINETS



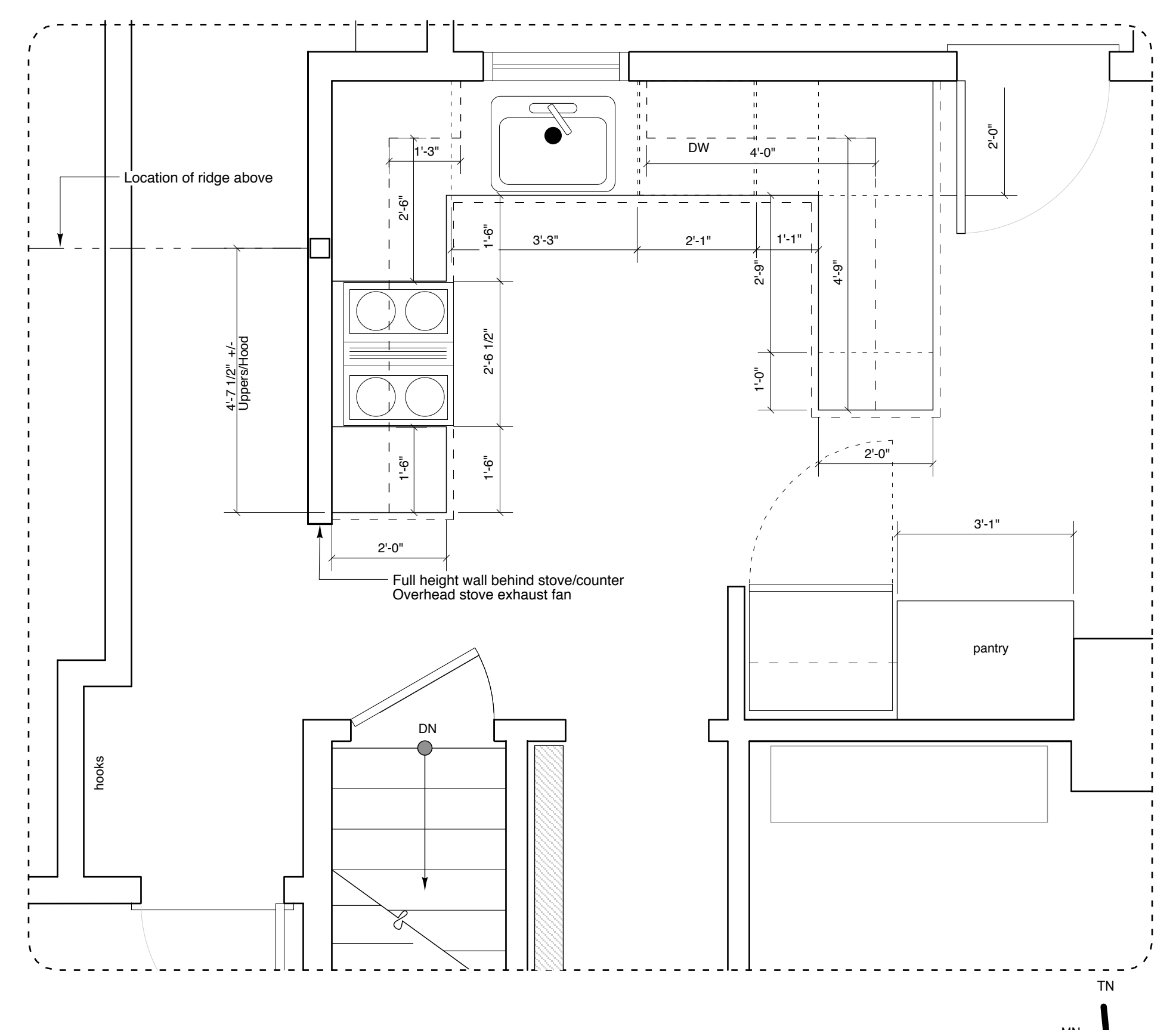
5 East Elevation-Both Options
SCALE: 1/2" = 1'-0"

4 West Elevation-Both Options-background for Option A
SCALE: 1/2" = 1'-0"

3 South Elevation-Both Options
SCALE: 1/2" = 1'-0"



2 Partial Floor Plan-Option B-part of wall between kitchen and hall removed
SCALE: 1/2" = 1'-0"



1 Partial Floor Plan-Option A-existing wall between kitchen and hall as is
SCALE: 1/2" = 1'-0"

Richard Renner Architects
61 Pleasant Street
Suite 100
Portland, Maine 04101
207.775.9699
207.775.9699 fax

Consultants:

**Levine Residence
Addition and Renovation**
84 Hersey Street
PORTLAND, MAINE

Kitchen Cabinet Options
Drawn by: NL
File Name: 2005-10/Ax.x
Scale: 1/2" = 1'-0"
Date: 04/03/06
Project No. RRA2005-10.00
Revised:

A4.2