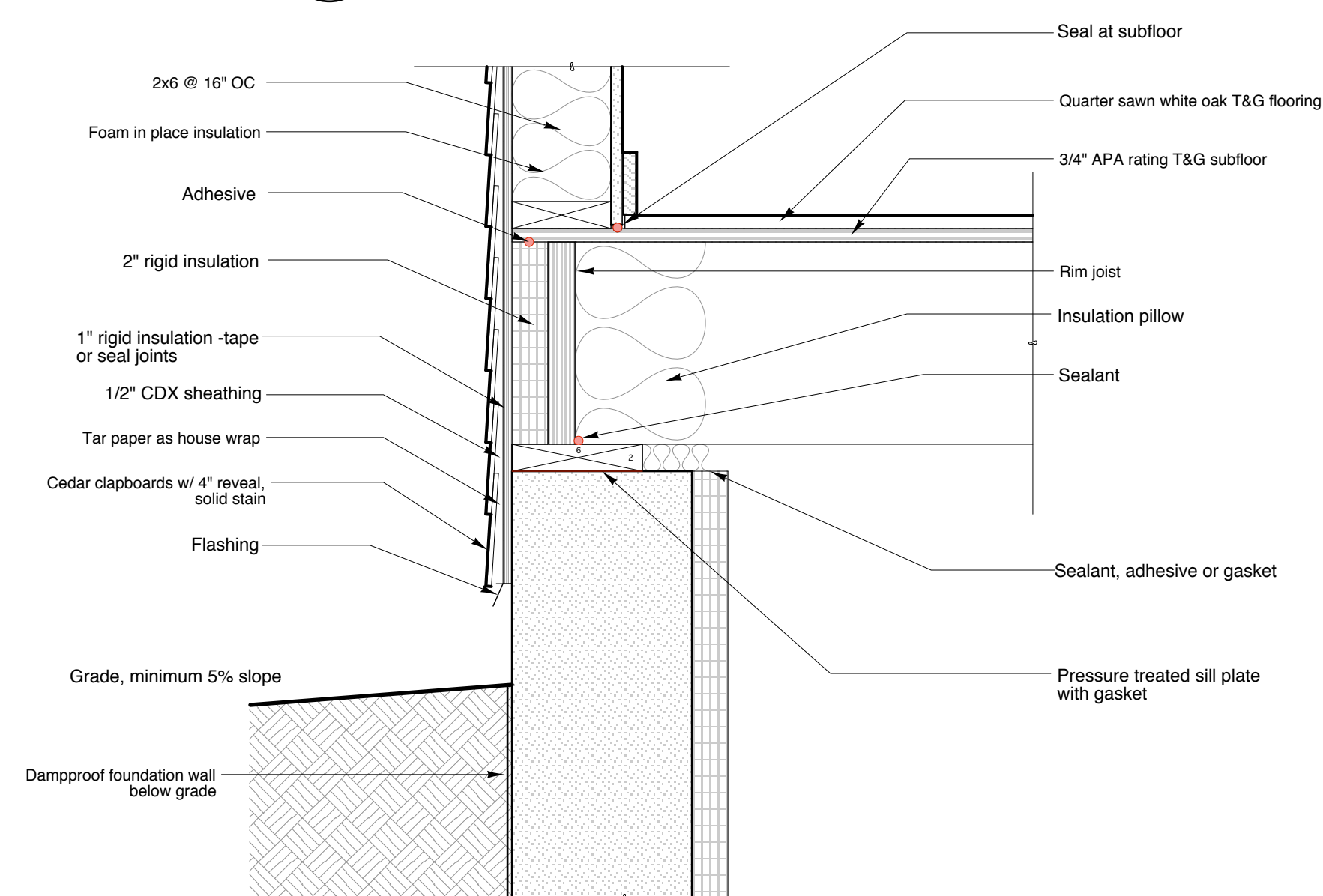
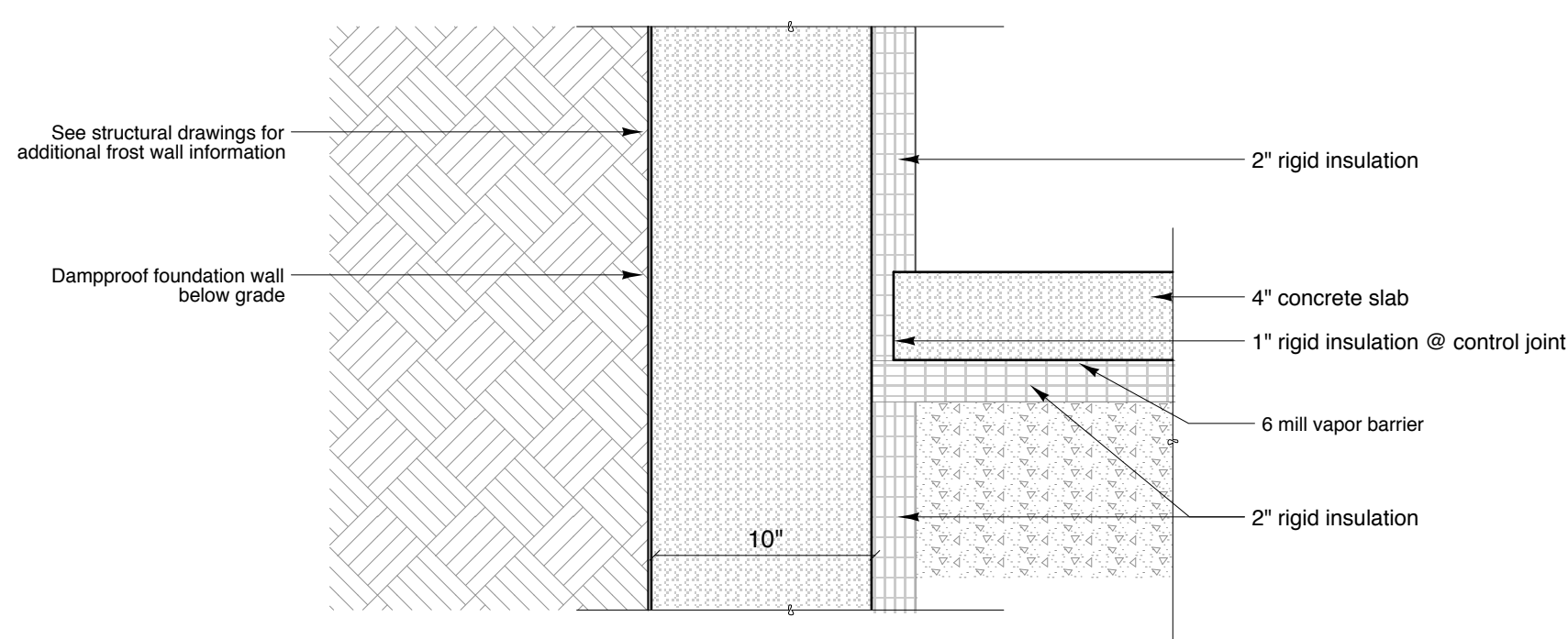


4 Detail at Eave
SCALE: 1 1/2" = 1'-0"



3 Detail at Top of Wall/Floor Framing
SCALE: 1 1/2" = 1'-0"



2 Detail at Crawl Space Slab
SCALE: 1 1/2" = 1'-0"

TYPICAL ASSEMBLY @ SHED ROOF

- Full adherede EPDM membrane roof or similar
- 5/8" sheathing
- 2x10 rafters (See Roof Framing Plan for spacing)
- Spray in place foam insulation (icynene)
- 1x strapping hard slope of rafters
- 1/2" GWB

TYPICAL WALL ASSEMBLY

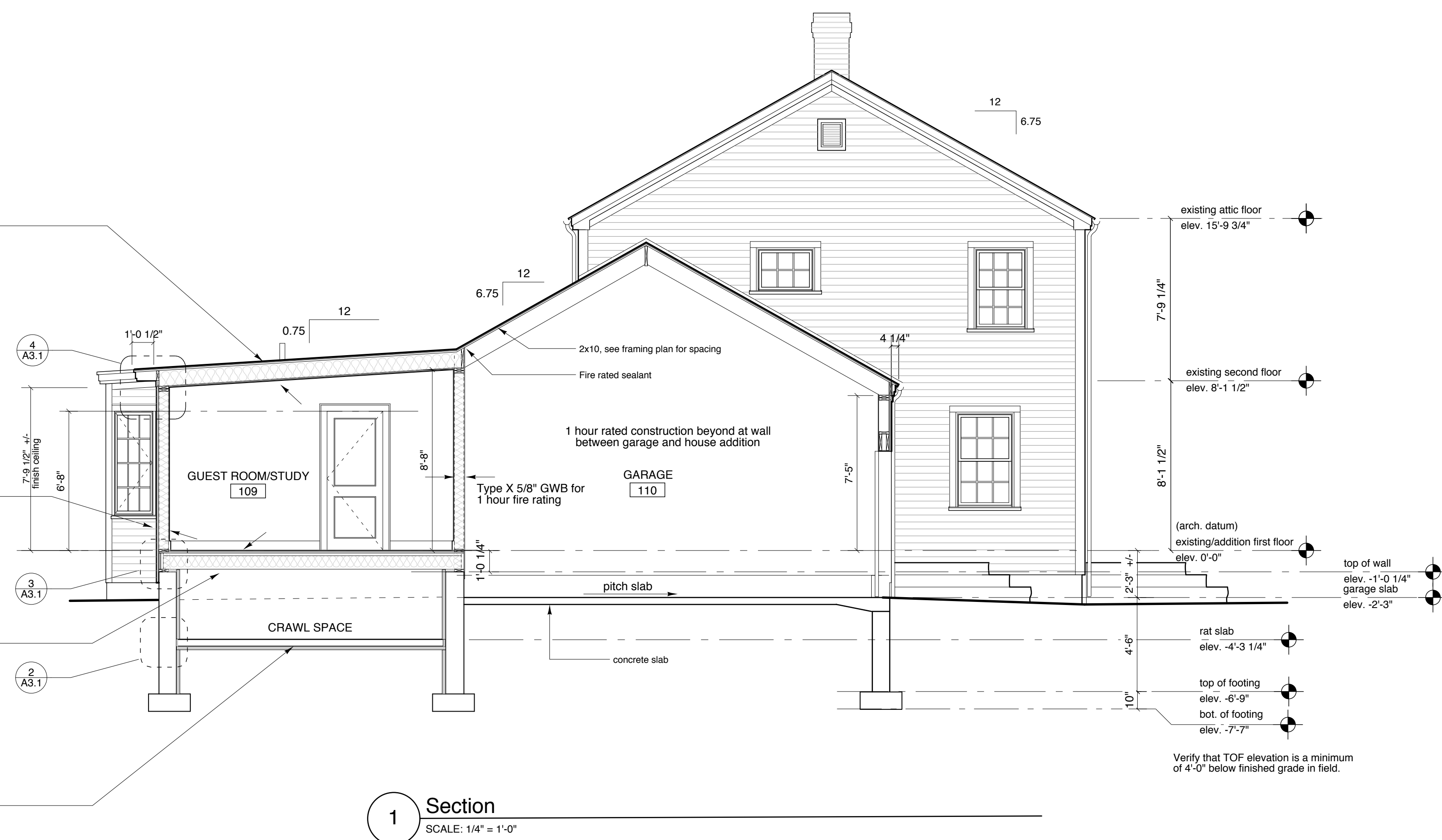
- white cedar clapboards, solid stain all six sides
- house slicker rainscreen material or vertical strapping, TBD
- tar paper over 1/2" CDX sheathing
- 2x6 stud wall @ 16" OC
- foam in place insulation
- vapor barrier if required
- 1/2" GWB, painted

TYPICAL FLOOR ASSEMBLY

- quarter sawn T&G white oak flooring
- 15 # felt or kraft paper
- 3/4" APA rated T&G sheathing
- 2x10 @ 16" OC floor joists
- insulation

TYPICAL SLAB-ON-GRADE ASSEMBLY

- 4" concrete slab
- vapor barrier
- 2" rigid insulation
- clean, well compacted fill



1 Section
SCALE: 1/4" = 1'-0"

Richard Renner Architects
61 Pleasant Street
Suite 105
Portland, Maine 04101
207.775.9699
207.775.9699 fax

Consultants:

Levine Residence Addition and Renovation
84 Hersey Street
PORTLAND, MAINE

Section and Details
Drawn by: NL
Scale: varies
Date: 04/03/06
File Name: 2005-10/A3.1
Project No. RRA2005-10.00
Revised:

ISSUED FOR PERMIT
04/03/06

A3.1