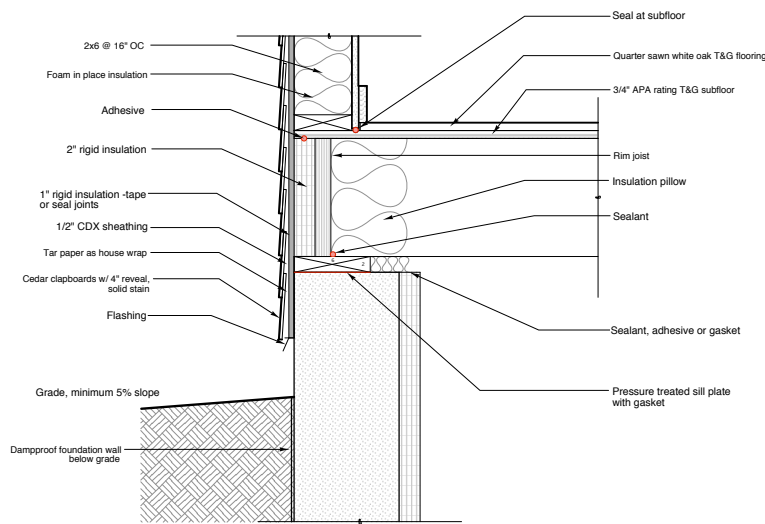
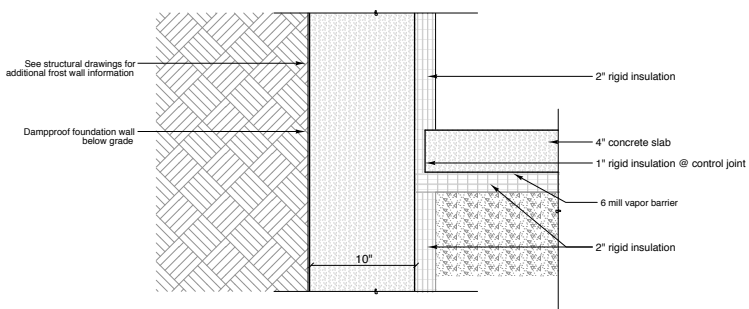


**4 Detail at Eave**  
SCALE: 1 1/2" = 1'-0"



**3 Detail at Top of Wall/Floor Framing**  
SCALE: 1 1/2" = 1'-0"



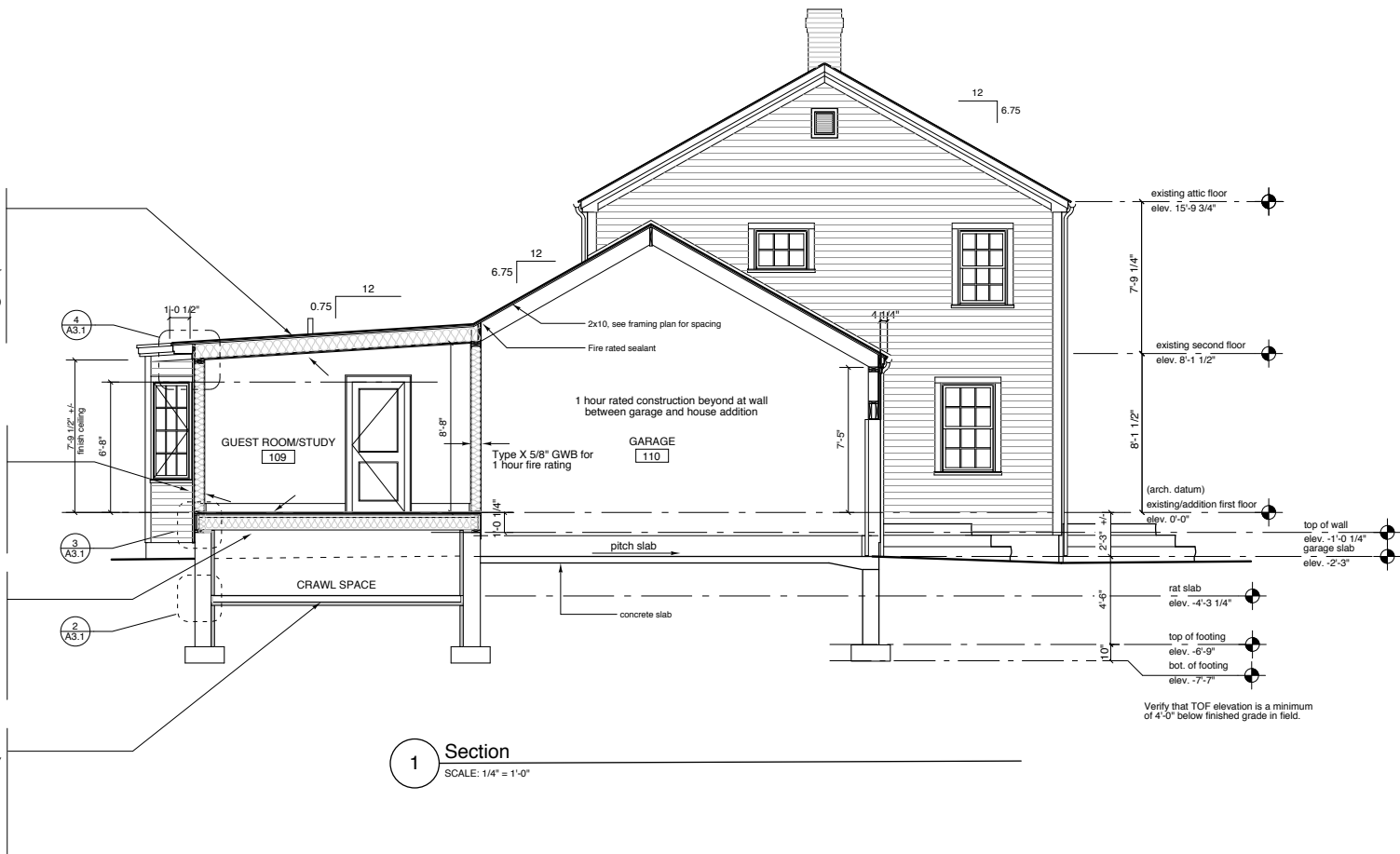
**2 Detail at Crawl Space Slab**  
SCALE: 1 1/2" = 1'-0"

**TYPICAL ASSEMBLY @ SHED ROOF**  
 -Full adhere EPDM membrane roof or similar  
 -5/8" sheathing  
 -2x10 rafters (See Roof Framing Plan for spacing)  
 -Spray in place foam insulation (icynene)  
 -1x strapping hard slope of rafters  
 -1/2" GWB

**TYPICAL WALL ASSEMBLY**  
 -white cedar clapboards, solid stain all six sides  
 -house slicker rainscreen material or vertical strapping, TBD  
 -tar paper over 1/2" CDX sheathing  
 -2x6 stud wall @ 16" OC  
 -foam in place insulation  
 -vapor barrier if required  
 -1/2" GWB, painted

**TYPICAL FLOOR ASSEMBLY**  
 -quarter sawn T&G white oak flooring  
 -15 # felt or kraft paper  
 -3/4" APA rated T&G sheathing  
 -2x10 @ 16" OC floor joists  
 -insulation

**TYPICAL SLAB-ON-GRADE ASSEMBLY**  
 -4" concrete slab  
 -vapor barrier  
 -2" rigid insulation  
 -clean, well compacted fill



**1 Section**  
SCALE: 1/4" = 1'-0"

**Richard Renner Architects**  
 61 Pleasant Street  
 Suite 105  
 Portland, Maine 04101  
 207.773.8698 fax

Consultants:

**Levine Residence Addition and Renovation**

84 Hersey Street  
 PORTLAND, MAINE

**Section and Details**

Drawn by: NL  
 Scale: varies  
 Date: 04/03/06  
 File Name: 2005-10/A3.1  
 Project No. RRA2005-10.00  
 Revised:

ISSUED FOR PERMIT  
 04/03/06

**A3.1**