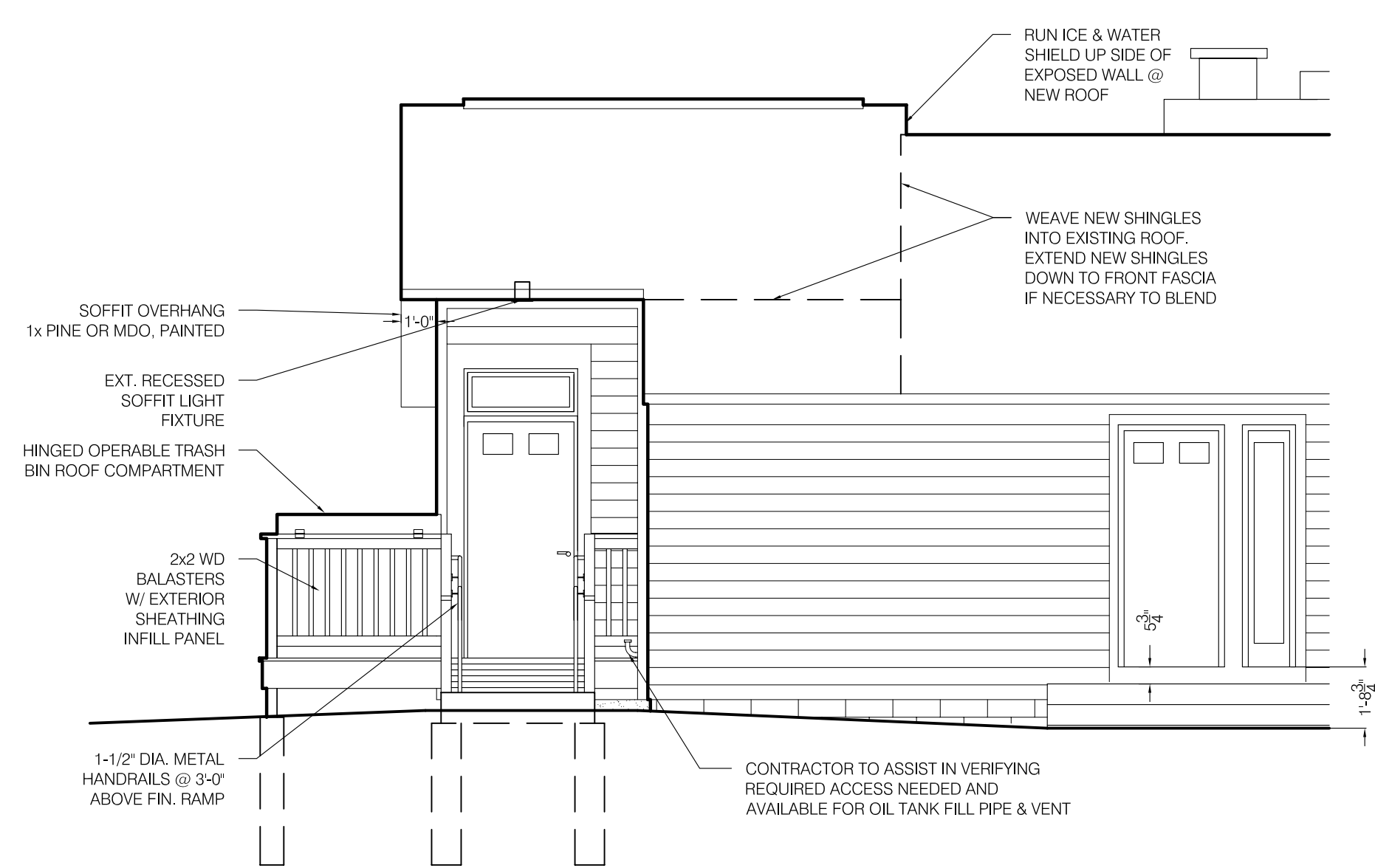
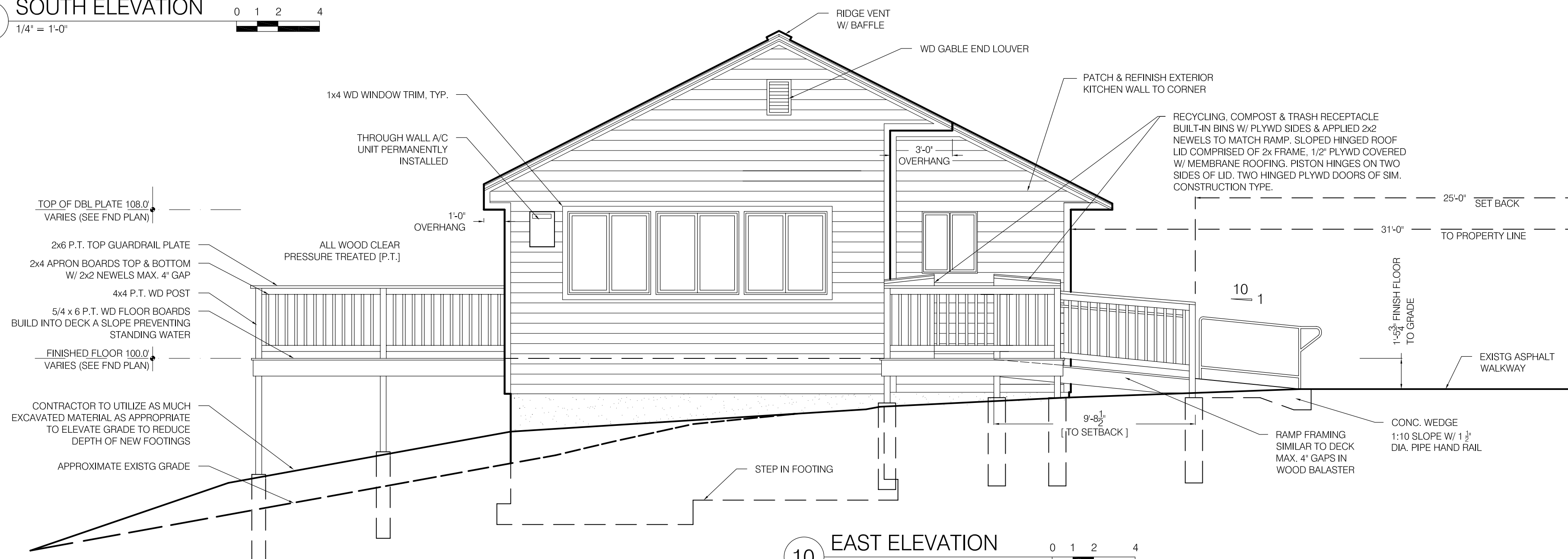


30 SOUTH ELEVATION
1/4" = 1'-0"



20 NORTH ELEVATION
1/4" = 1'-0"



10 EAST ELEVATION
1/4" = 1'-0"

ARCADIA

designworks LLC

199 prospect street, suite A
portland, maine 04103

tele: 207.347.5252
207.749.9306

ideate@arcadiadesignworks.com

ENGINEER:
ANDREW JACKSON, P.E.
JACKSON ENGINEERING
11 LUTHER STREET
PEAKS ISLAND, MAINE 04108
207-899-1960
JXNENGINEERING.COM



PROJECT:

MICHAELSON RESIDENCE

59 CODMAN STREET, PORTLAND, MAINE

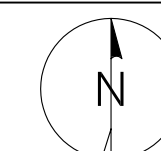
PHASE: PRICING

PRINTED: FEBRUARY 2014

FOR CONSTRUCTION

TITLE:

BUILDING ELEVATIONS



SHEET:

A-20

PN: 201402