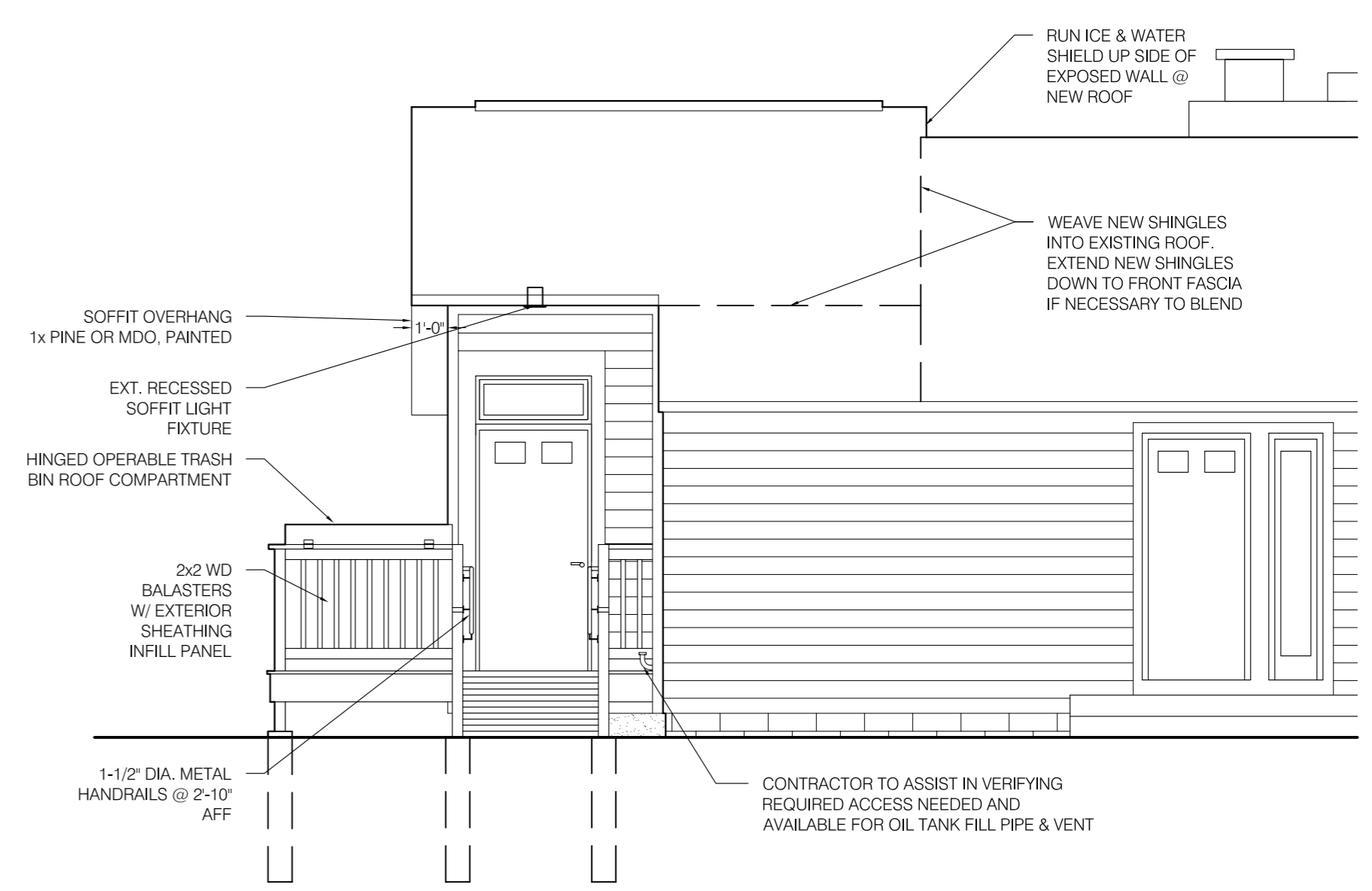
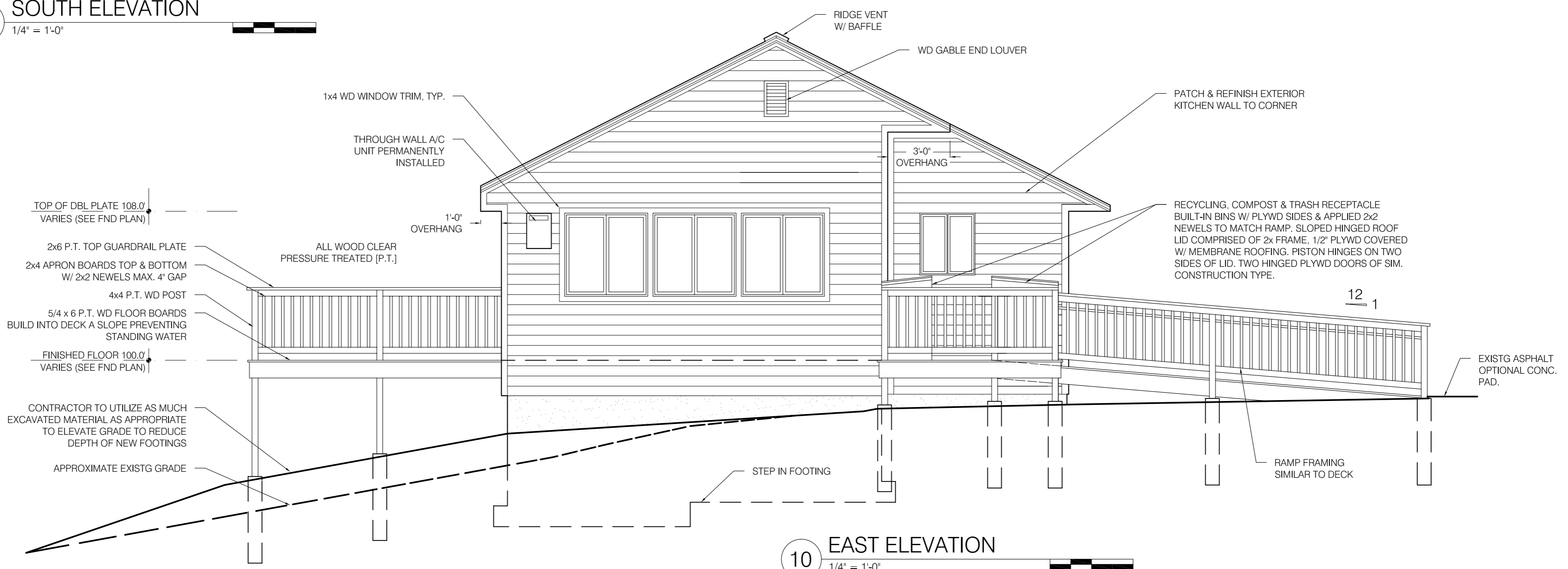


30 SOUTH ELEVATION
1/4" = 1'-0"



20 NORTH ELEVATION
1/4" = 1'-0"



10 EAST ELEVATION
1/4" = 1'-0"

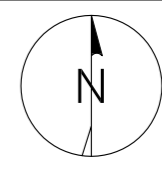
ARCADIA
designworks LLC
199 prospect street, suite A
portland, maine 04103
tele: 207.347.5252
207.749.9306
ideate@arcadiadesignworks.com

ENGINEER:
ANDREW JACKSON, P.E.
JACKSON ENGINEERING
11 LUTHER STREET
PEAKS ISLAND, MAINE 04108
207-899-1960
JXNENGINEERING.COM

PROJECT:
MICHAELSON RESIDENCE
59 CODMAN STREET, PORTLAND, MAINE

TITLE:
BUILDING ELEVATIONS

PHASE: PRICING
PRINTED: FEBRUARY 2014
FOR CONSTRUCTION



SHEET:
A-20
PN: 201402