



**Structural Framers's Pocket Guide**  
 Access with your Smartphone  
<http://www.ilevel.com/literature/IJ-9001.pdf>

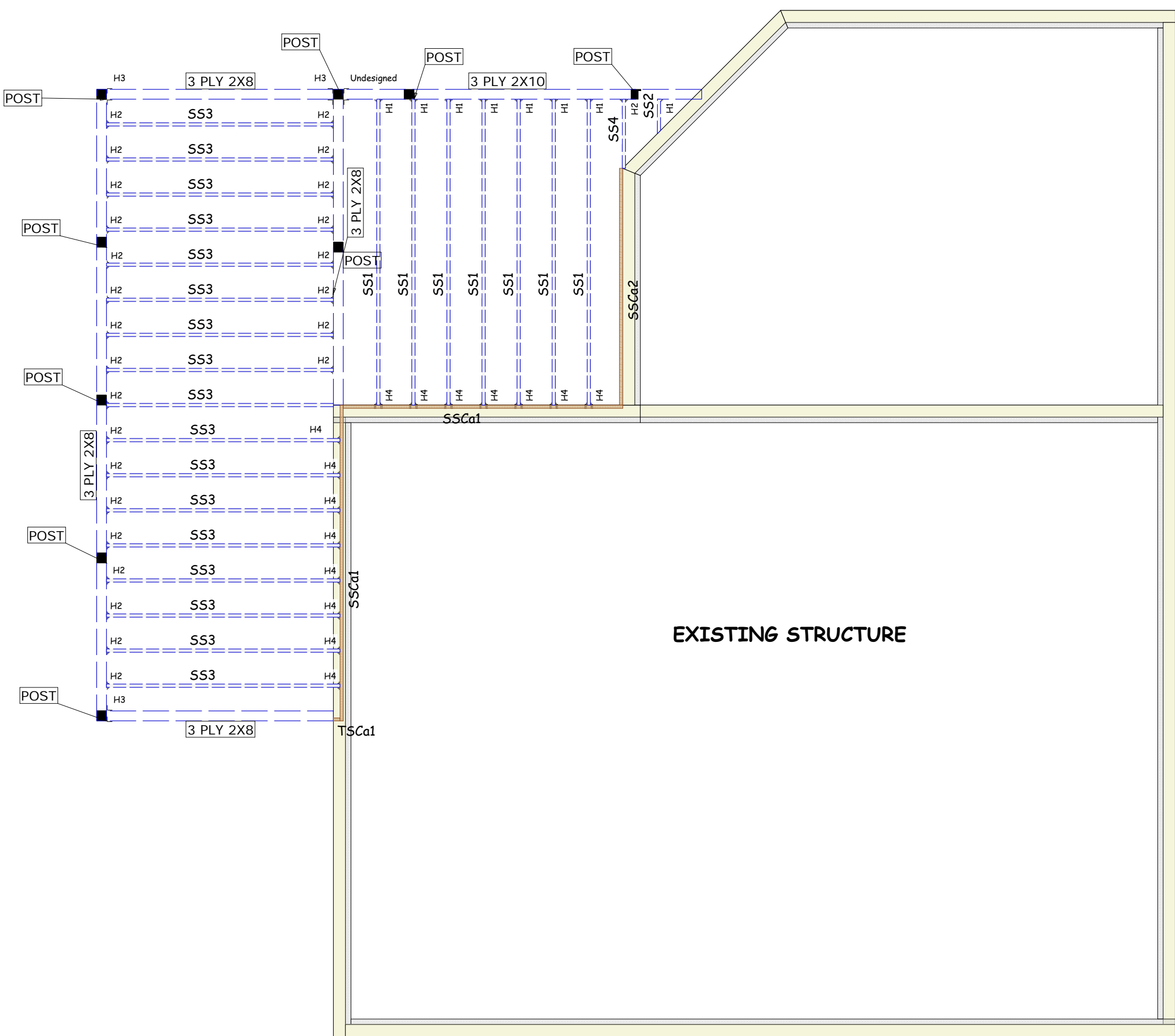
Weyerhaeuser

THINK SAFETY. READ INSTALLATION INFORMATION BEFORE PROCEEDING.  
 A COMPLETE ILEVEL™ LAYOUT INCLUDES THE ILEVEL™ FRAMER'S POCKET GUIDE.

<b>iLevel® Green Estimator</b>	
Contribution to National Green Bldg Std:	36
Contribution to LEED® for Homes:	1
<small>The points identified above indicate the potential number of green building points allowed by the ICC-700 2008 National Green Building Standard or the U.S. Green Building Council's LEED® for Homes based on the iLevel® structural frame solutions represented on this project. You are advised to confirm point calculations with the appropriate authorized organization. Contact iLevel Technical Services for recommendations on achieving additional green points.</small>	

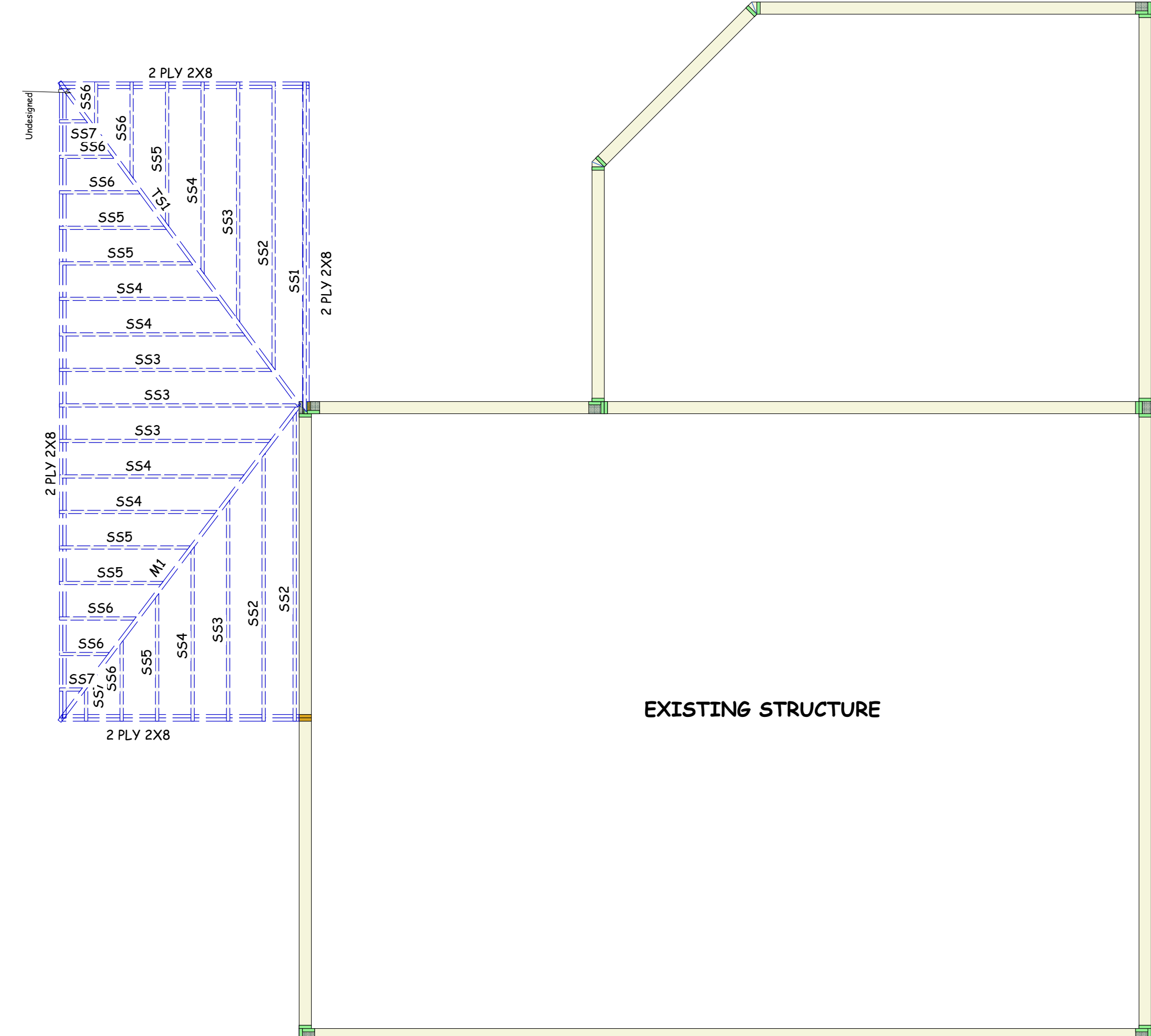


ALL FLOOR AND DECK FRAMING LUMBER TO BE PRESSURE TREATED.  
 ALL MOUNTING HARDWARE FOR FLOOR & DECK TO BE ZMAX COATED.  
 ALL POSTS TO BE 6X6 PT ON CONCRETE PIER AND 24" PAD.

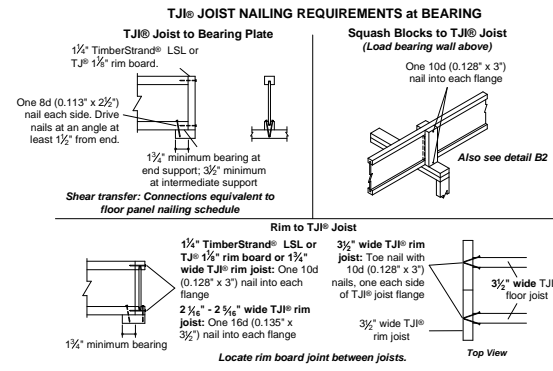
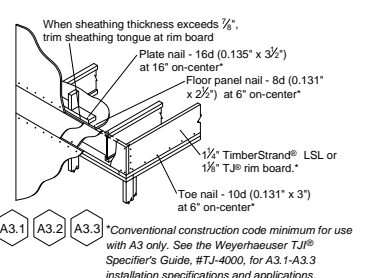


**SCREEN PORCH FLOOR & DECK**

ALL POSTS TO BE 4X4 SYP #2 PT  
 ALL COMMON RAFTERS TO BE 2X10  
 HIP RAFTERS TO BE 1 3/4" X 11 7/8" LVL



**SCREEN PORCH ROOF**



**WARNING**

Joists are unstable until braced laterally.  
 Bracing includes:  
 • Blocking • Sheathing • Stud Lines  
 • Hangers • Rim Board • Strips

DO NOT walk on joists until braced. INJURY MAY RESULT.

DO NOT walk on joists that are lying flat.

DO NOT stack building materials on unbraced joists. Stack only over beams or walls.

**WARNING NOTES:**  
 Lack of proper bracing during construction can result in serious accidents. Observe the following guidelines:  
 1. All blocking, hangers, rim boards and rim joists at the end supports of the T-Joist must be completely installed and properly nailed.  
 2. Lumber length, the braced end wall on an existing deck, must be established at the ends of the bay. This can also be accomplished by a temporary or permanent deck (sheathing) fastened to the first 4 feet of joist at the end of the bay.  
 3. Safety bracing of laid joists must be nailed to braced end wall or sheathed area (see notes 2) and for each joist. Without this bracing, backing sideways or rollover is highly probable under light construction loads - such as a worker or one of completed sheathing.  
 4. Sheathing must be completely attached to each T-Joist before additional loads can be placed on the system.  
 5. Ends of cantilevers require safety bracing on both the top and bottom flanges.  
 6. The flanges must remain straight within 1/2" from true alignment.  
 ▲ Weyerhaeuser, iLevel®, Micromat®, Parallam®, Glens® Floors®, TimberStrand®, T-Joist®, T-Joist® and Trus-Joist® are registered trademarks of Weyerhaeuser NR. © 2012 Weyerhaeuser NR Company. All rights reserved.

Framing Connector Summary												
PlotID	Qty	Manuf	Product	Design Method	Face Nails	Top Nails	Member Nails	Skew	Slope	Backer Blks	Filler	Web Stiff
H1	8	Simpson	LUS210	Geometry Only	8- 10d common	-	4- 10d common	-	-	No	No	No
H2	26	Simpson	LUS26	Geometry Only	4- 10d common	-	4- 10d common	-	-	No	No	No
H3	3	User	HUC26-3	User Defined	-	-	-	-	-	Not Required	Not Required	Not Required
H4	15	User	LUS26	User Defined	-	-	-	-	-	Not Required	Not Required	Not Required

Products				
PlotID	Length	Product	Plies	Net Qty
TSCa1	16' 0"	1 1/4" x 9 1/2" 1.3E TimberStrand® LSL	1	1
SS1	12' 0"	2 x 10 SPF No.1/No.2	1	7
SS2	2' 0"	2 x 10 SPF No.1/No.2	1	1
SSCa1	12' 0"	2 x 8 SPF No.1/No.2	1	1
SSCa1	11' 0"	2 x 8 SPF No.1/No.2	1	1
SS3	9' 0"	2 x 8 SPF No.1/No.2	1	17
SSCa2	9' 0"	2 x 8 SPF No.1/No.2	1	1
SS4	3' 0"	2 x 8 SPF No.1/No.2	1	1

Total Lengths	
Length	Product
16' 0"	1 1/4" x 9 1/2" 1.3E TimberStrand® LSL
164' 0"	1 1/2" x 5 1/2" 1.3E StrandGuard® TimberStrand® LSL
86' 0"	2 x 10 SPF No.1/No.2
188' 0"	2 x 8 SPF No.1/No.2

Accessories				
PlotID	Length	Product	Plies	Net Qty
		23/32"x48"x96" Weyerhaeuser Edge Gold Panel (0/24) T&G SF	1	12

Products				
PlotID	Length	Product	Plies	Net Qty
M1	16' 0"	1 3/4" x 11 7/8" 1.9E Micromat® LVL	1	1
T51	16' 0"	1 3/4" x 11 7/8" 1.55E TimberStrand® LSL	1	1
SS1	13' 0"	2 x 10 SPF No.1/No.2	1	1
SS2	12' 0"	2 x 10 SPF No.1/No.2	1	2
SS2	11' 0"	2 x 10 SPF No.1/No.2	1	1
SS3	10' 0"	2 x 10 SPF No.1/No.2	1	2
SS3	9' 0"	2 x 10 SPF No.1/No.2	1	3
SS4	8' 0"	2 x 10 SPF No.1/No.2	1	3
SS4	7' 0"	2 x 10 SPF No.1/No.2	1	3
SS5	6' 0"	2 x 10 SPF No.1/No.2	1	4
SS5	5' 0"	2 x 10 SPF No.1/No.2	1	2
SS6	4' 0"	2 x 10 SPF No.1/No.2	1	4
SS6	3' 0"	2 x 10 SPF No.1/No.2	1	3
SS7	2' 0"	2 x 10 SPF No.1/No.2	1	3
2 PLY 2X8	24' 0"	2 x 8 SPF No.1/No.2	2	2
2 PLY 2X8	12' 0"	2 x 8 SPF No.1/No.2	2	2
2 PLY 2X8	10' 0"	2 x 8 SPF No.1/No.2	2	2
2 PLY 2X8	9' 0"	2 x 8 SPF No.1/No.2	2	2

Total Lengths	
Length	Product
16' 0"	1 3/4" x 11 7/8" 1.9E Micromat® LVL
16' 0"	1 3/4" x 11 7/8" 1.55E TimberStrand® LSL
205' 0"	2 x 10 SPF No.1/No.2
110' 0"	2 x 8 SPF No.1/No.2

Accessories				
PlotID	Length	Product	Plies	Net Qty
		23/32"x48"x96" Weyerhaeuser Edge Gold Panel (0/24) T&G SF	1	7

**Design Criteria:**  
 Floor Loading  
 Live Load = 40 psf  
 Dead Load = 12 psf  
 Roof Loading  
 Snow Load = 60 psf ground  
 Dead Load = 15 psf

CONTRACTOR TO VERIFY ALL FRAMING AREAS, DIMENSIONS, OPENINGS, LOADING CONDITIONS, ETC. WITH ARCHITECT/ENGINEER PRIOR TO CONSTRUCTION TO ENSURE COMPLIANCE WITH ARCHITECTURAL DRAWINGS.

**BlueLinX Corporation**  
 419 Maple Street  
 Bellingham, MA 02019  
 Phone: (508) 966-5546  
 Fax: (508) 966-5553

Plans may also be e-mailed to: [BluePlans@blueinlxco.com](mailto:BluePlans@blueinlxco.com)

**FLOOR & ROOF LAYOUT**

PAULA STLSBY  
 Portland, Maine

DATE: 7/28/2015  
 SCALE: 1/4" = 1'-0"  
 DRAWN BY: Guy Peisson

DESCRIPTION

REV BY DATE

PROJECT NUMBER:

SHEET

**1 OF 1**

BlueLinX now offers Precision End Trim Pre-Cut Blocking panels for on center spacings of 12", 16" and 24". All panels are undercut by 7/8" for ease of installation. Speak with your sales representative or design team for more information on these and other great products specified on this plan.