

THIS CABINET TO BE ORDERED AFTER INSTALL OF KITCHEN. DEPTH TO BE DETERMINED

All dimensions, size designations given are subject to verification on job site and adjustment to fit job conditions.

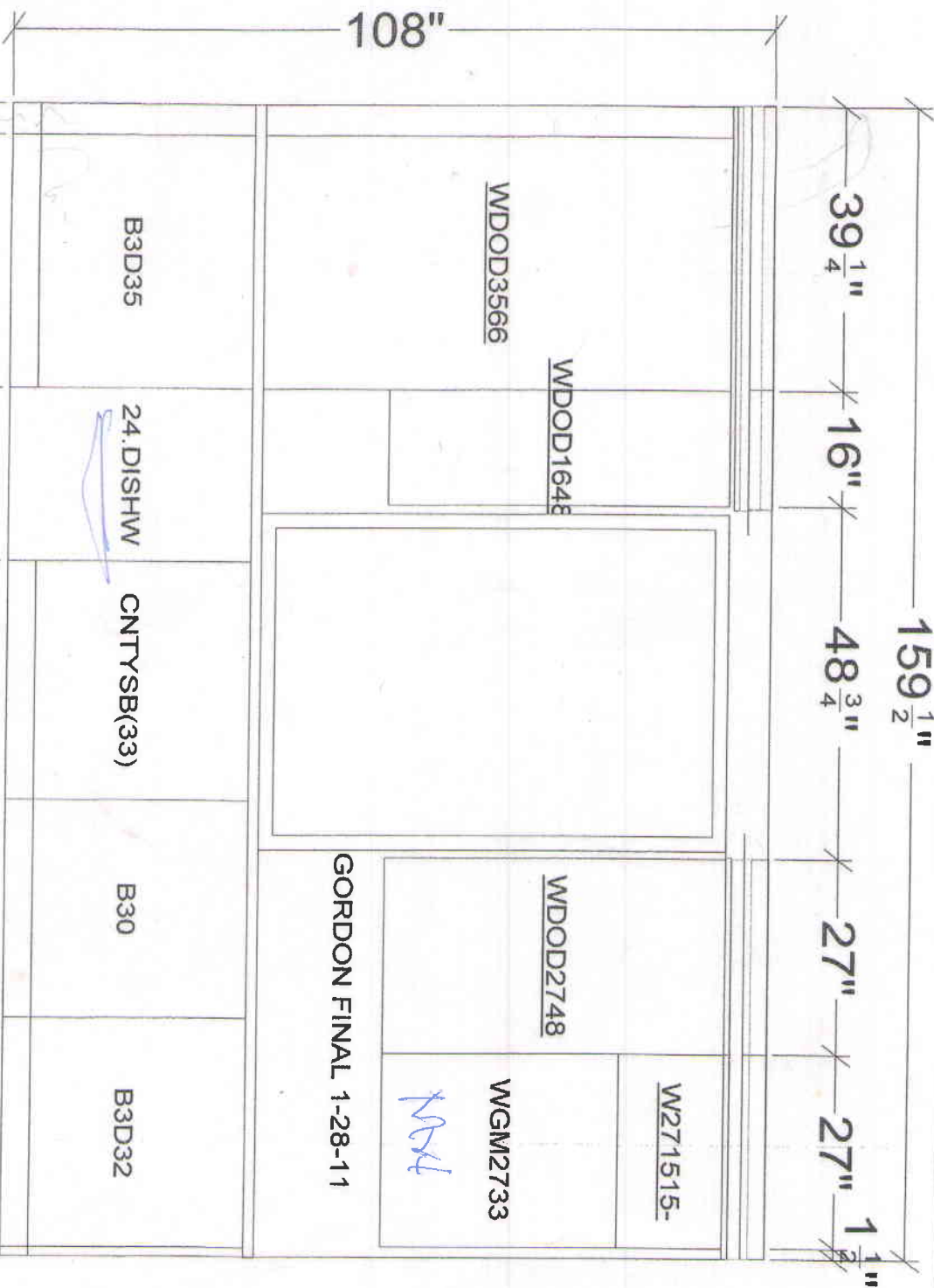
SHERRY McFARLAND
CKD, CBD HOME AGAIN
by HANCOCK LUMBER
207-837-6317
SOUTH PORTLAND, ME

This is an original design and must not be released or copied unless applicable fee has been paid or job order placed.

Designed: 10/15/2010
Printed: 1/28/2011

Gordon 10-10 SOLD

All Drawing #: 1



All dimensions, size designations given are subject to verification on job site and adjustment to fit job conditions.

SHERRY McFARLAND
CKD, CBD HOME AGAIN
by HANCOCK LUMBER
207-837-6317
SOUTH PORTLAND, ME

This is an original design and must not be released or copied unless applicable fee has been paid or job order placed.

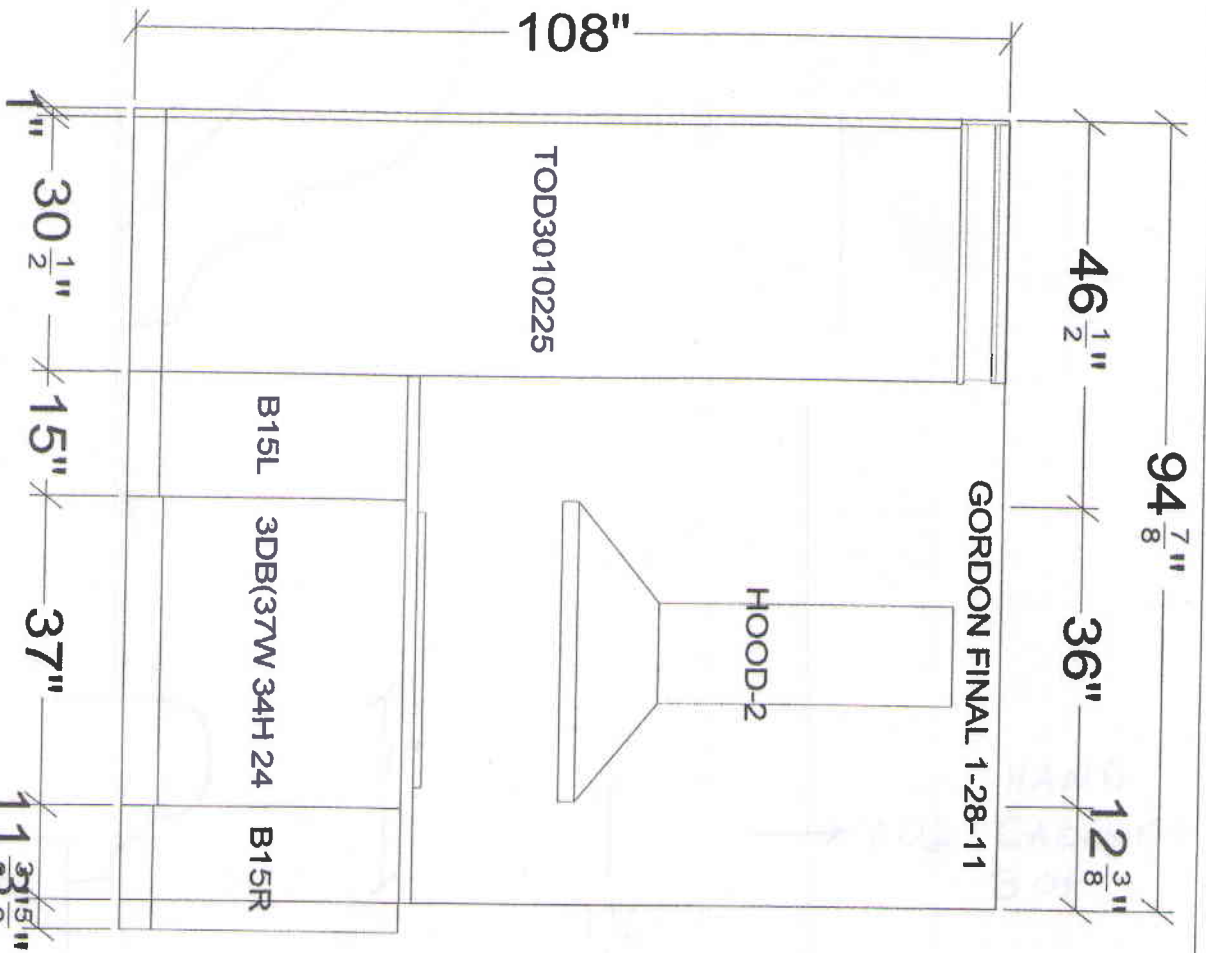
Designed: 10/15/2010
Printed: 1/28/2011

Gordon 10-10 SOLD

EI 1

Drawing #: 1

A.K.D.O.



All dimensions - size designations given are subject to verification on job site and adjustment to fit job conditions.

SHERRY McFARLAND
CKD, CBD HOME AGAIN
by HANCOCK LUMBER
207-837-6317
SOUTH PORTLAND, ME

This is an original design and must not be released or copied unless applicable fee has been paid or job order placed.

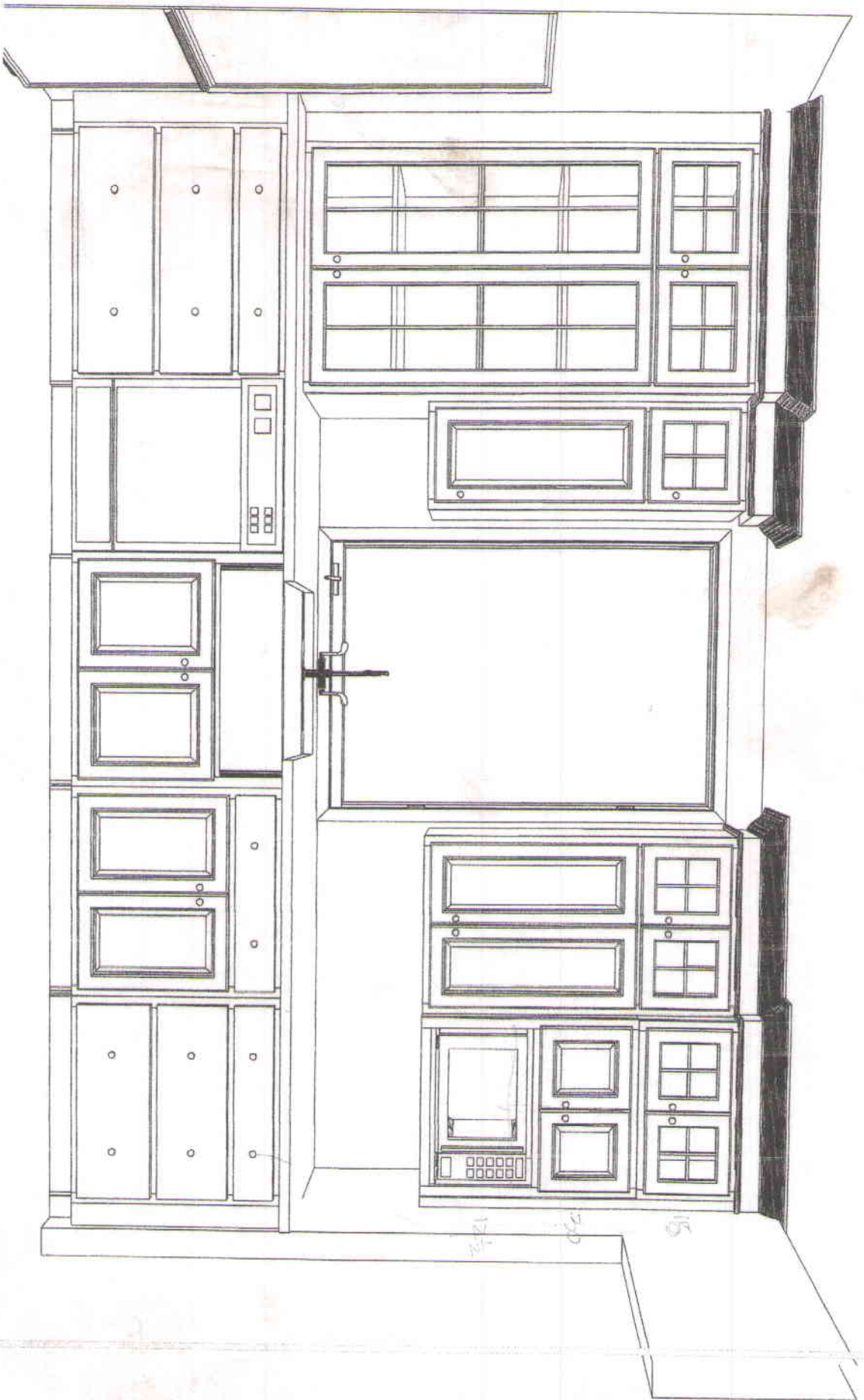
Designed: 10/15/2010
Printed: 1/28/2011

Gordon 10-10 SOLD

EI 2

Drawing #: 1

GORDON KITCHEN, FINAL 1-28-11						
#	CODE	WIDTH	HEIGHT	DEPTH	DESCRIPTION	NOTES
1	WDOD	35	66	18	DOUBLE STACKED WALL CAB, SITS ON CTOP	6" LEFT EXTENDED STILE, MULLION GLASS
2	WDOD	16	48	12 1/2	DOUBLE STACKED WALL CAB	MULLION GLASS
3	WDOD	27	48	12 1/2	DOUBLE STACKED WALL CAB	MULLION GLASS
4	WGM	27	48	15	DOUBLE STACKED WALL CAB	MULLION GLASS, MICROWAVE OPENING
5	TOD	30 1/2	102	25	TALL OVEN CAB	3" LEFT EXTENDED STILE, OVEN CAB
6	B3D	35	34 1/2	24	BASE 3 DRAWER	6" LEFT EXTENDED STILE, VARIOUS DRAWER INSERTS
7	BFD	33	34 1/2	24	BASE FULL HEIGHT DOORS	FARM SINK CAB, ROLL OUT WITH PIPE CUTOUT
8	B	30	34 1/2	24	BASE, 2 DOORS AND DRAWER	2 ROLLOUTS
9	B3D	32	34 1/2	24	BASE 3 DRAWER	3" RIGHT EXTENDED STILE, VARIOUS DRAWER INSERTS
10	B	15	34 1/2	24	BASE, DOOR AND DRAWER	2 ROLLOUTS
11	B3D	37	34 1/2	24	BASE 3 DRAWER	FALSE TOP DRAWER FOR COOKTOP
12	B	15	34 1/2	24	BASE, DOOR AND DRAWER	2 ROLLOUTS
13	MLS				24 LF LIGHT RAIL	1" HIGH X 1 1/2" OUT
14	MOG4				24 LF 4" CROWN	3 1/4" HIGH X 3 1/8" OUT
15	MSS3				24 LF SOLID STOCK	5" HIGH X 3/4" THICK
16	ATUK				TOUCH UP KIT	
17	TKC				4 8 PIECES TOE KICK	
SOAPSTONE SINK IS 29" WIDE X 8" HIGH X 18" DEEP- EXTERIOR DIMENSIONS						



Theresa Gordon 10/25/10

Note: This drawing is an artistic interpretation of the general appearance of the design. It is not meant to be an exact rendition.

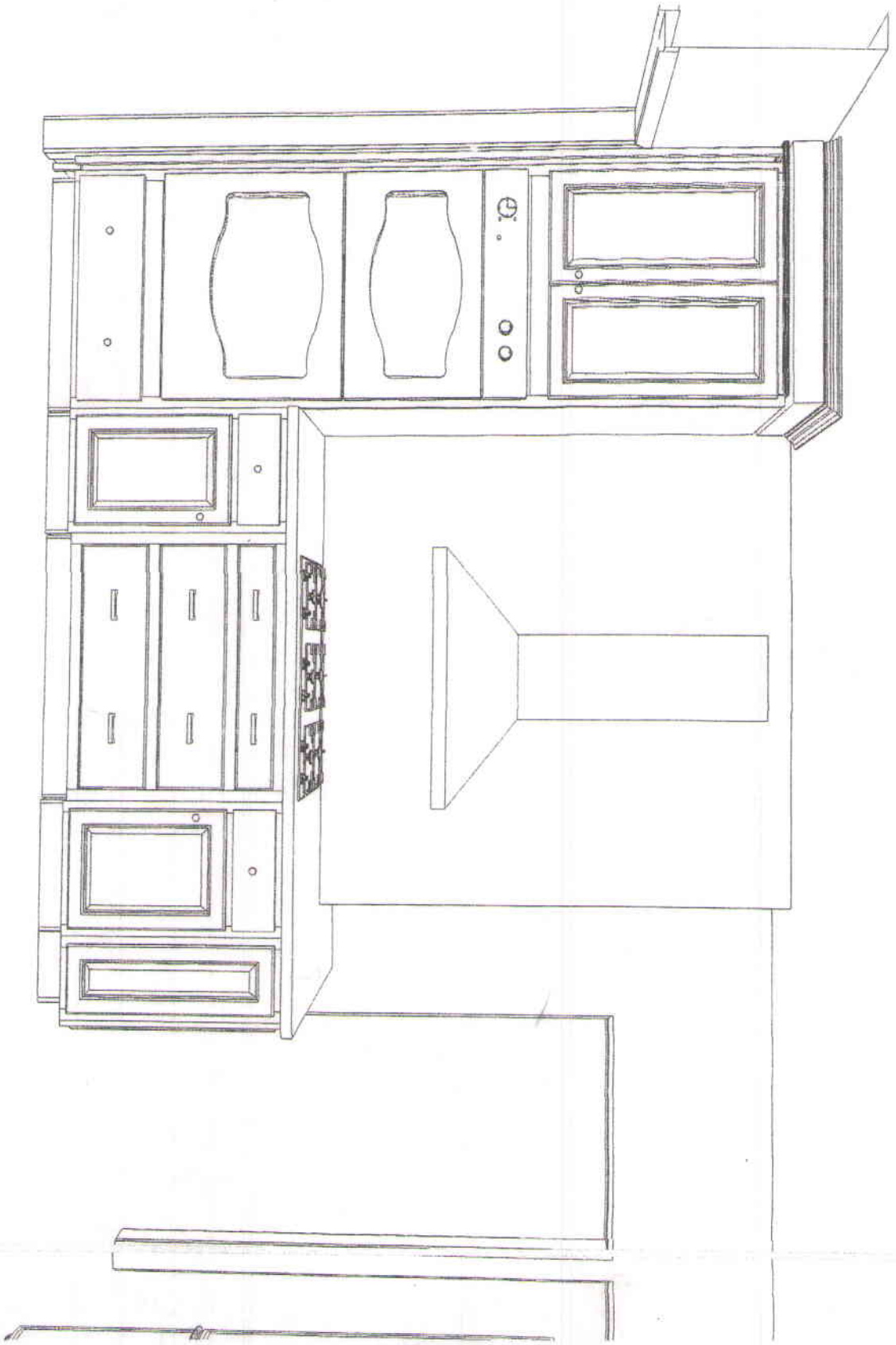
SHERRY McFARLAND
CKD, CBD HOME AGAIN
by HANCOCK LUMBER
207-837-6317
SOUTH PORTLAND, ME

Designed: 10/15/2010
Printed: 10/23/2010

Gordon 10-10

All

Drawing #: 1



Tracy Ryan

Note: This drawing is an artistic interpretation of the general appearance of the design. It is not meant to be an exact rendition.

SHERRY McFARLAND
 CKD, CBD HOME AGAIN
 by HANCOCK LUMBER
 207-837-6317
 SOUTH PORTLAND, ME

Design d: 10/15/2010
 Printed: 10/22/2010

Gordon 10-10

All

Drawing #: 1