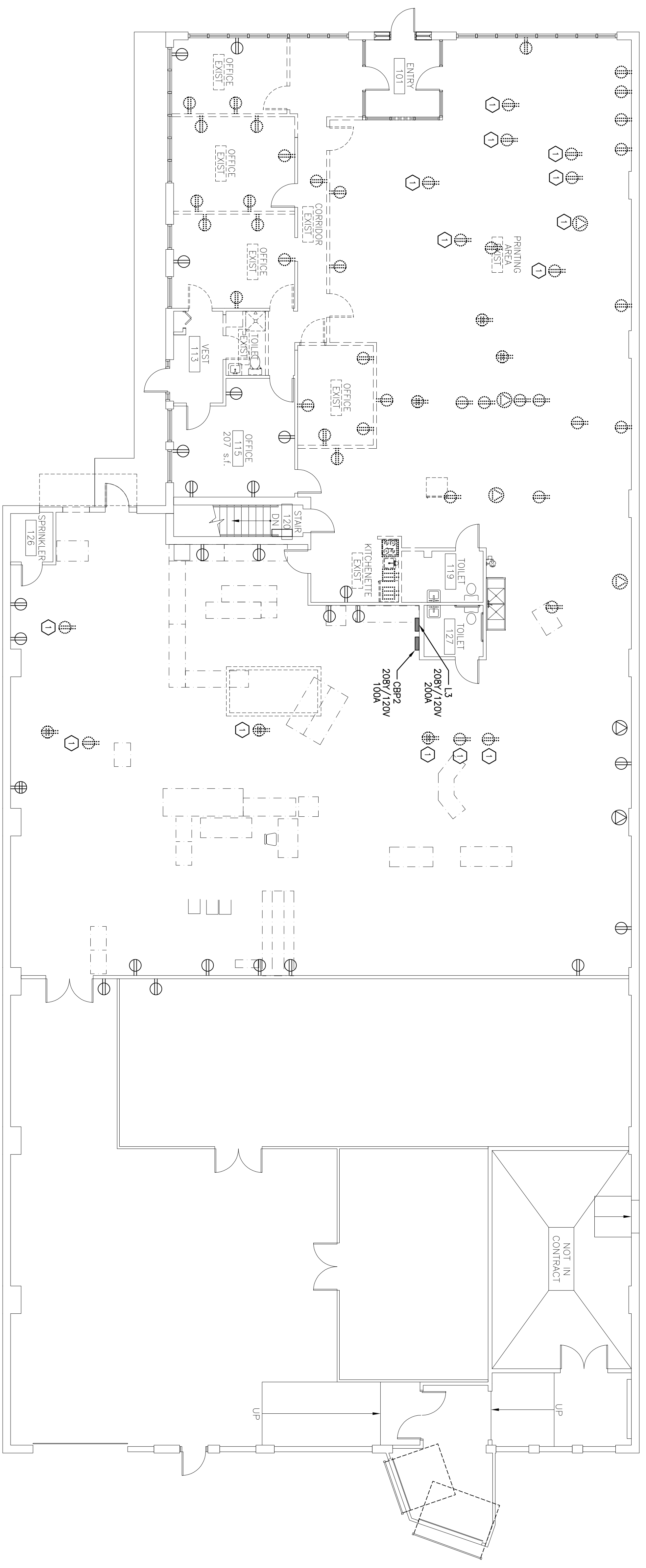


NOTE:
 1. SEE SHEET E-001 FOR LEGEND AND GENERAL NOTES.

KEYED NOTE:
 ① EQUIPMENT BEING RELOCATED AS SHOWN ON SHEET EP101.
 REMOVE ALL ASSOCIATED POWER AND DATA CIRCUITS. THESE
 SAME CIRCUITS ARE TO BE USED TO FEED THE EQUIPMENT IN ITS
 NEW LOCATION. IDENTIFY THE CIRCUITS INVOLVED AND DOCUMENT
 PANEL AND CIRCUIT NUMBER ON THE RECORD DRAWINGS.



A1 FIRST FLOOR DEMOLITION PLAN

1/8"=1'-0"



ARCHITECTURE
 ENGINEERING
 PLANNING
 INTERIOR DESIGN
 COMMISSIONING

144 Fore Street/P.O. Box 618
 Portland, Maine 04104
 tel. (207) 772-3846
 fax. (207) 772-1070
 www.smrting.com



UNIVERSITY OF SOUTHERN MAINE
 RENOVATION 501 FOREST AVENUE
 PORTLAND, MAINE

ISSUED FOR DESIGN DEVELOPMENT
 4-12-10

CURRENT ISSUE STATUS:

REV	DESCRIPTION	DATE

GRAPHIC SCALE:
 0 1'

SCALE: 1/8"=1'-0"

PROJECT MANAGER: SLB
 I.C./DRAWN BY: CDS
 A/E OF RECORD: DJT
 CAD FILE: ED101-091748
 PROJECT NO: 091748
 DATE: 09/14/08

SHEET TITLE:
 FIRST FLOOR
 POWER
 DEMOLITION PLAN

SHEET No. ED101

© COPYRIGHT 2010 SMRT INC.