

**AIRTEMP INC.**  
**MECHANICAL CONTRACTORS**  
**20 THOMAS DRIVE**  
**WESTBROOK, MAINE 04092**  
**207-774-2300**  
**207-874-2383 FAX**

**A COMFORT SYSTEMS USA COMPANY**  
**QUALITY PEOPLE – BUILDING SOLUTIONS**

**SUBMITTAL**

**JOB: ALTA VISTA**  
**DATE: 7/27/17**  
**LOCATION: FOREST AVE PORTLAND**  
**MECHANICAL CONTRACTOR: AIRTEMP INC.**

**AIRTEMP JOB NUMBER: 884**

\*\*\*\*\*

**AIRTEMP IS PLEASED TO SUBMIT THE FOLLOWING ITEM(S) FOR APPROVAL:**

**SPLIT SYSTEMS**

**PLEASE RETURN .PDF OF REVIEWED SUBMITTAL TO US**



Submittal Transmittal

Submittal #    1-001

To:	Airtemp
From:	Homans Associates 250 Ballardvale Street Wilmington, MA 01887

Date:	7/27/2017
Transmitted By:	Nick St.Ours
Copied To:	

Project	Alta Vista	Architect	
Order #		Engineer	
Purchaser	Dean Grant		

**Submittal Name:**    **Mitsubishi Equipment**

Submitted For :	Via:	The Following:
<input checked="" type="checkbox"/> Approval/Action <input type="checkbox"/> Information <input type="checkbox"/> Distribution <input type="checkbox"/> Record <input type="checkbox"/> <b>Revised/Resubmit</b>	<input type="checkbox"/> Overnight Delivery <input type="checkbox"/> Mail <input checked="" type="checkbox"/> E-Mail <input type="checkbox"/> Courier <input type="checkbox"/> Fax <input type="checkbox"/> Other	<input type="checkbox"/> Drawings <input type="checkbox"/> Specifications <input type="checkbox"/> Digital Files <input checked="" type="checkbox"/> Submittals <input type="checkbox"/> O & M Manuals <input type="checkbox"/> Other

**Includes the following:**

Unit Tag #	Model	Description	Format	Item Action	QTY:
CU-1/AC-1	PUY-A12NKA7	P Series Cooling Only	PDF	For Approval	1
CU-2	MXZ-2C20NAHZ	MXZ Hyper Heat Outdoor Unit	PDF	For Approval	1
AC-2-1/AC-2-2	MSZ-GL09NA	Wall Mount Indoor Unit	PDF	For Approval	2
CU-3	MXZ-5C42NAHZ	MXZ Hyper Heat Outdoor Unit	PDF	For Approval	1
AC-3-1	PEAD-18AA7	Ducted Indoor Unit	PDF	For Approval	1
AC-3-2	PEAD-24AA7	Ducted Indoor Unit	PDF	For Approval	1
CU-1/CU-2	QSMS2401	24" Stand	PDF	For Approval	2
CU-3	QSMS2402	24" Wide Stand	PDF	For Approval	1



Job Name:

System Reference:

Date:

Indoor Unit:

PKA-A12HA7

Outdoor Unit:

 PUY-A12NKA7 PUY-A12NKA7-BS**INDOOR UNIT FEATURES**

- Sleek, compact design
- Simple installation
- Vane setting for air flow direction control
- Auto fan speed mode
- Ideal for spaces such as server rooms, daycare centers, classrooms, churches, small offices, and more

**OUTDOOR UNIT FEATURES**

- Variable speed INVERTER-driven compressor
- Suction accumulator pre-charged with refrigerant volume for piping length up to 100 ft (70 ft. for A12/18/24/30)
- Low ambient cooling down to -20°F providing 100% capacity (only for PUY models with wind baffles installed)
- 24-hour continuous operation (cooling mode)
- High pressure protection
- Fast restart due to bypass valve make it ideal for equipment cooling applications, such as data centers
- Superior energy and operational efficiency

## SPECIFICATIONS: PKA-A12HA7 & PUY-A12NKA7(-BS)

Model Number	Indoor Unit		PKA-A12HA7
	Outdoor Unit		PUY-A12NKA7
			PUY-A12NKA7-BS
Cooling*1	Maximum Capacity	Btu/h	12,000
	Rated Capacity	Btu/h	12,000
	Minimum Capacity	Btu/h	5,800
	Maximum Power Input	W	1,000
	Rated Power Input	W	1,000
	Moisture Removal	Pints/h	2.0
	Sensible Heat Factor		0.81
	Power Factor	%	94.5
Efficiency	SEER		20.8
	EER *1		12.0
Electrical	Voltage, Phase, Frequency		208 / 230V, 1-phase, 60 Hz
	Guaranteed Voltage Range	V AC	187 - 253
	Voltage: Indoor - Outdoor, S1-S2	V AC	208V / 230
	Voltage: Indoor - Outdoor, S2-S3	V DC	24
	Voltage: Indoor - Remote controller	V DC	12
	Recommended Fuse/Breaker Size	A	15
	Recommended Wire Size (Indoor - Outdoor)	AWG	14
Indoor Unit	MCA	A	1
	MOCP	A	15
	Fan Motor Full Load Amperage	A	0.33
	Fan Motor Output	W	30
	Airflow Rate, Dry	CFM	320-370-425
	Airflow Rate, Wet	CFM	290-335-380
	External Static Pressure	in.WG	n/a
	Sound Pressure Level	dB(A)	36-40-43
	Drain Pipe Size	In. (mm)	5/8 (16)
	Condensate Lift Mechanism, Max. Distance	In. (mm)	n/a
	Heat Exchanger Type		Plate fin coil
	External Finish Color		White Munsell 1.0Y 9.2/0.2
	Unit Dimensions	W: In. (mm)	35-3/8 (898)
		D: In. (mm)	9-13/16 (249)
H: In. (mm)		11-5/8 (295)	
Package Dimensions	W: In.	39-6/16	

## SPECIFICATIONS: PKA-A12HA7 & PUY-A12NKA7(-BS)

Model Number	Indoor Unit		PKA-A12HA7	
	Outdoor Unit		PUY-A12NKA7	
			PUY-A12NKA7-BS	
		D: In.	15-12/16	
		H: In.	13-6/16	
	Unit Weight	Lbs. (kg)	29 (13)	
	Package Weight	Lbs.	33	
Indoor Unit Operating Temperature range	Cooling Intake Air Temp (Maximum / Minimum)	°F	90 DB, 73 WB / 66 DB, 59 WB	
Outdoor Unit	MCA	A	11	
	MOCP	A	28	
	Fan Motor Full Load Amperage	A	0.50	
	Fan Motor Output	W	46	
	Airflow Rate	CFM	1,590	
	Refrigerant Control	Electronic Expansion Valve		
	Heat Exchanger Type	Cross fin		
	Sound Pressure Level, Cooling*1	dB(A)	44	
	Sound Pressure Level, Heating*2	dB(A)	46	
	Compressor Type	INVERTER-driven twin rotary		
	Compressor Model	SNB092FNCM		
	Compressor Rated Load Amps	A	7	
	Compressor Locked Rotor Amps	A	12	
	Compressor Oil Type // Charge	oz.	FV50S // 12	
	External Finish Color	Ivory Munsell 3Y 7.8/1.1		
	Base Pan Heater	n/a		
	Unit Dimensions	W: In. (mm)	31-13/16 + 7/16 (809+62)	
		D: In. (mm)	11-3/16 (300)	
		H: In. (mm)	24-13/16 (630)	
	Package Dimensions	W: In.	37-1/16	
		D: In.	16-3/16	
		H: In.	27-7/16	
	Unit Weight	Lbs. (kg)	92 (41)	
Package Weight	Lbs. (kg)	104 (47)		

## SPECIFICATIONS: PKA-A12HA7 & PUY-A12NKA7(-BS)

Model Number	Indoor Unit		PKA-A12HA7
	Outdoor Unit		PUY-A12NKA7
			PUY-A12NKA7-BS
Outdoor Unit Operating Temperature Range	Cooling Intake Air Temp (Maximum / Minimum)	°F	115 DB / -20* DB
Refrigerant	Type		R410A
	Charge	Lbs, oz	4 lbs, 7 oz
Piping	Gas Pipe Size O.D. (Flared)	In.(mm)	1/2 (12.7)
	Liquid Pipe Size O.D. (Flared)	In.(mm)	1/4 (6.35)
	Maximum Piping Length	Ft. (m)	165 (50)
	Maximum Height Difference	Ft. (m)	100 (30)
	Maximum Number of Bends		15

AHRI Rated Conditions (Rated data is determined at a fixed compressor speed)	*1 Cooling (Indoor // Outdoor)	°F	80°F DB, 67°F WB // 95°F DB, 75°F WB
---	--------------------------------	----	--------------------------------------

<p><b>Notes</b></p> <p>*Wind baffles required to operate below 23°F DB in cooling mode. PUY with wind baffle: -20°F - 115°F. Refer to wind baffle documentation for further information.</p> <p>**System cuts out in heating mode to avoid thermistor error and automatically restarts at these temperatures</p> <p><b>SEACOAST PROTECTION</b></p> <ul style="list-style-type: none"> <li>External Outer Panel: Phosphate coating + Acrylic-Enamel coating</li> <li>Fan Motor Support: Epoxy resin coating (at edge face)</li> <li>Separator Assembly; Valve Bed: Epoxy resin coating (at edge face)</li> <li>“Blue Fin” treatment is an anti-corrosion treatment that is applied to the condenser coil to protect it against airborne contaminants.</li> </ul>
---

Notes:

## ACCESSORIES: PKA-A12HA7 & PUY-A12NKA7(-BS)

PKA-A12HA7	
3-Pole Disconnect Switch (30A/600V/UL) [fits 2" X 4" utility box]	<input type="checkbox"/> TAZ-MS303
Drain Pan Level Sensor (Control for indoor unit shut off to prevent drain pan overflow)	<input type="checkbox"/> DPLS2
MaxiBlue Advanced Blue Diamond Mini-Condensation pump w/ Reservoir & Sensor (110V) up to 48,000 Btu/h [recommended]	<input type="checkbox"/> X87-711 - 110
MaxiBlue Advanced Blue Diamond Mini-Condensation pump w/ Reservoir & Sensor (208/230V) up to 48,000 Btu/h [recommended]	<input type="checkbox"/> X87-721 - 208/230
MicroBlue Blue Diamond Mini Condensate Pump (110/208/230V)	<input type="checkbox"/> XA5-003
Fascia Kit for MicroBlue Pump – mounts beneath pump	<input type="checkbox"/> T18-016
Extension Cord for Blue Diamond Pump	<input type="checkbox"/> C13-103
Sauermann Mini-Condensation pump (115V)	<input type="checkbox"/> SI30-115
Sauermann Mini-Condensation pump (230V)	<input type="checkbox"/> SI30-230
MegaBlue Blue Diamond Condensate Pump (110-230V)	<input type="checkbox"/> X87-835
Remote Sensor (extensible)	<input type="checkbox"/> PAC-SE41TS-E
Connector for CN32 (remote ON/OFF)	<input type="checkbox"/> PAC-SE55RA-E
Connector for CN152 (Back up heating)	<input type="checkbox"/> PAC-SE59RA-E
External fan / Heater control relay adapter	<input type="checkbox"/> CN24RELAY-KIT-CM3
Backlit, wall-mounted, wireless	<input type="checkbox"/> MHK1
Wireless Remote Controller	<input type="checkbox"/> MRCH1
Wireless Receiver	<input type="checkbox"/> MFH1
Portable Central Controller	<input type="checkbox"/> MCCH1
Outside Air Sensor	<input type="checkbox"/> MOS1
Wireless adapter	<input type="checkbox"/> PAC-USWHS002-WF-1
BACnet® and Modbus Interface	<input type="checkbox"/> PAC-UKPRC001-CN-1
Wall-mounted, Wired	<input type="checkbox"/> PAC-YT53CRAU-J
Wired remote controller	<input type="checkbox"/> PAR-32MAA-J
T-STAT Interface	<input type="checkbox"/> PAC-US444CN-1
Wired remote controller	<input type="checkbox"/> PAR-32MAA
Simple remote controller	<input type="checkbox"/> PAC-YT53CRAU
Wireless Remote Controller	<input type="checkbox"/> PAR-FL32MA-E
Wire for Remote ON/OFF with CN32 connector	<input type="checkbox"/> PAC-715AD
Lockdown Bracket for wireless, hand-held, remote controllers	<input type="checkbox"/> RCMKP1CB

PUY-A12NKA7(-BS)	
Air Outlet Guide	<input type="checkbox"/> PAC-SJ07SG-E
Front Wind Baffle	<input type="checkbox"/> WB-PA4



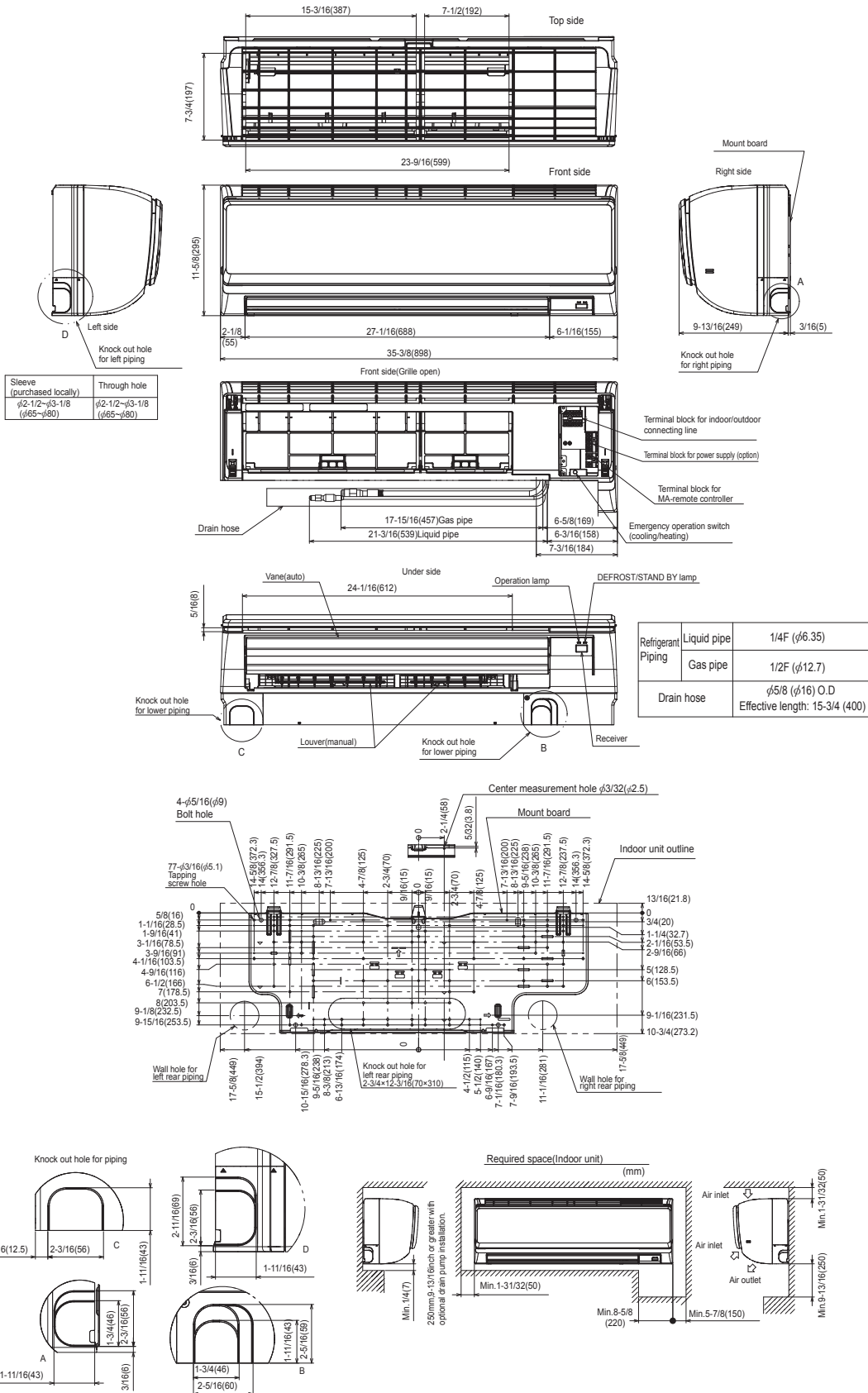
## ACCESSORIES: PKA-A12HA7 & PUY-A12NKA7(-BS)

PUY-A12NKA7(-BS)	
Side Advanced Wind Baffle	<input type="checkbox"/> WB-SD4
Rear Advanced Wind Baffle	<input type="checkbox"/> WB-RE4
Drain Socket	<input type="checkbox"/> PAC-SJ08DS-E
Centralized Drain Pan	<input type="checkbox"/> PAC-SG63DP-E
Control/Service Tool	<input type="checkbox"/> PAC-SK52ST
Wall Mounting Bracket (Powder-coated Steel)	<input type="checkbox"/> QCWB2000M-1
Wall Mounting Bracket (316 Series Stainless Steel)	<input type="checkbox"/> QSWBSS
M-NET Control Adapter for Building Management System	<input type="checkbox"/> PAC-SF83MA-E
Outdoor Unit Mounting Pad 16" x 36" x 3"	<input type="checkbox"/> ULTRILITE1
Outdoor Unit 3-1/4 inch Mounting Base - Pair (Plastic)	<input type="checkbox"/> DSD-400N
MiniSplit Mounting Stand-Single Fan Models - 12"	<input type="checkbox"/> QSMS1201M
MiniSplit Mounting Stand-Single Fan Models - 18"	<input type="checkbox"/> QSMS1801M
MiniSplit Mounting Stand-Single Fan Models - 24"	<input type="checkbox"/> QSMS2401M
1/4 x 1/2 x 15' / 1/2" Lineset (Twin-Tube Insulation)	<input type="checkbox"/> MLS141212T-15
1/4 x 1/2 x 30' / 1/2" Lineset (Twin-Tube Insulation)	<input type="checkbox"/> MLS141212T-30
1/4 x 1/2 x 50' / 1/2" Lineset (Twin-Tube Insulation)	<input type="checkbox"/> MLS141212T-50
1/4 x 1/2 x 65' / 1/2" Lineset (Twin-Tube Insulation)	<input type="checkbox"/> MLS141212T-65
1/4 x 1/2 x 100' / 1/2" Lineset (Twin-Tube Insulation)	<input type="checkbox"/> MLS141212T-100

# DIMENSIONS: PKA-A12HA7 & PUY-A12NKA7 (-BS)

## PKA-A12HA7

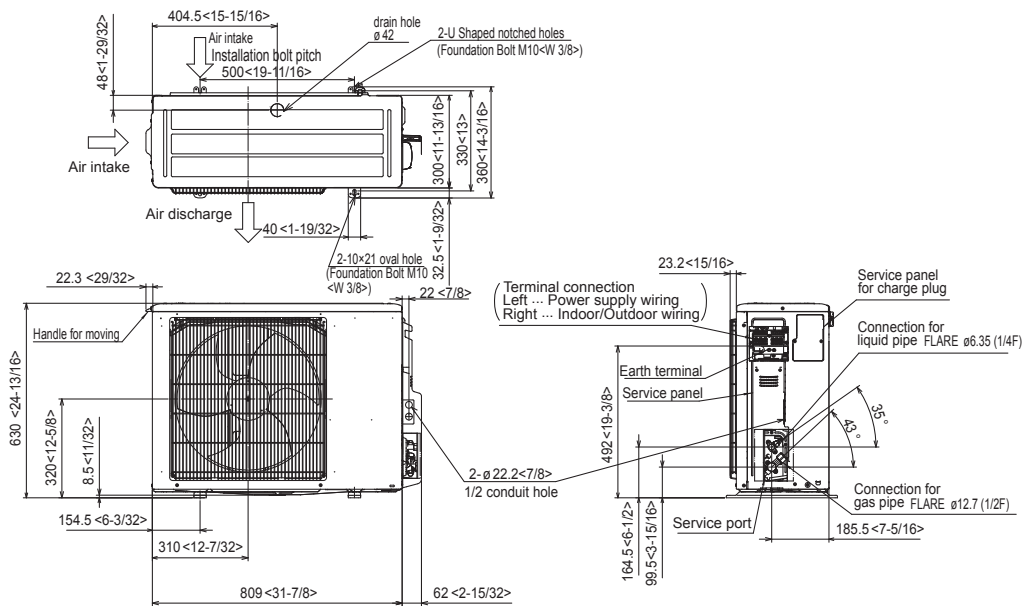
Unit: inch (mm)



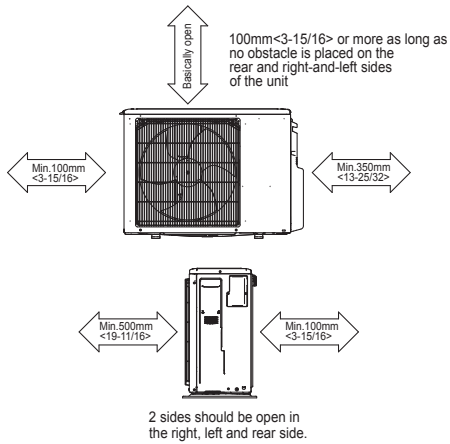
# DIMENSIONS: PKA-A12HA7 & PUY-A12NKA7 (-BS)

## PUY-A12NKA7(-BS)

Unit: mm<in>

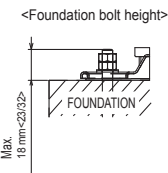


### Free space around the outdoor unit (basic example)



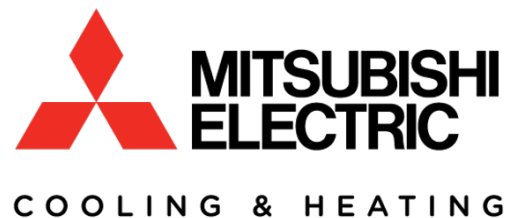
### FOUNDATION BOLTS

Please secure the unit firmly with 4 foundation (M10<W3/8>) bolts. (Bolts, washers and nut must be purchased locally).



### PIPING-WIRING DIRECTION

Piping and wiring connection can be made from the rear direction only.



1340 Satellite Boulevard, Suwanee, GA 30024  
 Toll Free: 800-433-4822 www.mehvac.com

FORM# PKA-A12HA7 / PUY-A12NKA7(-BS) - 201703



Specifications are subject to change without notice.

Copyright © 2017 Mitsubishi Electric US, Inc.

Job Name:	Date:
System Reference:	



Outdoor Unit: MXZ-2C20NAHZ2

### ACCESSORIES

- 3/8" x 1/2" Port Adapter (MAC-A454JP; for use with 15,000 Btu/h Indoor units)
- M-NET Adapter (PAC-IF01MNT-E)
- Airflow Guide (PAC-SH96SG-E)

(For data on specific indoor units, see the MXZ-C Technical and Service Manual.)

Specifications			Model Name
Unit Type			MXZ-2C20NAHZ2
Cooling* (Non-ducted / Ducted)	Rated Capacity	Btu/h	18,000 / 20,000
	Capacity Range	Btu/h	6,000 - 20,000
	Rated Total Input	W	1,334 / 1,819
Heating at 47°F* (Non-ducted / Ducted)	Rated Capacity	Btu/h	22,000 / 22,000
	Capacity Range	Btu/h	7,400 - 25,500
	Rated Total Input	W	1,612 / 1,748
Heating at 17°F* (Non-ducted/Ducted)	Rated Capacity	Btu/h	13,700 / 13,700
	Maximum Capacity	Btu/h	22,000 / 22,000
	Rated Total Input	W	1,450 / 1,588
Heating at 5°F*	Maximum Capacity	Btu/h	22,000
Energy Star® (ENERGY STAR products are third-party certified by an EPA-recognized Certification Body.)			Yes
Electrical Requirements	Power Supply	Voltage, Phase, Hertz	208 / 230V, 1-Phase, 60 Hz
	Recommended Fuse/Breaker Size	A	40
	MCA	A	29.5
Voltage	Indoor - Outdoor S1-S2	V	AC 208 / 230
	Indoor - Outdoor S2-S3	V	DC ±24
Compressor			DC INVERTER-driven Twin Rotary
Fan Motor (ECM)		F.L.A.	2.43
Sound Pressure Level	Cooling	dB(A)	54
	Heating		58
External Dimensions (H x W x D)		In / mm	41-9/32 x 37-13/32 x 13 1048 x 950 x 330
Net Weight		Lbs / kg	187 / 85
External Finish			Munsell No. 3Y 7.8/11
Refrigerant Pipe Size O.D.	Liquid (High Pressure)	In / mm	1/4 / 6.35
	Gas (Low Pressure)		A,B: 3/8 / 9.52
Max. Refrigerant Line Length		Ft / m	164 / 50
Max. Piping Length for Each Indoor Unit		Ft / m	82 / 25
Max. Refrigerant Pipe Height Difference	If IDU is Above ODU	Ft / m	49 / 15
	If IDU is Below ODU		49 / 15
Connection Method			Flared/Flared
Refrigerant			R410A

**\* Rating Conditions per AHRI Standard:**

Cooling | Indoor: 80° F (27° C) DB / 67° F (19° C) WB  
Cooling | Outdoor: 95° F (35° C) DB / W.B. 23.9° C (75° F)

Heating at 47°F | Indoor: 70° F (21° C) DB / 60° F (16° C) WB  
Heating at 47°F | Outdoor: 47° F (8° C) DB / 43° F (6° C) WB

Heating at 17° F | Indoor: 70° F (21° C) DB  
Heating at 17° F | Outdoor: 17° F (-8° C) DB / 15° F (-9° C) WB

# SPECIFICATIONS: MXZ-2C20NAHZ2 , contd.

**OPERATING RANGE:**

	Outdoor
Cooling	D.B. 14 to 115° F [ D.B. -10 to 46° C]*1
Heating	W.B. -13 to 65° F [ W.B. -25 to 18° C ]

\*1. D.B. 5 to 115° F [ D.B. -15 to 46° C ], when an optional Air Outlet Guide is installed.

**ENERGY EFFICIENCIES:**

Indoor Unit Type	SEER	EER	HSPF	COP @ 47°F	COP @ 17°F
<b>Non-ducted (09 + 09)</b>	17.0	13.5	9.8	4.00	2.77
<b>Ducted and Non-ducted</b>	16.00	12.25	9.65	3.85	2.65
<b>Ducted (09 + 12)</b>	15.0	11.0	9.5	3.69	2.53

**NOTES:**

- Minimum of two Indoor Units must be connected to the MXZ-2C20NAHZ2.
- Minimum installed capacity cannot be less than 12,000 Btu/h.
- Total connected capacity must not exceed 130% of outdoor unit capacity.
- System can operate with only one Indoor Unit turned on.
- Information provided at 208/230V.
- For Reference:
  - MXZ-C Technical & Service Manual for detailed specifications and additional information per Indoor Unit Combination.
  - MXZ Series Multi-Zone Indoor/Outdoor Combination Table for allowed unit combinations.

**MVZ CONNECTION RULES:**

- Only 1 MVZ may be used on any system.
- When an MVZ is connected, total connected capacity must be 100% or less.
- When an MVZ is connected, no P-Series indoor units can be used (PCA, PLA, or PEAD).

Notes:

# MXZ-2C20NAHZ2 OPERATIONAL PERFORMANCE

## NON-DUCTED:

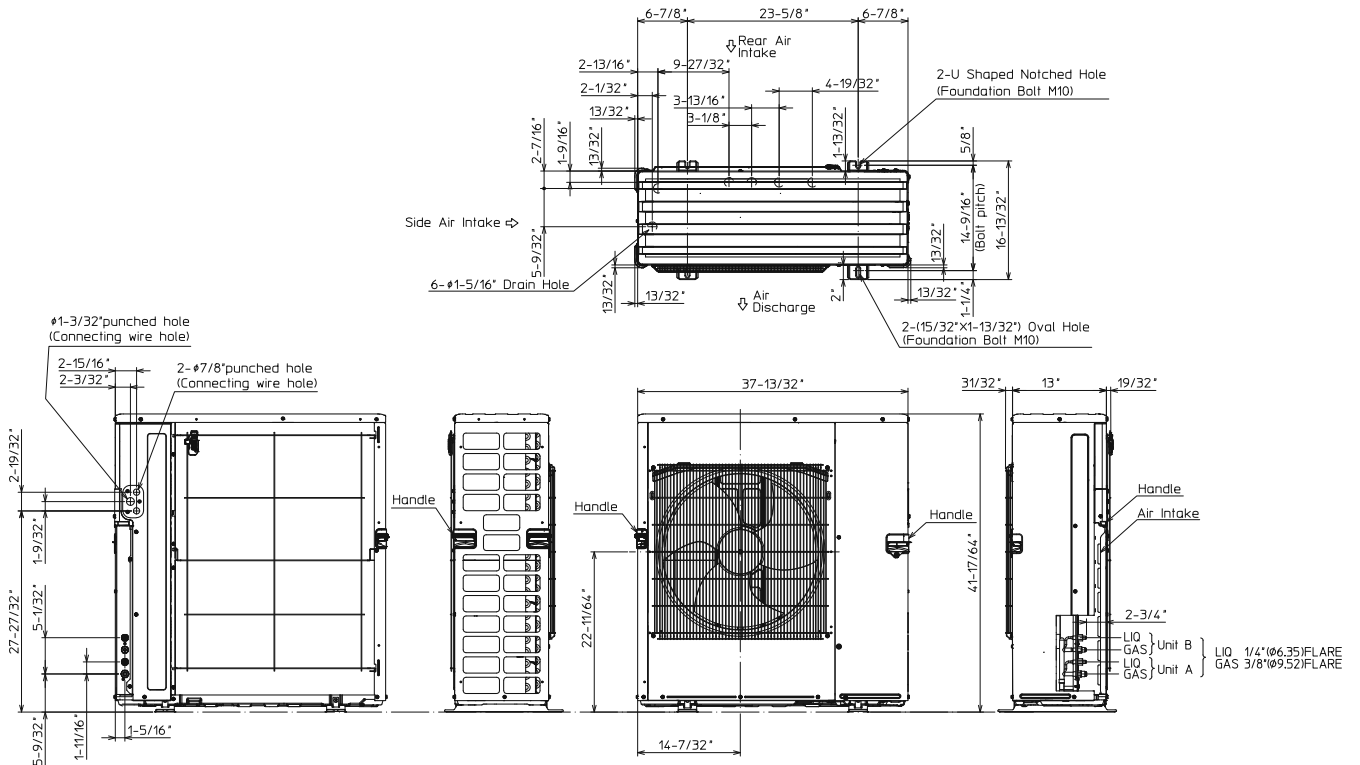
# of indoor unit	Total Nominal Capacity (x1000 Btu/h)	Total Indoor Unit Capacity (Btu/h)	Operational Performance for Indoor Unit Combinations (Unit A + Unit B + Unit C)	Cooling Capacity Range (Btu/h)		
				Heating Capacity Range (Btu/h)		
				Unit A	Unit B	Unit C
1	6	6,000	6	6,000	-	-
		7,400		7,400	-	-
1	9	9,000	9	9,000	-	-
		11,000		11,000	-	-
1	12	12,000	12	12,000	-	-
		14,400		14,400	-	-
1	15	14,000	15	14,000	-	-
		18,000		18,000	-	-
2	12	12,000	6 + 6	6,000	6,000	-
		14,800		7,400	7,400	-
2	15	15,000	6 + 9	6,000	9,000	-
		18,400		7,400	11,000	-
2	18	18,000	6 + 12	6,000	12,000	-
		22,000		7,500	14,500	-
2	18	18,000	9 + 9	9,000	9,000	-
		22,000		11,000	11,000	-
2	21	20,000	6 + 15	6,000	14,000	-
		22,000		6,400	15,600	-
2	21	20,000	9 + 12	8,600	11,400	-
		22,000		9,500	12,500	-
2	24	20,000	9 + 15	7,800	12,200	-
		22,000		8,300	13,700	-
2	24	20,000	12 + 12	10,000	10,000	-
		22,000		11,000	11,000	-

## DUCTED:

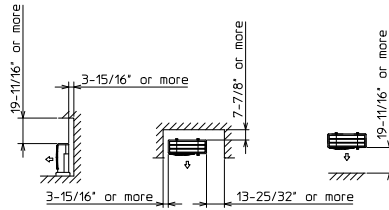
# of indoor unit	Total Nominal Capacity (x1000 Btu/h)	Total Indoor Unit Capacity (Btu/h)	Operational Performance for Indoor Unit Combinations (Unit A + Unit B + Unit C)	Cooling Capacity Range (Btu/h)		
				Heating Capacity Range (Btu/h)		
				Unit A	Unit B	Unit C
1	9	9,000	9	9,000	-	-
		10,900		10,900	-	-
1	12	12,000	12	12,000	-	-
		13,600		13,600	-	-
1	15	15,000	15	15,000	-	-
		18,000		18,000	-	-
2	18	18,000	9 + 9	9,000	9,000	-
		21,800		10,900	10,900	-
2	21	20,000	9 + 12	8,600	11,400	-
		22,000		9,800	12,200	-
2	24	20,000	9 + 15	7,500	12,500	-
		22,000		8,300	13,700	-
2	24	20,000	12 + 12	10,000	10,000	-
		22,000		11,000	11,000	-

# DIMENSIONS: MXZ-2C20NAHZ2

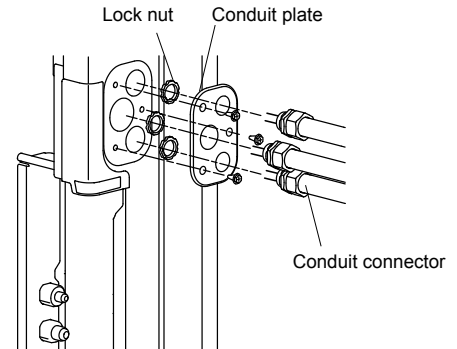
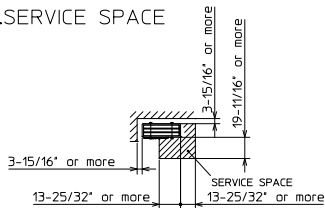
Unit: inch (mm)



## 1. FREE SPACE



## 2. SERVICE SPACE



COOLING & HEATING

1340 Satellite Boulevard, Suwanee, GA 30024  
Toll Free: 800-433-4822 www.mehvac.com



Job Name:	Date:
System Reference:	



Indoor Unit: MSZ-GL09NA-U1



Wireless Remote Controller

### SPECIFICATIONS:

Rated Capacity*		
Cooling <sup>1</sup>	Btu/h / W	9,000
Heating at 47° F <sup>2</sup>	Btu/h / W	10,900

Rating Conditions per AHRI Standard:

<sup>1</sup> Cooling | Indoor: 80° F (27° C)DB / 67° F (19° C)WB; Outdoor: 95° F (35° C)DB / 75° F (24° C)WB  
<sup>2</sup> Heating at 47°F | Indoor: 70° F (21° C)DB / 60° F (16° C)WB; Outdoor: 47° F (8° C)DB / 43° F (6° C)WB

For data on specific indoor units (all ducted, all non-ducted, and both ducted and non-ducted) combinations, see the MXZ Technical and Service Manual.

Applications should be restricted to comfort cooling only; equipment cooling applications are not recommended for low ambient temperature conditions.

### ACCESSORIES:

#### Indoor Unit

- Condensate Pump (BlueDiamond X87-711/721; 115/230V)
- Condensate Pump (Sauermann SI30-115/230; 115/230V)
- Anti-Allergy Enzyme Filter (MAC-408FT-E)
- Platinum Catalyst Deodorizing Filter (MAC-308FT-E)
- Drain Pan Level Sensor (DPLS2)

#### Controls

- Wireless Controller (MHK1)
- Wired Remote Controller PAR-32MAA (Requires MAC-333IF-E)
- Wireless Interface for kumo cloud™ (PAC-USWHS002-WF-1)
- Thermostat Interface (PAC-US444CN-1)

Electrical Power Requirements	208 / 230V, 1-Phase, 60 Hz	
-------------------------------	----------------------------	--

Minimum Circuit Ampacity (MCA)	A	1.0
--------------------------------	---	-----

Blower Motor (ECM)	F.L.A.	0.76
--------------------	--------	------

Blower Motor Output	W	30
---------------------	---	----

Field Drainpipe Size O.D.	In.(mm)	5/8 (15)
---------------------------	---------	----------

Airflow Rate (Quiet - Lo - Med - Hi - Super Hi)			
Cooling	DRY	CFM	145-170-237-321-399
	WET		109-134-201-286-364
Heating	DRY		145-170-237-321-406

Sound Pressure Level (Quiet - Lo - Med - Hi - Super Hi)		
Cooling	dB(A)	19-22-30-37-43
Heating		19-22-30-37-43

External Dimensions (H x W x D)	In.(mm)	11-5/8 x 31-7/16 x 9-1/8 (295 x 798 x 232)
---------------------------------	---------	---

Net Weight	Lbs.(kg)	29 (12)
------------	----------	---------

External Finish	Munsell 1.0Y 9.2 / 0.2	
-----------------	------------------------	--

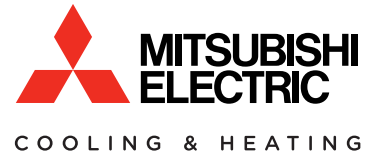
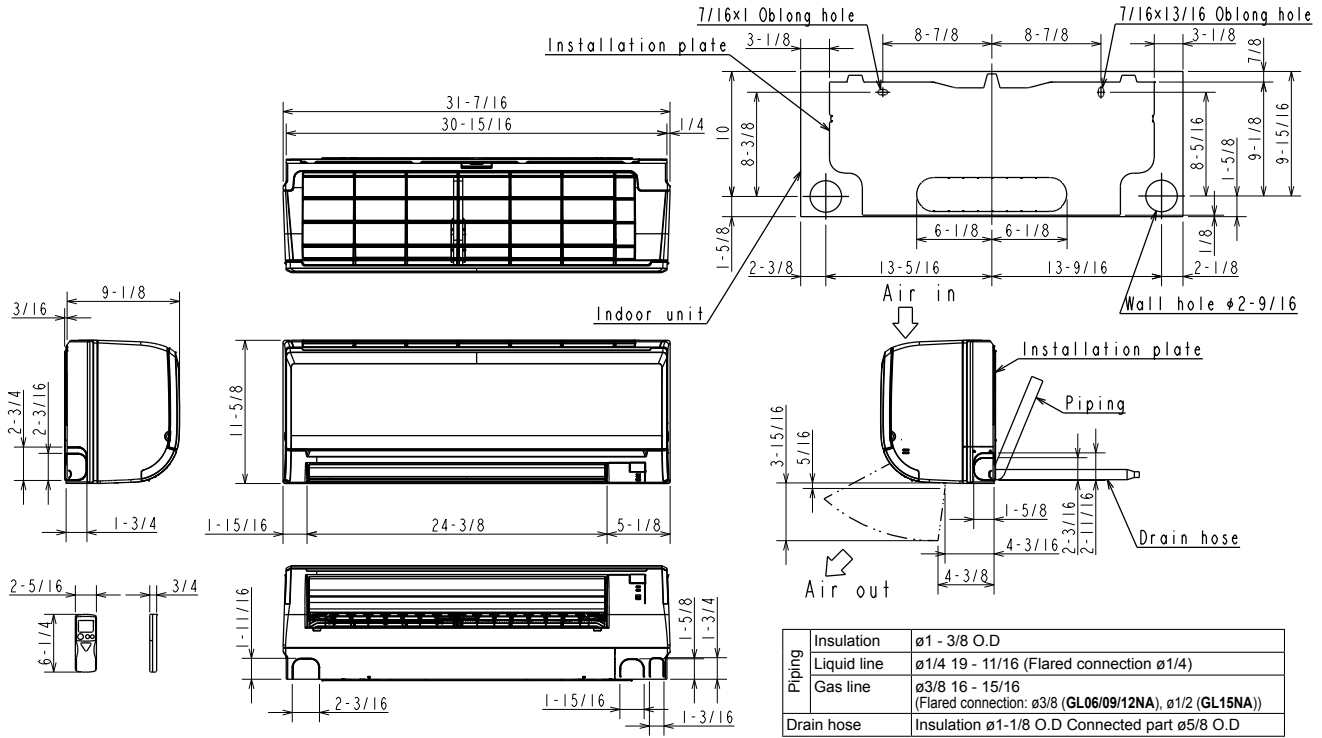
Refrigerant Piping (Flared)		
Liquid (High Pressure)	In.(mm)	1/4 (6.35)
Gas (Low Pressure)		3/8 (9.52)



# DIMENSIONS: MSZ-GL09NA-U1

## MSZ-GL09NA-U1

Unit: in. (mm)



1340 Satellite Boulevard, Suwanee, GA 30024  
Toll Free: 800-433-4822 www.mehvac.com



Job Name:	Date:
System Reference:	



Outdoor Unit: MXZ-5C42NAHZ

### ACCESSORIES

- Three-port Branch Box (PAC-MKA30BC)
- Five-port Branch Box (PAC-MKA50BC)
- Distribution Pipe for Flare Connection (MSDD-50AR; necessary for installing two branch boxes)
- Distribution Pipe for Brazed Connection (MSDD-50BR; necessary for installing two branch boxes)
- 3/8" x 1/2" Port Adapter (MAC-A454JP)
- 1/2" x 3/8" Port Adapter (MAC-A455JP)
- 1/2" x 5/8" Port Adapter (MAC-A456JP)
- 1/4" x 3/8" Port Adapter (PAC-493PI)
- 3/8" x 5/8" Port Adapter (PAC-SG76RJ)
- Airflow Guide (PAC-SH96SG-E)

(For data on specific indoor units, see the MXZ-C Technical and Service Manual.)

Specifications			Model Name
Unit Type			MXZ-5C42NAHZ
<b>Cooling*</b> (Non-ducted / Ducted)	Rated Capacity	Btu/h	42,000 / 42,000
	Capacity Range	Btu/h	6,000 - 42,000
	Rated Total Input	W	3,130 / 3,890
<b>Heating at 47°F*</b> (Non-ducted / Ducted)	Rated Capacity	Btu/h	48,000 / 48,000
	Capacity Range	Btu/h	7,200 - 48,000
	Rated Total Input	W	3,430 / 4,350
<b>Heating at 17°F*</b> (Non-ducted/Ducted)	Rated Capacity	Btu/h	35,800 / 36,600
	Maximum Capacity		48,000 / 48,000
	Rated Total Input	W	3,650 / 4,290
<b>Heating at 5°F*</b>	Maximum Capacity	Btu/h	48,000
<b>Energy Star®</b> (ENERGY STAR products are third-party certified by an EPA-recognized Certification Body.)			Yes
<b>Electrical Requirements</b>	<b>Power Supply</b>	<b>Voltage, Phase, Hertz</b>	208 / 230V, 1-Phase, 60 Hz
	<b>Recommended Fuse/Breaker Size</b>	<b>A</b>	50
	<b>MCA</b>	<b>A</b>	42
<b>Voltage</b>	<b>Indoor - Outdoor S1-S2</b>	<b>V</b>	AC 208 / 230
	<b>Indoor - Outdoor S2-S3</b>	<b>V</b>	DC ±24
<b>Compressor</b>			Hermetic
<b>Fan Motor (ECM)</b>		<b>F.L.A.</b>	0.4+0.4
<b>Sound Pressure Level</b>	<b>Cooling</b>	<b>dB(A)</b>	50
	<b>Heating</b>	<b>dB(A)</b>	54
<b>External Dimensions (H x W x D)</b>		<b>In / mm</b>	52-11/16 x 41-11/32 x 13+1 1338 x 1050 x 330+25
<b>Net Weight</b>		<b>Lbs / kg</b>	276 / 125
<b>External Finish</b>			Munsell No. 3Y 7.8/11
<b>Refrigerant Pipe Size O.D.</b>	<b>Liquid (High Pressure)</b>	<b>In / mm</b>	3/8 / 9.52
	<b>Gas (Low Pressure)</b>	<b>In / mm</b>	5/8 / 15.88
<b>Max. Refrigerant Line Length</b>		<b>Ft / m</b>	492 (150)
<b>Max. Piping Length between outdoor unit and branch boxes</b>		<b>Ft / m</b>	180 (55)
<b>Max. Piping Length after branch box</b>		<b>Ft / m</b>	82 (25)
<b>Max. Total Piping Length between branch boxes and indoor units</b>		<b>Ft / m</b>	311 (95)
<b>Max. Refrigerant Pipe Height Difference</b>	<b>If IDU is Above ODU</b>	<b>Ft / m</b>	131 (40)
	<b>If IDU is Below ODU</b>	<b>Ft / m</b>	164 (50)
<b>Connection Method</b>			Flared/Flared
<b>Refrigerant</b>			R410A

\* Rating Conditions per AHRI Standard:

Cooling | Indoor: 80° F (27° C) DB / 67° F (19° C) WB  
Cooling | Outdoor: 95° F (35° C) DB / 75° F (24° C) WB

Heating at 47°F | Indoor: 70° F (21° C) DB  
Heating at 47°F | Outdoor: 47° F (8° C) DB / 43° F (6° C) WB

Heating at 17° F | Indoor: 70° F (21° C) DB  
Heating at 17° F | Outdoor: 17° F (-8° C) DB / 15° F (-9° C) WB

# SPECIFICATIONS : MXZ-5C42NAHZ, contd.

**OPERATING RANGE:**

	Outdoor
Cooling	D.B 23 to 115°F [ D.B.-5 to 46°C ]*1
Heating	W.B. -13 to 59° F [ W.B. -25 to 15° C ]

\*1. D.B. 5 to 115° F [ D.B. -15 to 46° C ], when an optional Air Outlet Guide is installed.

**ENERGY EFFICIENCIES:**

Indoor Unit Type	SEER	EER	HSPF	COP @ 47°F	COP @ 17°F
<b>Non-ducted</b>	19.0	13.40	11.0	4.10	2.85
<b>Ducted and Non-ducted</b>	17.00	12.11	10.55	3.67	2.68
<b>Ducted</b>	15.0	10.80	10.1	3.23	2.50

**NOTES:**

- Minimum of two Indoor Units must be connected to the MXZ-5C42NAHZ.
- Minimum installed capacity cannot be less than 12,000 Btu/h.
- Total connected capacity must not exceed 130% of outdoor unit capacity.
- System can operate with only one Indoor Unit turned on.
- Information provided at 208/230V.
- For Reference:
  - MXZ-C Technical & Service Manual for detailed specifications and additional information per Indoor Unit Combination.
  - MXZ Series Multi-Zone Indoor/Outdoor Combination Table for allowed unit combinations.

**MVZ CONNECTION RULES:**

- Up to 2 MVZ's may be connected to this system\*.
- When 2 MVZ's are connected, no additional indoor units can be used\*.
- When 1 MVZ is connected, additional indoor units can be connected.
- When 1 MVZ is connected, total connected capacity must not exceed 130%.

\*No limitation to the number of units connected when the SPTB1 accessory is used, total connected capacity must not exceed 130% (refer to SPTB1 documentation for more information).

Notes:

# MXZ-5C42NAHZ SYSTEM DESIGN

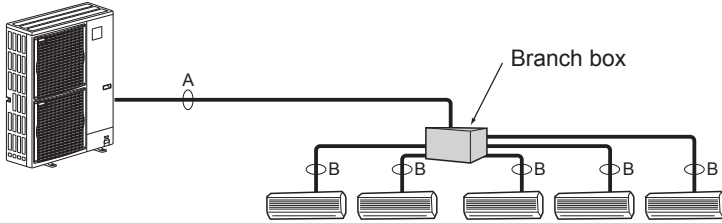
Outdoor unit		MXZ-5C42NAHZ	
		4.5HP	
		Cooling	42
		Heating	48
		Refrigerant R410A	
Connectable indoor unit	<b>Capacity</b>	Type 06 to Type 36	
		<b>Caution:</b> The indoor unit which rated capacity exceeds 36 kBTU/h (Type 36) can NOT be connected.	
	Number of units	2 to 5 units	
Total system wide capacity		29 to 130% of outdoor unit capacity (12 to 54.6 kBTU/h)	
Connectable branch box	Number of units	1 or 2 units	

Branch box	PAC-MKA50BC	PAC-MKA30BC
Number of branches (Indoor unit that can be connected)	5 branches (MAX. 5 units)	3 branches (MAX. 3 units)

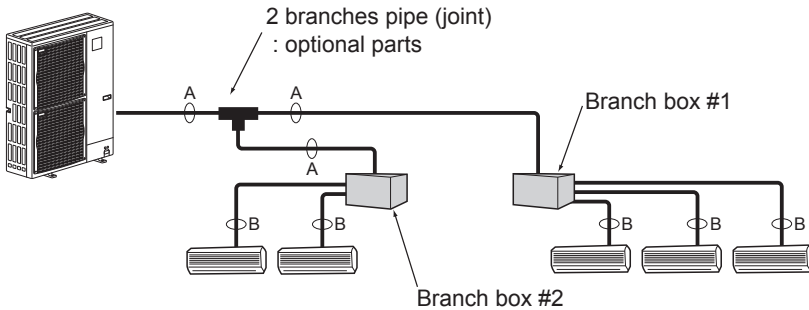
Note: A maximum of 2 branch boxes can be connected to 1 outdoor unit.

Branch Box Combinations	
Three-port	Five-port
1	0
0	1
1	1
2	0
0	2 (Up to 8 IDU)

- If Using One Branch Box  
Flare connection employed (No brazing)



- If Using Two Branch Boxes



- Installation procedure (2 branches pipe (joint))  
Refer to the installation manuals of MSDD-50AR-E and MSDD-50BR-E.

### Piping connection size

	A	B
Liquid	$\phi 9.52$ mm (3/8 inch)	The piping connection size differs according to the type and capacity of indoor units. Match the piping connection size of branch box with indoor unit. If the piping connection size of branch box does not match the piping connection size of indoor unit, use optional different-diameter (deformed) joints to the branch box side. (Connect deformed joint directly to the branch box side.)
Gas	$\phi 15.88$ mm (5/8 inch)	

# MXZ-5C42NAHZ COOLING AND HEATING CAPACITY AND CHARACTERISTICS

## 1. Method for obtaining system cooling and heating capacity:

To obtain the system cooling and heating capacity and the electrical characteristics of the outdoor unit, first add up the ratings of all the indoor units connected to the outdoor unit (see table below). For Standard Capacity Diagram, please refer to the MXZ-C Technical & Service Manual.

### (1) Capacity of indoor unit

	Model Number for indoor unit	Model 06	Model 09	Model 12	Model 15	Model 18	Model 24	Model 30	Model 36
M series	Model Capacity [kBtu/h]	6.0	9.0	12.0	14.0* <sup>1</sup> 15.0* <sup>2</sup>	17.2* <sup>3</sup> 18.0* <sup>4</sup>	22.5	—	—
P series		—	—	12.0	—	18.0	24.0	30.0	35.0
SEZ		—	8.1	11.5	14.1	17.2	—	—	—
SLZ		—	8.4	11.1	15.0	—	—	—	—
MVZ		—	—	12.0	—	18.0	24.0	30.0	36.0

\*1 The value is for MSZ-GE15NA.

\*2 The value is for MSZ-FH15NA.

\*3 The value is for MSZ-GE/FH18NA.

\*4 The value is for MSZ-FE18NA or MFZ-KA18NA.

### (2) Sample calculation

1 System assembled from indoor and outdoor unit (in this example the total capacity of the indoor units is greater than that of the outdoor unit)

- Outdoor unit MXZ-5C42NAHZ
- Indoor unit MSZ-GE09NA × 2 + MSZ-FH15NA × 2

2 According to the conditions in 1, the total capacity of the indoor unit will be: 9.0 × 2 + 15.0 × 2 = 48.0

3 The following figures are obtained from the 16.8 total capacity of indoor units, referring the standard capacity diagram in "4-3-3. MXZ-5C42NAHZ <cooling>" and "4-3-4. MXZ-5C42NAHZ <heating>".

Capacity (kBTU/h)		Outdoor unit power consumption (kW)		Outdoor unit current (A)/ 230 V	
Cooling	Heating	Cooling	Heating	Cooling	Heating
A 42.0	B 48.0	3.46	4.37	15.26	19.31

## 2. Method for obtaining the heating and cooling capacity of an indoor unit:

(1) The capacity of each indoor unit (kW) = the capacity A (or B) ×  $\frac{\text{model capacity}}{\text{total model capacity of all indoor units}}$

(2) Sample calculation (using the system described above in 4-1-1. (2) ):

#### During cooling:

- The total model capacity of the indoor unit is:  
9.0 × 2 + 15.0 × 2 = 48.0 kBTU/h  
Therefore, the capacity of MSZ-GE09NA and MSZ-FH15NA will be calculated as follows by using the formula in 4-1-2. (1):

$$\text{Model 09} = 42.0 \times \frac{9.0}{48.0} = 7.88 \text{ kBTU/h}$$

$$\text{Model 15} = 42.0 \times \frac{15.0}{48.0} = 13.13 \text{ kBTU/h}$$

#### During heating:

- The total model capacity of indoor unit is:  
10.9 × 2 + 18.0 × 2 = 57.8 kBTU/h  
Therefore, the capacity of MSZ-GE09NA and MSZ-FH15NA will be calculated as follows by using the formula in 4-1-2. (1):

$$\text{Model 25} = 48.0 \times \frac{10.9}{57.8} = 9.05 \text{ kBTU/h}$$

$$\text{Model 50} = 48.0 \times \frac{18.0}{57.8} = 14.95 \text{ kBTU/h}$$

# MXZ-5C42NAHZ OPERATIONAL PERFORMANCE

**NON-DUCTED:**

# of indoor unit	Total Nominal Capacity (x1000 Btu/h)	Total Indoor Unit Capacity (Btu/h)	Operational Performance for Indoor Unit Combinations (Unit A + Unit B + Unit C + Unit D + Unit E)	Cooling Capacity Range (Btu/h)				
				Heating Capacity Range (Btu/h)				
				Unit A	Unit B	Unit C	Unit D	Unit E
1	6	6,000	6	6,000	-	-	-	-
		7,200		7,200	-	-	-	-
1	9	9,000	9	9,000	-	-	-	-
		10,800		10,800	-	-	-	-
1	12	12,000	12	12,000	-	-	-	-
		14,400		14,400	-	-	-	-
1	15	15,000	15	15,000	-	-	-	-
		18,000		18,000	-	-	-	-
1	18	18,000	18	18,000	-	-	-	-
		21,600		21,600	-	-	-	-
1	24	24,000	24	24,000	-	-	-	-
		28,800		28,800	-	-	-	-
1	30	30,000	30	30,000	-	-	-	-
		36,900		36,900	-	-	-	-
1	36	36,000	36	36,000	-	-	-	-
		45,000		45,000	-	-	-	-
2	12	12,000	6 + 6	6,000	6,000	-	-	-
		14,400		7,200	7,200	-	-	-
2	15	15,000	6 + 9	6,000	9,000	-	-	-
		18,000		7,200	10,800	-	-	-
2	18	18,000	6 + 12	6,000	12,000	-	-	-
		21,600		7,200	14,400	-	-	-
2	21	21,000	6 + 15	6,000	15,000	-	-	-
		25,200		7,200	18,000	-	-	-
2	24	24,000	6 + 18	6,000	18,000	-	-	-
		28,800		7,200	21,600	-	-	-
2	30	30,000	6 + 24	6,000	24,000	-	-	-
		36,900		7,400	29,500	-	-	-
2	36	36,000	6 + 30	6,000	30,000	-	-	-
		45,000		7,300	37,700	-	-	-
2	42	42,000	6 + 36	6,000	36,000	-	-	-
		48,000		6,600	41,400	-	-	-
2	18	18,000	9 + 9	9,000	9,000	-	-	-
		21,600		10,800	10,800	-	-	-
2	21	21,000	9 + 12	9,000	12,000	-	-	-
		25,200		10,800	14,400	-	-	-
2	24	24,000	9 + 15	9,000	15,000	-	-	-
		28,800		10,800	18,000	-	-	-
2	27	27,000	9 + 18	9,000	18,000	-	-	-
		32,800		10,900	21,900	-	-	-
2	33	33,000	9 + 24	9,000	24,000	-	-	-
		40,900		11,200	29,700	-	-	-
2	39	39,000	9 + 30	9,000	30,000	-	-	-
		46,500		10,500	36,000	-	-	-
2	45	42,000	9 + 36	8,400	33,600	-	-	-
		48,000		9,300	38,700	-	-	-
2	24	24,000	12 + 12	12,000	12,000	-	-	-
		28,800		14,400	14,400	-	-	-
2	27	27,000	12 + 15	12,000	15,000	-	-	-
		32,800		14,600	18,200	-	-	-
2	30	30,000	12 + 18	12,000	18,000	-	-	-
		36,900		14,800	22,100	-	-	-
2	36	36,000	12 + 24	12,000	24,000	-	-	-
		45,000		15,000	30,000	-	-	-
2	42	42,000	12 + 30	12,000	30,000	-	-	-
		48,000		13,500	34,500	-	-	-
2	48	42,000	12 + 36	10,500	31,500	-	-	-
		48,000		11,600	36,400	-	-	-
2	30	30,000	15 + 15	15,000	15,000	-	-	-
		36,900		18,500	18,500	-	-	-

# MXZ-5C42NAHZ OPERATIONAL PERFORMANCE, contd.

**NON-DUCTED:**

# of indoor unit	Total Nominal Capacity (x1000 Btu/h)	Total Indoor Unit Capacity (Btu/h)	Operational Performance for Indoor Unit Combinations (Unit A + Unit B + Unit C + Unit D + Unit E)	Cooling Capacity Range (Btu/h)				
				Heating Capacity Range (Btu/h)				
				Unit A	Unit B	Unit C	Unit D	Unit E
2	33	33,000	15 + 18	15,000	18,000	-	-	-
		40,900		18,600	22,300	-	-	-
2	39	39,000	15 + 24	15,000	24,000	-	-	-
		46,500		17,900	28,600	-	-	-
2	45	42,000	15 + 30	14,000	28,000	-	-	-
		48,000		15,700	32,300	-	-	-
2	51	42,000	15 + 36	12,400	29,600	-	-	-
		48,000		13,700	34,300	-	-	-
2	36	36,000	18 + 18	18,000	18,000	-	-	-
		45,000		22,500	22,500	-	-	-
2	42	42,000	18 + 24	18,000	24,000	-	-	-
		48,000		20,600	27,400	-	-	-
2	48	42,000	18 + 30	15,800	26,300	-	-	-
		48,000		17,700	30,300	-	-	-
2	54	42,000	18 + 36	14,000	28,000	-	-	-
		48,000		15,600	32,400	-	-	-
2	48	42,000	24 + 24	21,000	21,000	-	-	-
		48,000		24,000	24,000	-	-	-
2	54	42,000	24 + 30	18,700	23,300	-	-	-
		48,000		21,000	27,000	-	-	-
3	18	18,000	6 + 6 + 6	6,000	6,000	6,000	-	-
		21,600		7,200	7,200	7,200	-	-
3	21	21,000	6 + 6 + 9	6,000	6,000	9,000	-	-
		25,200		7,200	7,200	10,800	-	-
3	24	24,000	6 + 6 + 12	6,000	6,000	12,000	-	-
		28,800		7,200	7,200	14,400	-	-
3	27	27,000	6 + 6 + 15	6,000	6,000	15,000	-	-
		32,800		7,300	7,300	18,200	-	-
3	30	30,000	6 + 6 + 18	6,000	6,000	18,000	-	-
		36,900		7,400	7,400	22,100	-	-
3	36	36,000	6 + 6 + 24	6,000	6,000	24,000	-	-
		45,000		7,500	7,500	30,000	-	-
3	42	42,000	6 + 6 + 30	6,000	6,000	30,000	-	-
		48,000		6,700	6,700	34,500	-	-
3	48	42,000	6 + 6 + 36	5,300	5,300	31,500	-	-
		48,000		5,800	5,800	36,400	-	-
3	24	24,000	6 + 9 + 9	6,000	9,000	9,000	-	-
		28,800		7,200	10,800	10,800	-	-
3	27	27,000	6 + 9 + 12	6,000	9,000	12,000	-	-
		32,800		7,300	10,900	14,600	-	-
3	30	30,000	6 + 9 + 15	6,000	9,000	15,000	-	-
		36,900		7,400	11,100	18,500	-	-
3	33	33,000	6 + 9 + 18	6,000	9,000	18,000	-	-
		40,900		7,400	11,200	22,300	-	-
3	39	39,000	6 + 9 + 24	6,000	9,000	24,000	-	-
		46,500		7,200	10,700	28,600	-	-
3	45	42,000	6 + 9 + 30	5,600	8,400	28,000	-	-
		48,000		6,300	9,400	32,300	-	-
3	51	42,000	6 + 9 + 36	4,900	7,400	29,600	-	-
		48,000		5,500	8,200	34,300	-	-
3	30	30,000	6 + 12 + 12	6,000	12,000	12,000	-	-
		36,900		7,400	14,800	14,800	-	-
3	33	33,000	6 + 12 + 15	6,000	12,000	15,000	-	-
		40,900		7,400	14,900	18,600	-	-
3	36	36,000	6 + 12 + 18	6,000	12,000	18,000	-	-
		45,000		7,500	15,000	22,500	-	-
3	42	42,000	6 + 12 + 24	6,000	12,000	24,000	-	-
		48,000		6,900	13,700	27,400	-	-
3	48	42,000	6 + 12 + 30	5,300	10,500	26,300	-	-
		48,000		5,900	11,800	30,300	-	-

# MXZ-5C42NAHZ OPERATIONAL PERFORMANCE, contd.

**NON-DUCTED:**

# of indoor unit	Total Nominal Capacity (x1000 Btu/h)	Total Indoor Unit Capacity (Btu/h)	Operational Performance for Indoor Unit Combinations (Unit A + Unit B + Unit C + Unit D + Unit E)	Cooling Capacity Range (Btu/h)				
				Heating Capacity Range (Btu/h)				
				Unit A	Unit B	Unit C	Unit D	Unit E
3	54	42,000	6 + 12 + 36	4,700	9,300	28,000	-	-
		48,000		5,200	10,400	32,400	-	-
3	36	36,000	6 + 15 + 15	6,000	15,000	15,000	-	-
		45,000		7,500	18,800	18,800	-	-
3	39	39,000	6 + 15 + 18	6,000	15,000	18,000	-	-
		46,500		7,200	17,900	21,500	-	-
3	45	42,000	6 + 15 + 24	5,600	14,000	22,400	-	-
		48,000		6,400	16,000	25,600	-	-
3	51	42,000	6 + 15 + 30	4,900	12,400	24,700	-	-
		48,000		5,600	13,900	28,500	-	-
3	42	42,000	6 + 18 + 18	6,000	18,000	18,000	-	-
		48,000		6,900	20,600	20,600	-	-
3	48	42,000	6 + 18 + 24	5,300	15,800	21,000	-	-
		48,000		6,000	18,000	24,000	-	-
3	54	42,000	6 + 18 + 30	4,700	14,000	23,300	-	-
		48,000		5,300	15,800	27,000	-	-
3	54	42,000	6 + 24 + 24	4,700	18,700	18,700	-	-
		48,000		5,300	21,300	21,300	-	-
3	27	27,000	9 + 9 + 9	9,000	9,000	9,000	-	-
		32,800		10,900	10,900	10,900	-	-
3	30	30,000	9 + 9 + 12	9,000	9,000	12,000	-	-
		36,900		11,100	11,100	14,800	-	-
3	33	33,000	9 + 9 + 15	9,000	9,000	15,000	-	-
		40,900		11,200	11,200	18,600	-	-
3	36	36,000	9 + 9 + 18	9,000	9,000	18,000	-	-
		45,000		11,300	11,300	22,500	-	-
3	42	42,000	9 + 9 + 24	9,000	9,000	24,000	-	-
		48,000		10,300	10,300	27,400	-	-
3	48	42,000	9 + 9 + 30	7,900	7,900	26,300	-	-
		48,000		8,900	8,900	30,300	-	-
3	54	42,000	9 + 9 + 36	7,000	7,000	28,000	-	-
		48,000		7,800	7,800	32,400	-	-
3	33	33,000	9 + 12 + 12	9,000	12,000	12,000	-	-
		40,900		11,200	14,900	14,900	-	-
3	36	36,000	9 + 12 + 15	9,000	12,000	15,000	-	-
		45,000		11,300	15,000	18,800	-	-
3	39	39,000	9 + 12 + 18	9,000	12,000	18,000	-	-
		46,500		10,700	14,300	21,500	-	-
3	45	42,000	9 + 12 + 24	8,400	11,200	22,400	-	-
		48,000		9,600	12,800	25,600	-	-
3	51	42,000	9 + 12 + 30	7,400	9,900	24,700	-	-
		48,000		8,300	11,100	28,500	-	-
3	39	39,000	9 + 15 + 15	9,000	15,000	15,000	-	-
		46,500		10,700	17,900	17,900	-	-
3	42	42,000	9 + 15 + 18	9,000	15,000	18,000	-	-
		48,000		10,300	17,100	20,600	-	-
3	48	42,000	9 + 15 + 24	7,900	13,100	21,000	-	-
		48,000		9,000	15,000	24,000	-	-
3	54	42,000	9 + 15 + 30	7,000	11,700	23,300	-	-
		48,000		7,900	13,200	27,000	-	-
3	45	42,000	9 + 18 + 18	8,400	16,800	16,800	-	-
		48,000		9,600	19,200	19,200	-	-
3	51	42,000	9 + 18 + 24	7,400	14,800	19,800	-	-
		48,000		8,500	16,900	22,600	-	-
3	36	36,000	12 + 12 + 12	12,000	12,000	12,000	-	-
		45,000		15,000	15,000	15,000	-	-
3	39	39,000	12 + 12 + 15	12,000	12,000	15,000	-	-
		46,500		14,300	14,300	17,900	-	-
3	42	42,000	12 + 12 + 18	12,000	12,000	18,000	-	-
		48,000		13,700	13,700	20,600	-	-



# MXZ-5C42NAHZ OPERATIONAL PERFORMANCE, contd.

**NON-DUCTED:**

# of indoor unit	Total Nominal Capacity (x1000 Btu/h)	Total Indoor Unit Capacity (Btu/h)	Operational Performance for Indoor Unit Combinations (Unit A + Unit B + Unit C + Unit D + Unit E)	Cooling Capacity Range (Btu/h)				
				Heating Capacity Range (Btu/h)				
				Unit A	Unit B	Unit C	Unit D	Unit E
3	48	42,000	12 + 12 + 24	10,500	10,500	21,000	-	-
		48,000		12,000	12,000	24,000	-	-
3	54	42,000	12 + 12 + 30	9,300	9,300	23,300	-	-
		48,000		10,500	10,500	27,000	-	-
3	42	42,000	12 + 15 + 15	12,000	15,000	15,000	-	-
		48,000		13,700	17,100	17,100	-	-
3	45	42,000	12 + 15 + 18	11,200	14,000	16,800	-	-
		48,000		12,800	16,000	19,200	-	-
3	51	42,000	12 + 15 + 24	9,900	12,400	19,800	-	-
		48,000		11,300	14,100	22,600	-	-
3	48	42,000	12 + 18 + 18	10,500	15,800	15,800	-	-
		48,000		12,000	18,000	18,000	-	-
3	54	42,000	12 + 18 + 24	9,300	14,000	18,700	-	-
		48,000		10,700	16,000	21,300	-	-
3	45	42,000	15 + 15 + 15	14,000	14,000	14,000	-	-
		48,000		16,000	16,000	16,000	-	-
3	48	42,000	15 + 15 + 18	13,100	13,100	15,800	-	-
		48,000		15,000	15,000	18,000	-	-
3	54	42,000	15 + 15 + 24	11,700	11,700	18,700	-	-
		48,000		13,300	13,300	21,300	-	-
3	51	42,000	15 + 18 + 18	12,400	14,800	14,800	-	-
		48,000		14,100	16,900	16,900	-	-
3	54	42,000	18 + 18 + 18	14,000	14,000	14,000	-	-
		48,000		16,000	16,000	16,000	-	-
4	24	24,000	6 + 6 + 6 + 6	6,000	6,000	6,000	6,000	-
		28,800		7,200	7,200	7,200	7,200	-
4	27	27,000	6 + 6 + 6 + 9	6,000	6,000	6,000	9,000	-
		32,800		7,300	7,300	7,300	10,900	-
4	30	30,000	6 + 6 + 6 + 12	6,000	6,000	6,000	12,000	-
		36,900		7,400	7,400	7,400	14,800	-
4	33	33,000	6 + 6 + 6 + 15	6,000	6,000	6,000	15,000	-
		40,900		7,400	7,400	7,400	18,600	-
4	36	36,000	6 + 6 + 6 + 18	6,000	6,000	6,000	18,000	-
		45,000		7,500	7,500	7,500	22,500	-
4	42	42,000	6 + 6 + 6 + 24	6,000	6,000	6,000	24,000	-
		48,000		6,900	6,900	6,900	27,400	-
4	48	42,000	6 + 6 + 6 + 30	5,300	5,300	5,300	26,300	-
		48,000		5,900	5,900	5,900	30,300	-
4	54	42,000	6 + 6 + 6 + 36	4,700	4,700	4,700	28,000	-
		48,000		5,200	5,200	5,200	32,400	-
4	30	30,000	6 + 6 + 9 + 9	6,000	6,000	9,000	9,000	-
		36,900		7,400	7,400	11,100	11,100	-
4	33	33,000	6 + 6 + 9 + 12	6,000	6,000	9,000	12,000	-
		40,900		7,400	7,400	11,200	14,900	-
4	36	36,000	6 + 6 + 9 + 15	6,000	6,000	9,000	15,000	-
		45,000		7,500	7,500	11,300	18,800	-
4	39	39,000	6 + 6 + 9 + 18	6,000	6,000	9,000	18,000	-
		46,500		7,200	7,200	10,700	21,500	-
4	45	42,000	6 + 6 + 9 + 24	5,600	5,600	8,400	22,400	-
		48,000		6,400	6,400	9,600	25,600	-
4	51	42,000	6 + 6 + 9 + 30	4,900	4,900	7,400	24,700	-
		48,000		5,600	5,600	8,300	28,500	-
4	36	36,000	6 + 6 + 12 + 12	6,000	6,000	12,000	12,000	-
		45,000		7,500	7,500	15,000	15,000	-
4	39	39,000	6 + 6 + 12 + 15	6,000	6,000	12,000	15,000	-
		46,500		7,200	7,200	14,300	17,900	-
4	42	42,000	6 + 6 + 12 + 18	6,000	6,000	12,000	18,000	-
		48,000		6,900	6,900	13,700	20,600	-
4	48	42,000	6 + 6 + 12 + 24	5,300	5,300	10,500	21,000	-
		48,000		6,000	6,000	12,000	24,000	-
4	54	42,000	6 + 6 + 12 + 30	4,700	4,700	9,300	23,300	-
		48,000		5,300	5,300	10,500	27,000	-

# MXZ-5C42NAHZ OPERATIONAL PERFORMANCE, contd.

**NON-DUCTED:**

# of indoor unit	Total Nominal Capacity (x1000 Btu/h)	Total Indoor Unit Capacity (Btu/h)	Operational Performance for Indoor Unit Combinations (Unit A + Unit B + Unit C + Unit D + Unit E)	Cooling Capacity Range (Btu/h)				
				Heating Capacity Range (Btu/h)				
				Unit A	Unit B	Unit C	Unit D	Unit E
4	42	42,000	6 + 6 + 15 + 15	6,000	6,000	15,000	15,000	-
		48,000		6,900	6,900	17,100	17,100	-
4	45	42,000	6 + 6 + 15 + 18	5,600	5,600	14,000	16,800	-
		48,000		6,400	6,400	16,000	19,200	-
4	51	42,000	6 + 6 + 15 + 24	4,900	4,900	12,400	19,800	-
		48,000		5,600	5,600	14,100	22,600	-
4	48	42,000	6 + 6 + 18 + 18	5,300	5,300	15,800	15,800	-
		48,000		6,000	6,000	18,000	18,000	-
4	54	42,000	6 + 6 + 18 + 24	4,700	4,700	14,000	18,700	-
		48,000		5,300	5,300	16,000	21,300	-
4	33	33,000	6 + 9 + 9 + 9	6,000	9,000	9,000	9,000	-
		40,900		7,400	11,200	11,200	11,200	-
4	36	36,000	6 + 9 + 9 + 12	6,000	9,000	9,000	12,000	-
		45,000		7,500	11,300	11,300	15,000	-
4	39	39,000	6 + 9 + 9 + 15	6,000	9,000	9,000	15,000	-
		46,500		7,200	10,700	10,700	17,900	-
4	42	42,000	6 + 9 + 9 + 18	6,000	9,000	9,000	18,000	-
		48,000		6,900	10,300	10,300	20,600	-
4	48	42,000	6 + 9 + 9 + 24	5,300	7,900	7,900	21,000	-
		48,000		6,000	9,000	9,000	24,000	-
4	54	42,000	6 + 9 + 9 + 30	4,700	7,000	7,000	23,300	-
		48,000		5,300	7,900	7,900	27,000	-
4	39	39,000	6 + 9 + 12 + 12	6,000	9,000	12,000	12,000	-
		46,500		7,200	10,700	14,300	14,300	-
4	42	42,000	6 + 9 + 12 + 15	6,000	9,000	12,000	15,000	-
		48,000		6,900	10,300	13,700	17,100	-
4	45	42,000	6 + 9 + 12 + 18	5,600	8,400	11,200	16,800	-
		48,000		6,400	9,600	12,800	19,200	-
4	51	42,000	6 + 9 + 12 + 24	4,900	7,400	9,900	19,800	-
		48,000		5,600	8,500	11,300	22,600	-
4	45	42,000	6 + 9 + 15 + 15	5,600	8,400	14,000	14,000	-
		48,000		6,400	9,600	16,000	16,000	-
4	48	42,000	6 + 9 + 15 + 18	5,300	7,900	13,100	15,800	-
		48,000		6,000	9,000	15,000	18,000	-
4	54	42,000	6 + 9 + 15 + 24	4,700	7,000	11,700	18,700	-
		48,000		5,300	8,000	13,300	21,300	-
4	51	42,000	6 + 9 + 18 + 18	4,900	7,400	14,800	14,800	-
		48,000		5,600	8,500	16,900	16,900	-
4	42	42,000	6 + 12 + 12 + 12	6,000	12,000	12,000	12,000	-
		48,000		6,900	13,700	13,700	13,700	-
4	45	42,000	6 + 12 + 12 + 15	5,600	11,200	11,200	14,000	-
		48,000		6,400	12,800	12,800	16,000	-
4	48	42,000	6 + 12 + 12 + 18	5,300	10,500	10,500	15,800	-
		48,000		6,000	12,000	12,000	18,000	-
4	54	42,000	6 + 12 + 12 + 24	4,700	9,300	9,300	18,700	-
		48,000		5,300	10,700	10,700	21,300	-
4	51	42,000	6 + 15 + 15 + 15	4,900	12,400	12,400	12,400	-
		48,000		5,600	14,100	14,100	14,100	-
4	54	42,000	6 + 15 + 15 + 18	4,700	11,700	11,700	14,000	-
		48,000		5,300	13,300	13,300	16,000	-
4	36	36,000	9 + 9 + 9 + 9	9,000	9,000	9,000	9,000	-
		45,000		11,300	11,300	11,300	11,300	-
4	39	39,000	9 + 9 + 9 + 12	9,000	9,000	9,000	12,000	-
		46,500		10,700	10,700	10,700	14,300	-
4	42	42,000	9 + 9 + 9 + 15	9,000	9,000	9,000	15,000	-
		48,000		10,300	10,300	10,300	17,100	-
4	45	42,000	9 + 9 + 9 + 18	8,400	8,400	8,400	16,800	-
		48,000		9,600	9,600	9,600	19,200	-
4	51	42,000	9 + 9 + 9 + 24	7,400	7,400	7,400	19,800	-
		48,000		8,500	8,500	8,500	22,600	-
4	42	42,000	9 + 9 + 12 + 12	9,000	9,000	12,000	12,000	-
		48,000		10,300	10,300	13,700	13,700	-

# MXZ-5C42NAHZ OPERATIONAL PERFORMANCE, contd.

**NON-DUCTED:**

# of indoor unit	Total Nominal Capacity (x1000 Btu/h)	Total Indoor Unit Capacity (Btu/h)	Operational Performance for Indoor Unit Combinations (Unit A + Unit B + Unit C + Unit D + Unit E)	Cooling Capacity Range (Btu/h)				
				Heating Capacity Range (Btu/h)				
				Unit A	Unit B	Unit C	Unit D	Unit E
4	45	42,000	9 + 9 + 12 + 15	8,400	8,400	11,200	14,000	-
		48,000		9,600	9,600	12,800	16,000	-
4	48	42,000	9 + 9 + 12 + 18	7,900	7,900	10,500	15,800	-
		48,000		9,000	9,000	12,000	18,000	-
4	54	42,000	9 + 9 + 12 + 24	7,000	7,000	9,300	18,700	-
		48,000		8,000	8,000	10,700	21,300	-
4	45	42,000	9 + 12 + 12 + 12	8,400	11,200	11,200	11,200	-
		48,000		9,600	12,800	12,800	12,800	-
4	48	42,000	9 + 12 + 12 + 15	7,900	10,500	10,500	13,100	-
		48,000		9,000	12,000	12,000	15,000	-
4	51	42,000	9 + 12 + 12 + 18	7,400	9,900	9,900	14,800	-
		48,000		8,500	11,300	11,300	16,900	-
4	48	42,000	12 + 12 + 12 + 12	10,500	10,500	10,500	10,500	-
		48,000		12,000	12,000	12,000	12,000	-
4	51	42,000	12 + 12 + 12 + 15	9,900	9,900	9,900	12,400	-
		48,000		11,300	11,300	11,300	14,100	-
4	54	42,000	12 + 12 + 15 + 15	9,300	9,300	11,700	11,700	-
		48,000		10,700	10,700	13,300	13,300	-
5	30	30,000	6 + 6 + 6 + 6 + 6	6,000	6,000	6,000	6,000	6,000
		36,900		7,400	7,400	7,400	7,400	7,400
5	33	33,000	6 + 6 + 6 + 6 + 9	6,000	6,000	6,000	6,000	9,000
		40,900		7,400	7,400	7,400	7,400	11,200
5	36	36,000	6 + 6 + 6 + 6 + 12	6,000	6,000	6,000	6,000	12,000
		45,000		7,500	7,500	7,500	7,500	15,000
5	39	39,000	6 + 6 + 6 + 6 + 15	6,000	6,000	6,000	6,000	15,000
		46,500		7,200	7,200	7,200	7,200	17,900
5	42	42,000	6 + 6 + 6 + 6 + 18	6,000	6,000	6,000	6,000	18,000
		48,000		6,900	6,900	6,900	6,900	20,600
5	48	42,000	6 + 6 + 6 + 6 + 24	5,300	5,300	5,300	5,300	21,000
		48,000		6,000	6,000	6,000	6,000	24,000
5	54	42,000	6 + 6 + 6 + 6 + 30	4,700	4,700	4,700	4,700	23,300
		48,000		5,300	5,300	5,300	5,300	27,000
5	36	36,000	6 + 6 + 6 + 9 + 9	6,000	6,000	6,000	9,000	9,000
		45,000		7,500	7,500	7,500	11,300	11,300
5	39	39,000	6 + 6 + 6 + 9 + 12	6,000	6,000	6,000	9,000	12,000
		46,500		7,200	7,200	7,200	10,700	14,300
5	42	42,000	6 + 6 + 6 + 9 + 15	6,000	6,000	6,000	9,000	15,000
		48,000		6,900	6,900	6,900	10,300	17,100
5	45	42,000	6 + 6 + 6 + 9 + 18	5,600	5,600	5,600	8,400	16,800
		48,000		6,400	6,400	6,400	9,600	19,200
5	51	42,000	6 + 6 + 6 + 9 + 24	4,900	4,900	4,900	7,400	19,800
		48,000		5,600	5,600	5,600	8,500	22,600
5	42	42,000	6 + 6 + 6 + 12 + 12	6,000	6,000	6,000	12,000	12,000
		48,000		6,900	6,900	6,900	13,700	13,700
5	45	42,000	6 + 6 + 6 + 12 + 15	5,600	5,600	5,600	11,200	14,000
		48,000		6,400	6,400	6,400	12,800	16,000
5	48	42,000	6 + 6 + 6 + 12 + 18	5,300	5,300	5,300	10,500	15,800
		48,000		6,000	6,000	6,000	12,000	18,000
5	54	42,000	6 + 6 + 6 + 12 + 24	4,700	4,700	4,700	9,300	18,700
		48,000		5,300	5,300	5,300	10,700	21,300
5	48	42,000	6 + 6 + 6 + 15 + 15	5,300	5,300	5,300	13,100	13,100
		48,000		6,000	6,000	6,000	15,000	15,000
5	51	42,000	6 + 6 + 6 + 15 + 18	4,900	4,900	4,900	12,400	14,800
		48,000		5,600	5,600	5,600	14,100	16,900
5	54	42,000	6 + 6 + 6 + 18 + 18	4,700	4,700	4,700	14,000	14,000
		48,000		5,300	5,300	5,300	16,000	16,000
5	39	39,000	6 + 6 + 9 + 9 + 9	6,000	6,000	9,000	9,000	9,000
		46,500		7,200	7,200	10,700	10,700	10,700
5	42	42,000	6 + 6 + 9 + 9 + 12	6,000	6,000	9,000	9,000	12,000
		48,000		6,900	6,900	10,300	10,300	13,700
5	45	42,000	6 + 6 + 9 + 9 + 15	5,600	5,600	8,400	8,400	14,000
		48,000		6,400	6,400	9,600	9,600	16,000

# MXZ-5C42NAHZ OPERATIONAL PERFORMANCE, contd.

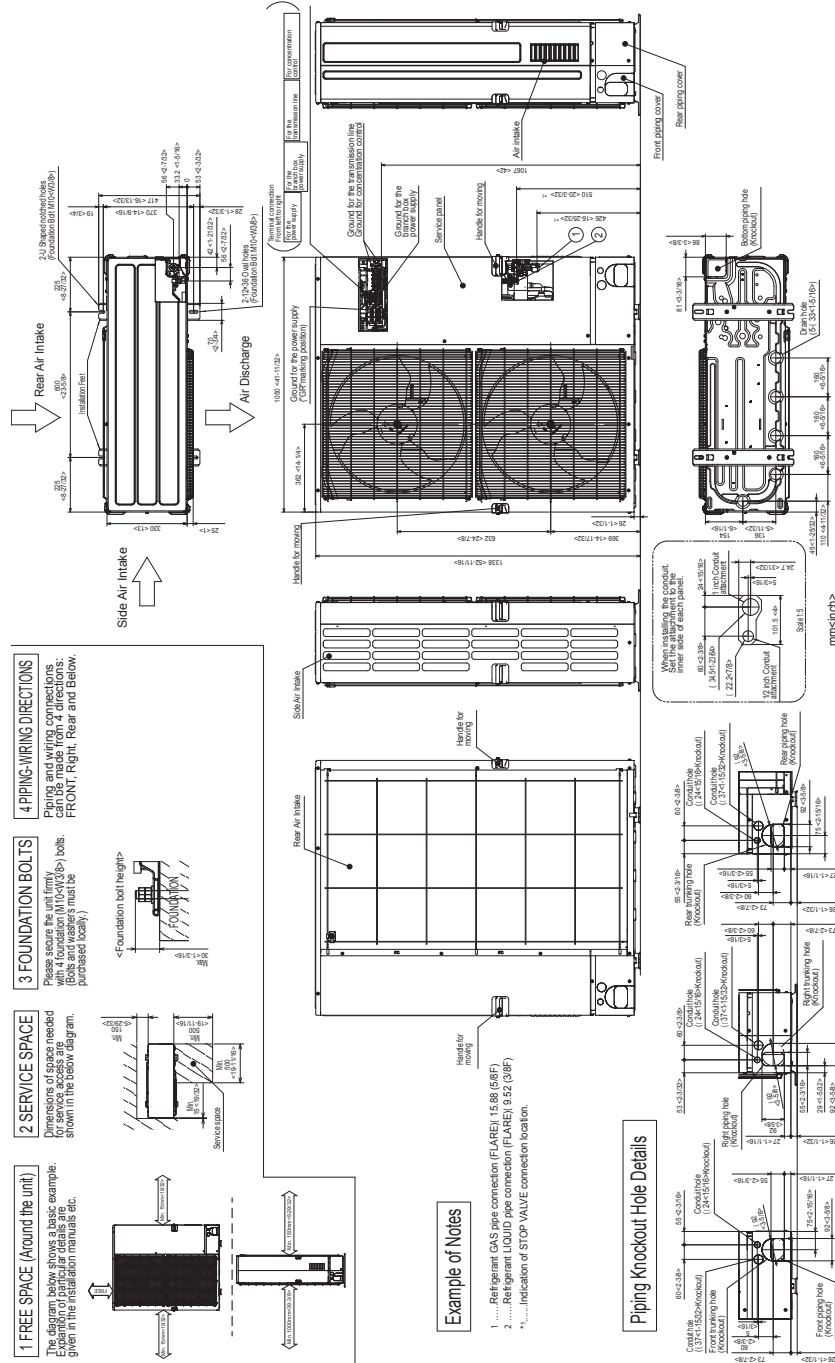
**NON-DUCTED:**

# of indoor unit	Total Nominal Capacity (x1000 Btu/h)	Total Indoor Unit Capacity (Btu/h)	Operational Performance for Indoor Unit Combinations (Unit A + Unit B + Unit C + Unit D + Unit E)	Cooling Capacity Range (Btu/h)				
				Heating Capacity Range (Btu/h)				
				Unit A	Unit B	Unit C	Unit D	Unit E
5	48	42,000	6 + 6 + 9 + 9 + 18	5,300	5,300	7,900	7,900	15,800
		48,000		6,000	6,000	9,000	9,000	18,000
5	54	42,000	6 + 6 + 9 + 9 + 24	4,700	4,700	7,000	7,000	18,700
		48,000		5,300	5,300	8,000	8,000	21,300
5	45	42,000	6 + 6 + 9 + 12 + 12	5,600	5,600	8,400	11,200	11,200
		48,000		6,400	6,400	9,600	12,800	12,800
5	48	42,000	6 + 6 + 9 + 12 + 15	5,300	5,300	7,900	10,500	13,100
		48,000		6,000	6,000	9,000	12,000	15,000
5	51	42,000	6 + 6 + 9 + 12 + 18	4,900	4,900	7,400	9,900	14,800
		48,000		5,600	5,600	8,500	11,300	16,900
5	51	42,000	6 + 6 + 9 + 15 + 15	4,900	4,900	7,400	12,400	12,400
		48,000		5,600	5,600	8,500	14,100	14,100
5	54	42,000	6 + 6 + 9 + 15 + 18	4,700	4,700	7,000	11,700	14,000
		48,000		5,300	5,300	8,000	13,300	16,000
5	48	42,000	6 + 6 + 12 + 12 + 12	5,300	5,300	10,500	10,500	10,500
		48,000		6,000	6,000	12,000	12,000	12,000
5	51	42,000	6 + 6 + 12 + 12 + 15	4,900	4,900	9,900	9,900	12,400
		48,000		5,600	5,600	11,300	11,300	14,100
5	54	42,000	6 + 6 + 12 + 12 + 18	4,700	4,700	9,300	9,300	14,000
		48,000		5,300	5,300	10,700	10,700	16,000
5	54	42,000	6 + 6 + 12 + 15 + 15	4,700	4,700	9,300	11,700	11,700
		48,000		5,300	5,300	10,700	13,300	13,300
5	42	42,000	6 + 9 + 9 + 9 + 9	6,000	9,000	9,000	9,000	9,000
		48,000		6,900	10,300	10,300	10,300	10,300
5	45	42,000	6 + 9 + 9 + 9 + 12	5,600	8,400	8,400	8,400	11,200
		48,000		6,400	9,600	9,600	9,600	12,800
5	48	42,000	6 + 9 + 9 + 9 + 15	5,300	7,900	7,900	7,900	13,100
		48,000		6,000	9,000	9,000	9,000	15,000
5	51	42,000	6 + 9 + 9 + 9 + 18	4,900	7,400	7,400	7,400	14,800
		48,000		5,600	8,500	8,500	8,500	16,900
5	48	42,000	6 + 9 + 9 + 12 + 12	5,300	7,900	7,900	10,500	10,500
		48,000		6,000	9,000	9,000	12,000	12,000
5	51	42,000	6 + 9 + 9 + 12 + 15	4,900	7,400	7,400	9,900	12,400
		48,000		5,600	8,500	8,500	11,300	14,100
5	54	42,000	6 + 9 + 9 + 12 + 18	4,700	7,000	7,000	9,300	14,000
		48,000		5,300	8,000	8,000	10,700	16,000
5	54	42,000	6 + 9 + 9 + 15 + 15	4,700	7,000	7,000	11,700	11,700
		48,000		5,300	8,000	8,000	13,300	13,300
5	51	42,000	6 + 9 + 12 + 12 + 12	4,900	7,400	9,900	9,900	9,900
		48,000		5,600	8,500	11,300	11,300	11,300
5	54	42,000	6 + 9 + 12 + 12 + 15	4,700	7,000	9,300	9,300	11,700
		48,000		5,300	8,000	10,700	10,700	13,300
5	54	42,000	6 + 12 + 12 + 12 + 12	4,700	9,300	9,300	9,300	9,300
		48,000		5,300	10,700	10,700	10,700	10,700
5	45	42,000	9 + 9 + 9 + 9 + 9	8,400	8,400	8,400	8,400	8,400
		48,000		9,600	9,600	9,600	9,600	9,600
5	48	42,000	9 + 9 + 9 + 9 + 12	7,900	7,900	7,900	7,900	10,500
		48,000		9,000	9,000	9,000	9,000	12,000
5	51	42,000	9 + 9 + 9 + 9 + 15	7,400	7,400	7,400	7,400	12,400
		48,000		8,500	8,500	8,500	8,500	14,100
5	54	42,000	9 + 9 + 9 + 9 + 18	7,000	7,000	7,000	7,000	14,000
		48,000		8,000	8,000	8,000	8,000	16,000
5	51	42,000	9 + 9 + 9 + 12 + 12	7,400	7,400	7,400	9,900	9,900
		48,000		8,500	8,500	8,500	11,300	11,300
5	54	42,000	9 + 9 + 9 + 12 + 15	7,000	7,000	7,000	9,300	11,700
		48,000		8,000	8,000	8,000	10,700	13,300
5	54	42,000	9 + 9 + 12 + 12 + 12	7,000	7,000	9,300	9,300	9,300
		48,000		8,000	8,000	10,700	10,700	10,700



# DIMENSIONS: MXZ-5C42NAHZ

Unit: mm <in>



COOLING & HEATING

1340 Satellite Boulevard, Suwanee, GA 30024  
Toll Free: 800-433-4822 www.mehvac.com



# P-SERIES

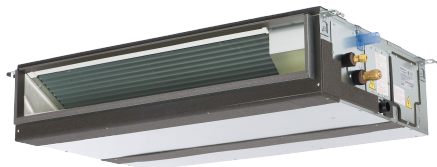
SUBMITTAL DATA: PEAD-A18AA7  
18,000 BTU/H HORIZONTAL-DUCTED FOR MXZ MULTI-ZONE SYSTEMS



Job Name:

System Reference:

Date:



## INDOOR UNIT FEATURES

- Unobtrusive ceiling-concealed design for short-run ductwork.
- Wide ranging external static pressure
- Built-in condensate lift mechanism
- Auto fan speed mode
- Optional FB Series filter boxes for easy access and service
- Ideal for residential homes, retail shopping centers, larger classrooms, office complexes, conference ballrooms, fitness centers, and more

## SPECIFICATIONS: PEAD-A18AA7

Cooling Capacity*1		Btu/h	18,000
Heating Capacity*1		Btu/h	19,000
Electrical	Voltage, Phase, Frequency		208 / 230V, 1-phase, 60 Hz
	Guaranteed Voltage Range		V AC 187 - 253
	Voltage: Indoor - Outdoor, S1-S2		V AC 208V / 230
	Voltage: Indoor - Outdoor, S2-S3		V DC 24
	Voltage: Indoor - Remote controller		V DC 12
MCA		A	1.69
Fan Motor Full Load Amperage		A	1.35
Fan Motor Output		W	85
Airflow Rate, Dry		CFM	424-512-600
Airflow Rate, Wet		CFM	384-472-560
External Static Pressure		in.WG	0.14-0.20-0.28-0.40-0.60
Sound Pressure Level		dB(A)	30-33-37
Drain Pipe Size		In. (mm)	1-1/4 (32)
Condensate Lift Mechanism, Max. Distance		In. (mm)	27-9/16 (700)
Heat Exchanger Type			Plate fin coil
External Finish Color			Galvanized
Unit Dimensions	W: In. (mm)		35-7/16 (900)
	D: In. (mm)		28-7/8 (732)
	H: In. (mm)		9-7/8 (250)
Package Dimensions	W: In.		45-5/16
	D: In.		34-11/16
	H: In.		13-7/16
Unit Weight		Lbs. (kg)	62 (28)
Package Weight		Lbs.	71
Refrigerant Type			R410A
Piping	Gas Pipe Size O.D. (Flared)		In.(mm) 1/2 (12.7)
	Liquid Pipe Size O.D. (Flared)		In.(mm) 1/4 (6.35)

Nominal Conditions	*1 Cooling (Indoor // Outdoor)	°F	80°F DB, 67°F WB // 95°F DB, 75°F WB
	*2 Heating at 47°F (Indoor // Outdoor)		70°F DB, 60°F WB // 47°F DB, 43°F WB

### Notes

Capacity varies based on the number of indoor units operating and the model of the MXZ unit. For reference to connected capacity charts, please refer MXZ Multi-Zone Outdoor Unit Operational Performance.



## SPECIFICATIONS: PEAD-A18AA7

For data on specific outdoor units with ducted, non-ducted, and mixed combinations, see the MXZ Technical and Service Manual.

Notes:

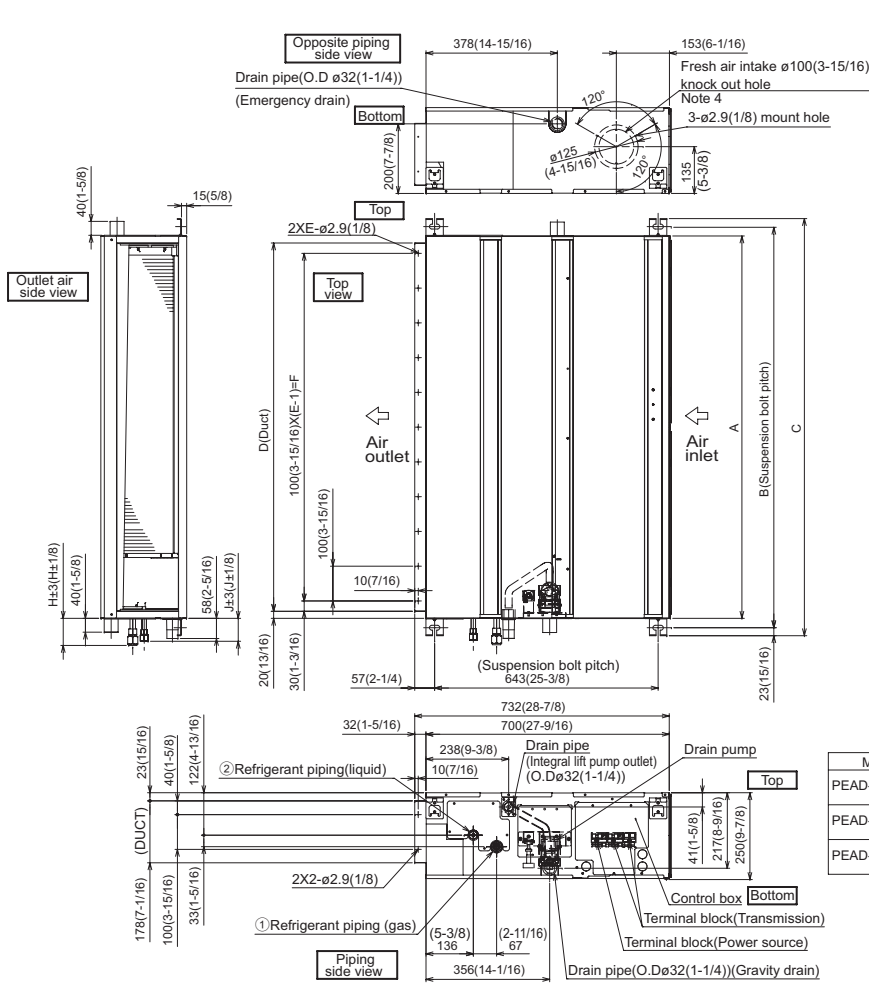
## ACCESSORIES: PEAD-A18AA7

Filter Box with Filters (MERV 13)	<input type="checkbox"/> FBM2-2
3-Pole Disconnect Switch (30A/600V/UL) [fits 2" X 4" utility box]	<input type="checkbox"/> TAZ-MS303
Drain Pan Level Sensor (Control for indoor unit shut off to prevent drain pan overflow)	<input type="checkbox"/> DPLS2
Advanced Blue Diamond Mini-Condensation pump w/ Reservoir & Sensor (110V)	<input type="checkbox"/> X87-711 - 110
Advanced Blue Diamond Mini-Condensation pump w/ Reservoir & Sensor (208/230V)	<input type="checkbox"/> X87-721 - 208/230
Extension Cord for Blue Diamond Pump	<input type="checkbox"/> C13-103
MegaBlue Blue Diamond Condensate Pump (110-230V)	<input type="checkbox"/> X87-835
Remote Sensor (extensible)	<input type="checkbox"/> PAC-SE41TS-E
Connector Cable for Remote Display	<input type="checkbox"/> PAC-SA88HA-EP
	<input type="checkbox"/> PAC-725AD-E (10pcs)
Connector for CN32 (remote ON/OFF)	<input type="checkbox"/> PAC-SE55RA-E
Connector for CN24 (Back up heating)	<input type="checkbox"/> PAC-SE56RA-E
Connector for CN30 (LLC)	<input type="checkbox"/> PAC-SE57RA-E
Remote Operation Adapter (with wire terminals for remote ON/OFF and operation status/error)	<input type="checkbox"/> PAC-SF40RM-E <sup>*1</sup>
External fan / Heater control relay adapter	<input type="checkbox"/> CN24RELAY-KIT-CM3
Backlit, wall-mounted, wireless	<input type="checkbox"/> MHK1
Wireless adapter	<input type="checkbox"/> PAC-USWHS002-WF-1
BACnet® and Modbus Interface	<input type="checkbox"/> PAC-UKPRC001-CN-1
Wall-mounted, Wired	<input type="checkbox"/> PAC-YT53CRAU-J
Wired remote controller	<input type="checkbox"/> PAR-32MAA-J
T-STAT Interface	<input type="checkbox"/> PAC-US444CN-1
Wired remote controller	<input type="checkbox"/> PAR-32MAA
Signal Receiver	<input type="checkbox"/> PAR-SA9CA-E
Wireless Remote Controller	<input type="checkbox"/> PAR-FL32MA-E
Wireless Signal Receiver	<input type="checkbox"/> PAR-FA32MA-E
Wire for Remote ON/OFF with CN32 connector	<input type="checkbox"/> PAC-715AD
Lockdown Bracket for wireless, hand-held, remote controllers	<input type="checkbox"/> RCMKP1CB

<sup>\*1</sup> Unable to use with wireless remote controller

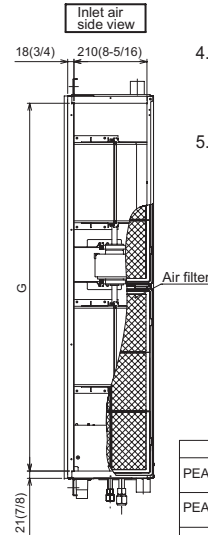
# DIMENSIONS: PEAD-A18AA7

## PEAD-A18AA7



Unit:mm(in.)

- Note 1. Use an M10 screw for the suspension bolt (field supply).  
 2. Keep the service space for maintenance at the bottom.  
 3. This drawing is for PEAD-A24-30-36-42 AA7 models, which have 2 fans. PEAD-A12-18AA7 models have 1 fan.  
 4. If the inlet duct is used, remove the air filter (supplied with the unit), then install the filter (field supply) at the suction side.  
 5. Heat air to 0°C (32°F) or higher when taking fresh air with a fresh air intake.

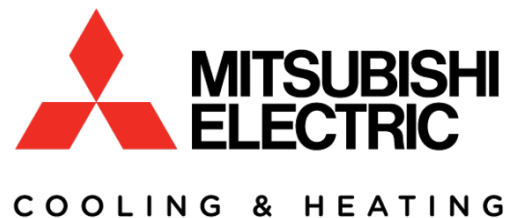


Unit:mm(in.)

Model	J	① Gas pipe	② Liquid pipe
PEAD-A12, 18AA7	62 (2-1/2)	ø12.7 (1/2)	ø6.35 (1/4)
PEAD-A24, 30AA7	66 (2-5/8)	ø15.88 (5/8)	ø9.52 (3/8)
PEAD-A36, 42AA7			

Unit:mm(in.)

Model	A	B	C	D	E	F	G	H
PEAD-A12, 18AA7	900 (35-7/16)	954 (37-9/16)	1000 (39-3/8)	860 (33-7/8)	9 (31-1/2)	800 (31-1/2)	858 (33-13/16)	72 (2-7/8)
PEAD-A24, 30AA7	1100 (43-5/16)	1154 (45-7/16)	1200 (47-1/4)	1060 (41-3/4)	11 (41-3/4)	1000 (39-3/8)	1058 (41-11/16)	78 (3-1/8)
PEAD-A36, 42AA7	1400 (55-1/8)	1454 (57-1/4)	1500 (59-1/16)	1360 (53-9/16)	14 (51-3/16)	1300 (51-3/16)	1358 (53-1/2)	



1340 Satellite Boulevard, Suwanee, GA 30024  
 Toll Free: 800-433-4822 www.mehvac.com

FORM# PEAD-A18AA7 FOR MXZ MULTI-ZONE SYSTEMS - 201706



Specifications are subject to change without notice.

Copyright © 2017 Mitsubishi Electric US, Inc.

# P-SERIES

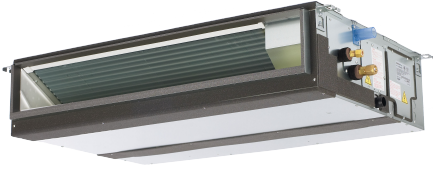
SUBMITTAL DATA: PEAD-A24AA7  
24,000 BTU/H HORIZONTAL-DUCTED FOR MXZ MULTI-ZONE SYSTEMS



Job Name:

System Reference:

Date:



## INDOOR UNIT FEATURES

- Unobtrusive ceiling-concealed design for short-run ductwork.
- Wide ranging external static pressure
- Built-in condensate lift mechanism
- Auto fan speed mode
- Optional FB Series filter boxes for easy access and service
- Ideal for residential homes, retail shopping centers, larger classrooms, office complexes, conference ballrooms, fitness centers, and more

## SPECIFICATIONS: PEAD-A24AA7

Cooling Capacity*1		Btu/h	24,000
Heating Capacity*1		Btu/h	26,000
Electrical	Voltage, Phase, Frequency		208 / 230V, 1-phase, 60 Hz
	Guaranteed Voltage Range		V AC 187 - 253
	Voltage: Indoor - Outdoor, S1-S2		V AC 208V / 230
	Voltage: Indoor - Outdoor, S2-S3		V DC 24
	Voltage: Indoor - Remote controller		V DC 12
MCA		A	2.63
Fan Motor Full Load Amperage		A	2.10
Fan Motor Output		W	121
Airflow Rate, Dry		CFM	512-635-741
Airflow Rate, Wet		CFM	472-595-701
External Static Pressure		in.WG	0.14-0.20-0.28-0.40-0.60
Sound Pressure Level		dB(A)	30-33-37
Drain Pipe Size		In. (mm)	1-1/4 (32)
Condensate Lift Mechanism, Max. Distance		In. (mm)	27-9/16 (700)
Heat Exchanger Type			Plate fin coil
External Finish Color			Galvanized
Unit Dimensions	W: In. (mm)		43-5/16 (1100)
	D: In. (mm)		28-7/8 (732)
	H: In. (mm)		9-7/8 (250)
Package Dimensions	W: In.		53-3/16
	D: In.		34-11/16
	H: In.		13-7/16
Unit Weight		Lbs. (kg)	69 (31)
Package Weight		Lbs.	82
Refrigerant Type			R410A
Piping	Gas Pipe Size O.D. (Flared)		In.(mm) 5/8 (15.88)
	Liquid Pipe Size O.D. (Flared)		In.(mm) 3/8 (9.52)

Nominal Conditions	*1 Cooling (Indoor // Outdoor)	°F	80°F DB, 67°F WB // 95°F DB, 75°F WB
	*2 Heating at 47°F (Indoor // Outdoor)		70°F DB, 60°F WB // 47°F DB, 43°F WB

### Notes

Capacity varies based on the number of indoor units operating and the model of the MXZ unit. For reference to connected capacity charts, please refer MXZ Multi-Zone Outdoor Unit Operational Performance.

## SPECIFICATIONS: PEAD-A24AA7

For data on specific outdoor units with ducted, non-ducted, and mixed combinations, see the MXZ Technical and Service Manual.

Notes:

## ACCESSORIES: PEAD-A24AA7

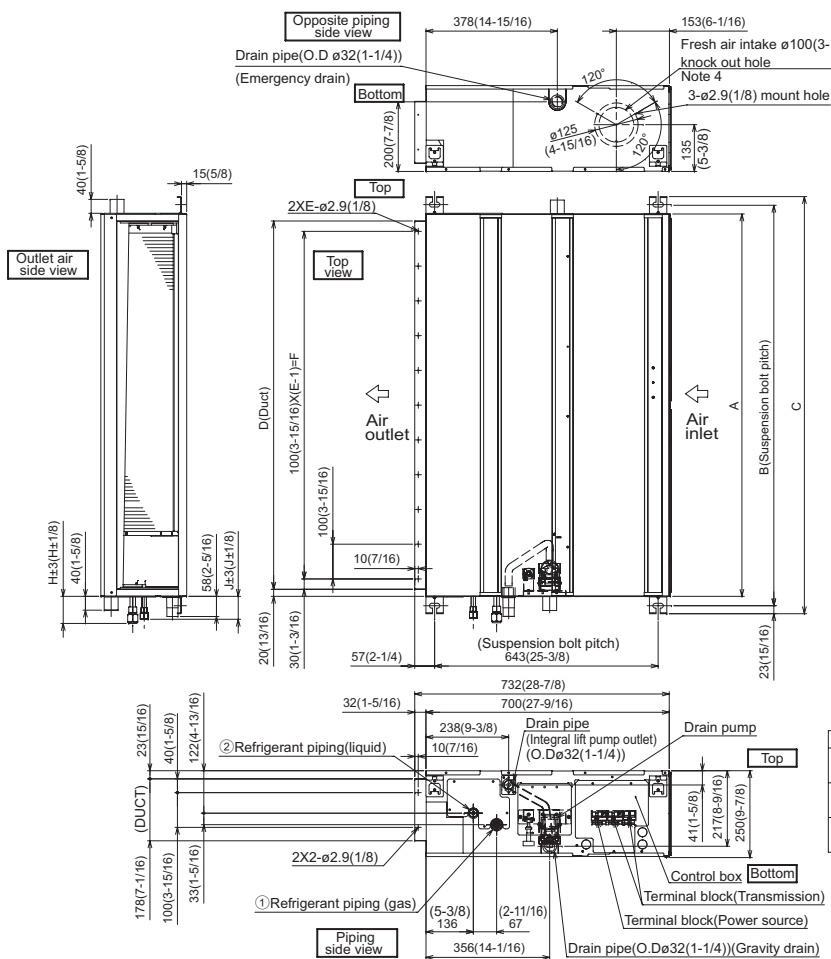
Filter Box with Filters (MERV 13)	<input type="checkbox"/> FBM2-3
3-Pole Disconnect Switch (30A/600V/UL) [fits 2" X 4" utility box]	<input type="checkbox"/> TAZ-MS303
Drain Pan Level Sensor (Control for indoor unit shut off to prevent drain pan overflow)	<input type="checkbox"/> DPLS2
Advanced Blue Diamond Mini-Condensation pump w/ Reservoir & Sensor (110V)	<input type="checkbox"/> X87-711 - 110
Advanced Blue Diamond Mini-Condensation pump w/ Reservoir & Sensor (208/230V)	<input type="checkbox"/> X87-721 - 208/230
Extension Cord for Blue Diamond Pump	<input type="checkbox"/> C13-103
MegaBlue Blue Diamond Condensate Pump (110-230V)	<input type="checkbox"/> X87-835
Remote Sensor (extensible)	<input type="checkbox"/> PAC-SE41TS-E
Connector Cable for Remote Display	<input type="checkbox"/> PAC-725AD-E (10pcs)
Connector for CN32 (remote ON/OFF)	<input type="checkbox"/> PAC-SE55RA-E
Connector for CN24 (Back up heating)	<input type="checkbox"/> PAC-SE56RA-E
Connector for CN30 (LLC)	<input type="checkbox"/> PAC-SE57RA-E
Remote Operation Adapter (with wire terminals for remote ON/OFF and operation status/error)	<input type="checkbox"/> PAC-SF40RM-E*1
External fan / Heater control relay adapter	<input type="checkbox"/> CN24RELAY-KIT-CM3
Backlit, wall-mounted, wireless	<input type="checkbox"/> MHK1
Wireless Adapter	<input type="checkbox"/> PAC-USWHS002-WF-1
BACnet® and Modbus Interface	<input type="checkbox"/> PAC-UKPRC001-CN-1
Wall-mounted, Wired	<input type="checkbox"/> PAC-YT53CRAU-J
Wired Remote Controller	<input type="checkbox"/> PAR-32MAA-J
T-STAT Interface	<input type="checkbox"/> PAC-US444CN-1
Wired Remote Controller	<input type="checkbox"/> PAR-32MAA
Signal Receiver	<input type="checkbox"/> PAR-SA9CA-E
Wireless Remote Controller	<input type="checkbox"/> PAR-FL32MA-E
Wireless Signal Receiver	<input type="checkbox"/> PAR-FA32MA-E
Wire for Remote ON/OFF with CN32 connector	<input type="checkbox"/> PAC-715AD
Lockdown Bracket for Wireless, Hand-held, Remote Controllers	<input type="checkbox"/> RCMKP1CB

\*1 Unable to use with wireless remote controller

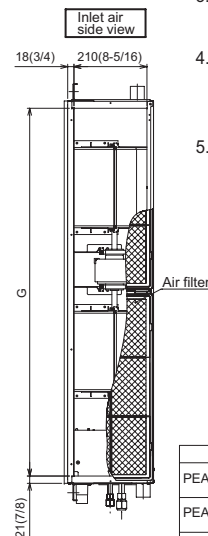
# DIMENSIONS: PEAD-A24AA7

## PEAD-A24AA7

Unit:mm(in.)



- Note 1. Use an M10 screw for the suspension bolt (field supply).  
 2. Keep the service space for maintenance at the bottom.  
 3. This drawing is for PEAD-A24-30-36-42 AA7 models, which have 2 fans. PEAD-A12-18AA7 models have 1 fan.  
 4. If the inlet duct is used, remove the air filter (supplied with the unit), then install the filter (field supply) at the suction side.  
 5. Heat air to 0°C (32°F) or higher when taking fresh air with a fresh air intake.

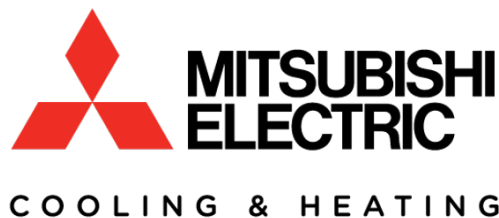


Unit:mm(in.)

Model	J	① Gas pipe	② Liquid pipe
PEAD-A12, 18AA7	62 (2-1/2)	ø12.7 (1/2)	ø6.35 (1/4)
PEAD-A24, 30AA7	66 (2-5/8)	ø15.88 (5/8)	ø9.52 (3/8)
PEAD-A36, 42AA7			

Unit:mm(in.)

Model	A	B	C	D	E	F	G	H
PEAD-A12, 18AA7	900 (35-7/16)	954 (37-9/16)	1000 (39-3/8)	860 (33-7/8)	9	800 (31-1/2)	858 (33-13/16)	72 (2-7/8)
PEAD-A24, 30AA7	1100 (43-5/16)	1154 (45-7/16)	1200 (47-1/4)	1060 (41-3/4)	11	1000 (39-3/8)	1058 (41-11/16)	78 (3-1/8)
PEAD-A36, 42AA7	1400 (55-1/8)	1454 (57-1/4)	1500 (59-1/16)	1360 (53-9/16)	14	1300 (51-3/16)	1358 (53-1/2)	



1340 Satellite Boulevard, Suwanee, GA 30024  
 Toll Free: 800-433-4822 www.mehvac.com

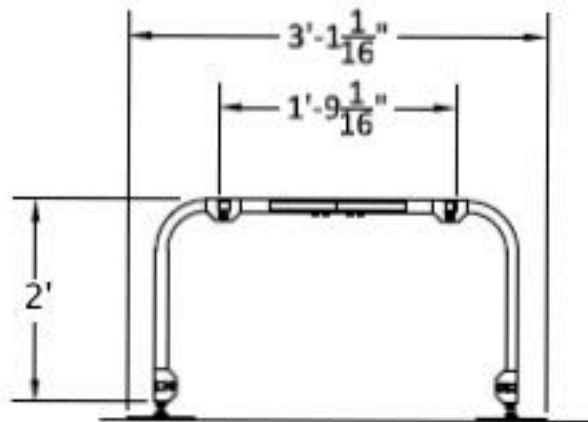
FORM# PEAD-A24AA7 FOR MXZ MULTI-ZONE SYSTEMS - 201706



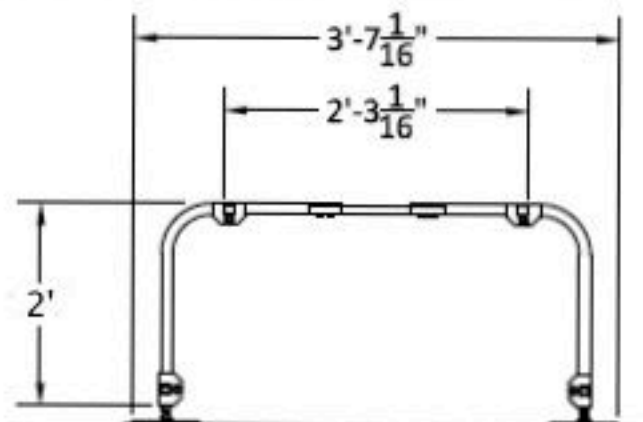
Specifications are subject to change without notice.

Copyright © 2017 Mitsubishi Electric US, Inc.

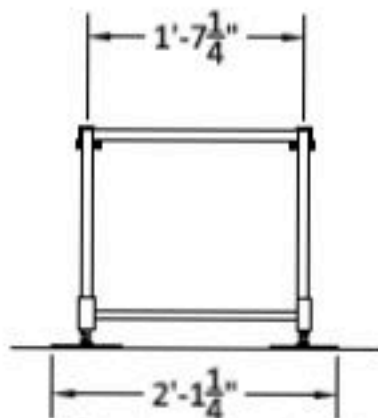




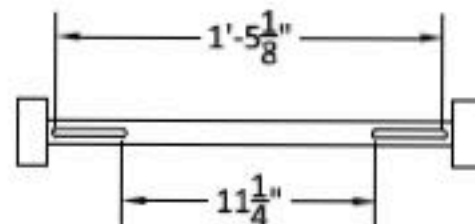
Side View - Retracted



Side View - Expanded



End View - Fixed



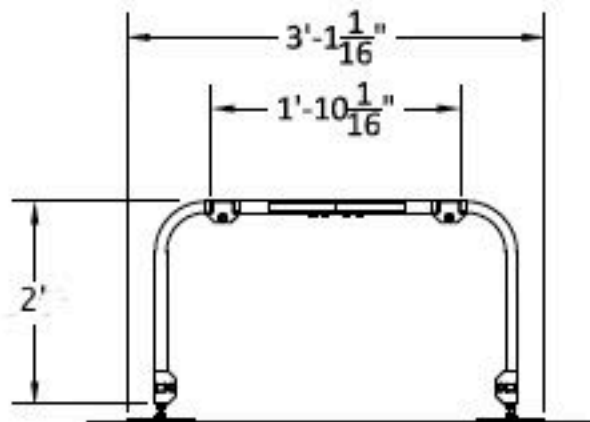
Spacer Bar Detail  
(Showing Range of Bolt Spacing)

**QUICK-SLING**

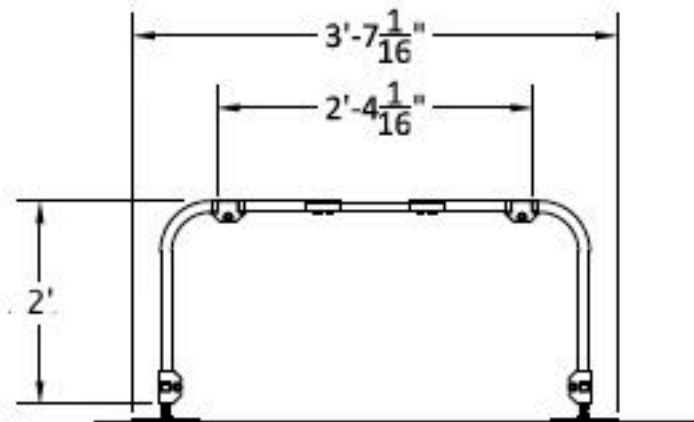
**ASSEMBLY DRAWING**  
"MINI-SPLIT 24"  
ADJUSTABLE STAND - WIDE  
MODEL NO. QSMS2401

www.quick-sling.com  
email: info@quick-sling.com  
fax: 1-(800)-699-0423

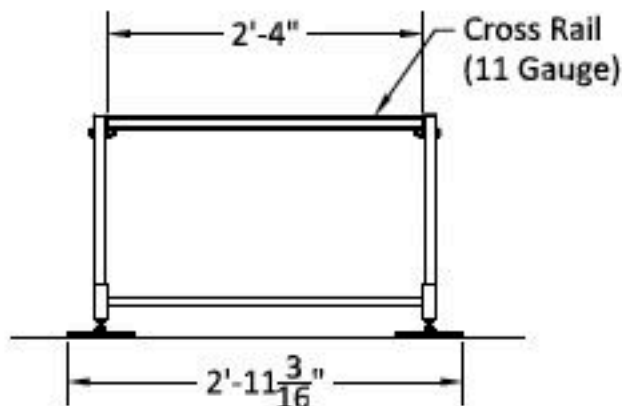
Quick Sling, LLC  
391 W. Water Street  
Taunton, MA 02780  
1-(800)-699-0543



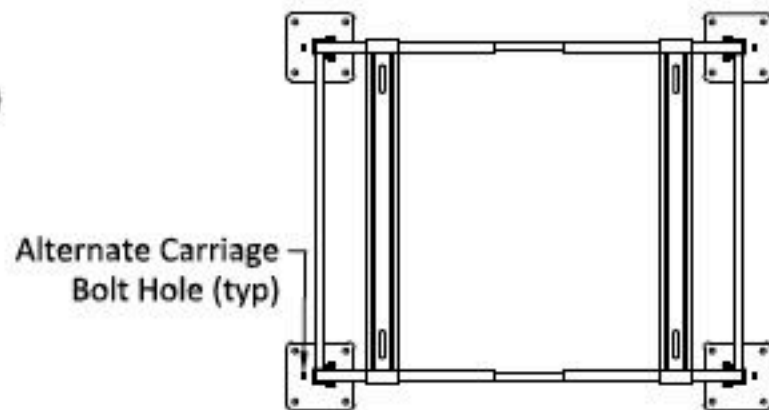
Side View - Retracted



Side View - Expanded



End View - Fixed



Plan View - Expanded

**QUICK-SLING**

**ASSEMBLY DRAWING**  
**"MINI-SPLIT 24"**  
**ADJUSTABLE STAND - WIDE**  
**MODEL NO. QSMS2402**

www.quick-sling.com  
 email: info@quick-sling.com  
 fax: 1-(800)-699-0423

Quick Sling, LLC  
 391 W. Water Street  
 Taunton, MA 02780  
 1-(800)-699-0543