

**IBC 2009 CODE DATA**

OCCUPANT LOAD	141 PEOPLE
USE GROUP CLASSIFICATION	STORAGE-I, MERCANTILE
TYPE OF CONSTRUCTION	5B - UNPROTECTED
TOTAL AREA OF WORK	12,884 SF
ACTUAL BUILDING AREA	12,884 SF
BUILDING HEIGHT	(1) STORIES
BUILDING AREA LIMITATION - SQ. FT. (TABLE 503)	9,000 SF PER FLOOR
BUILDING HEIGHT LIMITATION - STORIES (TABLE 503)	(1) STORIES
STREET FRONTAGE INCREASE (150%) - SQ. FT.	N/A
AUTOMATIC SPRINKLER SYSTEM AREA INCREASE (300%) - SQ. FT.	36,000 SF
AUTOMATIC SPRINKLER SYSTEM HEIGHT INCREASE	N/A
FIRE SUPPRESSION:	YES-PER NFPA 13
EXIT ACCESS FIRE RATINGS:	
FIRE WALLS:	
PARTY WALLS	1 HOUR TENANT
STAIR ENCLOSURES	NONE
SHAFTS	NONE
EXIT ACCESS CORRIDORS	0 HOUR
FIRE PROTECTION OF STRUCTURE:	
PRIMARY STRUCTURAL FRAME	0 HOUR
LOAD BEARING WALLS - EXTERIOR	0 HOUR
LOAD BEARING WALLS - INTERIOR	0 HOUR
NON-LOAD BEARING WALLS - EXTERIOR	0 HOUR
NON-LOAD BEARING WALLS - INTERIOR	0 HOUR
FLOOR CONSTRUCTION	0 HOUR
ROOF CONSTRUCTION	0 HOUR

OCCUPANT LOAD:  
DISTRIBUTION CENTER: 9,303 SF/ 500 SF/ PERSON (GROSS) = 19 PEOPLE  
MEZZANINE: 363 SF/ 500 SF/ PERSON (GROSS) = 2 PEOPLE

MERCANTILE: 3,581 SF/ 30 SF/ PERSON (GROSS) = 120 PEOPLE  
TOTAL OCCUPANT LOAD = 141 PEOPLE

**NFPA 101 2009 CODE DATA**

OCCUPANT LOAD	141 PEOPLE
USE GROUP CLASSIFICATION	STORAGE(ORDINARY)MERCANTILE(CLASS-B)
TYPE OF CONSTRUCTION	5 (000) - UNPROTECTED
TOTAL AREA OF WORK	12,884 SF
ACTUAL BUILDING AREA	12,884 SF
BUILDING HEIGHT	(1) STORY
BUILDING AREA LIMITATION - SQ. FT.	UNLIMITED
BUILDING HEIGHT LIMITATION - STORIES	UNLIMITED
STREET FRONTAGE INCREASE (150%) - SQ. FT.	N/A
AUTOMATIC SPRINKLER SYSTEM AREA INCREASE (200%) - SQ. FT.	N/A
AUTOMATIC SPRINKLER SYSTEM HEIGHT INCREASE	N/A
FIRE SUPPRESSION:	YES-PER NFPA 13
EXIT ACCESS FIRE RATINGS:	
FIRE WALLS:	
PARTY WALLS	1 HOUR TENANT
STAIR ENCLOSURES	NA
SHAFTS	NA
EXIT ACCESS CORRIDORS	0 HOUR
FIRE PROTECTION OF STRUCTURE:	
PRIMARY STRUCTURAL FRAME	0 HOUR
LOAD BEARING WALLS - EXTERIOR	0 HOUR
LOAD BEARING WALLS - INTERIOR	0 HOUR
NON-LOAD BEARING WALLS - EXTERIOR	0 HOUR
NON-LOAD BEARING WALLS - INTERIOR	0 HOUR
FLOOR CONSTRUCTION	0 HOUR
ROOF CONSTRUCTION	0 HOUR

INTERIOR FINISHES:  
WALLS AND CEILINGS: CLASS A, B OR C  
FLOORS: CLASS 1 OR 2  
F.F.E. SHALL MEET NFPA 265 AND 701.

DISTANCE LIMITATIONS: (SPRINKLERED BUILDING)

COMMON PATH OF TRAVEL:  
STORAGE: 100' MAX.  
MERCANTILE: 100' MAX.

MAXIMUM TRAVEL DISTANCE:  
STORAGE: 400' MAX.  
MERCANTILE: 250' MAX.

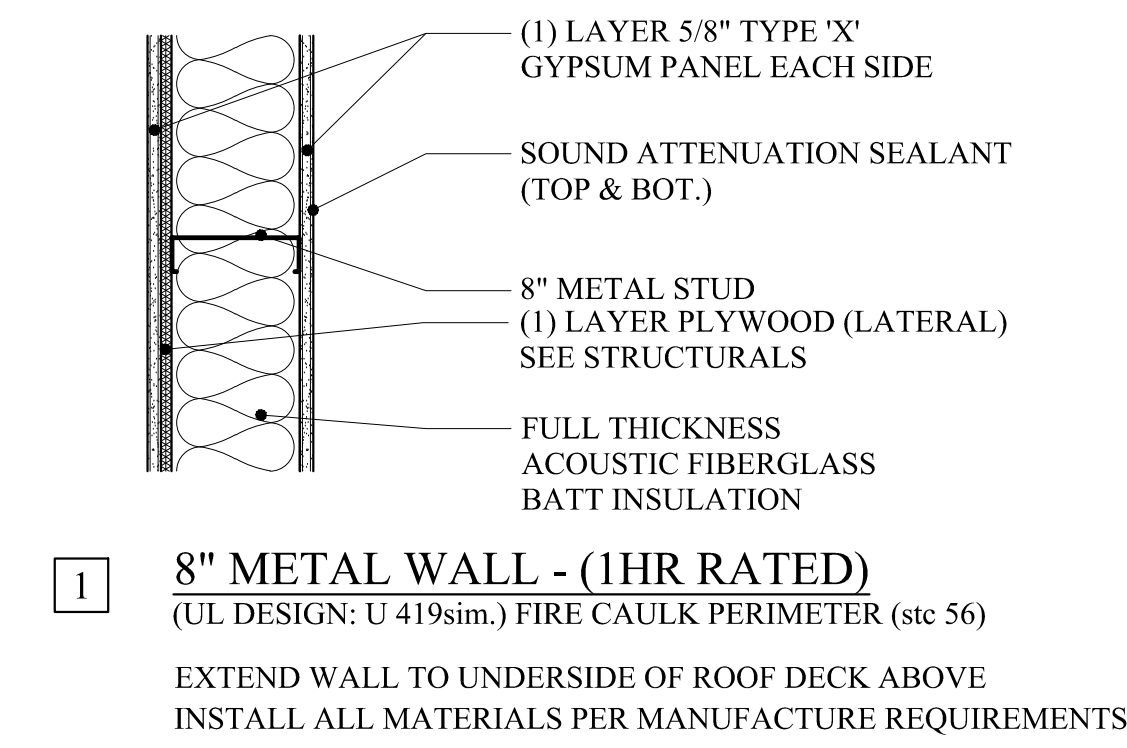
**LIFE SAFETY**

**LEGEND:**

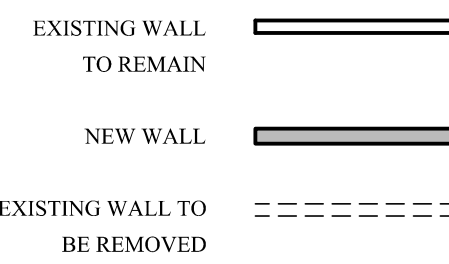
- EMERGENCY LIGHT
- EXIT LIGHT
- SMOKE DETECTOR
- SMOKE & CO DETECTOR, SINGLE STATION
- PHOTOELECTRIC SMOKE W/ SOUNDER BASE AND CO DETECTOR
- HEAT & CO DETECTOR
- HORN/STROBE
- STROBE
- FIRE EXTINGUISHER IN RECESSED CABINET
- PULL STATION - SPRINKLER SYSTEM

**LIFE SAFETY NOTES:**  
LIFE SAFETY AND FIRE ALARM SYSTEMS SHALL BE DESIGNED AND INSTALLED PER NFPA 72, BY A CITY/ STATE APPROVED CONTRACTOR BY A SEPERATE PERMIT.  
ALL STROBES TO BE 30 CANDELA UNLESS OTHERWISE NOTED.

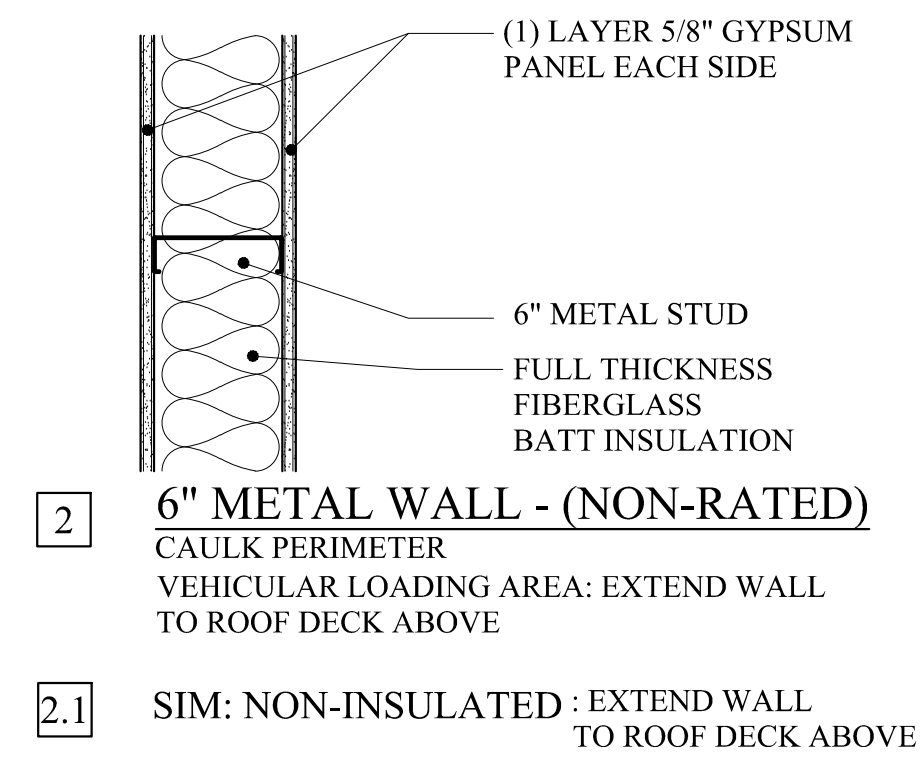
**PROPOSED DEMISING WALL - INTERIOR**



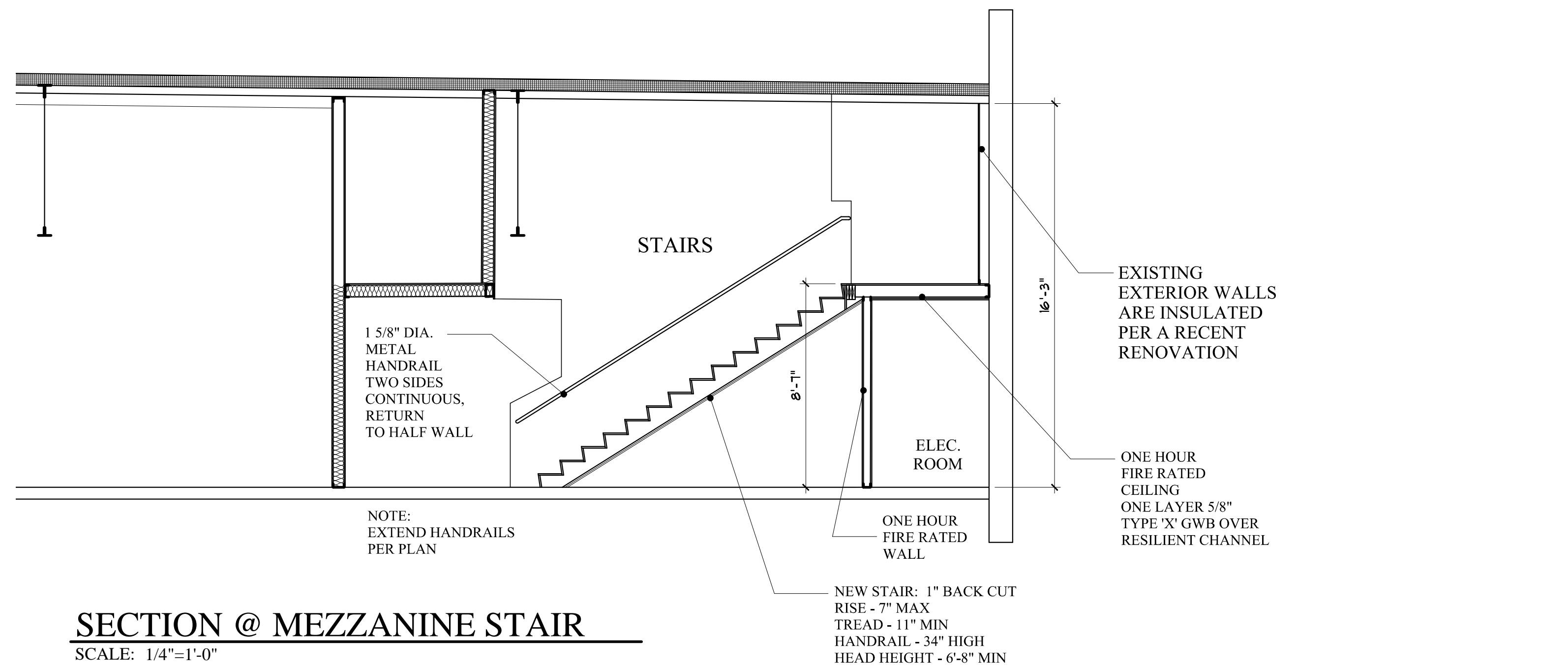
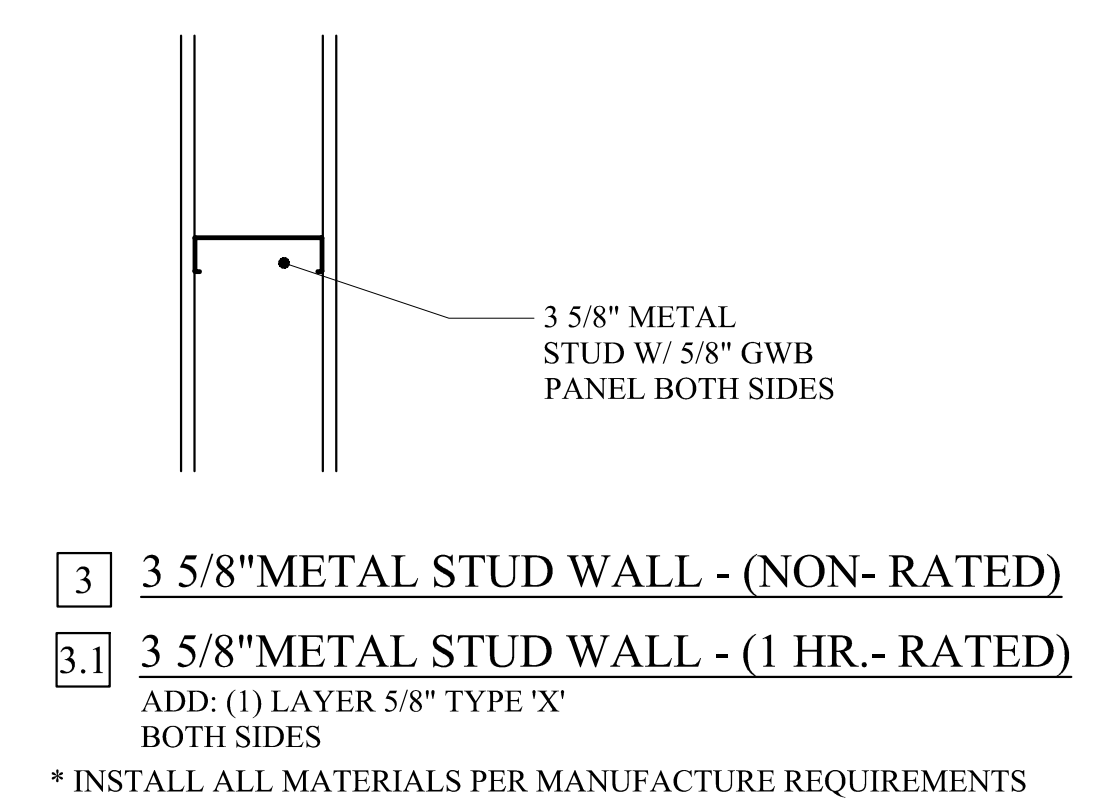
**WALL LEGEND**



**PROPOSED WALL - INTERIOR**

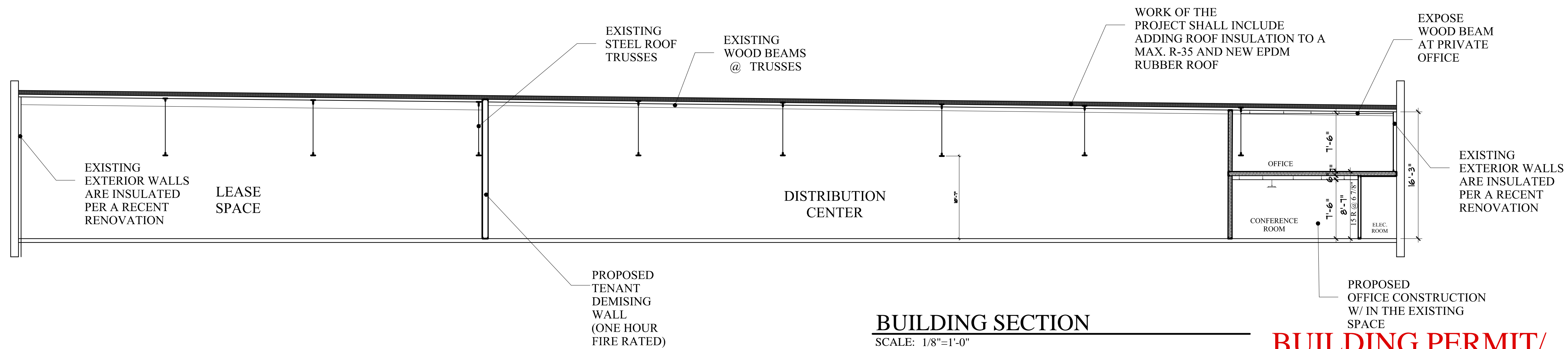


**EXISTING WALL - INTERIOR**



**SECTION @ MEZZANINE STAIR**

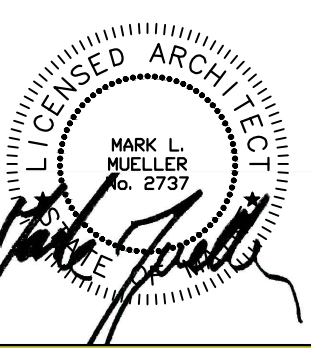
SCALE: 1/4"=1'-0"



**BUILDING SECTION**

SCALE: 1/8"=1'-0"

**BUILDING PERMIT/  
FIRE MARSHAL SET : MARCH 16, 2017**



**MARK  
MUELLER  
ARCHITECTS**

A.I.A.  
100 Commercial Street  
Suite 205  
Portland, Maine 04101  
Phone/Fax 207.774.9057  
Email:  
rfi@muellerarchitects.com

© 2017 FRIEDT 2014  
MARK MUELLER ARCHITECTS

INTERIOR RENOVATIONS FOR:  
**ALTA VISTA LLC**  
495 FOREST STREET  
PORTLAND, MAINE

**BUILDING SECTIONS**

REVISIONS  
DATE  
PROJECT  
ALTA VISTA  
DRAWN BY  
MAM  
CHECK BY  
MAM

**A-1.3**