

MARK MUELLER ARCHITECTS
A.I.A.
100 Commercial Street
Suite 205
Portland, Maine 04101
Phone/Fax 207.774.9057
Email:
rfi@muellerarchitects.com

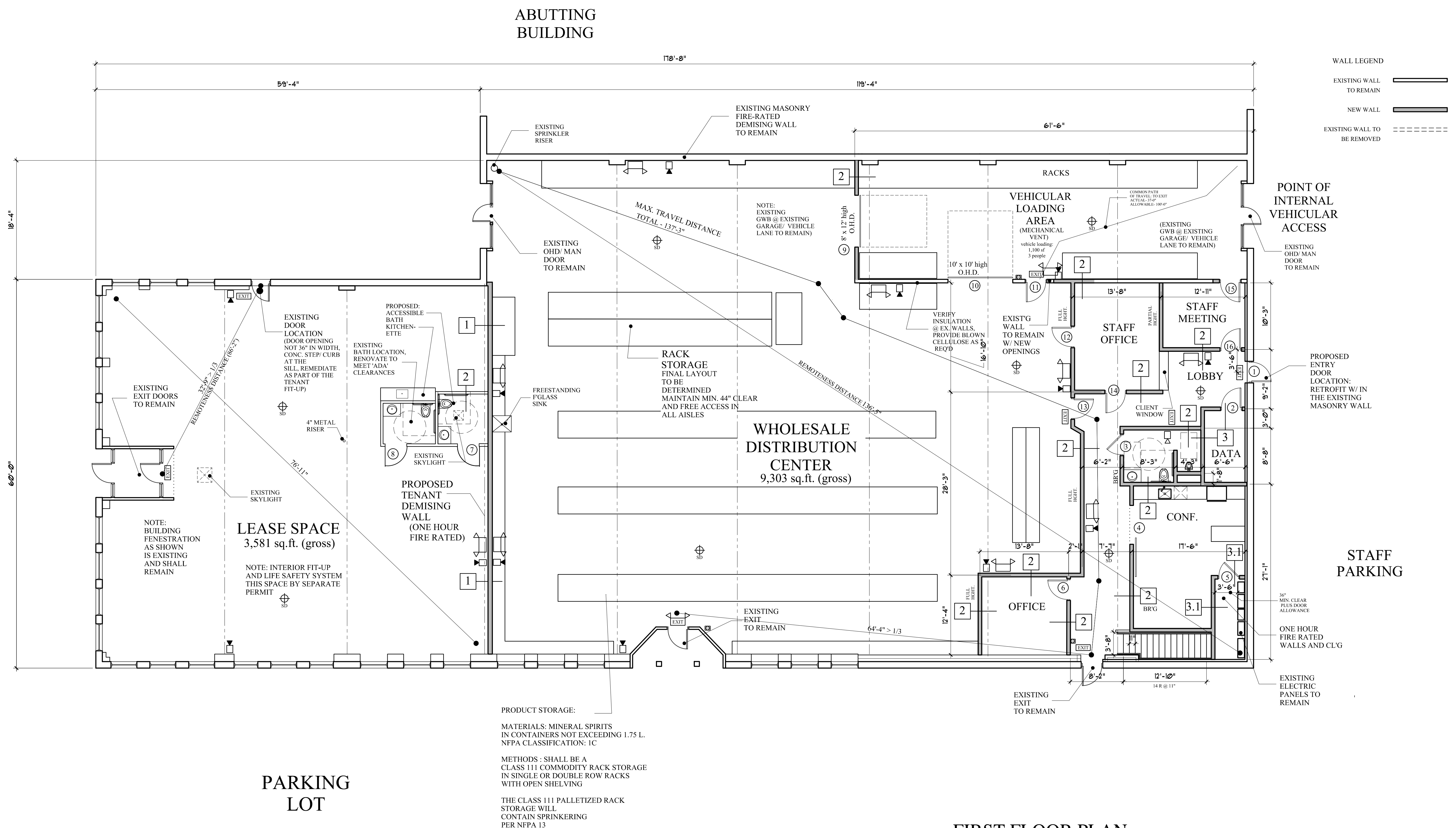
© COPYRIGHT 2014
MARK MUELLER ARCHITECTS

INTERIOR RENOVATIONS FOR:
ALTA VISTA LLC
495 FOREST STREET
PORTLAND, MAINE

FIRST FLOOR PLAN
REVISIONS
DATE: JAN 2017
PROJECT: ALTA VISTA
DRAWN BY: M.M.
CHECK BY: M.M.

A-1.1

FOREST AVE.



ABUTTING BUILDING

PARKING LOT

FIRST FLOOR PLAN
SCALE: 1/8"=1'-0"

GROSS BUILDING AREA: 12,884 SF

**BUILDING PERMIT/
FIRE MARSHAL SET : MARCH 16, 2017**

PRODUCT STORAGE:
MATERIALS: MINERAL SPIRITS
IN CONTAINERS NOT EXCEEDING 1.75 L.
NFPA CLASSIFICATION: 1C

METHODS: SHALL BE A
CLASS 111 COMMODITY RACK STORAGE
IN SINGLE OR DOUBLE ROW RACKS
WITH OPEN SHELVING

THE CLASS 111 PALLETIZED RACK
STORAGE WILL
CONTAIN SPRINKERING
PER NFPA 13