

DOOR SCHEDULE					
NO.	QUANTITY	SIZE	TYPE	FRAME	REMARKS
1	1	3'-0" x 6'-8"	SOLID WOOD	METAL	HINGES, LEVER HARDWARE, ENTRY LOCKSET
2	2	3'-0" x 6'-8"	SOLID WOOD	METAL	HINGES, LEVER HARDWARE, CLOSER, ENTRY LOCKSET
3	1	3'-0" x 3'-0"	SOLID WOOD HALF DOOR	METAL	HINGES, LEVER HARDWARE, PASSAGE LOCKSET, COUNTER TOP
4	1	3'-0" x 6'-8"	SOLID WOOD STOREFRONT	METAL	D-RING PULL HANDLE, PANIC HARDWARE, CLOSER, ENTRY LOCKSET
5	1	3'-0" x 6'-8"	SOLID WOOD FIRE RATED	METAL	HINGES, LEVER HARDWARE, CLOSER, ENTRY LOCKSET, 90-MIN. FIRE RATED
6	1	3'-0" x 6'-8"	SOLID WOOD FIRE RATED	METAL	HINGES, CLOSER, ENTRY LOCKSET, 90-MIN. FIRE RATED, VISION PANEL, INSTALL PANIC HARDWARE
7	2	3'-0" x 6'-8"	SOLID WOOD	METAL	HINGES, LEVER HARDWARE, PRIVACY LOCKSET
8	2	3'-0" x 7'-0"	FULL GLASS STOREFRONT	METAL	D-RING PULL HANDLE, PANIC HARDWARE, CLOSER, ENTRY LOCKSET
9	1	3'-0" x 7'-0"	FULL GLASS STOREFRONT	METAL	D-RING PULL HANDLE, PANIC HARDWARE, CLOSER, ENTRY LOCKSET

- ### PLAN SUBMISSION NOTES
- THIS PLAN IS FOR CITY OF PORTLAND BUILDING CODE, LIFE SAFETY CODE, ADA, FIRE MARSHAL AND OCCUPANCY APPROVAL ONLY.
  - PLAN BASED ON PLAN PROVIDED BY THE OWNER.
  - THE PLUMBING, ELECTRICAL, AND MECHANICAL DESIGN OF THE BUILDING IS BY THE OWNER.
  - IBC 2009 USE GROUP: FIRST FLOOR: ASSEMBLY (A-2)  
SECOND FLOOR: BUSINESS (B)  
MIXED OCCUPANCY NO SEPARATION
  - 2009 NFPA 101 OCCUPANCY: FIRST FLOOR: ASSEMBLY  
SECOND FLOOR: BUSINESS  
MIXED OCCUPANCY NO SEPARATION
  - CONSTRUCTION TYPE: TYPE III B (200/UNPROTECTED)
  - OCCUPANT LOAD: SEATING (890 S.F./15) = 59 OCCUPANTS  
KITCHEN (9 L.F./1.5) + 3 WORKERS = 9 OCCUPANTS  
BAR SEATING (30.5 L.F./1.5) = 20 OCCUPANTS  
TOTAL = 88 OCCUPANTS
  - EXISTING BUILDING EQUIPPED WITH NFPA 72 FIRE ALARM SYSTEM.
  - EXISTING BUILDING DOES NOT HAVE SPRINKLER SYSTEM.
  - THE SHARED PARKING IN THE REAR OF THE BUILDING WORKS OUT TO LESS THAN 25 PARKING SPOTS FOR THE FIRST FLOOR TENANT, THEREFORE (1) ADA PARKING SPOT FOR THIS OCCUPANCY IS JUSTIFIED.

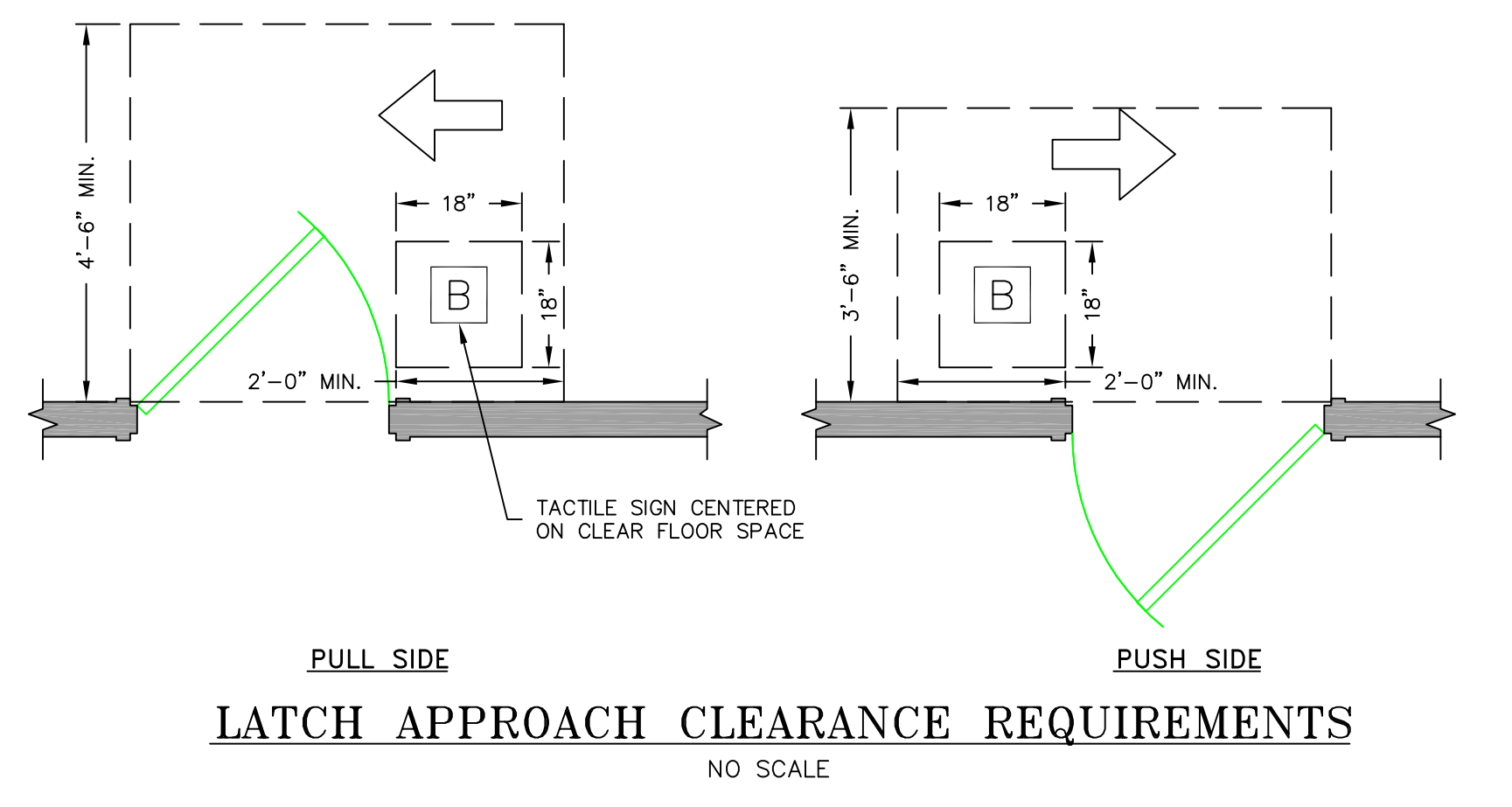
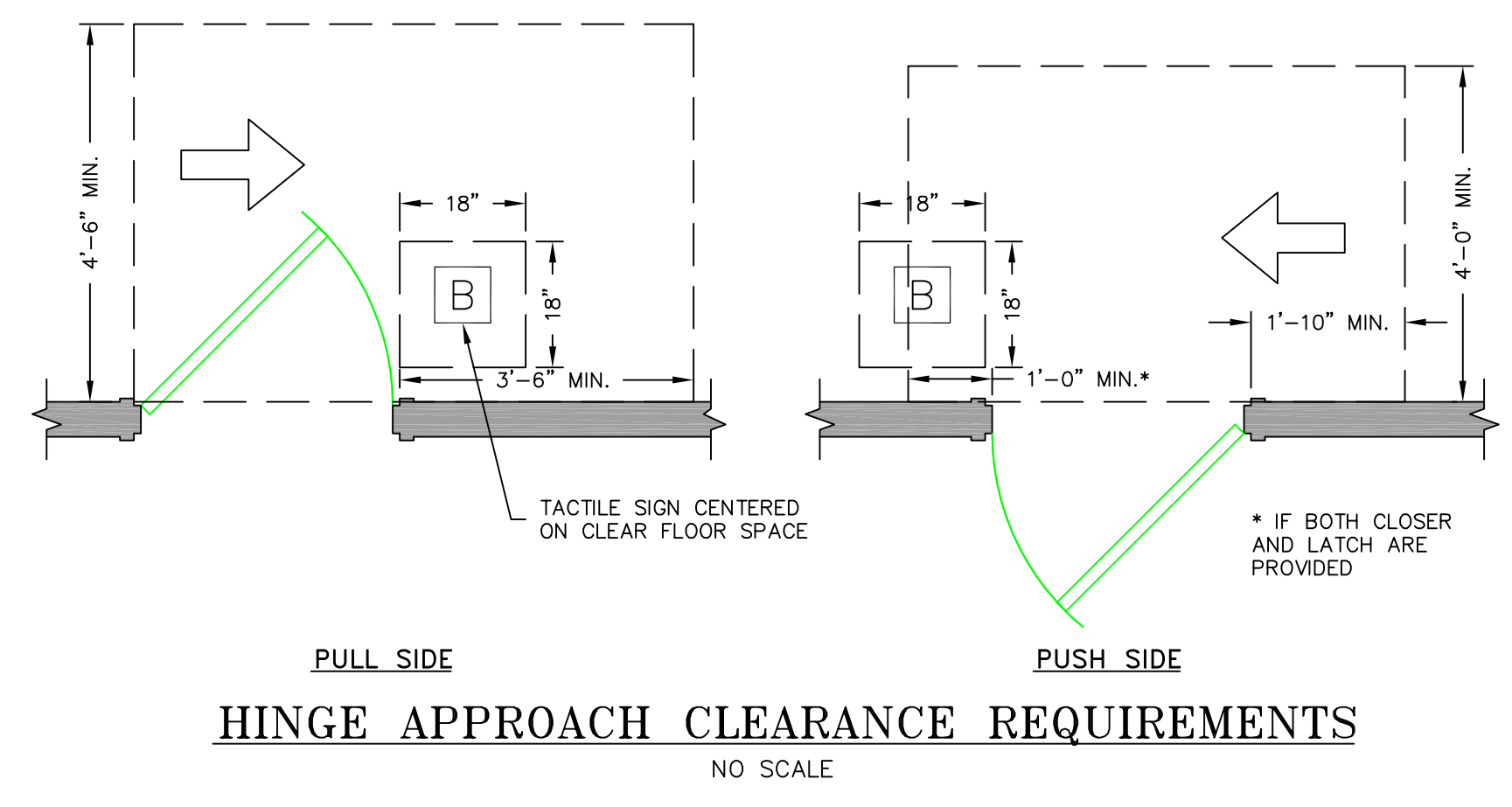
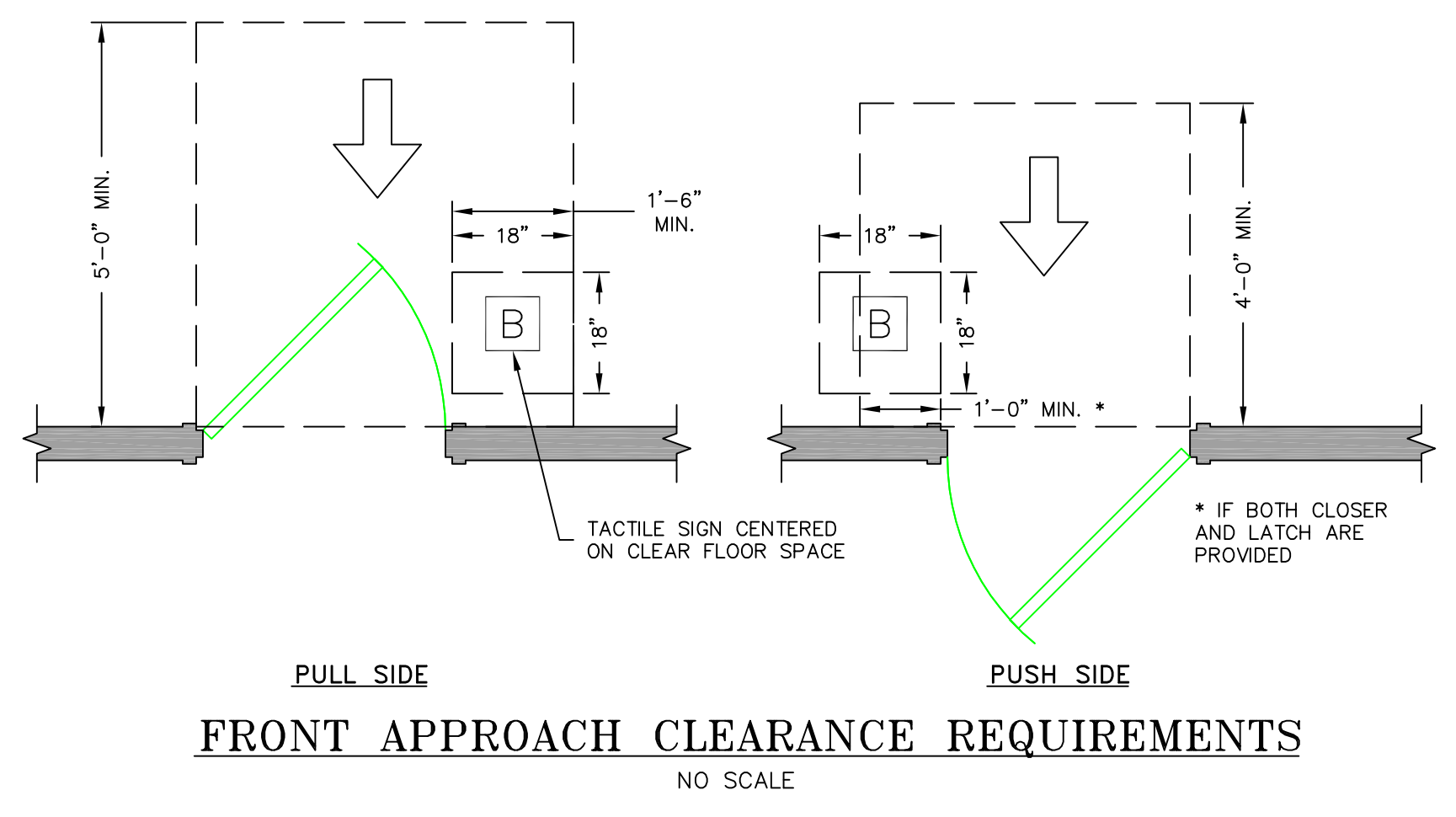
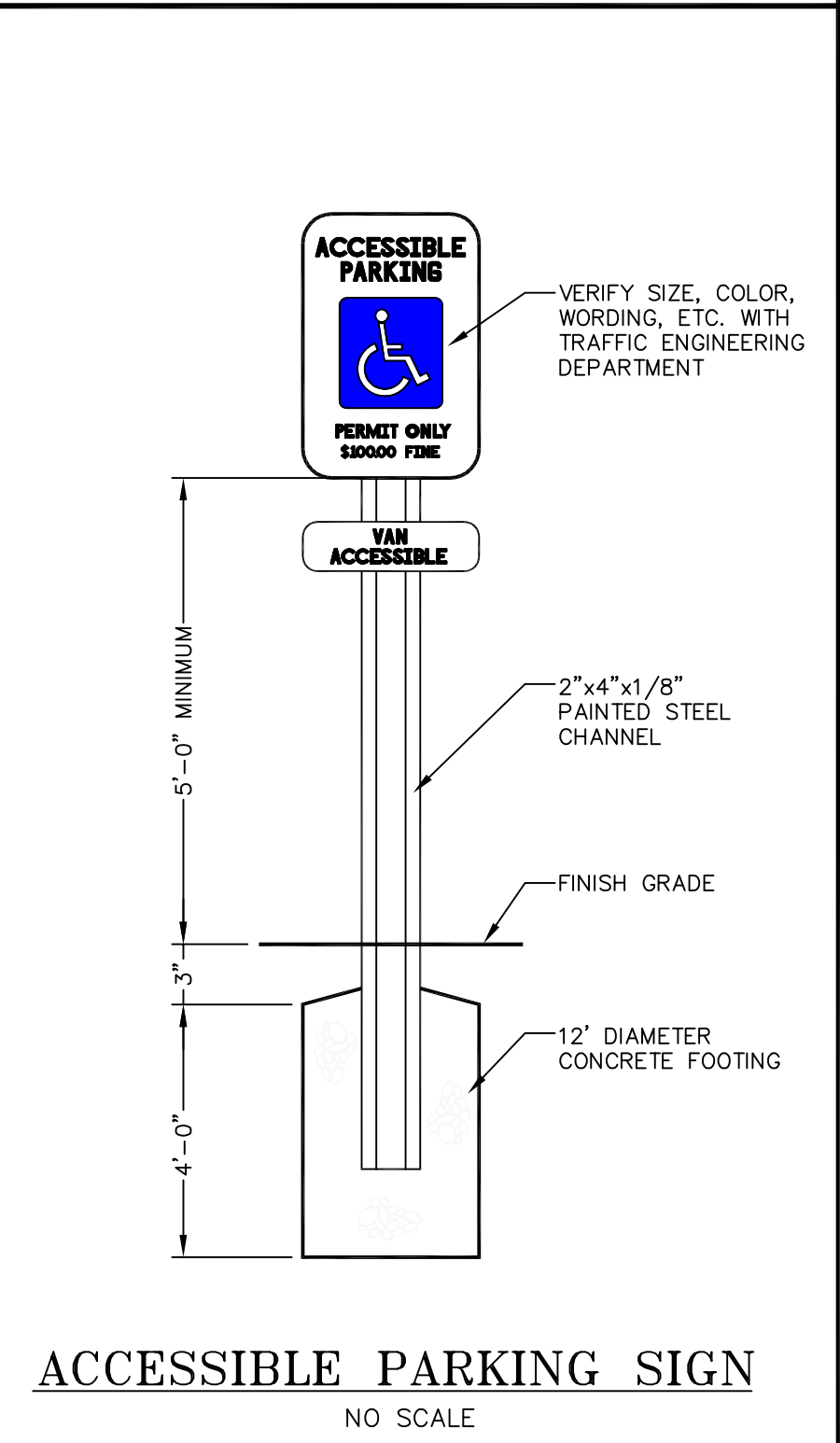
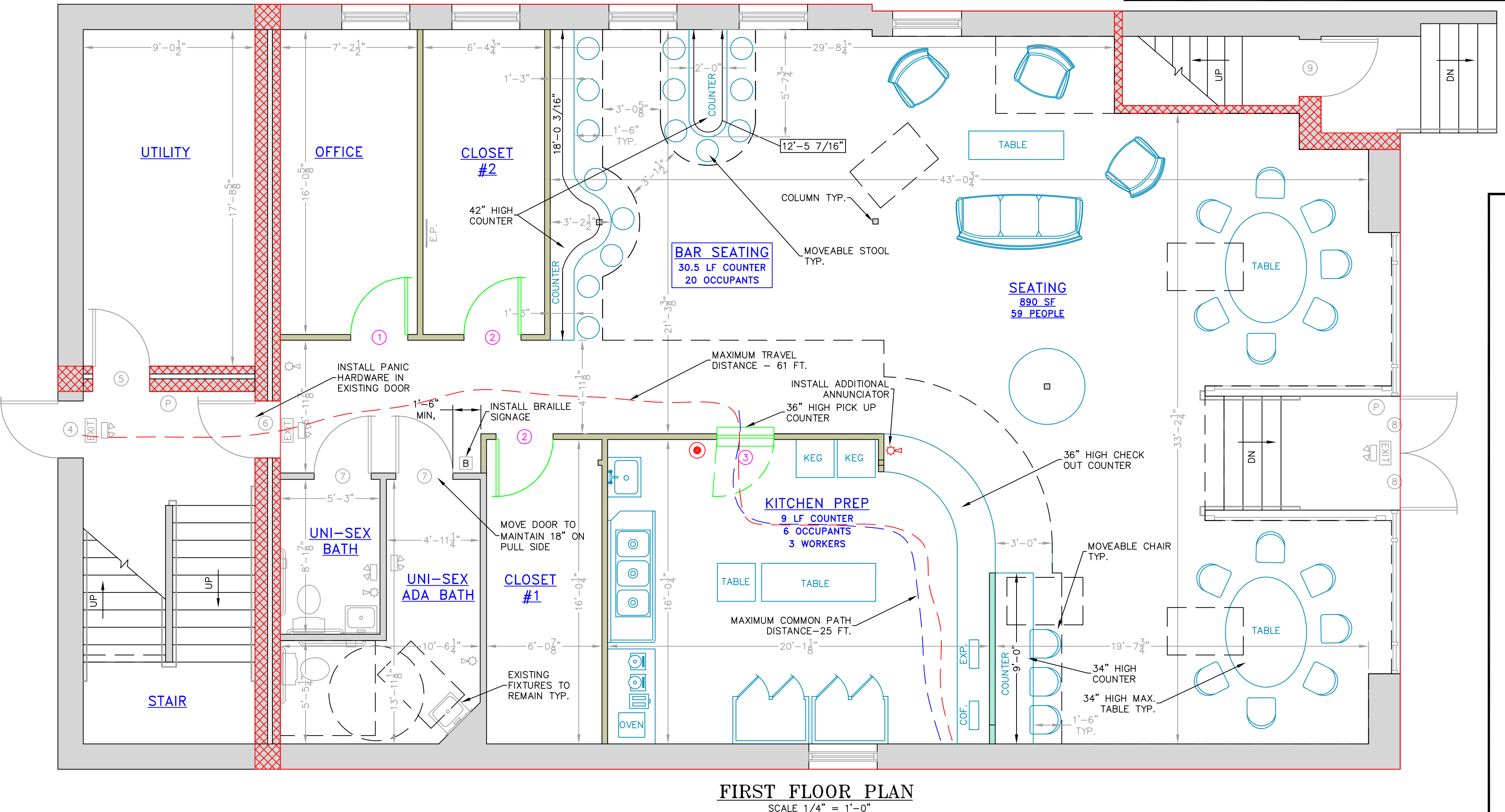
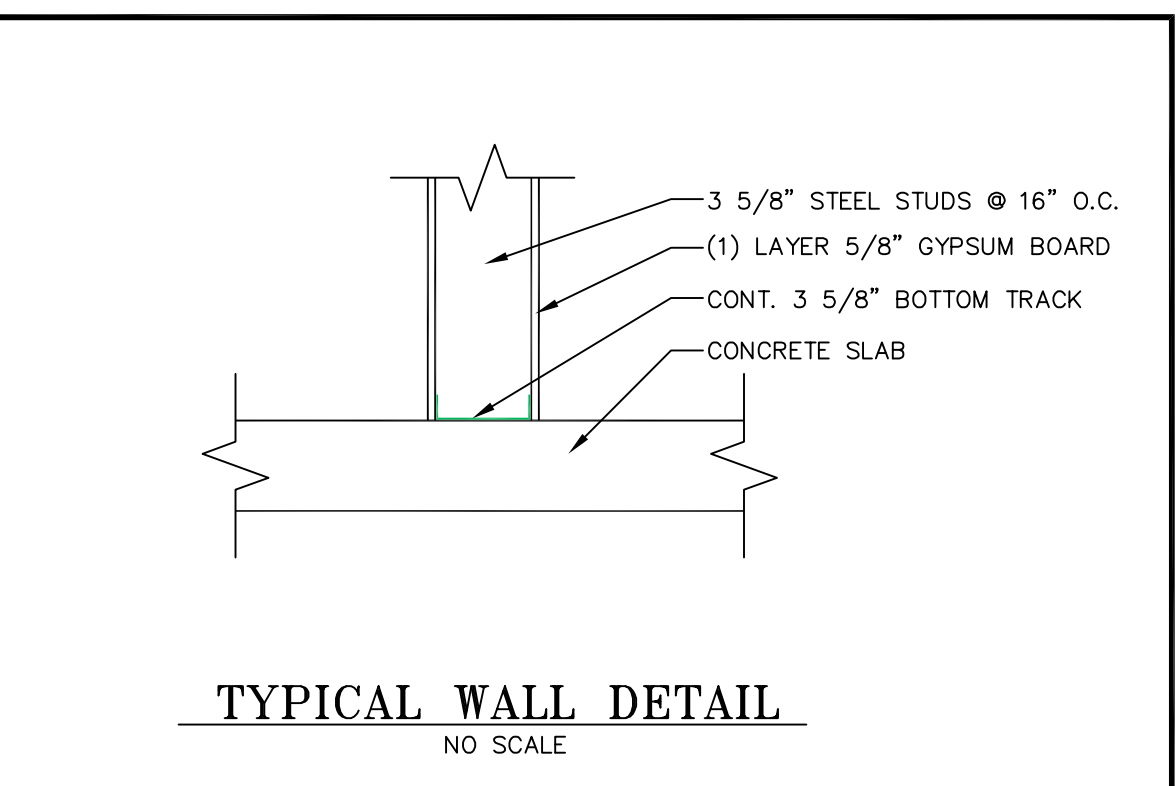
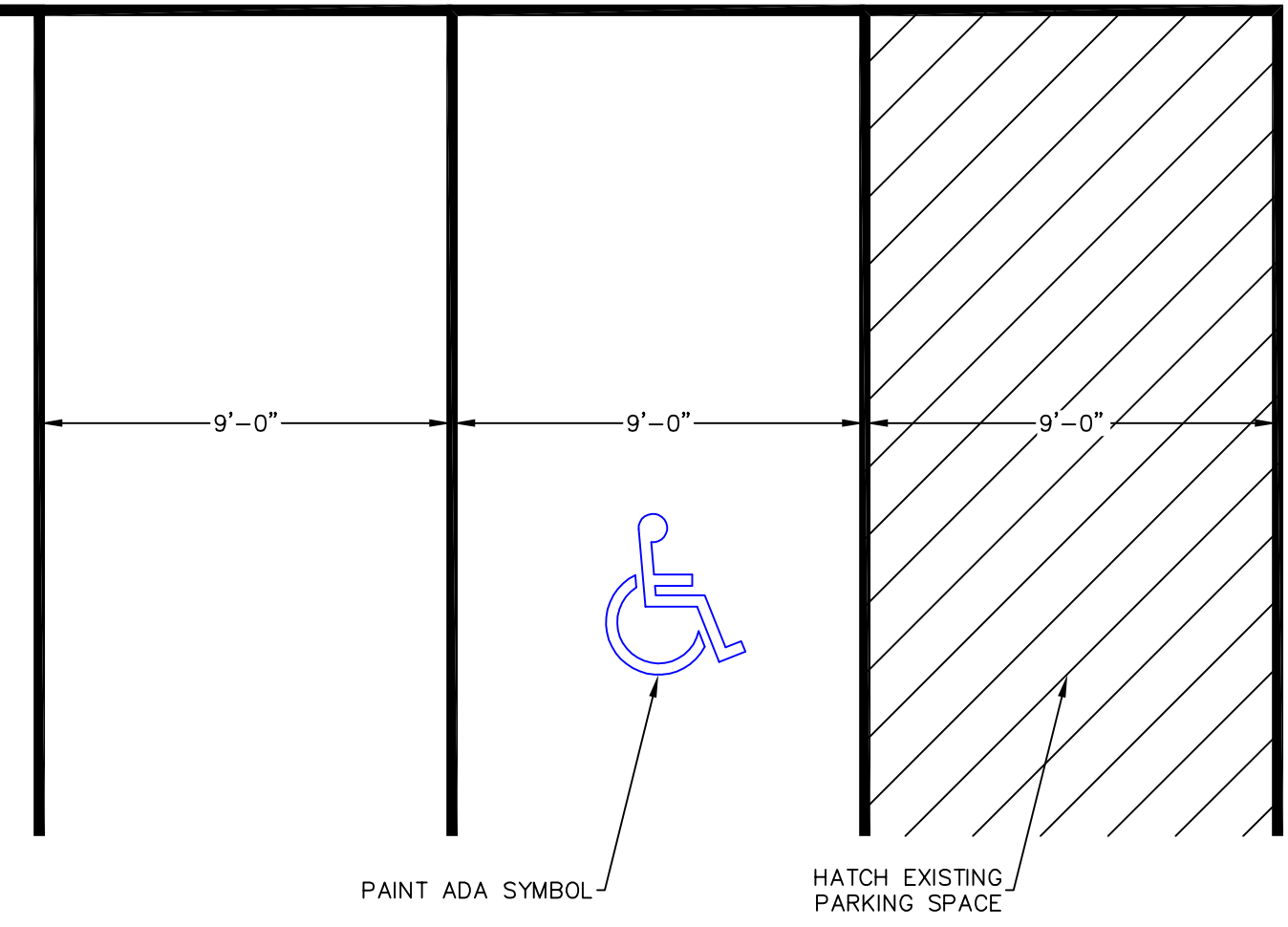
### LEGEND

	EXISTING WALL
	PROPOSED WALL
	PROPOSED HALF WALL
	1-HR. FIRE RATED WALL
	EXIT SIGN
	EMERGENCY LIGHTING
	FIRE ALARM PULL HANDLE
	HORN/STROBE LIGHT
	FIRE EXTINGUISHER
	BRAILLE SIGNAGE

STATE OF MAINE  
BENJAMIN E. MURRAY  
NO. 10128  
LICENSED PROFESSIONAL ENGINEER

**E.S. COFFIN**  
ENGINEERING SURVEYING  
E.S. COFFIN ENGINEERING & SURVEYING, INC.  
432 Com. Road P.O. Box 468 Augusta, Maine 04330  
Ph. (207) 623-9475 Fax (207) 623-0616 Toll Free 1-800-244-9475

SEE ACCESSIBLE PARKING SIGN DETAIL THIS SHEET



NO.	REVISIONS	LAYOUT & OCCUPANT LOAD	DATE
1			10/20/17

SHEET TITLE: **FIRST FLOOR PLAN**

SCALE: AS SHOWN

DATE: SEPTEMBER 20, 2017

DRAWN BY: CSC

CHECKED BY: BEM

CLIENT & PROJECT: **PROPOSED JUICE BAR**  
**ANDY BEAULIEU BUILDERS**

LOCATION: 561 FOREST AVENUE

TOWN: PORTLAND COUNTY: CUMBERLAND STATE: MAINE

PROJ. NO. 2017-208

**A-1**