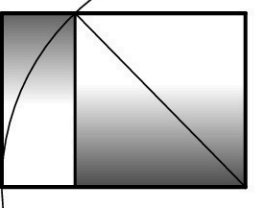


WHIPPLE -  
CALLENDER  
ARCHITECTS



136 PLEASANT AVE.  
PORTLAND, ME 04103  
P 207.715.2646  
F 207.715.3631  
www.whipplecallender.com

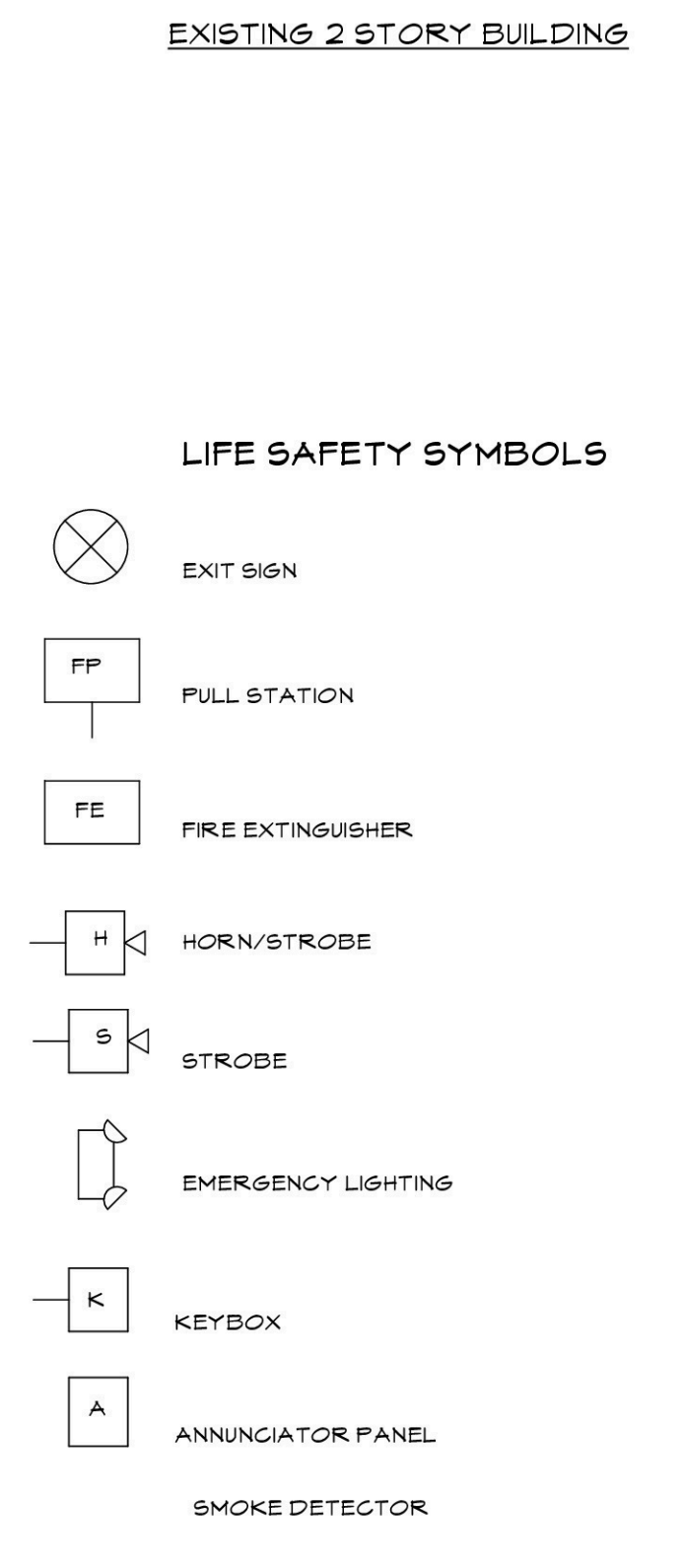
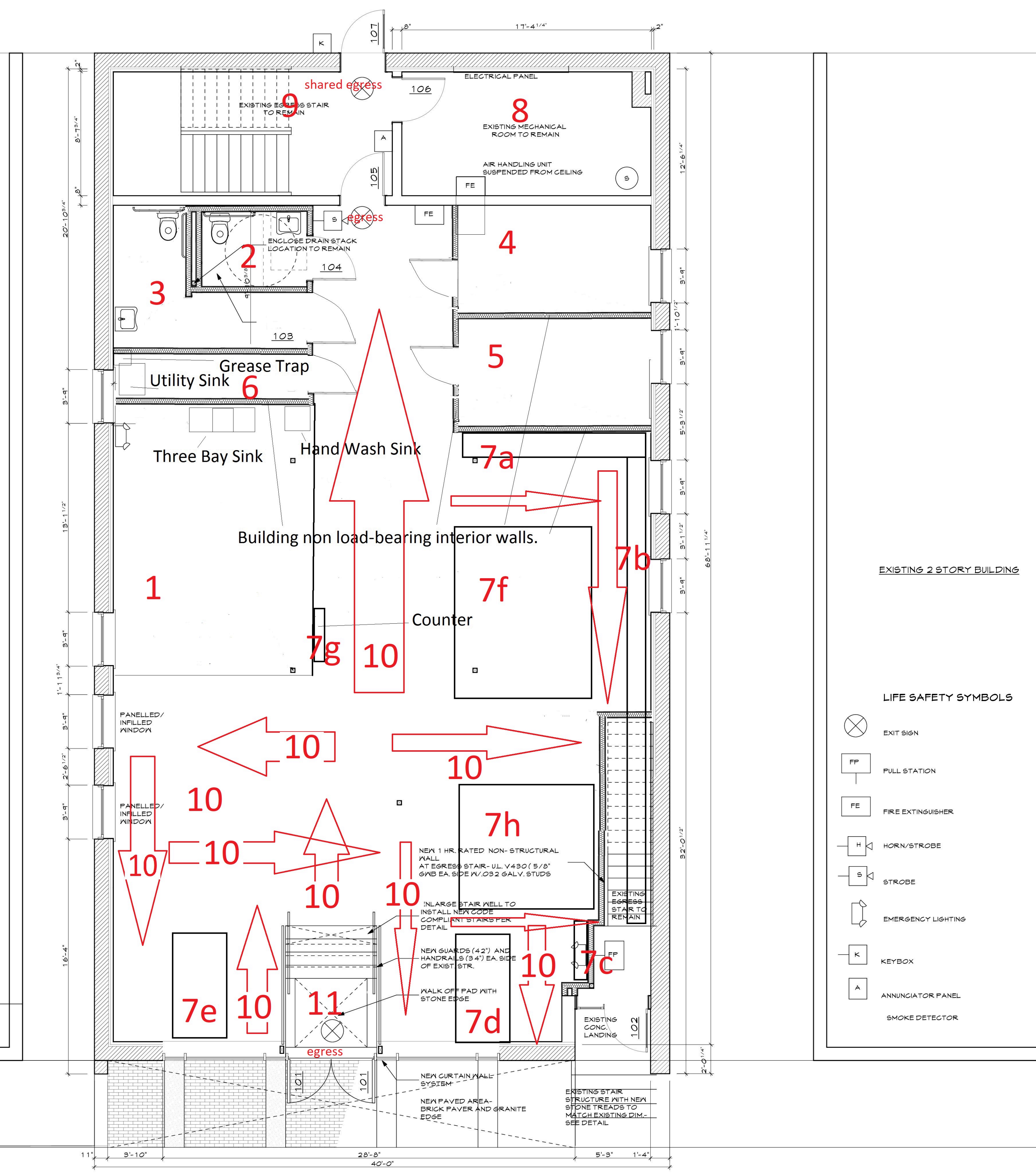
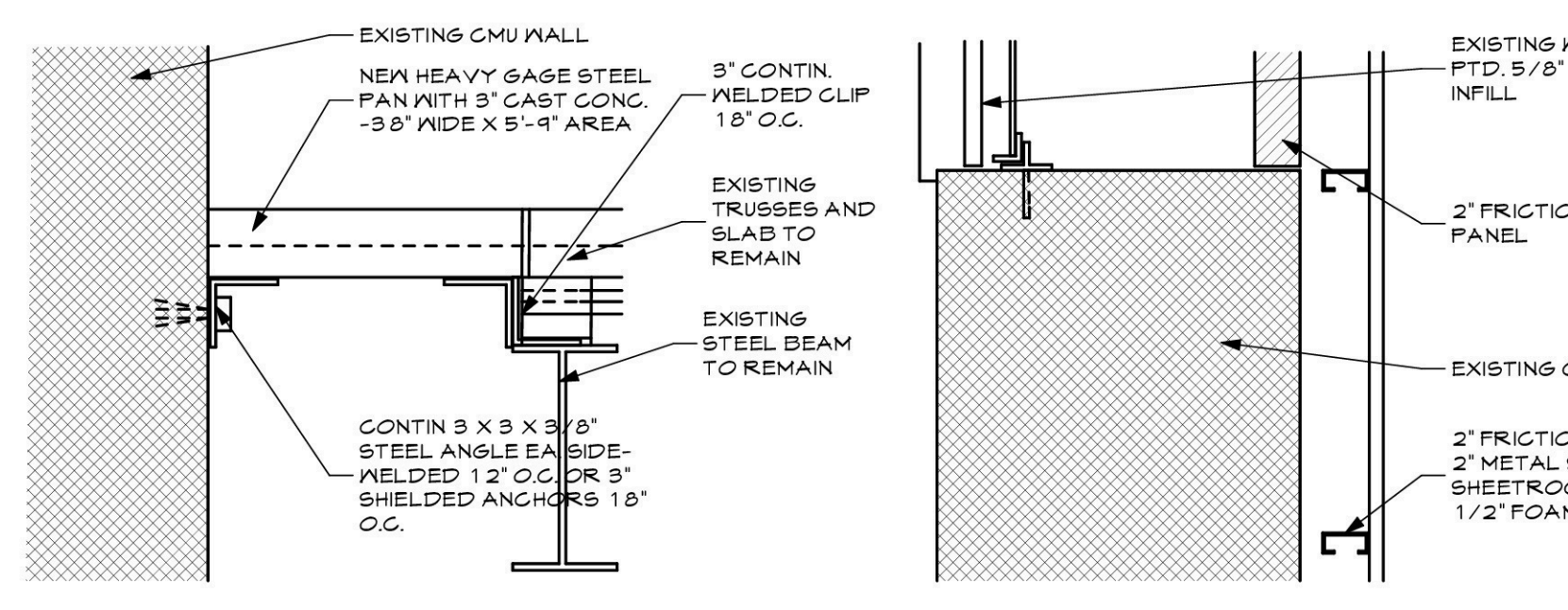
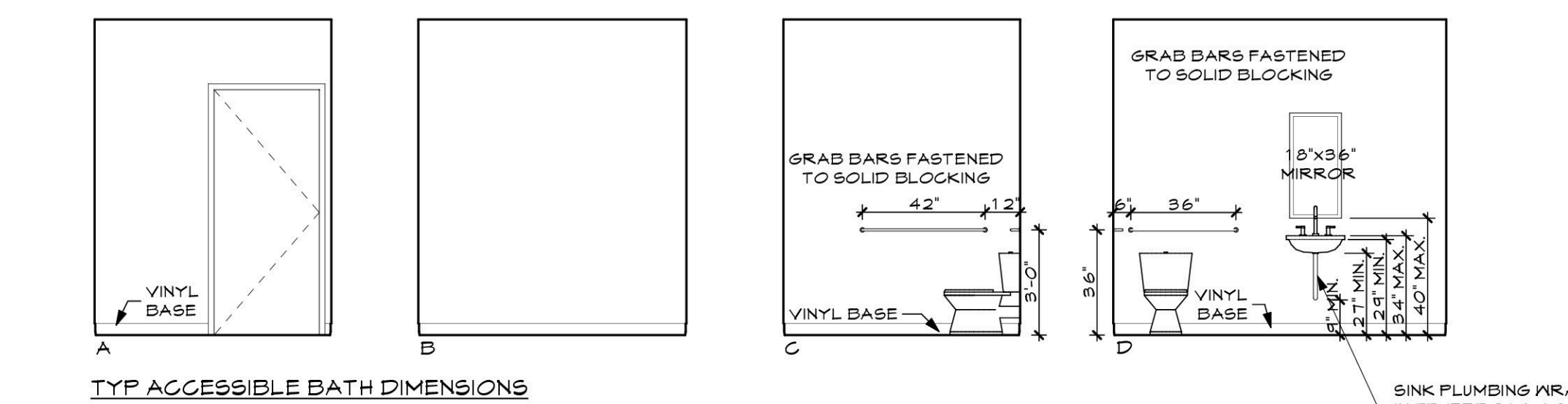
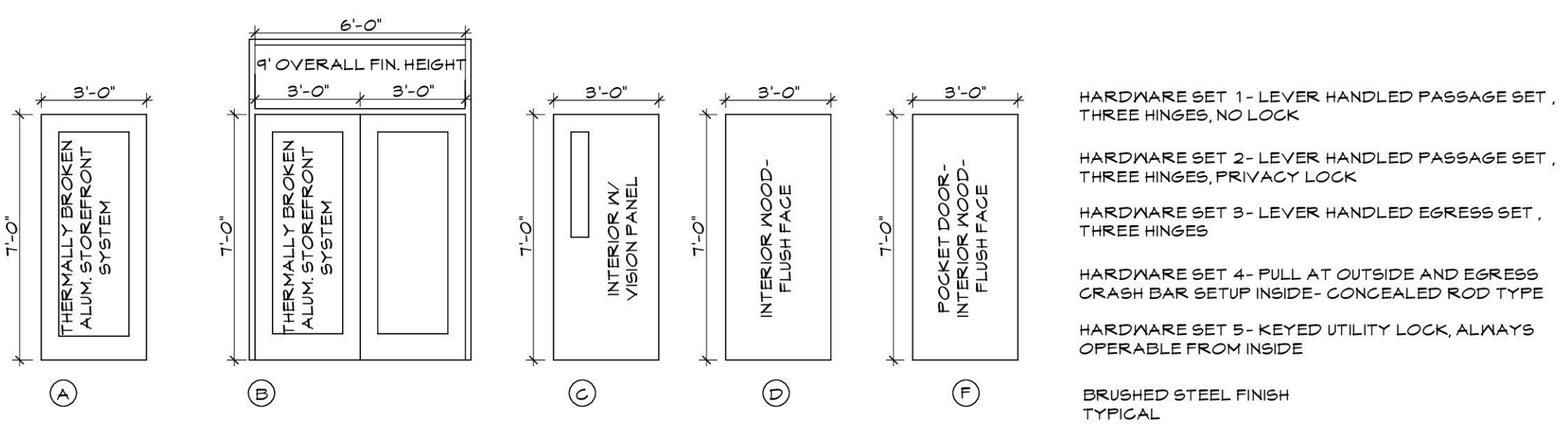
MARK	DATE	DESCRIPTION

DATE: 7.17.12  
CHECKED BY: JAD  
DRAWN BY: JAD  
JOB: 12 561  
SHEET TITLE: FIRST FLOOR PLAN

1/4" = 1'-0"

**A1.1**

MARK	LOCATION	UNIT SIZE	TYPE	HARDWARE FUNCTION	NOTES/REMARKS
101	RETAIL TO EXTERIOR	6'-0" x 7'-0"	A	4	THERMALLY BROKEN ALUMINUM STOREFRONT FRAME SYSTEM WITH TRANSOM ABOVE TYP. WITH CLEAR ANODIZED FINISH AND LOW E.
102	OFFICE TO EXTERIOR	3'-0" x 7'-0"	A	4	THERMALLY BROKEN ALUMINUM STOREFRONT FRAME SYSTEM WITH TRANSOM ABOVE TYP. WITH CLEAR ANODIZED FINISH AND LOW E.
103	RETAIL TO STORAGE	3'-0" x 7'-0"	D	2	
104	RETAIL TO BATHROOM	3'-0" x 7'-0"	D	2	
105	RETAIL TO EXIT	3'-0" x 7'-0"	C	3	1 HR. RATED EGRESS DOOR w/ RATED VISION PANEL
106	STAIR TO MECHANICAL	3'-0" x 7'-0"	D	5	1 HR. RATED MECH. DOOR
107	STAIR TO EXTERIOR	3'-0" x 7'-0"	A	4	THERMALLY BROKEN ALUMINUM STOREFRONT FRAME SYSTEM WITH TRANSOM ABOVE TYP. WITH CLEAR ANODIZED FINISH AND LOW E.
201	OFFICE SPACE TO STAIR	3'-0" x 7'-0"	C	3	
202	OFFICE TO BATHROOM	3'-0" x 7'-0"	D	2	
203	OFFICE TO BATHROOM	3'-0" x 7'-0"	D	2	
204	RETAIL TO EXIT	3'-0" x 7'-0"	C	3	1 HR. RATED EGRESS DOOR w/ RATED VISION PANEL
205	STAIR TO UTILITY	3'-0" x 7'-0"	D	5	1 HR. RATED DOOR
				4	



**1 FIRST FLOOR PLAN**  
SCALE: 1/4" = 1'-0"