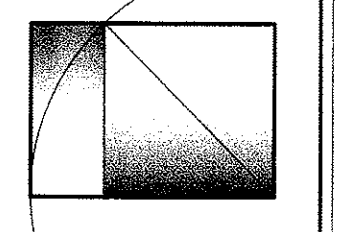


WHIPPLE - CALLENDER ARCHITECTS



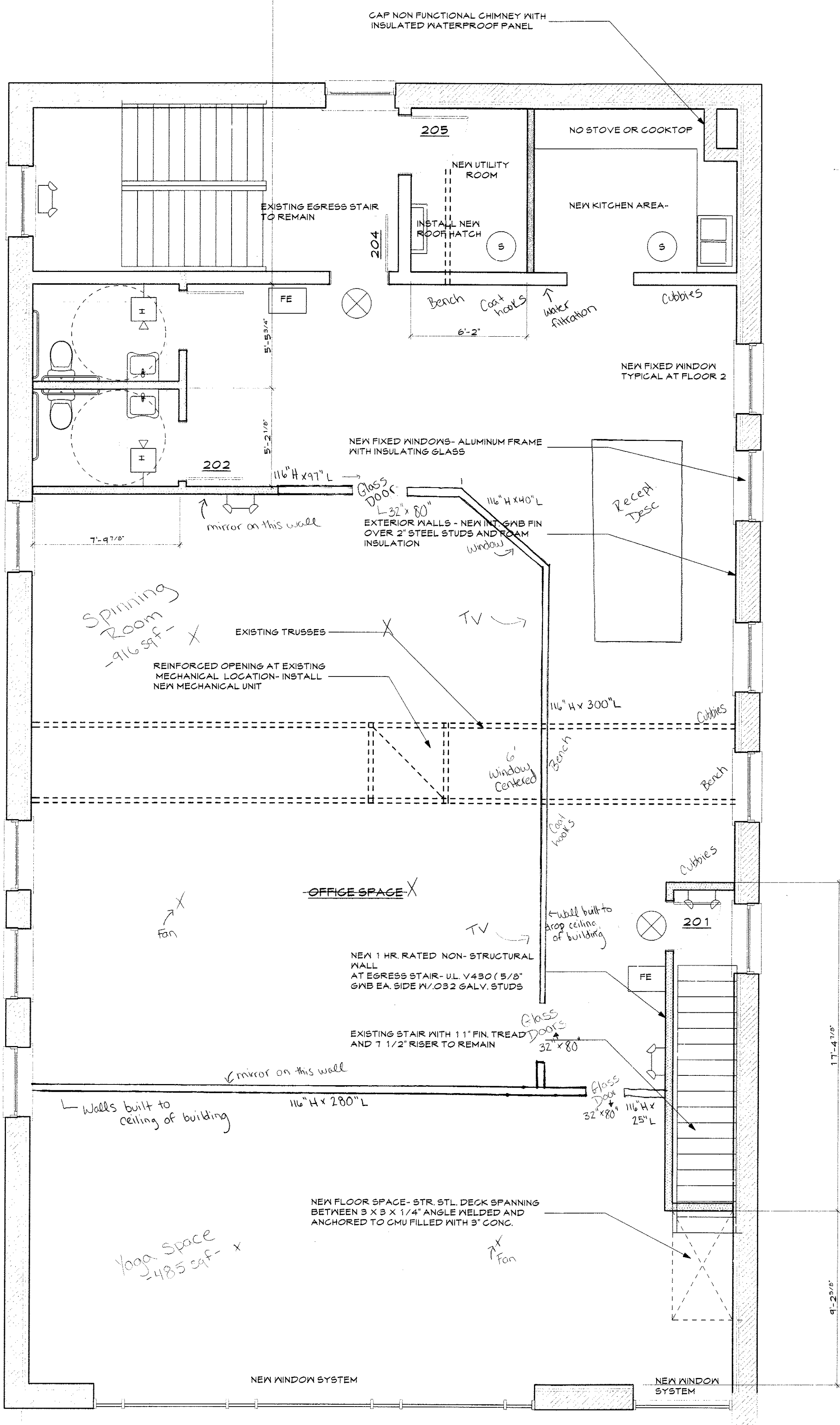
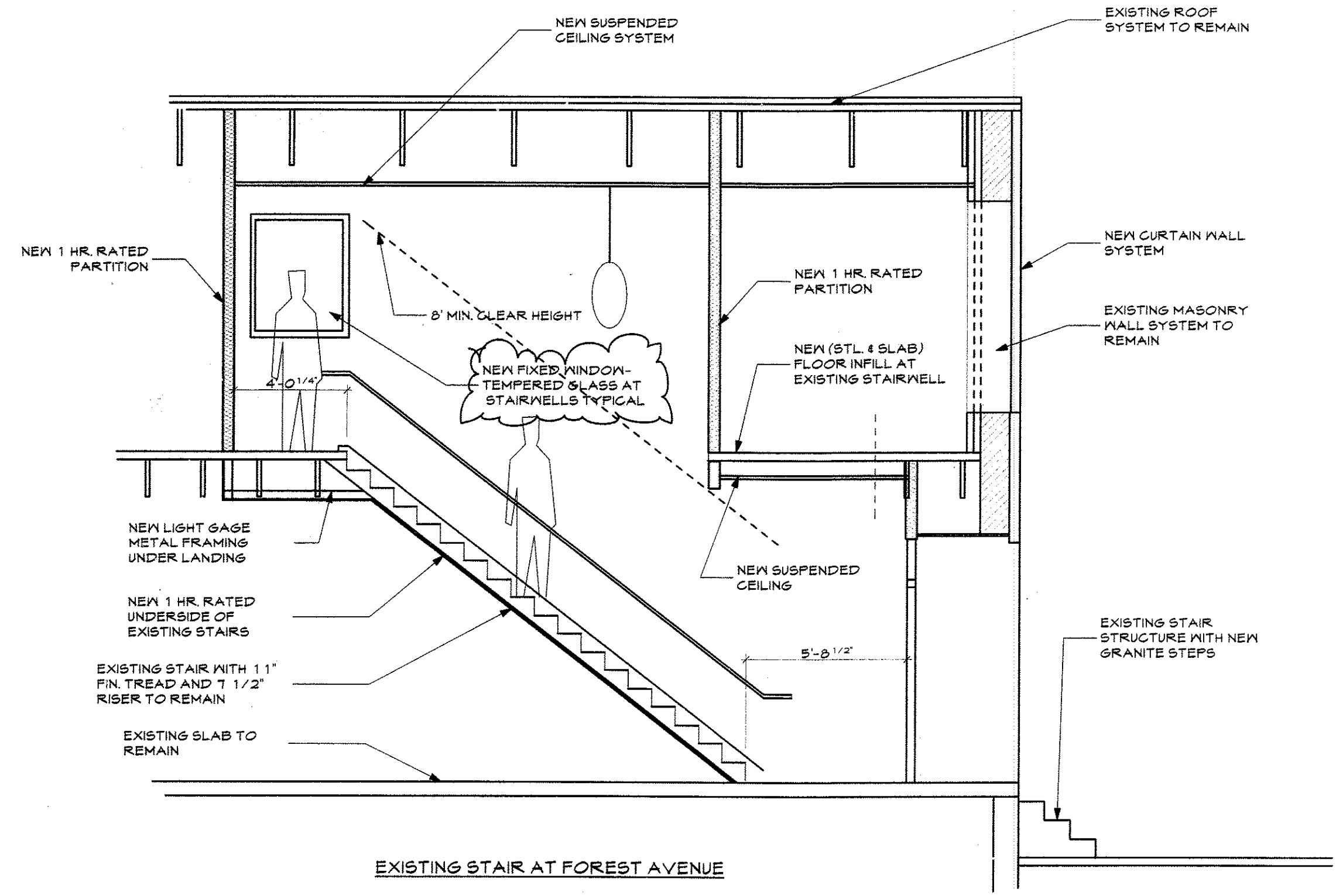
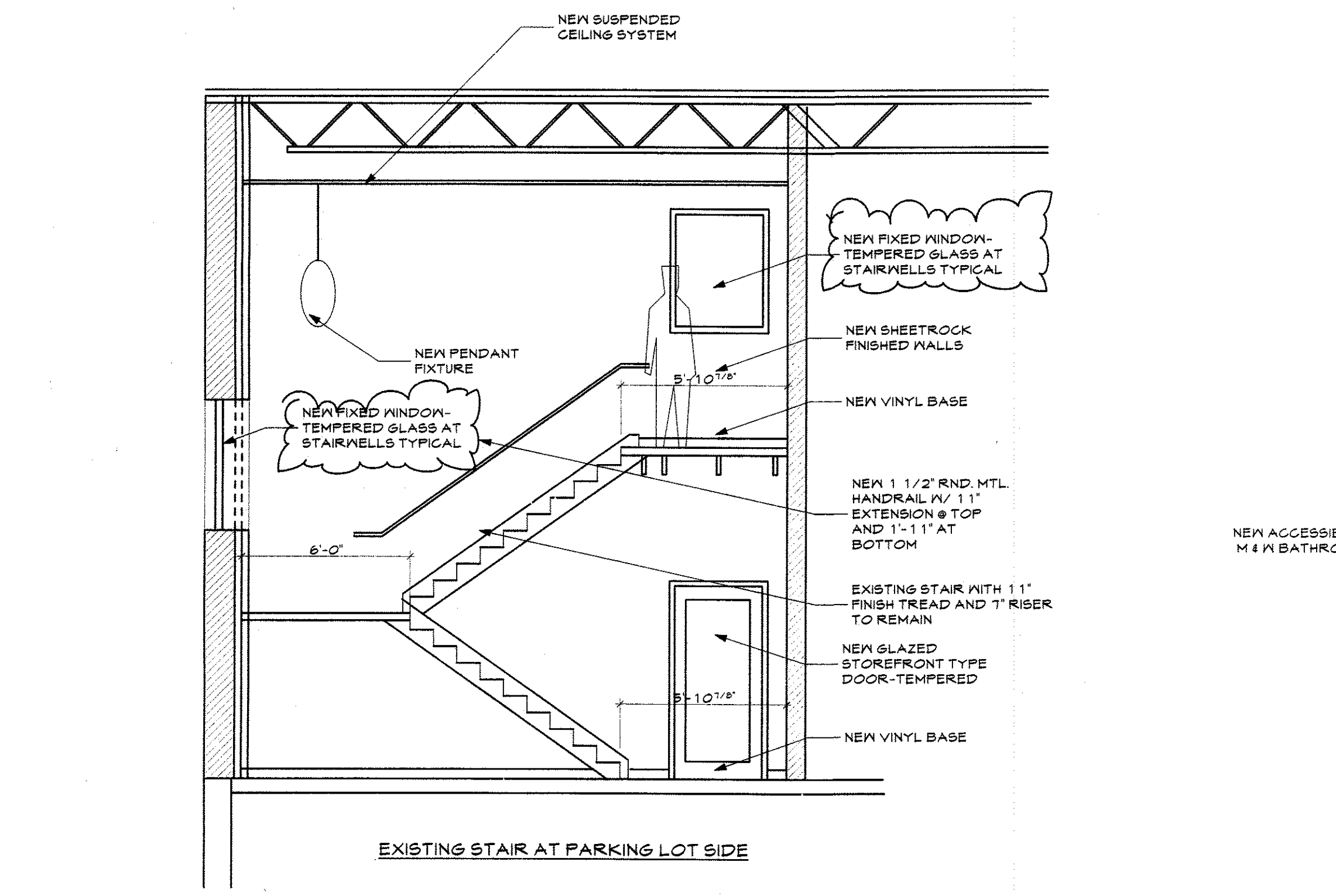
136 PLEASANT AVE  
PORTLAND, ME 04103  
P 207.775.2696  
F 207.775.9691  
www.whipplecallender.com

DATE	DESCRIPTION
8.29.12	FAO-12

FLR. 2 PLAN

# Reve Cycling Studio

Floors  
Yoga-wood  
Spinning-mats  
Reception-tba (hardwood/stone)

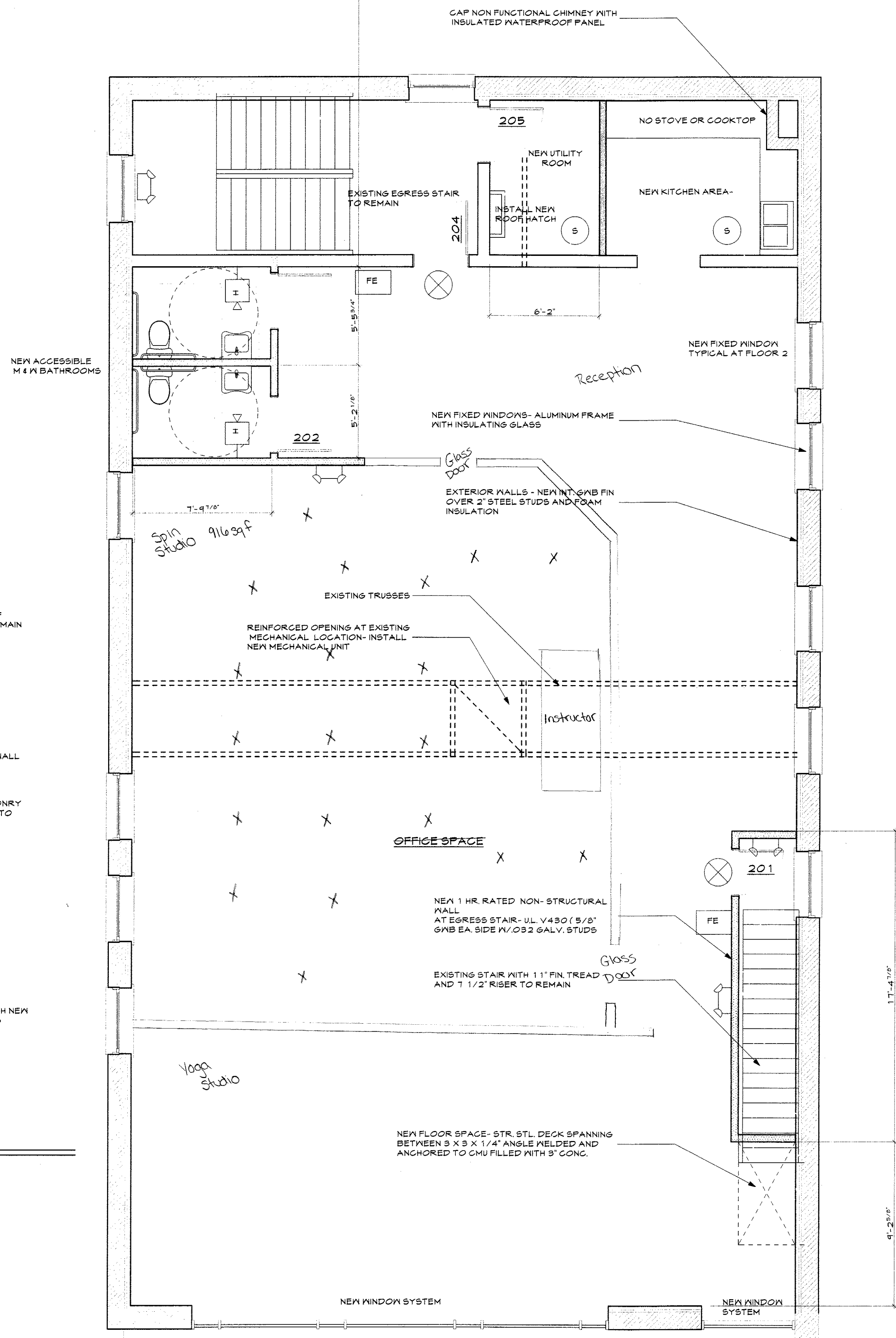
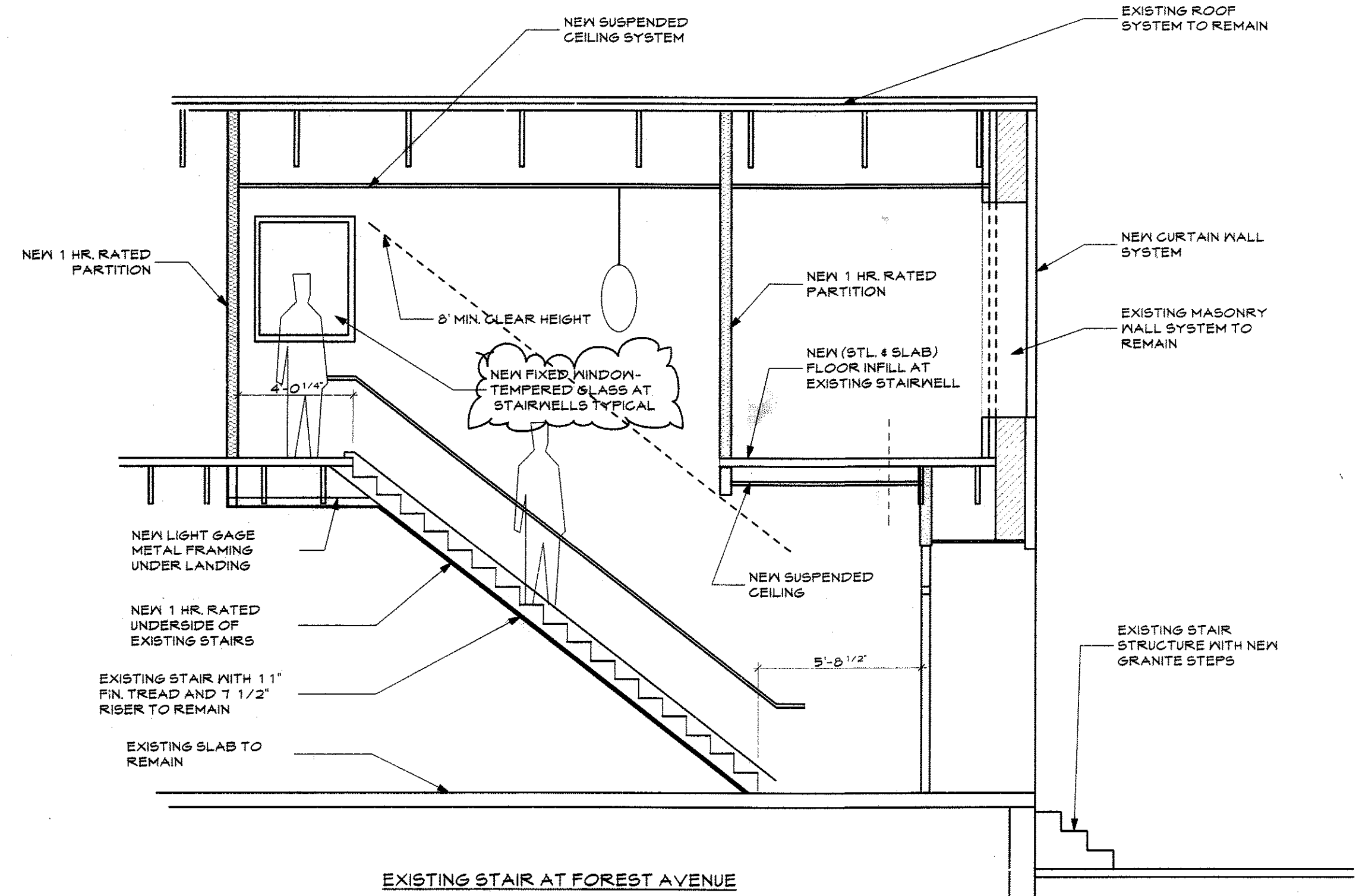
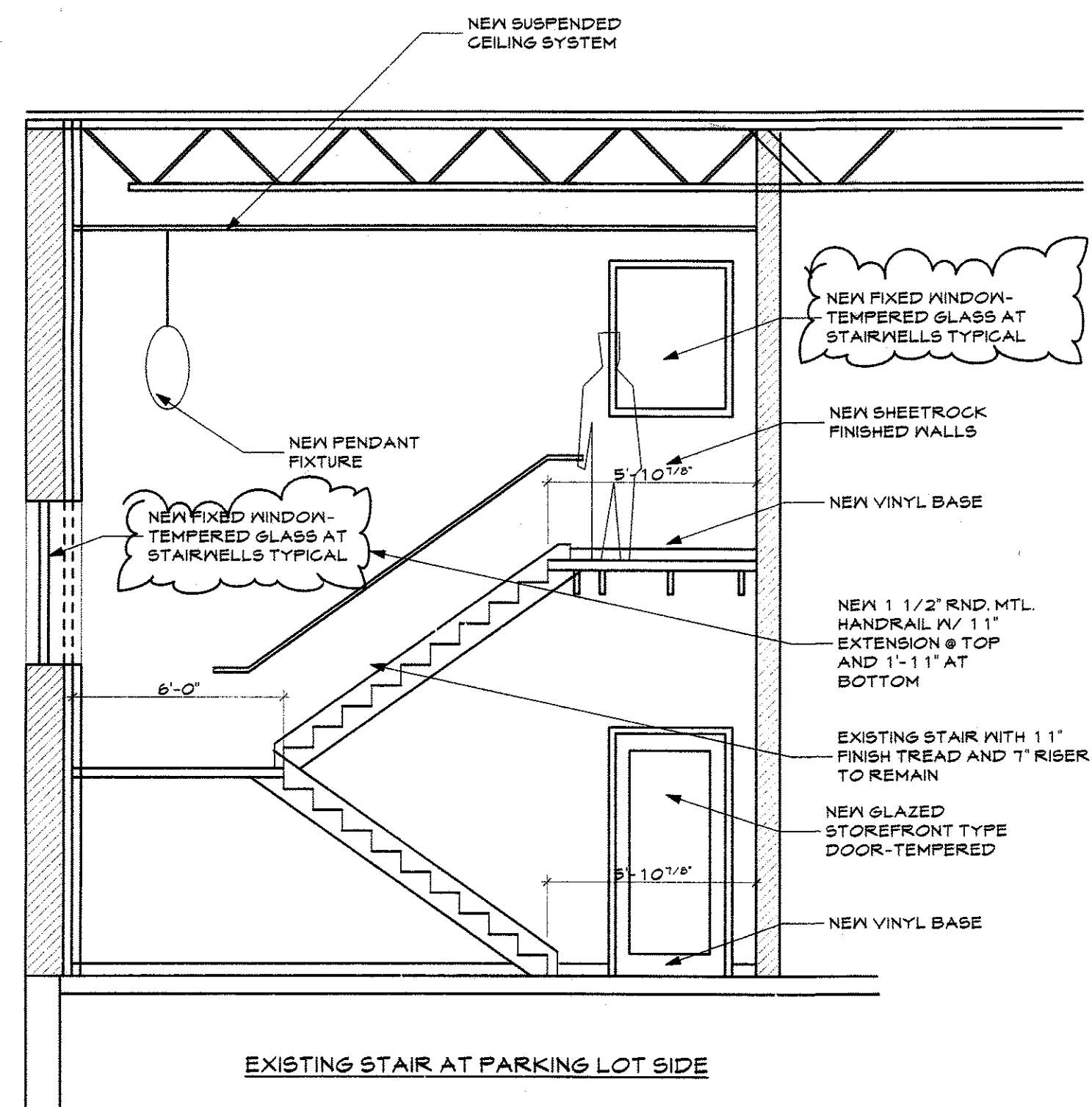


SECOND FLOOR PLAN  
SCALE: 1/4" = 1'-0"

### LIFE SAFETY SYMBOLS

- EXIT SIGN
- FULL STATION
- FIRE EXTINGUISHER
- HORN/STROBE
- STROBE
- EMERGENCY LIGHTING
- KEYBOX
- ANNUNCIATOR PANEL
- SMOKE DETECTOR

- Drop ceiling already in place
- Parking lot with 10 designated parking spots plus on street parking
- Constructed walls will have 2" by 4" steel stud frame, two layers of drywall, to help soundproof the space, and mineral fiberglass insulation
- Glass Doors with aluminum frames



Bike size  
21\"/>

- LIFE SAFETY SYMBOLS**
- EXIT SIGN
  - PULL STATION
  - FIRE EXTINGUISHER
  - HORN/STROBE
  - STROBE
  - EMERGENCY LIGHTING
  - KEYBOX
  - ANNUNCIATOR PANEL
  - SMOKE DETECTOR

**SECOND FLOOR PLAN**  
SCALE: 1/4" = 1'-0"

**561 FOREST AVENUE**  
PORTLAND, MAINE

561 FOREST AVENUE

LICENSED ARCHITECT  
**JOSEPH A. DELANEY**  
No. 1722  
STATE OF MAINE

**WHIPPLE — CALLENDER ARCHITECTS**

136 PLEASANT AVE.  
PORTLAND, ME 04103  
P 207.775.2646  
F 207.775.9691  
www.whipplecallender.com

MARK	DATE	DESCRIPTION

DATE: 8.29.12  
CHECKED BY: JAD  
DRAWN BY: JAD  
JOB: FAO-12  
SHEET TITLE: FLR. 2 PLAN

A1.2