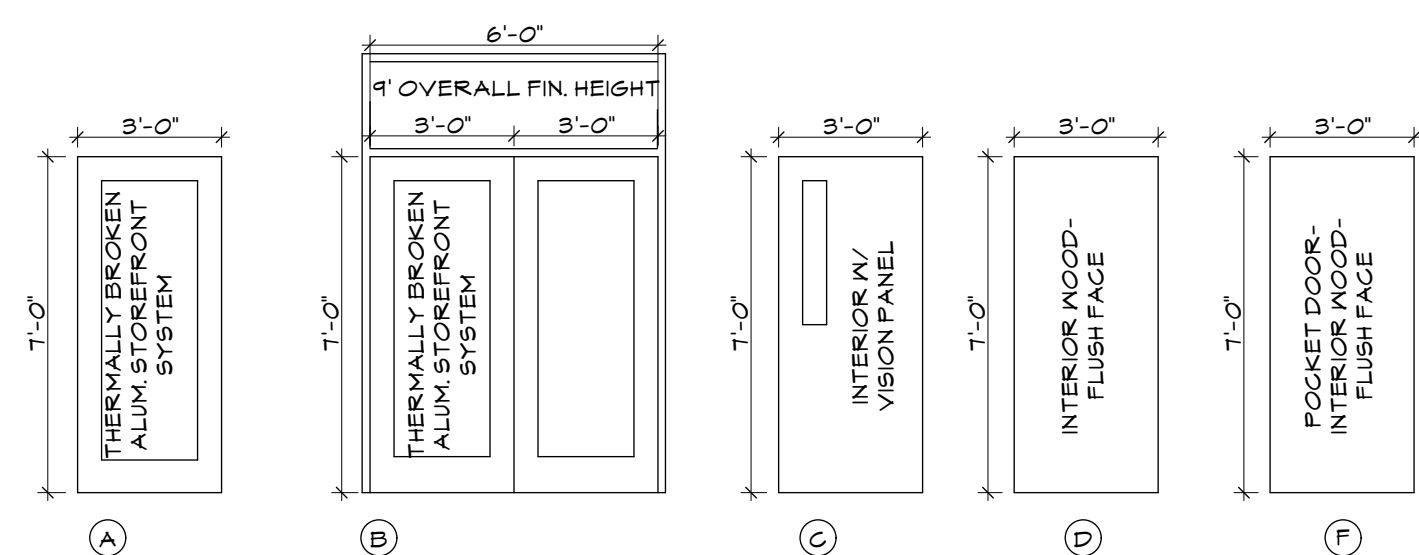
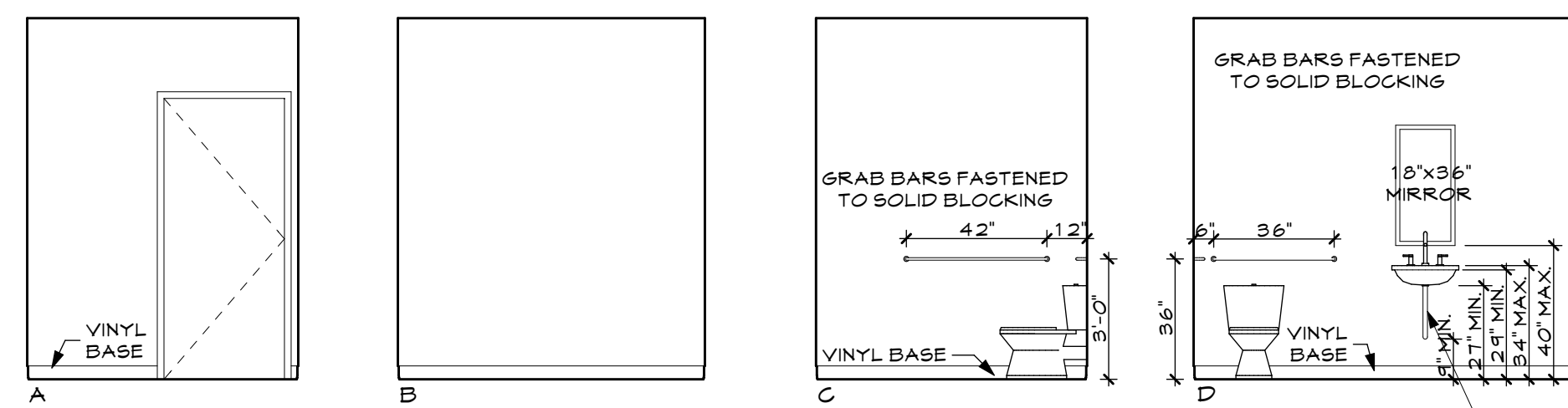


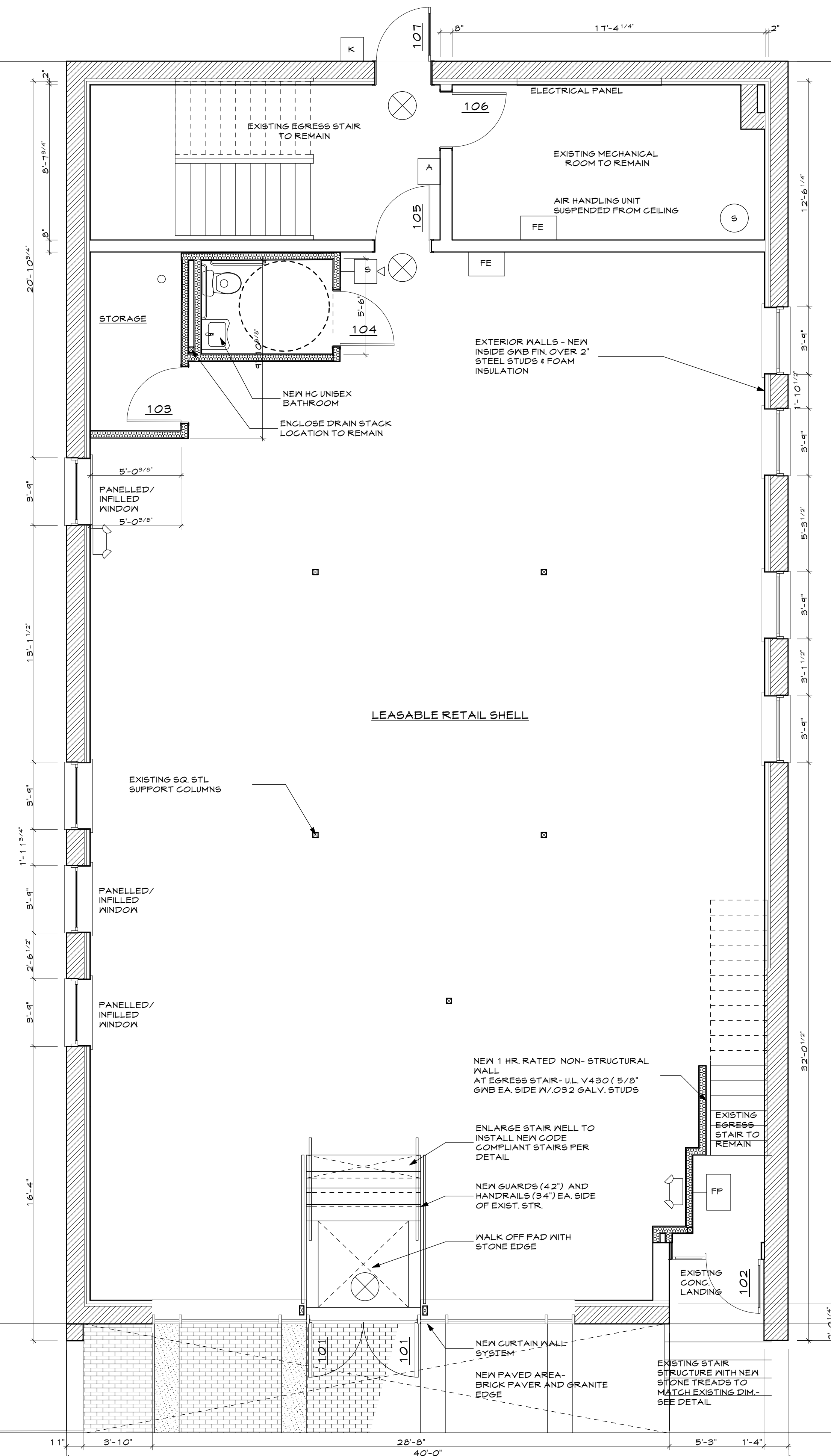
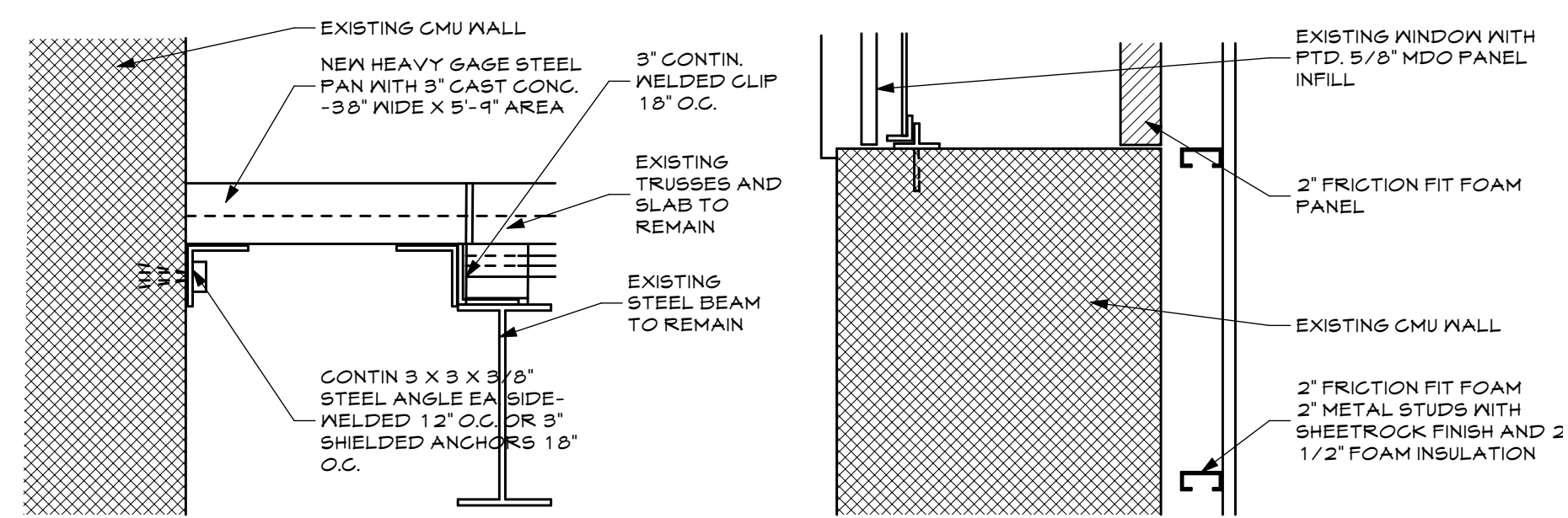
MARK	LOCATION	UNIT SIZE	TYPE	HARDWARE FUNCTION	NOTES/REMARKS
101	RETAIL TO EXTERIOR	6'-0" x 7'-0"	A	4	THERMALLY BROKEN ALUMINUM STOREFRONT FRAME SYSTEM WITH TRANSOM ABOVE TYP. WITH CLEAR ANODIZED FINISH AND LOW E.
102	OFFICE TO EXTERIOR	3'-0" x 7'-0"	A	4	THERMALLY BROKEN ALUMINUM STOREFRONT FRAME SYSTEM WITH TRANSOM ABOVE TYP. WITH CLEAR ANODIZED FINISH AND LOW E.
103	RETAIL TO STORAGE	3'-0" x 7'-0"	D	2	
104	RETAIL TO BATHROOM	3'-0" x 7'-0"	D	2	
105	RETAIL TO EXIT	3'-0" x 7'-0"	C	3	1 HR. RATED EGRESS DOOR W/ RATED VISION PANEL
106	STAIR TO MECHANICAL	3'-0" x 7'-0"	D	5	1 HR. RATED MECH. DOOR
107	STAIR TO EXTERIOR	3'-0" x 7'-0"	A	4	THERMALLY BROKEN ALUMINUM STOREFRONT FRAME SYSTEM WITH TRANSOM ABOVE TYP. WITH CLEAR ANODIZED FINISH AND LOW E.
201	OFFICE SPACE TO STAIR	3'-0" x 7'-0"	C	3	
202	OFFICE TO BATHROOM	3'-0" x 7'-0"	D	2	
203	OFFICE TO BATHROOM	3'-0" x 7'-0"	D	2	
204	RETAIL TO EXIT	3'-0" x 7'-0"	C	3	1 HR. RATED EGRESS DOOR W/ RATED VISION PANEL
205	STAIR TO UTILITY	3'-0" x 7'-0"	D	5	1 HR. RATED DOOR
				4	



HARDWARE SET 1 - LEVER HANDLED PASSAGE SET, THREE HINGES, NO LOCK
 HARDWARE SET 2 - LEVER HANDLED PASSAGE SET, THREE HINGES, PRIVACY LOCK
 HARDWARE SET 3 - LEVER HANDLED EGRESS SET, THREE HINGES
 HARDWARE SET 4 - PULL AT OUTSIDE AND EGRESS CRASH BAR SETUP INSIDE - CONCEALED ROD TYPE
 HARDWARE SET 5 - KEYED UTILITY LOCK, ALWAYS OPERABLE FROM INSIDE
 BRUSHED STEEL FINISH TYPICAL



TYP ACCESSIBLE BATH DIMENSIONS



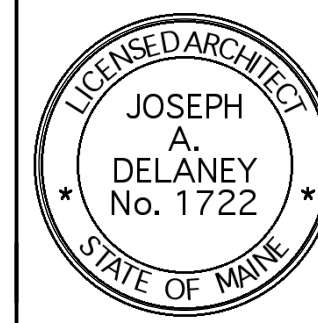
EXISTING 2 STORY BUILDING

LIFE SAFETY SYMBOLS

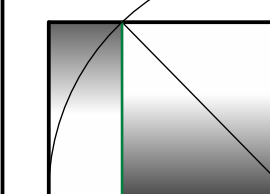
- EXIT SIGN
- FULL STATION
- FIRE EXTINGUISHER
- HORN/SSTROBE
- STROBE
- EMERGENCY LIGHTING
- KEYBOX
- ANNUNCIATOR PANEL
- SMOKE DETECTOR

1 FIRST FLOOR PLAN
 SCALE: 1/4" = 1'-0"

561 FOREST AVENUE
 PORTLAND, MAINE



WHIPPLE -
 CALLENDER
 ARCHITECTS

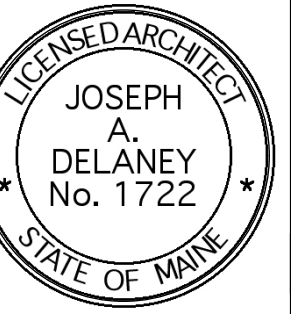


136 PLEASANT AVE.
 PORTLAND, ME 04103
 P 207.115.2616
 F 207.115.5631
 www.whipplecallender.com

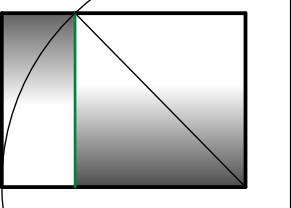
MARK	DATE	DESCRIPTION
	08.29.12	

DATE: 08.29.12
 CHECKED BY: JAD
 DRAWN BY: JAD
 JOB: FAO-12
 SHEET TITLE: FIRST FLOOR PLAN

A1.1



WHIPPLE —
CALLENDER
ARCHITECTS

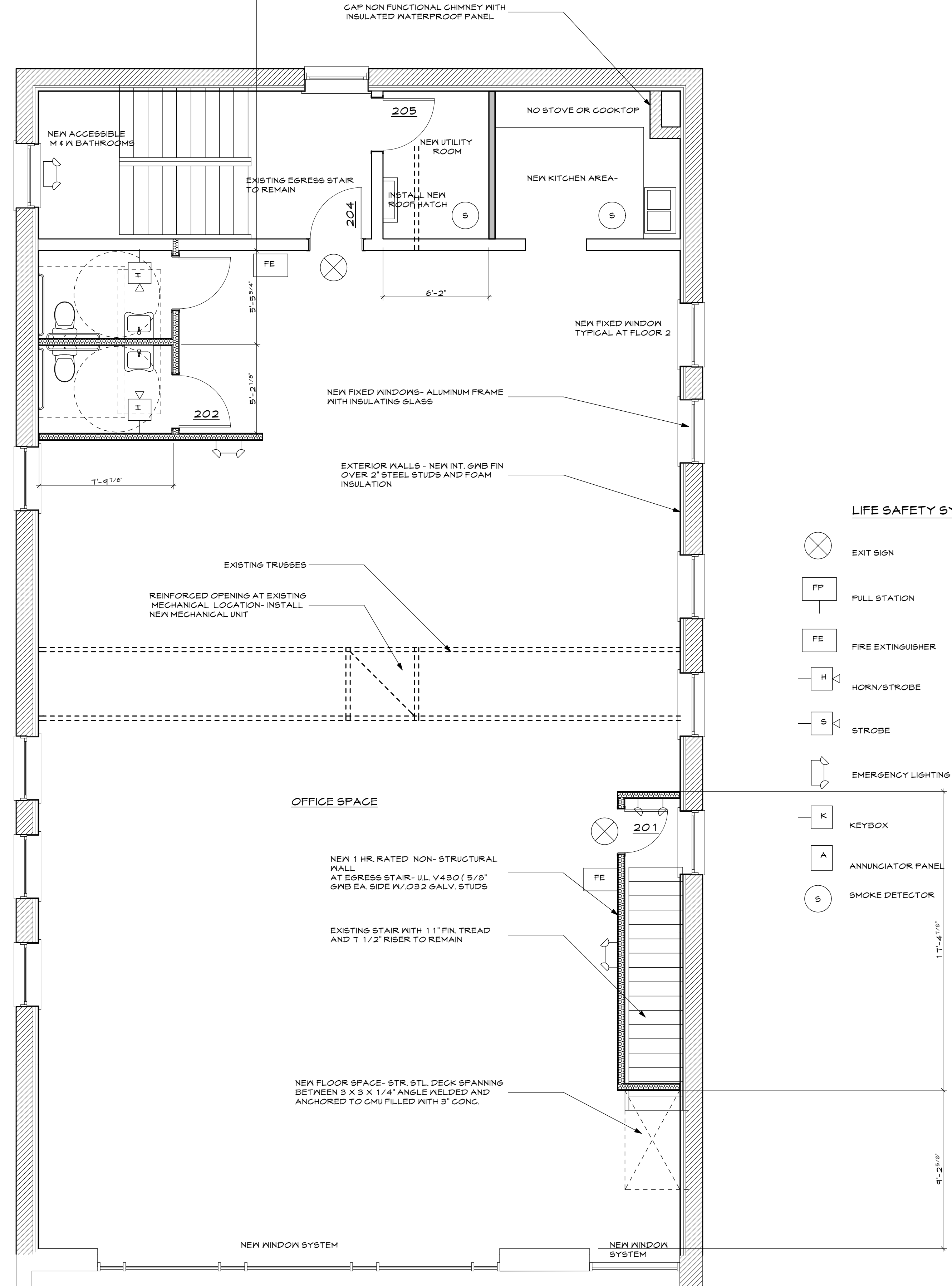
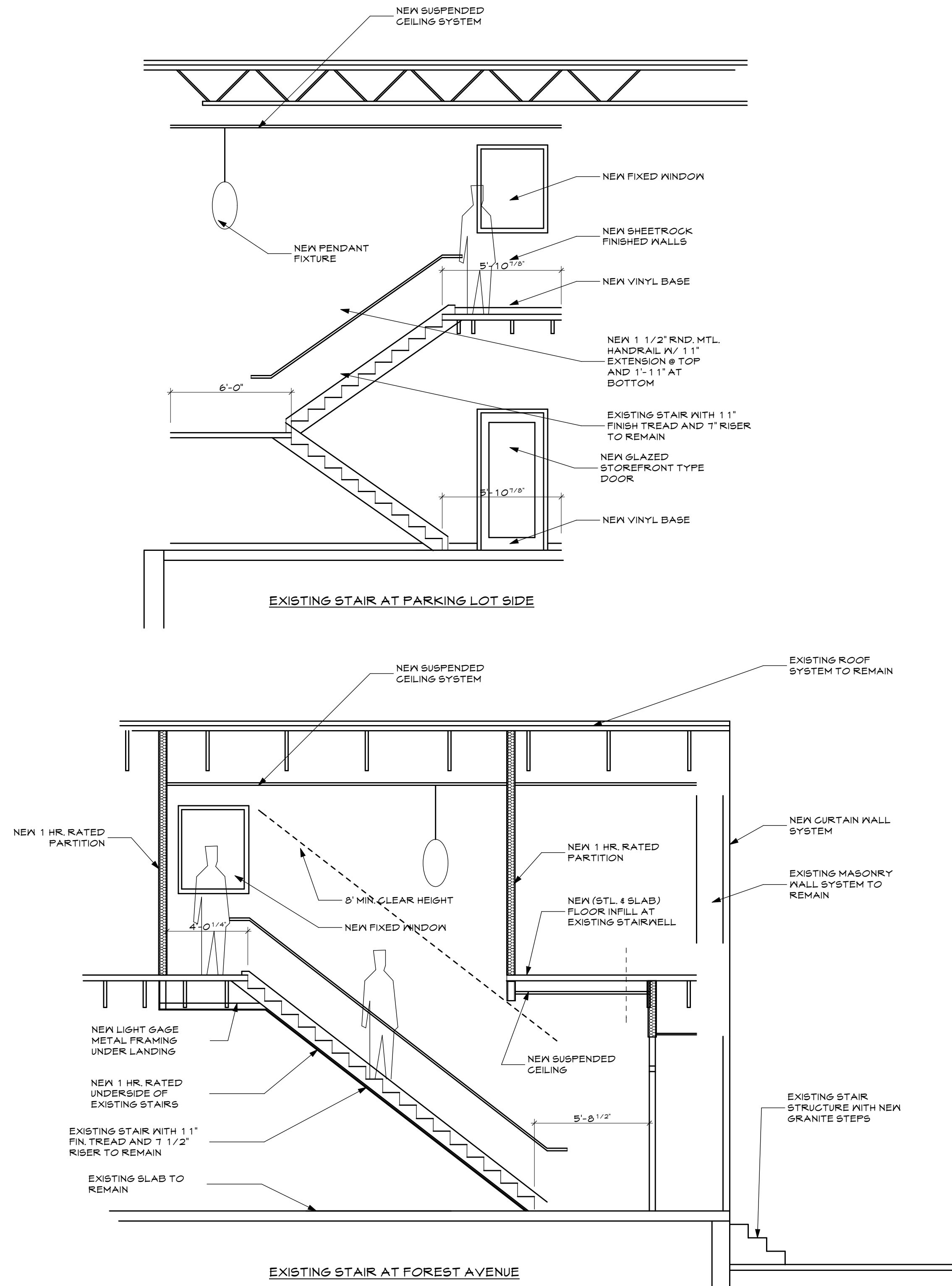


136 PLEASANT AVE.
PORTLAND, ME 04103
P 207.115.2646
F 207.115.5631
www.whipplecallender.com

MARK	DATE	DESCRIPTION

DATE:	8.29.12
CHECKED BY:	JAD
DRAWN BY:	JAD
JOB:	FAO-12
SHEET TITLE:	FLR. 2 PLAN

FLR. 2 PLAN

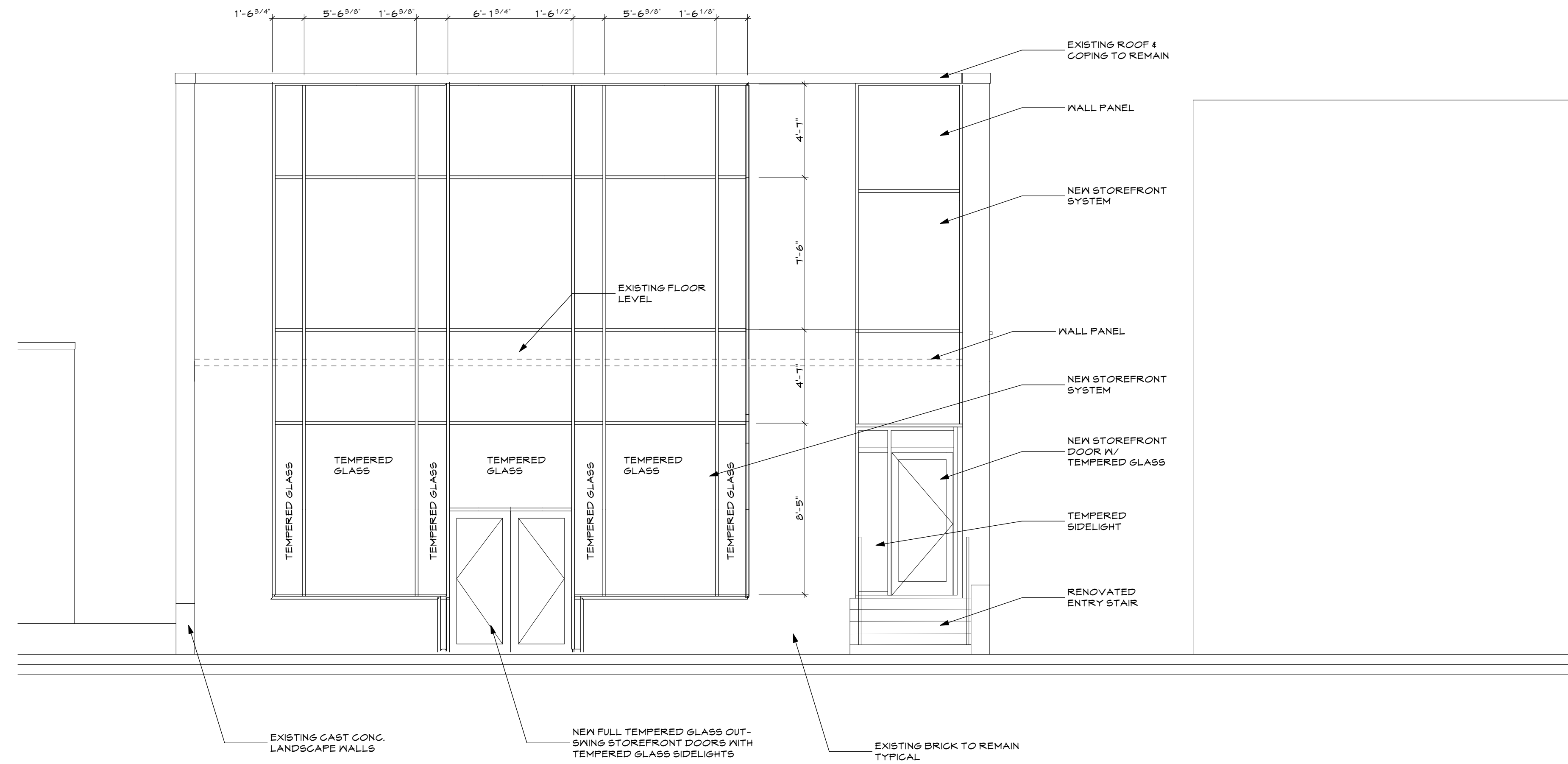


LIFE SAFETY SYMBOLS

- EXIT SIGN
- FULL STATION
- FIRE EXTINGUISHER
- HORN/STROBE
- STROBE
- EMERGENCY LIGHTING
- KEYBOX
- ANNUNCIATOR PANEL
- SMOKE DETECTOR

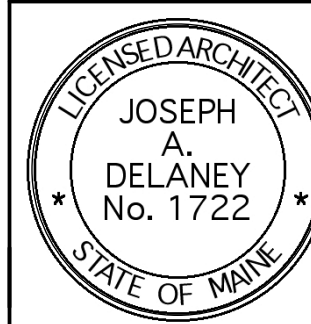
1 SECOND FLOOR PLAN
A1.2 SCALE: 1/4" = 1'-0"

THIS DRAWING IS AN INSTRUMENT OF SERVICE AND SHALL REMAIN THE PROPERTY OF WHIPPLE CALLENDER ARCHITECTS. IT SHALL NOT BE USED FOR ANY OTHER PURPOSE THAT FOR WHICH IT IS SPECIFICALLY FURNISHED.

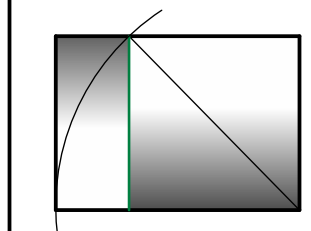


1 Front Elevation
 A2.1 SCALE: 1/4" = 1'-0"

561 FOREST AVENUE
 PORTLAND, MAINE
 561 FOREST AVENUE



WHIPPLE —
 CALLENDER
 ARCHITECTS

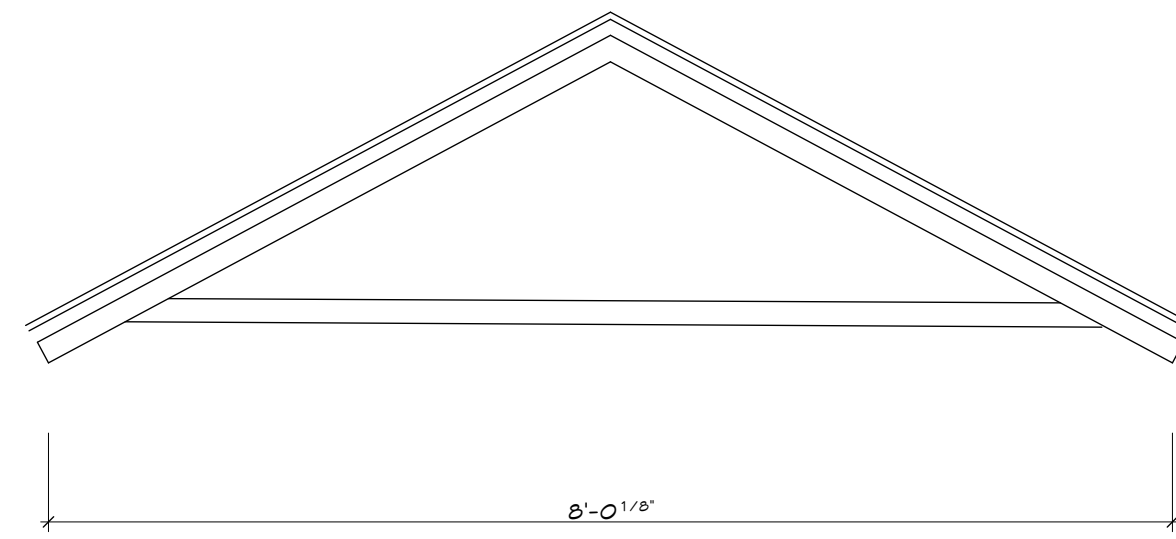
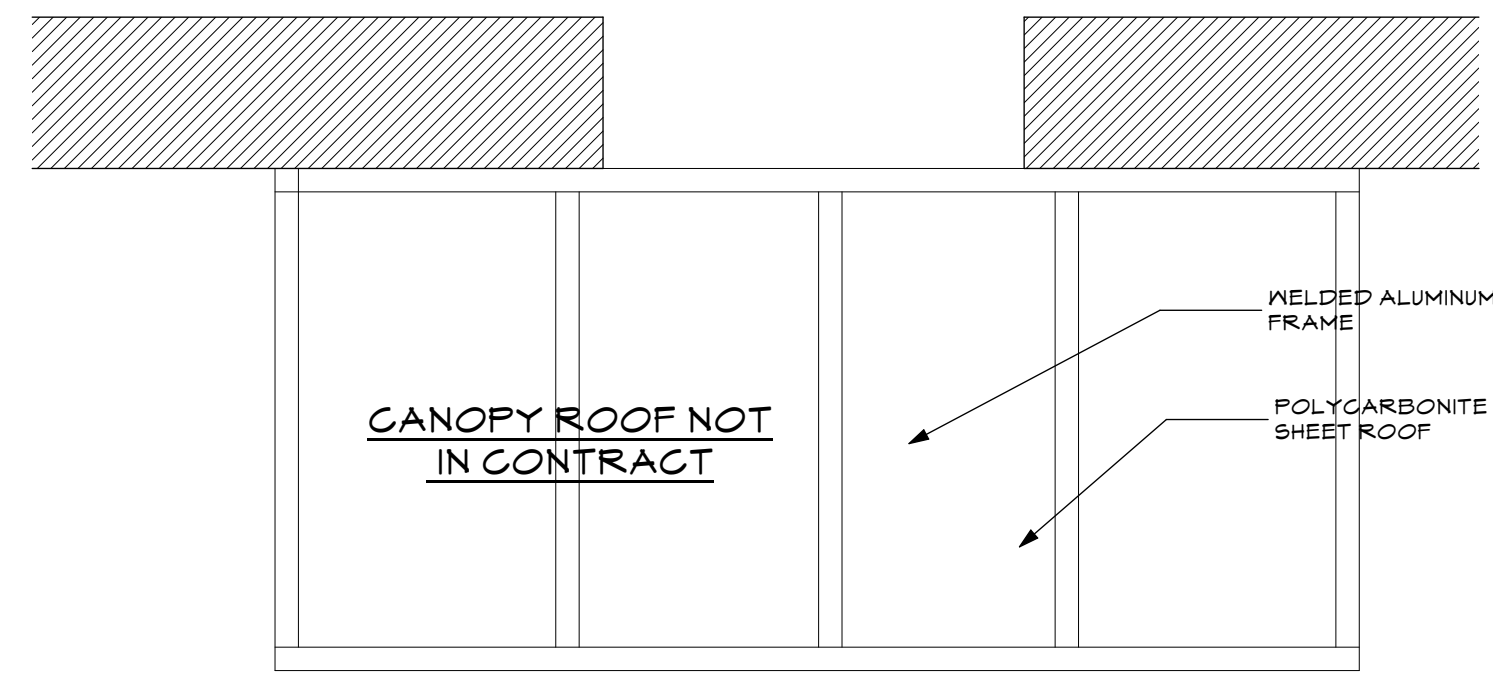


136 PLEASANT AVE.
 PORTLAND, ME 04103
 P 207.115.2616
 F 207.115.5631
 www.whipplecallender.com

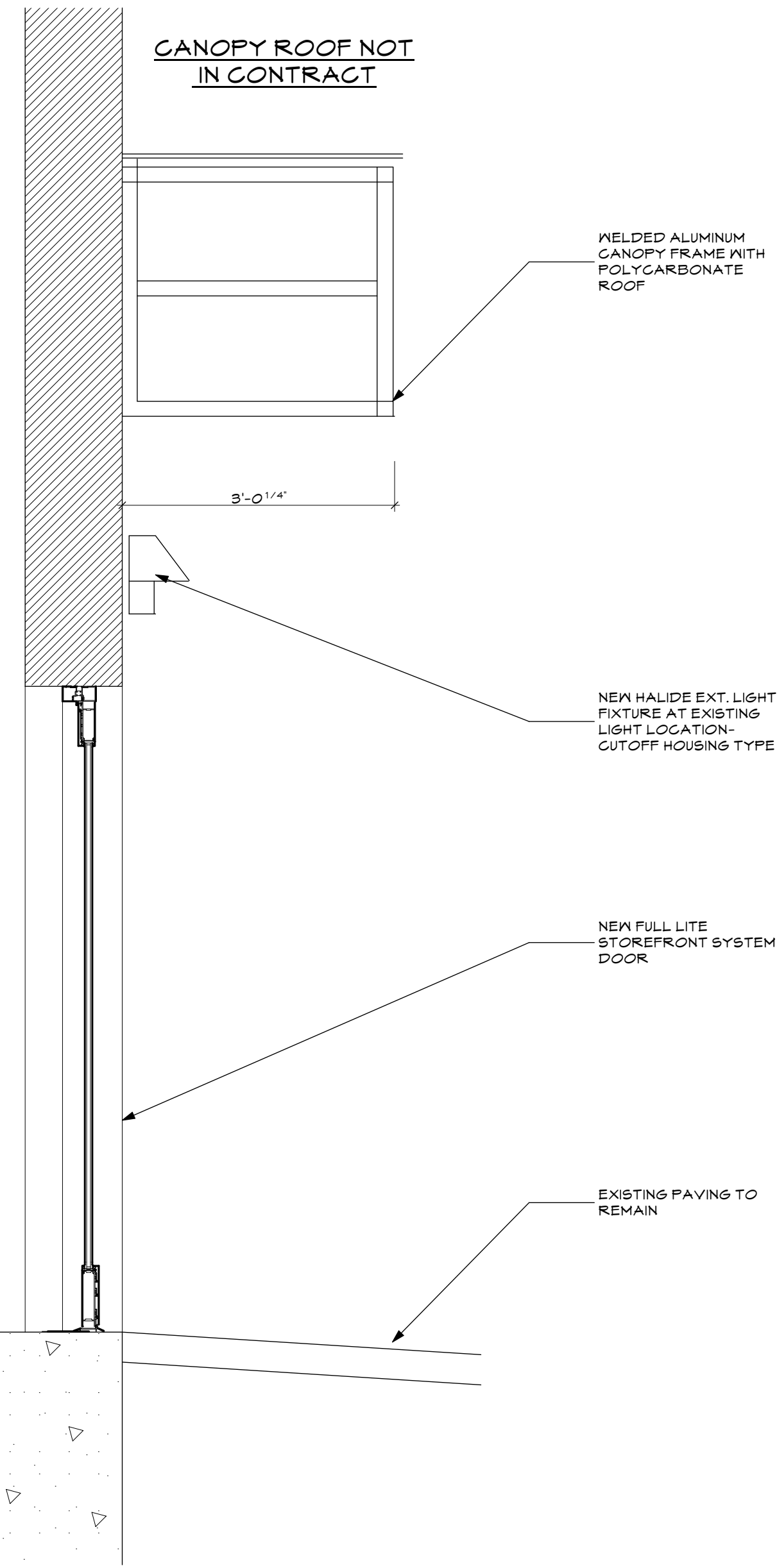
DESCRIPTION	DATE	MARK

DATE: 8.29.12
 CHECKED BY: JAD
 DRAWN BY: JAD
 JOB: FAO-12
 SHEET TITLE: ELEVATION

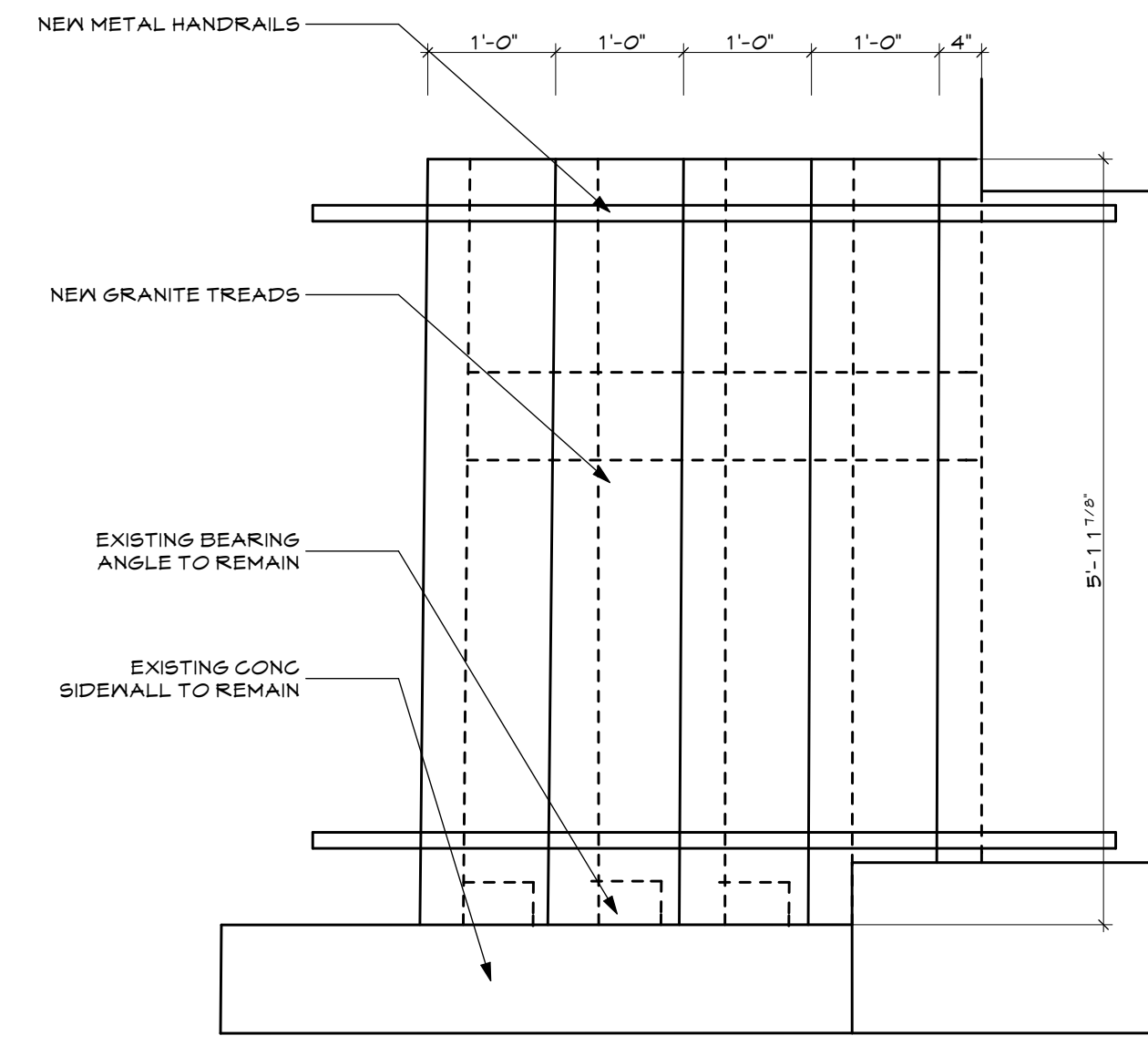
A2.1



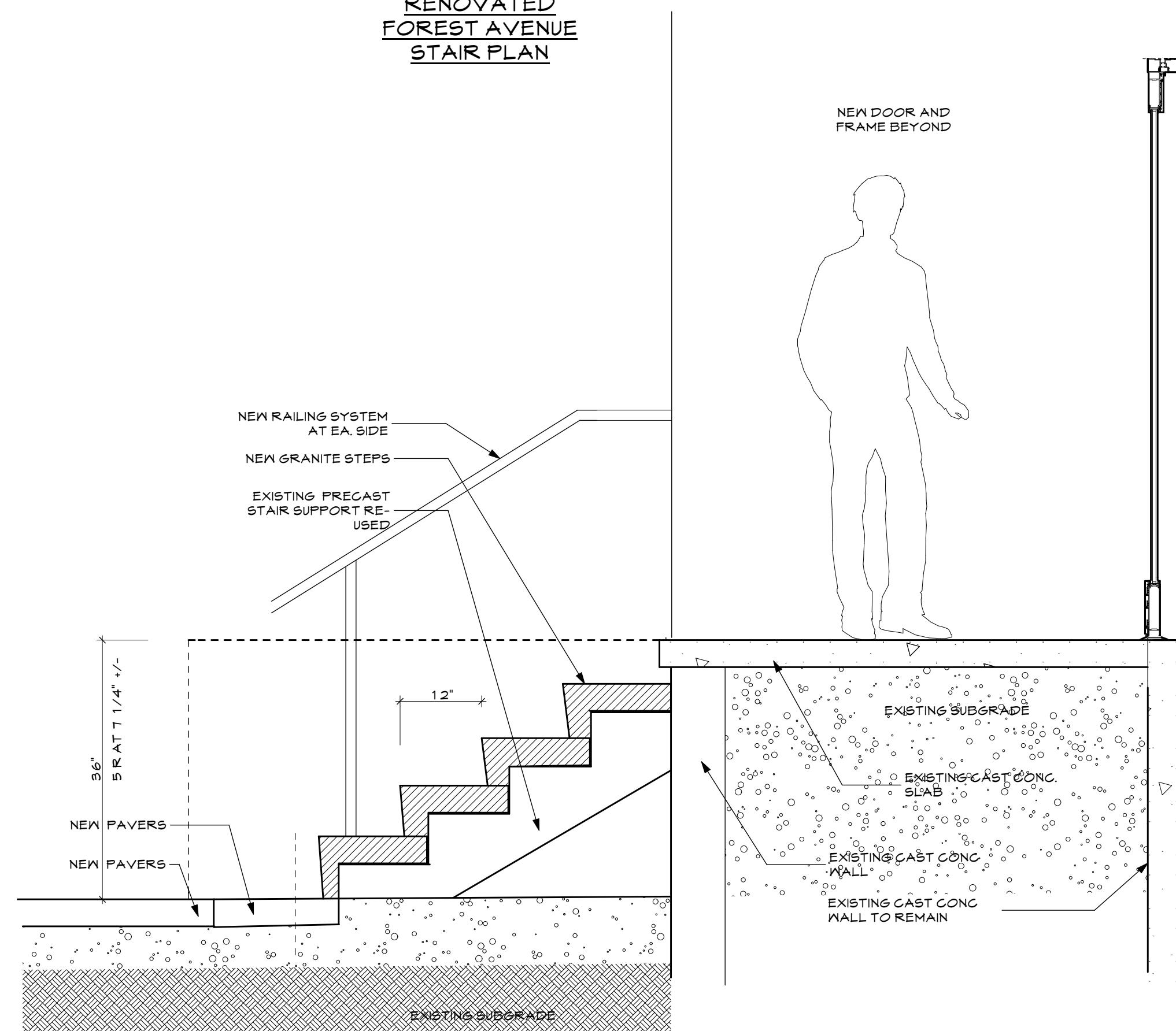
CANOPY ROOF NOT IN CONTRACT



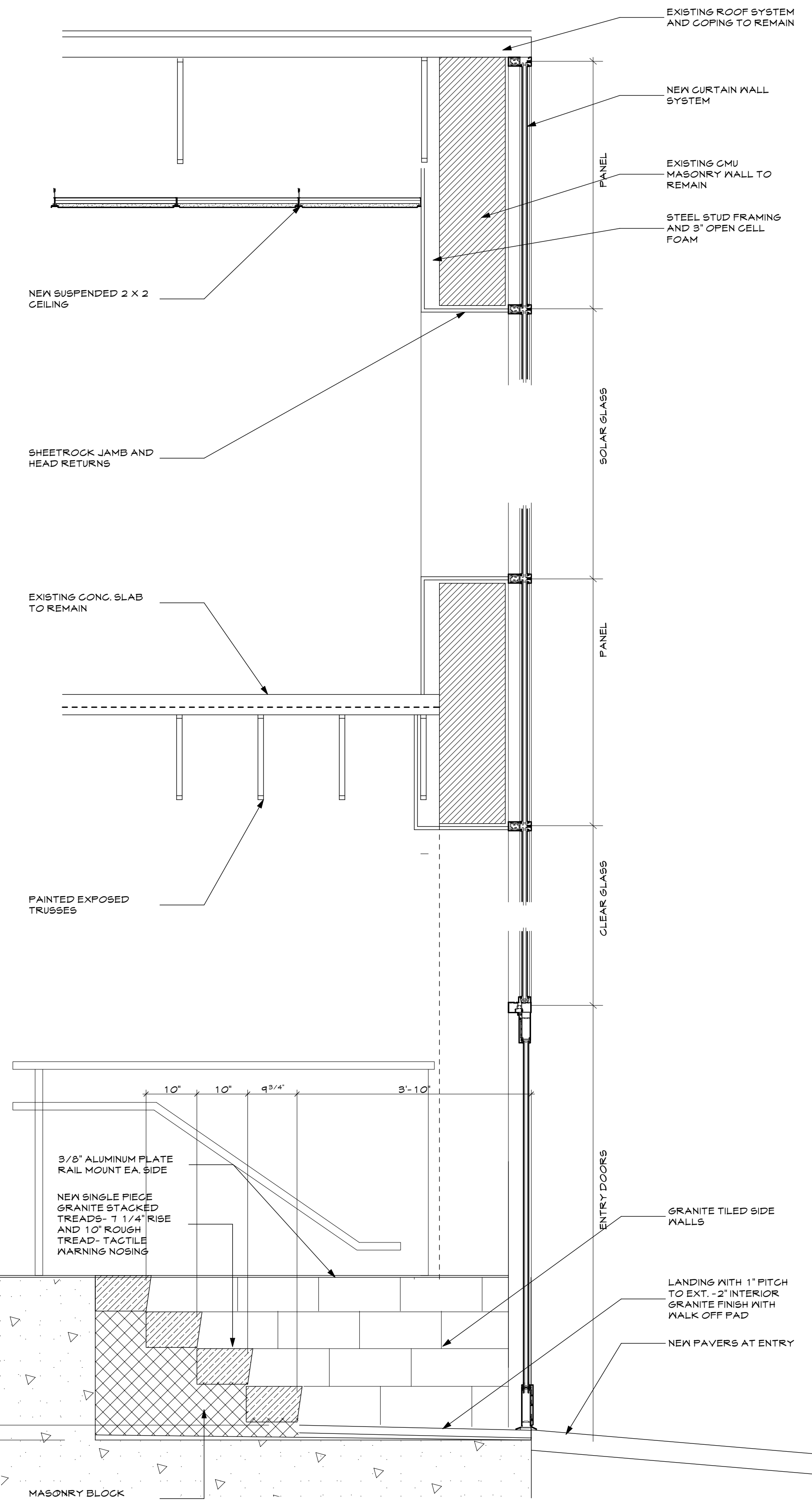
PARKING LOT ENTRY DETAILS



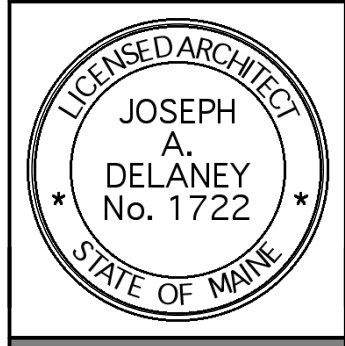
RENOVATED FOREST AVENUE STAIR PLAN



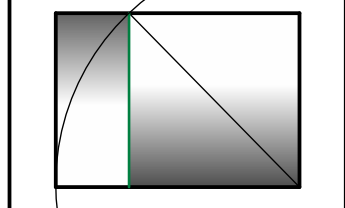
RENOVATED FOREST AVENUE STAIR



FOREST AVENUE WALL SECTION WITH ENTRY



WHIPPLE - CALLENDER ARCHITECTS



136 PLEASANT AVE.
PORTLAND, ME 04103
P 207.115.2646
F 207.115.5631
www.whipplecallender.com

MARK	DATE	DESCRIPTION

DATE:	8.29.12
CHECKED BY:	JAD
DRAWN BY:	JAD
JOB:	FAO-12
SHEET TITLE:	WALL SECTIONS

WALL SECTIONS