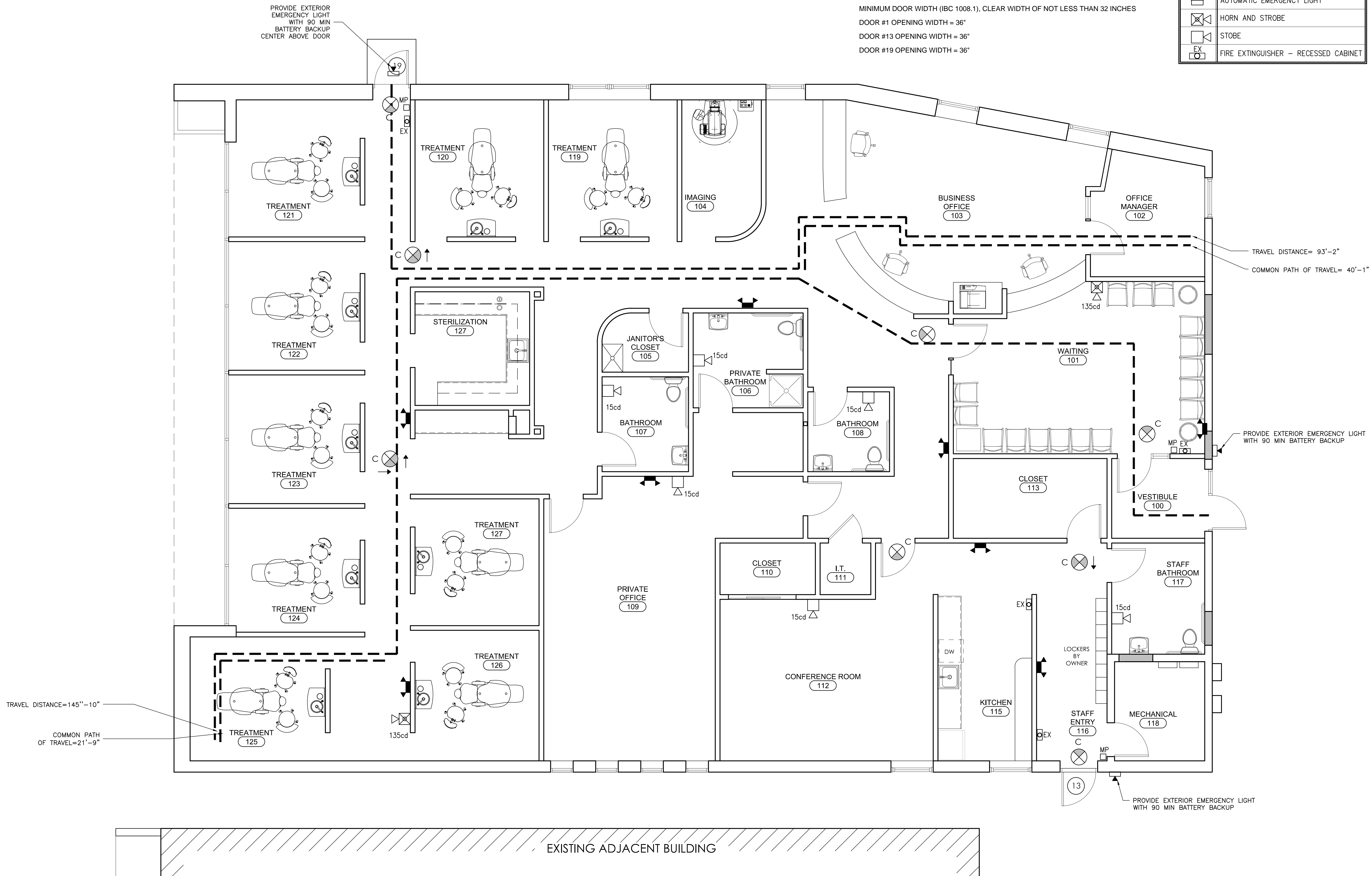


1. OCCUPANCY LOAD - MEANS OF EGRESS IBC CHAPTER 10
 DESIGN TOTAL FOR BUSINESS (B) USE CLASSIFICATION = 100 GROSS
 GROSS FLOOR AREA = 4,883 SF
 OCCUPANCY LOAD 4,883/100 = 48.83 (49)
 EGRESS WIDTH PER OCCUPANT (IBC TABLE 1005.1) 0.2 INCHES
 MINIMUM EGRESS WIDTH REQUIRE PER 1005, 49 OCC x .2 IN. = 9.8 INCHES
 MINIMUM DOOR WIDTH (IBC 1008.1), CLEAR WIDTH OF NOT LESS THAN 32 INCHES
 DOOR #1 OPENING WIDTH = 36"
 DOOR #13 OPENING WIDTH = 36"
 DOOR #19 OPENING WIDTH = 36"

REFL. CEILING PLAN SYMBOLS LEGEND	
	DIRECTIONAL EXIT LIGHT
	AUTOMATIC EMERGENCY LIGHT
	MANUAL PULL STATION
	AUTOMATIC EMERGENCY LIGHT
	HORN AND STROBE
	STROBE
	FIRE EXTINGUISHER - RECESSED CABINET



GENERAL CONTRACTOR

STRUCTURAL ENGINEER

MEP ENGINEER

CLIENT

Endodontic Associates, P.A.
 278 Conco Road
 Portland, ME 04103

PROJECT

New Office Renovation

563 Forest Avenue
 Portland, ME 04101



ISSUED FOR PERMIT

INFORMATION

Path: M:/boulos/endodontics

Issue Date: 12/31/13

Drawn By: dijg

Checked By:

Revision:

- 02.26.14 - RELOCATED EGRESS, NEW GLAZING REQUIREMENT AT ALLEY
-
-
-

TITLE

EGRESS PLAN AND LIFE SAFETY EQUIPMENT

SCALE

1/4"=1'-0"

© 2014 Graham Architects. All rights reserved. Information, material, and designs in this document are proprietary to and owned by Endodontic Associates, and may not be disclosed to any third party, reproduced, posted on a global computer information network, or distributed in any way without the written consent from Graham Architects.

A-01