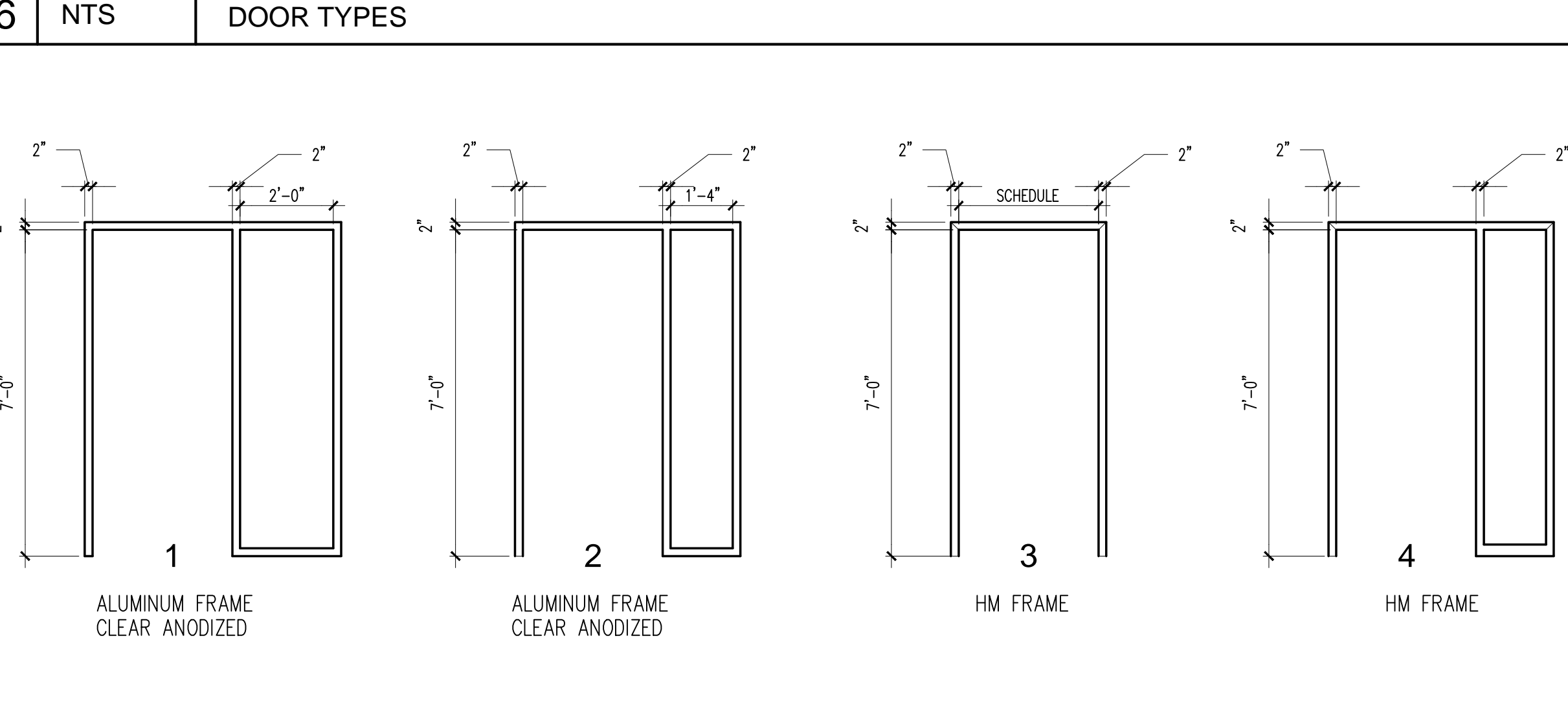
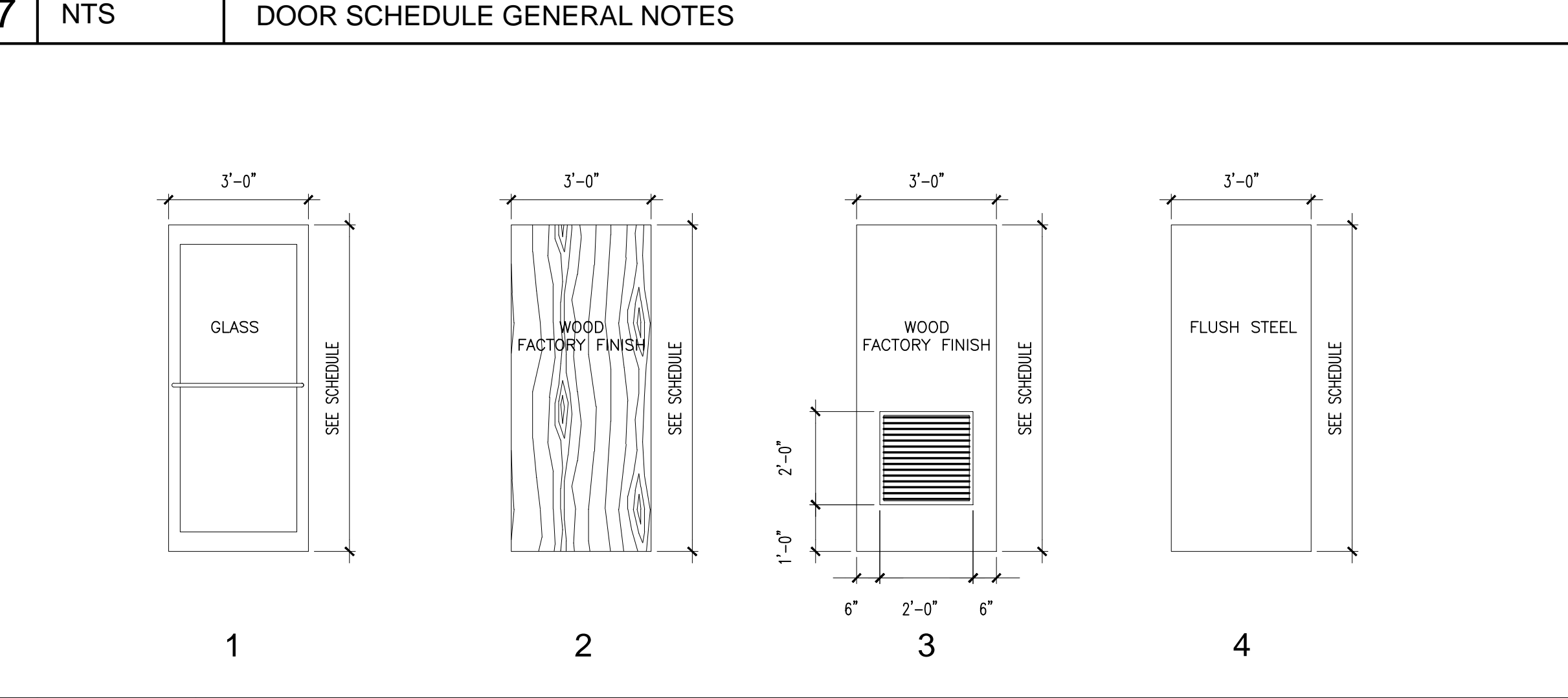
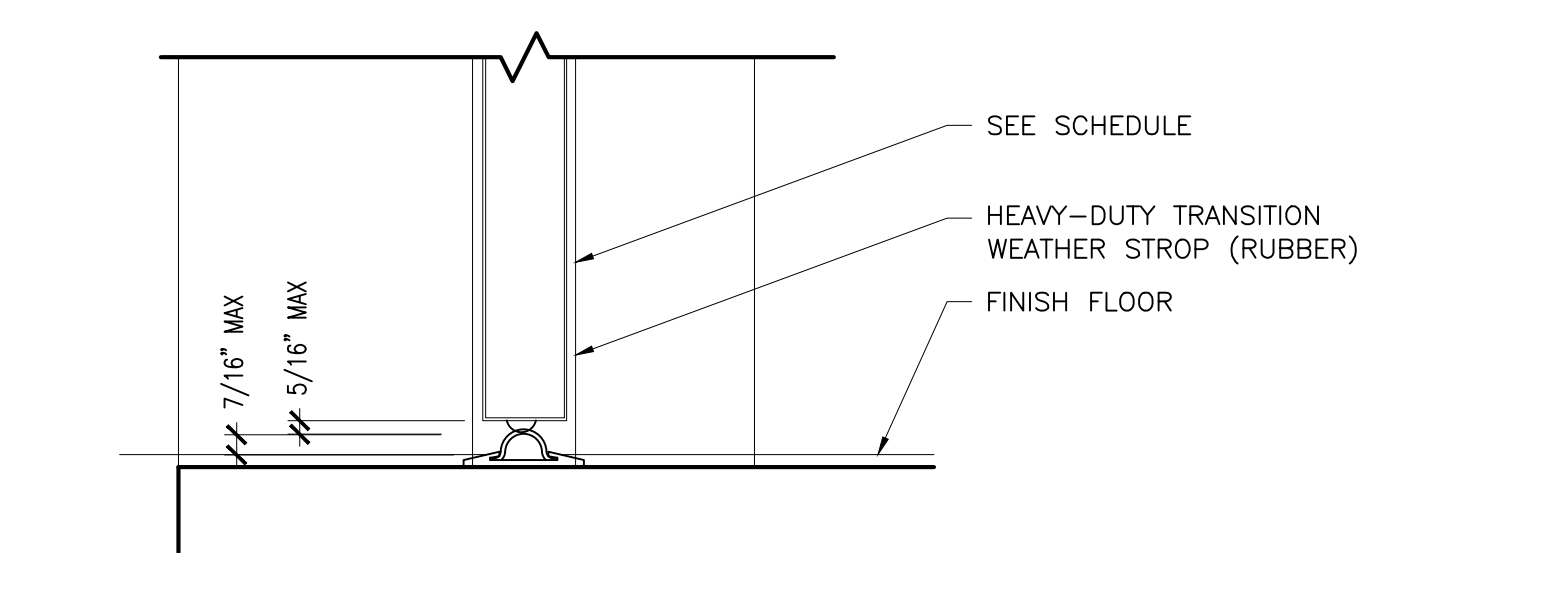


DOOR SCHEDULE											
DOOR NUMBER	DOOR				FRAME					HWS	REMARKS
	SIZE	MATERIAL	ELEVATION	GLAZING	MATERIAL	ELEVATION	HEAD	JAMB	SILL		
01	3'-0" x 7'-0" x 1-3/4"	AL	1	TEMP	AL	1	-	-	6/A7		TEMPERED GLASS SIDELIGHT
02	3'-0" x 7'-0" x 1-3/4"	AL	1	TEMP	AL	2	-	-	6/A7		TEMPERED GLASS SIDELIGHT
03	3'-0" x 7'-0" x 1-3/4"	WD/WV	2	NA	HM	4	4/A7	4/A7	NA		TEMPERED GLASS SIDELIGHT
04	3'-0" x 7'-0" x 1-3/4"	WD/WV	2	NA	HM	3	4/A7	4/A7	NA		
05	3'-0" x 7'-0" x 1-3/4"	WD/WV	2	NA	HM	4	4/A7	4/A7	NA		TEMPERED GLASS SIDELIGHT
06	3'-0" x 7'-0" x 1-3/4"	WD/WV	3	NA	HM	3	4/A7	4/A7	NA		
07	3'-0" x 7'-0" x 1-3/4"	WD/WV	2	NA	HM	3	4/A7	4/A7	NA		
08	3'-0" x 7'-0" x 1-3/4"	WD/WV	2	NA	HM	3	4/A7	4/A7	NA		
09	3'-0" x 7'-0" x 1-3/4"	WD/WV	2	NA	HM	3	4/A7	4/A7	NA		
10	3'-0" x 7'-0" x 1-3/4"	WD/WV	2	NA	HM	3	4/A7	4/A7	NA		
11	3'-0" x 7'-0" x 1-3/4"	WD/WV	2	NA	HM	3	4/A7	4/A7	NA		
12	3'-0" x 7'-0" x 1-3/4"	HM	2	NA	HM	3	4/A7	4/A7	NA		
13	3'-0" x 7'-0" x 1-3/4"	WD/WV	2	NA	HM	3	-	-	8/A7		
14	3'-0" x 7'-0" x 1-3/4"	WD/WV	2	NA	HM	3	4/A7	4/A7	NA		
15	3'-0" x 7'-0" x 1-3/4"	WD/WV	2	NA	HM	3	4/A7	4/A7	NA		
16	3'-0" x 7'-0" x 1-3/4"	WD/WV	2	NA	HM	3	4/A7	4/A7	NA		
17	3'-0" x 7'-0" x 1-3/4"	WD/WV	2	NA	HM	3	4/A7	4/A7	NA		
18	3'-0" x 7'-0" x 1-3/4"	WD/WV	2	NA	HM	3	4/A7	4/A7	NA		
19	3'-0" x 7'-0" x 1-3/4"	WD/WV	2	NA	HM	3	-	-	8/A7		

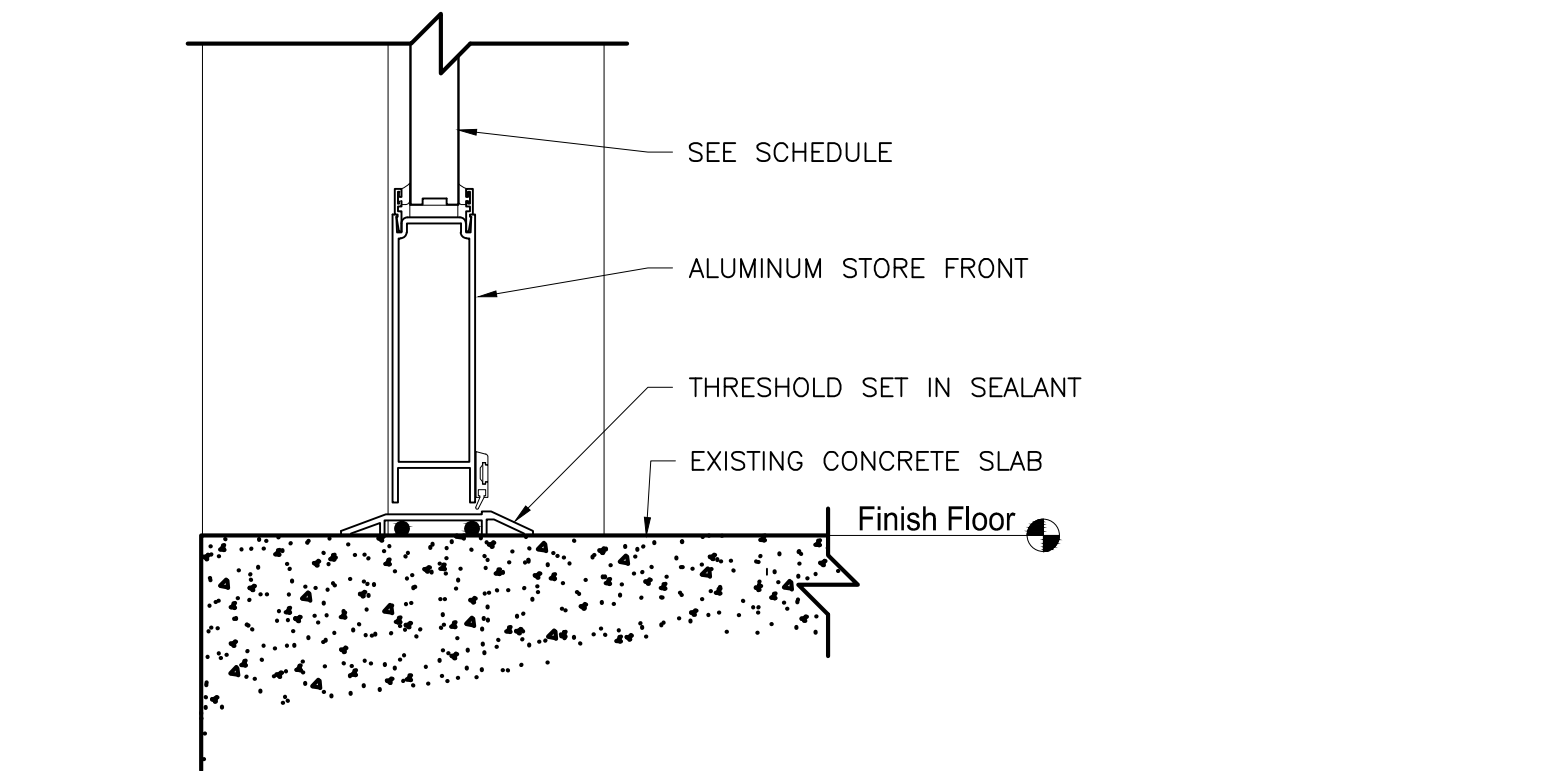
- 9 NTS DOOR SCHEDULE**
- SYMBOL $\sqrt{\quad}$ SHOWN ON SCHEDULE INDICATES A REPEAT OF A PREVIOUS REFERENCE ON THE SCHEDULE.
 - ALL DOORS ARE 1-3/4" THICK UNLESS OTHERWISE NOTED.
 - DOOR CONSTRUCTION: TYPICAL - WD - SOLID CORE WOOD HC - HOLLOW CORE HM - HOLLOW METAL AL - ALUMINUM & GLASS
 - FINISH: TYPICAL - WV - WOOD VENEER PL - PLASTIC LAMINATE MP - METAL PAINTED AP - ALUMINUM PAINTED PT - PAINTED
 - GLASS: TYPICAL - CW - CLEAR WIRE CP - CLEAR PLATE TP - TEMPERED LG - LEADED GLASS
 - FRAME: TYPICAL - FF - FLUSH FRAME AL - ALUMINUM HM - HOLLOW METAL WD - WOOD AP - ALUMINUM PAINTED
 - MAXIMUM GLASS AREA FOR 45 MIN. AND 20 MIN. DOOR SHALL NOT EXCEED 1296 SQ.IN. AND HAVE A MAX. LITE DIMENSION OF 54". MAXIMUM GLASS AREA FOR 90 MIN. DOOR SHALL BE 100 SQ.IN.
 - CONTRACTOR TO VERIFY EXISTING CONDITIONS OF ALL PROPOSED MASONRY OPENINGS PRIOR TO CUTTING MASONRY. ARCHITECT IS TO BE NOTIFIED SHOULD ANY OPENINGS REQUIRE ADJUSTMENT.
 - DOOR NO. (2) REFER TO SCHEDULE FOR HARDWARE, MODIFICATIONS, REMARKS, ETC.
 - THE FOLLOWING NOTES APPLY TO ALL HOLLOW METAL FRAMES:
 - ALL HOLLOW METAL FRAMES IN MASONRY OPENINGS SHALL BE FULLY GROUTED
 - ALL HOLLOW METAL FRAMES SHALL BE FIELD PAINTED
 - ALL DOOR JAMB ANCHORS SHALL BE VERIFIED WITH PLAN CONDITIONS AND SPECIFICATIONS
 - LABELED DOOR AND FRAMES SHALL CONFORM TO NFPA NO. 80.
 - PEENED KNOBS SHALL BE PROVIDED FOR ALL DOORS FROM CORRIDORS TO ELECTRICAL CLOSETS, MECHANICAL ROOMS, TELEPHONE CLOSETS, AND STAIR PENTHOUSES
 - ALL FRAMES ARE "WRAP AROUND" UNLESS NOTED



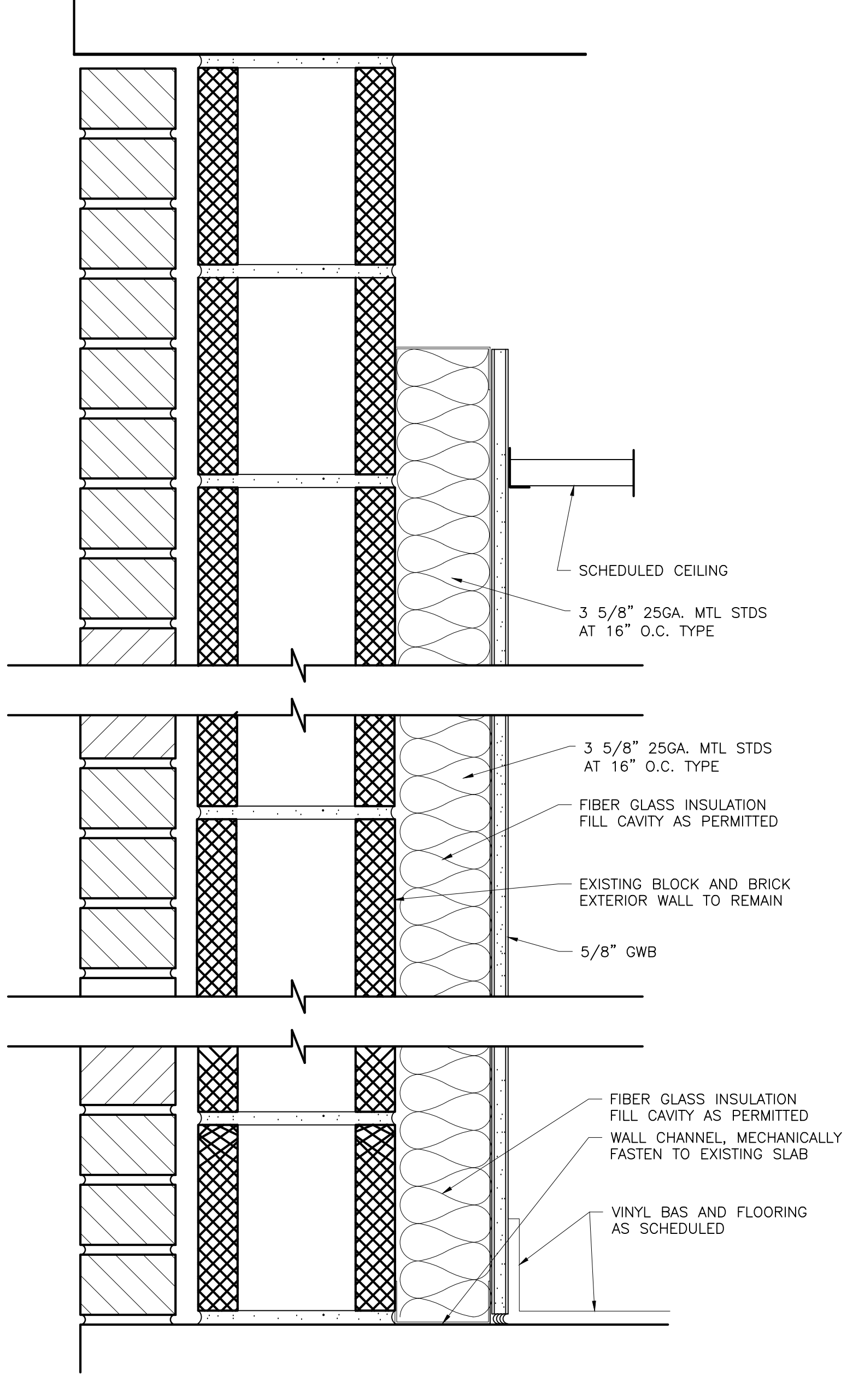
3 3/8"=1'-0" DOOR FRAME TYPES



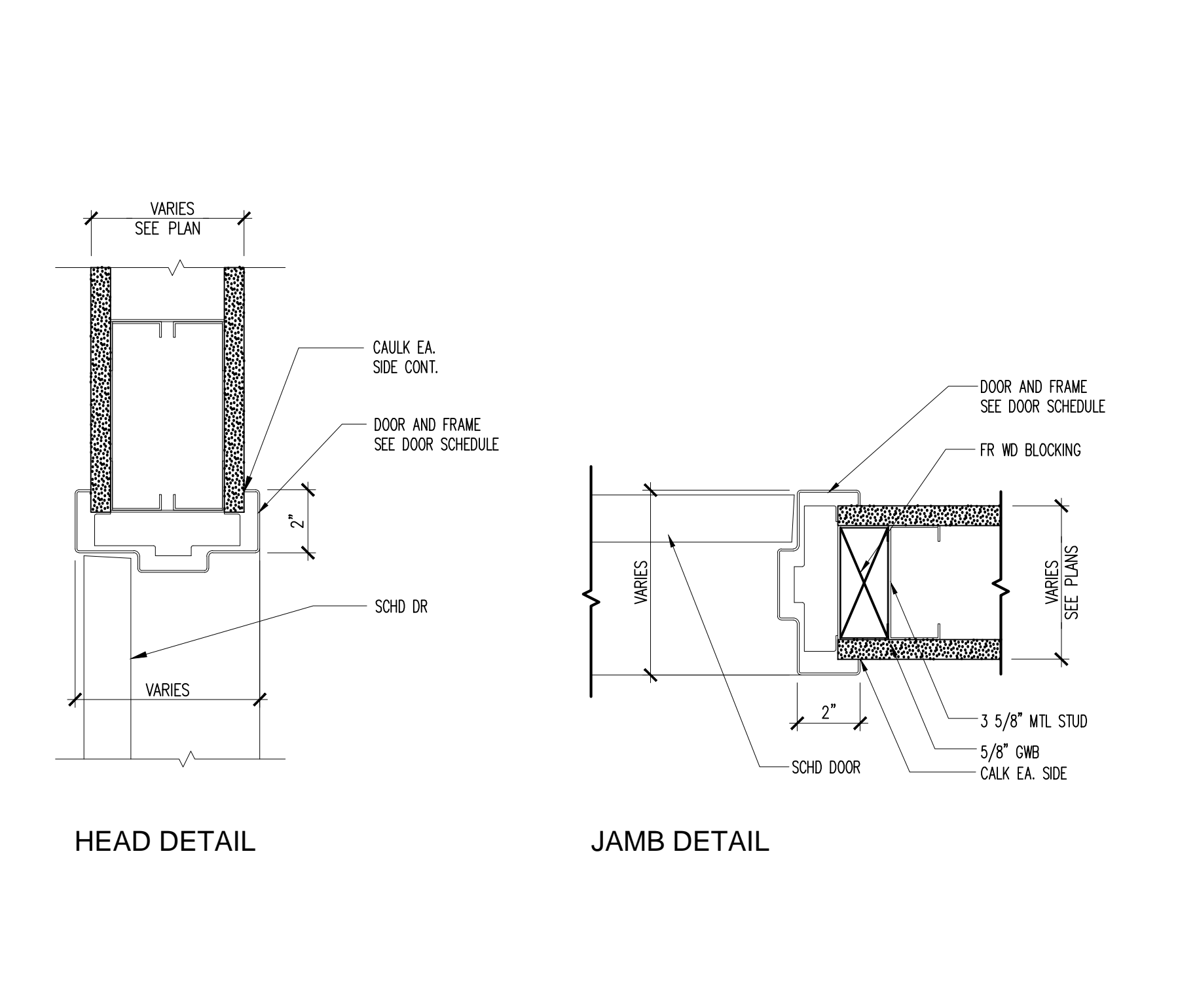
8 3" = 1'-0" EXTERIOR DOOR SILL DETAIL



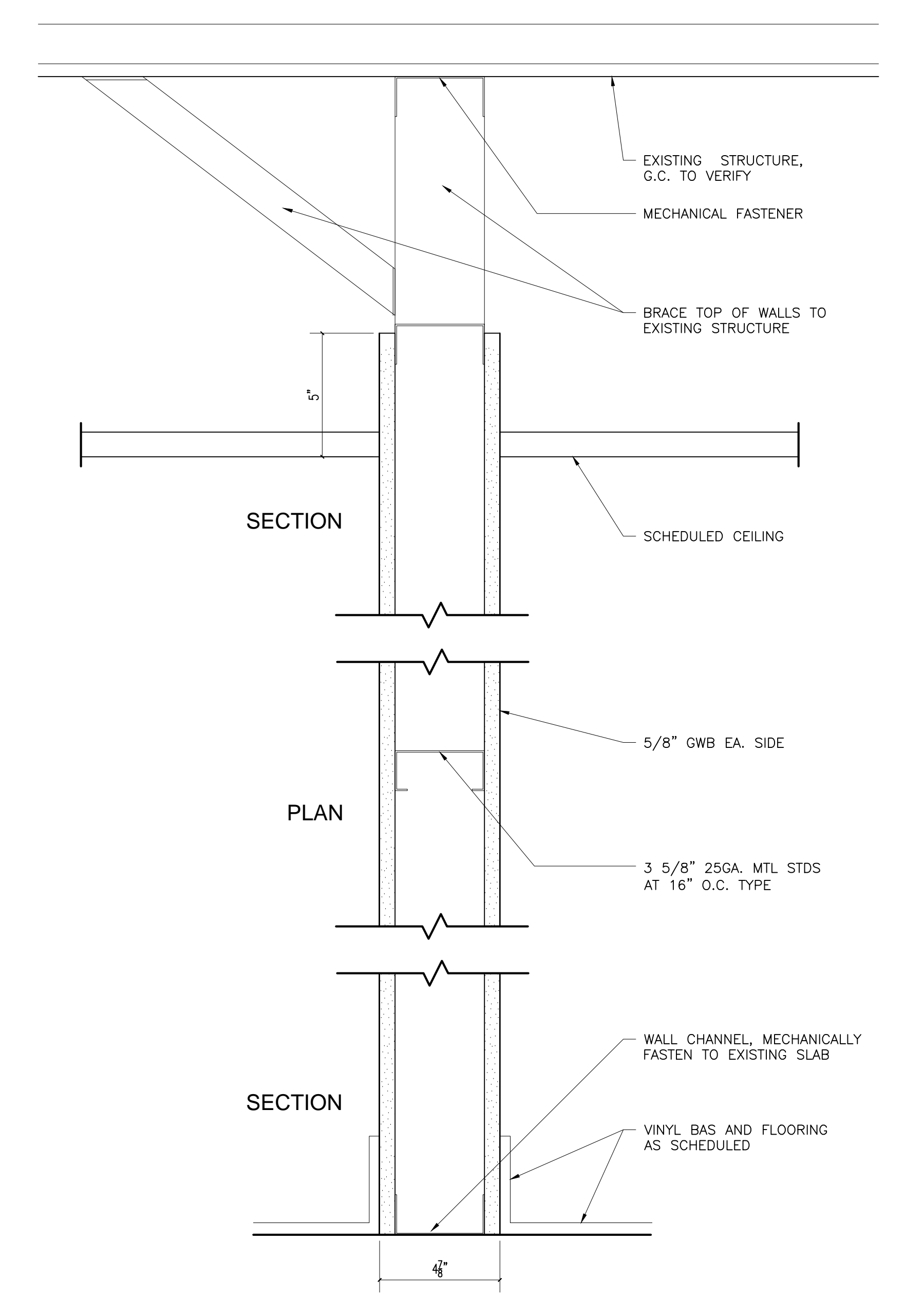
5 3" = 1'-0" ENTRY SILL DETAIL



2 3" = 1'-0" WALL TYPE 2 - TYPICAL EXTERIOR WALL CONDITION



4 3" = 1'-0" TYPICAL MTL FRAME DOOR JAMB AND HEAD DETAIL



1 3" = 1'-0" WALL TYPE 1

DO NOT SCALE DRAWINGS

GENERAL CONTRACTOR
 STRUCTURAL ENGINEER
 MEP ENGINEER
 CLIENT

Endodontic Associates, P.A.
 276 Conoco Road
 Portland, ME 04103
 PROJECT
New Office Renovation
 563 Forest Avenue
 Portland, ME 04101



ISSUED FOR PERMIT

INFORMATION
 Path: M:/boulos/endodontics
 Issue Date: 12/31/13
 Drawn By: djg
 Checked By:
 Revision:
 1.
 2.
 3.
 4.

TITLE
MILLWORK DRAWINGS AND DETAILS
 SCALE
 AS NOTED

© 2014 Graham Architects. All rights reserved. Information, material, and designs in this document are proprietary to and owned by Endodontic Associates and may not be disclosed to any third party, reproduced, posted on a global computer information network, or distributed in any way without the written consent from Graham Architects.