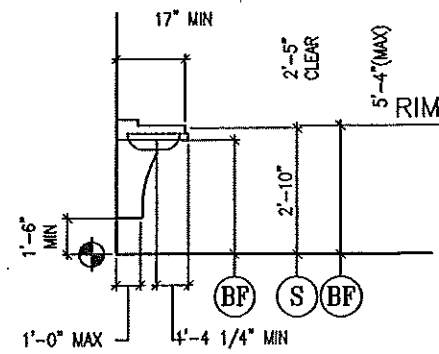
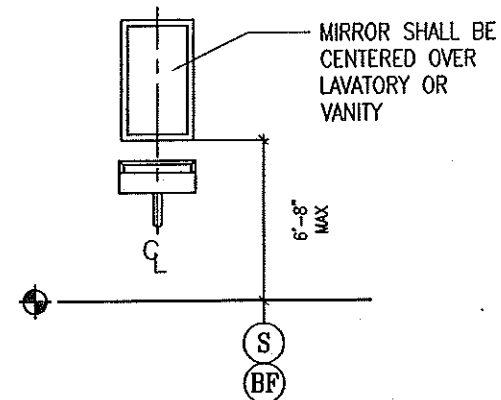


1 WATER CLOSET & GRAB BAR



2 WALL-HUNG LAVATORY 3 MIRROR OR MED. CABINET



NOTES:

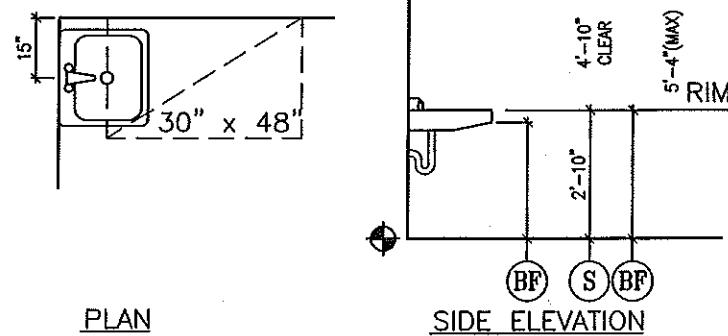
1. ALL EMERGENCY LIGHTS MUST BE POWERED BY BATTERY BACK-UP OR GENERATOR PER NFPA 101.
2. HVAC PER NFPA 90A
3. EMERGENCY LIGHTS TO AVERAGE 1 FOOTCANDLE AND .1 FOOTCANDLE MINIMUM.

ABBREVIATIONS:

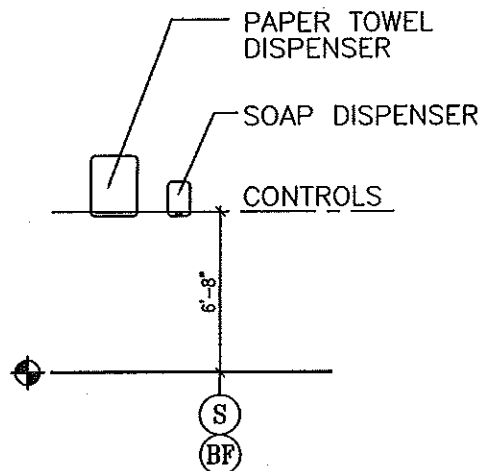
ABBR:	DESCRIPTION:
ADA LL	ADA LOCKING LEVER
CB	CRASH BAR
CL	DOOR CLOSER
CO	CASED OPENING
DB	DEADBOLT
DB/TT	DEADBOLT w/ THUMBTURN
DS	DOOR STOP
WS	WEATHER STRIPPING SYSTEM
FS	FLOOR STOP
IKP	INTERIOR KICK PLATE
IPP	INTERIOR PUSH PLATE
L	ADA LEVER DOOR HANDLE
LOOP	ADA LOOP PULL
PEEP	PEEP HOLE
PRIV.	PRIVACY HARDWARE
n	= NEW (PREFIX)
r	= RELOCATED (PREFIX)
x	= EXISTING (PREFIX)

NOTE

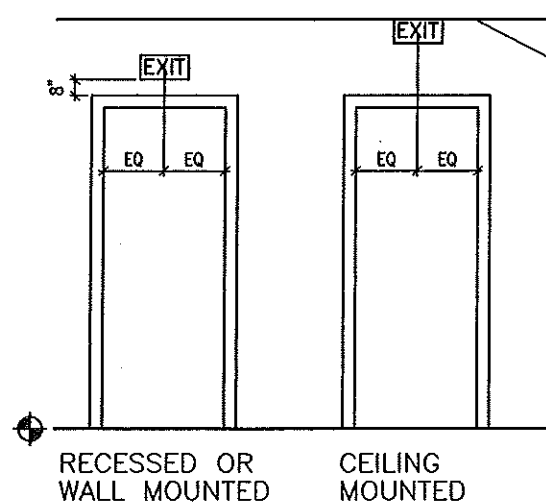
1. MOUNT ALL FIXTURES AT STANDARD MOUNTING HEIGHT UNLESS INDICATED ON PLAN BY A & SYMBOL. A & SYMBOL AT ANY ROOM SHALL INCLUDE ONE OF ANY FIXTURE AND ACCESSORY WITHIN THE ROOM.
2. ALL SINKS TO HAVE ADA LEVER HANDLES.
3. WRAP ALL EXPOSED PIPES BELOW SINKS.



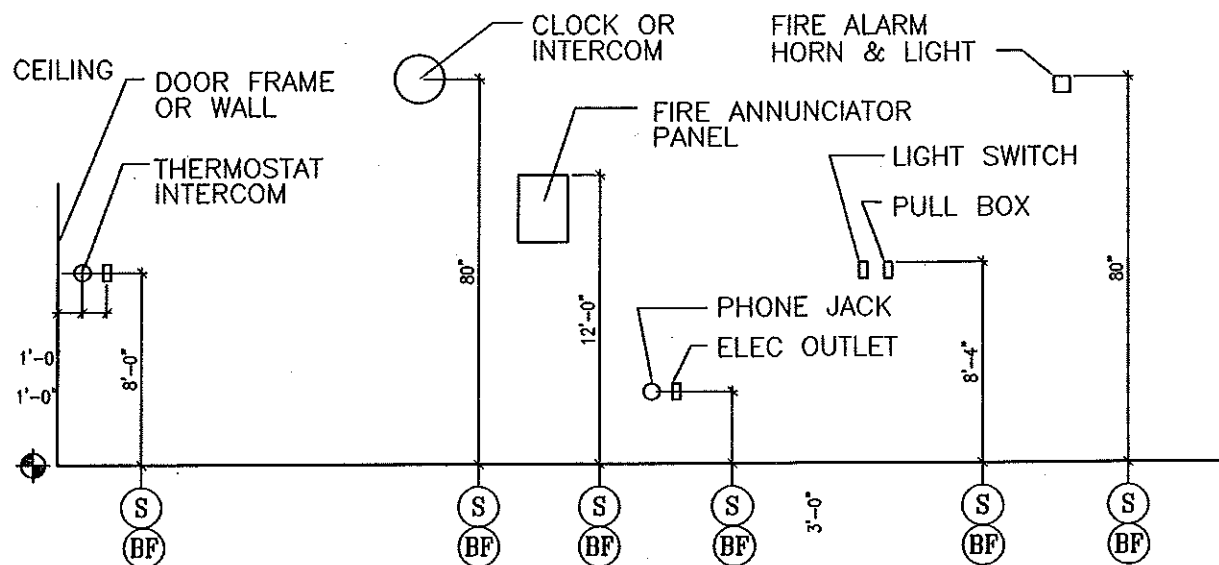
2 WALL-HUNG LAVATORY OR HAND SINK



3 TOWEL & SOAP DISPENSERS



4 EXIT SIGNS
TYPICAL UNLESS OTHERWISE NOTED



5 ELECTRICAL & FIRE PROTECTION DEVICES
TYPICAL UNLESS NOTED OTHERWISE

FIRE PROTECTION LEGEND

⊕ FE	FIRE EXTINGUISHER 10# ABC
FE-K⊕	FIRE EXTINGUISHER 10# K
⊙	EXIT LIGHT
⊕ S	STROBE ONLY WITH CANDELLA RATING AS NOTED
⊕ H	HORN STROBE WITH CANDELLA RATING AS NOTED
⊕ V	VOICE EVACUATION SYSTEM PER NFPA 72
⊕	DUAL EMERGENCY LIGHT
⊕	SINGLE EMERGENCY LIGHT
⊕	SMOKE DETECTOR (CEILING)
⊕	HEAT DETECTOR (CEILING)
⊕ C	CARBON MONOXIDE DETECTOR
⊕	COMBINATION LIGHT/EXHAUST FAN
⊕	FIRE ALARM MASTER CONTROL PANEL
⊕ PS	PULL STATION
⊕	EXTERIOR EGRESS LIGHT
⊕ N.A.E.	'NOT AN EXIT' SIGN W RAISED BRAILLE
⊕ V.A.P.	VAN ACCESSIBLE

LEGEND

⊕ S	STANDARD MOUNTING HEIGHT
⊕ BF	BARRIER FREE ADULT MOUNTING HEIGHT
⊕	FINISH FLOOR LINE

TYP. BARRIER FREE REQUIREMENTS

ALPHAarchitects
17 CHESTNUT STREET
PORTLAND, ME 04101
PHONE: 207.761.9500
FAX: 207.761.9595
design@alphaarchitects.com

COPYRIGHT
Reuse or reproduction of the contents of this document is not permitted without written permission of ALPHA ARCHITECTS.



Coastal Trading & Pawn
543 Forest Avenue
Portland, Maine 04103

JOB: 13108

ISSUE DATE	
PRELIM.	02-14-13
PBoard	NR
C.D's	3-15-13
REV. 1	-
REV. 2	-
PRINT	03-15-13

T2

03-15-13