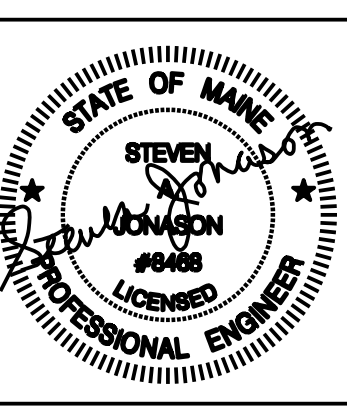
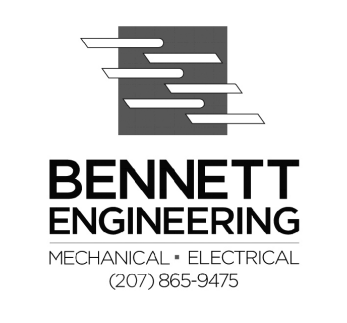


Richard Curtis & Associates

PO Box 9730-1150  
Portland, ME 04104-5030  
Phone: (207)797-6300  
Fax: (207)797-6303  
rcurtisassociates@me.rr.com



Owner:  
SSA REALTY LLC

One City Center  
Portland, ME 04103

Contractor:  
DMC PAINTING & REMOLDING  
59 Sanford St  
Portland, ME 04103  
207-856-1838

Project:  
RENOVATIONS TO SSA OFFICES  
550 Forest Avenue  
Portland, ME 04103

Project No: 10403

Drawing Title:  
1<sup>st</sup> FLOOR PART PLAN-LIGHTING  
Scale: 1/8"=1'-0"  
Date: 09 Dec 2016  
Revision Dates:  
10/21/16-75% Progress  
12/09/16-Final Review  
1/04/17-For Permit

Drawing Number:

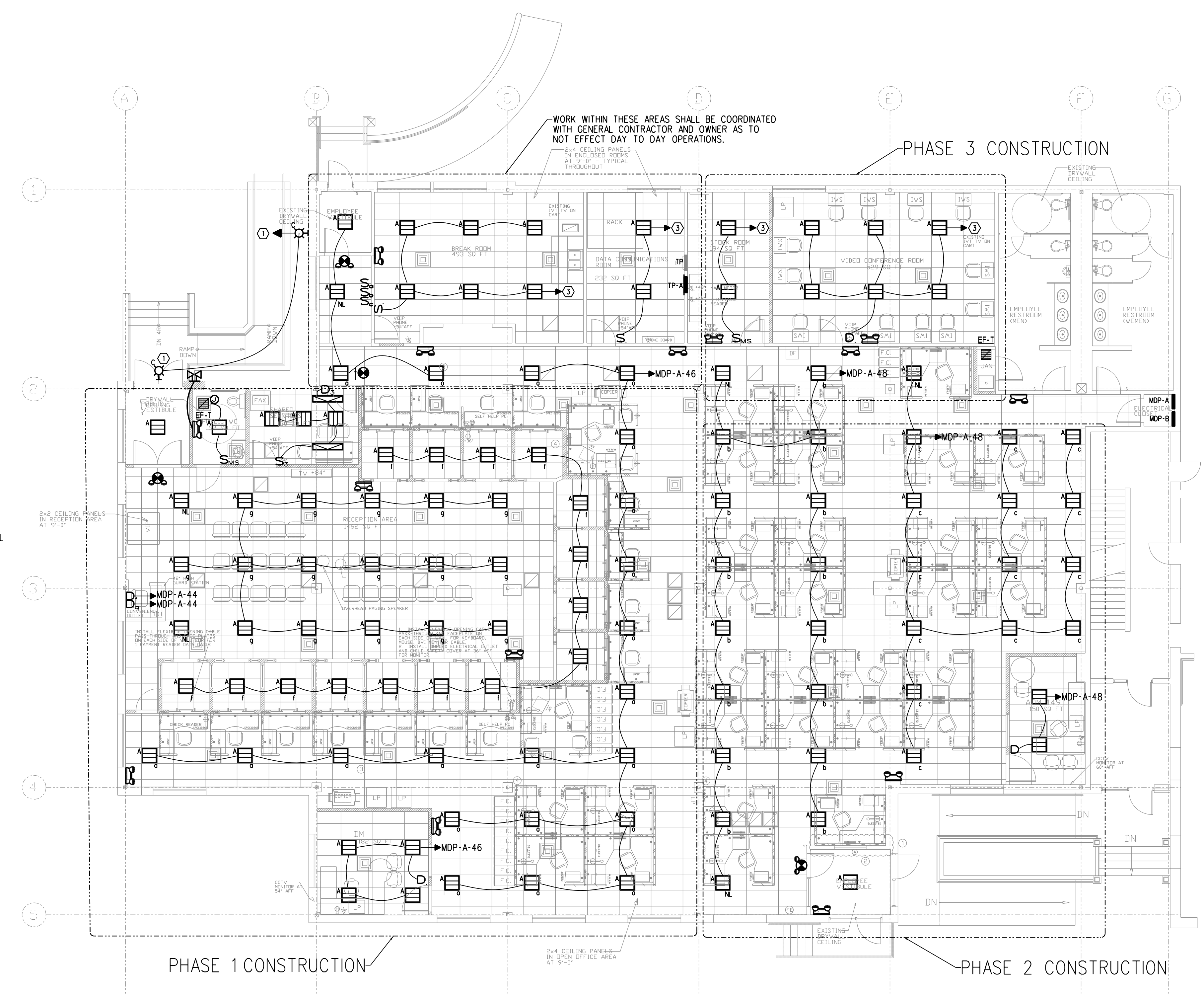
BE-2

**LIGHTING NOTES:**

1. LIGHT FIXTURE SHALL BE OR EQUAL:  
TYPE A-FINELITE HPR-LED-ANR-2x2-DCO-H-8-35-120V-SC-C2 44.7W LED, 3500K, DIMMING  
TYPE B-  
TYPE C- MATCH EXISTING EXTERIOR LIGHTS CURRENTLY INSTALLED ON BUILDING.
2. CONTRACTOR SHALL WIRE EF-T FOR CONTINUOUS OPERATION WITH RAMP UP TO HIGH SPEED WHEN TRIGGERED BY BUILT IN MOTION SENSOR SUPPLIED WITH FAN. CONTRACTOR SHALL WIRE FAN ACCORDING TO MANUFACTURERS RECOMMENDATIONS.
3. CONTRACTOR SHALL UTILIZE EXISTING LIGHTING CIRCUITS TO POWER NEW LIGHTING LAYOUT. EXISTING LIGHTING CIRCUITS ARE SHOWN ON SMITH GROUP DRAWING E5.
4. COORDINATE PHASING OF LIGHTING WITH ALL TRADES TO ENSURE EXISTING LIGHTING WILL REMAIN IN PLACE DURING EACH PHASE OF CONSTRUCTION.

**LIGHTING KEY NOTES:**

- ① EXTERIOR LIGHTING SHALL BE CONNECTED TO EXISTING EXTERIOR BUILDING LIGHTING CIRCUIT(S)
- ② CONNECT NEW LIGHT FIXTURES TO EXISTING LIGHTING CIRCUIT FOR SPECIFIED AREA.



PHASE 1 CONSTRUCTION

PHASE 3 CONSTRUCTION

PHASE 2 CONSTRUCTION

