

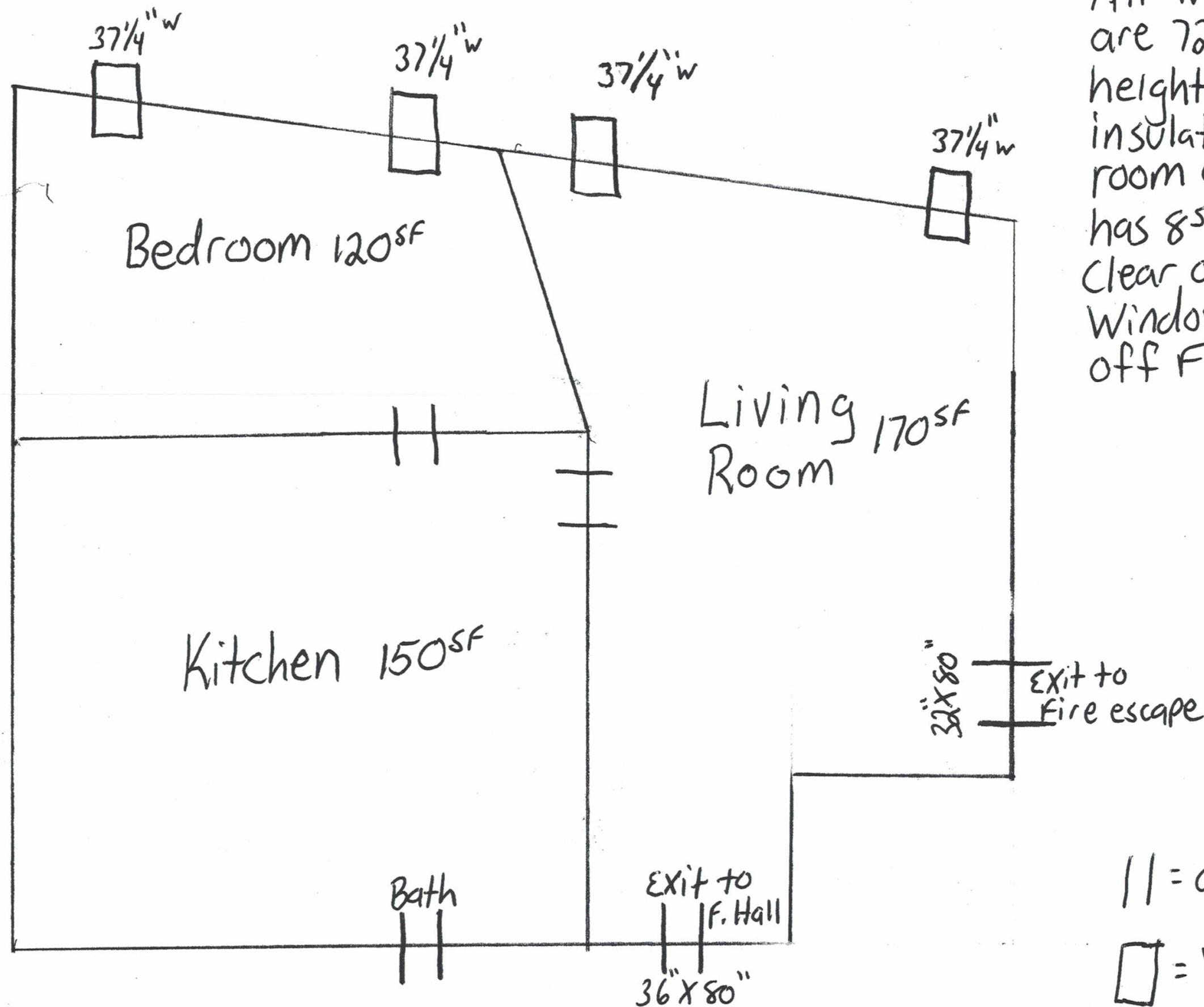
648 Forest Ave
2nd Floor

APT. B - All Windows to be replaced



Reviewed for Code Compliance
Permitting and Inspections Department
Approved with Conditions

01/09/2019



All Windows are 72 1/4" in height, double hung insulated. Each room except Kit. has 8^{SF} or more of clear opening. All Windows are 24" off Floor



Reviewed for Code Compliance
Permitting and Inspections Department
Approved with Conditions

01/09/2019

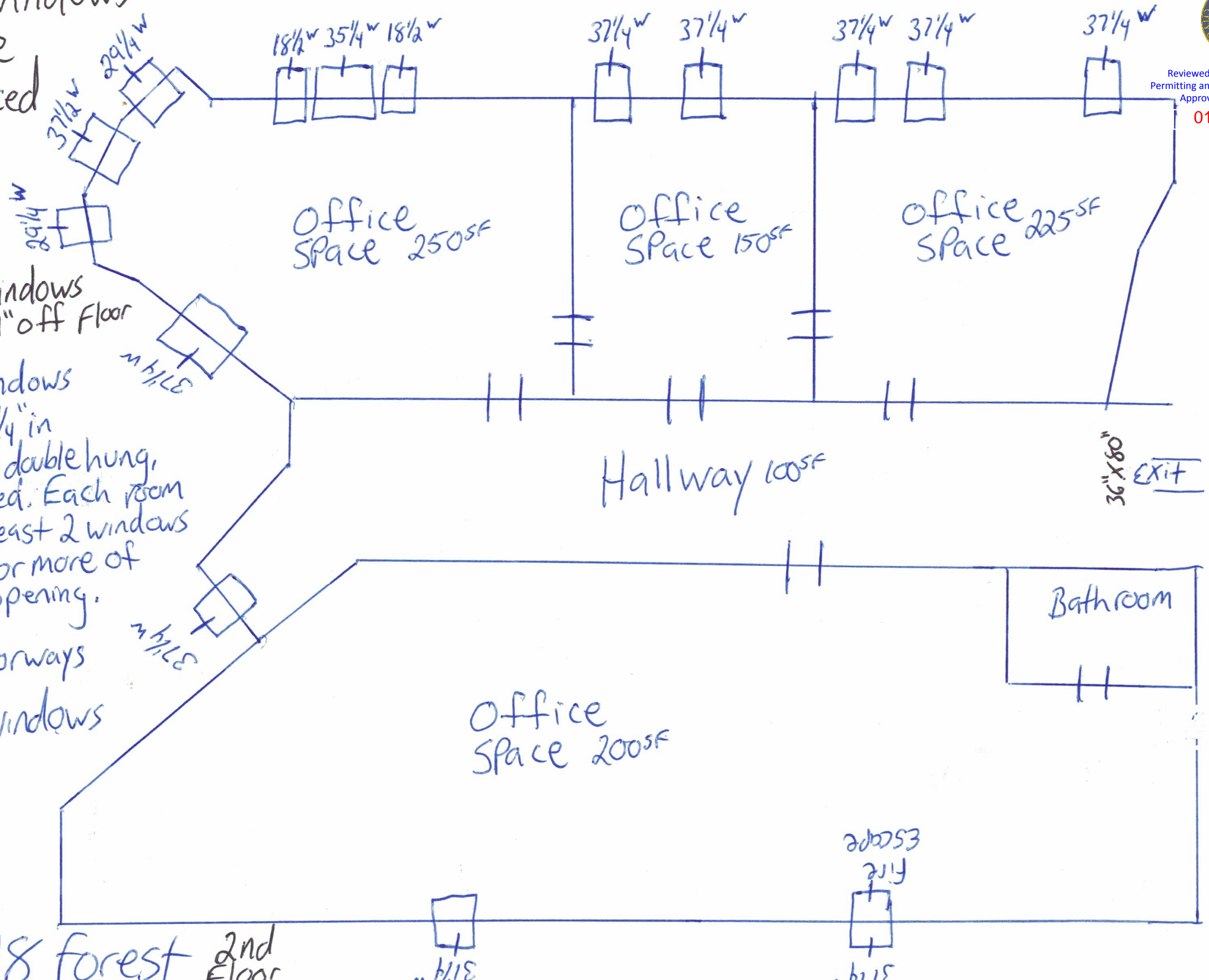
All windows
to be
replaced

All windows
are 24" off floor

All windows
are 72 1/4" in
height, double hung,
insulated. Each room
has at least 2 windows
of 8sf or more of
clear opening.

|| = doorways
[] = windows

648 forest 2nd Floor



648 Forest Ave. Apt. A 2nd Floor - All windows to be replaced



Reviewed for Code Compliance
Permitting and Inspections Department
Approved with Conditions

01/09/2019

