

Enclose m/walls
and Fire Door
to Basement

(A) 2 2x4 WALLS SEPARATING UNITS OFF SET STUDS, 4" DEAD SPACE BETWEEN WALLS, WALLS INSULATED W/ R-13 SOUND INSULATION RESILIENT CHANNEL APPLIED TOWARD EACH LIVING SPACE AND (2) LAYERS OF 5/8" FIRE CODE SHEETROCK

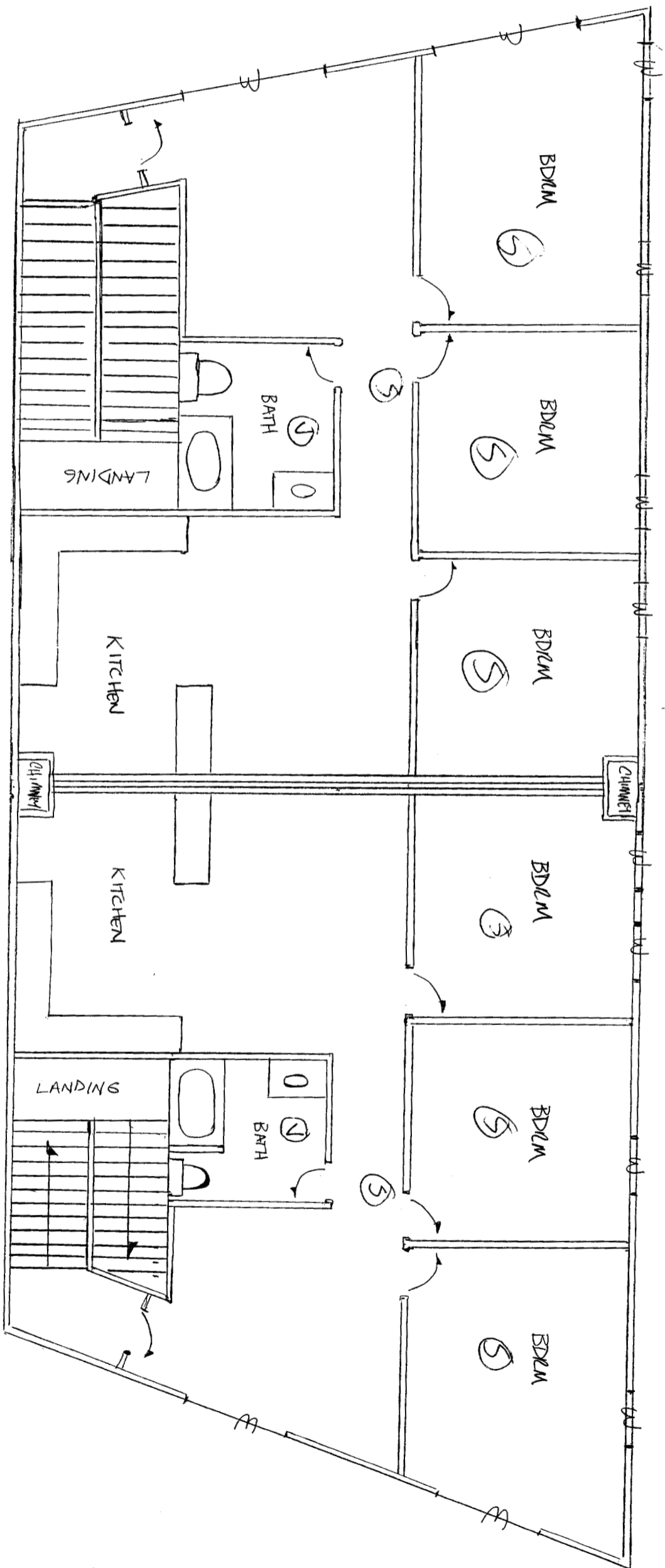
(B) BETWEEN FLOORS OF RESIDENTIAL UNITS AND COMMERCIAL SPACE INSULATED R-19 AND COVERED W/ (2) LAYERS OF 5/8" FIRE CODE SHEETROCK PER CPT. CASS

(C) STAIRWAYS EXCLUSIVE TO UNITS AS MEANS OF EGRESS COMPLETELY ENCASED W/ (2) LAYERS OF 5/8" FIRE CODE SHEETROCK W/ OWN DOOR OPENING TO EXIT PER CPT. CASS

(D) STAIRS TO BASEMENT W/ SEPARATE EXIT

(E) WINDOWS IN EACH BEDROOM TO MEET EGRESS AND/OR 30416 SIZES 3' 2 1/4" X 4' 9 1/4"

SCALE 1/4" = 1'-0"
 DEPT. OF BUILDING INSPECTION
 CITY OF PORTLAND, ME
 JAN - 9
 RECEIVED



2nd FL

SCALE 1/4" = 1' 0"