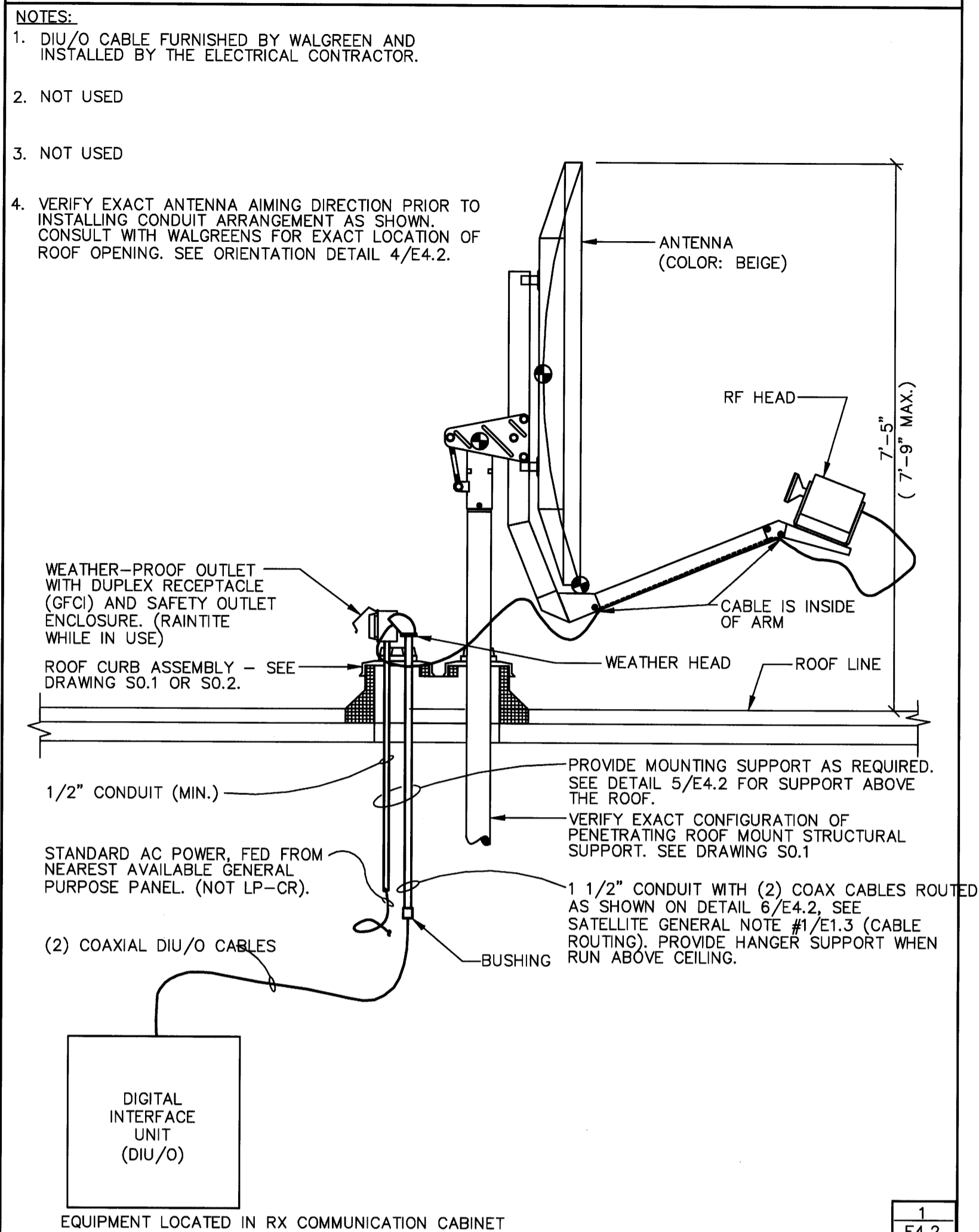


ROOF EQUIPMENT POWER CONNECTION/INTERCONNECTING CABLE DETAIL (PENETRATING ROOF MOUNT)



EQUIPMENT LOCATED IN RX COMMUNICATION CABINET
1
E4.2

SATELLITE ANTENNA WORK RESPONSIBILITIES
NEW STORE - TURNKEY PROJECT WITH ANTENNA INSTALLATION

NOTES:

- STRUCTURAL MOUNT BY LANDLORD'S CONTRACTOR
- ELECTRICAL (ROUGH-IN) CLEAN POWER BY LANDLORD'S CONTRACTOR.
- ELECTRICAL (ROUGH-IN) POWER BY LANDLORD'S CONTRACTOR.
- ELECTRICAL (ROUGH-IN) PROVISIONS (INCLUDING COAXIAL DIU/O CABLES) BY LANDLORD'S CONTRACTOR.
- INSTALLATION AND FINAL CONNECTIONS OF ANTENNA PROPER BY WALGREENS DATA TERMINAL REPAIR (DTR).

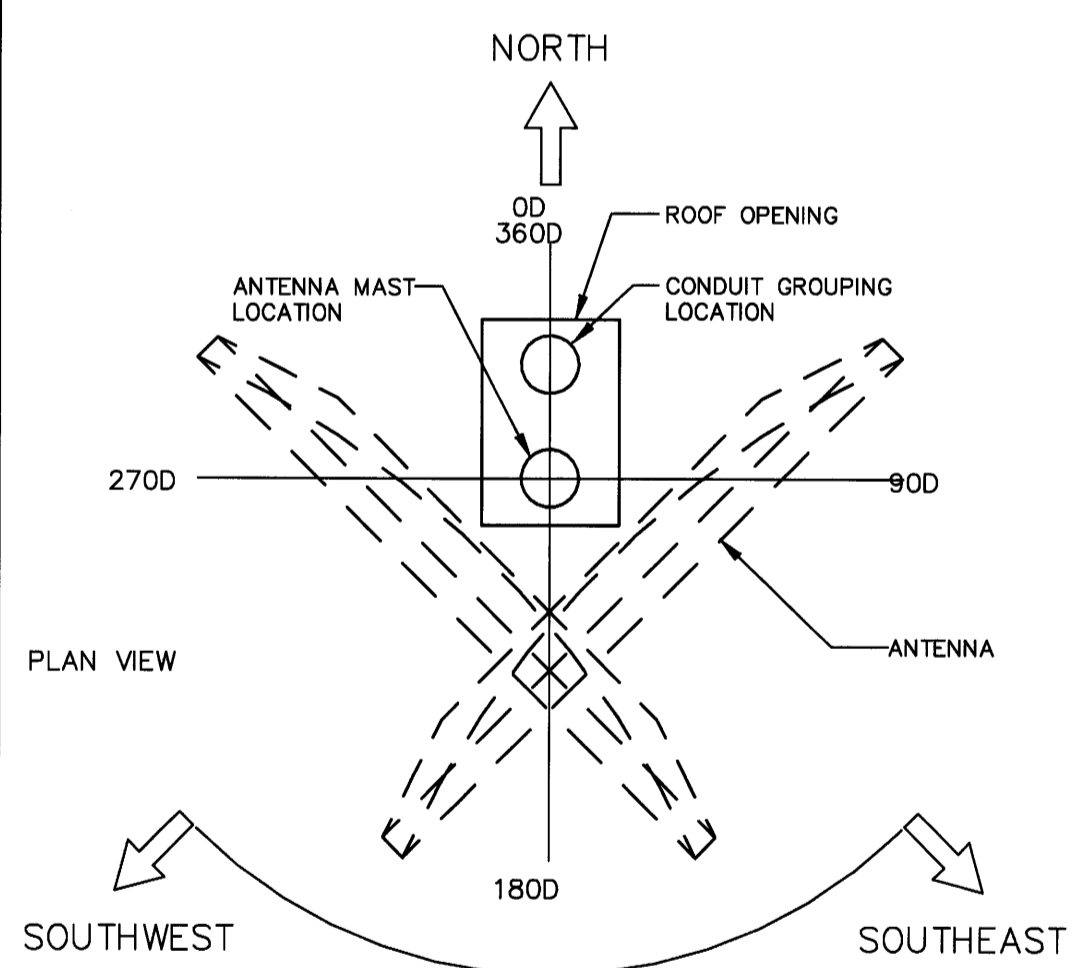
MOESER & ASSOCIATES ARCHITECT
206 AYER ROAD HARVARD, MA 978-456-6905

DRAWINGS/SPECIFICATIONS BY:
 WALGREENS
 LANDLORD'S CONSULTANT

ALL CONSTRUCTION WORK, UNLESS NOTED OTHERWISE, BY:
 WALGREENS' CONTRACTOR
 LANDLORD'S CONTRACTOR (TURNKEY CONSTRUCTION)

STORE	BUILDING
NEW <input checked="" type="checkbox"/>	NEW <input checked="" type="checkbox"/>
REMODELING <input type="checkbox"/>	EXISTING <input type="checkbox"/>
RELOCATION <input type="checkbox"/>	NEW SHELL ONLY <input type="checkbox"/>
OTHERS <input type="checkbox"/>	

ANTENNA EQUIPMENT ORIENTATION DETAIL



UNOBSTRUCTED POINTING DIRECTION. EXACT AIMING ANGLE TO BE DETERMINED PER LOCATION.

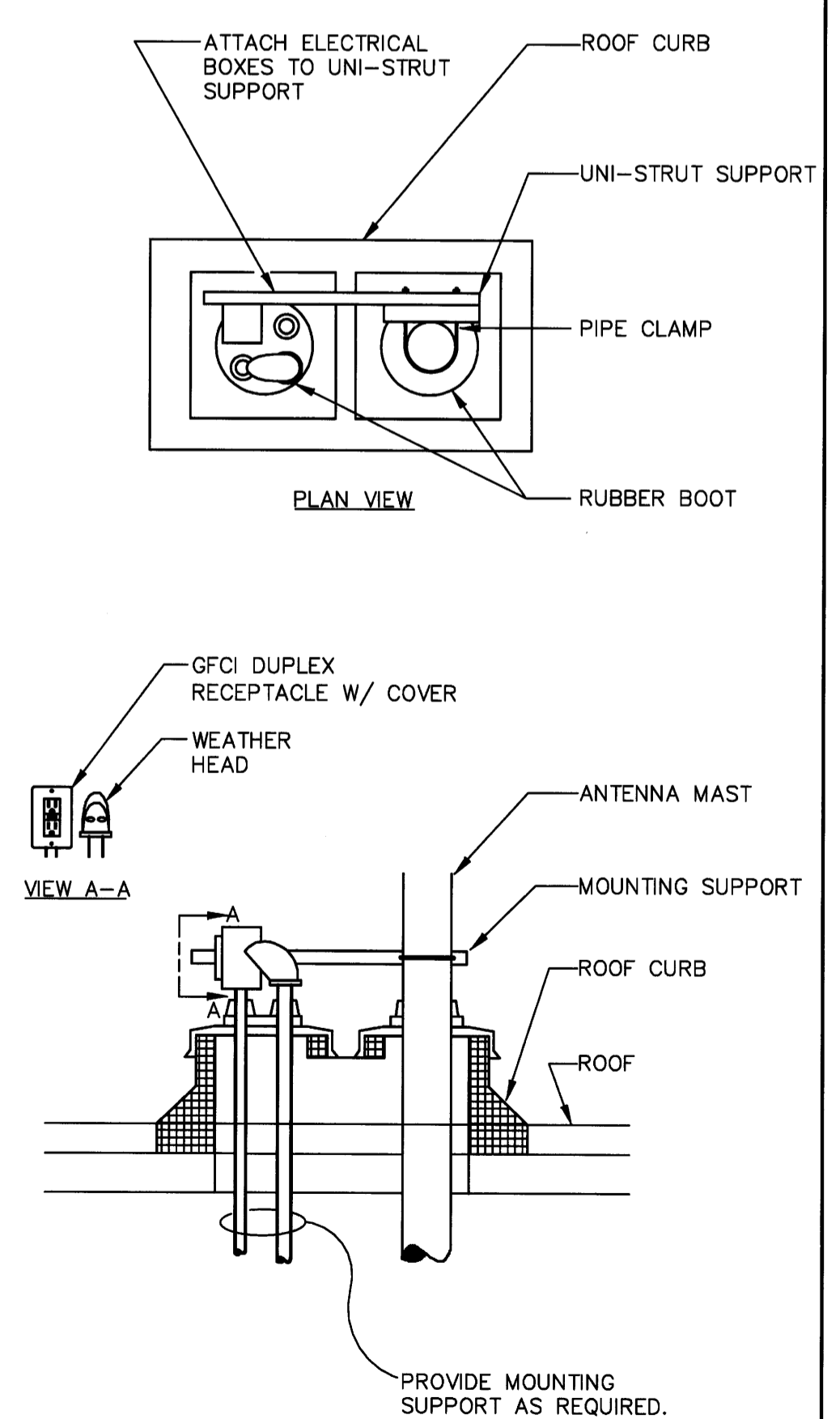
NOTE:
CONDUIT GROUP OPENING MUST ALWAYS BE ORIENTED TO THE NORTH OF THE ANTENNA PIPE SUPPORT TO AVOID CONFLICT WITH THE ANTENNA. THE ANTENNA MUST HAVE AN UNOBSTRUCTED POINTING DIRECTION FROM SOUTHEAST TO SOUTHWEST.

SELECT AREA AND THEIR CORRESPONDING APPROXIMATE ORIENTATION ANGLE (VERIFY EXACT AIMING ANGLE FOR EACH LOCATION).

	AZIMUTH (ANGLE AS SHOWN ABOVE)	ELEVATION
CHICAGO	187	42
DENVER	161	43
HOUSTON	174	56
MIAMI	207	58
MINNEAPOLIS	180	38
NY/CONNECTICUT	208	40
PHOENIX	146	46
SAN FRANCISCO	136	37
ST. LOUIS	183	46

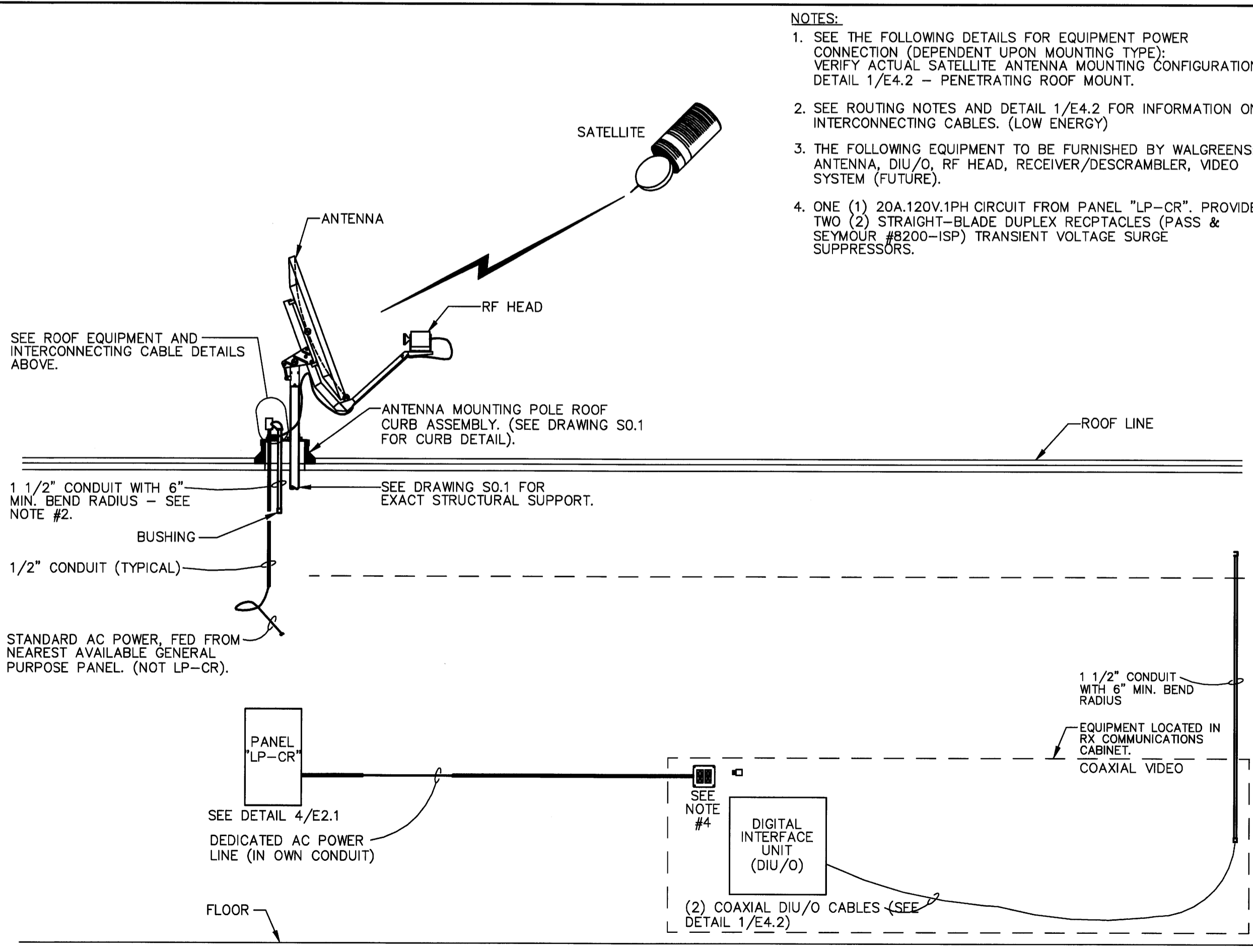
4
E4.2

CONDUIT GROUPING MOUNTING SUPPORT DETAIL



5
E4.2

SATELLITE ANTENNA SYSTEM



6
E4.2

- NOTES:**
- SEE THE FOLLOWING DETAILS FOR EQUIPMENT POWER CONNECTION (DEPENDENT UPON MOUNTING TYPE). VERIFY ACTUAL SATELLITE ANTENNA MOUNTING CONFIGURATION. DETAIL 1/E4.2 - PENETRATING ROOF MOUNT.
 - SEE ROUTING NOTES AND DETAIL 1/E4.2 FOR INFORMATION ON INTERCONNECTING CABLES. (LOW ENERGY)
 - THE FOLLOWING EQUIPMENT TO BE FURNISHED BY WALGREENS: ANTENNA, DIU/O, RF HEAD, RECEIVER/DESCRAMBLER, VIDEO SYSTEM (FUTURE).
 - ONE (1) 20A, 120V, 1PH CIRCUIT FROM PANEL "LP-CR". PROVIDE TWO (2) STRAIGHT-BLADE DUPLEX RECEPTACLES (PASS & SEYMOUR #8200-ISP) TRANSIENT VOLTAGE SURGE SUPPRESSORS.

NO.	DATE	BY	DESCRIPTION	CONST
REVISIONS				

CERTIFICATION AND SEAL

I HEREBY CERTIFY THAT THIS PLAN AND SPECIFICATION WAS PREPARED BY ME OR UNDER MY DIRECT SUPERVISION AND THAT I AM A DULY REGISTERED ARCHITECT OR ENGINEER UNDER THE LAWS OF THE STATE OF MAINE AS SIGNIFIED BY MY HAND AND SEAL.

FISCAL 2007 CRITERIA - STORE #12325

WALGREENS
616 FOREST AVENUE
PORTLAND, MAINE

DRAWING TITLE
SATELLITE SYSTEM DETAILS

CADD PLOT:	SCALE: AS NOTED	DRAWING NO.
VOID PLOT:	DRAWN BY: RJV	E4.2
RELEASED TO CONSTRUCTION	DATE: 12-10-08	
	REVIEWED BY: SAM	