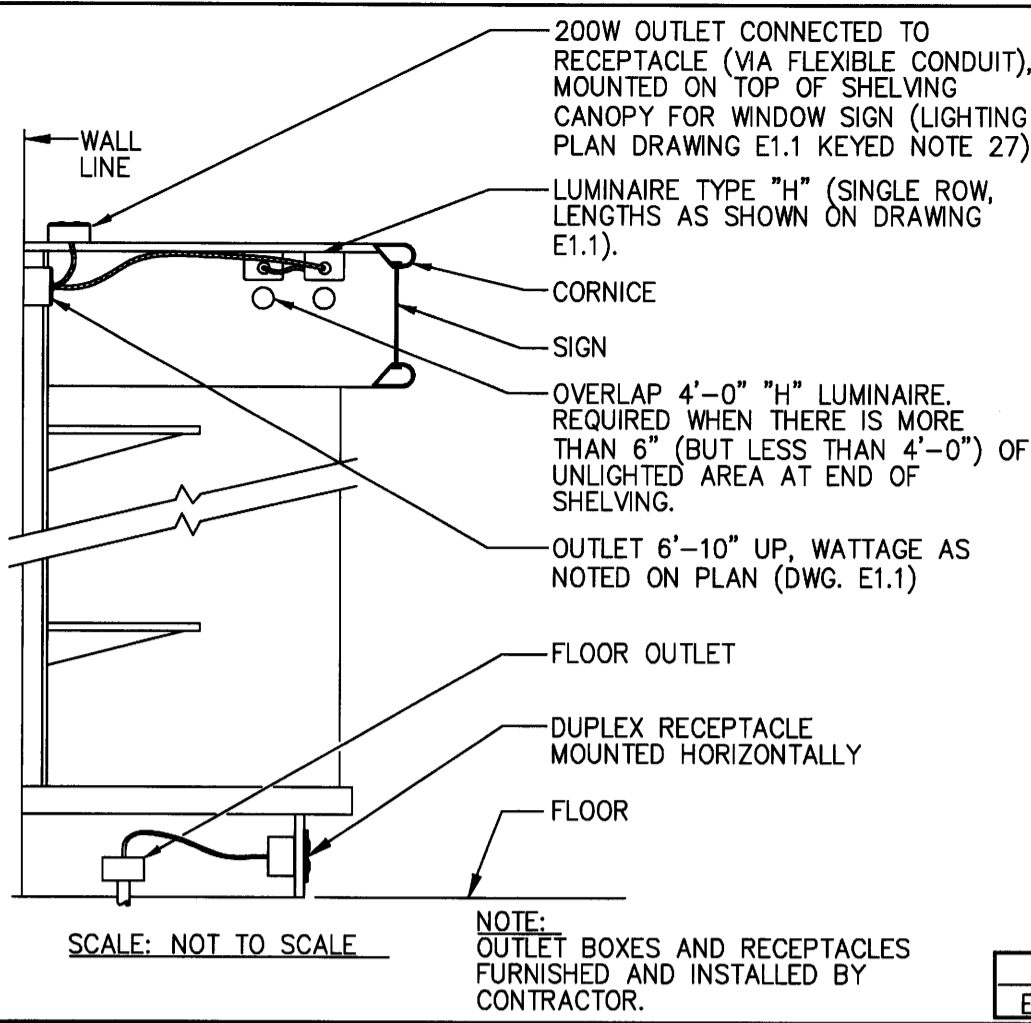
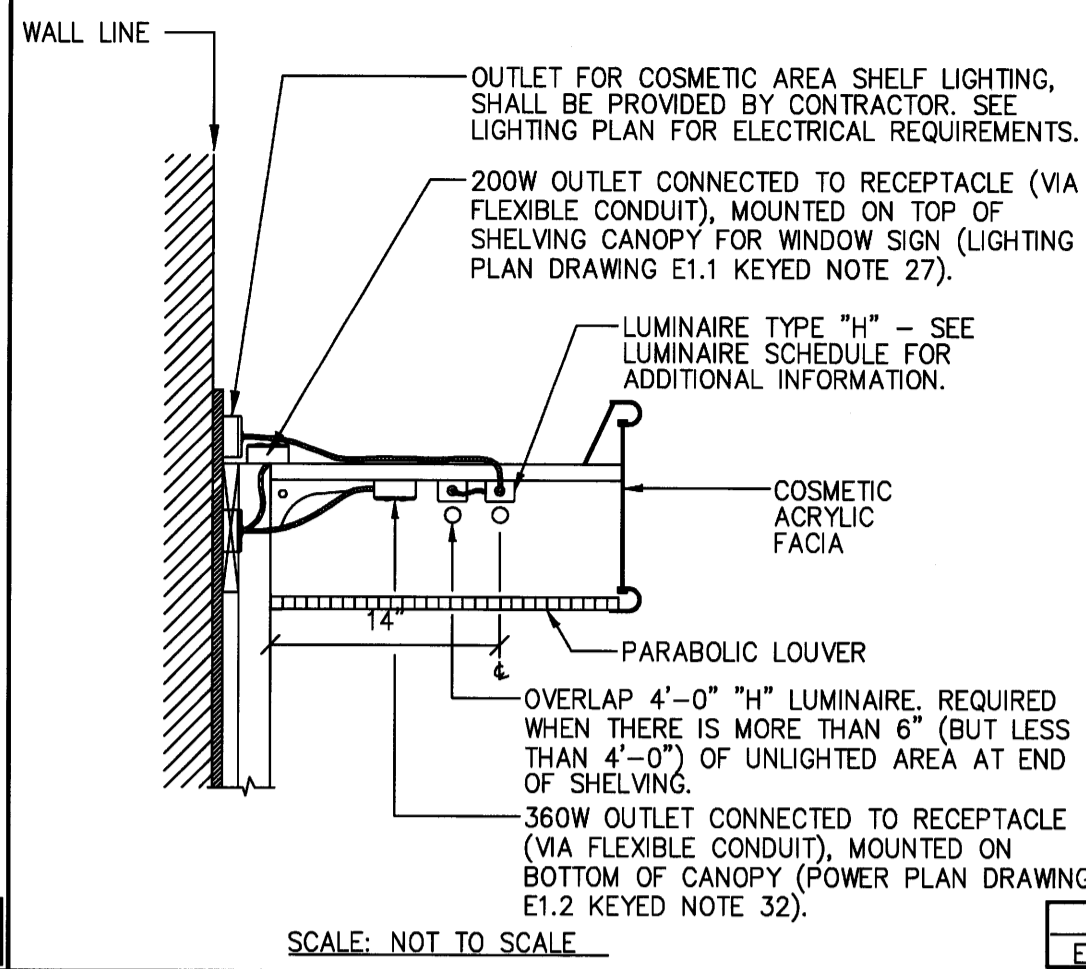


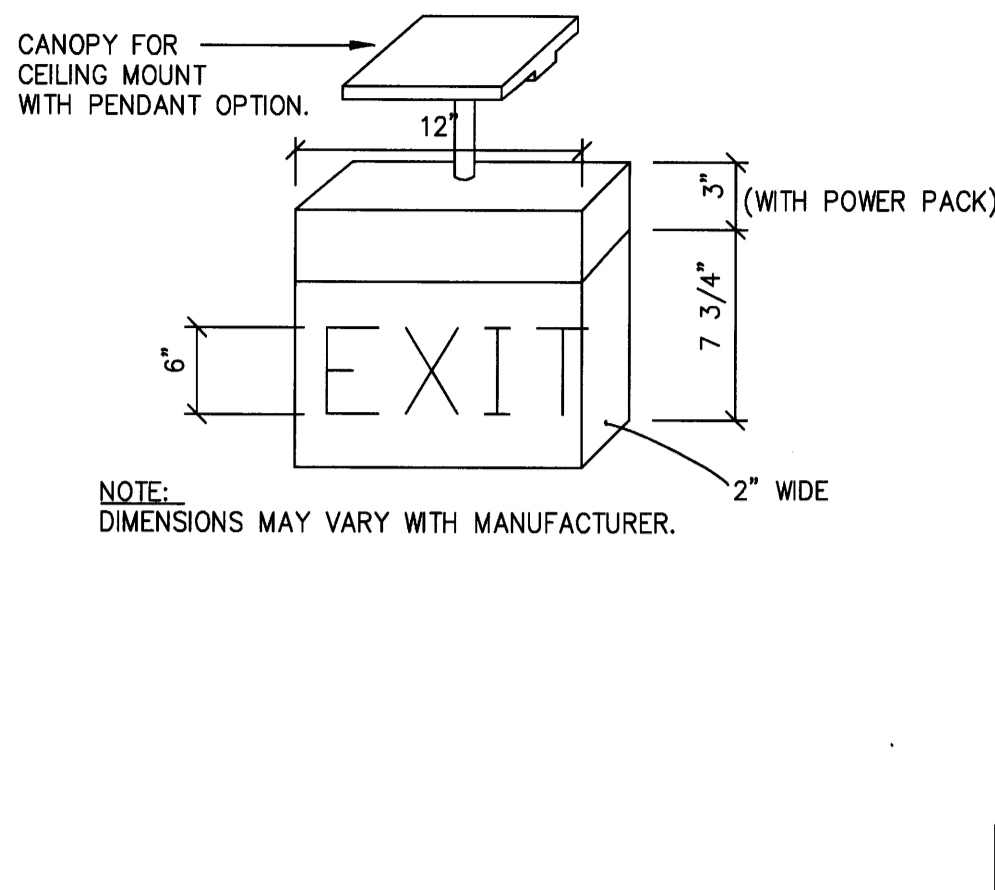
SELF SERVICE SHELVING LIGHTING DETAIL - LUMINAIRE TYPE 'H' AND RECEPTACLE DETAIL



LIGHTING DETAIL - LUMINAIRE TYPE 'H' (COSMETICS AREA)



EXIT SIGN DETAIL



LUMINAIRE SCHEDULE

| LUMINAIRE TYPE | CATALOG NUMBER | MANUFACTURER | LAMPS (SEE NOTE 3 BELOW) | MOUNTING | VOLTAGE | BALLAST (SEE NOTE 3 BELOW) | REMARKS |
|----------------|------------------------------------|------------------|---|--|------------|----------------------------|--|
| A | WBTRCG-232-UNV-AD-IOP4P32SC | METALUX | 4-GE#2818/SP35/UMX/ECO WITH ADVANCE BALLAST # IOP4P32SC | RECESSED | 95 | | |
| B | WRCG-232-UNV-AD-IOP2P32SC | METALUX | 2-GE#2818/SP35/UMX/ECO WITH ADVANCE BALLAST # IOP2P32SC | RECESSED | 48 | | |
| D | WC-232-UNV-AD-IOP2P32SC | METALUX | 2-GE#2818/SP35/UMX/ECO WITH ADVANCE BALLAST # IOP2P32SC | BOTTOM OF JOISTS OR CEILING | 48 | | LUMINAIRE TO BE MOUNTED 14'-0" A.F.F. UNLESS NOTED OTHERWISE. DO NOT ATTACH TO THE ROOF METAL DECK. ATTACH FROM ROOF SUPPORT. |
| E | WCHX-403C (CHICAGO) WSLX-70-RWH | SURE-LITES | 2-5W PL LAMPS LED | CEILING OR WALL MOUNT | | | SEE DETAIL 3/E4.1. SEE DETAIL 3/E4.1. |
| G | W2GR8-332A-UNV-AD-IOP3S32SC | METALUX | 3-GE#2818/SP35/UMX/ECO WITH ADVANCE BALLAST # IOP3S32SC | RECESSED | 72 | | |
| H | WSN-132-UNV-AD-IOP1P32SC | METALUX | GE#2818/SP35/UMX/ECO WITH ADVANCE BALLAST # IOP1P32SC | CORNICE | 25 | | SEE LIGHTING PLAN FOR TOTAL LENGTH REQUIRED, INCLUDE GLASS TOWER. |
| J | VFM-K-150-MH-120-WF-VR | MCGRAW-EDISON | GE#MH150 | CONDUIT STUD IN CONCRETE BASE AT GRND. | | | GROUND MOUNTED LUMINAIRE TO ILLUMINATE MONUMENT SIGN. |
| K | WBC-132-UNV-AD-IOP1P32SC | METALUX | GE#2818/SP35/UMX/ECO WITH ADVANCE BALLAST # IOP1P32SC | CEILING MOUNT | 25 | | PORTER CLOSET |
| L | WPD6-V14ZE-6VMB | PORTFOLIO | GE#2608XSPX354P | RECESSED | 26 | | PHARMACY PATIENT SEATING AREA |
| Q | WMHP-S-100-MT | LUMARK | GE#MXR100/U/MED | SURFACE | 129 | | UNDER AWNING, DRIVE-THRU WINDOW AND COMPACTOR AREA. SEE NOTE 9 |
| S | WHDR-100M-120-DGL-99-295 | FAIL-SAFE KENALL | GE#WDR100P/MED | RECESSED | 129 | | EXTERIOR. SEE NOTE 8. NOT USED |
| | NOT USED | - | - | - | - | | |
| W | WMHSF-50-120V-AD-RBC-FOS | LUMARK | GE#MXR50/U/MED | SURFACE | 69 | | FAÇADE ACCENT FIXTURE. (MOUNT ON TOP OF AWNING) SEE NOTE 6. FIXTURE HOUSING TO MATCH AWNING COLOR. WALGREENS PROTOTYPICAL STANDARD AWNING COLOR-ATAS KYNAR 500 "FOREST GREEN". ALTERNATE AWNING COLOR AVAILABLE FROM MANUFACTURER. (UTILIZE ONLY WITH AWNING ELEVATIONS) |
| D-1 | WC-232-UNV-AD-IOP2S32SC | METALUX | 2-GE#2818/SP35/UMX/ECO WITH ADVANCE BALLAST # IOP2S32SC | BOTTOM OF JOISTS OR CEILING | 49 | | LUMINAIRE TO BE MOUNTED 14'-0" A.F.F. UNLESS NOTED OTHERWISE. DO NOT ATTACH TO THE ROOF METAL DECK. ATTACH FROM ROOF SUPPORT. WHEN SWITCH THROUGH OCCUPANCY SENSOR. |
| G-1 | W2GR8-332A-UNV-AD-IOP3S32SC | METALUX | 3-GE#2818/SP35/UMX/ECO WITH ADVANCE BALLAST # IOP3S32SC | RECESSED | 72 | | USED WHEN SWITCH THROUGH OCCUPANCY SENSOR. |
| U-1 | WGR8-232A-UNV-AD-IOP2P32SC | METALUX | 2-GE#2818/SP35/UMX/ECO WITH ADVANCE BALLAST # IOP2P32SC | RECESSED | 48 | | |
| Y-1 | WCAL-400-MH-MT-AD-3F-BZ-CA40BZ | MCGRAW-EDISON | GE#MVR400/HOR/BT28 | ON POLE OR WALL (SEE NOTE 9) | | | SEE NOTE 6, TYPE III DISTRIBUTION. FOR LIGHT POLE SEE POLE SELECTION TABLE |
| Z-1 | WCAL-400-MH-MT-AD-3F-BZ-CA40BZ | MCGRAW-EDISON | GE#MVR400/HOR/BT28 | ON POLE (SEE NOTE 9) ON WALL | 930 465 | | SEE NOTE 6, TYPE IV DISTRIBUTION. FOR LIGHT POLE SEE POLE SELECTION TABLE |
| Z1-SL | WCAL-400-MH-MT-AD-SL-BZ-CA40BZ | MCGRAW-EDISON | GE#MVR400/HOR/BT28 | ON POLE (SEE NOTE 9) ON WALL | 930 465 | | TYPE IV DISTRIBUTION - SPILL LIGHT ELIMINATOR. FOR LIGHT POLE, SEE POLE SELECTION TABLE |
| B-2 | WBTV-232A-UNV-AD-IOP4P32SC | METALUX | 2-GE#2818/SP35/UMX/ECO WITH ADVANCE BALLAST # IOP4P32SC | SURFACE | 95 | | 8'-0" TANDEM UNIT. |
| B-2A | WW-232A-UNV-AD-IOP2P32SC | METALUX | 2-GE#2818/SP35/UMX/ECO WITH ADVANCE BALLAST # IOP2P32SC | SURFACE | 48 | | |
| B-2B | WBTV-232A-UNV-AD-IOP2S32SC | METALUX | 4-GE#2818/SP35/UMX/ECO WITH (2) ADVANCE BALLAST # IOP2S32SC | SURFACE | 97 | | 8'-0" TANDEM UNIT. USED WHEN SWITCH THROUGH OCCUPANCY SENSOR. |
| B-2C | WW-232A-UNV-AD-IOP2S32SC | METALUX | 2-GE#2818/SP35/UMX/ECO WITH ADVANCE BALLAST # IOP2S32SC | SURFACE | 49 | | USED WHEN SWITCH THROUGH OCCUPANCY SENSOR. |
| E-3 | WMHP-S-100-MT-EM/SC/12V | LUMARK | GE#MXR100/U/MED GE#35MR16/C/FL40 | SURFACE | 129 | | FRONT ENTRANCE (FOR STORE WITH AWNINGS ONLY), RECEIVING AND PASSAGE 1 EXIT DOORS. SEE NOTE 8 |
| E-4 | WCCT (NO HEADS) | SURE-LITES | N/A | SURFACE | | | FRONT ENTRANCE, RECEIVING AND PASSAGE 1 EXIT DOORS. |
| E-5 | WRFR153 | SURE-LITES | - | RECESSED CANOPY | 129 | | FRONT ENTRANCE (FOR STORES WITH CANOPY ONLY). SEE NOTE 8 |
| W-2 | K2ASW3A050PG68 | LIGHTOLIER | MH50P | EXTERIOR WALL | 69 | | GOOSENECK FIXTURE FOR LIGHTING OF INDIVIDUAL LETTER BUILDING SIGNS. |
| AEM | WBTRCG-232-UNV-AD-IOP4P32SC-B50 | METALUX | 4-GE#2818/SP35/UMX/ECO WITH ADVANCE BALLAST # IOP4P32SC & EMERGENCY BALLAST | RECESSED | 99 | | EMERGENCY BALLAST BODINE CAT. #B50 (SEE NOTE 12) |
| DEM | WC-232-UNV-AD-IOP2P32SC-B50 | METALUX | 2-GE#2818/SP35/UMX/ECO WITH ADVANCE BALLAST # IOP2P32SC & EMERGENCY BALLAST | BOTTOM OF JOISTS OR CEILING | 52 | | LUMINAIRE TO BE MOUNTED 14'-0" A.F.F. UNLESS NOTED OTHERWISE. DO NOT ATTACH TO THE ROOF METAL DECK. ATTACH FROM ROOF SUPPORT. [EMERGENCY BALLAST BODINE CAT. #B50 (SEE NOTE 12) AND |
| D1EM | WC-232-UNV-AD-IOP2S32SC-B50 | METALUX | 2-GE#2818/SP35/UMX/ECO WITH ADVANCE BALLAST # IOP2S32SC & EMERGENCY BALLAST | BOTTOM OF JOISTS OR CEILING | 53 | | LUMINAIRE TO BE MOUNTED 14'-0" A.F.F. UNLESS NOTED OTHERWISE. DO NOT ATTACH TO THE ROOF METAL DECK. ATTACH FROM ROOF SUPPORT. [EMERGENCY BALLAST BODINE CAT. #B50 (SEE NOTE 12) AND |
| G1EM | W2GR8-332A-UNV-AD-IOP3S32SC-B50 | METALUX | 3-GE#2818/SP35/UMX/ECO WITH ADVANCE BALLAST # IOP3S32SC & EMERGENCY BALLAST | RECESSED | 76 | | USED WHEN SWITCH THROUGH OCCUPANCY SENSOR. EMERGENCY BALLAST BODINE CAT. #B50 (SEE NOTE 12). |
| U1EM | WGR8-232A-UNV-AD-IOP2P32SC-B50 | METALUX | 2-GE#2818/SP35/UMX/ECO WITH ADVANCE BALLAST # IOP2P32SC & EMERGENCY BALLAST | RECESSED | 52 | | EMERGENCY BALLAST BODINE CAT. #B50 (SEE NOTE 12) |
| B2BEM | WBTV-232A-UNV-AD-IOP2S32SC-B50 | METALUX | 4-GE#2818/SP35/UMX/ECO WITH (2) ADVANCE BALLAST # IOP2S32SC & EMERGENCY BALLAST | SURFACE | 101 | | 8'-0" TANDEM UNIT. USED WHEN SWITCH THROUGH OCCUPANCY SENSOR. EMERGENCY BALLAST BODINE CAT. #B50 (SEE NOTE 12). |

| POLE TYPE | MANUFACTURER | WIND SPEED | | |
|------------------------------------|---------------|-----------------|------------------|------------------|
| | | 90MPH AND BELOW | 120MPH AND BELOW | 150MPH AND BELOW |
| 1-HEAD | MCGRAW-EDISON | WSS5-5M-30-SFE1 | WSS5-6M-30-SFE1 | WSS5-6Z-30-SFE1 |
| 2-HEADS | MCGRAW-EDISON | WSS5-5M-30-SFE2 | WSS5-6M-30-SFE2 | WSS5-6Z-30-SFE2 |
| 3-HEADS | MCGRAW-EDISON | WSS5-5M-30-SFE3 | WSS5-6X-30-SFE3 | WSS5-6Z-30-SFE3 |
| 3-HEADS WITH ONE "W-2" AT POLE TOP | MCGRAW-EDISON | WSS5-5M-30-SFE3 | WSS5-6X-30-SFE3 | NOT AVAILABLE |
| 3-HEADS WITH ONE "W-1" AT 9 FEET | MCGRAW-EDISON | WSS5-5M-30-SFE3 | WSS5-6X-30-SFE3 | WSS5-6Z-30-SFE3 |
| 4-HEADS | MCGRAW-EDISON | WSS5-5M-30-SFE4 | WSS5-6X-30-SFE4 | WSS5-6Z-30-SFE4 |
| 4-HEADS WITH ONE "W-1" AT 9 FEET | MCGRAW-EDISON | WSS5-5M-30-SFE4 | WSS5-6X-30-SFE4 | WSS5-6Z-30-SFE4 |

| OCCUPANCY SENSOR SCHEDULE | | | | | | |
|----------------------------------|--------------------|----------------|--------------|---------|--|---|
| LOCATION | MOTION SENSOR TYPE | CATALOG NUMBER | MANUFACTURER | VOLTAGE | MOUNTING | REMARKS |
| OFFICE | MS1 | OSCO5-UOW-WAL | LEVITON | 120VAC | MOUNT ON CEILING | LEVITON-UTILIZE W/ POWER PACK, OSP20-ODO-WAL. |
| MENS BATHROOM | MS1 | OSCO5-UOW-WAL | LEVITON | 120VAC | MOUNT ON CEILING | LEVITON-UTILIZE W/ POWER PACK, OSP20-ODO-WAL. |
| WOMENS BATHROOM | MS1 | OSCO5-UOW-WAL | LEVITON | 120VAC | MOUNT ON CEILING | LEVITON-UTILIZE W/ POWER PACK, OSP20-ODO-WAL. |
| EMPLOYEE ROOM | MS2 | ODS15-ID-WAL | LEVITON | 120VAC | MOUNT ON WALL @ 42" A.F.F. | SEE NOTE 3 |
| TRAINING ROOM/MULTI-PURPOSE ROOM | MS2 | ODS15-ID-WAL | LEVITON | 120VAC | MOUNT ON WALL @ 42" A.F.F. | SEE NOTE 3 |
| PASSAGEWAY #1 | MS4 | OSCO4-UOW-WAL | LEVITON | 120VAC | MOUNT ON LUMINAIRE, AS NOTED ON DRAWING E1.1 (OR CEILING, IF APPLICABLE) | LEVITON-UTILIZE W/ POWER PACK, OSP20-ODO-WAL. |
| GENERAL STOCKROOM | MS3 | OSCO4-IOW-WAL | LEVITON | 120VAC | MOUNT ON LUMINAIRE, AS NOTED ON DRAWING E1.1 (OR CEILING, IF APPLICABLE) | LEVITON-UTILIZE W/ POWER PACK, OSP20-ODO-WAL & MOUNTED IN A 3" X-BOX. SEE NOTE 1. |

NATIONAL ACCOUNTS

I. LUMINAIRES

A. WALGREENS, ITS DEVELOPERS AND THEIR CONTRACTORS WORKING ON WALGREENS PROJECTS LOCATED IN ALABAMA, CALIFORNIA, CONNECTICUT, DELAWARE, FLORIDA, GEORGIA, HAWAII, ILLINOIS, INDIANA, KENTUCKY, MAINE, MARYLAND, MASSACHUSETTS, MICHIGAN, MISSISSIPPI, NEW HAMPSHIRE, NEW JERSEY, NEW YORK, NORTH CAROLINA, OHIO, PENNSYLVANIA, RHODE ISLAND, SOUTH CAROLINA, TENNESSEE, TEXAS, VERMONT, VIRGINIA, WASHINGTON D.C., WEST VIRGINIA, WISCONSIN AND PUERTO RICO MUST CALL GESCO FOR COOPER LUMINAIRES FOR PRICE QUOTES AND BILL OF MATERIAL CONFIRMATION FOR THEIR SPECIFIC PROJECT AT (630) 718-6599.

B. WALGREENS, ITS DEVELOPERS AND THEIR CONTRACTORS WORKING ON WALGREENS PROJECTS LOCATED IN ARIZONA, ARKANSAS, COLORADO, IDAHO, IOWA, KANSAS, LOUISIANA, MINNESOTA, MISSOURI, MONTANA, NEBRASKA, NEVADA, NEW MEXICO, NORTH DAKOTA, OKLAHOMA, OREGON, SOUTH DAKOTA, UTAH, WASHINGTON, AND WYOMING MUST CALL VILLA LIGHTING FOR LITHONIA LUMINAIRES FOR PRICE QUOTES AND BILL OF MATERIAL CONFIRMATION FOR THEIR SPECIFIC PROJECT AT (800) 325-0963.

II. LAMPS

A. WALGREENS, ITS DEVELOPERS AND THEIR CONTRACTORS WORKING ON WALGREENS PROJECTS MUST CALL VILLA LIGHTING AT (800) 325-0963.

B. THE GENERAL CONTRACTORS WILL SELECT AN ELECTRICAL CONTRACTOR TO PURCHASE AND INSTALL THE LAMP PACKAGE. PURCHASE ORDERS TO VILLA LIGHTING WILL BE ISSUED BY THE ELECTRICAL CONTRACTOR FOR ALL STORES.

III. OCCUPANCY SENSORS

A. WALGREENS, ITS DEVELOPERS AND THEIR CONTRACTORS WORKING ON WALGREENS PROJECTS LOCATED IN ALABAMA, CALIFORNIA, CONNECTICUT, DELAWARE, FLORIDA, GEORGIA, HAWAII, ILLINOIS, INDIANA, KENTUCKY, MAINE, MARYLAND, MASSACHUSETTS, MICHIGAN, MISSISSIPPI, NEW HAMPSHIRE, NEW JERSEY, NEW YORK, NORTH CAROLINA, OHIO, PENNSYLVANIA, RHODE ISLAND, SOUTH CAROLINA, TENNESSEE, TEXAS, VERMONT, VIRGINIA, WASHINGTON D.C., WEST VIRGINIA, WISCONSIN AND PUERTO RICO MUST CALL GESCO FOR LEVITON OCCUPANCY SENSORS AT (630) 718-6599.

B. WALGREENS, ITS DEVELOPERS AND THEIR CONTRACTORS WORKING ON WALGREENS PROJECTS LOCATED IN ARIZONA, ARKANSAS, COLORADO, IDAHO, IOWA, KANSAS, LOUISIANA, MINNESOTA, MISSOURI, MONTANA, NEBRASKA, NEVADA, NEW MEXICO, NORTH DAKOTA, OKLAHOMA, OREGON, SOUTH DAKOTA, UTAH, WASHINGTON, AND WYOMING MUST CALL VILLA LIGHTING FOR HUBBELL OCCUPANCY SENSORS AT (800) 325-0963.

C. THE GENERAL CONTRACTORS WILL SELECT AN ELECTRICAL CONTRACTOR TO PURCHASE AND INSTALL THE OCCUPANCY SENSORS. PURCHASE ORDERS TO GESCO OR VILLA LIGHTING WILL BE ISSUED BY THE ELECTRICAL CONTRACTOR FOR ALL STORES.

NOTES:

1. OCCUPANCY SENSORS IN STOCKROOM/RECEIVING AREA SHALL BE DIVIDED INTO TWO (2) ZONES:
ZONE 1 - RECEIVING AREA AND PARTIAL STOCKROOM, COMPRISING OF:
LEVITON (2) OSCO4-IOW-WAL SENSOR & (1) ODP20-ODO-WAL POWER PACK, OR
LEVITON (2) OSCO4-IOW-WAL SENSOR & (1) ODP20-ODO-WAL POWER PACK, OR

2. OCCUPANCY SENSORS SHOWN IN DRAWING E1.1 ARE FOR PROTOTYPICAL WALGREENS STORE LAYOUT. CONTACT LEVITON FOR ADDITIONAL TECHNICAL LAYOUT, WIRING, OR INSTALLATION QUESTIONS ON OTHER STORE LAYOUT.

3. LOAD REQUIREMENT: LHBS1W IS 0-1000W BALLAST @ 120VAC, 50/60HZ AND 0-1800W BALLAST @ 277VAC, 50/60HZ. QDS15-ID-WAL IS 1800VA @120V/4000VA@277V (FLUORESCENT)

4. ULTRASONIC SENSOR IS MADE FOR OFF-CENTER CEILING MOUNT. SEE DRAWING E1.1 FOR AN APPROXIMATE LOCATION. ULTRASONIC CEILING MOUNT SENSOR REQUIRE IT BE MOUNTED NO CLOSER THAN 4' TO AIR SUPPLY/RETURN REGISTERS.

5. WHEN SPECIFYING THE PLACEMENT OF ULTRASONIC SENSORS, DIRECTION OF THE RECEIVERS SHOULD BE CLEARLY SHOWN.

6. FINAL DETERMINATION OF CIRCUITING, VOLTAGE AND QUANTITY OF POWER PACKS REQUIRED ARE THE RESPONSIBILITIES OF THE CONSULTING ENGINEER AND OR THE ELECTRICAL CONTRACTOR.

7. OCCUPANCY SENSORS SETTINGS (TIME DELAY, SENSITIVITY, ETC) ARE FACTORY PRE-PROGRAMMED PRIOR TO SHIPPING IN STORE.

PATRICK CLAPP
LEVITON MANUFACTURING CO., INC
59-25 LITTLE NECK PARKWAY
LITTLE NECK, NY 11362-2561
TEL - (718) 281-6822
FAX - (718) 281-6047
e-mail: pccapp@leviton.com

NOTES:

1. ALL FLUORESCENT LUMINAIRES TO HAVE ADVANCE TRANSFORMER ELECTRONIC BALLASTS.

2. ALL LUMINAIRES TO HAVE QUICK ACCESS BALLASTS FROM BELOW CEILING (THROUGH FIXTURE).

3. G.E. INDICATES GENERAL ELECTRIC COMPANY.

4. ALL LUMINAIRES SHALL BE SHIPPED WITHOUT LAMPS.

5. NOT USED.

6. (ADD "CA11" (TYPE III) OR "CA18" (TYPE IV) SUFFIX TO MCGRAW-EDISON FOR SHIELD ACCESSORY KIT).

7. VERIFY ALL LUMINAIRE DIMENSIONS WITH MANUFACTURER TO AVOID CONFLICTS WITH OTHER DISCIPLINES.

8. U.L. LISTED WET LOCATION AND IP64 FOR MAXIMUM INSECT, DUST, AND WATER PROTECTION.

9. SEE DRAWINGS E0.1 AND E0.1A FOR MOUNTING LOCATION. COORDINATE MOUNTING WITH WALGREENS AND MATERIALS INVOLVED. HARDWARE PER MANUFACTURER'S INSTRUCTIONS.

10. ALL 250 WATT METAL HALIDE FIXTURES WITH A HORIZONTAL BURNING LAMP MUST HAVE A SOCKET THAT ACCEPTS A "POS MOG E" LAMP.

11. ADD THE FOLLOWING ACCESSORIES FOR THE "T" LUMINAIRE:
HALO PART #:
LIVE END CONNECTOR L901P
FLEXIBLE CONNECTOR L902P
1 CIRCUIT TRACK SYSTEM L852P (8'-0")
LENS -

12. ALL EMERGENCY BALLASTS ARE 1400 LUMENS (2-LAMP OPERATION).

MOESER & ASSOCIATES ARCHITECT
206 AYER ROAD HARVARD, MA 978-456-6905

DRAWINGS/SPECIFICATIONS BY:
 WALGREENS'
 LANDLORD'S CONSULTANT

ALL CONSTRUCTION WORK, UNLESS NOTED OTHERWISE, BY:
 WALGREENS' CONTRACTOR
 LANDLORD'S CONTRACTOR (TURNKEY CONSTRUCTION)

| STORE | BUILDING |
|---|---|
| NEW <input checked="" type="checkbox"/> | NEW <input checked="" type="checkbox"/> |
| REMODELING <input type="checkbox"/> | EXISTING <input type="checkbox"/> |
| RELOCATION <input type="checkbox"/> | NEW SHELL ONLY <input type="checkbox"/> |
| OTHERS <input type="checkbox"/> | |

| NO. | DATE | BY | DESCRIPTION | CONST |
|--|------|----|-------------|-------|
| REVISIONS | | | | |
| CERTIFICATION AND SEAL | | | | |
| I HEREBY CERTIFY THAT THIS PLAN AND SPECIFICATION WAS PREPARED BY ME OR UNDER MY DIRECT SUPERVISION AND THAT I AM A DULY REGISTERED ARCHITECT OR ENGINEER UNDER THE LAWS OF THE STATE OF MAINE AS SIGNIFIED BY MY HAND AND SEAL. | | | | |

FISCAL 2007 CRITERIA - STORE #12325

WALGREENS
616 FOREST AVENUE
PORTLAND, MAINE

DRAWING TITLE
LIGHTING SCHEDULE AND DETAILS

| | | |
|--------------------------|------------------|-------------|
| CADD PLOT: | SCALE: AS NOTED | DRAWING NO. |
| VOID PLOT: | DRAWN BY: RJV | E4.1 |
| RELEASED TO CONSTRUCTION | DATE: 12-10-08 | |
| | REVIEWED BY: SAM | |