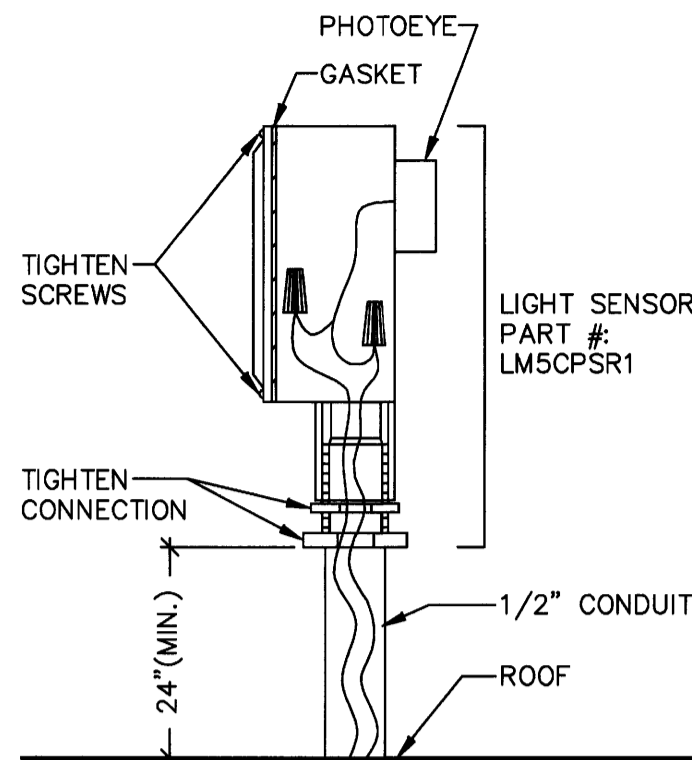


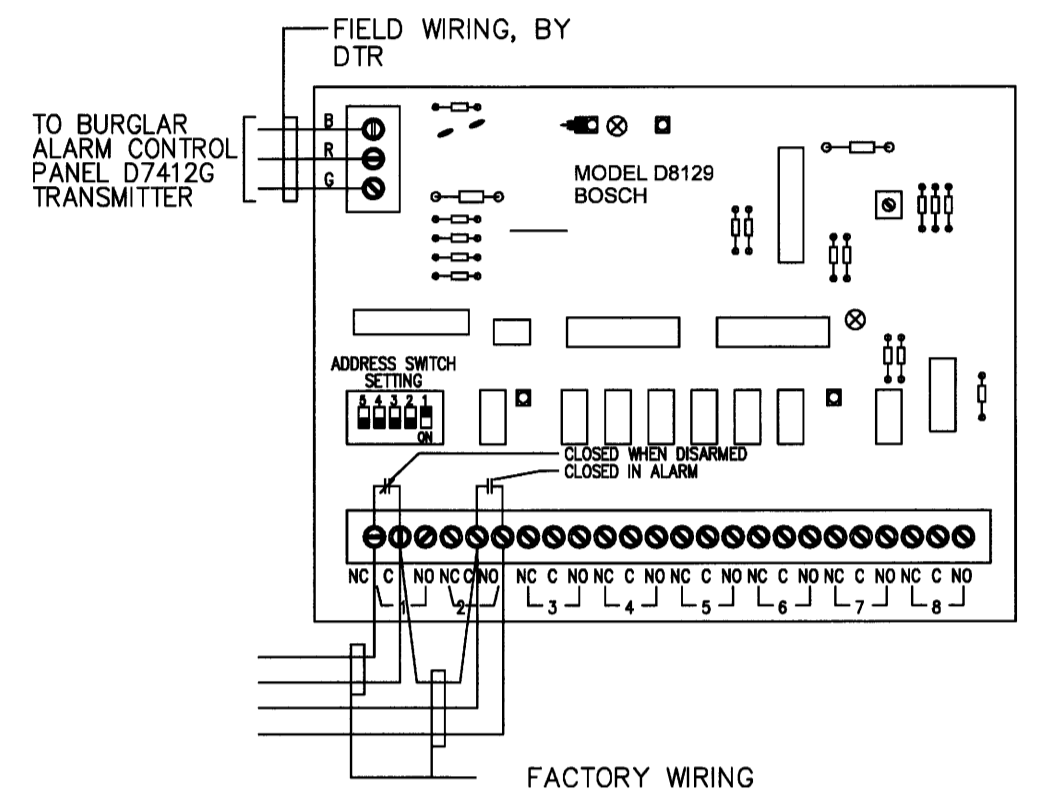
DRAWINGS/SPECIFICATIONS BY:
 WALGREENS
 LANDLORD'S CONSULTANT
 ALL CONSTRUCTION WORK, UNLESS NOTED OTHERWISE, BY:
 WALGREENS' CONTRACTOR
 LANDLORD'S CONTRACTOR (TURNKEY CONSTRUCTION)

STORE	BUILDING
NEW <input checked="" type="checkbox"/>	NEW <input checked="" type="checkbox"/>
REMODELING <input type="checkbox"/>	EXISTING <input type="checkbox"/>
RELOCATION <input type="checkbox"/>	NEW SHELL ONLY <input type="checkbox"/>
OTHERS <input type="checkbox"/>	



PHOTOCELL INSTALLATION DETAIL
(FOR G.E.)
NOT TO SCALE

- NOTES:
- ELECTRICAL CONTRACTOR MUST INSTALL PHOTOCELL (G.E. AND SQ."D") AS SHOWN ON THE DETAIL.
 - NOT USED.
 - PHOTOCELL SENSOR EYE MUST BE INSTALLED ON THE ROOF FACING NORTH.
 - PHOTOCELL EYE MUST NOT FACE ARTIFICIAL LIGHT SOURCES (SUCH AS STREETLIGHTS, ETC.).
 - PHOTOCELL SENSOR IS MOISTURE SENSITIVE. CONNECTIONS MUST BE TIGHTENED PROPERLY. THE WHOLE ASSEMBLY MUST BE WATER TIGHT.
 - CONDUIT WITH PHOTOCELL SENSOR WIRING SHALL PENETRATE ROOF VIA SATELLITE ANTENNA PORTAL. PROPER CONDUIT SUPPORT IS EXTREMELY IMPORTANT.
 - PHOTOCELL SENSOR WIRING MUST NOT SHARE THE SAME CONDUIT WITH POWER WIRING.



BOSCH D8129 RELAY MODULE
NOT TO SCALE

TESTING

THE FOLLOWING TEST MUST BE PERFORMED BY ELECTRICAL CONTRACTOR:

- PHARMACY OVERRIDES**
CHECK THAT LOCAL OVERRIDES AND OVERRIDE PUSHBUTTON ON PANEL "LP-SP" DOOR WORKS.
- OVERRIDES OTHER THAN PHARMACY**
CHECK THAT OVERRIDE WORKS.
- SECURITY INTERLOCK**
INITIAL CONDITIONS:
- OVERRIDE PUSHBUTTONS/SWITCHES ON PANEL "LP-SP" DOOR SHALL BE OFF.
- ALL THE LIGHTS INSIDE THE STORE SHALL BE ON.
- ALL EXTERIOR LIGHTS SHALL BE OFF (EXCEPT LIGHTS ON CIRCUIT 14 COULD BE ON IF IT IS DARK OUTSIDE).
ACTIONS:
- DISCONNECT WIRE ON TERMINAL "NC" (RELAY 1) IN D8129 RELAY MODULE.
RESULTS:
- ALL INTERIOR LIGHTS (EXCEPT NIGHT LIGHTS) SHALL TURN OFF.
- SECURITY INTERLOCK. (CONT'D.)**
INITIAL CONDITIONS:
- WIRE ON TERMINAL "NC" IS STILL DISCONNECTED AND ALL INTERIOR LIGHTS (EXCEPT NIGHT LIGHTS) ARE STILL OFF.
ACTIONS:
- INSTALL JUMPER BETWEEN TERMINALS "C" AND "NO" (RELAY 2) IN D8129 RELAY MODULE.
RESULTS:
- ALL INTERIOR LIGHTS AND ALL EXTERIOR LIGHTS MUST TURN ON.
REMOVE JUMPER BETWEEN TERMINALS "C" AND "NO" (RELAY 2) AND RESTORE WIRE ON TERMINAL "NC" (RELAY 1).
- INTERLOCK WITH HONEYWELL CONTROLLER**
(APPLIES TO G.E. AND SQ. "D" ONLY)
- HONEYWELL CONTROLLER: SET STAGE 1 DIAL AT #3 AND STAGE 2 DIAL AT #8.
- "SET/RUN" SWITCH MUST BE IN "RUN" POSITION.
- SECURITY SYSTEM SHALL BE DISARMED.
ACTIONS: COVER PHOTOCELL (USE TWO GLOVES OR CARDBOARD BOX. MUST NOT USE TAPE!!!).
RESULTS:
- TIME BEFORE 7:30 AM - ALL OUTSIDE LIGHTS (EXCEPT LIGHTS ON CIRCUIT #14) MUST BE OFF.
- TIME BETWEEN 7:30 AM-8:00 AM: CIRCUIT #14 MUST BE ON.
PARKING LIGHTS (CIRCUITS 30/32 = GROUP 8) SHALL TURN ON.
- TIME AFTER 8:00 AM - SIGNS, CANOPY, FLOODS AND THE REST OF THE PARKING LOT LIGHTS (ALL THE CIRCUITS, GROUPS #6, 7, 8, 9, 10, 12) MUST TURN ON.
ACTIONS: WITH ALL EXTERIOR LIGHTS STILL ON DISCONNECT WIRE ON TERMINAL "NC" (RELAY 1) IN D8129 RELAY MODULE.
RESULTS:
- SIGNS, CANOPY, FLOODS (GROUPS 7, 10, 12) MUST TURN OFF.
- 15 MINUTES LATER ALL PARKING LOT LIGHTS (GROUPS 8 & 9) MUST TURN OFF.
- RESTORE WIRE ON TERMINAL "NC" (RELAY 1) IN D8129 RELAY MODULE.
UNCOVER PHOTOCELL.

- FINAL HONEYWELL CONTROLLER ADJUSTMENT:
(APPLIES TO G.E. AND SQ. "D" ONLY)
SETTING #3 FOR STAGE 1 DIAL (PARKING LOT) AND #8 FOR STAGE 2 DIAL (SIGNS AND AWNING/CANOPY) MENTIONED ABOVE ARE PRELIMINARY. THE ACTUAL SETTINGS MUST BE DONE IN THE EVENING BEFORE DARK OR EARLY IN THE MORNING WHEN IT IS STILL DARK.
- EVENING ADJUSTMENT:**
- REMOVE HONEYWELL CONTROLLER PLASTIC COVER (ONE SCREW).
 - SET "SET/RUN" SWITCH TO "SET" POSITION. SET BOTH DIALS (STAGE 1 AND STAGE 2) AT #1. BOTH RED LED'S SHALL BE OFF. ALL EXTERIOR LIGHTS SHALL BE OFF.
 - AT DUSK (APPROXIMATELY 100FC) SLOWLY ROTATE STAGE 2 DIAL TOWARD BIGGER NUMBERS UNTIL RED LED BELOW DIAL TURNS ON. CHECK THAT ALL SIGNS AND AWNINGS/CANOPY LIGHTS ARE ON.
 - WAIT TILL IT GETS DARKER. AT APPROXIMATELY 20 FC SLOWLY ROTATE STAGE 1 DIAL TOWARD BIGGER NUMBERS UNTIL RED LED BELOW DIAL TURNS ON. CHECK THAT ALL EXTERIOR LIGHTS ARE ON.
 - TURN "SET/RUN" SWITCH TO "RUN" POSITION AND REPLACE PLASTIC COVER.
- MORNING ADJUSTMENT:**
- REMOVE HONEYWELL CONTROLLER PLASTIC COVER (ONE SCREW).
 - SET "SET/RUN" SWITCH TO "SET" POSITION. SET BOTH DIALS (STAGE 1 AND STAGE 2) AT #10. BOTH RED LED'S SHALL BE ON. ALL EXTERIOR LIGHTS SHALL BE ON.
 - WAIT TILL IT GETS BRIGHTER. AT LIGHT LEVEL SLIGHTLY HIGHER THAN 20 FC SLOWLY ROTATE STAGE 1 DIAL TOWARD SMALLER NUMBERS UNTIL RED LED BELOW TURNS OFF. CHECK THAT PARKING LOT, WALLPACKS, AND FLOODLIGHTS ARE OFF.
 - WAIT AT LIGHT LEVEL SLIGHTLY HIGHER THAN 100FC SLOWLY ROTATE STAGE 2 DIAL TOWARD SMALLER NUMBERS UNTIL RED LED BELOW TURNS OFF. CHECK THAT ALL EXTERIOR LIGHTS ARE OFF.
 - TURN "SET/RUN" SWITCH TO "RUN" POSITION AND REPLACE PLASTIC COVER.
- SALES AREA (REFER TO GROUPS 1, 2 & 3 LOGIC, E2.1A)**
VERIFY THE FOLLOWING:
 a. TIME: BEFORE 7:55 AM AND SECURITY SYSTEM IS DISARMED - ONLY "MAINTENANCE LIGHTS" - CIRCUITS (21,24,25) MUST BE ON. (EVERY OTHER FIXTURE IN SIX ROWS OF LIGHTS SPACED EVENLY).
 b. TIME: AFTER 7:55 AM - ALL THE SALES AREA AND THE REST OF GROUP 2 CIRCUITS MUST BE ON.
 c. TIME: 10:10 PM - 10:30 PM - ONLY SIX CIRCUITS (21,24,25,13,22,27) MUST BE ON (EVERY OTHER FIXTURE IN TWELVE ROWS OF LIGHTS SPACED EVENLY). ALL THE CIRCUITS OF GROUP 2 MUST BE OFF.
 d. TIME: AFTER 10:30 PM - ALL THE CIRCUITS TURN OFF EXCEPT GROUP #1.
- PHARMACY (REFER TO GROUP 5 LOGIC, E2.1A)**
VERIFY THE FOLLOWING:
 a. TIME: BEFORE 7:55 AM PHARMACY LIGHTS (CIRCUITS 1, & 3) MUST BE OFF.
 b. TIME: AFTER 7:55 AM ALL PHARMACY LIGHTS MUST BE ON.
 c. TIME: 10:30 PM - ALL PHARMACY LIGHTS MUST BE OFF.
- CONDOLA RECEPTACLES**
VERIFY THE FOLLOWING:
 a. TIME: BEFORE 7:55 AM - RECEPTACLES (CIRCUITS 25,27,29,31,33,35) MUST BE DE-ENERGIZED.
 b. TIME: AFTER 7:55 AM - ALL RECEPTACLES CIRCUITS MUST BE ENERGIZED.
 c. TIME: 10:10 PM - ALL RECEPTACLE CIRCUITS MUST BE DE-ENERGIZED.

- 9. TEMPERATURE CONTROLLER:**
- NOTES:
 1. TORCH OR HEAT GUN MUST NOT BE USED TO WARM SENSOR.
 2. HEATER MAY NOT TURN ON BECAUSE ITS THERMOSTAT SETTING IS TOO LOW (DURING THE TEST THERMOSTAT SETTING COULD BE RAISED TEMPORARILY).
 3. SENSOR WARMING TAKES A FEW MINUTES.
- ABBREVIATION:**
 WH = WALL HEATERS
 EH = ENTRANCE HEATER
 TERMINAL "NC" = TERMINAL "NC" (RELAY 1) IN D8129 RELAY MODULE
 WARM SENSOR = SENSOR SHOULD BE WARMED WITH HANDS
 COOL SENSOR WITH SPRAY = SPRAY SENSOR WITH "COMPONENT COOLER" (PURCHASE THROUGH RADIO SHACK)
 COOL SENSOR WITH ICE = USE CUP WITH ICE
 T = TEMPERATURE
- A. NON-24 HOUR STORE**
- OUTSIDE TEMPERATURE (SHOWN ON CONTROLLER DISPLAY) BELOW 25F.
 a. WITH SECURITY DISARMED VERIFY THAT WH AND EH ARE ON. WARM SENSOR. VERIFY THAT WH AND EH TURN OFF (AT T ABOVE 50F).
 ALLOW SENSOR TO COOL TO OUTSIDE TEMPERATURE (WATCH CONTROLLER DISPLAY).
 b. DISCONNECT WIRE ON TERMINAL "NC".
 VERIFY THAT WH AND EH (FOR STORE WITH VESTIBULE) ARE ON; EH FOR STORE WITHOUT VESTIBULE SHALL BE OFF. WARM SENSOR.
 VERIFY THAT WH TURN OFF (AT T ABOVE 25F) AND EH FOR STORES WITH VESTIBULES TURN OFF (AT T ABOVE 32F).
 RESTORE WIRE ON TERMINAL "NC".
 - OUTSIDE TEMPERATURE ABOVE 25F BUT BELOW 50F.
 a. WITH SECURITY DISARMED VERIFY THAT WH AND EH ARE ON. WARM SENSOR. VERIFY THAT WH AND EH TURN OFF (AT T ABOVE 50F).
 ALLOW SENSOR TO COOL TO OUTSIDE TEMPERATURE.
 b. DISCONNECT WIRE ON TERMINAL "NC".
 VERIFY THAT:
 1. WH AND EH FOR STORE WITHOUT VESTIBULE ARE OFF; EH FOR STORE WITH VESTIBULE SHALL BE ON (IF T BELOW 32 F).
 FOR STORE WITH VESTIBULE WARM SENSOR AND VERIFY THAT EH TURN OFF (AT T ABOVE 32F).
 COOL SENSOR WITH SPRAY.
 WH AND EH SHALL TURN ON.
 RESTORE WIRE ON TERMINAL "NC".
 - OUTSIDE TEMPERATURE ABOVE 50F.
 a. WITH SECURITY DISARMED VERIFY THAT WH AND EH ARE OFF. DISCONNECT WIRE ON TERMINAL "NC" - VERIFY THAT WH AND EH ARE OFF. RESTORE WIRE ON TERMINAL "NC".
 b. DISCONNECT WIRE ON TERMINAL "NC".
 c. COOL SENSOR WITH SPRAY. VERIFY THAT WH AND EH TURN ON. DISCONNECT WIRE ON TERMINAL "NC" - WH AND EH SHALL BE ON.
 RESTORE WIRE ON TERMINAL "NC".
- B. 24 HOUR STORES**
- OUTSIDE TEMPERATURE ABOVE 50F.
 a. WH AND EH SHALL BE OFF.
 b. COOL SENSOR WITH ICE. WH AND EH SHALL TURN ON (AT T BELOW 50F).
 c. WH AND EH SHALL BE ON.
 d. WARM SENSOR. WH AND EH SHALL TURN OFF (AT T ABOVE 50F).

NO.	DATE	BY	DESCRIPTION	CONST

REVISIONS

CERTIFICATION AND SEAL

I HEREBY CERTIFY THAT THIS PLAN AND SPECIFICATION WAS PREPARED BY ME OR UNDER MY DIRECT SUPERVISION AND THAT I AM A DULY REGISTERED ARCHITECT OR ENGINEER UNDER THE LAWS OF THE STATE OF MAINE AS SIGNIFIED BY MY HAND AND SEAL.

FISCAL 2007 CRITERIA - STORE #12325

WALGREENS
616 FOREST AVENUE
PORTLAND, MAINE

DRAWING TITLE
TESTING & MISCELLANEOUS ELECTRICAL DETAILS

CADD PLOT:	SCALE: AS NOTED	DRAWING NO.
VOID PLOT:	DRAWN BY: RJV	E2.1C
RELEASED TO CONSTRUCTION	DATE: 12-10-08	
	REVIEWED BY: SAM	