

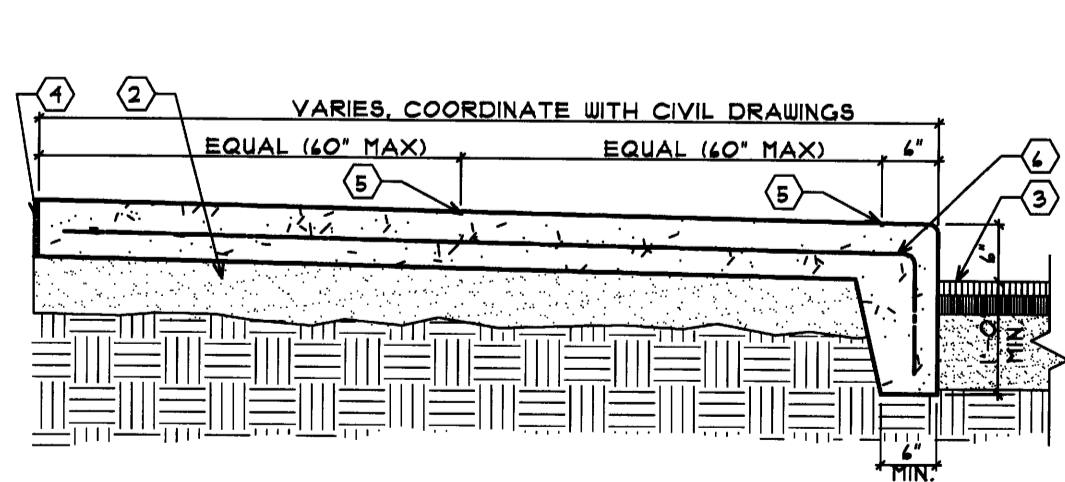
SIDEWALK & CURB NOTE:
REFER TO CIVIL DRAWINGS FOR DIMENSIONS AND DETAILS (TYP.)

NOTE:
ASPHALT PAVING AT ACCESSIBLE PARKING STALLS AND ACCESS AREAS IS FURNISHED WITH CONCRETE SIDEWALK. PAVING SHALL SLOPE 1:50 MAX AWAY FROM SIDE WALK AT THESE AREAS. PAVING SHALL SLOPE 1:20 MAX. ALONG CURB AWAY FROM THESE AREAS. REFER TO CIVIL DRAWINGS.

KEYED NOTES

- 1 ACCESSIBLE RAMP - REFER TO CIVIL DRAWINGS FOR DIMENSIONS AND DETAILS.
- 2 CONCRETE WALK WITH TOOLED CONTROL JOINTS (5'-0" MAX.) AND BROOM FINISH. REFER TO CIVIL DRAWINGS FOR DIMENSIONS AND DETAILS.
- 3 CONCRETE RECEIVING PAD. REFER TO CIVIL DRAWINGS FOR ADDITIONAL INFORMATION.
- 4 PIPE BUMPER GUARDS. REFER TO CIVIL DRAWINGS FOR DETAIL.
- 5 HANDICAP SIGNAGE. REFER TO CIVIL DRAWINGS FOR DETAILS.
- 6 CONCRETE PAD 6" BELOW FINISHED FLOOR. SLOPE ADJACENT PAVEMENT TO MEET CONCRETE. REFER TO SHEET A4.4 FOR ADDITIONAL INFORMATION.
- 7 COMPACTOR ENCLOSURE. REFER TO SHEET A2.5 FOR DIMENSIONS AND DETAILS.
- 8 TOTE STORAGE ENCLOSURE. REFER TO CIVIL DRAWINGS FOR DETAILS.
- 9 CONTINUOUS 36" WIDE TACTILE SURFACE ALONG SIDEWALK IN FRONT OF ACCESSIBLE PARKING STALLS AND ACCESS AREAS. REFER TO CIVIL DRAWINGS FOR DETAILS.
- 10 CONCRETE CURB. REFER TO SHEET A4.4 FOR ADDITIONAL INFORMATION.
- 11 LANDSCAPE AREA. REFER TO CIVIL DRAWINGS FOR ADDITIONAL INFORMATION.

8 PLAN - CONCRETE SIDEWALK & PADS
SCALE: N.T.S.



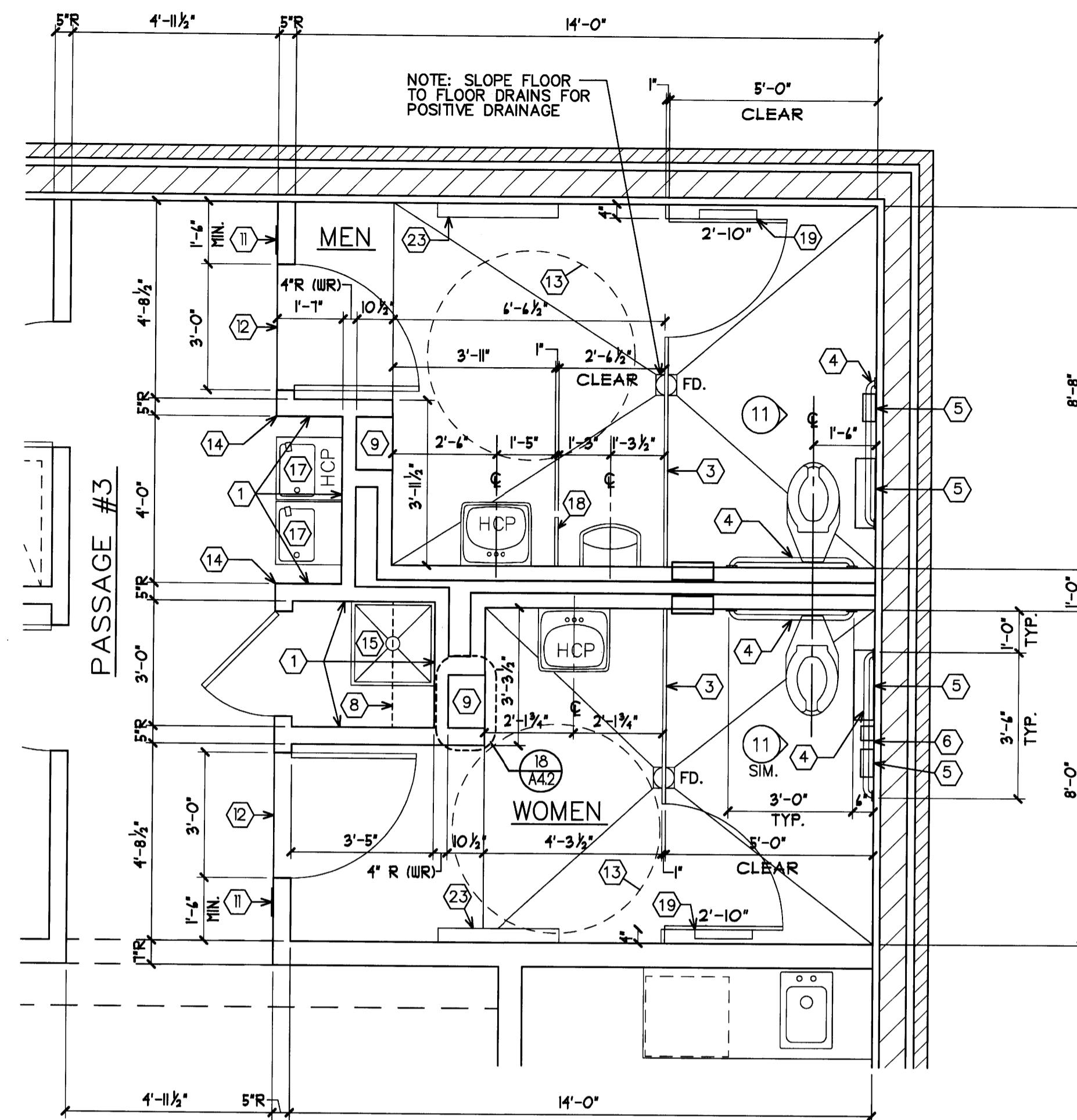
- KEYED NOTES**
- 1 N/A
 - 2 4" COMPACTED AGGREGATE BASE WITH FILLER.
 - 3 PAVEMENT.
 - 4 COMPRESSIBLE FILLER (3/4" MAXIMUM), CUT BACK AND PROVIDE SEALANT, TYPICAL AT ALL JOINTS.
 - 5 1/4" TOOLED JOINT
 - 6 4" X 4" x 10 W.U.F.

SIDEWALK DETAIL AT BUILDING

SCALE: N.T.S.

ACCESSIBLE RAMP DETAIL AT BUILDING

SCALE: N.T.S.

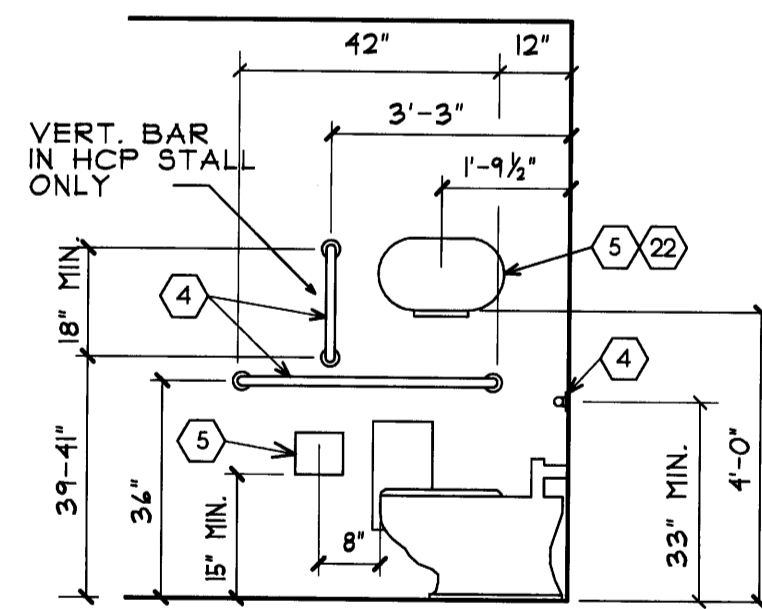


9 PLAN - TOILET ROOMS
SCALE: 3/8"=1'-0"

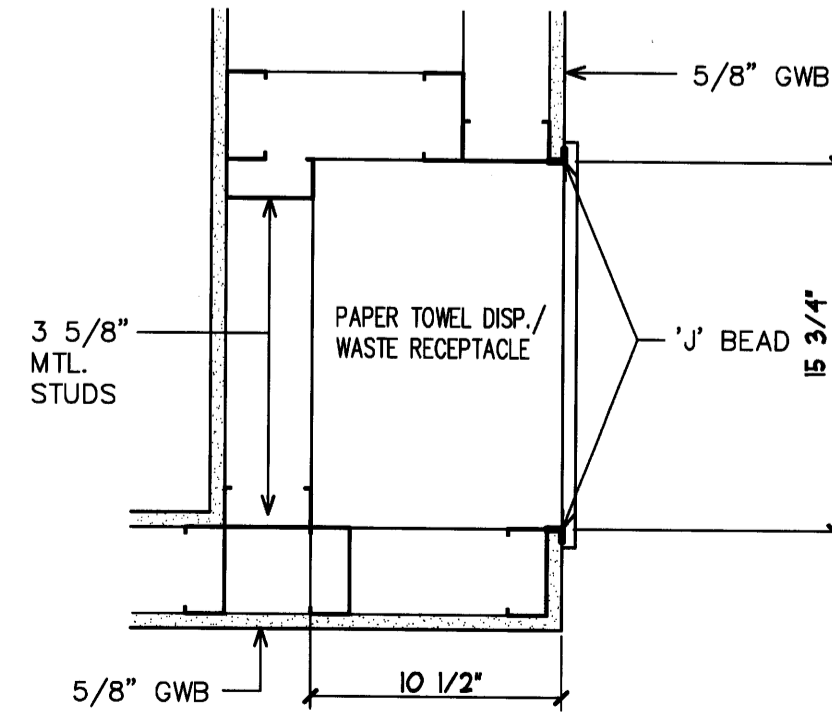
TOILET STALL DOOR NOTES:

1. PROVIDE PULL HANDLE 6" FROM HINGE SIDE OF DOOR ON THE COMPARTMENT SIDE OF DOOR AT 26" TO 36" A.F.F. (TYP. FOR HCP STALL).
2. PROVIDE PULL HANDLES ON BOTH SIDES OF DOOR AT THE LATCH SIDE (TYP. FOR HCP STALL).

12 TILE BASE DETAIL
NO SCALE



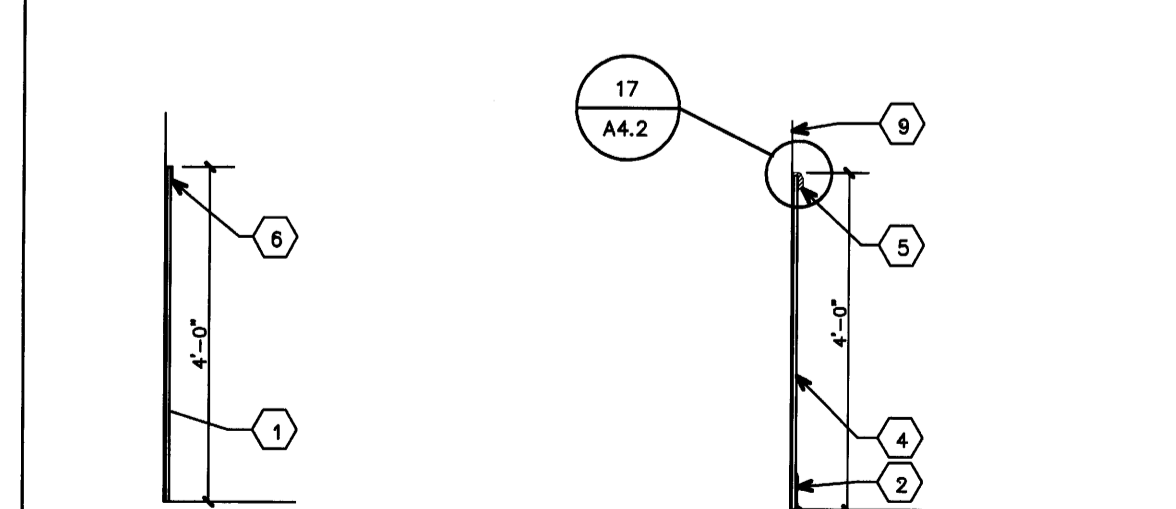
11 TYP. SIDE ELEV.
SCALE: 3/8"=1'-0"



18 DETAIL
SCALE: 1 1/2"=1'-0"

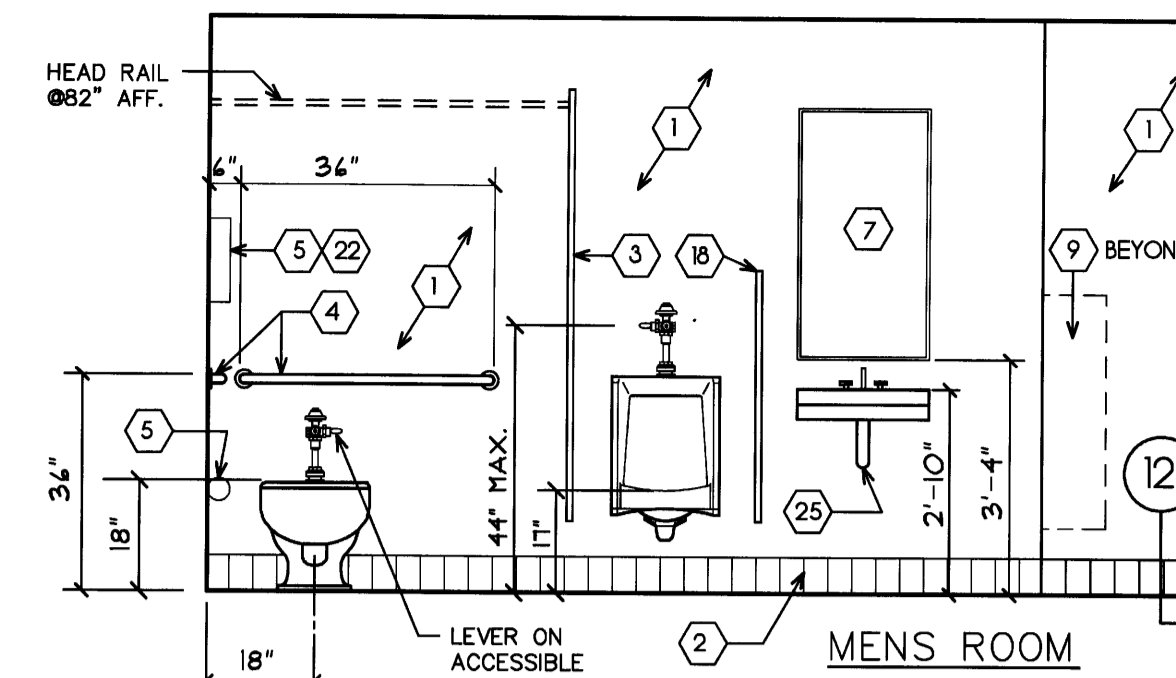
13 NOT USED

CORNER GUARD AND PROTECTED WALL DETAILS

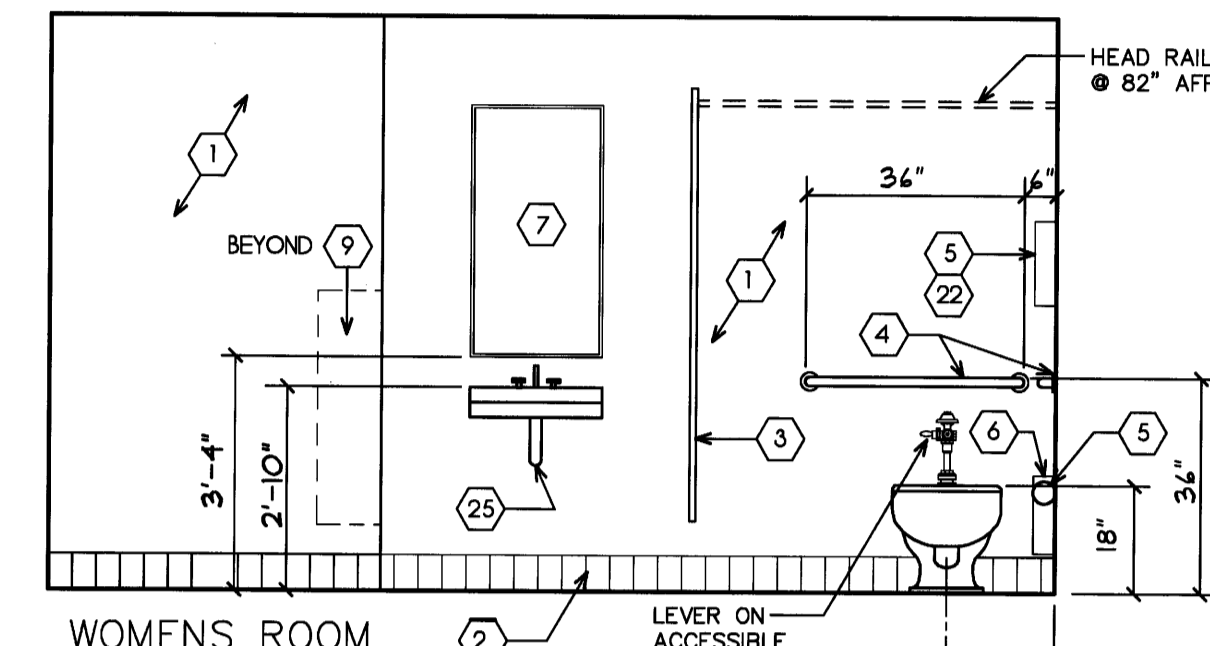


14 WALL SECTION
(AT PASSAGES W/ CART TRAFFIC)
N.T.S.

15 WALL SECTION
(AT EMPLOYEE ROOM)
N.T.S.



10 INTERIOR ELEVATIONS-MEN/WOMEN
SCALE: 3/8"=1'-0"



KEYED NOTES AND ACCESSORY DATA

- 1 FIBERGLASS POLYESTER PANELS.
- 2 CERAMIC TILE COVE BASE TO TOP OF TILE BASE. BUT INSTALL TO FLOOR TILE. DO NOT INSTALL ON TOP OF FLOOR TILE.
- 3 OVERHEAD BRACED TOILET STALL PARTITION.
- 4 GRAB BARS IN EACH TOILET ROOM. MOUNT 3'-0" A.F.F. 18" VERT. GRAB BAR AT 33" AFF.
- 5 TOILET TISSUE DISPENSER. FURNISHED AND INSTALLED BY WALGREENS.
- 6 FEMININE NAPKIN DISPOSAL. MOUNT TOP AT 2'-0" A.F.F.
- 7 MIRROR (AT EACH LAVATORY) MOUNT BOTTOM AT 3'-4" A.F.F.
- 8 12" DEEP PLASTIC COATED WIRE SHELVING AT 60" & 72" A.F.F.
- 9 RECESSED ROLL PAPER TOWEL DISPENSER AND WASTE RECEPTACLE ROUGH OPENING 15 1/4" X 39 1/2" X 10 1/4" DEEP TOP OF R.O. 50" AFF. DISPENSER BY BRADLEY ADA.
- 10 FLUSH LEVER TO BE IN OPEN SIDE OF STALL ADA.
- 11 ADA ACCESSIBLE TOILET RM. NAME PLATE ON WALL.
- 12 CERAMIC TILE BULLNOSE TRIM. SEE DETAIL - 9/A4.3
- 13 5'-0" DIAMETER WHEEL CHAIR SPACE ALLOWANCE.
- 14 CORNER GUARD. SEE DETAIL 16/A4.2
- 15 MOP BASIN.
- 16 SOUND ATTENUATION BLANKETS. FULL HEIGHT LENGTH AND DEPTH OF WALL.
- 17 ELECTRIC WATER COOLER.
- 18 URINAL SCREEN
- 19 SURFACE MOUNTED TOILET SEAT COVER DISPENSER. MOUNT UNIT AT 41.25" AFF TO MOUNTING HOLES MOUNT ON REAR DOOR OR SIDE WALL IF DOOR HAS HOOKS
- 20 SEALANT
- 21 CERAMIC TILE FLOOR
- 22 24" L X 12" H FIRE TREATED BLOCKING UNDER MR GWB FOR TISSUE DISPENSER (TYP.)
- 23 BABY CHANGING STATION. OPEN BED HEIGHT AT 33" A.F.F. FOLLOW MANUFACTURER'S STUD SPACING AND ANCHORING TO MEET OR EXCEED DESIGN LOAD CAPACITY.
- 24 SWING-UP GRAB BAR. BOBRICK #B-4998 LOCATE EQUAL DISTANCE FROM CENTERLINE OF WATER CLOSET AS SIDE WALL MOUNTED GRAB BAR. USE ANCHOR PLATE KIT: BOBRICK #A998-29 ALIGN TOP OF BAR WITH SIDE-WALL BAR.
- 25 PIPE PADDING

DRAWINGS/SPECIFICATIONS BY:

- WALGREENS
 - LANDLORD'S CONSULTANT
- ALL CONSTRUCTION WORK, UNLESS NOTED OTHERWISE, BY:
- WALGREENS' CONTRACTOR
 - LANDLORD'S CONTRACTOR (TURNKEY CONSTRUCTION)

STORE	BUILDING
NEW <input checked="" type="checkbox"/>	NEW <input checked="" type="checkbox"/>
REMODELING <input type="checkbox"/>	EXISTING <input type="checkbox"/>
RELOCATION <input type="checkbox"/>	NEW SHELL ONLY <input type="checkbox"/>
OTHERS <input type="checkbox"/>	

NO.	DATE	BY	DESCRIPTION	CONST

REVISIONS

CERTIFICATION AND SEAL

I HEREBY CERTIFY THAT THIS PLAN AND SPECIFICATION WAS PREPARED BY ME OR UNDER MY DIRECT SUPERVISION AND THAT I AM A DULY REGISTERED ARCHITECT OR ENGINEER UNDER THE LAWS OF THE STATE OF MAINE AS SIGNIFIED BY MY HAND AND SEAL.

FISCAL 2007 CRITERIA - STORE #12325

WALGREENS
616 FOREST AVENUE
PORTLAND, MAINE

DRAWING TITLE

STANDARD DETAILS AND SPECIFICATIONS

CADD PLOT: SCALE: AS NOTED DRAWING NO.

VOID PLOT: DRAWN BY: WAL

RELEASED TO CONSTRUCTION DATE: 12-10-08

REVIEWED BY: SAM

A4.2