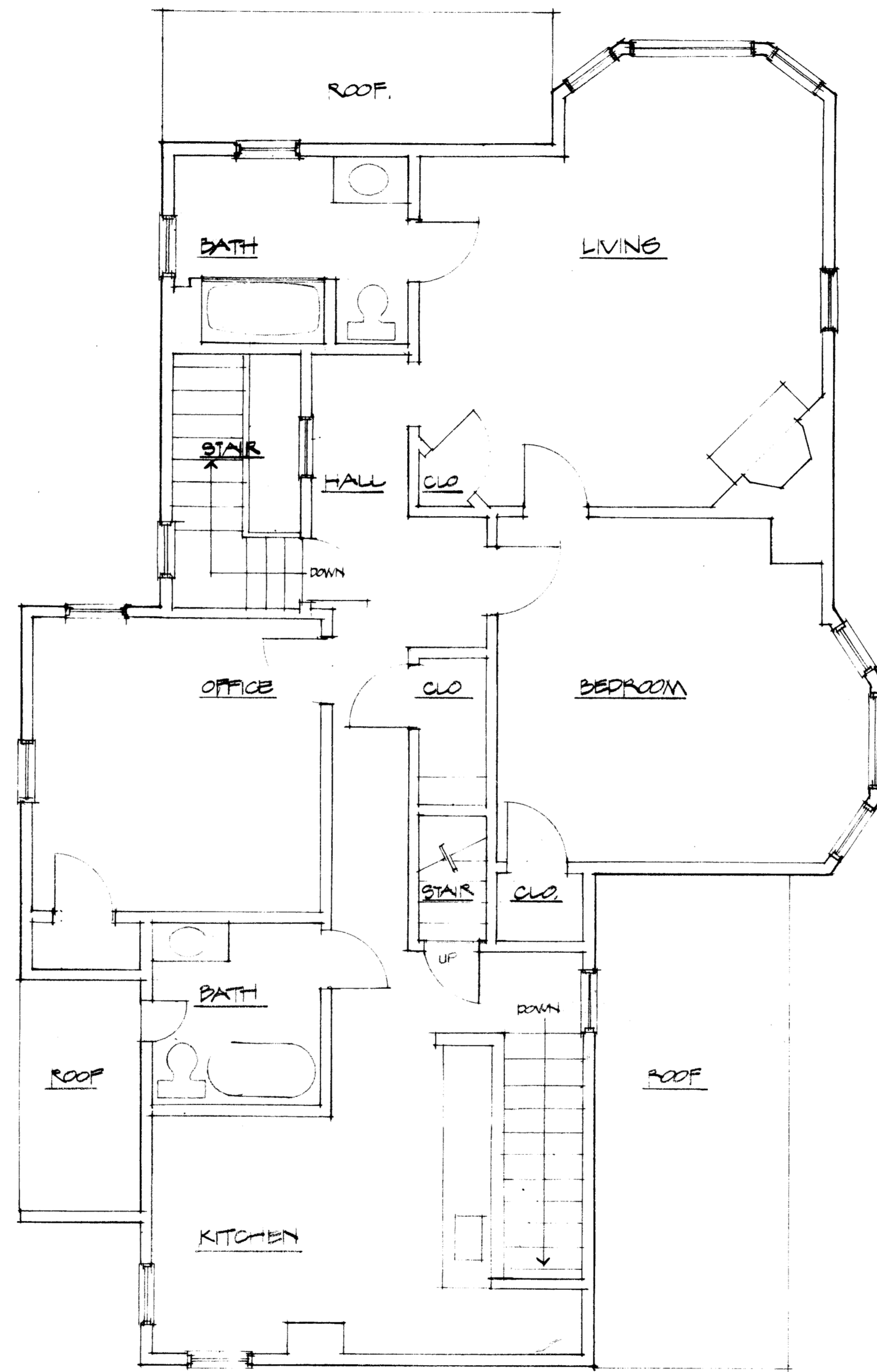


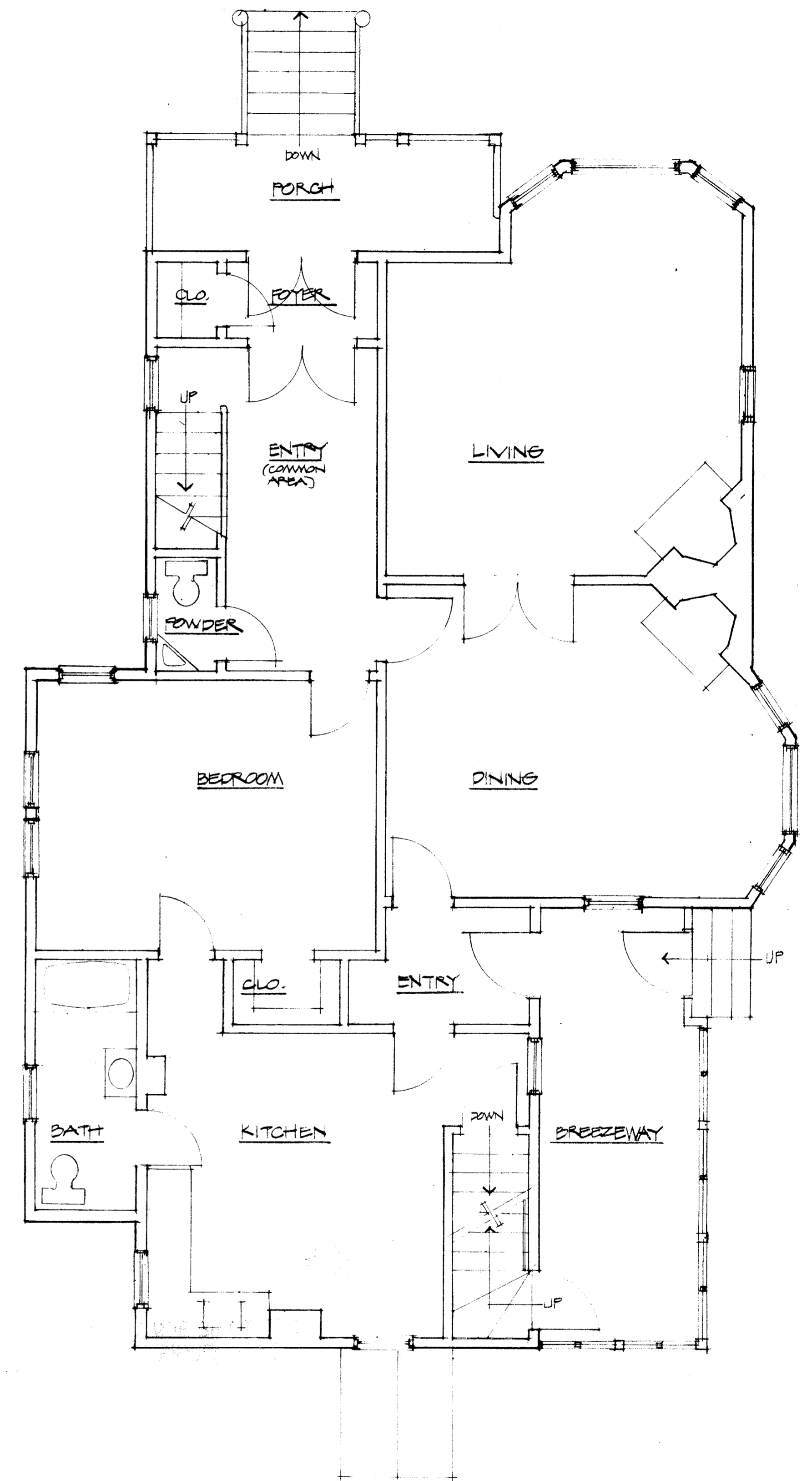
THIRD FLOOR PLAN (ATTIC)

UNIT B : USABLE SQUARE FOOTAGE 3RD FLR.: 669 SF



SECOND FLOOR PLAN

UNIT B : USABLE SQUARE FOOTAGE 2ND FLR.: 1358 SF
TOTAL USABLE SQUARE FOOTAGE: 2027

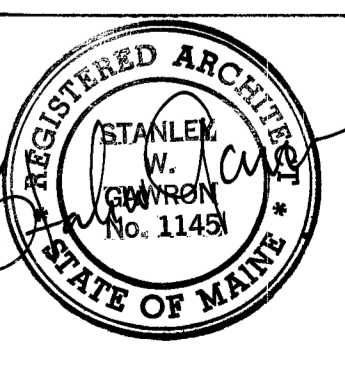


FIRST FLOOR PLAN

UNIT A : TOTAL USABLE SQUARE FOOTAGE: 1199 S.F.
COMMON AREA : 201 SF

TOTAL BUILDING USABLE SQUARE FOOTAGE: 3427 S.F.
UNIT A : 35 %
UNIT B : 59 %
COMMON AREA : 6 %

State of Maine, Cumberland ss.
Registry of Deeds
Received September 21, 1988
at 11:47 AM and recorded in
Plan Book 174 Page 4
Attest: Jerry Walsh
Register



NOTES:
THIS DOCUMENT IS SOLELY
FOR THE PURPOSE OF
ESTABLISHING FLOOR
AREAS AND BOUNDARIES.

489 DEERING AVENUE

JOB NO. 880
SCALE 1/4"=1'
DRAWN P.D.
CHECK

ISSUED 9-1-88

SHEET A