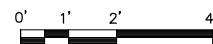


**FIRE SUPPRESSION PLAN**  
SCALE: 1/4"=1' FOR 11"x17"  
1/2"=1' FOR 22"x34"



**NOTES:**

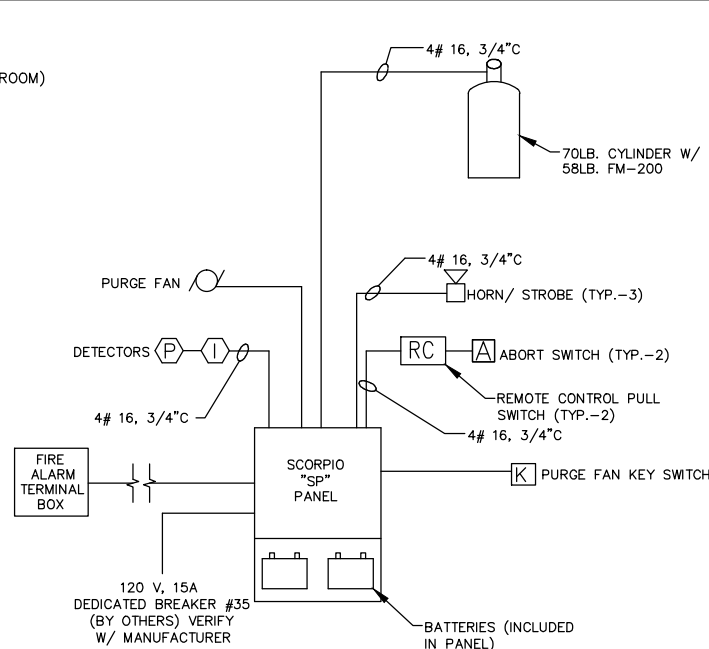
- OVERALL INTERIOR HEIGHT: 8'-5"± AT HIGHEST POINT. 8'-5" HEIGHT USED FOR ROOM VOLUME CALCULATION.
- ALL PROPOSED INTERIOR EQUIPMENT LOCATIONS TO BE FIELD VERIFIED PRIOR TO FM-200 SYSTEM INSTALLATION.
- A.F.F. - ABOVE FINISHED FLOOR.
- FENWALNET 6000 FIRE ALARM/SUPPRESSION CONTROL PANEL BY FENWAL FIRE PROTECTION SYSTEMS. CONTRACTOR TO CONTACT ADVANCED SAFETY SYSTEMS FOR ORDERING INFORMATION © (978) 532-5737.
- FIRE ALARM/SUPPRESSION SYSTEM TO BE TIED INTO MAIN SHELTER CIRCUIT BREAKER & INSTALLED PER MANUFACTURER'S RECOMMENDATIONS.
- HVAC DAMPERS TO CLOSE UPON ALARM SIGNAL. INSTALL DAMPERS PER MANUFACTURER RECOMMENDATIONS OR VOLUME OF CYLINDERS MUST BE INCREASED.
- ALL ITEMS SHOWN SCHEMATICALLY, CONTRACTOR TO FIELD VERIFY LOCATION OF EACH ITEM. SMOKE DETECTORS & NOZZLE DISCHARGE PATH SHOULD BE CLEAR OF OBSTRUCTIONS. LOCATION OF FIRE PANEL AND ABORT SWITCHES SHOULD ALLOW EQUIPMENT ROOM TO OPERATE PROPERLY.
- SIGN ON DOOR TO READ: "CAUTION SHELTER PROTECTED BY FM-200 FIRE ALARM/SUPPRESSION SYSTEM. DO NOT ENTER UNTIL VENTILATED". "CONTACT PORTLAND FIRE DEPARTMENT IN CASE OF EMERGENCY".
- EXHAUST FAN & INTAKE LOUVERS TO BE TIED INTO MAIN SHELTER CIRCUIT BREAKER PER MANUFACTURER'S RECOMMENDATIONS.
- REFER TO SHEET E-1 FOR BILL OF MATERIALS.

**FM - 200 CALCULATION**

HAZARD	DESIGN TEMP. OF	SQ. FT.	ROOM VOL.	% CONCENTRATION	FLOODING FACTOR	TOTAL REQUIRED	TOTAL PROVIDED	CONTAINER SIZE
SHELTER	70°	202	1695	7%	0.0341	58 LB.	58 LB.	70 LBS CYL.

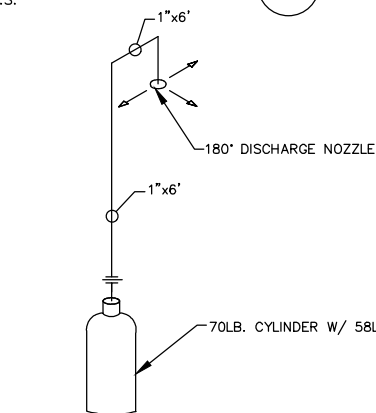
**FIRE ALARM CONNECTION**

- CONTRACTOR SHALL PROVIDE ALL NECESSARY MATERIAL AND LABOR TO TIE THE VERIZON WIRELESS EQUIPMENT INTO THE BUILDING EXISTING FIRE ALARM MONITORING SYSTEM AS REQUIRED BY LOCAL CODE AND THE MUNICIPALITY INCLUDING IF REQUIRED LED LIGHTS, HIGH TEMPERATURE SPRINKLER HEADS, AND ADDRESSABLE TIE-IN TO THE HOUSE PANEL.
- COORDINATE ALARM TIE-IN AND TESTING WITH THE BUILDINGS OWNER AND ALARM SYSTEM REPRESENTATIVE. THE BUILDING OWNER MAY ALSO REQUIRE THE CONTRACTOR TO USE THE EXISTING ALARM COMPANY FAMILIAR WITH THE SYSTEM.



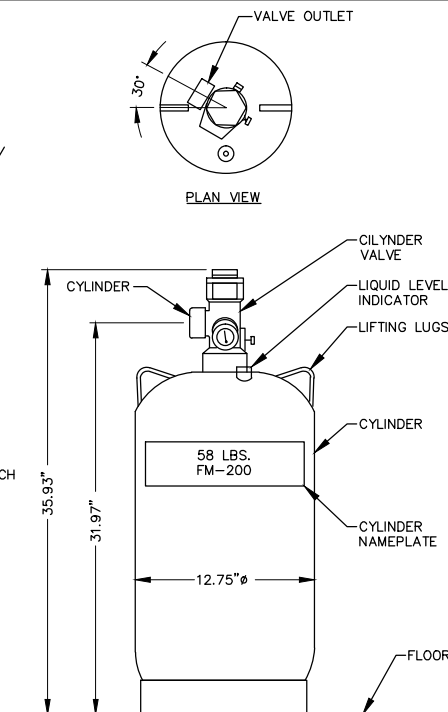
**TYPICAL CONTROL PANEL RISER DIAGRAM**

SCALE: N.T.S.



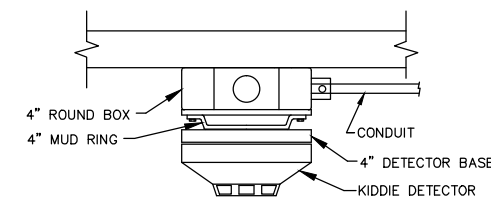
**ISOMETRIC PIPING DETAIL**

SCALE: N.T.S.



**MOUNTING DETAIL FOR 70 LB CONTAINER**

SCALE: N.T.S.

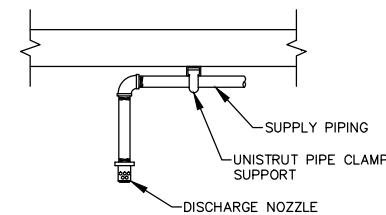


**4" DETECTOR & BASE DETAIL**

SCALE: N.T.S.

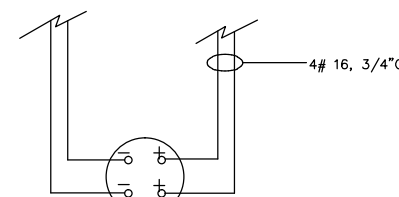
**LEGEND**

	- PHOTO ELECTRIC SMOKE DETECTOR
	- IONIZATION SMOKE DETECTOR
	- ABORT STATION - CONSTANT PRESSURE TYPE (MOUNTING HT. 4'-0" MAX.)
	- 70 LB. CYLINDER WITH 86 LB. FM 200
	- 90° NOZZLE
	- 180° NOZZLE
	- FM-200 CONTROL PANEL
	- ELECTRIC REMOTE CONTROL PULL STATION
	- STROBE/ HORN WITH MANUAL PULL STATION BELOW (MOUNTING HT. 7'-0" MAX.)
	- KEY SWITCH
	- WEATHERPROOF
	- BREAK GLASS EMERGENCY GENERATOR GAS SHUT DOWN UNIT



**NOZZLE MOUNT DETAIL**

SCALE: N.T.S.



**DETECTOR SCHEMATIC**

SCALE: N.T.S.



VERIZON WIRELESS  
400 FRIBERG PARKWAY  
WESTBOROUGH, MA 01581-3956

**PORTLAND 2 ME**

**CONSTRUCTION DRAWINGS**

0	05/02/13	FOR SUBMITTAL
A	04/18/13	FOR COMMENT



Dewberry Engineers Inc.  
280 SUMMER STREET  
10TH FLOOR  
BOSTON, MA 02210  
PHONE: 617.695.3400  
FAX: 617.695.3310

DRAWN BY: MR

REVIEWED BY: MFT

CHECKED BY: PPB

PROJECT NUMBER: 50002925

JOB NUMBER: 50055368

SITE ADDRESS

202 WOODFORD STREET  
PORTLAND, ME 04103

SHEET TITLE

FIRE SUPPRESSION PLAN

SHEET NUMBER

FS-1