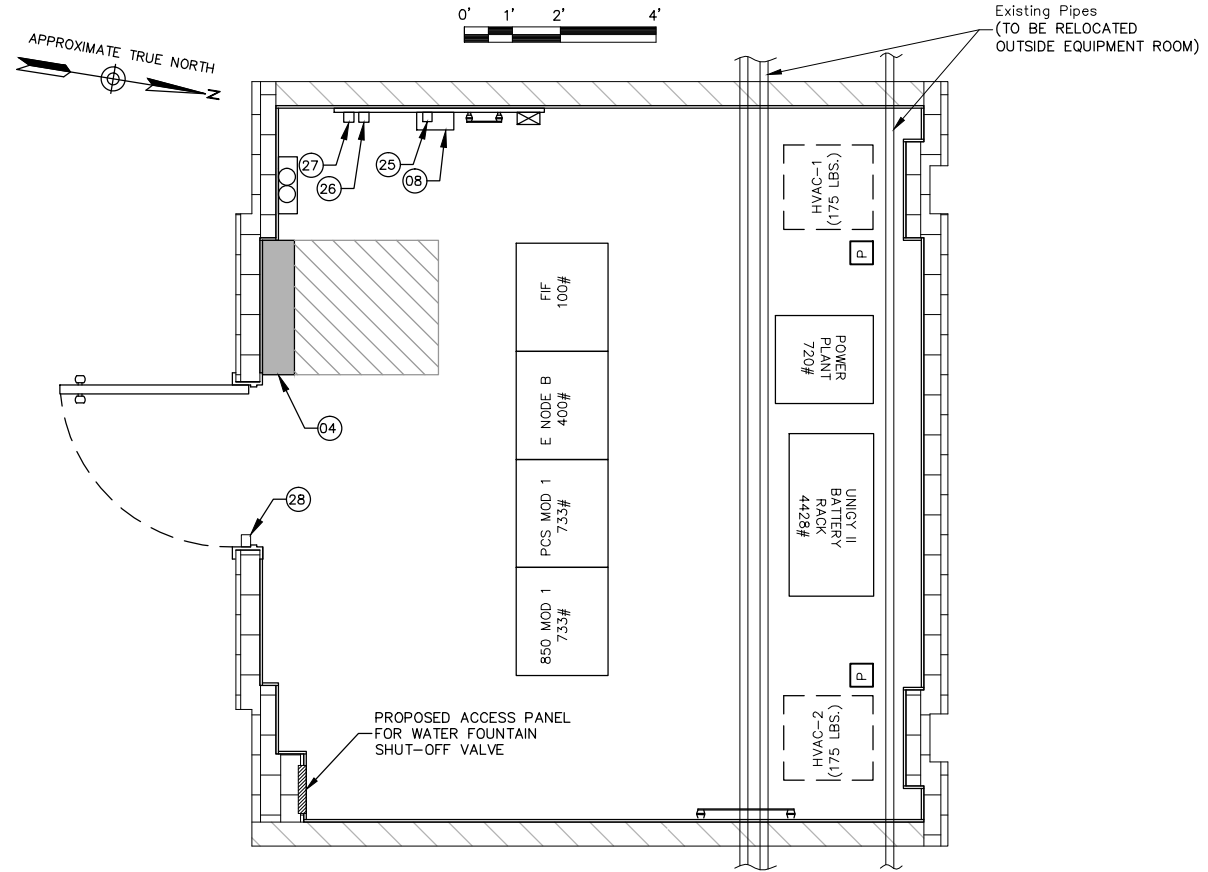


CABLE TRAY PLAN
 SCALE: 1/4"=1' FOR 11"x17"
 1/2"=1' FOR 22"x34"

NEMA 1 PANEL SCHEDULE - ILC 22,000 A.I.C.					
W/200A MAIN C/B					
CKT #	DESCRIPTION	AMP	AMP	DESCRIPTION	CKT #
1	RECTIFIER #1	30	30	RECTIFIER #2	2
3					4
5	RECTIFIER #3	30	30	RECTIFIER #4	6
7					8
9	RECTIFIER #5	30	30	RECTIFIER #6	10
11					12
13	RECTIFIER #7	30	30	RECTIFIER #8	14
15					16
17	AIR HANDLER UNIT #1	15	15	AIR HANDLER UNIT #2	18
19					20
21	RECEPTACLES - EQUIPMENT ROOM	20	20	LIGHTING-EQUIPMENT ROOM	22
23	CONDENSATE PUMP 1	20	20	CONDENSATE PUMP 2	24
25	EXHAUST FAN	20	20	EXHAUST FAN	26
27	TWIST LOCK RECEPTACLE-TELCO	15	20	HVAC CONTROLLER (LEAD LAG)	28
29	GFCI RECEPTACLE (AT CONDENSER)	20	30	GENERATOR PANEL	30
31	CONDENSING UNIT 1	50	50	CONDENSING UNIT 2	32
33					34
35	FIRE SUPPRESSION PANEL	15	15	SPARE	36
37	SPACE	-	-	SPACE	38
39	SPACE	-	-	SPACE	40
41	SPACE	-	-	SPACE	42



ALARM & SIGNAL PLAN
 SCALE: 1/4"=1' FOR 11"x17"
 1/2"=1' FOR 22"x34"

CABLE TRAY PARTS-BOM	
NEWTON INSTRUMENTS #A-2213, CEILING HANGER BRACKET	
NEWTON INSTRUMENT #3010-8, 3/8"x1 3/4" CAP SCREW	
NEWTON INSTRUMENT 5/8"-11 THREADED ROD	
NEWTON INSTRUMENT #3014-8, 5/8"-11 NUT	
NEWTON INSTRUMENT #3029-1, HANGER BRACKET	
NEWTON INSTRUMENT #3014-6, NUT	
NEWTON INSTRUMENT #A-1589, SPLICE CLAMP	
NEWTON INSTRUMENT #3017-2, BOLT	
NEWTON INSTRUMENT #3018-4, 5/8" EXPANSION SHIELD	
NEWTON INSTRUMENT #2003-23, 18-INCH CABLE TRAY	
NEWTON INSTRUMENT #A-1592, CORNER CLAMP	
NEWTON INSTRUMENT #3017-1, BOLT	
NEWTON INSTRUMENT #2085-8, 18" END CLOSING BAR	

Ⓢ :- REFER TO SHEET E-1 FOR BILL OF MATERIALS.
 # :- REFER TO THIS SHEET FOR POWER PANEL SCHEDULE.
 FOR RISER DIAGRAM SEE SHEET E-3.



VERIZON WIRELESS
 400 FRIBERG PARKWAY
 WESTBOROUGH, MA 01581-3956

PORTLAND 2 ME

CONSTRUCTION DRAWINGS

REV	DATE	DESCRIPTION
0	05/02/13	FOR SUBMITTAL
A	04/18/13	FOR COMMENT



Dewberry Engineers Inc.
 280 SUMMER STREET
 10TH FLOOR
 BOSTON, MA 02210
 PHONE: 617.695.3400
 FAX: 617.695.3310

DRAWN BY:	MR
REVIEWED BY:	MFT
CHECKED BY:	PPB
PROJECT NUMBER:	50002925
JOB NUMBER:	50055368
SITE ADDRESS	

202 WOODFORD STREET
 PORTLAND, ME 04103

SHEET TITLE

CABLE TRAY &
 ALARM SIGNAL PLANS

SHEET NUMBER

E-2