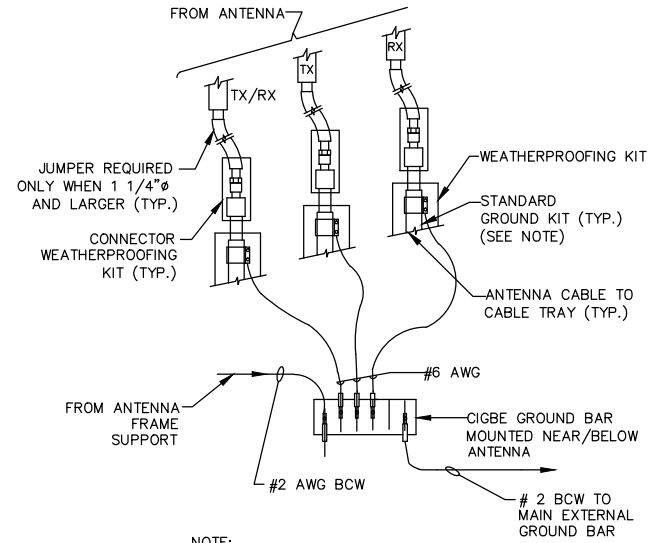


NOTE:

- DO NOT INSTALL CABLE GROUND KIT AT A BEND AND ALWAYS DIRECT GROUND WIRE DOWN TO GROUND BAR.

**CONNECTION OF CABLE GROUND KIT**

SCALE: N.T.S.

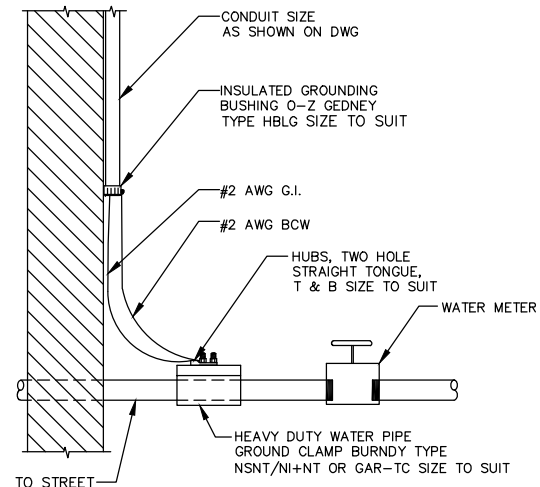


NOTE:

- DO NOT INSTALL CABLE GROUND KIT AT A BEND AND ALWAYS DIRECT GROUND WIRE DOWN TO CIGBE.

**CONNECTION OF GROUND WIRES TO GROUNDING BAR (CIGBE)**

SCALE: N.T.S.

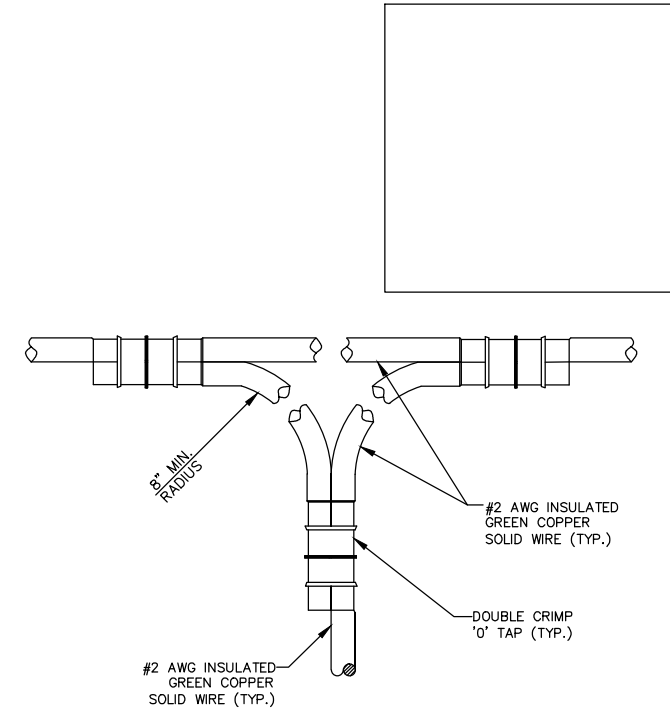


NOTE:

- BURNDY TYPE GROUND CLAMP SHOULD BE ATTACHED ON STREET SIDE OF WATER CUT-OFF. VALVE IS INSULATED BETWEEN WATER METER & STREET GROUNDING CLAMP SHOULD BE ATTACHED TO STREET SIDE.

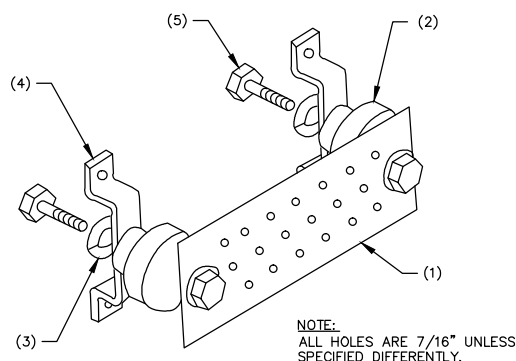
**WATER METER GROUNDING**

SCALE: N.T.S.



**CONNECTION TO GROUND HALO DETAIL**

SCALE: N.T.S.



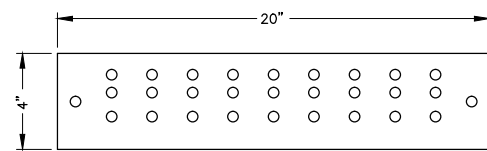
NOTE: ALL HOLES ARE 7/16 inch UNLESS SPECIFIED DIFFERENTLY.

LEGEND:

- COPPER GROUND BAR, 1/4"x4"x24". HOLE CENTERS TO MATCH NEMA DOUBLE LUG CONFIGURATION.
- STANDOFF INSULATORS, HARGER LIGHTNING PROTECTION, INC. CAT. NO. 5263-AB.
- 1/2" LOCKWASHERS, HARGER CO. CAT. NO. LWBS.
- WALL MOUNTING STAINLESS STEEL, MOUNTING BRACKET, HARGER CAT. NO. WBKT-1.
- 1/2-13 x 1" HEX HEAD CAP SCREW, HARGER, CAT. NO. CS88S.

**GROUND BAR DETAIL**

SCALE: N.T.S.



ELEVATION

"J"  
THE GROUND BAR IS 1/4" THICK, 4" WIDE, 20" LONG. IT HAS A HOLE PATTERN "J" WITH A NO. 2 AWG SOLID TINNED TAIL.

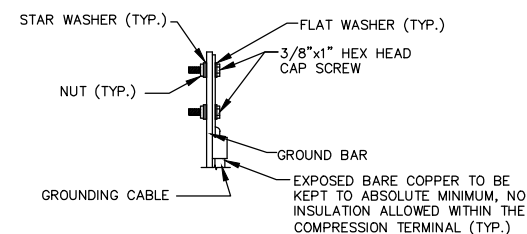
GBIT 14420 J 2-7  
↓ ↓ ↓ ↓ ↓  
STYLE SIZE HOLE PATTERN TAIL

STYLE: GBIT - GROUND BAR WITH WALL MOUNTING BRACKETS, INSULATORS AND A 25' EXOTHERMICALLY WELDED TAIL.

SIZE: THICKNESS, WIDTH, LENGTH IN INCHES.

HOLE PATTERN: HOLE PATTERN CENTERS MATCH NEMA DOUBLE LUG CONFIGURATION. SEE ISOMETRIC.

TAIL: SPECIFY AMERICAN WIRE GAUGE (AWG) SIZE AND STRANDING REQUIRED. 25' LENGTH IS STANDARD UNLESS OTHERWISE REQUESTED.



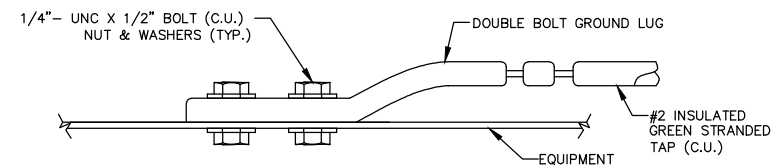
SECTION 'A-A'

NOTES:

- DOUBLING UP OR STACKING OF CONNECTIONS IS NOT PERMITTED
- OXIDE INHIBITING COMPOUND TO BE USED AT ALL LOCATIONS.

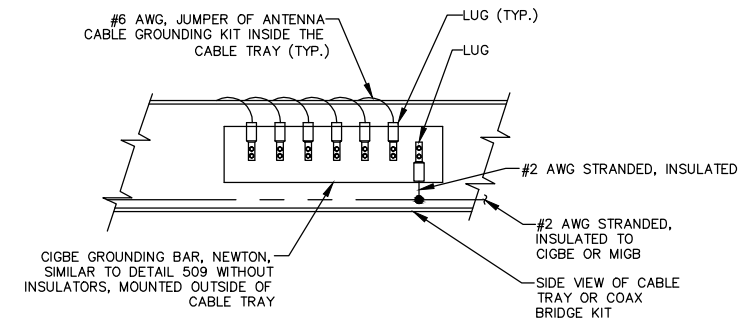
**TYPICAL GROUND BAR MECHANICAL CONNECTION DETAIL**

SCALE: N.T.S.



**CONNECTION TO EQUIPMENT DETAIL**

SCALE: N.T.S.



**GROUND BAR MOUNTED ON CABLE TRAY**

SCALE: N.T.S.



VERIZON WIRELESS  
400 FRIBERG PARKWAY  
WESTBOROUGH, MA 01581-3956

**PORTLAND 2 ME**

**CONSTRUCTION DRAWINGS**

0	05/02/13	FOR SUBMITTAL
A	04/18/13	FOR COMMENT



Dewberry Engineers Inc.  
280 SUMMER STREET  
10TH FLOOR  
BOSTON, MA 02210  
PHONE: 617.695.3400  
FAX: 617.695.3310

DRAWN BY: MR

REVIEWED BY: MFT

CHECKED BY: PPB

PROJECT NUMBER: 50002925

JOB NUMBER: 50055368

SITE ADDRESS

202 WOODFORD STREET  
PORTLAND, ME 04103

SHEET TITLE

GROUNDING DETAILS

SHEET NUMBER