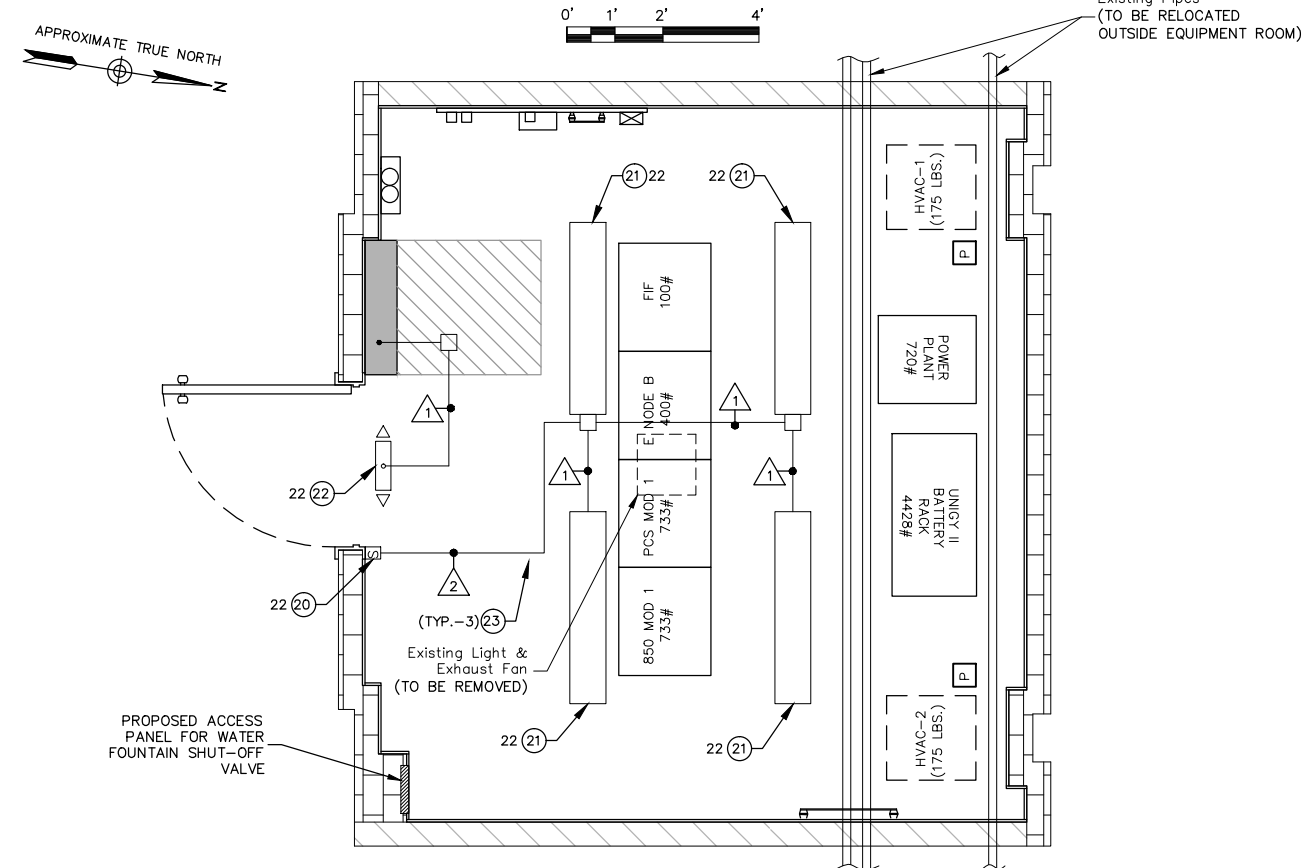


POWER PLAN
SCALE: 1/4"=1' FOR 11"x17"
1/2"=1' FOR 22"x34"



LIGHTING PLAN
SCALE: 1/4"=1' FOR 11"x17"
1/2"=1' FOR 22"x34"

BILL OF MATERIALS	
01	AIR HANDLER-1, 5 TON, CARRIER, P/N FK4DNB006 (SEE PAGE M-1)
02	AIR HANDLER-2, 5 TON, CARRIER, P/N FK4DNB006 (SEE PAGE M-1)
03	CONTROLLER, LEADLAG (SEE DETAIL 3/E-3)
04	VERIZON ILC COMBINATION PANELBOARD, 200A, 120/240V, 1Ø TRANSFER SWITCH, SURGE PROTECTOR
05	DISCONNECT SWITCH 100AMP, 480V — NOT USED
06	50KVA 480 TO 120/240V TRANSFORMER — NOT USED
07	MICROFLECT COAX ENTRY, 24 PORT, PN B1340 — NOT USED
08	TELCO ALARM BOX 16"x12"x16" NEMA 1
09	3'X7' DOOR, FRAME, AND HARDWARE (SEE CONSTRUCTION NOTE 3 ON G-1)
10	LOCKSET WITH REMOVABLE CORE (COORDINATE WITH VERIZON CM)
11	TELCO BOARD, 3/4"x4'-0"x8'-0" AC PAINTED WHITE
12	MASTER GROUND BAR 1/4"x4"x24" TINNED (6'-0" A.R.L.)
13	EXTERIOR CABLE ENTRY GROUND BAR, 4"x24"x1/4"
14	TELCO GROUND BAR, 2"x14"x1/4"
15	QUAD RECEPTACLES, 20 AMP — TWO(2) HUBBELL P/N 5362W W/ P82W PLATE
16	RECEPTACLE, 20A, 120V, TWISTLOCK — HUBBELL P/N 2310 W/ P720W PLATE
17	SQUARE D HU361RB, 60A, NEMA 3R NON-FUSED SAFETY SWITCH — NOT USED
18	HUBBELL #6FR5362WA, 20A, 120V GFCI RECEPTACLE (PLATE INCLUDED) IN NEMA 3R ENCLOSURE
19	GALVANIZED 4"x4" WIREWAY TERMINATED WITH (5) 10' LONG, 3/4" LFMC DROPS WITH 45° CONNECTORS
20	INTERIOR LIGHT SWITCH, 20 AMP HUBBELL P/N 1221 W/ P/N P1N WALL PLATE
21	INTERIOR LIGHT FIXTURES, 4' FLUORESCENT,W/BULB T8 ELECTRONIC BALLAST LITHONIA P/N LB 2 32 120 GEB
22	EMERGENCY LIGHT/EXIT SIGN, LITHONIA QUANTUM PN H2MSWG120SSB
23	4"x4" JUNCTION BOX
24	SMOKE DETECTOR GENTEX P/N 7100 HF — NOT USED
25	ALARM BLOCK, 66 TERMINAL
26	HIGH TEMPERATURE ALARM, DAYTON 2E206
27	LOW TEMPERATURE ALARM, DAYTON 2E206
28	MAGNETIC DOOR ALARM CONTACTS
29	CONDENSATE PUMP, McMASTER CARR P/N 99575K41-120V, SINGLE PHASE (SEE SHEET M-1)
30	FM 200 SYSTEM SMOKE DETECTOR — IONIZATION 120V/12V WITH RELAY *
31	FM 200 SYSTEM SMOKE DETECTOR — PHOTOELECTRIC WITH RELAY 120V/12V *
32	GAS EVACUATION DAMPER
33	Ø"x12" AIR DUCT — NOT USED
34	FM 200 SYSTEM CEILING/WALL MOUNT FIRE STROBE/ HORN *
35	FM 200 SYSTEM FIRE DEPARTMENT LOCKABLE SWITCH *
36	FM 200 SYSTEM FIRE ALARM/SUPPRESSION CONTROL PANEL *
37	FM 200 SYSTEM ELECTRIC REMOTE CONTROL (PULL STATION) *
38	450 CFM, 1/4 HP, 120/1/60 PURGE FAN *
39	FM 200 SYSTEM ABORT SWITCH SWITCH — CONSTANT PRESSURE TYPE *
40	FM 200 SYSTEM 70# FM 200 CYLINDER *
41	FM 200 SYSTEM 180' DISCHARGE NOZZLE *
42	70 WATT HPS LIGHT WITH PHOTO CELL — CRESCENT STONCO P/N TLW-70-NLX-L-PC-1 NOT USED
43	EYE WASH STATION, DUAL 32 OZ BOTTLE
44	GENERATOR EMERGENCY SHUT-DOWN SWITCH (ONE AT GENERATOR, ONE IN SHELTER) — NOT USED

SEE FS-1

* ALL FM 200 FIRE SUPPRESSION SYSTEM EQUIPMENT TO INTERFACE WITH THE FENWALNET 6000 BY FENWAL PROTECTION SYSTEMS (OR APPROVED EQUAL). CONTRACTOR TO VERIFY ALL PART NUMBERS PRIOR TO PURCHASE.

①:—REFER TO THIS SHEET FOR BILL OF MATERIALS.
:—REFER TO E-2 SHEET FOR POWER PANEL SCHEDULE.
FOR RISER DIAGRAM SEE SHEET E-3.

WIRE & CONDUIT SPECIFICATIONS	
①	2#12 & 1#12G IN 3/4" C (EMT)



VERIZON WIRELESS
400 FRIBERG PARKWAY
WESTBOROUGH, MA 01581-3956

PORTLAND 2 ME

CONSTRUCTION DRAWINGS

REV	DATE	DESCRIPTION
0	05/02/13	FOR SUBMITTAL
A	04/18/13	FOR COMMENT



Dewberry Engineers Inc.
280 SUMMER STREET
10TH FLOOR
BOSTON, MA 02210
PHONE: 617.695.3400
FAX: 617.695.3310

DRAWN BY: MR

REVIEWED BY: MFT

CHECKED BY: PPB

PROJECT NUMBER: 50002925

JOB NUMBER: 50055368

SITE ADDRESS

202 WOODFORD STREET
PORTLAND, ME 04103

SHEET TITLE

POWER &
LIGHTING PLANS

SHEET NUMBER

E-1