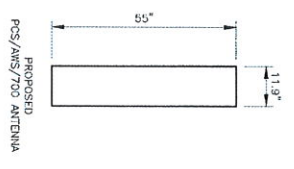
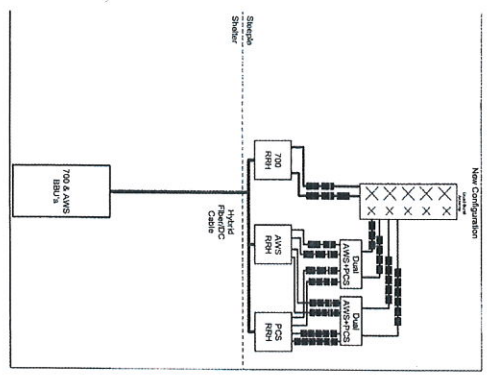


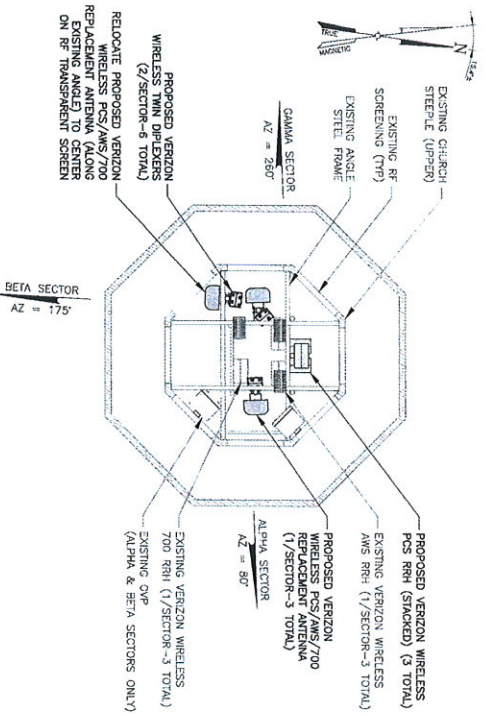
1 ANTENNA MOUNTING SECTION
C-2 SCALE: NTS



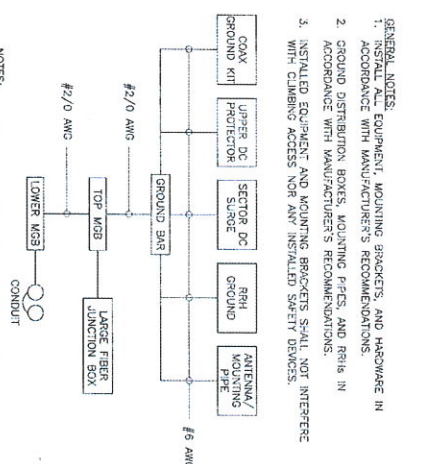
2 ANTENNA SECTOR VIEW
C-2 SCALE: NTS



VIEW FROM BEHIND ANTENNA ARRAY
3 ANTENNA SYSTEM LAYOUT
C-2 SCALE: NTS



4 ANTENNA ORIENTATION PLAN
C-2 SCALE: 1" = 5'



5 GROUNDING SCHEMATIC DIAGRAM
C-2 SCALE: NTS

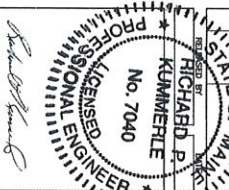
GENERAL NOTES:
1. EQUIPMENT, MOUNTING BRACKETS, AND HARDWARE IN ACCORDANCE WITH MANUFACTURER'S RECOMMENDATIONS.
2. GROUND DISTRIBUTION, BONES, MOUNTING PIPES, AND RAIS IN ACCORDANCE WITH MANUFACTURER'S RECOMMENDATIONS.
3. INSTALLED EQUIPMENT AND MOUNTING BRACKETS SHALL NOT INTERFERE WITH CLIMBING ACCESS NOR ANY INSTALLED SAFETY DEVICES.

NOTES:
1. BOND ANTENNA GROUNDING KIT CABLE TO TOP CHIEF.
2. BOND ANTENNA GROUNDING KIT CABLE TO BOTTOM CHIEF.
3. TYPICAL FOR ALL SECTORS.



TECTONIC
Professional Solutions, Exceptional Service
10000 1st Avenue, Suite 200, Portland, ME 04103
www.tectonicengineering.com

WORK ORDER NUMBER	ISSUE	ISSUE	ISSUE
7753-2	ISSUE	ISSUE	ISSUE
NO. DATE	NO. DATE	NO. DATE	NO. DATE
0 1/17/15	FOR COMMENT		



PORTLAND 2 ME
LC: 253438

SITE ADDRESS
202 WOODFORD ST
CITY OF PORTLAND
CUMBERLAND COUNTY
ME 04103

SHEET TITLE
ANTENNA DETAILS,
ANTENNA ORIENTATION
PLAN & DIAGRAMS

C-2