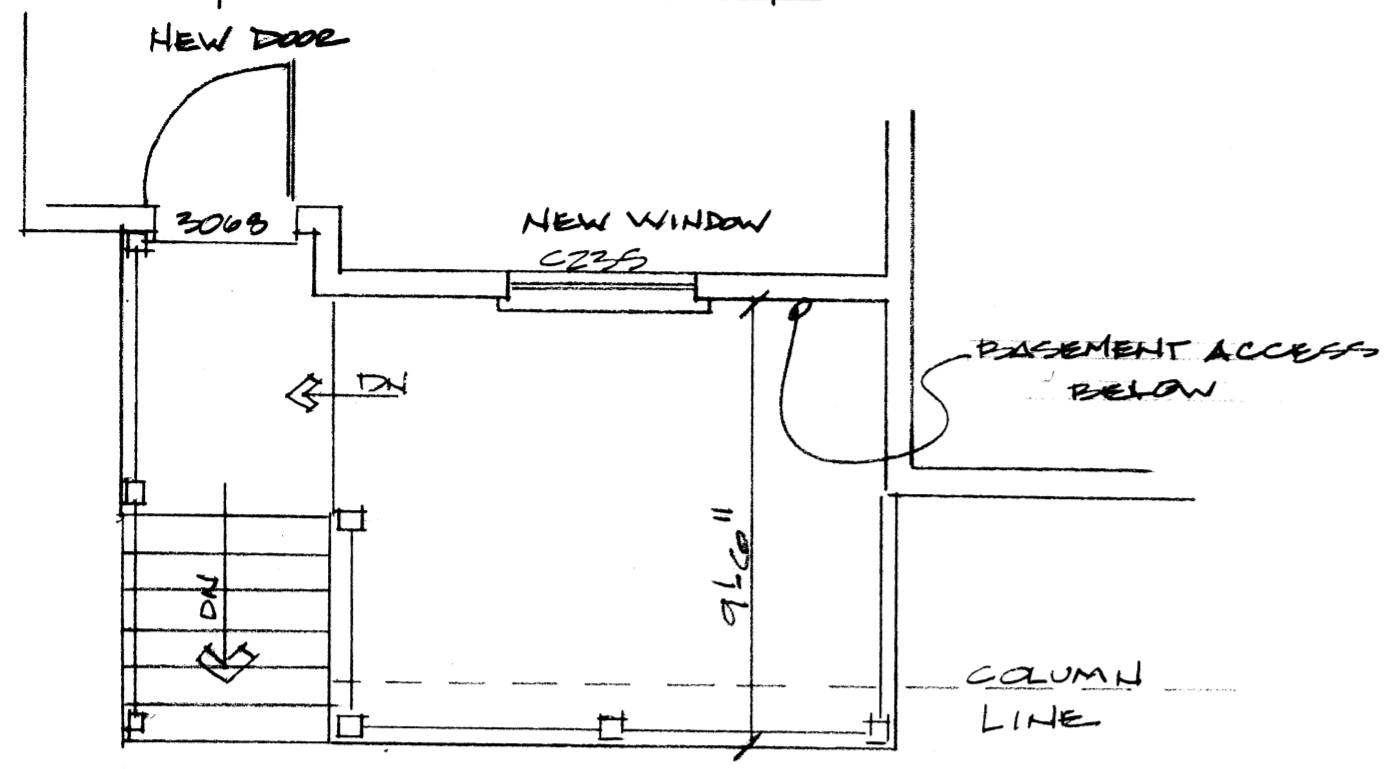
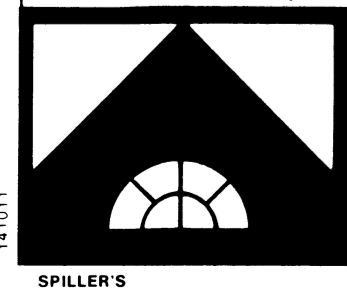
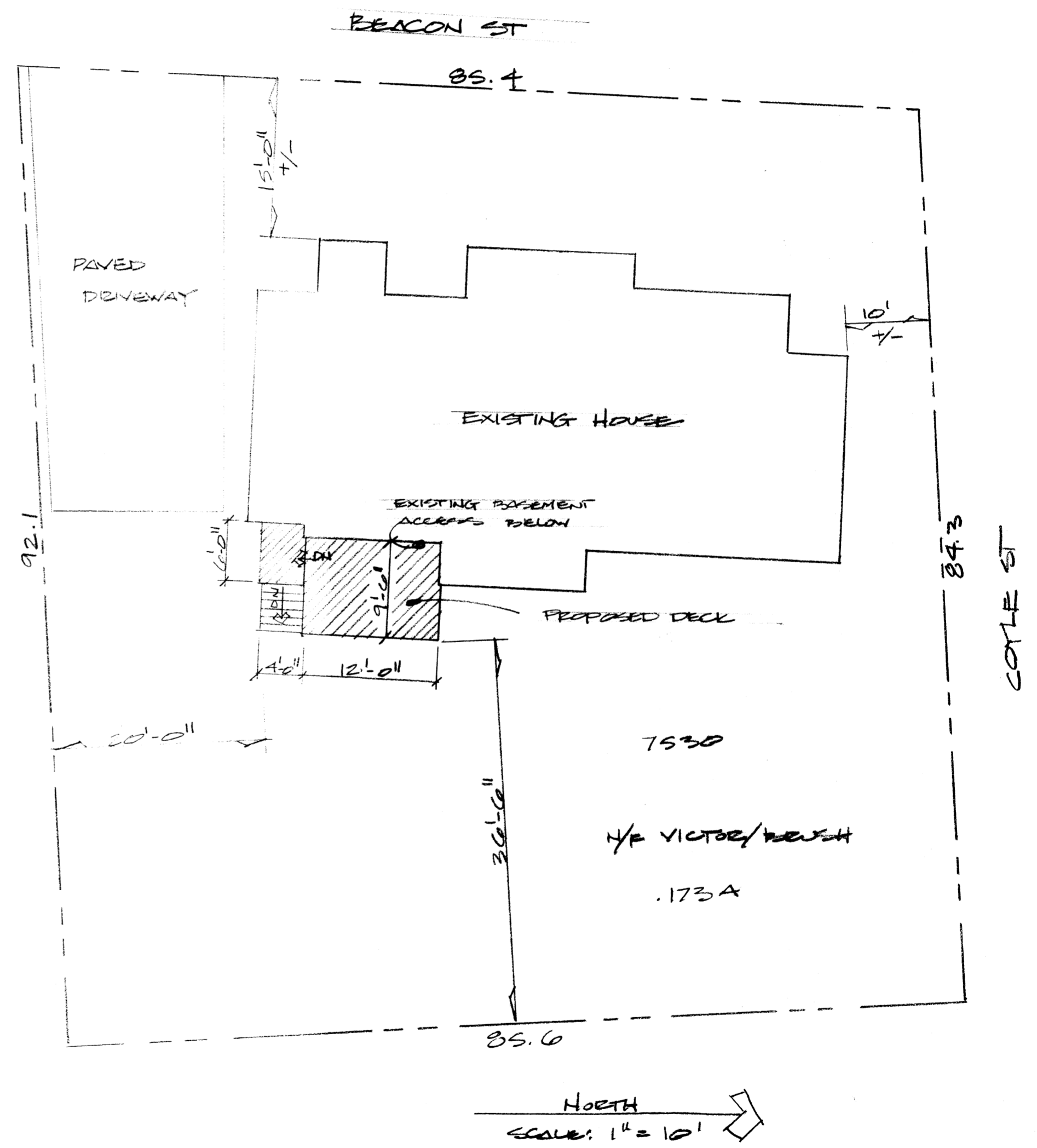
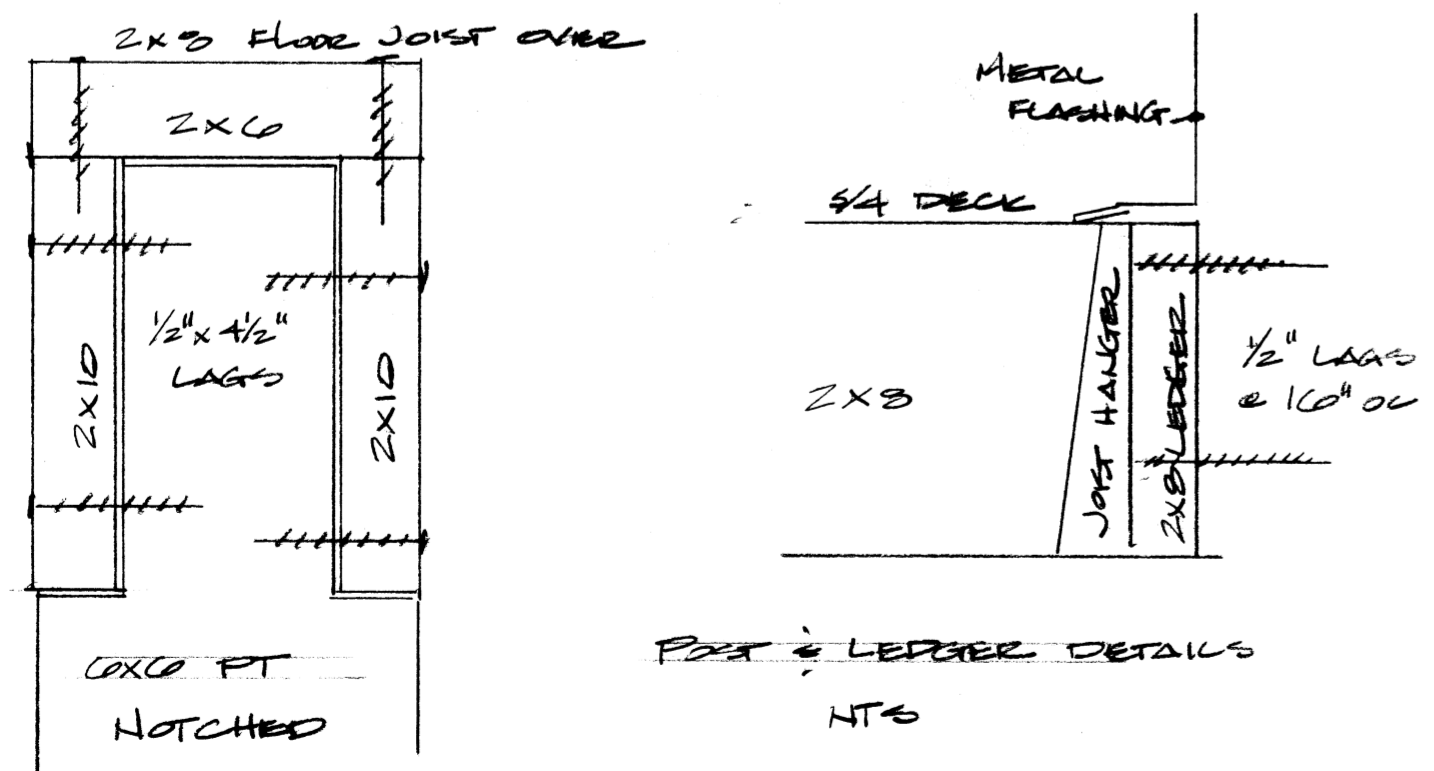
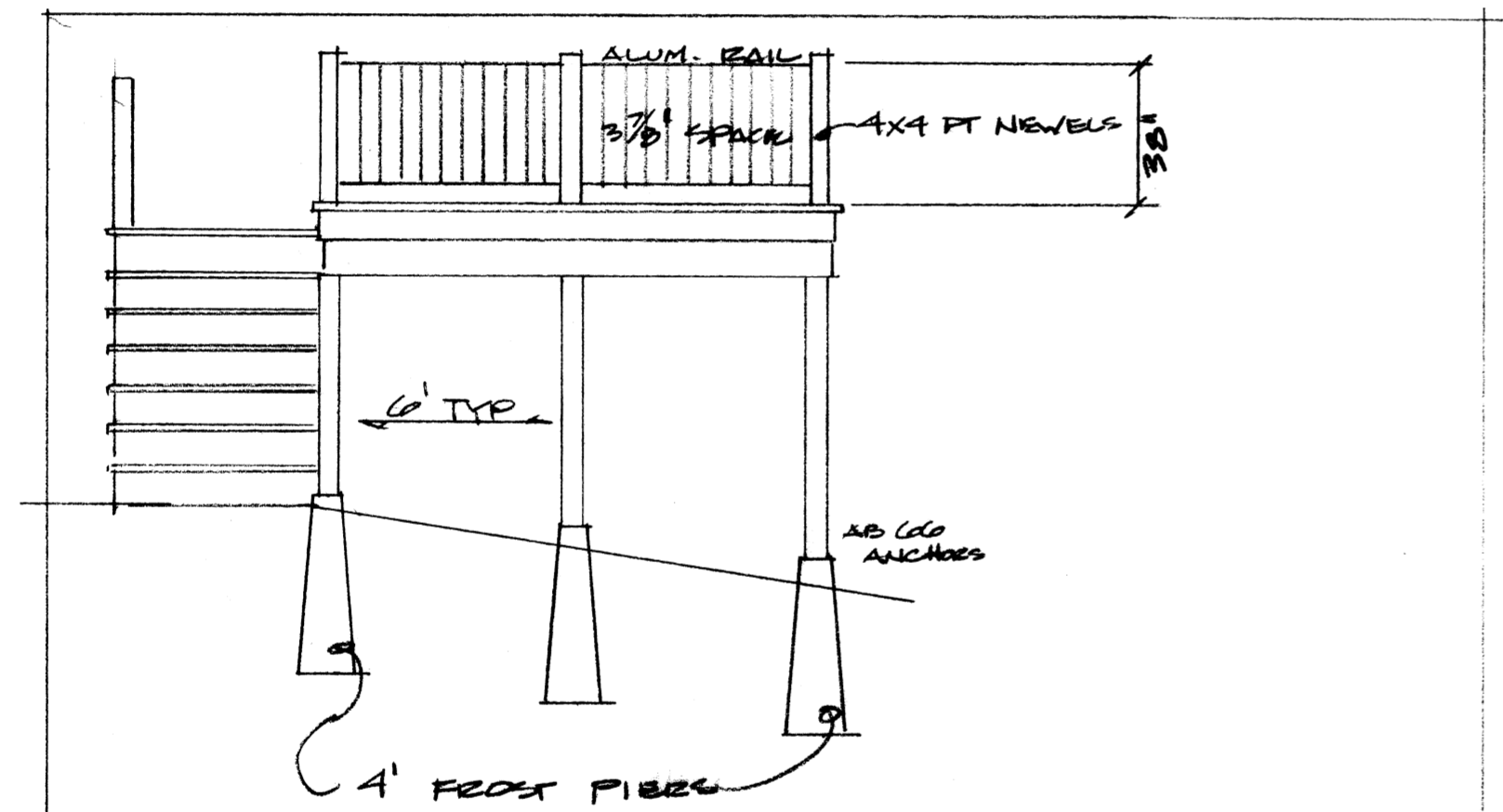


STAIR CONSTRUCTION
 4 - 2X12 STRINGERS
 RISE 7 3/4 RUN 11"
 CLOSED RISERS
 30" HANDRAILS



GRADE FALLS AWAY
 PLAN VIEW
 CO: 1/4" = 1'-0"



PROJECT
 PROPOSED DECK FOR
 VICTOR/BEUSH
 224 COYLE ST

SCALE
 AS NOTED
 DATE
 1/25/12
 JOB NUMBER

REVISION
 2/10/12
 APPROVED
 DRAWN BY
 DJ

TITLE
 DECK PLAN, ELEVATION, DETAILS
 SHEET NUMBER
 1 of 1

