

**SUBMITTAL DATA: MXZ-8C48NAHZ**  
**4-TON MULTI-INDOOR INVERTER HEAT-PUMP SYSTEM**

Job Name:

System Reference:

Date:

**GENERAL FEATURES**

- Quiet operation
- Built-in base pan heater to prevent ice in drain pan
- Limited warranty: five years parts and seven years compressors

**ACCESSORIES**

- Three-port Branch Box (PAC-MKA30BC)
- Five-port Branch Box (PAC-MKA50BC)
- Distribution Pipe for Flare Connection (MSDD-50AR; necessary for installing two branch boxes)
- Distribution Pipe for Brazed Connection (MSDD-50BR; necessary for installing two branch boxes)
- 3/8" x 1/2" Port Adapter (MAC-A454JP)
- 1/2" x 3/8" Port Adapter (MAC-A455JP)
- 1/2" x 5/8" Port Adapter (MAC-A456JP)
- 1/4" x 3/8" Port Adapter (PAC-493PI)
- 3/8" x 5/8" Port Adapter (PAC-SG76RJ)
- Drain Socket (PAC-SH71DS-E)
- Airflow Guide (PAC-SH96SG-E)



Outdoor Unit: MXZ-8C48NAHZ




(For data on specific indoor units, see the MXZ-C Technical and Service Manual.)

Specifications			Model Name
Unit Type			MXZ-8C48NAHZ
Cooling* (Non-ducted / Ducted)	Rated Capacity	Btu/h	48,000 / 48,000
	Capacity Range	Btu/h	6,000 - 48,000
	Rated Total Input	W	4,000 / 5,050
Heating at 47°F* (Non-ducted / Ducted)	Rated Capacity	Btu/h	54,000 / 54,000
	Capacity Range	Btu/h	7,200 - 54,000
	Rated Total Input	W	4,220 / 4,990
Heating at 17°F* (Non-ducted/Ducted)	Rated Capacity	Btu/h	40,000 / 43,000
	Maximum Capacity	Btu/h	54,000 / 54,000
	Rated Total Input	W	4,340 / 5,250
Heating at 5°F*	Maximum Capacity	Btu/h	54,000
Electrical Requirements	Power Supply	Voltage, Phase, Hertz	208 / 230V, 1-Phase, 60 Hz
	Recommended Fuse/Breaker Size	A	50
	MCA	A	42
Voltage	Indoor - Outdoor S1-S2	V	AC 208 / 230
	Indoor - Outdoor S2-S3	V	DC ±24
Compressor			Hermetic
Fan Motor (ECM)		F.L.A.	0.4+0.4
Sound Pressure Level	Cooling		51
	Heating		54
External Dimensions (H x W x D)		In / mm	52-11/16 x 41-11/32 x 13+1 1338 x 1050 x 330+25
Net Weight		Lbs / kg	276 / 125
External Finish			Munsell No. 3Y 7.8/11
Refrigerant Pipe Size O.D. — Eight Ports	Liquid (High Pressure)	In / mm	3/8 / 9.52
	Gas (Low Pressure)		5/8 / 15.88
Max. Refrigerant Line Length		Ft / m	492 (150)
Max. Piping Length for Each Indoor Unit		Ft / m	262 (80)
Max. Refrigerant Pipe Height Difference	If IDU is Above ODU	Ft / m	131 (40)
	If IDU is Below ODU		164 (50)
Connection Method			Flared/Flared
Refrigerant			R410A

\* Rating Conditions per AHRI Standard:

 Cooling | Indoor: 80° F (27° C) DB / 67° F (19° C) WB  
 Cooling | Outdoor: 95° F (35° C) DB / 75° F (24° C) WB

 Heating at 47° F | Indoor: 70° F (21° C) DB  
 Heating at 47° F | Outdoor: 47° F (8° C) DB / 43° F (6° C) WB

 Heating at 17° F | Indoor: 70° F (21° C) DB  
 Heating at 17° F | Outdoor: 17° F (-8° C) DB / 15° F (-9° C) WB

# SPECIFICATIONS: MXZ-8C48NAHZ, contd.

**Operating Range:**

Outdoor	
Cooling	D.B. 23 to 115° F [ D.B. -5 to 46° C]*1
Heating	D.B. -13 to 70° F [D.B. -25 to 21° C ]

\*1. D.B. 5 to 115° F [ D.B. -15 to 46° C ],  
when an optional Air Outlet Guide is installed.

**Energy Efficiencies:**

Indoor Unit Type	SEER	EER	HSPF	COP @ 47°F	COP @ 17°F
<b>Non-ducted</b>	18.9	12.0	11.0	3.75	2.70
<b>Ducted and Non-ducted</b>	16.80	10.75	10.50	3.46	2.55
<b>Ducted</b>	14.7	9.5	10.0	3.17	2.40

**Multi-zone Indoor/Outdoor Combination Table**

	MSZ-FH*	MSZ-GE*	MFZ*	MVZ*	SEZ-KD*	SLZ*	PCA (A24)*	PLA*	PEAD*
<b>MXZ-8C48NAHZ</b>	OK	OK	OK	OK	OK	OK	NO	OK	24, 30, 36 OK

\* Refer to indoor unit submittal.

**Notes:**

- Minimum of two Indoor Units must be connected to the MXZ-8C48NAHZ.
- Minimum installed capacity cannot be less than 12,000 Btu/h.
- System can operate with only one Indoor Unit turned on.
- May connect to any style indoor unit or combination.
- Information provided at 208/230V.  
Refer to the MXZ-C Technical & Service Manual for detailed specifications and additional information per Indoor Unit Combination.

**MVZ CONNECTION RULES:**

- Up to 2 MVZ's may be connected to this system.
- When 2 MVZ's are connected, no additional indoor units can be used.
- When 1 MVZ is connected, additional indoor units can be connected.
- When 1 MVZ is connected, total connected capacity must be 130% or less.
- Connection limitations are altered with the use of the SPTB1 accessory. Refer to the SPTB1 documentation for more details.

Notes:

# MXZ-8C48NAHZ SYSTEM DESIGN

<b>Outdoor unit</b>		MXZ-8C48NAHZ	
		5HP	
	Rated capacity (kBTU/h)	Cooling	48
		Heating	54
		Refrigerant	R410A
Connectable indoor unit	<b>Capacity</b>		Type 06 to Type 36
	<b>Caution:</b> The indoor unit which rated capacity exceeds 36 kBTU/h (Type 36) can NOT be connected.		
	Number of units		2 to 8 units
Total system wide capacity		25 to 130% of outdoor unit capacity (12 to 62.4 kBTU/h)	
Connectable branch box	Number of units		1 or 2 units



Connectable indoor unit lineups (Heat pump inverter type)			Capacity class [kBTU/h]						
Model type	Model name	Capacity class [kBTU/h]							
		06	09	12	15	18	24	30	36
Wall mounted	Deluxe	MSZ-FE09/12/18NA	●	●		●			
		MSZ-FH09/12/15NA	●	●	●				
	Standard	MSZ-GE06/09/12/15/18/24NA	●	●	●	●	●		
Ceiling concealed	Low static pressure	SEZ-KD09/12/15/18NA		●	●	●			
	Middle static pressure	PEAD-A24/30/36AA4					●	●	●
4-way ceiling cassette	2 by 2 type	SLZ-KA09/12/15NA		●	●	●			
	Standard	PLA-A12/18/24/30/36BA4			●		●	●	●
Floor standing	MFZ-KA09/12/18NA			●	●		●		
Multi-position	MVZ-A12/18/24/30/36AA4				●		●	●	●

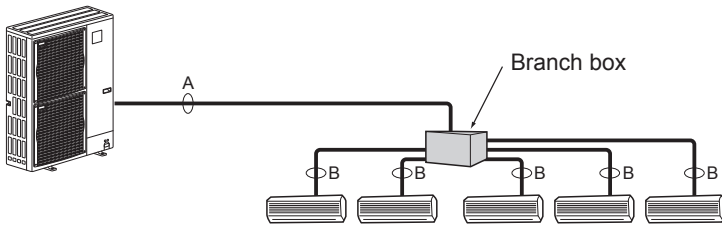


Branch box	PAC-MKA50BC	PAC-MKA30BC
Number of branches (Indoor unit that can be connected)	5 branches (MAX. 5 units)	3 branches (MAX. 3 units)

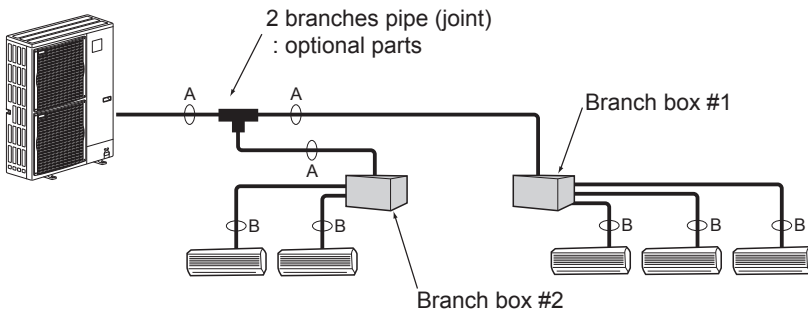
Note: A maximum of 2 branch boxes can be connected to 1 outdoor unit.

Branch Box Combinations	
Three-port	Five-port
1	0
0	1
1	1
2	0
0	2 (Up to 8 IDU)

- If Using One Branch Box  
Flare connection employed (No brazing)



- If Using Two Branch Boxes



- Installation procedure (2 branches pipe (joint))  
Refer to the installation manuals of MSDD-50AR-E and MSDD-50BR-E.

### Piping connection size

	A	B
Liquid	φ9.52 mm (3/8 inch)	The piping connection size differs according to the type and capacity of indoor units. Match the piping connection size of branch box with indoor unit. If the piping connection size of branch box does not match the piping connection size of indoor unit, use optional different-diameter (deformed) joints to the branch box side. (Connect deformed joint directly to the branch box side.)
Gas	φ15.88 mm (5/8 inch)	

# MXZ-8C48NAHZ COOLING AND HEATING CAPACITY AND CHARACTERISTICS

## 1. Method for obtaining system cooling and heating capacity:

To obtain the system cooling and heating capacity and the electrical characteristics of the outdoor unit, first add up the ratings of all the indoor units connected to the outdoor unit (see table below). For Standard Capacity Diagram, please refer to the MXZ-C Technical & Service Manual.

### (1) Capacity of indoor unit

	Model Number for indoor unit	Model 06	Model 09	Model 12	Model 15	Model 18	Model 24	Model 30	Model 36
M series	Model Capacity [kBTU/h]	6.0	9.0	12.0	14.0* <sup>1</sup> 15.0* <sup>2</sup>	17.2* <sup>3</sup> 18.0* <sup>4</sup>	22.5	—	—
P series		—	—	12.0	—	18.0	24.0	30.0	35.0
SEZ		—	8.1	11.5	14.1	17.2	—	—	—
SLZ		—	8.4	11.1	15.0	—	—	—	—
MVZ		—	—	12.0	—	18.0	24.0	30.0	36.0

\*1 The value is for MSZ-GE15NA.

\*2 The value is for MSZ-FH15NA.

\*3 The value is for MSZ-GE/FH18NA.

\*4 The value is for MSZ-FE18NA or MFZ-KA18NA.

### (2) Sample calculation

1 System assembled from indoor and outdoor unit (in this example the total capacity of the indoor units is greater than that of the outdoor unit)

- Outdoor unit MXZ-5C42NAHZ
- Indoor unit MSZ-GE09NA × 2 + MSZ-FH15NA × 2

2 According to the conditions in 1, the total capacity of the indoor unit will be:  $9.0 \times 2 + 15.0 \times 2 = 48.0$

3 The following figures are obtained from the 16.8 total capacity of indoor units, referring the standard capacity diagram in "4-3-3. MXZ-5C42NAHZ <cooling>" and "4-3-4. MXZ-5C42NAHZ <heating>".

Capacity (kBTU/h)		Outdoor unit power consumption (kW)		Outdoor unit current (A)/ 230 V	
Cooling	Heating	Cooling	Heating	Cooling	Heating
A 42.0	B 48.0	3.46	4.37	15.26	19.31

## 2. Method for obtaining the heating and cooling capacity of an indoor unit:

(1) The capacity of each indoor unit (kW) = the capacity A (or B)  $\times \frac{\text{model capacity}}{\text{total model capacity of all indoor units}}$

(2) Sample calculation (using the system described above in 4-1-1. (2) ):

#### During cooling:

- The total model capacity of the indoor unit is:  
 $9.0 \times 2 + 15.0 \times 2 = 48.0$  kBTU/h  
Therefore, the capacity of MSZ-GE09NA and MSZ-FH15NA will be calculated as follows by using the formula in 4-1-2. (1):

$$\text{Model 09} = 42.0 \times \frac{9.0}{48.0} = 7.88 \text{ kBTU/h}$$

$$\text{Model 15} = 42.0 \times \frac{15.0}{48.0} = 13.13 \text{ kBTU/h}$$

#### During heating:

- The total model capacity of indoor unit is:  
 $10.9 \times 2 + 18.0 \times 2 = 57.8$  kBTU/h  
Therefore, the capacity of MSZ-GE09NA and MSZ-FH15NA will be calculated as follows by using the formula in 4-1-2. (1):

$$\text{Model 25} = 48.0 \times \frac{10.9}{57.8} = 9.05 \text{ kBTU/h}$$

$$\text{Model 50} = 48.0 \times \frac{18.0}{57.8} = 14.95 \text{ kBTU/h}$$

# MXZ-8C48NAHZ OPERATIONAL PERFORMANCE

Operational Performance for Indoor Unit Combinations (Unit A + Unit B + Unit C+ Unit D + Unit E + Unit F + Unit H)	Cooling Capacity Range (Btu/h)								Power Usage Range (W)	Current (208/230V)
	Heating Capacity Range (Btu/h)									
	Unit A	Unit B	Unit C	Unit D	Unit E	Unit F	Unit G	Unit H		
6	6000	0	0	0	0	0	0	0	600	3.1 / 2.7
	7500	0	0	0	0	0	0	0	601	3 / 2.8
9	9000	0	0	0	0	0	0	0	700	3.6 / 3.1
	11300	0	0	0	0	0	0	0	901	4.5 / 4.3
12	12000	0	0	0	0	0	0	0	801	4 / 3.6
	15000	0	0	0	0	0	0	0	1200	6 / 5.9
15	15000	0	0	0	0	0	0	0	1001	5 / 4.4
	18800	0	0	0	0	0	0	0	1500	7.5 / 7.4
18	18000	0	0	0	0	0	0	0	1201	5.9 / 5.3
	22500	0	0	0	0	0	0	0	1800	9 / 9
24	24000	0	0	0	0	0	0	0	1600	7.8 / 7
	30000	0	0	0	0	0	0	0	2400	12 / 12.1
30	30000	0	0	0	0	0	0	0	2500	12 / 11.5
	37500	0	0	0	0	0	0	0	3450	17 / 16.1
36	36000	0	0	0	0	0	0	0	3800	16.3 / 16
	45000	0	0	0	0	0	0	0	4502	22 / 20.1
6 + 6	6000	6000	0	0	0	0	0	0	801	4 / 3.6
	7500	7500	0	0	0	0	0	0	1200	6 / 5.9
6 + 9	6000	9000	0	0	0	0	0	0	1001	5 / 4.4
	7520	11280	0	0	0	0	0	0	1500	7.5 / 7.4
6 + 12	6000	12000	0	0	0	0	0	0	1201	5.9 / 5.3
	7500	15000	0	0	0	0	0	0	1800	9 / 9
6 + 15	6000	15000	0	0	0	0	0	0	1401	6.9 / 6.2
	7514	18786	0	0	0	0	0	0	2100	10.5 / 10.5
6 + 18	6000	18000	0	0	0	0	0	0	1600	7.8 / 7
	7500	22500	0	0	0	0	0	0	2400	12 / 12.1
6 + 24	6000	24000	0	0	0	0	0	0	2500	12 / 11.5
	7500	30000	0	0	0	0	0	0	3450	17 / 16.1
6 + 30	6000	30000	0	0	0	0	0	0	3800	16.3 / 16
	7500	37500	0	0	0	0	0	0	4502	22 / 20.1
6 + 36	6000	36000	0	0	0	0	0	0	4000	19.5 / 19.5
	6857	41143	0	0	0	0	0	0	5052	24.8 / 22.6
9 + 9	9000	9000	0	0	0	0	0	0	1201	5.9 / 5.3
	11250	11250	0	0	0	0	0	0	1800	9 / 9
9 + 12	9000	12000	0	0	0	0	0	0	1401	6.9 / 6.2
	11271	15029	0	0	0	0	0	0	2100	10.5 / 10.5
9 + 15	9000	15000	0	0	0	0	0	0	1600	7.8 / 7
	11250	18750	0	0	0	0	0	0	2400	12 / 12.1
9 + 18	9000	18000	0	0	0	0	0	0	2050	9.9 / 9.3
	11267	22533	0	0	0	0	0	0	2925	14.5 / 14.1
9 + 24	9000	24000	0	0	0	0	0	0	2950	14.2 / 13.8
	11264	30036	0	0	0	0	0	0	3975	19.5 / 18.1
9 + 30	9000	30000	0	0	0	0	0	0	4100	17.9 / 17.8
	10731	35769	0	0	0	0	0	0	4777	23.4 / 21.3
9 + 36	9000	36000	0	0	0	0	0	0	4525	22.2 / 21
	10200	40800	0	0	0	0	0	0	5327	26.2 / 23.8
12 + 12	12000	12000	0	0	0	0	0	0	1600	7.8 / 7
	15000	15000	0	0	0	0	0	0	2400	12 / 12.1
12 + 15	12000	15000	0	0	0	0	0	0	2050	9.9 / 9.3
	15022	18778	0	0	0	0	0	0	2925	14.5 / 14.1
12 + 18	12000	18000	0	0	0	0	0	0	2500	12 / 11.5
	15000	22500	0	0	0	0	0	0	3450	17 / 16.1
12 + 24	12000	24000	0	0	0	0	0	0	3800	16.3 / 16
	15000	30000	0	0	0	0	0	0	4502	22 / 20.1
12 + 30	12000	30000	0	0	0	0	0	0	4000	19.5 / 19.5
	13714	34286	0	0	0	0	0	0	5052	24.8 / 22.6
12 + 36	12000	36000	0	0	0	0	0	0	5052	24.8 / 22.5
	13500	40500	0	0	0	0	0	0	5602	27.6 / 25
15 + 15	15000	15000	0	0	0	0	0	0	2500	12 / 11.5
	18750	18750	0	0	0	0	0	0	3450	17 / 16.1

# MXZ-8C48NAHZ OPERATIONAL PERFORMANCE, contd.

Operational Performance for Indoor Unit Combinations (Unit A + Unit B + Unit C+ Unit D + Unit E + Unit F + Unit H)	Cooling Capacity Range (Btu/h)								Power Usage Range (W)	Current (208/230V)
	Heating Capacity Range (Btu/h)									
	Unit A	Unit B	Unit C	Unit D	Unit E	Unit F	Unit G	Unit H		
15 + 18	15000	18000	0	0	0	0	0	0	2950	14.2 / 13.8
	18773	22527	0	0	0	0	0	0	3975	19.5 / 18.1
15 + 24	15000	24000	0	0	0	0	0	0	4100	17.9 / 17.8
	17885	28615	0	0	0	0	0	0	4777	23.4 / 21.3
15 + 30	15000	30000	0	0	0	0	0	0	4525	22.2 / 21
	17000	34000	0	0	0	0	0	0	5327	26.2 / 23.8
15 + 36	14118	33882	0	0	0	0	0	0	4988	24.5 / 22.2
	15882	38118	0	0	0	0	0	0	5502	26.9 / 24.5
18 + 18	18000	18000	0	0	0	0	0	0	3800	16.3 / 16
	22500	22500	0	0	0	0	0	0	4502	22 / 20.1
18 + 24	18000	24000	0	0	0	0	0	0	4000	19.5 / 19.5
	20571	27429	0	0	0	0	0	0	5052	24.8 / 22.6
18 + 30	18000	30000	0	0	0	0	0	0	5052	24.8 / 22.5
	20250	33750	0	0	0	0	0	0	5602	27.6 / 25
18 + 36	16000	32000	0	0	0	0	0	0	4923	24.2 / 21.9
	18000	36000	0	0	0	0	0	0	5400	26.3 / 24
24 + 24	24000	24000	0	0	0	0	0	0	5052	24.8 / 22.5
	27000	27000	0	0	0	0	0	0	5602	27.6 / 25
24 + 30	21333	26667	0	0	0	0	0	0	4923	24.2 / 21.9
	24000	30000	0	0	0	0	0	0	5400	26.3 / 24
24 + 36	19200	28800	0	0	0	0	0	0	4795	23.5 / 21.3
	21600	32400	0	0	0	0	0	0	5250	25.7 / 23.3
30 + 30	24000	24000	0	0	0	0	0	0	4795	23.5 / 21.3
	27000	27000	0	0	0	0	0	0	5250	25.7 / 23.3
6 + 6 + 6	6000	6000	6000	0	0	0	0	0	1201	5.9 / 5.3
	7500	7500	7500	0	0	0	0	0	1800	9 / 9
6 + 6 + 9	6000	6000	9000	0	0	0	0	0	1401	6.9 / 6.2
	7514	7514	11271	0	0	0	0	0	2100	10.5 / 10.5
6 + 6 + 12	6000	6000	12000	0	0	0	0	0	1600	7.8 / 7
	7500	7500	15000	0	0	0	0	0	2400	12 / 12.1
6 + 6 + 15	6000	6000	15000	0	0	0	0	0	2050	9.9 / 9.3
	7511	7511	18778	0	0	0	0	0	2925	14.5 / 14.1
6 + 6 + 18	6000	6000	18000	0	0	0	0	0	2500	12 / 11.5
	7500	7500	22500	0	0	0	0	0	3450	17 / 16.1
6 + 6 + 24	6000	6000	24000	0	0	0	0	0	3800	16.3 / 16
	7500	7500	30000	0	0	0	0	0	4502	22 / 20.1
6 + 6 + 30	6000	6000	30000	0	0	0	0	0	4000	19.5 / 19.5
	6857	6857	34286	0	0	0	0	0	5052	24.8 / 22.6
6 + 6 + 36	6000	6000	36000	0	0	0	0	0	5052	24.8 / 22.5
	6750	6750	40500	0	0	0	0	0	5602	27.6 / 25
6 + 9 + 9	6000	9000	9000	0	0	0	0	0	1600	7.8 / 7
	7500	11250	11250	0	0	0	0	0	2400	12 / 12.1
6 + 9 + 12	6000	9000	12000	0	0	0	0	0	2050	9.9 / 9.3
	7511	11267	15022	0	0	0	0	0	2925	14.5 / 14.1
6 + 9 + 15	6000	9000	15000	0	0	0	0	0	2500	12 / 11.5
	7500	11250	18750	0	0	0	0	0	3450	17 / 16.1
6 + 9 + 18	6000	9000	18000	0	0	0	0	0	2950	14.2 / 13.8
	7509	11264	22527	0	0	0	0	0	3975	19.5 / 18.1
6 + 9 + 24	6000	9000	24000	0	0	0	0	0	4100	17.9 / 17.8
	7154	10731	28615	0	0	0	0	0	4777	23.4 / 21.3
6 + 9 + 30	6000	9000	30000	0	0	0	0	0	4525	22.2 / 21
	6800	10200	34000	0	0	0	0	0	5327	26.2 / 23.8
6 + 9 + 36	5647	8471	33882	0	0	0	0	0	4988	24.5 / 22.2
	6353	9529	38118	0	0	0	0	0	5502	26.9 / 24.5
6 + 12 + 12	6000	12000	12000	0	0	0	0	0	2500	12 / 11.5
	7500	15000	15000	0	0	0	0	0	3450	17 / 16.1
6 + 12 + 15	6000	12000	15000	0	0	0	0	0	2950	14.2 / 13.8
	7509	15018	18773	0	0	0	0	0	3975	19.5 / 18.1
6 + 12 + 18	6000	12000	18000	0	0	0	0	0	3800	16.3 / 16
	7500	15000	22500	0	0	0	0	0	4502	22 / 20.1

# MXZ-8C48NAHZ OPERATIONAL PERFORMANCE, contd.

Operational Performance for Indoor Unit Combinations (Unit A + Unit B + Unit C+ Unit D + Unit E + Unit F + Unit H)	Cooling Capacity Range (Btu/h)								Power Usage Range (W)	Current (208/230V)
	Heating Capacity Range (Btu/h)									
	Unit A	Unit B	Unit C	Unit D	Unit E	Unit F	Unit G	Unit H		
6 + 12 + 24	6000	12000	24000	0	0	0	0	0	4000	19.5 / 19.5
	6857	13714	27429	0	0	0	0	0	5052	24.8 / 22.6
6 + 12 + 30	6000	12000	30000	0	0	0	0	0	5052	24.8 / 22.5
	6750	13500	33750	0	0	0	0	0	5602	27.6 / 25
6 + 12 + 36	5333	10667	32000	0	0	0	0	0	4923	24.2 / 21.9
	6000	12000	36000	0	0	0	0	0	5400	26.3 / 24
6 + 15 + 15	6000	15000	15000	0	0	0	0	0	3800	16.3 / 16
	7500	18750	18750	0	0	0	0	0	4502	22 / 20.1
6 + 15 + 18	6000	15000	18000	0	0	0	0	0	4100	17.9 / 17.8
	7154	17885	21462	0	0	0	0	0	4777	23.4 / 21.3
6 + 15 + 24	6000	15000	24000	0	0	0	0	0	4525	22.2 / 21
	6800	17000	27200	0	0	0	0	0	5327	26.2 / 23.8
6 + 15 + 30	5647	14118	28235	0	0	0	0	0	4988	24.5 / 22.2
	6353	15882	31765	0	0	0	0	0	5502	26.9 / 24.5
6 + 15 + 36	5053	12632	30316	0	0	0	0	0	4859	23.8 / 21.6
	5684	14211	34105	0	0	0	0	0	5325	26 / 23.7
6 + 18 + 18	6000	18000	18000	0	0	0	0	0	4000	19.5 / 19.5
	6857	20571	20571	0	0	0	0	0	5052	24.8 / 22.6
6 + 18 + 24	6000	18000	24000	0	0	0	0	0	5052	24.8 / 22.5
	6750	20250	27000	0	0	0	0	0	5602	27.6 / 25
6 + 18 + 30	5333	16000	26667	0	0	0	0	0	4923	24.2 / 21.9
	6000	18000	30000	0	0	0	0	0	5400	26.3 / 24
6 + 18 + 36	4800	14400	28800	0	0	0	0	0	4795	23.5 / 21.3
	5400	16200	32400	0	0	0	0	0	5250	25.7 / 23.3
6 + 24 + 24	5333	21333	21333	0	0	0	0	0	4923	24.2 / 21.9
	6000	24000	24000	0	0	0	0	0	5400	26.3 / 24
6 + 24 + 30	4800	19200	24000	0	0	0	0	0	4795	23.5 / 21.3
	5400	21600	27000	0	0	0	0	0	5250	25.7 / 23.3
9 + 9 + 9	9000	9000	9000	0	0	0	0	0	2050	9.9 / 9.3
	11267	11267	11267	0	0	0	0	0	2925	14.5 / 14.1
9 + 9 + 12	9000	9000	12000	0	0	0	0	0	2500	12 / 11.5
	11250	11250	15000	0	0	0	0	0	3450	17 / 16.1
9 + 9 + 15	9000	9000	15000	0	0	0	0	0	2950	14.2 / 13.8
	11264	11264	18773	0	0	0	0	0	3975	19.5 / 18.1
9 + 9 + 18	9000	9000	18000	0	0	0	0	0	3800	16.3 / 16
	11250	11250	22500	0	0	0	0	0	4502	22 / 20.1
9 + 9 + 24	9000	9000	24000	0	0	0	0	0	4000	19.5 / 19.5
	10286	10286	27429	0	0	0	0	0	5052	24.8 / 22.6
9 + 9 + 30	9000	9000	30000	0	0	0	0	0	5052	24.8 / 22.5
	10125	10125	33750	0	0	0	0	0	5602	27.6 / 25
9 + 9 + 36	8000	8000	32000	0	0	0	0	0	4923	24.2 / 21.9
	9000	9000	36000	0	0	0	0	0	5400	26.3 / 24
9 + 12 + 12	9000	12000	12000	0	0	0	0	0	2950	14.2 / 13.8
	11264	15018	15018	0	0	0	0	0	3975	19.5 / 18.1
9 + 12 + 15	9000	12000	15000	0	0	0	0	0	3800	16.3 / 16
	11250	15000	18750	0	0	0	0	0	4502	22 / 20.1
9 + 12 + 18	9000	12000	18000	0	0	0	0	0	4100	17.9 / 17.8
	10731	14308	21462	0	0	0	0	0	4777	23.4 / 21.3
9 + 12 + 24	9000	12000	24000	0	0	0	0	0	4525	22.2 / 21
	10200	13600	27200	0	0	0	0	0	5327	26.2 / 23.8
9 + 12 + 30	8471	11294	28235	0	0	0	0	0	4988	24.5 / 22.2
	9529	12706	31765	0	0	0	0	0	5502	26.9 / 24.5
9 + 12 + 36	7579	10105	30316	0	0	0	0	0	4859	23.8 / 21.6
	8526	11368	34105	0	0	0	0	0	5325	26 / 23.7
9 + 15 + 15	9000	15000	15000	0	0	0	0	0	4100	17.9 / 17.8
	10731	17885	17885	0	0	0	0	0	4777	23.4 / 21.3
9 + 15 + 18	9000	15000	18000	0	0	0	0	0	4000	19.5 / 19.5
	10286	17143	20571	0	0	0	0	0	5052	24.8 / 22.6
9 + 15 + 24	9000	15000	24000	0	0	0	0	0	5052	24.8 / 22.5
	10125	16875	27000	0	0	0	0	0	5602	27.6 / 25



# MXZ-8C48NAHZ OPERATIONAL PERFORMANCE, contd.

Operational Performance for Indoor Unit Combinations (Unit A + Unit B + Unit C+ Unit D + Unit E + Unit F + Unit H)	Cooling Capacity Range (Btu/h)								Power Usage Range (W)	Current (208/230V)
	Heating Capacity Range (Btu/h)									
	Unit A	Unit B	Unit C	Unit D	Unit E	Unit F	Unit G	Unit H		
9 + 15 + 30	8000	13333	26667	0	0	0	0	0	4923	24.2 / 21.9
	9000	15000	30000	0	0	0	0	0	5400	26.3 / 24
9 + 15 + 36	7200	12000	28800	0	0	0	0	0	4795	23.5 / 21.3
	8100	13500	32400	0	0	0	0	0	5250	25.7 / 23.3
9 + 18 + 18	9000	18000	18000	0	0	0	0	0	4525	22.2 / 21
	10200	20400	20400	0	0	0	0	0	5327	26.2 / 23.8
9 + 18 + 24	8471	16941	22588	0	0	0	0	0	4988	24.5 / 22.2
	9529	19059	25412	0	0	0	0	0	5502	26.9 / 24.5
9 + 18 + 30	7579	15158	25263	0	0	0	0	0	4859	23.8 / 21.6
	8526	17053	28421	0	0	0	0	0	5325	26 / 23.7
9 + 24 + 24	7579	20211	20211	0	0	0	0	0	4859	23.8 / 21.6
	8526	22737	22737	0	0	0	0	0	5325	26 / 23.7
12 + 12 + 12	12000	12000	12000	0	0	0	0	0	3800	16.3 / 16
	15000	15000	15000	0	0	0	0	0	4502	22 / 20.1
12 + 12 + 15	12000	12000	15000	0	0	0	0	0	4100	17.9 / 17.8
	14308	14308	17885	0	0	0	0	0	4777	23.4 / 21.3
12 + 12 + 18	12000	12000	18000	0	0	0	0	0	4000	19.5 / 19.5
	13714	13714	20571	0	0	0	0	0	5052	24.8 / 22.6
12 + 12 + 24	12000	12000	24000	0	0	0	0	0	5052	24.8 / 22.5
	13500	13500	27000	0	0	0	0	0	5602	27.6 / 25
12 + 12 + 30	10667	10667	26667	0	0	0	0	0	4923	24.2 / 21.9
	12000	12000	30000	0	0	0	0	0	5400	26.3 / 24
12 + 12 + 36	9600	9600	28800	0	0	0	0	0	4795	23.5 / 21.3
	10800	10800	32400	0	0	0	0	0	5250	25.7 / 23.3
12 + 15 + 15	12000	15000	15000	0	0	0	0	0	4000	19.5 / 19.5
	13714	17143	17143	0	0	0	0	0	5052	24.8 / 22.6
12 + 15 + 18	12000	15000	18000	0	0	0	0	0	4525	22.2 / 21
	13600	17000	20400	0	0	0	0	0	5327	26.2 / 23.8
12 + 15 + 24	11294	14118	22588	0	0	0	0	0	4988	24.5 / 22.2
	12706	15882	25412	0	0	0	0	0	5502	26.9 / 24.5
12 + 15 + 30	10105	12632	25263	0	0	0	0	0	4859	23.8 / 21.6
	11368	14211	28421	0	0	0	0	0	5325	26 / 23.7
12 + 18 + 18	12000	18000	18000	0	0	0	0	0	5052	24.8 / 22.5
	13500	20250	20250	0	0	0	0	0	5602	27.6 / 25
12 + 18 + 24	10667	16000	21333	0	0	0	0	0	4923	24.2 / 21.9
	12000	18000	24000	0	0	0	0	0	5400	26.3 / 24
12 + 18 + 30	9600	14400	24000	0	0	0	0	0	4795	23.5 / 21.3
	10800	16200	27000	0	0	0	0	0	5250	25.7 / 23.3
12 + 24 + 24	9600	19200	19200	0	0	0	0	0	4795	23.5 / 21.3
	10800	21600	21600	0	0	0	0	0	5250	25.7 / 23.3
15 + 15 + 15	15000	15000	15000	0	0	0	0	0	4525	22.2 / 21
	17000	17000	17000	0	0	0	0	0	5327	26.2 / 23.8
15 + 15 + 18	15000	15000	18000	0	0	0	0	0	5052	24.8 / 22.5
	16875	16875	20250	0	0	0	0	0	5602	27.6 / 25
15 + 15 + 24	13333	13333	21333	0	0	0	0	0	4923	24.2 / 21.9
	15000	15000	24000	0	0	0	0	0	5400	26.3 / 24
15 + 15 + 30	12000	12000	24000	0	0	0	0	0	4795	23.5 / 21.3
	13500	13500	27000	0	0	0	0	0	5250	25.7 / 23.3
15 + 18 + 18	14118	16941	16941	0	0	0	0	0	4988	24.5 / 22.2
	15882	19059	19059	0	0	0	0	0	5502	26.9 / 24.5
15 + 18 + 24	12632	15158	20211	0	0	0	0	0	4859	23.8 / 21.6
	14211	17053	22737	0	0	0	0	0	5325	26 / 23.7
18 + 18 + 18	16000	16000	16000	0	0	0	0	0	4923	24.2 / 21.9
	18000	18000	18000	0	0	0	0	0	5400	26.3 / 24
18 + 18 + 24	14400	14400	19200	0	0	0	0	0	4795	23.5 / 21.3
	16200	16200	21600	0	0	0	0	0	5250	25.7 / 23.3
6 + 6 + 6 + 6	6000	6000	6000	6000	0	0	0	0	1600	7.8 / 7
	7500	7500	7500	7500	0	0	0	0	2400	12 / 12.1
6 + 6 + 6 + 9	6000	6000	6000	9000	0	0	0	0	2050	9.9 / 9.3
	7511	7511	7511	11267	0	0	0	0	2925	14.5 / 14.1



# MXZ-8C48NAHZ OPERATIONAL PERFORMANCE, contd.

Operational Performance for Indoor Unit Combinations (Unit A + Unit B + Unit C+ Unit D + Unit E + Unit F + Unit H)	Cooling Capacity Range (Btu/h)								Power Usage Range (W)	Current (208/230V)
	Heating Capacity Range (Btu/h)									
	Unit A	Unit B	Unit C	Unit D	Unit E	Unit F	Unit G	Unit H		
6 + 6 + 6 + 12	6000	6000	6000	12000	0	0	0	0	2500	12 / 11.5
	7500	7500	7500	15000	0	0	0	0	3450	17 / 16.1
6 + 6 + 6 + 15	6000	6000	6000	15000	0	0	0	0	2950	14.2 / 13.8
	7509	7509	7509	18773	0	0	0	0	3975	19.5 / 18.1
6 + 6 + 6 + 18	6000	6000	6000	18000	0	0	0	0	3800	16.3 / 16
	7500	7500	7500	22500	0	0	0	0	4502	22 / 20.1
6 + 6 + 6 + 24	6000	6000	6000	24000	0	0	0	0	4000	19.5 / 19.5
	6857	6857	6857	27429	0	0	0	0	5052	24.8 / 22.6
6 + 6 + 6 + 30	6000	6000	6000	30000	0	0	0	0	5052	24.8 / 22.5
	6750	6750	6750	33750	0	0	0	0	5602	27.6 / 25
6 + 6 + 6 + 36	5333	5333	5333	32000	0	0	0	0	4923	24.2 / 21.9
	6000	6000	6000	36000	0	0	0	0	5400	26.3 / 24
6 + 6 + 9 + 9	6000	6000	9000	9000	0	0	0	0	2500	12 / 11.5
	7500	7500	11250	11250	0	0	0	0	3450	17 / 16.1
6 + 6 + 9 + 12	6000	6000	9000	12000	0	0	0	0	2950	14.2 / 13.8
	7509	7509	11264	15018	0	0	0	0	3975	19.5 / 18.1
6 + 6 + 9 + 15	6000	6000	9000	15000	0	0	0	0	3800	16.3 / 16
	7500	7500	11250	18750	0	0	0	0	4502	22 / 20.1
6 + 6 + 9 + 18	6000	6000	9000	18000	0	0	0	0	4100	17.9 / 17.8
	7154	7154	10731	21462	0	0	0	0	4777	23.4 / 21.3
6 + 6 + 9 + 24	6000	6000	9000	24000	0	0	0	0	4525	22.2 / 21
	6800	6800	10200	27200	0	0	0	0	5327	26.2 / 23.8
6 + 6 + 9 + 30	5647	5647	8471	28235	0	0	0	0	4988	24.5 / 22.2
	6353	6353	9529	31765	0	0	0	0	5502	26.9 / 24.5
6 + 6 + 9 + 36	5053	5053	7579	30316	0	0	0	0	4859	23.8 / 21.6
	5684	5684	8526	34105	0	0	0	0	5325	26 / 23.7
6 + 6 + 12 + 12	6000	6000	12000	12000	0	0	0	0	3800	16.3 / 16
	7500	7500	15000	15000	0	0	0	0	4502	22 / 20.1
6 + 6 + 12 + 15	6000	6000	12000	15000	0	0	0	0	4100	17.9 / 17.8
	7154	7154	14308	17885	0	0	0	0	4777	23.4 / 21.3
6 + 6 + 12 + 18	6000	6000	12000	18000	0	0	0	0	4000	19.5 / 19.5
	6857	6857	13714	20571	0	0	0	0	5052	24.8 / 22.6
6 + 6 + 12 + 24	6000	6000	12000	24000	0	0	0	0	5052	24.8 / 22.5
	6750	6750	13500	27000	0	0	0	0	5602	27.6 / 25
6 + 6 + 12 + 30	5333	5333	10667	26667	0	0	0	0	4923	24.2 / 21.9
	6000	6000	12000	30000	0	0	0	0	5400	26.3 / 24
6 + 6 + 12 + 36	4800	4800	9600	28800	0	0	0	0	4795	23.5 / 21.3
	5400	5400	10800	32400	0	0	0	0	5250	25.7 / 23.3
6 + 6 + 15 + 15	6000	6000	15000	15000	0	0	0	0	4000	19.5 / 19.5
	6857	6857	17143	17143	0	0	0	0	5052	24.8 / 22.6
6 + 6 + 15 + 18	6000	6000	15000	18000	0	0	0	0	4525	22.2 / 21
	6800	6800	17000	20400	0	0	0	0	5327	26.2 / 23.8
6 + 6 + 15 + 24	5647	5647	14118	22588	0	0	0	0	4988	24.5 / 22.2
	6353	6353	15882	25412	0	0	0	0	5502	26.9 / 24.5
6 + 6 + 15 + 30	5053	5053	12632	25263	0	0	0	0	4859	23.8 / 21.6
	5684	5684	14211	28421	0	0	0	0	5325	26 / 23.7
6 + 6 + 18 + 18	6000	6000	18000	18000	0	0	0	0	5052	24.8 / 22.5
	6750	6750	20250	20250	0	0	0	0	5602	27.6 / 25
6 + 6 + 18 + 24	5333	5333	16000	21333	0	0	0	0	4923	24.2 / 21.9
	6000	6000	18000	24000	0	0	0	0	5400	26.3 / 24
6 + 6 + 18 + 30	4800	4800	14400	24000	0	0	0	0	4795	23.5 / 21.3
	5400	5400	16200	27000	0	0	0	0	5250	25.7 / 23.3
6 + 6 + 24 + 24	4800	4800	19200	19200	0	0	0	0	4795	23.5 / 21.3
	5400	5400	21600	21600	0	0	0	0	5250	25.7 / 23.3
6 + 9 + 9 + 9	6000	9000	9000	9000	0	0	0	0	2950	14.2 / 13.8
	7509	11264	11264	11264	0	0	0	0	3975	19.5 / 18.1
6 + 9 + 9 + 12	6000	9000	9000	12000	0	0	0	0	3800	16.3 / 16
	7500	11250	11250	15000	0	0	0	0	4502	22 / 20.1
6 + 9 + 9 + 15	6000	9000	9000	15000	0	0	0	0	4100	17.9 / 17.8
	7154	10731	10731	17885	0	0	0	0	4777	23.4 / 21.3

# MXZ-8C48NAHZ OPERATIONAL PERFORMANCE, contd.

Operational Performance for Indoor Unit Combinations (Unit A + Unit B + Unit C+ Unit D + Unit E + Unit F + Unit H)	Cooling Capacity Range (Btu/h)								Power Usage Range (W)	Current (208/230V)
	Heating Capacity Range (Btu/h)									
	Unit A	Unit B	Unit C	Unit D	Unit E	Unit F	Unit G	Unit H		
6 + 9 + 9 + 18	6000	9000	9000	18000	0	0	0	0	4000	19.5 / 19.5
	6857	10286	10286	20571	0	0	0	0	5052	24.8 / 22.6
6 + 9 + 9 + 24	6000	9000	9000	24000	0	0	0	0	5052	24.8 / 22.5
	6750	10125	10125	27000	0	0	0	0	5602	27.6 / 25
6 + 9 + 12 + 12	6000	9000	12000	12000	0	0	0	0	4100	17.9 / 17.8
	7154	10731	14308	14308	0	0	0	0	4777	23.4 / 21.3
6 + 9 + 12 + 15	6000	9000	12000	15000	0	0	0	0	4000	19.5 / 19.5
	6857	10286	13714	17143	0	0	0	0	5052	24.8 / 22.6
6 + 9 + 12 + 18	6000	9000	12000	18000	0	0	0	0	4525	22.2 / 21
	6800	10200	13600	20400	0	0	0	0	5327	26.2 / 23.8
6 + 9 + 12 + 24	5647	8471	11294	22588	0	0	0	0	4988	24.5 / 22.2
	6353	9529	12706	25412	0	0	0	0	5502	26.9 / 24.5
6 + 9 + 12 + 30	5053	7579	10105	25263	0	0	0	0	4859	23.8 / 21.6
	5684	8526	11368	28421	0	0	0	0	5325	26 / 23.7
6 + 9 + 15 + 15	6000	9000	15000	15000	0	0	0	0	4525	22.2 / 21
	6800	10200	17000	17000	0	0	0	0	5327	26.2 / 23.8
6 + 9 + 15 + 18	6000	9000	15000	18000	0	0	0	0	5052	24.8 / 22.5
	6750	10125	16875	20250	0	0	0	0	5602	27.6 / 25
6 + 9 + 15 + 24	5333	8000	13333	21333	0	0	0	0	4923	24.2 / 21.9
	6000	9000	15000	24000	0	0	0	0	5400	26.3 / 24
6 + 9 + 15 + 30	4800	7200	12000	24000	0	0	0	0	4795	23.5 / 21.3
	5400	8100	13500	27000	0	0	0	0	5250	25.7 / 23.3
6 + 9 + 18 + 18	5647	8471	16941	16941	0	0	0	0	4988	24.5 / 22.2
	6353	9529	19059	19059	0	0	0	0	5502	26.9 / 24.5
6 + 9 + 18 + 24	5053	7579	15158	20211	0	0	0	0	4859	23.8 / 21.6
	5684	8526	17053	22737	0	0	0	0	5325	26 / 23.7
6 + 12 + 12 + 12	6000	12000	12000	12000	0	0	0	0	4000	19.5 / 19.5
	6857	13714	13714	13714	0	0	0	0	5052	24.8 / 22.6
6 + 12 + 12 + 15	6000	12000	12000	15000	0	0	0	0	4525	22.2 / 21
	6800	13600	13600	17000	0	0	0	0	5327	26.2 / 23.8
6 + 12 + 12 + 18	6000	12000	12000	18000	0	0	0	0	5052	24.8 / 22.5
	6750	13500	13500	20250	0	0	0	0	5602	27.6 / 25
6 + 12 + 12 + 24	5333	10667	10667	21333	0	0	0	0	4923	24.2 / 21.9
	6000	12000	12000	24000	0	0	0	0	5400	26.3 / 24
6 + 12 + 12 + 30	4800	9600	9600	24000	0	0	0	0	4795	23.5 / 21.3
	5400	10800	10800	27000	0	0	0	0	5250	25.7 / 23.3
6 + 12 + 15 + 15	6000	12000	15000	15000	0	0	0	0	5052	24.8 / 22.5
	6750	13500	16875	16875	0	0	0	0	5602	27.6 / 25
6 + 12 + 15 + 18	5647	11294	14118	16941	0	0	0	0	4988	24.5 / 22.2
	6353	12706	15882	19059	0	0	0	0	5502	26.9 / 24.5
6 + 12 + 15 + 24	5053	10105	12632	20211	0	0	0	0	4859	23.8 / 21.6
	5684	11368	14211	22737	0	0	0	0	5325	26 / 23.7
6 + 12 + 18 + 18	5333	10667	16000	16000	0	0	0	0	4923	24.2 / 21.9
	6000	12000	18000	18000	0	0	0	0	5400	26.3 / 24
6 + 12 + 18 + 24	4800	9600	14400	19200	0	0	0	0	4795	23.5 / 21.3
	5400	10800	16200	21600	0	0	0	0	5250	25.7 / 23.3
6 + 15 + 15 + 15	5647	14118	14118	14118	0	0	0	0	4988	24.5 / 22.2
	6353	15882	15882	15882	0	0	0	0	5502	26.9 / 24.5
6 + 15 + 15 + 18	5333	13333	13333	16000	0	0	0	0	4923	24.2 / 21.9
	6000	15000	15000	18000	0	0	0	0	5400	26.3 / 24
6 + 15 + 15 + 24	4800	12000	12000	19200	0	0	0	0	4795	23.5 / 21.3
	5400	13500	13500	21600	0	0	0	0	5250	25.7 / 23.3
6 + 15 + 18 + 18	5053	12632	15158	15158	0	0	0	0	4859	23.8 / 21.6
	5684	14211	17053	17053	0	0	0	0	5325	26 / 23.7
6 + 18 + 18 + 18	4800	14400	14400	14400	0	0	0	0	4795	23.5 / 21.3
	5400	16200	16200	16200	0	0	0	0	5250	25.7 / 23.3
9 + 9 + 9 + 9	9000	9000	9000	9000	0	0	0	0	3800	16.3 / 16
	11250	11250	11250	11250	0	0	0	0	4502	22 / 20.1
9 + 9 + 9 + 12	9000	9000	9000	12000	0	0	0	0	4100	17.9 / 17.8
	10731	10731	10731	14308	0	0	0	0	4777	23.4 / 21.3

# MXZ-8C48NAHZ OPERATIONAL PERFORMANCE, contd.

Operational Performance for Indoor Unit Combinations (Unit A + Unit B + Unit C+ Unit D + Unit E + Unit F + Unit H)	Cooling Capacity Range (Btu/h)								Power Usage Range (W)	Current (208/230V)
	Heating Capacity Range (Btu/h)									
	Unit A	Unit B	Unit C	Unit D	Unit E	Unit F	Unit G	Unit H		
9 + 9 + 9 + 15	9000	9000	9000	15000	0	0	0	0	4000	19.5 / 19.5
	10286	10286	10286	17143	0	0	0	0	5052	24.8 / 22.6
9 + 9 + 9 + 18	9000	9000	9000	18000	0	0	0	0	4525	22.2 / 21
	10200	10200	10200	20400	0	0	0	0	5327	26.2 / 23.8
9 + 9 + 9 + 24	8471	8471	8471	22588	0	0	0	0	4988	24.5 / 22.2
	9529	9529	9529	25412	0	0	0	0	5502	26.9 / 24.5
9 + 9 + 9 + 30	7579	7579	7579	25263	0	0	0	0	4859	23.8 / 21.6
	8526	8526	8526	28421	0	0	0	0	5325	26 / 23.7
9 + 9 + 12 + 12	9000	9000	12000	12000	0	0	0	0	4000	19.5 / 19.5
	10286	10286	13714	13714	0	0	0	0	5052	24.8 / 22.6
9 + 9 + 12 + 15	9000	9000	12000	15000	0	0	0	0	4525	22.2 / 21
	10200	10200	13600	17000	0	0	0	0	5327	26.2 / 23.8
9 + 9 + 12 + 18	9000	9000	12000	18000	0	0	0	0	5052	24.8 / 22.5
	10125	10125	13500	20250	0	0	0	0	5602	27.6 / 25
9 + 9 + 12 + 24	8000	8000	10667	21333	0	0	0	0	4923	24.2 / 21.9
	9000	9000	12000	24000	0	0	0	0	5400	26.3 / 24
9 + 9 + 12 + 30	7200	7200	9600	24000	0	0	0	0	4795	23.5 / 21.3
	8100	8100	10800	27000	0	0	0	0	5250	25.7 / 23.3
9 + 9 + 15 + 15	9000	9000	15000	15000	0	0	0	0	5052	24.8 / 22.5
	10125	10125	16875	16875	0	0	0	0	5602	27.6 / 25
9 + 9 + 15 + 18	8471	8471	14118	16941	0	0	0	0	4988	24.5 / 22.2
	9529	9529	15882	19059	0	0	0	0	5502	26.9 / 24.5
9 + 9 + 15 + 24	7579	7579	12632	20211	0	0	0	0	4859	23.8 / 21.6
	8526	8526	14211	22737	0	0	0	0	5325	26 / 23.7
9 + 12 + 12 + 12	9000	12000	12000	12000	0	0	0	0	4525	22.2 / 21
	10200	13600	13600	13600	0	0	0	0	5327	26.2 / 23.8
9 + 12 + 12 + 15	9000	12000	12000	15000	0	0	0	0	5052	24.8 / 22.5
	10125	13500	13500	16875	0	0	0	0	5602	27.6 / 25
9 + 12 + 12 + 18	8471	11294	11294	16941	0	0	0	0	4988	24.5 / 22.2
	9529	12706	12706	19059	0	0	0	0	5502	26.9 / 24.5
9 + 12 + 12 + 24	7579	10105	10105	20211	0	0	0	0	4859	23.8 / 21.6
	8526	11368	11368	22737	0	0	0	0	5325	26 / 23.7
9 + 12 + 15 + 15	8471	11294	14118	14118	0	0	0	0	4988	24.5 / 22.2
	9529	12706	15882	15882	0	0	0	0	5502	26.9 / 24.5
9 + 12 + 15 + 18	8000	10667	13333	16000	0	0	0	0	4923	24.2 / 21.9
	9000	12000	15000	18000	0	0	0	0	5400	26.3 / 24
9 + 12 + 15 + 24	7200	9600	12000	19200	0	0	0	0	4795	23.5 / 21.3
	8100	10800	13500	21600	0	0	0	0	5250	25.7 / 23.3
9 + 12 + 18 + 18	7579	10105	15158	15158	0	0	0	0	4859	23.8 / 21.6
	8526	11368	17053	17053	0	0	0	0	5325	26 / 23.7
9 + 15 + 15 + 15	8000	13333	13333	13333	0	0	0	0	4923	24.2 / 21.9
	9000	15000	15000	15000	0	0	0	0	5400	26.3 / 24
9 + 15 + 15 + 18	7579	12632	12632	15158	0	0	0	0	4859	23.8 / 21.6
	8526	14211	14211	17053	0	0	0	0	5325	26 / 23.7
12 + 12 + 12 + 12	12000	12000	12000	12000	0	0	0	0	5052	24.8 / 22.5
	13500	13500	13500	13500	0	0	0	0	5602	27.6 / 25
12 + 12 + 12 + 15	11294	11294	11294	14118	0	0	0	0	4988	24.5 / 22.2
	12706	12706	12706	15882	0	0	0	0	5502	26.9 / 24.5
12 + 12 + 12 + 18	10667	10667	10667	16000	0	0	0	0	4923	24.2 / 21.9
	12000	12000	12000	18000	0	0	0	0	5400	26.3 / 24
12 + 12 + 12 + 24	9600	9600	9600	19200	0	0	0	0	4795	23.5 / 21.3
	10800	10800	10800	21600	0	0	0	0	5250	25.7 / 23.3
12 + 12 + 15 + 15	10667	10667	13333	13333	0	0	0	0	4923	24.2 / 21.9
	12000	12000	15000	15000	0	0	0	0	5400	26.3 / 24
12 + 12 + 15 + 18	10105	10105	12632	15158	0	0	0	0	4859	23.8 / 21.6
	11368	11368	14211	17053	0	0	0	0	5325	26 / 23.7
12 + 15 + 15 + 15	10105	12632	12632	12632	0	0	0	0	4859	23.8 / 21.6
	11368	14211	14211	14211	0	0	0	0	5325	26 / 23.7
12 + 15 + 15 + 18	9600	12000	12000	14400	0	0	0	0	4795	23.5 / 21.3
	10800	13500	13500	16200	0	0	0	0	5250	25.7 / 23.3

# MXZ-8C48NAHZ OPERATIONAL PERFORMANCE, contd.

Operational Performance for Indoor Unit Combinations (Unit A + Unit B + Unit C + Unit D + Unit E + Unit F + Unit H)	Cooling Capacity Range (Btu/h)								Power Usage Range (W)	Current (208/230V)
	Heating Capacity Range (Btu/h)									
	Unit A	Unit B	Unit C	Unit D	Unit E	Unit F	Unit G	Unit H		
15 + 15 + 15 + 15	12000	12000	12000	12000	0	0	0	0	4795	23.5 / 21.3
	13500	13500	13500	13500	0	0	0	0	5250	25.7 / 23.3
6 + 6 + 6 + 6 + 6	6000	6000	6000	6000	6000	0	0	0	2500	12 / 11.5
	7500	7500	7500	7500	7500	0	0	0	3450	17 / 16.1
6 + 6 + 6 + 6 + 9	6000	6000	6000	6000	9000	0	0	0	2950	14.2 / 13.8
	7509	7509	7509	7509	11264	0	0	0	3975	19.5 / 18.1
6 + 6 + 6 + 6 + 12	6000	6000	6000	6000	12000	0	0	0	3800	16.3 / 16
	7500	7500	7500	7500	15000	0	0	0	4502	22 / 20.1
6 + 6 + 6 + 6 + 15	6000	6000	6000	6000	15000	0	0	0	4100	17.9 / 17.8
	7154	7154	7154	7154	17885	0	0	0	4777	23.4 / 21.3
6 + 6 + 6 + 6 + 18	6000	6000	6000	6000	18000	0	0	0	4000	19.5 / 19.5
	6857	6857	6857	6857	20571	0	0	0	5052	24.8 / 22.6
6 + 6 + 6 + 6 + 24	6000	6000	6000	6000	24000	0	0	0	5052	24.8 / 22.5
	6750	6750	6750	6750	27000	0	0	0	5602	27.6 / 25
6 + 6 + 6 + 6 + 30	5333	5333	5333	5333	26667	0	0	0	4923	24.2 / 21.9
	6000	6000	6000	6000	30000	0	0	0	5400	26.3 / 24
6 + 6 + 6 + 6 + 36	4800	4800	4800	4800	28800	0	0	0	4795	23.5 / 21.3
	5400	5400	5400	5400	32400	0	0	0	5250	25.7 / 23.3
6 + 6 + 6 + 9 + 9	6000	6000	6000	9000	9000	0	0	0	3800	16.3 / 16
	7500	7500	7500	11250	11250	0	0	0	4502	22 / 20.1
6 + 6 + 6 + 9 + 12	6000	6000	6000	9000	12000	0	0	0	4100	17.9 / 17.8
	7154	7154	7154	10731	14308	0	0	0	4777	23.4 / 21.3
6 + 6 + 6 + 9 + 15	6000	6000	6000	9000	15000	0	0	0	4000	19.5 / 19.5
	6857	6857	6857	10286	17143	0	0	0	5052	24.8 / 22.6
6 + 6 + 6 + 9 + 18	6000	6000	6000	9000	18000	0	0	0	4525	22.2 / 21
	6800	6800	6800	10200	20400	0	0	0	5327	26.2 / 23.8
6 + 6 + 6 + 9 + 24	5647	5647	5647	8471	22588	0	0	0	4988	24.5 / 22.2
	6353	6353	6353	9529	25412	0	0	0	5502	26.9 / 24.5
6 + 6 + 6 + 9 + 30	5053	5053	5053	7579	25263	0	0	0	4859	23.8 / 21.6
	5684	5684	5684	8526	28421	0	0	0	5325	26 / 23.7
6 + 6 + 6 + 12 + 12	6000	6000	6000	12000	12000	0	0	0	4000	19.5 / 19.5
	6857	6857	6857	13714	13714	0	0	0	5052	24.8 / 22.6
6 + 6 + 6 + 12 + 15	6000	6000	6000	12000	15000	0	0	0	4525	22.2 / 21
	6800	6800	6800	13600	17000	0	0	0	5327	26.2 / 23.8
6 + 6 + 6 + 12 + 18	6000	6000	6000	12000	18000	0	0	0	5052	24.8 / 22.5
	6750	6750	6750	13500	20250	0	0	0	5602	27.6 / 25
6 + 6 + 6 + 12 + 24	5333	5333	5333	10667	21333	0	0	0	4923	24.2 / 21.9
	6000	6000	6000	12000	24000	0	0	0	5400	26.3 / 24
6 + 6 + 6 + 12 + 30	4800	4800	4800	9600	24000	0	0	0	4795	23.5 / 21.3
	5400	5400	5400	10800	27000	0	0	0	5250	25.7 / 23.3
6 + 6 + 6 + 15 + 15	6000	6000	6000	15000	15000	0	0	0	5052	24.8 / 22.5
	6750	6750	6750	16875	16875	0	0	0	5602	27.6 / 25
6 + 6 + 6 + 15 + 18	5647	5647	5647	14118	16941	0	0	0	4988	24.5 / 22.2
	6353	6353	6353	15882	19059	0	0	0	5502	26.9 / 24.5
6 + 6 + 6 + 15 + 24	5053	5053	5053	12632	20211	0	0	0	4859	23.8 / 21.6
	5684	5684	5684	14211	22737	0	0	0	5325	26 / 23.7
6 + 6 + 6 + 18 + 18	5333	5333	5333	16000	16000	0	0	0	4923	24.2 / 21.9
	6000	6000	6000	18000	18000	0	0	0	5400	26.3 / 24
6 + 6 + 6 + 18 + 24	4800	4800	4800	14400	19200	0	0	0	4795	23.5 / 21.3
	5400	5400	5400	16200	21600	0	0	0	5250	25.7 / 23.3
6 + 6 + 9 + 9 + 9	6000	6000	9000	9000	9000	0	0	0	4100	17.9 / 17.8
	7154	7154	10731	10731	10731	0	0	0	4777	23.4 / 21.3
6 + 6 + 9 + 9 + 12	6000	6000	9000	9000	12000	0	0	0	4000	19.5 / 19.5
	6857	6857	10286	10286	13714	0	0	0	5052	24.8 / 22.6
6 + 6 + 9 + 9 + 15	6000	6000	9000	9000	15000	0	0	0	4525	22.2 / 21
	6800	6800	10200	10200	17000	0	0	0	5327	26.2 / 23.8
6 + 6 + 9 + 9 + 18	6000	6000	9000	9000	18000	0	0	0	5052	24.8 / 22.5
	6750	6750	10125	10125	20250	0	0	0	5602	27.6 / 25
6 + 6 + 9 + 9 + 24	5333	5333	8000	8000	21333	0	0	0	4923	24.2 / 21.9
	6000	6000	9000	9000	24000	0	0	0	5400	26.3 / 24

# MXZ-8C48NAHZ OPERATIONAL PERFORMANCE, contd.

Operational Performance for Indoor Unit Combinations (Unit A + Unit B + Unit C+ Unit D + Unit E + Unit F + Unit H)	Cooling Capacity Range (Btu/h)								Power Usage Range (W)	Current (208/230V)
	Heating Capacity Range (Btu/h)									
	Unit A	Unit B	Unit C	Unit D	Unit E	Unit F	Unit G	Unit H		
6 + 6 + 9 + 9 + 30	4800	4800	7200	7200	24000	0	0	0	4795	23.5 / 21.3
	5400	5400	8100	8100	27000	0	0	0	5250	25.7 / 23.3
6 + 6 + 9 + 12 + 12	6000	6000	9000	12000	12000	0	0	0	4525	22.2 / 21
	6800	6800	10200	13600	13600	0	0	0	5327	26.2 / 23.8
6 + 6 + 9 + 12 + 15	6000	6000	9000	12000	15000	0	0	0	5052	24.8 / 22.5
	6750	6750	10125	13500	16875	0	0	0	5602	27.6 / 25
6 + 6 + 9 + 12 + 18	5647	5647	8471	11294	16941	0	0	0	4988	24.5 / 22.2
	6353	6353	9529	12706	19059	0	0	0	5502	26.9 / 24.5
6 + 6 + 9 + 12 + 24	5053	5053	7579	10105	20211	0	0	0	4859	23.8 / 21.6
	5684	5684	8526	11368	22737	0	0	0	5325	26 / 23.7
6 + 6 + 9 + 15 + 15	5647	5647	8471	14118	14118	0	0	0	4988	24.5 / 22.2
	6353	6353	9529	15882	15882	0	0	0	5502	26.9 / 24.5
6 + 6 + 9 + 15 + 18	5333	5333	8000	13333	16000	0	0	0	4923	24.2 / 21.9
	6000	6000	9000	15000	18000	0	0	0	5400	26.3 / 24
6 + 6 + 9 + 15 + 24	4800	4800	7200	12000	19200	0	0	0	4795	23.5 / 21.3
	5400	5400	8100	13500	21600	0	0	0	5250	25.7 / 23.3
6 + 6 + 9 + 18 + 18	5053	5053	7579	15158	15158	0	0	0	4859	23.8 / 21.6
	5684	5684	8526	17053	17053	0	0	0	5325	26 / 23.7
6 + 6 + 12 + 12 + 12	6000	6000	12000	12000	12000	0	0	0	5052	24.8 / 22.5
	6750	6750	13500	13500	13500	0	0	0	5602	27.6 / 25
6 + 6 + 12 + 12 + 15	5647	5647	11294	11294	14118	0	0	0	4988	24.5 / 22.2
	6353	6353	12706	12706	15882	0	0	0	5502	26.9 / 24.5
6 + 6 + 12 + 12 + 18	5333	5333	10667	10667	16000	0	0	0	4923	24.2 / 21.9
	6000	6000	12000	12000	18000	0	0	0	5400	26.3 / 24
6 + 6 + 12 + 12 + 24	4800	4800	9600	9600	19200	0	0	0	4795	23.5 / 21.3
	5400	5400	10800	10800	21600	0	0	0	5250	25.7 / 23.3
6 + 6 + 12 + 15 + 15	5333	5333	10667	13333	13333	0	0	0	4923	24.2 / 21.9
	6000	6000	12000	15000	15000	0	0	0	5400	26.3 / 24
6 + 6 + 12 + 15 + 18	5053	5053	10105	12632	15158	0	0	0	4859	23.8 / 21.6
	5684	5684	11368	14211	17053	0	0	0	5325	26 / 23.7
6 + 6 + 12 + 18 + 18	4800	4800	9600	14400	14400	0	0	0	4795	23.5 / 21.3
	5400	5400	10800	16200	16200	0	0	0	5250	25.7 / 23.3
6 + 6 + 15 + 15 + 15	5053	5053	12632	12632	12632	0	0	0	4859	23.8 / 21.6
	5684	5684	14211	14211	14211	0	0	0	5325	26 / 23.7
6 + 6 + 15 + 15 + 18	4800	4800	12000	12000	14400	0	0	0	4795	23.5 / 21.3
	5400	5400	13500	13500	16200	0	0	0	5250	25.7 / 23.3
6 + 9 + 9 + 9 + 9	6000	9000	9000	9000	9000	0	0	0	4000	19.5 / 19.5
	6857	10286	10286	10286	10286	0	0	0	5052	24.8 / 22.6
6 + 9 + 9 + 9 + 12	6000	9000	9000	9000	12000	0	0	0	4525	22.2 / 21
	6800	10200	10200	10200	13600	0	0	0	5327	26.2 / 23.8
6 + 9 + 9 + 9 + 15	6000	9000	9000	9000	15000	0	0	0	5052	24.8 / 22.5
	6750	10125	10125	10125	16875	0	0	0	5602	27.6 / 25
6 + 9 + 9 + 9 + 18	5647	8471	8471	8471	16941	0	0	0	4988	24.5 / 22.2
	6353	9529	9529	9529	19059	0	0	0	5502	26.9 / 24.5
6 + 9 + 9 + 9 + 24	5053	7579	7579	7579	20211	0	0	0	4859	23.8 / 21.6
	5684	8526	8526	8526	22737	0	0	0	5325	26 / 23.7
6 + 9 + 9 + 12 + 12	6000	9000	9000	12000	12000	0	0	0	5052	24.8 / 22.5
	6750	10125	10125	13500	13500	0	0	0	5602	27.6 / 25
6 + 9 + 9 + 12 + 15	5647	8471	8471	11294	14118	0	0	0	4988	24.5 / 22.2
	6353	9529	9529	12706	15882	0	0	0	5502	26.9 / 24.5
6 + 9 + 9 + 12 + 18	5333	8000	8000	10667	16000	0	0	0	4923	24.2 / 21.9
	6000	9000	9000	12000	18000	0	0	0	5400	26.3 / 24
6 + 9 + 9 + 12 + 24	4800	7200	7200	9600	19200	0	0	0	4795	23.5 / 21.3
	5400	8100	8100	10800	21600	0	0	0	5250	25.7 / 23.3
6 + 9 + 9 + 15 + 15	5333	8000	8000	13333	13333	0	0	0	4923	24.2 / 21.9
	6000	9000	9000	15000	15000	0	0	0	5400	26.3 / 24
6 + 9 + 9 + 15 + 18	5053	7579	7579	12632	15158	0	0	0	4859	23.8 / 21.6
	5684	8526	8526	14211	17053	0	0	0	5325	26 / 23.7
6 + 9 + 9 + 18 + 18	4800	7200	7200	14400	14400	0	0	0	4795	23.5 / 21.3
	5400	8100	8100	16200	16200	0	0	0	5250	25.7 / 23.3

# MXZ-8C48NAHZ OPERATIONAL PERFORMANCE, contd.

Operational Performance for Indoor Unit Combinations (Unit A + Unit B + Unit C+ Unit D + Unit E + Unit F + Unit H)	Cooling Capacity Range (Btu/h)								Power Usage Range (W)	Current (208/230V)
	Heating Capacity Range (Btu/h)									
	Unit A	Unit B	Unit C	Unit D	Unit E	Unit F	Unit G	Unit H		
6 + 9 + 12 + 12 + 12	5647	8471	11294	11294	11294	0	0	0	4988	24.5 / 22.2
	6353	9529	12706	12706	12706	0	0	0	5502	26.9 / 24.5
6 + 9 + 12 + 12 + 15	5333	8000	10667	10667	13333	0	0	0	4923	24.2 / 21.9
	6000	9000	12000	12000	15000	0	0	0	5400	26.3 / 24
6 + 9 + 12 + 12 + 18	5053	7579	10105	10105	15158	0	0	0	4859	23.8 / 21.6
	5684	8526	11368	11368	17053	0	0	0	5325	26 / 23.7
6 + 9 + 15 + 15 + 15	4800	7200	12000	12000	12000	0	0	0	4795	23.5 / 21.3
	5400	8100	13500	13500	13500	0	0	0	5250	25.7 / 23.3
6 + 12 + 12 + 12 + 12	5333	10667	10667	10667	10667	0	0	0	4923	24.2 / 21.9
	6000	12000	12000	12000	12000	0	0	0	5400	26.3 / 24
6 + 12 + 12 + 12 + 15	5053	10105	10105	10105	12632	0	0	0	4859	23.8 / 21.6
	5684	11368	11368	11368	14211	0	0	0	5325	26 / 23.7
6 + 12 + 12 + 12 + 18	4800	9600	9600	9600	14400	0	0	0	4795	23.5 / 21.3
	5400	10800	10800	10800	16200	0	0	0	5250	25.7 / 23.3
6 + 12 + 12 + 15 + 15	4800	9600	9600	12000	12000	0	0	0	4795	23.5 / 21.3
	5400	10800	10800	13500	13500	0	0	0	5250	25.7 / 23.3
9 + 9 + 9 + 9 + 9	9000	9000	9000	9000	9000	0	0	0	4525	22.2 / 21
	10200	10200	10200	10200	10200	0	0	0	5327	26.2 / 23.8
9 + 9 + 9 + 9 + 12	9000	9000	9000	9000	12000	0	0	0	5052	24.8 / 22.5
	10125	10125	10125	10125	13500	0	0	0	5602	27.6 / 25
9 + 9 + 9 + 9 + 15	8471	8471	8471	8471	14118	0	0	0	4988	24.5 / 22.2
	9529	9529	9529	9529	15882	0	0	0	5502	26.9 / 24.5
9 + 9 + 9 + 9 + 18	8000	8000	8000	8000	16000	0	0	0	4923	24.2 / 21.9
	9000	9000	9000	9000	18000	0	0	0	5400	26.3 / 24
9 + 9 + 9 + 9 + 24	7200	7200	7200	7200	19200	0	0	0	4795	23.5 / 21.3
	8100	8100	8100	8100	21600	0	0	0	5250	25.7 / 23.3
9 + 9 + 9 + 12 + 12	8471	8471	8471	11294	11294	0	0	0	4988	24.5 / 22.2
	9529	9529	9529	12706	12706	0	0	0	5502	26.9 / 24.5
9 + 9 + 9 + 12 + 15	8000	8000	8000	10667	13333	0	0	0	4923	24.2 / 21.9
	9000	9000	9000	12000	15000	0	0	0	5400	26.3 / 24
9 + 9 + 9 + 12 + 18	7579	7579	7579	10105	15158	0	0	0	4859	23.8 / 21.6
	8526	8526	8526	11368	17053	0	0	0	5325	26 / 23.7
9 + 9 + 9 + 15 + 15	7579	7579	7579	12632	12632	0	0	0	4859	23.8 / 21.6
	8526	8526	8526	14211	14211	0	0	0	5325	26 / 23.7
9 + 9 + 9 + 15 + 18	7200	7200	7200	12000	14400	0	0	0	4795	23.5 / 21.3
	8100	8100	8100	13500	16200	0	0	0	5250	25.7 / 23.3
9 + 9 + 12 + 12 + 12	8000	8000	10667	10667	10667	0	0	0	4923	24.2 / 21.9
	9000	9000	12000	12000	12000	0	0	0	5400	26.3 / 24
9 + 9 + 12 + 12 + 15	7579	7579	10105	10105	12632	0	0	0	4859	23.8 / 21.6
	8526	8526	11368	11368	14211	0	0	0	5325	26 / 23.7
9 + 9 + 12 + 12 + 18	7200	7200	9600	9600	14400	0	0	0	4795	23.5 / 21.3
	8100	8100	10800	10800	16200	0	0	0	5250	25.7 / 23.3
9 + 9 + 12 + 15 + 15	7200	7200	9600	12000	12000	0	0	0	4795	23.5 / 21.3
	8100	8100	10800	13500	13500	0	0	0	5250	25.7 / 23.3
9 + 12 + 12 + 12 + 12	7579	10105	10105	10105	10105	0	0	0	4859	23.8 / 21.6
	8526	11368	11368	11368	11368	0	0	0	5325	26 / 23.7
9 + 12 + 12 + 12 + 15	7200	9600	9600	9600	12000	0	0	0	4795	23.5 / 21.3
	8100	10800	10800	10800	13500	0	0	0	5250	25.7 / 23.3
12 + 12 + 12 + 12 + 12	9600	9600	9600	9600	9600	0	0	0	4795	23.5 / 21.3
	10800	10800	10800	10800	10800	0	0	0	5250	25.7 / 23.3
6 + 6 + 6 + 6 + 6 + 6	6000	6000	6000	6000	6000	6000	0	0	3800	16.3 / 16
	7500	7500	7500	7500	7500	7500	0	0	4502	22 / 20.1
6 + 6 + 6 + 6 + 6 + 9	6000	6000	6000	6000	6000	9000	0	0	4100	17.9 / 17.8
	7154	7154	7154	7154	7154	10731	0	0	4777	23.4 / 21.3
6 + 6 + 6 + 6 + 6 + 12	6000	6000	6000	6000	6000	12000	0	0	4000	19.5 / 19.5
	6857	6857	6857	6857	6857	13714	0	0	5052	24.8 / 22.6
6 + 6 + 6 + 6 + 6 + 15	6000	6000	6000	6000	6000	15000	0	0	4525	22.2 / 21
	6800	6800	6800	6800	6800	17000	0	0	5327	26.2 / 23.8
6 + 6 + 6 + 6 + 6 + 18	6000	6000	6000	6000	6000	18000	0	0	5052	24.8 / 22.5
	6750	6750	6750	6750	6750	20250	0	0	5602	27.6 / 25

Specifications are subject to change without notice.  
© 2015 Mitsubishi Electric US, Inc.



# MXZ-8C48NAHZ OPERATIONAL PERFORMANCE, contd.

Operational Performance for Indoor Unit Combinations (Unit A + Unit B + Unit C + Unit D + Unit E + Unit F + Unit H)	Cooling Capacity Range (Btu/h)								Power Usage Range (W)	Current (208/230V)
	Heating Capacity Range (Btu/h)									
	Unit A	Unit B	Unit C	Unit D	Unit E	Unit F	Unit G	Unit H		
6 + 6 + 6 + 6 + 6 + 24	5333	5333	5333	5333	5333	21333	0	0	4923	24.2 / 21.9
	6000	6000	6000	6000	6000	24000	0	0	5400	26.3 / 24
6 + 6 + 6 + 6 + 6 + 30	4800	4800	4800	4800	4800	24000	0	0	4795	23.5 / 21.3
	5400	5400	5400	5400	5400	27000	0	0	5250	25.7 / 23.3
6 + 6 + 6 + 6 + 9 + 9	6000	6000	6000	6000	9000	9000	0	0	4000	19.5 / 19.5
	6857	6857	6857	6857	10286	10286	0	0	5052	24.8 / 22.6
6 + 6 + 6 + 6 + 9 + 12	6000	6000	6000	6000	9000	12000	0	0	4525	22.2 / 21
	6800	6800	6800	6800	10200	13600	0	0	5327	26.2 / 23.8
6 + 6 + 6 + 6 + 9 + 15	6000	6000	6000	6000	9000	15000	0	0	5052	24.8 / 22.5
	6750	6750	6750	6750	10125	16875	0	0	5602	27.6 / 25
6 + 6 + 6 + 6 + 9 + 18	5647	5647	5647	5647	8471	16941	0	0	4988	24.5 / 22.2
	6353	6353	6353	6353	9529	19059	0	0	5502	26.9 / 24.5
6 + 6 + 6 + 6 + 9 + 24	5053	5053	5053	5053	7579	20211	0	0	4859	23.8 / 21.6
	5684	5684	5684	5684	8526	22737	0	0	5325	26 / 23.7
6 + 6 + 6 + 6 + 12 + 12	6000	6000	6000	6000	12000	12000	0	0	5052	24.8 / 22.5
	6750	6750	6750	6750	13500	13500	0	0	5602	27.6 / 25
6 + 6 + 6 + 6 + 12 + 15	5647	5647	5647	5647	11294	14118	0	0	4988	24.5 / 22.2
	6353	6353	6353	6353	12706	15882	0	0	5502	26.9 / 24.5
6 + 6 + 6 + 6 + 12 + 18	5333	5333	5333	5333	10667	16000	0	0	4923	24.2 / 21.9
	6000	6000	6000	6000	12000	18000	0	0	5400	26.3 / 24
6 + 6 + 6 + 6 + 12 + 24	4800	4800	4800	4800	9600	19200	0	0	4795	23.5 / 21.3
	5400	5400	5400	5400	10800	21600	0	0	5250	25.7 / 23.3
6 + 6 + 6 + 6 + 15 + 15	5333	5333	5333	5333	13333	13333	0	0	4923	24.2 / 21.9
	6000	6000	6000	6000	15000	15000	0	0	5400	26.3 / 24
6 + 6 + 6 + 6 + 15 + 18	5053	5053	5053	5053	12632	15158	0	0	4859	23.8 / 21.6
	5684	5684	5684	5684	14211	17053	0	0	5325	26 / 23.7
6 + 6 + 6 + 6 + 18 + 18	4800	4800	4800	4800	14400	14400	0	0	4795	23.5 / 21.3
	5400	5400	5400	5400	16200	16200	0	0	5250	25.7 / 23.3
6 + 6 + 6 + 9 + 9 + 9	6000	6000	6000	9000	9000	9000	0	0	4525	22.2 / 21
	6800	6800	6800	10200	10200	10200	0	0	5327	26.2 / 23.8
6 + 6 + 6 + 9 + 9 + 12	6000	6000	6000	9000	9000	12000	0	0	5052	24.8 / 22.5
	6750	6750	6750	10125	10125	13500	0	0	5602	27.6 / 25
6 + 6 + 6 + 9 + 9 + 15	5647	5647	5647	8471	8471	14118	0	0	4988	24.5 / 22.2
	6353	6353	6353	9529	9529	15882	0	0	5502	26.9 / 24.5
6 + 6 + 6 + 9 + 9 + 18	5333	5333	5333	8000	8000	16000	0	0	4923	24.2 / 21.9
	6000	6000	6000	9000	9000	18000	0	0	5400	26.3 / 24
6 + 6 + 6 + 9 + 9 + 24	4800	4800	4800	7200	7200	19200	0	0	4795	23.5 / 21.3
	5400	5400	5400	8100	8100	21600	0	0	5250	25.7 / 23.3
6 + 6 + 6 + 9 + 12 + 12	5647	5647	5647	8471	11294	11294	0	0	4988	24.5 / 22.2
	6353	6353	6353	9529	12706	12706	0	0	5502	26.9 / 24.5
6 + 6 + 6 + 9 + 12 + 15	5333	5333	5333	8000	10667	13333	0	0	4923	24.2 / 21.9
	6000	6000	6000	9000	12000	15000	0	0	5400	26.3 / 24
6 + 6 + 6 + 9 + 12 + 18	5053	5053	5053	7579	10105	15158	0	0	4859	23.8 / 21.6
	5684	5684	5684	8526	11368	17053	0	0	5325	26 / 23.7
6 + 6 + 6 + 9 + 15 + 15	5053	5053	5053	7579	12632	12632	0	0	4859	23.8 / 21.6
	5684	5684	5684	8526	14211	14211	0	0	5325	26 / 23.7
6 + 6 + 6 + 9 + 15 + 18	4800	4800	4800	7200	12000	14400	0	0	4795	23.5 / 21.3
	5400	5400	5400	8100	13500	16200	0	0	5250	25.7 / 23.3
6 + 6 + 6 + 12 + 12 + 12	5333	5333	5333	10667	10667	10667	0	0	4923	24.2 / 21.9
	6000	6000	6000	12000	12000	12000	0	0	5400	26.3 / 24
6 + 6 + 6 + 12 + 12 + 15	5053	5053	5053	10105	10105	12632	0	0	4859	23.8 / 21.6
	5684	5684	5684	11368	11368	14211	0	0	5325	26 / 23.7
6 + 6 + 6 + 12 + 12 + 18	4800	4800	4800	9600	9600	14400	0	0	4795	23.5 / 21.3
	5400	5400	5400	10800	10800	16200	0	0	5250	25.7 / 23.3
6 + 6 + 6 + 12 + 15 + 15	4800	4800	4800	9600	12000	12000	0	0	4795	23.5 / 21.3
	5400	5400	5400	10800	13500	13500	0	0	5250	25.7 / 23.3
6 + 6 + 9 + 9 + 9 + 9	6000	6000	9000	9000	9000					



# MXZ-8C48NAHZ OPERATIONAL PERFORMANCE, contd.

Operational Performance for Indoor Unit Combinations (Unit A + Unit B + Unit C+ Unit D + Unit E + Unit F + Unit H)	Cooling Capacity Range (Btu/h)								Power Usage Range (W)	Current (208/230V)
	Heating Capacity Range (Btu/h)									
	Unit A	Unit B	Unit C	Unit D	Unit E	Unit F	Unit G	Unit H		
6 + 6 + 9 + 9 + 9 + 15	5333	5333	8000	8000	8000	13333	0	0	4923	24.2 / 21.9
	6000	6000	9000	9000	9000	15000	0	0	5400	26.3 / 24
6 + 6 + 9 + 9 + 9 + 18	5053	5053	7579	7579	7579	15158	0	0	4859	23.8 / 21.6
	5684	5684	8526	8526	8526	17053	0	0	5325	26 / 23.7
6 + 6 + 9 + 9 + 12 + 12	5333	5333	8000	8000	10667	10667	0	0	4923	24.2 / 21.9
	6000	6000	9000	9000	12000	12000	0	0	5400	26.3 / 24
6 + 6 + 9 + 9 + 12 + 15	5053	5053	7579	7579	10105	12632	0	0	4859	23.8 / 21.6
	5684	5684	8526	8526	11368	14211	0	0	5325	26 / 23.7
6 + 6 + 9 + 9 + 12 + 18	4800	4800	7200	7200	9600	14400	0	0	4795	23.5 / 21.3
	5400	5400	8100	8100	10800	16200	0	0	5250	25.7 / 23.3
6 + 6 + 9 + 9 + 15 + 15	4800	4800	7200	7200	12000	12000	0	0	4795	23.5 / 21.3
	5400	5400	8100	8100	13500	13500	0	0	5250	25.7 / 23.3
6 + 6 + 9 + 12 + 12 + 12	5053	5053	7579	10105	10105	10105	0	0	4859	23.8 / 21.6
	5684	5684	8526	11368	11368	11368	0	0	5325	26 / 23.7
6 + 6 + 9 + 12 + 12 + 15	4800	4800	7200	9600	9600	12000	0	0	4795	23.5 / 21.3
	5400	5400	8100	10800	10800	13500	0	0	5250	25.7 / 23.3
6 + 6 + 12 + 12 + 12 + 12	4800	4800	9600	9600	9600	9600	0	0	4795	23.5 / 21.3
	5400	5400	10800	10800	10800	10800	0	0	5250	25.7 / 23.3
6 + 9 + 9 + 9 + 9 + 9	5647	8471	8471	8471	8471	8471	0	0	4988	24.5 / 22.2
	6353	9529	9529	9529	9529	9529	0	0	5502	26.9 / 24.5
6 + 9 + 9 + 9 + 9 + 12	5333	8000	8000	8000	8000	10667	0	0	4923	24.2 / 21.9
	6000	9000	9000	9000	9000	12000	0	0	5400	26.3 / 24
6 + 9 + 9 + 9 + 9 + 15	5053	7579	7579	7579	7579	12632	0	0	4859	23.8 / 21.6
	5684	8526	8526	8526	8526	14211	0	0	5325	26 / 23.7
6 + 9 + 9 + 9 + 9 + 18	4800	7200	7200	7200	7200	14400	0	0	4795	23.5 / 21.3
	5400	8100	8100	8100	8100	16200	0	0	5250	25.7 / 23.3
6 + 9 + 9 + 9 + 12 + 12	5053	7579	7579	7579	10105	10105	0	0	4859	23.8 / 21.6
	5684	8526	8526	8526	11368	11368	0	0	5325	26 / 23.7
6 + 9 + 9 + 9 + 12 + 15	4800	7200	7200	7200	9600	12000	0	0	4795	23.5 / 21.3
	5400	8100	8100	8100	10800	13500	0	0	5250	25.7 / 23.3
6 + 9 + 9 + 12 + 12 + 12	4800	7200	7200	9600	9600	9600	0	0	4795	23.5 / 21.3
	5400	8100	8100	10800	10800	10800	0	0	5250	25.7 / 23.3
9 + 9 + 9 + 9 + 9 + 9	8000	8000	8000	8000	8000	8000	0	0	4923	24.2 / 21.9
	9000	9000	9000	9000	9000	9000	0	0	5400	26.3 / 24
9 + 9 + 9 + 9 + 9 + 12	7579	7579	7579	7579	7579	10105	0	0	4859	23.8 / 21.6
	8526	8526	8526	8526	8526	11368	0	0	5325	26 / 23.7
9 + 9 + 9 + 9 + 9 + 15	7200	7200	7200	7200	7200	12000	0	0	4795	23.5 / 21.3
	8100	8100	8100	8100	8100	13500	0	0	5250	25.7 / 23.3
9 + 9 + 9 + 9 + 12 + 12	7200	7200	7200	7200	9600	9600	0	0	4795	23.5 / 21.3
	8100	8100	8100	8100	10800	10800	0	0	5250	25.7 / 23.3
6 + 6 + 6 + 6 + 6 + 6 + 6	6000	6000	6000	6000	6000	6000	6000	0	4000	19.5 / 19.5
	6857	6857	6857	6857	6857	6857	6857	6857	0	5052
6 + 6 + 6 + 6 + 6 + 6 + 12	6000	6000	6000	6000	6000	6000	12000	0	5052	24.8 / 22.5
	6750	6750	6750	6750	6750	6750	13500	0	5602	27.6 / 25
6 + 6 + 6 + 6 + 6 + 6 + 15	5647	5647	5647	5647	5647	5647	14118	0	4988	24.5 / 22.2
	6353	6353	6353	6353	6353	6353	15882	0	5502	26.9 / 24.5
6 + 6 + 6 + 6 + 6 + 6 + 18	5333	5333	5333	5333	5333	5333	16000	0	4923	24.2 / 21.9
	6000	6000	6000	6000	6000	6000	18000	0	5400	26.3 / 24
6 + 6 + 6 + 6 + 6 + 6 + 24	4800	4800	4800	4800	4800	4800	19200	0	4795	23.5 / 21.3
	5400	5400	5400	5400	5400	5400	21600	0	5250	25.7 / 23.3
6 + 6 + 6 + 6 + 6 + 9 + 9	6000	6000	6000	6000	6000	9000	9000	0	5052	24.8 / 22.5
	6750	6750	6750	6750	6750	10125	10125	0	5602	27.6 / 25
6 + 6 + 6 + 6 + 6 + 9 + 12	5647	5647	5647	5647	5647	8471	11294	0	4988	24.5 / 22.2
	6353	6353	6353	6353	6353	9529	12706	0	5502	26.9 / 24.5
6 + 6 + 6 + 6 + 6 + 9 + 15	5333	5333	5333	5333	5333	8000	13333	0	4923	24.2 / 21.9
	6000	6000	6000	6000	6000	9000	15000	0	5400	26.3 / 24
6 + 6 + 6 + 6 + 6 + 9 + 18	5053	5053	5053	5053	5053	7579	15158	0	4859	23.8 / 21.6
	5684	5684	5684	5684	5684	8526	17053	0	5325	26 / 23.7
6 + 6 + 6 + 6 + 6 + 12 + 12	5333	5333	5333	5333	5333	10667	10667	0	4923	24.2 / 21.9
	6000	6000	6000	6000	6000	12000	12000	0	5400	26.3 / 24

# MXZ-8C48NAHZ OPERATIONAL PERFORMANCE, contd.

Operational Performance for Indoor Unit Combinations (Unit A + Unit B + Unit C+ Unit D + Unit E + Unit F + Unit H)	Cooling Capacity Range (Btu/h)								Power Usage Range (W)	Current (208/230V)
	Heating Capacity Range (Btu/h)									
	Unit A	Unit B	Unit C	Unit D	Unit E	Unit F	Unit G	Unit H		
6 + 6 + 6 + 6 + 6 + 12 + 15	5053	5053	5053	5053	5053	10105	12632	0	4859	23.8 / 21.6
	5684	5684	5684	5684	5684	11368	14211	0	5325	26 / 23.7
6 + 6 + 6 + 6 + 6 + 12 + 18	4800	4800	4800	4800	4800	9600	14400	0	4795	23.5 / 21.3
	5400	5400	5400	5400	5400	10800	16200	0	5250	25.7 / 23.3
6 + 6 + 6 + 6 + 6 + 15 + 15	4800	4800	4800	4800	4800	12000	12000	0	4795	23.5 / 21.3
	5400	5400	5400	5400	5400	13500	13500	0	5250	25.7 / 23.3
6 + 6 + 6 + 6 + 9 + 9 + 9	5647	5647	5647	5647	8471	8471	8471	0	4988	24.5 / 22.2
	6353	6353	6353	6353	9529	9529	9529	0	5502	26.9 / 24.5
6 + 6 + 6 + 6 + 9 + 9 + 12	5333	5333	5333	5333	8000	8000	10667	0	4923	24.2 / 21.9
	6000	6000	6000	6000	9000	9000	12000	0	5400	26.3 / 24
6 + 6 + 6 + 6 + 9 + 9 + 15	5053	5053	5053	5053	7579	7579	12632	0	4859	23.8 / 21.6
	5684	5684	5684	5684	8526	8526	14211	0	5325	26 / 23.7
6 + 6 + 6 + 6 + 9 + 9 + 18	4800	4800	4800	4800	7200	7200	14400	0	4795	23.5 / 21.3
	5400	5400	5400	5400	8100	8100	16200	0	5250	25.7 / 23.3
6 + 6 + 6 + 6 + 9 + 12 + 12	5053	5053	5053	5053	7579	10105	10105	0	4859	23.8 / 21.6
	5684	5684	5684	5684	8526	11368	11368	0	5325	26 / 23.7
6 + 6 + 6 + 6 + 9 + 12 + 15	4800	4800	4800	4800	7200	9600	12000	0	4795	23.5 / 21.3
	5400	5400	5400	5400	8100	10800	13500	0	5250	25.7 / 23.3
6 + 6 + 6 + 6 + 12 + 12 + 12	4800	4800	4800	4800	9600	9600	9600	0	4795	23.5 / 21.3
	5400	5400	5400	5400	10800	10800	10800	0	5250	25.7 / 23.3
6 + 6 + 6 + 9 + 9 + 9 + 9	5333	5333	5333	8000	8000	8000	8000	0	4923	24.2 / 21.9
	6000	6000	6000	9000	9000	9000	9000	0	5400	26.3 / 24
6 + 6 + 6 + 9 + 9 + 9 + 12	5053	5053	5053	7579	7579	7579	10105	0	4859	23.8 / 21.6
	5684	5684	5684	8526	8526	8526	11368	0	5325	26 / 23.7
6 + 6 + 6 + 9 + 9 + 9 + 15	4800	4800	4800	7200	7200	7200	12000	0	4795	23.5 / 21.3
	5400	5400	5400	8100	8100	8100	13500	0	5250	25.7 / 23.3
6 + 6 + 6 + 9 + 9 + 12 + 12	4800	4800	4800	7200	7200	9600	9600	0	4795	23.5 / 21.3
	5400	5400	5400	8100	8100	10800	10800	0	5250	25.7 / 23.3
6 + 6 + 9 + 9 + 9 + 9 + 9	5053	5053	7579	7579	7579	7579	7579	0	4859	23.8 / 21.6
	5684	5684	8526	8526	8526	8526	8526	0	5325	26 / 23.7
6 + 6 + 9 + 9 + 9 + 9 + 12	4800	4800	7200	7200	7200	7200	9600	0	4795	23.5 / 21.3
	5400	5400	8100	8100	8100	8100	10800	0	5250	25.7 / 23.3
6 + 9 + 9 + 9 + 9 + 9 + 9	4800	7200	7200	7200	7200	7200	7200	0	4795	23.5 / 21.3
	5400	8100	8100	8100	8100	8100	8100	0	5250	25.7 / 23.3
6 + 6 + 6 + 6 + 6 + 6 + 6 + 6	6000	6000	6000	6000	6000	6000	6000	6000	5052	24.8 / 22.5
	6750	6750	6750	6750	6750	6750	6750	6750	5602	27.6 / 25
6 + 6 + 6 + 6 + 6 + 6 + 6 + 9	5647	5647	5647	5647	5647	5647	5647	8471	4988	24.5 / 22.2
	6353	6353	6353	6353	6353	6353	6353	9529	5502	26.9 / 24.5
6 + 6 + 6 + 6 + 6 + 6 + 6 + 12	5333	5333	5333	5333	5333	5333	5333	10667	4923	24.2 / 21.9
	6000	6000	6000	6000	6000	6000	6000	12000	5400	26.3 / 24
6 + 6 + 6 + 6 + 6 + 6 + 6 + 15	5053	5053	5053	5053	5053	5053	5053	12632	4859	23.8 / 21.6
	5684	5684	5684	5684	5684	5684	5684	14211	5325	26 / 23.7
6 + 6 + 6 + 6 + 6 + 6 + 6 + 18	4800	4800	4800	4800	4800	4800	4800	14400	4795	23.5 / 21.3
	5400	5400	5400	5400	5400	5400	5400	16200	5250	25.7 / 23.3
6 + 6 + 6 + 6 + 6 + 6 + 9 + 9	5333	5333	5333	5333	5333	5333	8000	8000	4923	24.2 / 21.9
	6000	6000	6000	6000	6000	6000	9000	9000	5400	26.3 / 24
6 + 6 + 6 + 6 + 6 + 6 + 9 + 12	5053	5053	5053	5053	5053	5053	7579	10105	4859	23.8 / 21.6
	5684	5684	5684	5684	5684	5684	8526	11368	5325	26 / 23.7
6 + 6 + 6 + 6 + 6 + 6 + 9 + 15	4800	4800	4800	4800	4800	4800	7200	12000	4795	23.5 / 21.3
	5400	5400	5400	5400	5400	5400	8100	13500	5250	25.7 / 23.3
6 + 6 + 6 + 6 + 6 + 6 + 12 + 12	4800	4800	4800	4800	4800	4800	9600	9600	4795	23.5 / 21.3
	5400	5400	5400	5400	5400	5400	10800	10800	5250	25.7 / 23.3
6 + 6 + 6 + 6 + 6 + 9 + 9 + 9	5053	5053	5053	5053	5053	7579	7579	7579	4859	23.8 / 21.6
	5684	5684	5684	5684	5684	8526	8526	8526	5325	26 / 23.7
6 + 6 + 6 + 6 + 6 + 9 + 9 + 12	4800	4800	4800	4800	4800	7200	7200	9600	4795	23.5 / 21.3
	5400	5400	5400	5400	5400	8100	8100	10800	5250	25.7 / 23.3
6 + 6 + 6 + 6 + 9 + 9 + 9 + 9	4800	4800	4800	4800	7200	7200	7200	7200	4795	23.5 / 21.3
	5400	5400	5400	5400	8100	8100	8100	8100	5250	25.7 / 23.3

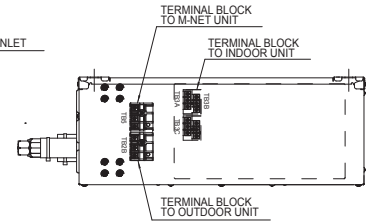
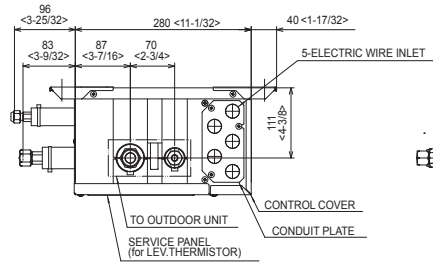
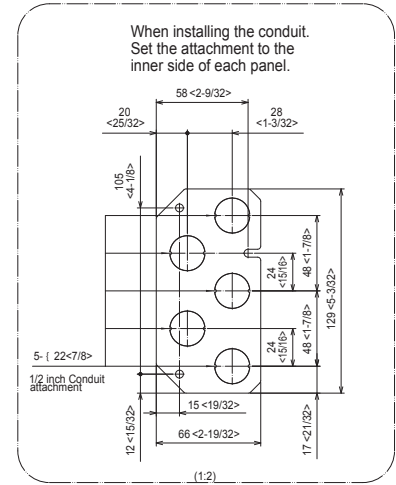
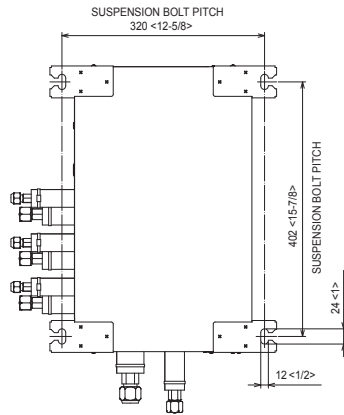
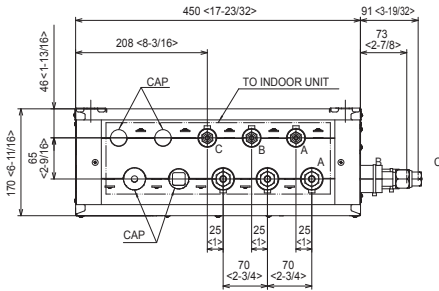
# DIMENSIONS: PAC-MKA30BC AND PAC-MKA50BC BRANCH BOXES

## PAC-MKA30BC

Unit: mm <in>

SUSPENSION BOLT : W3/8(M10)  
REFRIGERANT PIPE FLARED CONNECTION

	A	B	C		TO OUTDOOR UNIT
LIQUID PIPE	1/4F	1/4F	1/4F		3/8F
GAS PIPE	3/8F	3/8F	3/8F		5/8F



## PAC-MKA50BC

Unit: mm <in>

SUSPENSION BOLT : W3/8(M10)  
REFRIGERANT PIPE FLARED CONNECTION

	A	B	C	D	E	TO OUTDOOR UNIT
LIQUID PIPE	1/4F	1/4F	1/4F	1/4F	1/4F	3/8F
GAS PIPE	3/8F	3/8F	3/8F	3/8F	1/2F	5/8F

