



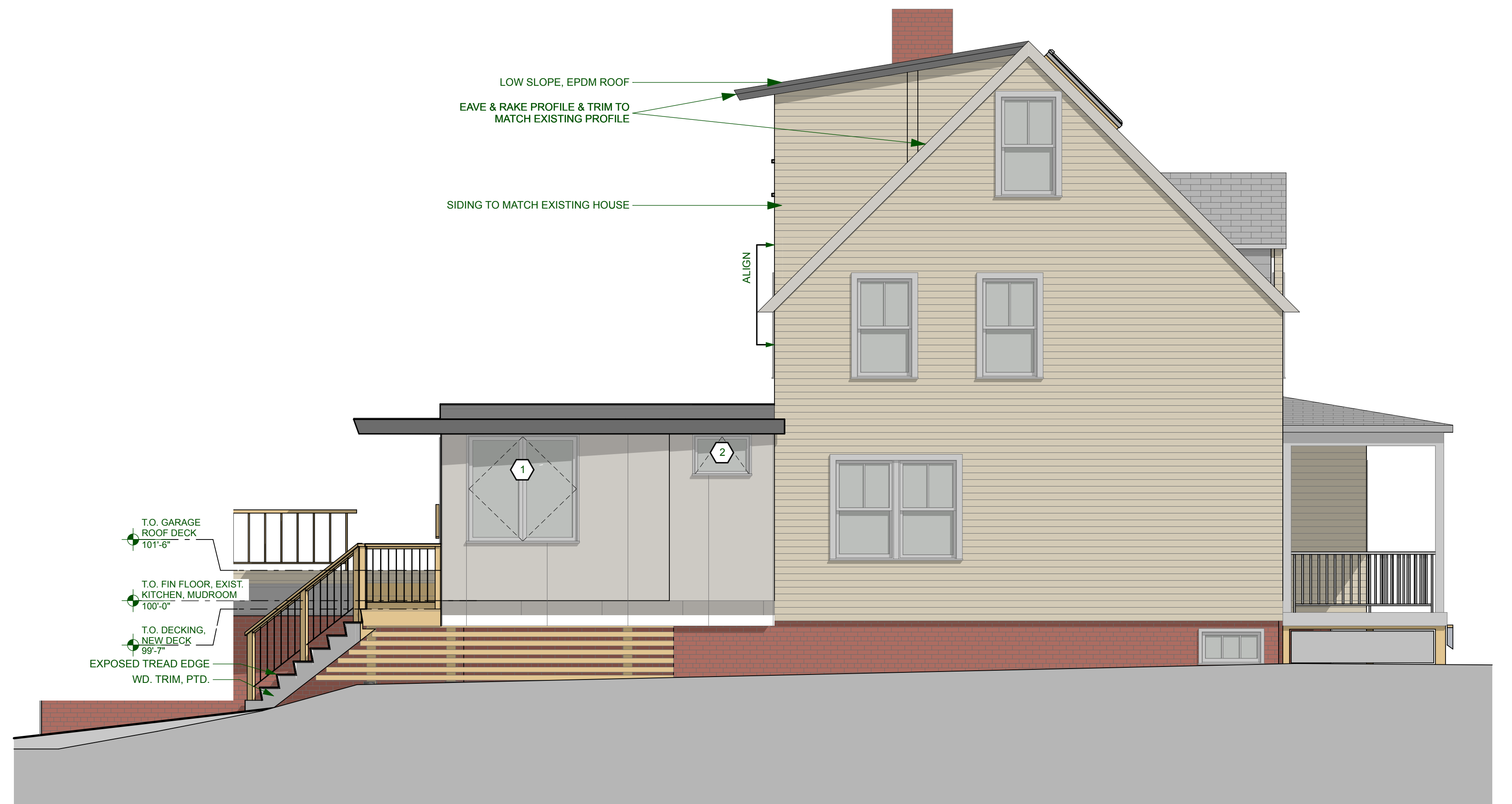
1 SOUTH ELEVATION
SCALE: 1/4" = 1'-0"



2 EAST ELEVATION
SCALE: 1/4" = 1'-0"



3 NORTH ELEVATION
SCALE: 1/4" = 1'-0"



4 WEST ELEVATION
SCALE: 1/4" = 1'-0"

NOT FOR CONSTRUCTION

FOR PERMIT