



Reviewed for Code Compliance
Permitting and Inspections Department
Approved with Conditions

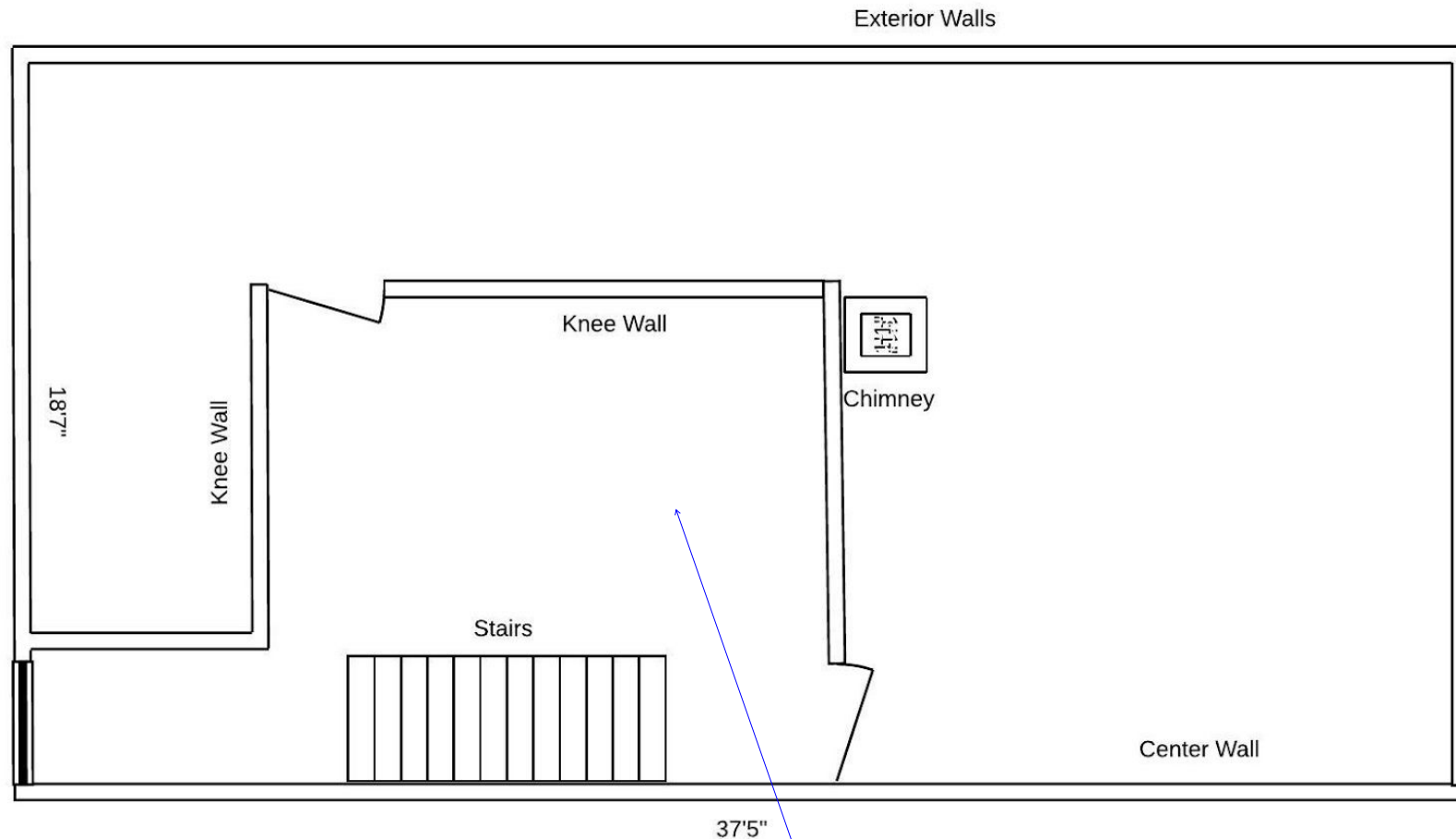
02/13/2019

174 Beacon Street Attic Space

Floor 4' x 8' x 3/4" UL

Walls 2x4 16" O.C.

Center Wall 5/8 sheetrock 2 layers



Not approved for habitable space.



Reviewed for Code Compliance
Permitting and Inspections Department
Approved with Conditions

02/13/2019

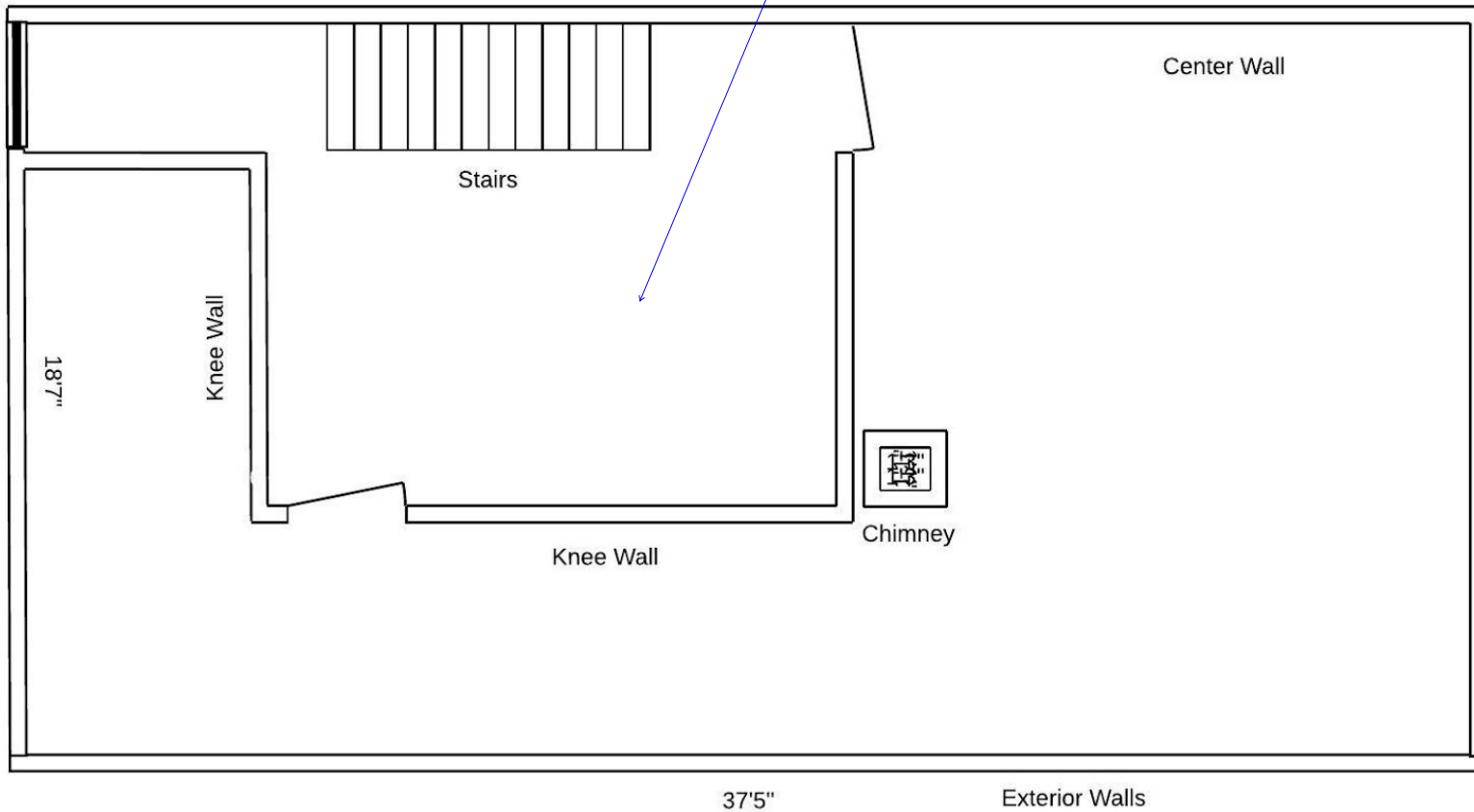
176 Beacon Street Attic Space

Floor 4' x 8' x 3/4" UL

Walls 2x4 16" O.C.

Center Wall 5/8 sheetrock 2 layers

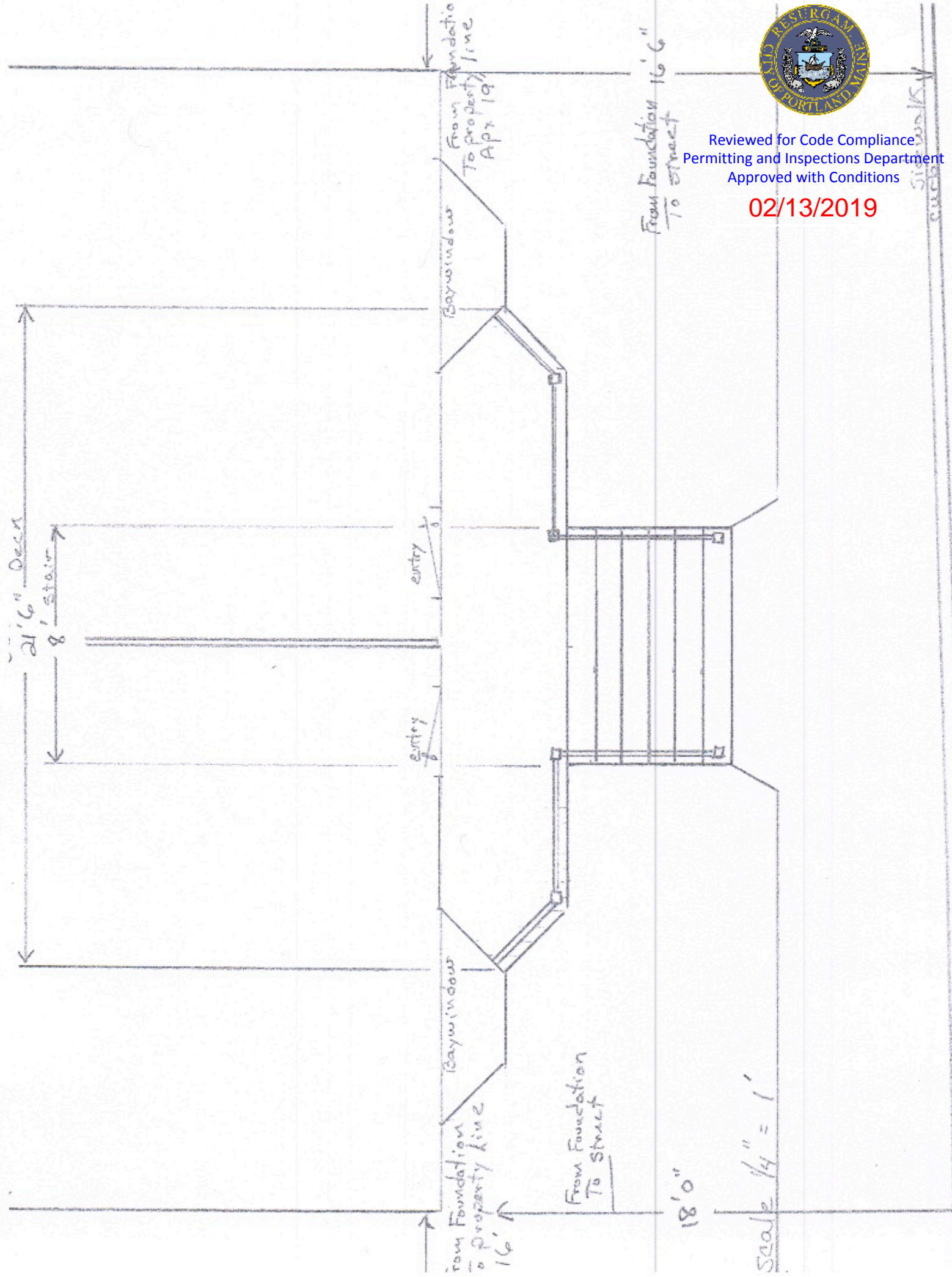
Not approved for habitable space.





Reviewed for Code Compliance
Permitting and Inspections Department
Approved with Conditions

02/13/2019



Pre-cast Tapered concrete Pier
 Top 6" Bottom 10" x 4' Long Placed 4' Deep

Framing 2x8 PT

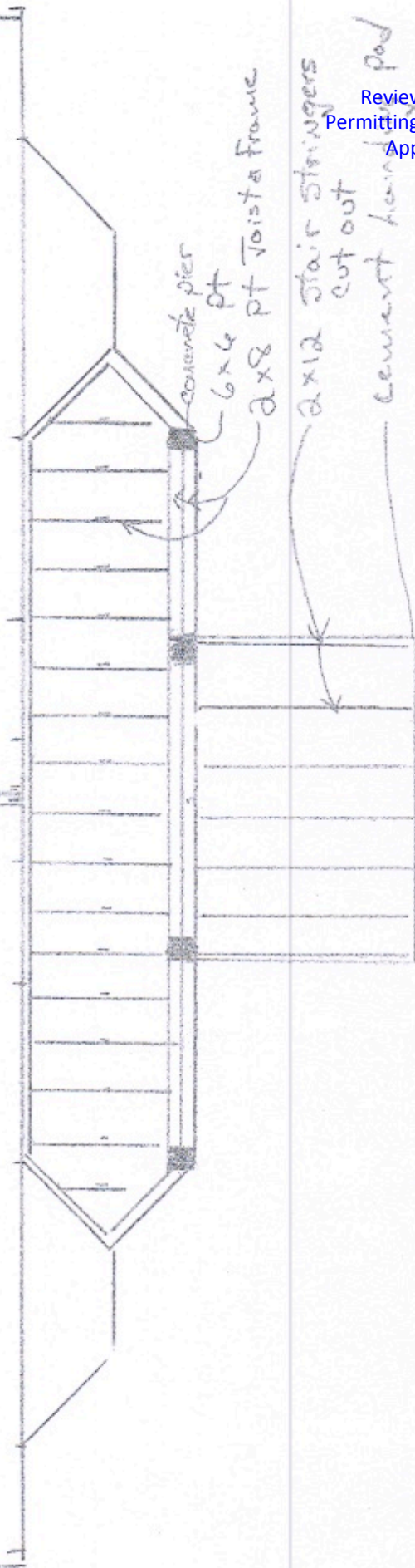
GRK $\frac{5}{8}$ x 5/8 lags To Attach Ledger To Building @ 12"

Ice & water Type Flashing Between Building
& Decking

Joist 2x8, 16" oc, 4' span Mechanical Fasteners

Decking $\frac{3}{4}$ x 6" composite

Attach post with mechanical fasteners



concrete pier
 6x6 pt
 2x8 pt Joist frame
 2x12 Stair Stringers
 cut out
 cement handrail pad



Reviewed for Code Compliance
 Permitting and Inspections Department
 Approved with Conditions

02/13/2019



Reviewed for Code Compliance
Permitting and Inspections Department
Approved with Conditions

02/13/2019

