

**EG - Gas Boiler  
Weil-McLain**

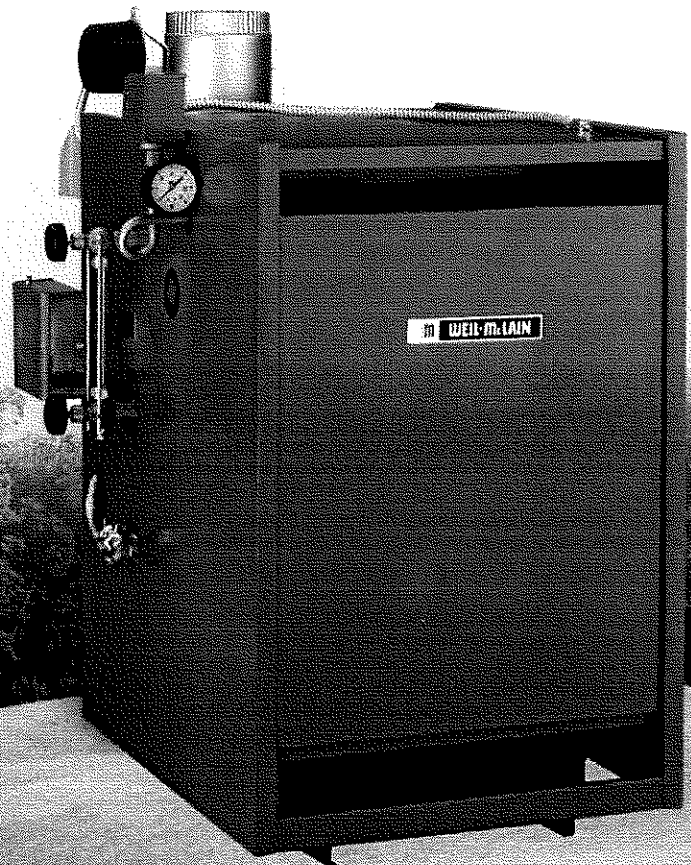
Water or Steam,  
With Tankless Heater Option  
Natural Draft  
NAT'L or LP  
MBH: 75-300  
Avg. Eff.: 83%

Net Load Range  
Hot Water  
55,000 to 209,000 BTU/Hr.  
Steam  
196 to 750 Sq. FT.

- DURABLE AND HIGH EFFICIENT
- EASY TO INSTALL AND SERVICE
- MADE WITH WEIL-McLAIN QUALITY

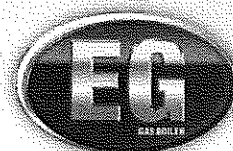
**APPLICATIONS INCLUDE:**

Residential  
Light Commercial  
Multiple Boilers  
Indirect-fired Water Heating  
*... And Much More*



**WEIL-McLAIN**

[www.weil-mclain.com](http://www.weil-mclain.com)



Model	CSA Input (MBH)	% DOE Seasonal Efficiency (AFUE)						Net I-B-R Ratings***					Approx. Shipping Weight (Lbs)
		Intermittent Ignition w/Damper Natural Gas (PIDN)		Standing Pilot w/Damper Natural Gas (SPDN)		Standing Pilot w/Damper Propane (SPDL)		DOE Heating Capacity (MBH)**	Steam (MBH)	Water (MBH)	Steam (Sq. Ft.)	I-B-R Chimney Size	
		Water	Steam	Water	Steam	Water	Steam						
EG-30-*	75	84.3	83	82.2	81	84.2	82.9	62	47	55	196	5" I.D. x 20'	380
EG-35-*	100	83.6	82.9	82	81.3	83.7	82.5	83	62	73	258	5" I.D. x 20'	380
EG-40-*	125	84	82.9	82.5	81.5	84.3	83.2	104	78	91	325	6" I.D. x 20'	465
EG-45-*	150	83.5	82.9	82.4	81.6	84	83	125	94	110	392	6" I.D. x 20'	465
EG-50-*	175	83.8	82.8	82.9	81.9	84.4	83.7	145	109	128	454	7" I.D. x 20'	545
EG-55-*	200	83.8	82.8	82.5	81.9	84.2	83.5	167	125	146	521	7" I.D. x 20'	545
EG-65-*	250	84	83	82.6	82	84	82.8	209	157	183	654	8" I.D. x 20'	630
EG-75-*	300	-	-	-	-	-	-	240	180	209	750	8" I.D. x 20'	695

**Notes:**

Add to boiler number "W" for water, "S" for steam. Add "SPD" to designator for boiler with standing pilot. Add "PID" to designator for boiler with intermittent electronic ignition system. For SPD models add "N" for natural gas, "L" for propane (propane not available for PID). Add "T" to designator for boiler with tankless heater openings. Add "P" to prefix for factory-assembled fire-tested package boiler (steam only sizes 30 thru 55). Example PEG-30-S-SPDN.  
 \*\* Based on standard test procedures prescribed by the United States Department of Energy.  
 \*\*\* Net I-B-R ratings are based on net installed radiation of sufficient quantity for the requirements of the building and nothing need be added for normal piping and pick-up. Water ratings are based on a piping and pick-up allowance of 115; steam ratings on an allowance of 1333. An additional allowance should be made for unusual piping and pick-up loads.  
 NOTE: EG boiler is CSA design certified for installation on non-combustible flooring only. Tested for 50 PSI working pressure. Not available for millvolt systems.

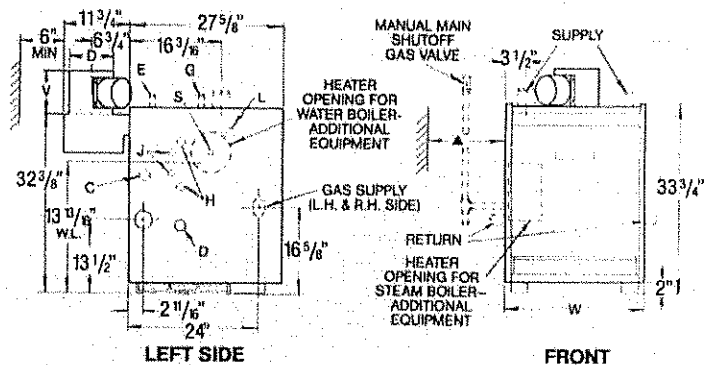
**Dimensions**

Model	Number & Size		Dimensions-Inches			Minimum Recommended Pipe Sizes			
	Supply (NPT)	Return (NPT)	D	V	W	Gas Connection Size* Natural & Propane	Forced Water Supply & Return**	Steam Riser & Header***	Steam Equalizer
EG-30	2-3"	2-2 1/2"	5"	6"	17"	1/2"	1"	2"	1 1/2"
EG-35	2-3"	2-2 1/2"	5"	6"	17"	1/2"	1"	2"	1 1/2"
EG-40	2-3"	2-2 1/2"	6"	6 1/2"	21 1/4"	1/2"	1 1/4"	2 1/2"	1 1/2"
EG-45	2-3"	2-2 1/2"	6"	6 1/2"	21 1/4"	1/2"	1 1/4"	2 1/2"	1 1/2"
EG-50	2-3"	2-2 1/2"	7"	9"	25 1/2"	1/2"	1 1/4"	2 1/2"	1 1/2"
EG-55	2-3"	2-2 1/2"	7"	9"	25 1/2"	1/2"	1 1/2"	3"	1 1/2"
EG-65	2-3"	2-2 1/2"	8"	9 1/2"	29 3/4"	3/4"	1 1/2"	3"	1 1/2"
EG-75	2-3"	2-2 1/2"	8"	9 1/2"	34"	3/4"	2"	3"	1 1/2"

\* Sizes shown are gas connection sizes. Gas piping from meter to boiler to be sized according to local utility requirements.  
 \*\* All supply and return sizes are based on a 20°F temperature rise through the boiler.  
 \*\*\* 24" minimum from water line to header.

Location	Size	Steam	Water
C	3/4"	Electrode-Type-Low-Water Cutoff	Plugged
D	3/4"	Drain	Drain
E	3/4"	Safety Valve	Safety Relief Valve
G	3/4"	Plugged	Piping to Compression Tank or Auto. Air Vent
H	1/4"	Gauge Glass and/or Low-Water Cutoff	Plugged
J*	3/8"	Try Cock Tappings	-
L	1/4"	Syphon, Pressure Gauge, High-Limit Control	Combination Pressure-Temperature Gauge
S Steam	1 1/2"	Skim Tapping	-
S Water	3/4"	-	Limit Control

\* Available only on special request.



**Standard and Optional Equipment**

**Standard Equipment:**

- Limited Lifetime Warranty on Water Boiler
- Sections; 10 Years On Steam Boiler Sections
- Factory-Assembled Section Block
- Insulated Extended Jacket
- Horizontal to Vertical Draft Hood
- Automatic Vent Damper (additional for EG-75)
- Combination Gas Valve for 24 Volt
- Non-Linting Pilot Burner
- Stainless Steel Burners
- Electrical Junction Box
- Spill Switch
- Rollout Thermal Fuse Element
- Water Boilers Only:**
- Built-in-Air Separator
- 30 PSI ASME Relief Valve (boiler sections tested for 50 PSI working pressure)
- Combination Pressure-Temperature Gauge
- High-Limit Control
- 40VA Transformer With Receptacle for Circulator Relay
- Plug-in Circulator Relay

**Steam Boilers Only:**

- 15 PSI ASME Relief Valve (boiler sections tested for 15 PSI working pressure)
- High-Limit Pressure Control
- Low Water Cutoff-Electrode Type
- 40VA Transformer
- Steam Pressure Gauge
- Syphon
- Gauge Cocks and Glass

**High Efficiency model-SPD:**

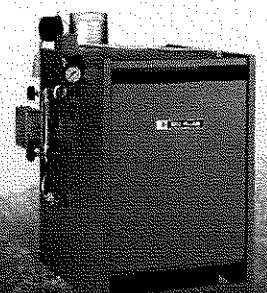
- Constant Burning, Thermally Supervised Pilot System
- Thermocouple

**Highest Efficiency model-PID:**

- Intermittent Electronic Ignition System with Weil-McLain UCM Universal Ignition Control Module

**Optional Equipment:**

- Package Steam Boiler-Factory-Assembled and Fire-Tested (P-EG-30 thru 55 only)
- Left End Section with Openings for Tankless Heaters
- Tankless Heaters, Heater Cover Plates, and Controls
- Automatic Vent Damper for EG-75 with Electronic Ignition
- Gas Conversion Kits



In the interest of continual improvements in product and performance, Weil-McLain reserves the right to change specifications without notice.

## Analysis for Your Home Safety



Deteriorating Chimney



Staining from Leaking Condensation



Unlined Chimney

- Staining from Leaking Condensation**  
THE CONDENSATION IN YOUR CHIMNEY IS SEEPING THROUGH TO THE INTERIOR OF YOUR HOME, OR YOUR CHIMNEY EXTERIOR, AND CREATING COSTLY DAMAGE.
- Disintegrating Chimney Structure**  
ACIDIC MOISTURE GOES THROUGH FREEZE AND THAW PERIODS WITH EXPANSION AND CONTRACTION CREATING CRACKS IN YOUR MORTAR AND FLUE TILES.
- Poor Draft**  
YOU HAVE AN IMPROPER FLUE SIZE MATCHED TO YOUR HEATING APPLIANCE.
- Tight Clearance**  
YOU HAVE INADEQUATE CLEARANCE TO THE ROOF FINISHING OF YOUR HOME.
- Damaged Chimney Structure**  
WILL ALLOW CARBON MONOXIDE, SMOKE, AND FIRE TO ENTER YOUR HOME.
- Down-Drafting & Smoke**  
IF YOU HAVE AN IMPROPERLY UNID FLUE, YOU CAN EXPECT AN UNSTEADY DRAFT LEADING TO A DOWNWARD FLOW BRINGING SMOKE INTO YOUR HOME.

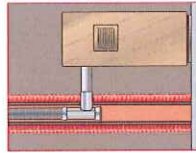
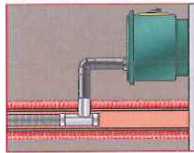
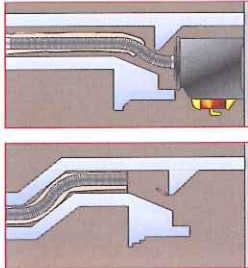
## How Safe is Your Home?

Your local A-Flex dealer



## ONE SOLUTION for every application

By having your chimney relined with the A-Flex 316L Stainless Steel Liner, you will not only increase the efficiency of your fuel burning appliance, but more importantly, you can rest assured that your chimney is safe for use.



Having your chimney relined with PRIMER-MIX™ provides insulation, WRAP™ for water seals, and allows for easy installation and removal.



PROUDLY MANUFACTURED IN THE UNITED STATES

WE'VE BEEN MANUFACTURING 316L STAINLESS STEEL AND ALUMINUM CHIMNEY LINER SYSTEMS SINCE 1922. WE'VE DEVELOPED A LARGE VARIETY OF SIZES, TYPES AND CUSTOM CHIMNEY LINERS, WE'RE READY TO FULFILL YOUR CHIMNEY DREAMS.



Realizing the only way to truly control a product is to manufacture, has invested in the industry by becoming the premier manufacturer of stainless steel liners and components to match.

## for Your Safety and Comfort

