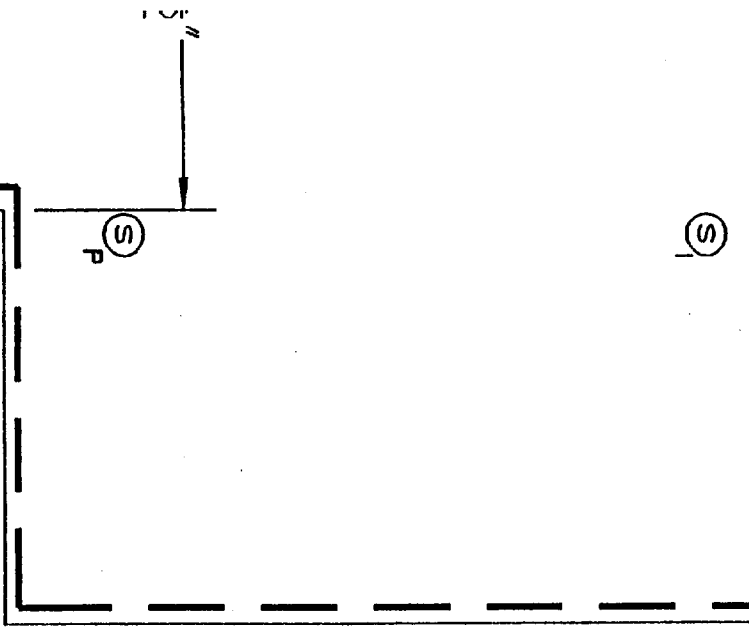


⑤

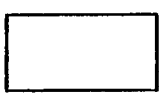


A

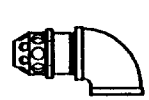
ABORT SWITCH

P

MANUAL PULL STATION



"ARIES" CONTROL PANEL



NOZZLE 180°

A-106

ALL PIPING TO BE EXPOSED INSIDE SPACE.

ALL SCREW'D FITTINGS SHALL BE

ALL GROOVED FITTINGS SHALL BE

ALL RISERS SHALL BE SECURED CLAMPS, A.T.R., FM-PLATES.

ALL HANGING MATERIAL WILL BE RISER CLAMPS WITH 3/8" A.T.R. AND

ALL PIPING SHALL BE HELD TIGHT BEAMS AND ABOVE 16" SPIRAL D

ALL PERSONNEL WORKING IN THE SPACE SHALL RECEIVE TRAINING COMPLETION OF INSTALLATION.

**tyco**  
**Fire & Security**

**SimplexGinnell**  
EXECUTIVE OFFICES - HOUSTON, TEXAS, USA

LOCAL OFFICE: WESTBROOK, ME.

APPROVALS

OUT  IN  OUT  IN  OUT  IN

REVISIONS

SYSTEM INFO

| SYSTEM NAME/NO. | SYSTEM TYPE | VALVE SIZE | SYSTEM AREA |
|-----------------|-------------|------------|-------------|
| #1              | 600LB       | 3"         |             |
| #2              | 600LB       | 3"         |             |
| #3              | 200LB       | 2"         |             |

CONTRACT NAME:  
TIME WARNER CABLE  
340 CUMBERLAND AVE.  
PORTLAND, ME.

CONTRACT WITH: TIME WARNER CABLE-- DON MOWATT

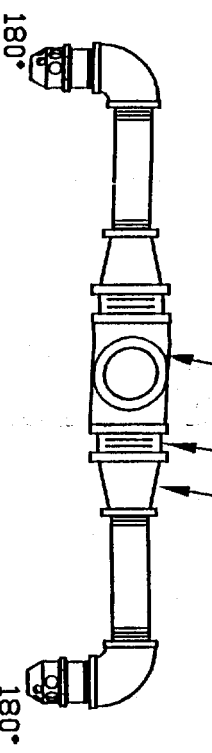
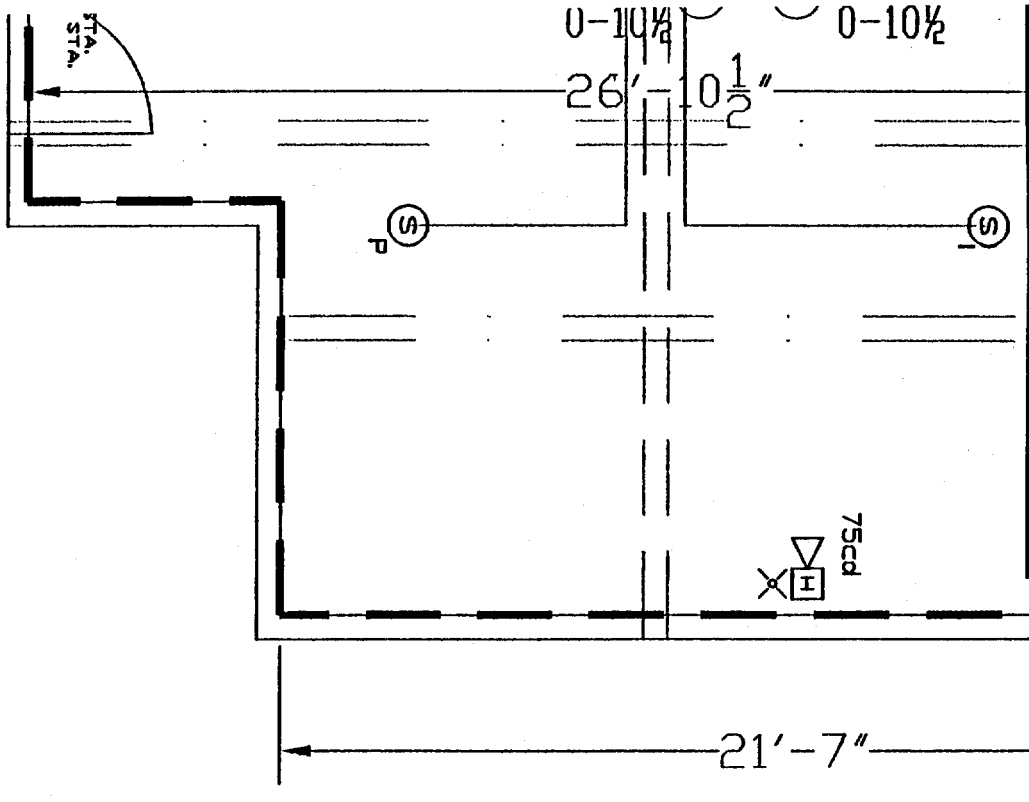
DESCRIPTION: KIDDE FM-200

REAL AREA NAME/NO. HAZARD CLASSIFICATION

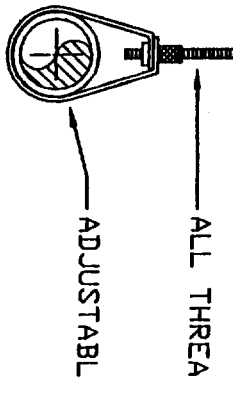
CALCULATION DESIGN DATA

SEE CALC SHEETS

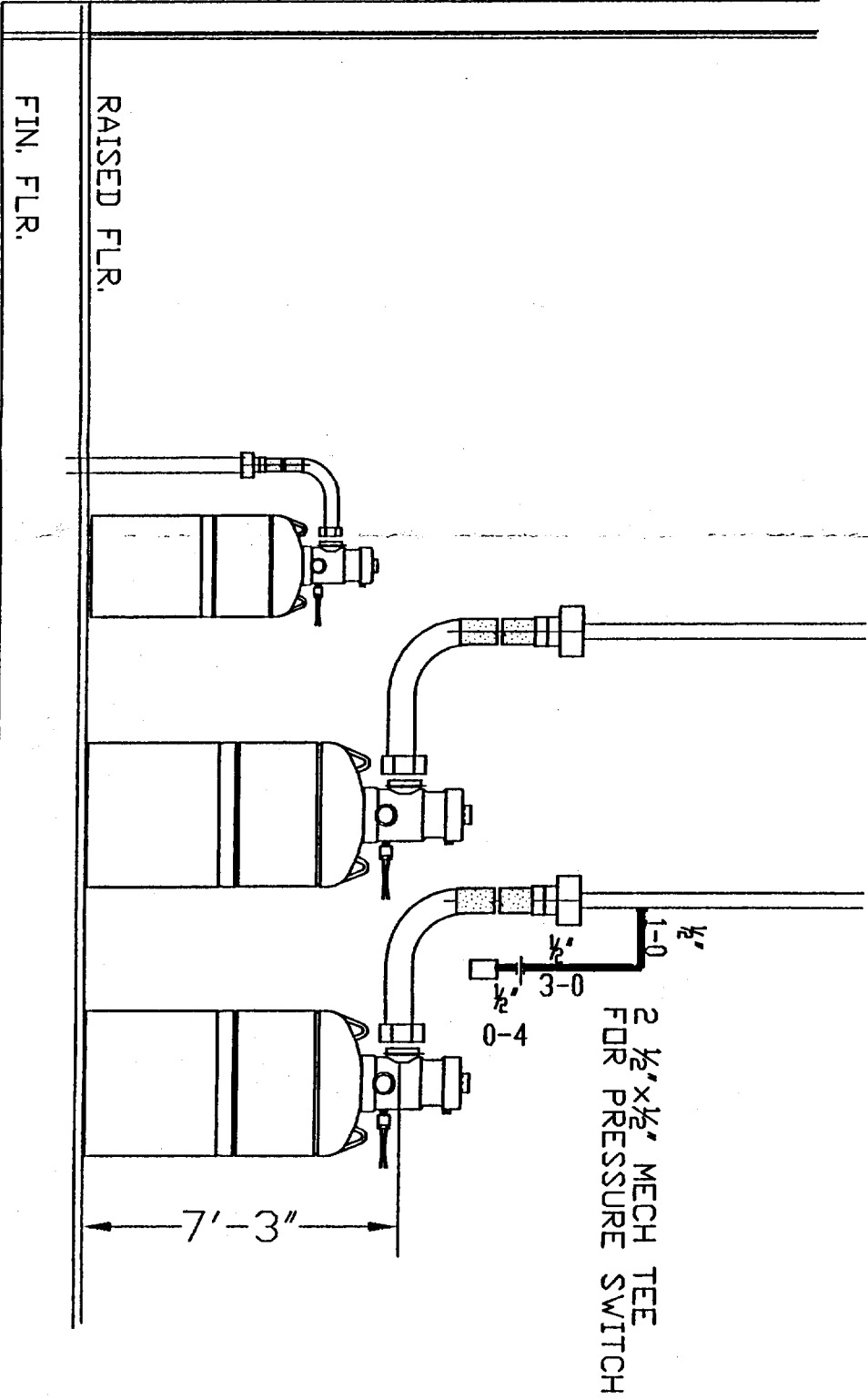
ACTION RESULTS  
 Q. FT. \_\_\_\_\_  
 HGT. = 12'-3 1/2"  
 12'-3 1/2" = 15,795 CU. FT.  
 REDUCTIONS = 205 CU. FT.  
 CU.FT. - 205 CU.FT. = 15,590 TOTAL VOLUME  
 X .0315 = 491lbs. FM-200



FM-200 NOZZLE DETAIL  
 N.T.S.

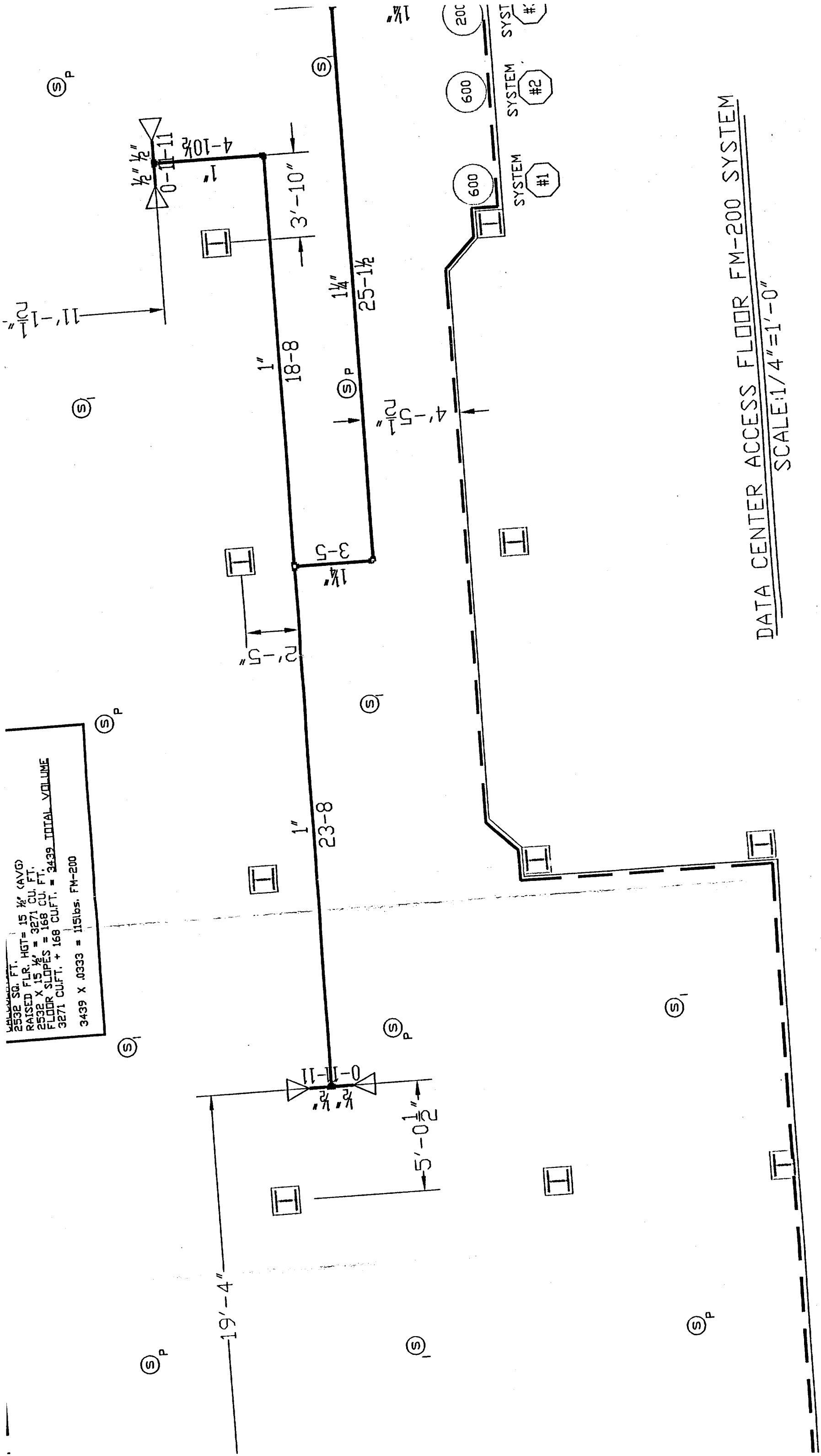


SELF DRILLING ANCHOR, ROD



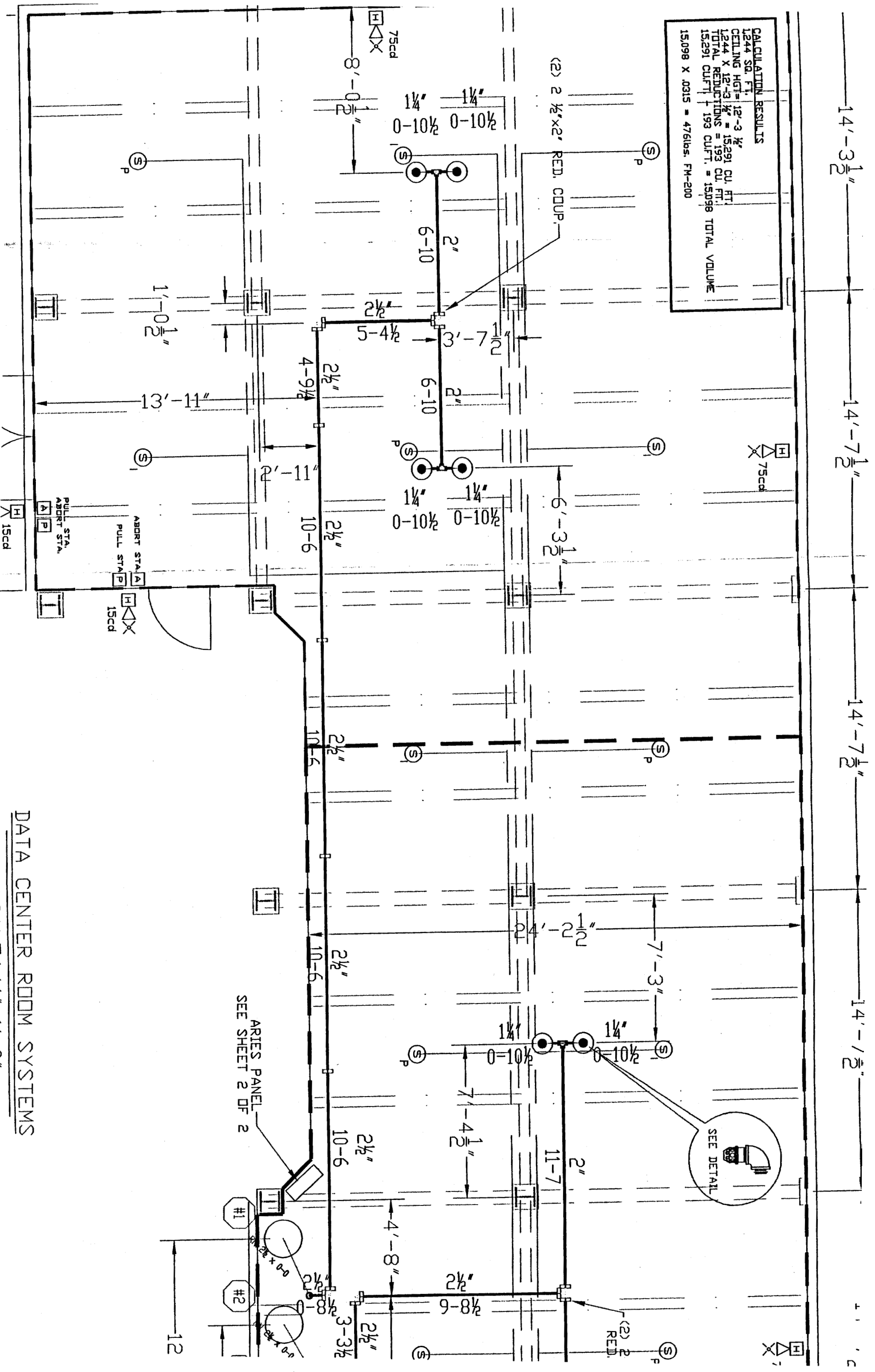
TANK DETAIL  
 N.T.S.

2532 SQ. FT.  
 RAISED FLR. HGT = 15 1/2" (AVG)  
 2532 X 15 1/2" = 3271 CU. FT.  
 FLOOR SLOPES = 168 CU. FT.  
 3271 CU.FT. + 168 CU.FT. = 3439 TOTAL VOLUME  
 3439 X .0333 = 115lbs. FM-200



DATA CENTER ACCESS FLOOR FM-200 SYSTEM  
 SCALE: 1/4" = 1'-0"

| CALCULATION RESULTS               |                 |
|-----------------------------------|-----------------|
| 1244                              | SQ. FT.         |
| CEILING HGT = 12'-3 1/2"          |                 |
| 1244 X 12'-3 1/2"                 | = 15291 CU. FT. |
| TOTAL REDUCTIONS = 193 CU. FT.    |                 |
| 15291 CU.FT. - 193 CU.FT. = 15098 | TOTAL VOLUME    |
| 15098 X .0315 = 476lbs.           | FM-200          |



DATA CENTER ROOM SYSTEMS  
 CHAIN 1/11-1'-N"