

NEW

HOLMAN BLS FORMS & SYSTEMS (2017) 783-0430

BACK

PROFILE

6'X16' DECK

346 Woodford Street  
Portland ME.

EXISTING  
HOUSE

Railings 42" Height to top of 2x4 Railings

2" x 4" - Cross Rails P.T.

2" x 2" P.T. Spindles 5' oc - Attached w/ 3" GRK screws

4" x 4" Railing P.T. 6" oc POST \* Connected to Joist Ban with 1/2" through Bolt & washers thru

P.T. 2" x 8" 16" oc Joists + Band

2" x 10" (3) Girder P.T.

6" x 6" Post P.T.

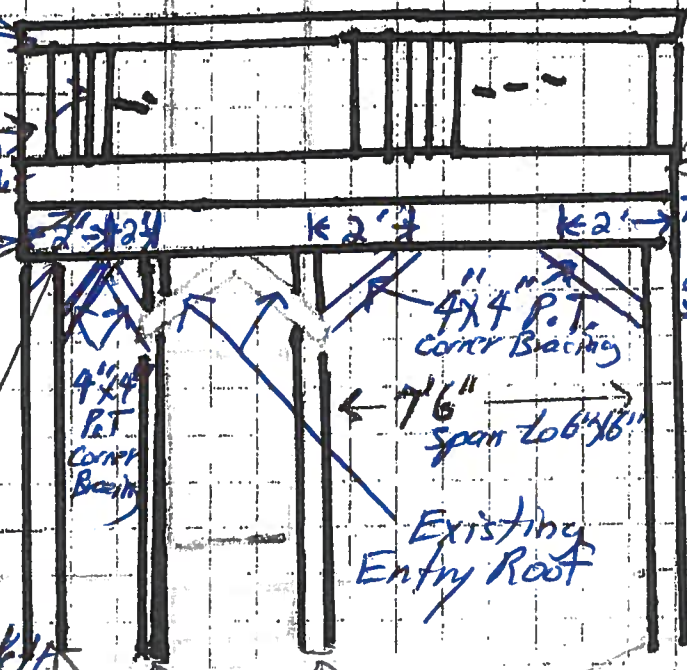
1st Floor Entry  
New Railings  
Existing Stairs -  
2" x 4" P.T. - Top Rail  
2" x 2" P.T. Balusters  
4" x 4" P.T. Post -

Post & Rail Details

6" x 6" P.T. Post / Simpson Top Bracket A  
to 3" x 10" Girder

5" oc.  
6" oc. Maximum

\* Joist Details  
Simpson Hurricane clips  
Every Floor Joist  
to Girder. Joist  
are top loaded into  
Girder (3-2x10s) P.T.



\* Lateral load connections  
per IRC 302.2.2.3  
see Figure A2 Attached  
\* Ledger Fastening  
per IRC 302.2.2  
see Figure A2 Attached  
Joist Ban 2" x 10" P.T.  
Attached w/ 1/2" x 4"  
(32" o.c.) Lags  
\* To be screwed into  
house Joist Ban or  
Floor Joist  
\* Attached w/  
Joist hangers +  
Simpson non shearing  
nails. w/ 2" x 2"  
P.T. Ledger with  
3" GRK screws

\* Attachment - Bottom of 6" x 6" P.T. Post  
Simpson 6" x 6" Base Bracket's Bolted  
Post to pre-cast piers w/ Concr Bolt  
NOT TO SCALE