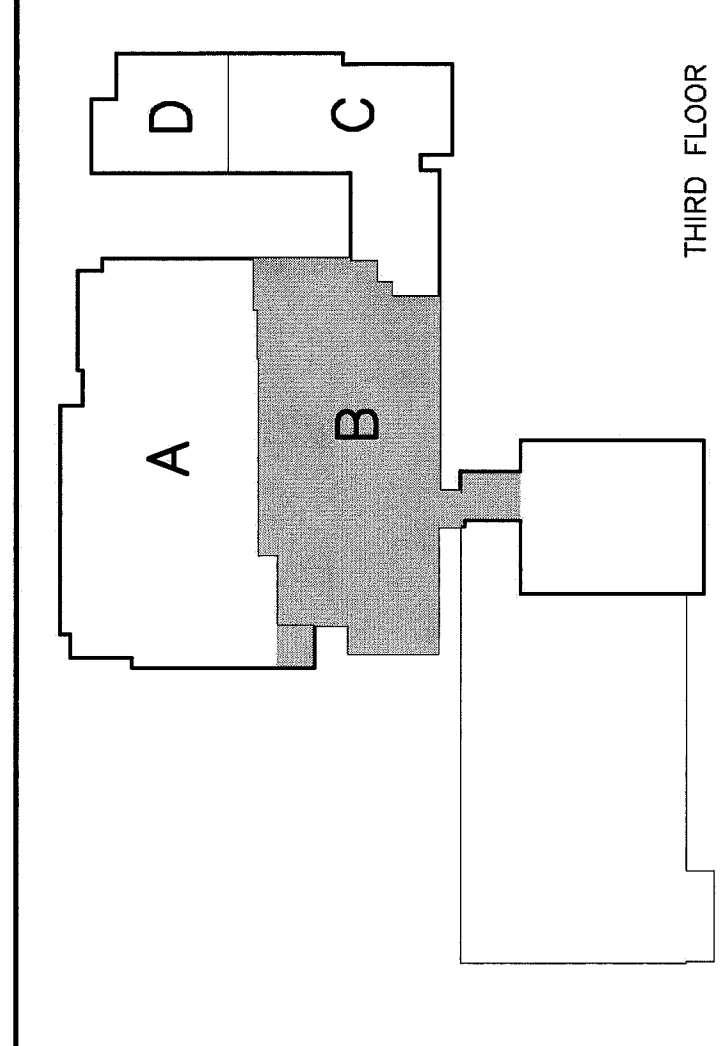
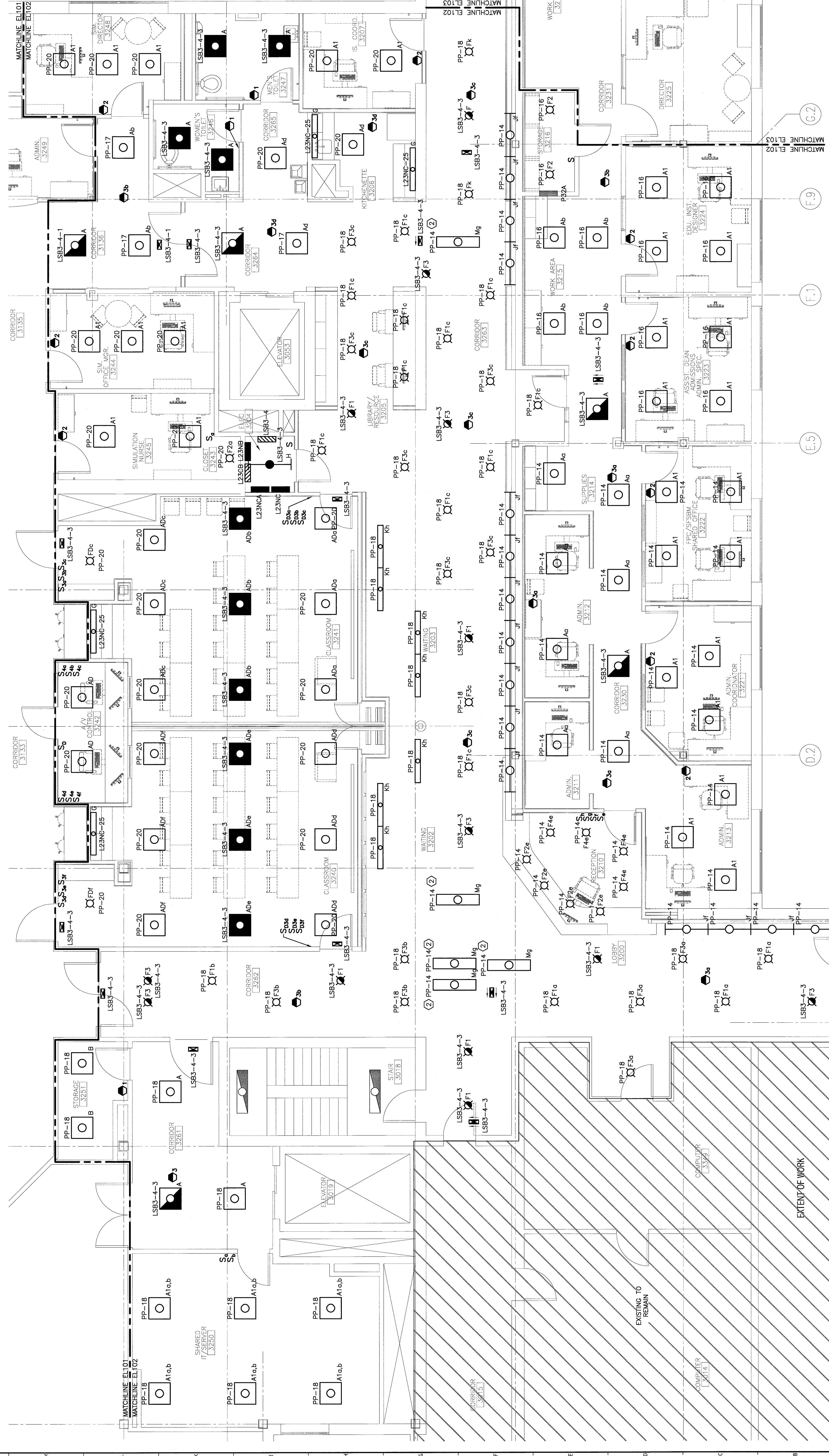


**NOTES:**

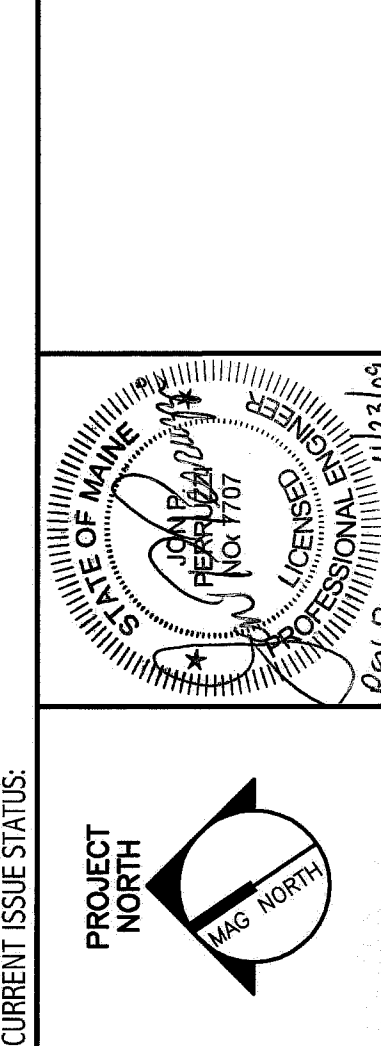
- SEE SHEET E-001 FOR LEGEND AND GENERAL NOTES.
- WHERE SWITCHES AND MOTION SENSORS ARE SHOWN IN THE SAME ROOM, THE SWITCHES ENABLE THE MOTION SENSORS.
- FOR LOCATION OF PANELBOARD PP, SEE EL103.

**KEYED NOTE:**

- EXISTING LIGHT FIXTURE, REUSED SWITCH, S<sub>0</sub> CONTROLS THE MIDDLE COMPARTMENT READING LIGHT; SWITCH S<sub>1</sub> CONTROLS THE END COMPARTMENT AMBIENT LIGHT NEAR THE REAR END.
- LIGHT FIXTURE TO BE CHAIN SUSPENDED 1'-0" ABOVE CEILING.



F18 KEY PLAN	
ISSUED FOR CONSTRUCTION	4-24-09
DESCRIPTION	DATE
REV. 0	4-24-09
REV. 1	DATE



**ISSUED FOR CONSTRUCTION**  
4-24-09

CURRENT ISSUE STATUS

**PROJECT NORTH**

144 Main Street, Suite 418  
Portland, Maine 04104  
Tel: (207) 772-8066  
Fax: (207) 772-6073  
www.mrmc.com

**SMART**  
ARCHITECTURE  
ENGINEERING  
PLANNING  
INTERIOR DESIGN  
COMMISSIONING

**MAINE MEDICAL CENTER**  
OFFICE OF MEDICAL EDUCATION  
PORTLAND, MAINE

**THIRD FLOOR AREA B**  
LIGHTING PLAN

SCALE	DATE	4-24-09
1/4"=1'-0"	DATE	4-24-09
PROJECT MANAGER	GRAPHIC SCALE	1"=10'-0"
DESIGNER	CHECKS	VP
DATE REVISION	PP	SHEET No.
SMART CODE	EL102-08023	EL102
PROJECT No.	08093-030	

**A1 THIRD FLOOR PLAN**  
1/4"=1'-0"