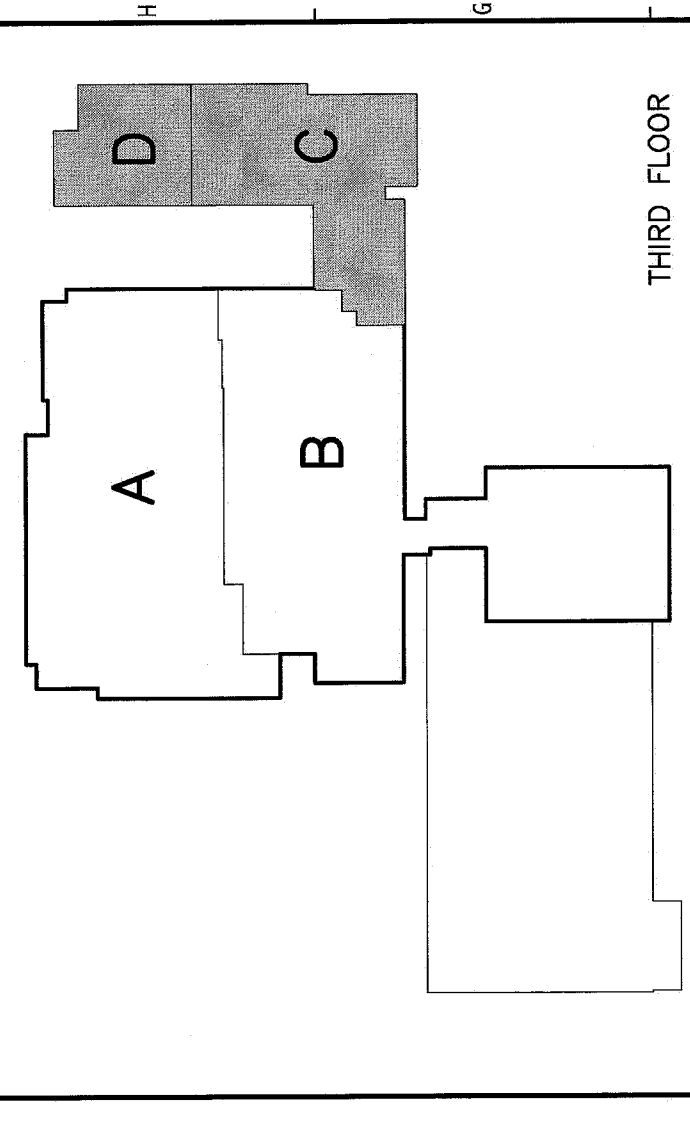
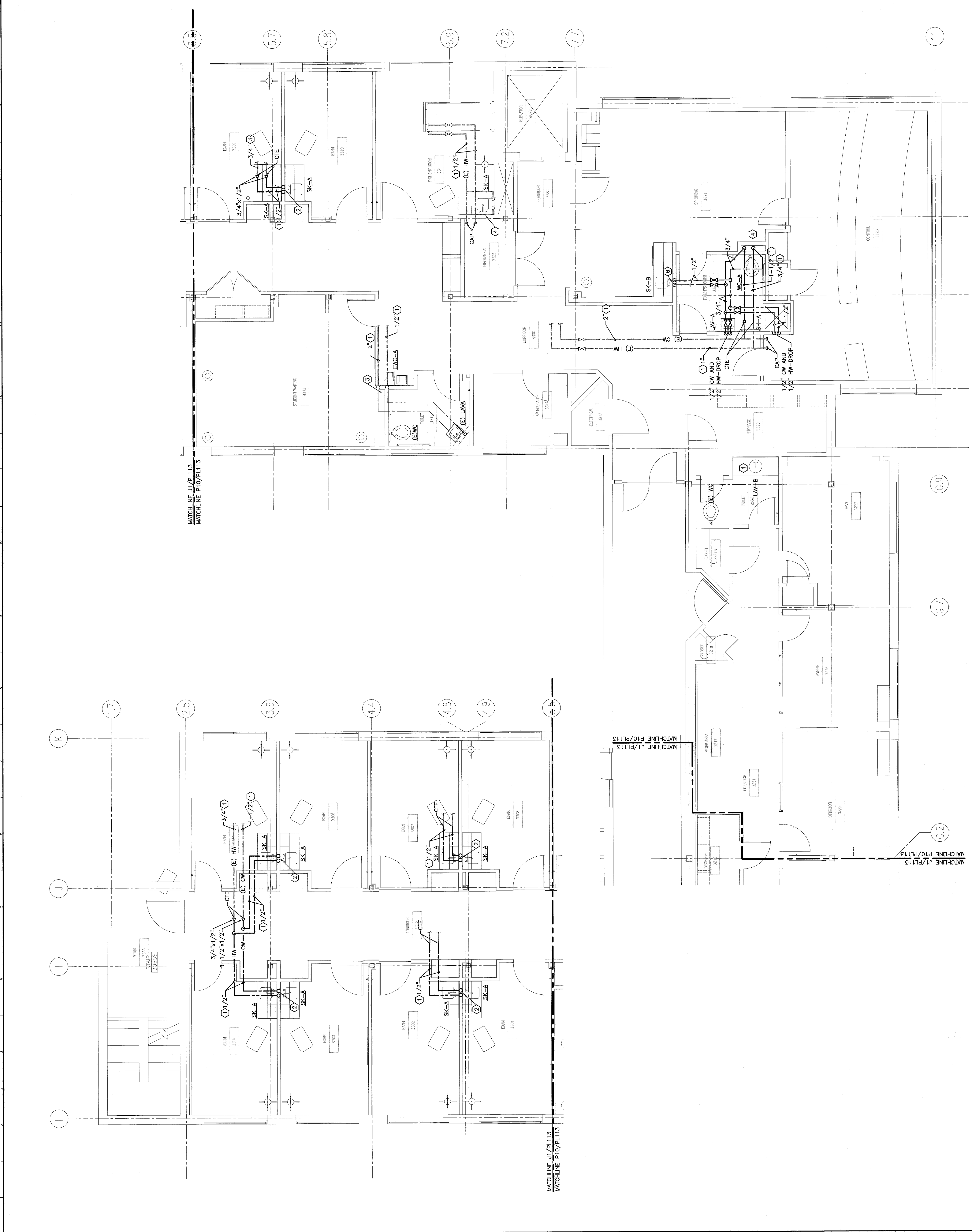


NOTE:

- SEE SHEET P101 FOR LEGEND AND ABBREVIATIONS.
- REFER TO DRAWING A-001 FOR DEFINITION OF ALTERNATES.

KEYED NOTES:

- PIPING LOCATED IN CEILING OF FLOOR BELOW.
- 1/2" CW AND 1/2" HW-UP IN WALL. ROUTE 1/2" CW AND 1/2" HW-EACH TO EACH SKC-A.
- ROUTE 1/2" CW TO EXISTING CW IN CHASE AND CONNECT.
- CONNECT EXISTING CW AND HW SUPPLIES TO NEW FIXTURE.
- 1-1/2" CW AND 3/4" HW-UP IN WALL. CONNECT 1" CW TO WCA-A. PROVIDE A WATER HAMMER ARRESTOR WITH SHUT-OFF VALVE-ACCESSIBLE. 3/4" HW-RISE IN CHASE.
- 1/2" CW AND 1/2" HW-DROP. ROUTE 1/2" CW AND 1/2" HW-EACH TO SKC-B. ROUTE 1/2" CW THRU 1/2" DUAL CHECK BACKFLOW PREVENTER AND FILTER AND CONNECT TO OWNER SUPPLIED COFFEE MAKER.

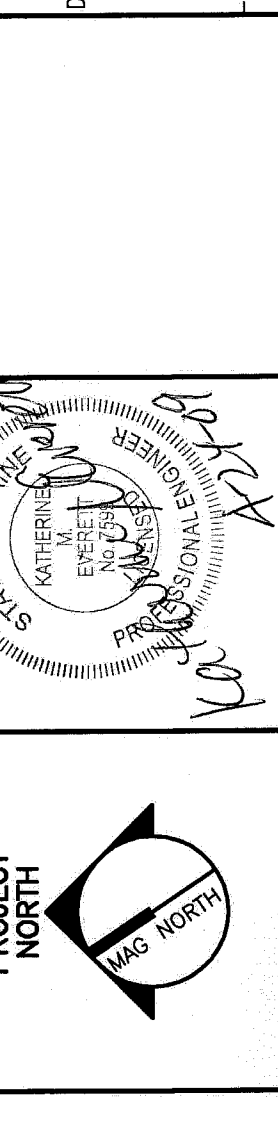


F18 KEY PLAN

REV.	ISSUED FOR CONSTRUCTION DESCRIPTION	DATE
0		4-24-09

ISSUED FOR CONSTRUCTION
4-24-09

CURRENT ISSUE STATUS:



ARCHITECTURE
ENGINEERING
PLANNING
INTERIOR DESIGN
COMMISSIONING

SMRT
MAINE MEDICAL CENTER
OFFICE OF MEDICAL EDUCATION
PORTLAND, MAINE

THIRD FLOOR AREA C & D
SUPPLY PIPING PLAN

SCALE:	1/4"=1'-0"	DATE:	4-24-09
PROJECT NUMBER:	00693-00	CIP GRAPHIC SCALE:	0'
JOB C/P NUMBER:		DATE:	
DATE OF RECORD:		TIME:	
SHEET C/D FILE:	PL113-00093	SHEET NO.:	PL113
PROJECT NO.:	00693-00		

A1 THIRD FLOOR PLAN
1/4"=1'-0"