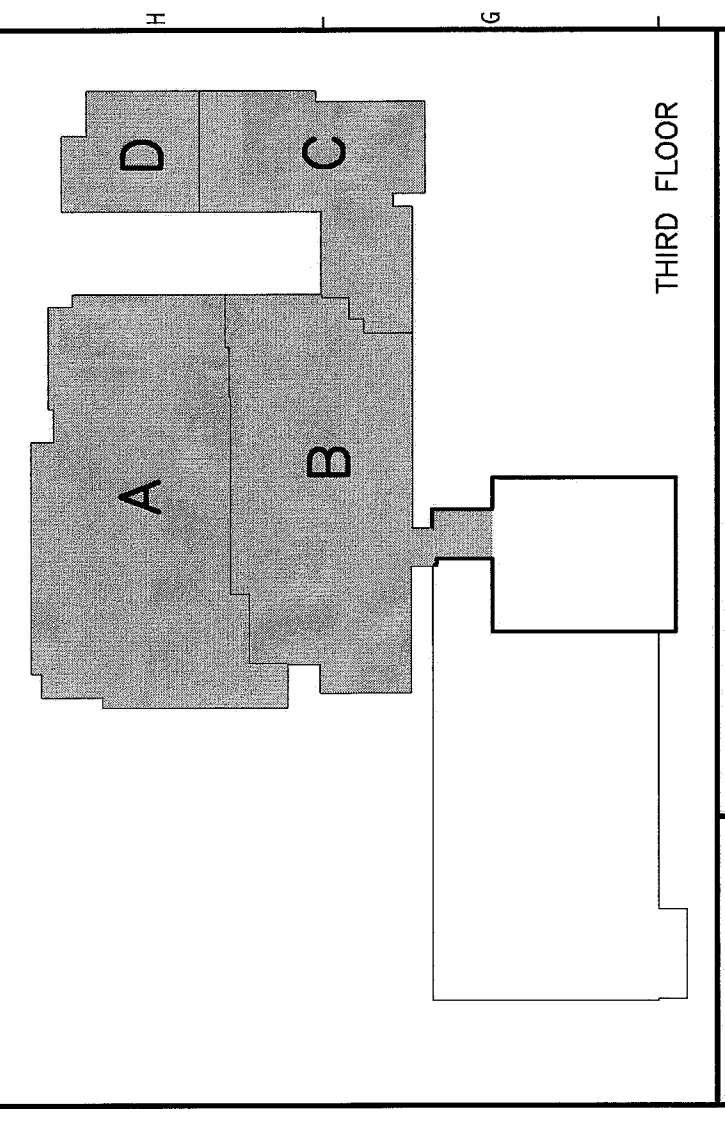
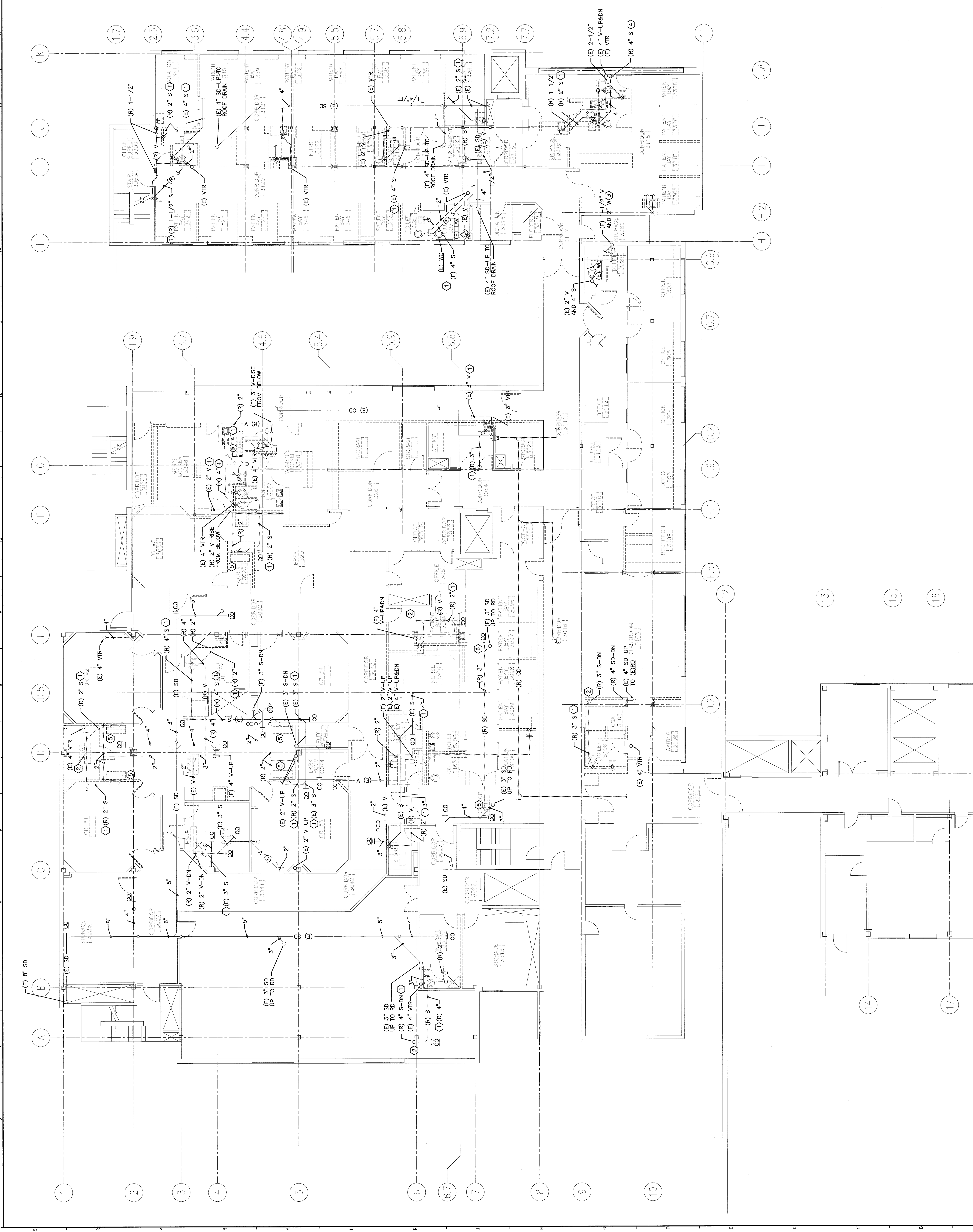


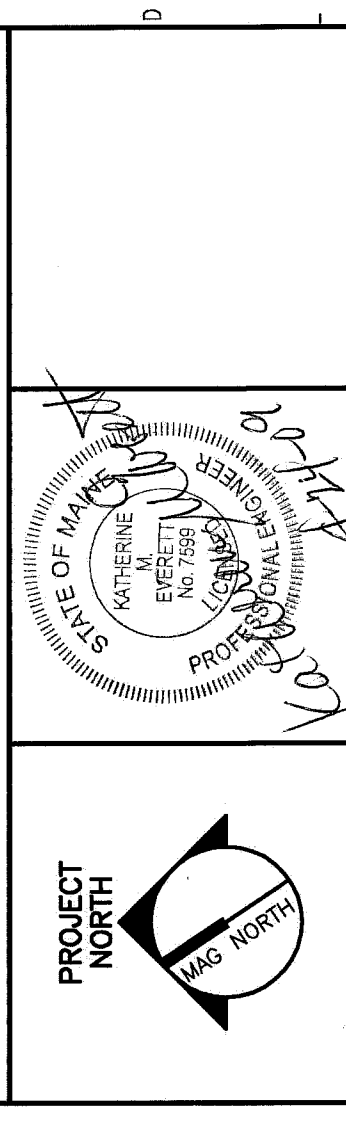
- NOTES:**
- SEE SHEET P101 FOR LEGEND AND ABBREVIATIONS.
  - REMOVE PLUMBING FIXTURES INDICATED TO BE REMOVED. UNLESS OTHERWISE NOTED, REMOVE EXISTING SANITARY AND VENT PIPING TO WITHIN 4" OF MANS AND CAP. PATCH WALL/FLOOR AS/IF NECESSARY TO MATCH EXISTING.
  - CONTRACTOR TO PATCH ROOF WHERE VTR'S ARE TO BE REMOVED TO MATCH EXISTING.
  - REFER TO DRAWING A-001 FOR DEFINITION OF ALTERNATIVES.

- KEYED NOTES:**
- PIPING LOCATED IN CEILING OF THE FLOOR BELOW.
  - REMOVE S DROP IN CEILING OF FLOOR BELOW TO A POINT 4" FROM EXISTING S PIPING AND PLUG.
  - REMOVE PLUMBING FIXTURE AND ASSOCIATED TRIM COMPLETE. PREPARE EXISTING CW, HW, V AND W PIPING IN WALL FOR CONNECTION OF NEW FIXTURE.
  - REMOVE VENT RISER ON THIS FLOOR TO A POINT WITHIN THE CEILING OF THE FLOOR BELOW. PREPARE EXISTING VENT CONNECTION.
  - TAKE CARE WHEN REMOVING PLUMBING EXTURE, SUPPORT AND ALL ASSOCIATED TRIM. SELECT UNIT IN BEST CONDITION TO BE RELOCATED. COORDINATE WITH OWNER. SEE P101 FOR NEW LOCATION.
  - RELOCATE EXISTING STORM DRAIN PIPING TO AVOID NEW STRUCTURE.



REV.	ISSUED FOR CONSTRUCTION	DATE
0		4-24-09

**ISSUED FOR CONSTRUCTION**  
4-24-09



**SMRTI**  
ARCHITECTURE  
ENGINEERING  
PLANNING  
INTERIOR DESIGN  
COMPOSING

144 Fore Street, D. Box 618  
Portland, Maine 04104  
Tel: (207) 752-3846  
Fax: (207) 752-3850  
www.smrti.com

THIRD FLOOR DWG  
PIPING DEMOLITION PLAN

SCALE:	1/8" = 1'-0"	DATE:	4-24-09
PROJECT MANAGER:	CP	GRAPHIC SCALE:	0' 1'
DWG. CAPTION:	BAL		
DATE OF RECORD:	NME	SHEET No.	
SHEET CAD FILE:	P101-08093		
PROJECT No.:	08093-00		

**A1 THIRD FLOOR FACILITY DEMOLITION PLAN**

1/8"=1'-0"