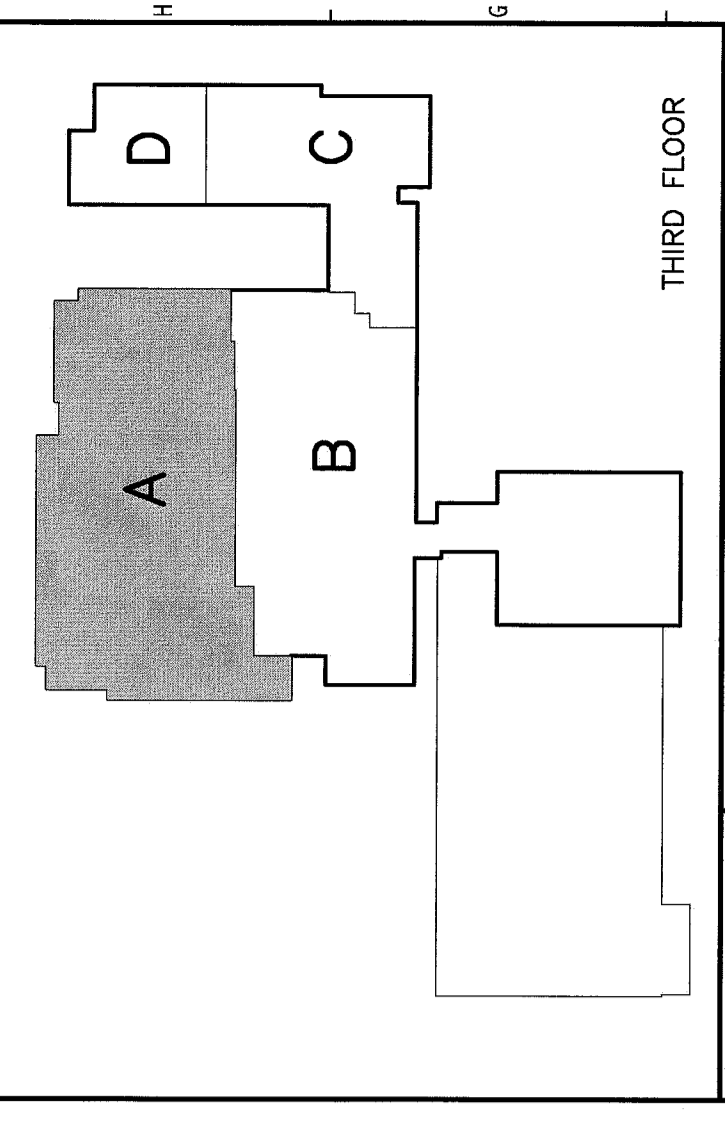
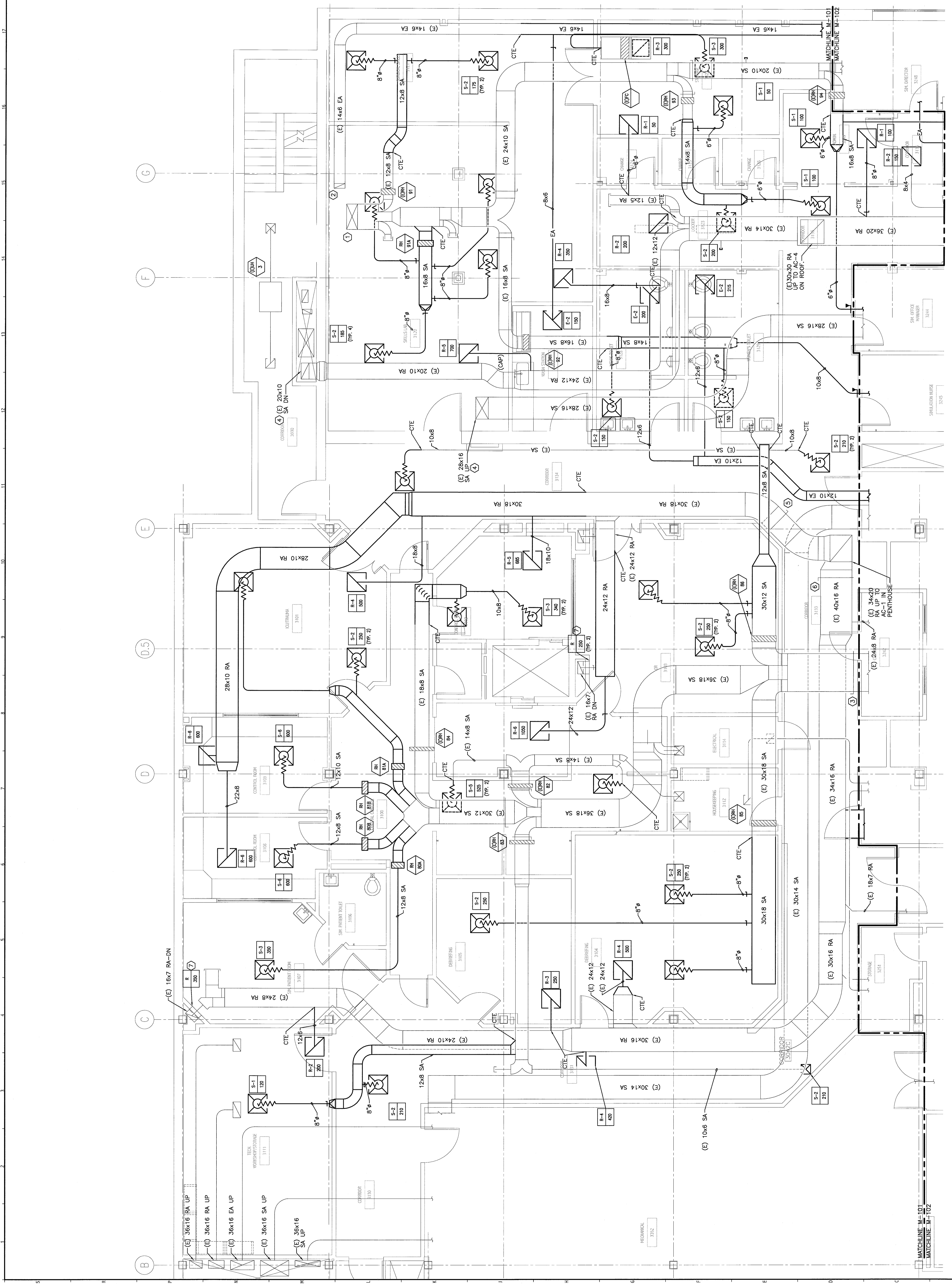


- NOTE:**
- SEE SHEET M-001 FOR LEGEND AND ABBREVIATIONS.
 - REFER TO DRAWING A-001 FOR DEFINITION OF ALTERNATES.

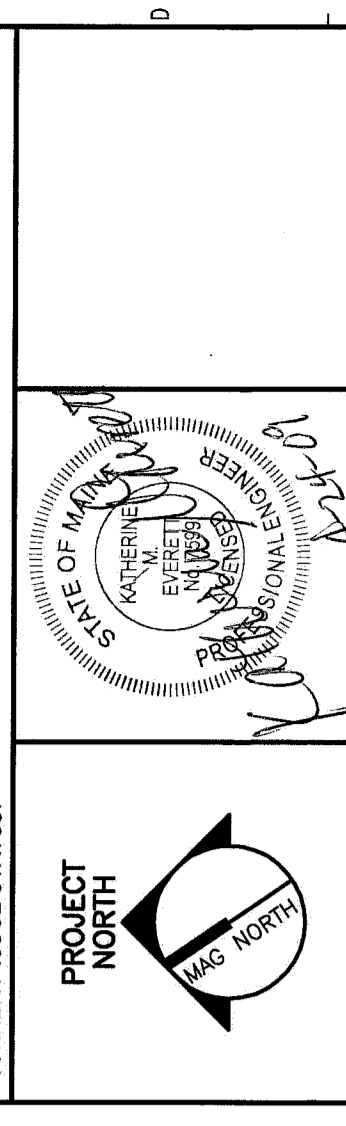
- KEYED NOTES:**
- (E)32x14 SA UP TO (E)MCL-4 ON ROOF.
 - 14x8 EA UP TO (E)E-6 ON ROOF.
 - BALANCE BRANCH DUCT TO 6175 CFM SA.
 - RETURN TO PRE-CONSTRUCTION ON AIRFLOW BALANCE.
 - BALANCE TO 3935 CFM.
 - BALANCE TO 3810 CFM.
 - PROVIDE IN-KIND REPLACEMENT OF EXISTING LOW RETURN GRILLE. VERIFY SIZE IN FIELD PRIOR TO PURCHASE.



F18 KEY PLAN

REV.	DESCRIPTION	DATE
0	ISSUED FOR CONSTRUCTION	4-24-09

ISSUED FOR CONSTRUCTION
4-24-09



PROJECT NORTH
CURRENT ISSUE STATUS:
ARCHITECTURE
ENGINEERING
PLANNING
INTERIOR DESIGN
COMMISSIONING

144 Pine Street, 9th Fl., Box 618
Portland, Maine 04104
Tel: (207) 772-3946
Fax: (207) 772-1070
www.smarti.com

SMARTI
MAINE MEDICAL CENTER
OFFICE OF MEDICAL EDUCATION
PORTLAND, MAINE

THIRD FLOOR - AREA A
HVAC DUCTWORK PLAN

SHEET TITLE	1/4"=1'-0"	DATE	4-24-09
PROJECT MANAGER	CP	GRAPHIC SCALE	0'
JOB CAPTAIN	BA		
DATE OF RECORD	KME	SHEET No.	M-101
SMARTI CAD FILE	M-101-00003		
PROJECT No.	08093-00		

A1 THIRD FLOOR FACILITY PLAN

1/4"=1'-0"