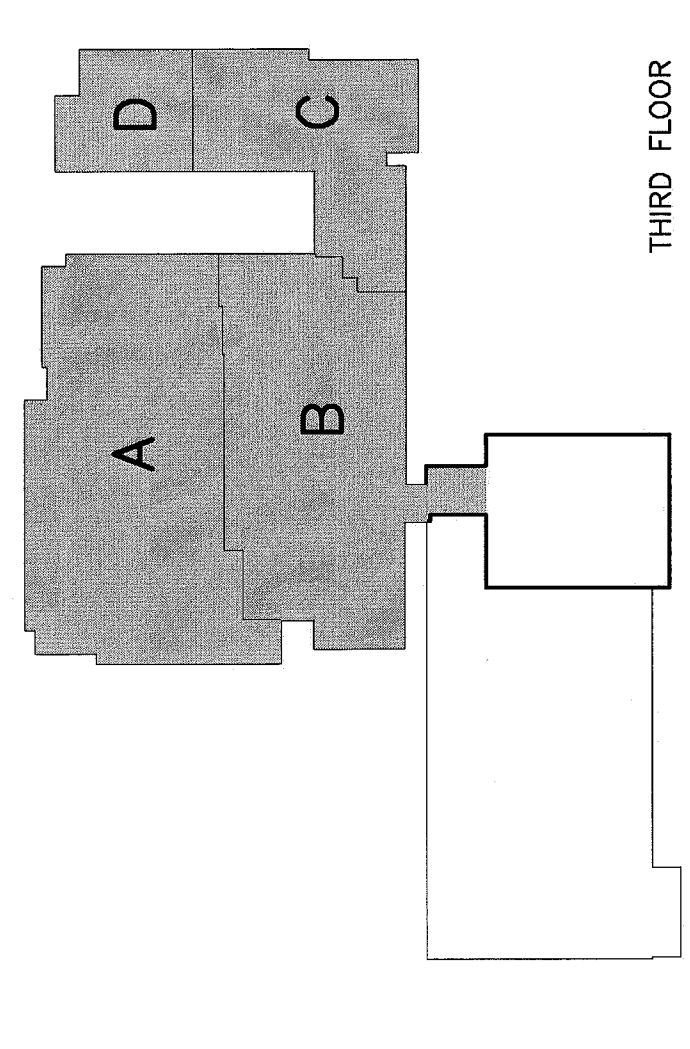
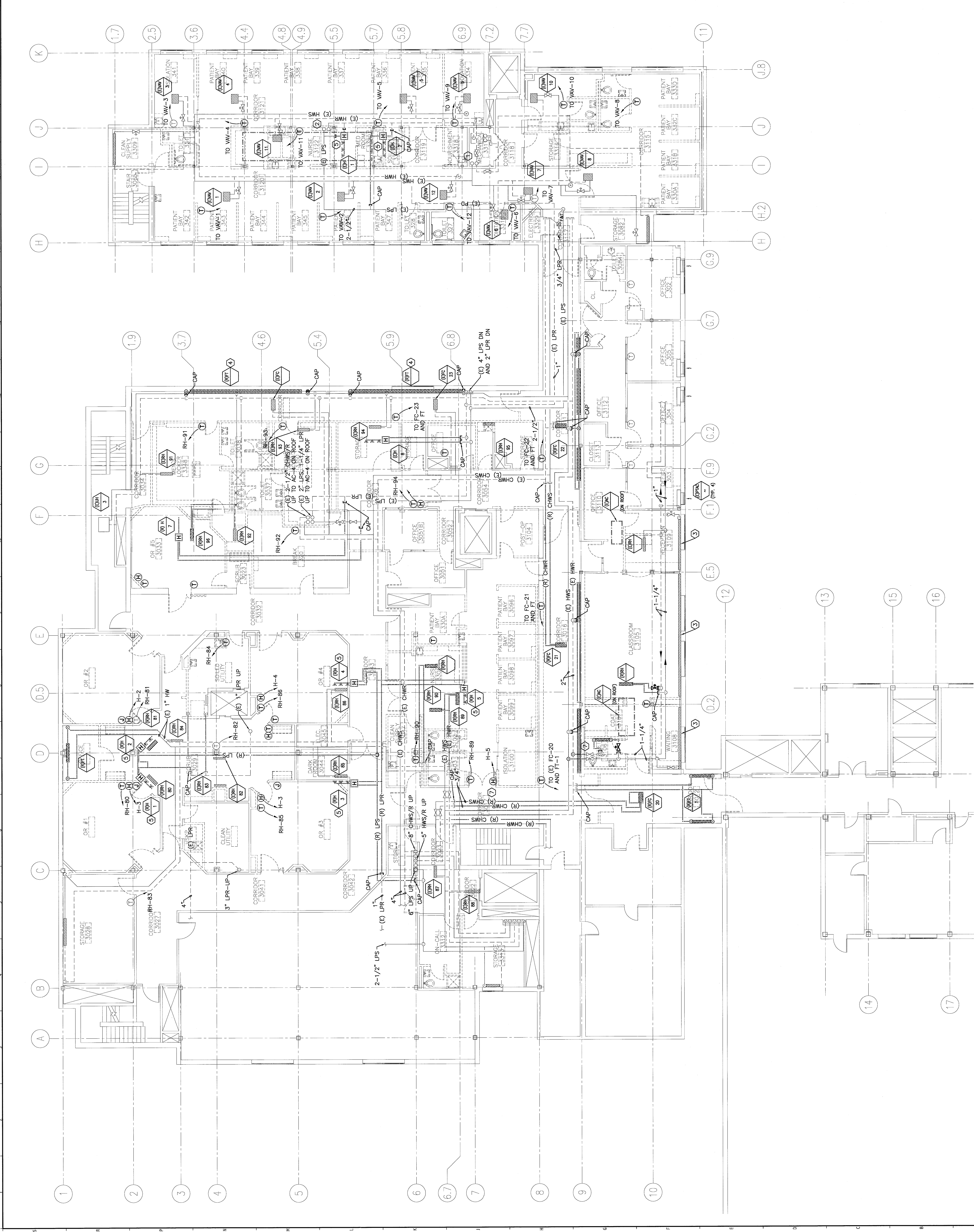


- NOTE:**
- SEE SHEET M-001 FOR LEGEND AND ABBREVIATIONS.
 - REFER TO DRAWING A-001 FOR DEFINITION OF ALTERNATES.

KEYED NOTES:

- EXISTING 2" HWS/R DN.
- EXISTING 2-1/2" LPS, 1-1/4" LPR UP TO RTU-1 ON ROOF.
- EXISTING FUTURE RADIATION TO REMAIN. REPLACE ENCLOSURE FRONTS AS INDICATED ON NEW CONDITIONS PLAN.
- REMOVE EXISTING FUTURE RADIATION AS INDICATED. INSTALL NEW RADIATION AS INDICATED ON NEW CONDITIONS PLAN.
- REMOVE EXISTING DUCT WTD HUMIDIFIER AND ASSOCIATED CONTROLS AS INDICATED. REMOVE ASSOCIATED STEAM AND CONDENSATE PIPING BACK TO NEAREST MAIN AND CAP.
- REMOVE EXISTING STEAM AND CONDENSATE PIPING FEEDING STERILIZER BACK TO NEAREST MAIN AND CAP.
- REMOVE EXISTING CHW/HW PIPING AS REQUIRED TO ALLOW FOR THE INSTALLATION ON NEW STRUCTURAL STEEL. REPAIR PIPING AS INDICATED ON THE NEW CONDITIONS PLAN.



F18 KEY PLAN

REV.	ISSUED FOR CONSTRUCTION	DESCRIPTION	DATE
0			4-24-09

ISSUED FOR CONSTRUCTION
4-24-09

PROJECT INFORMATION

144 Free Street, Box 618
Portland, Maine 04104
Tel: (207) 772-2886
Fax: (207) 772-2888
www.smrtinc.com

ARCHITECTURE
ENGINEERING
PLANNING
INTERIOR DESIGN
COMMISSIONING

SMRT

MAINE MEDICAL CENTER
OFFICE OF MEDICAL EDUCATION
PORTLAND, MAINE

THIRD FLOOR HVAC
PIPING DEMOLITION PLAN

SCALE:	1/8"=1'-0"	DATE:	4-24-09
PROJECT MANAGER:	COP	GRAPHIC SCALE:	0' 1'
DESIGNER:	BAJ/OL		
DATE OF RECORD:	RME	SHEET No.	MD102
SHEET CAD FILE:	MD102-08093		
PROJECT No.:	08093-00		

A1 THIRD FLOOR FACILITY PLAN

1/8"=1'-0"